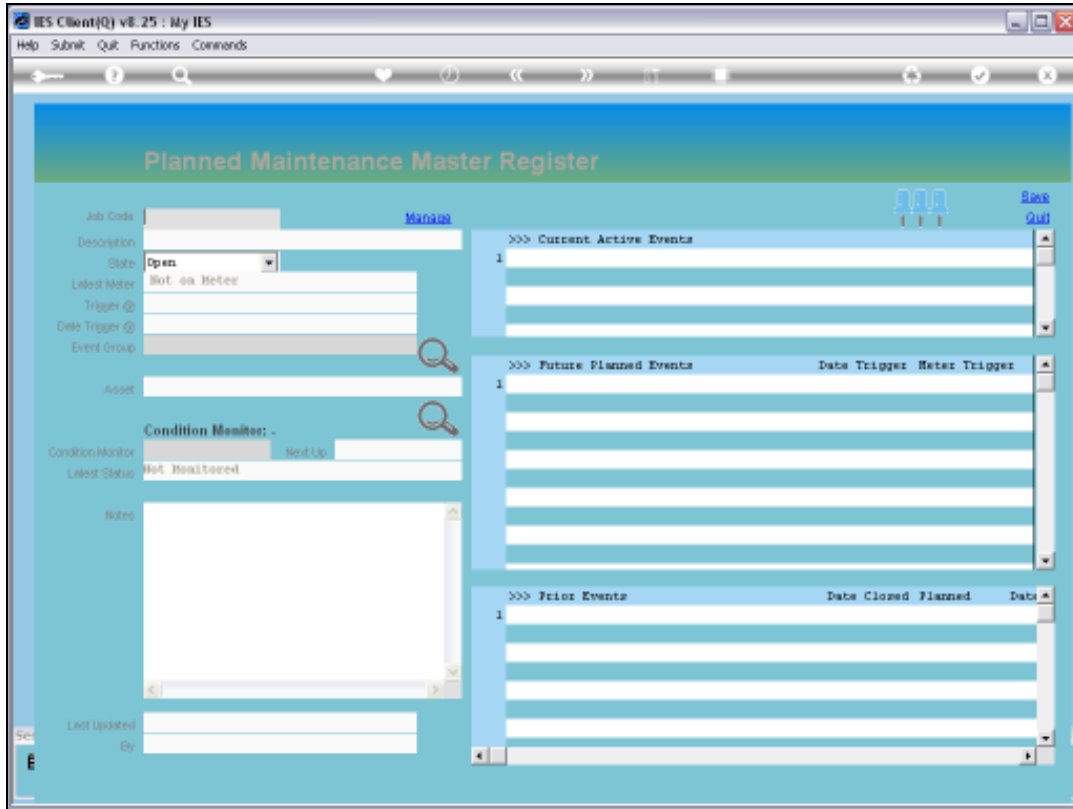
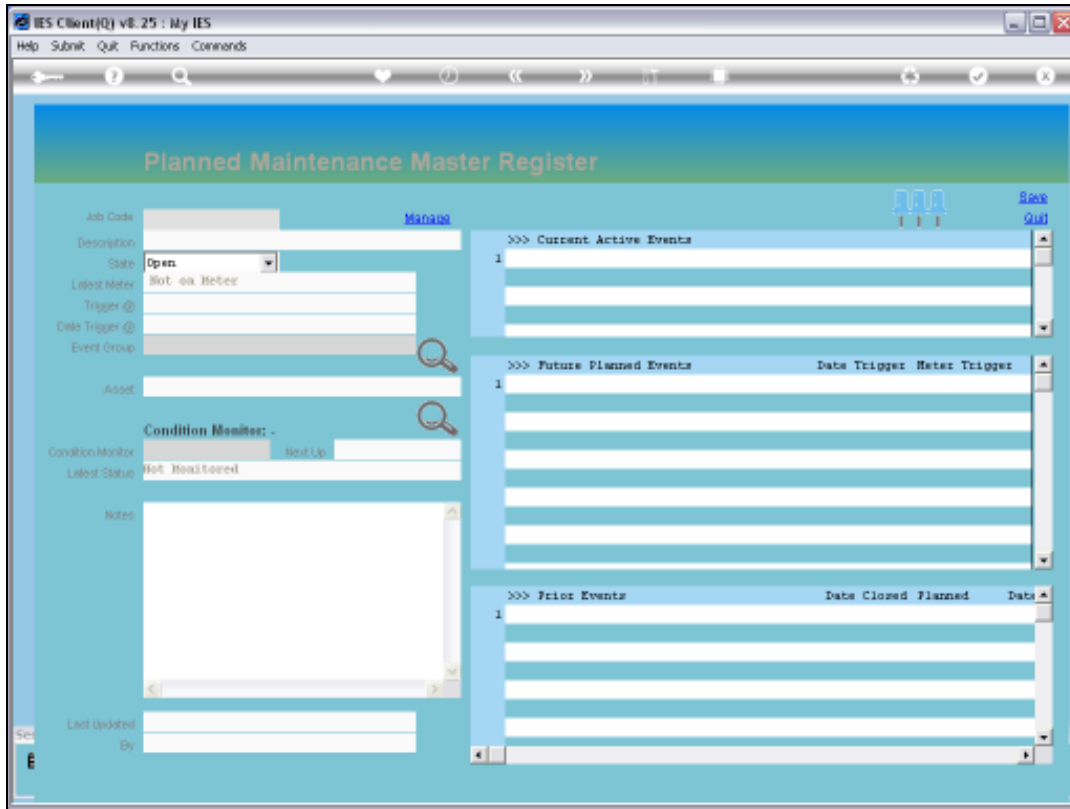


Slide 1

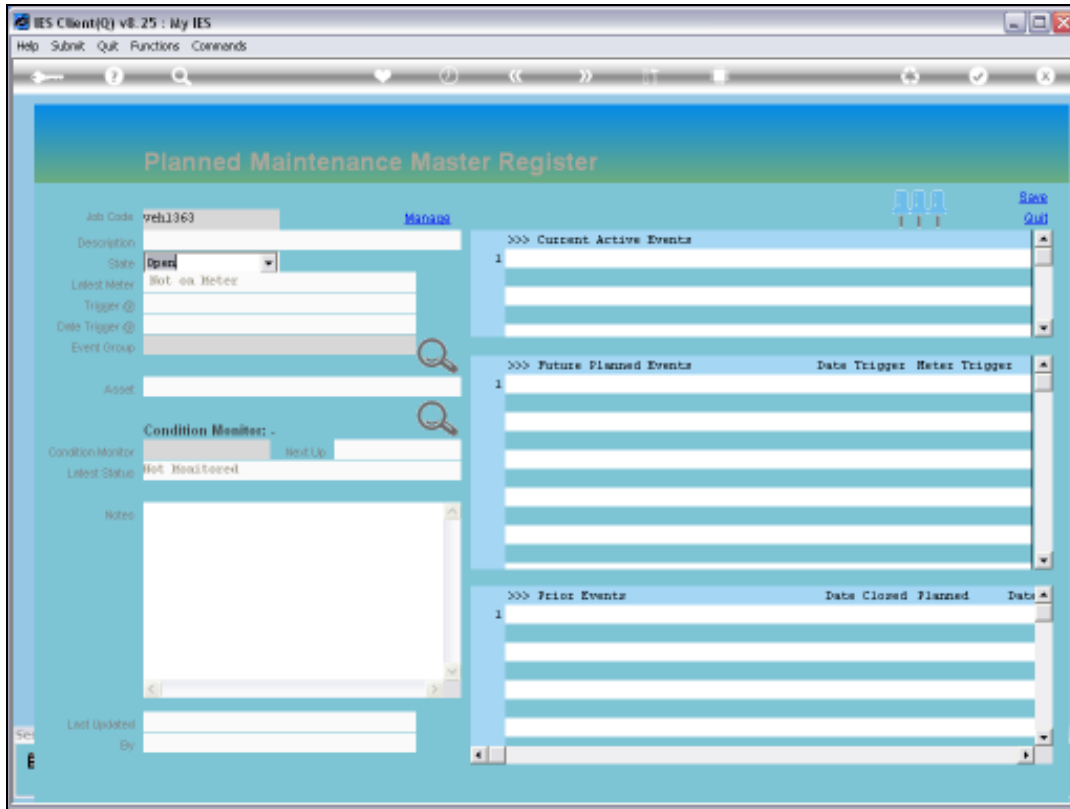
Slide notes: Any Prior Event can be queried from the Maintenance Master that it belongs to, or from the Works Order number. In this example, we look at it from the Maintenance Master.



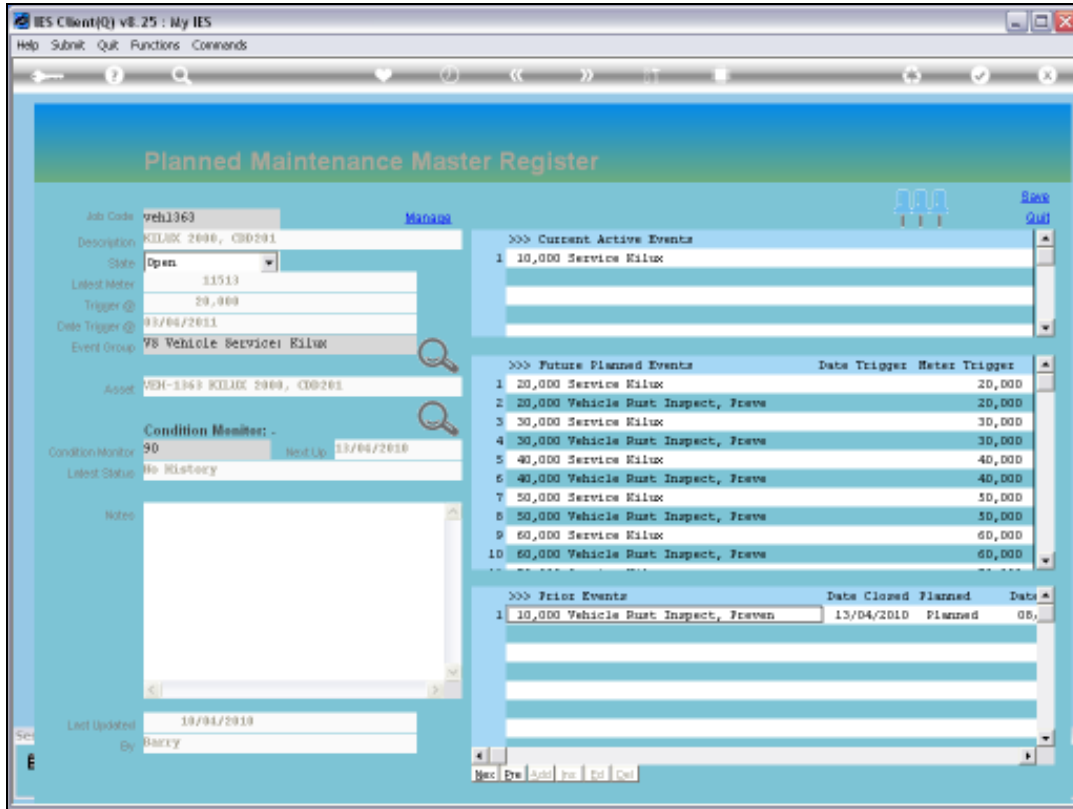
Slide 2
Slide notes:



Slide 3
Slide notes:

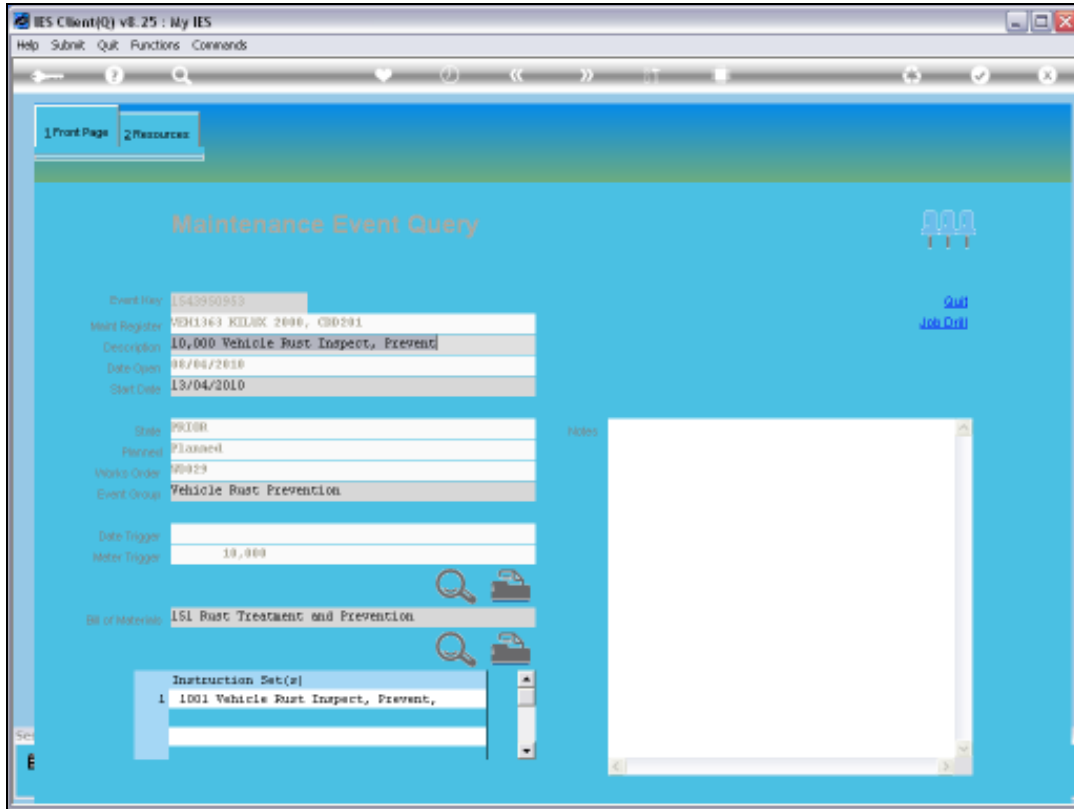


Slide 4
Slide notes:



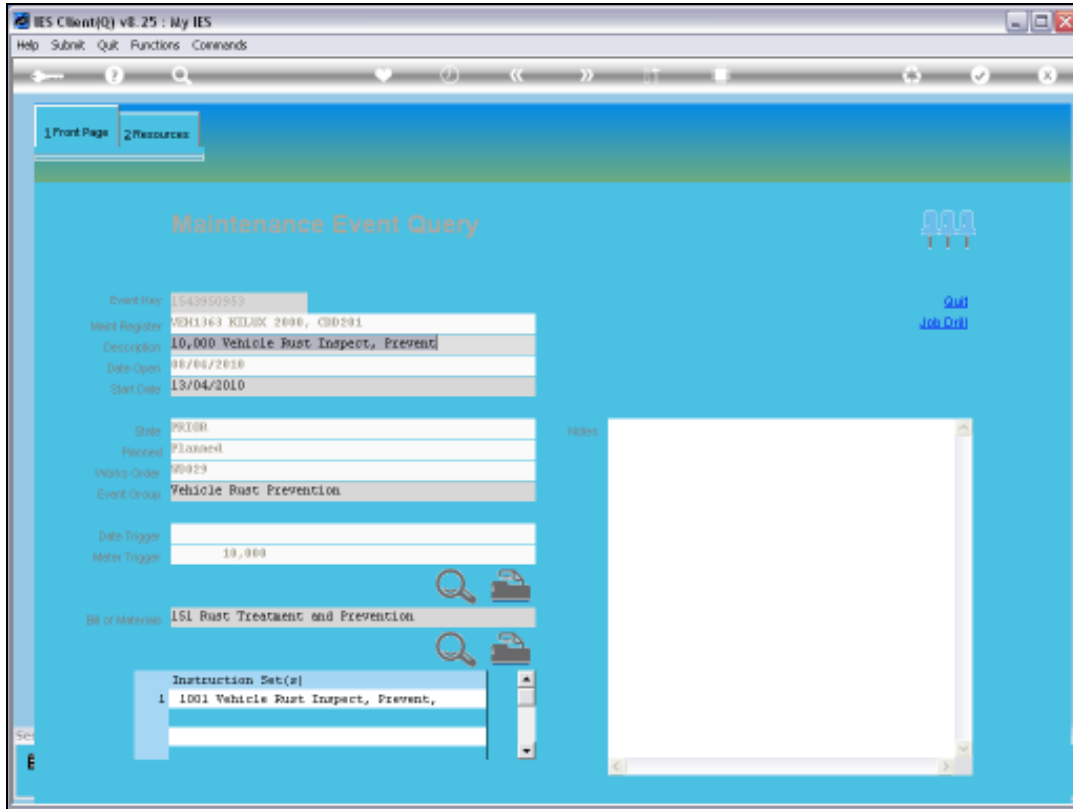
Slide 5

Slide notes: The Prior Event is queried by dbl-clicking on it.

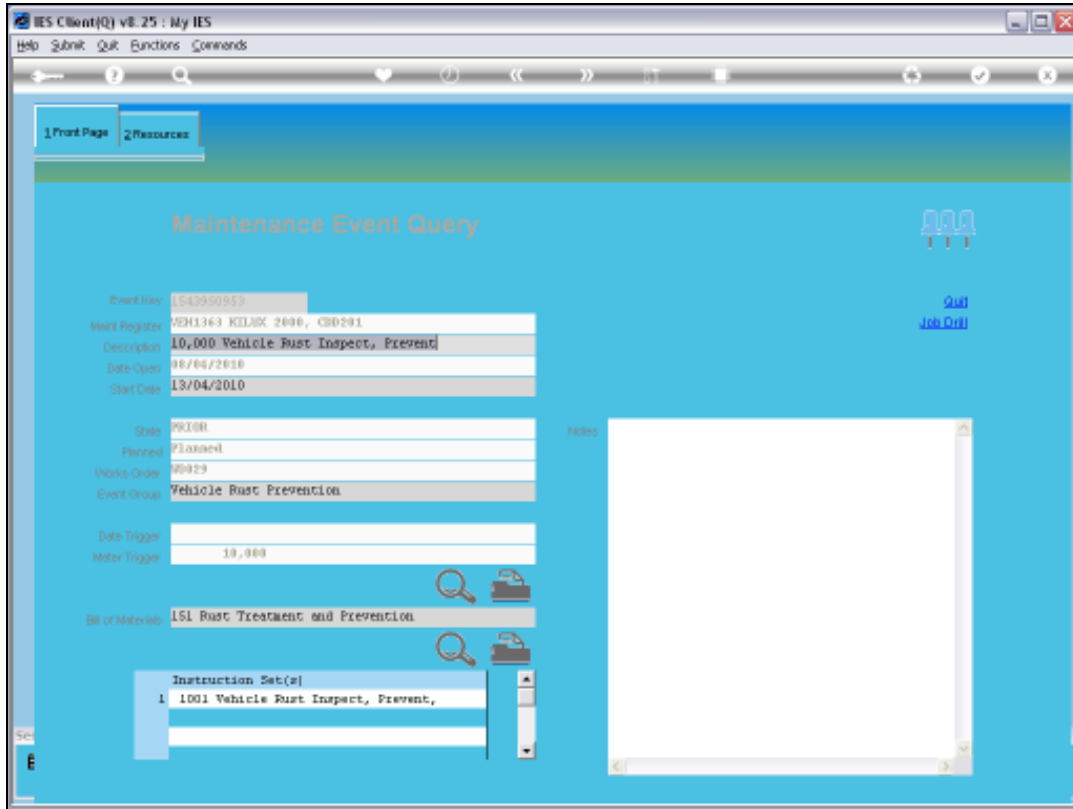


Slide 6

Slide notes: And this results in the Prior Event being opened, with its historic detail.



Slide 7
Slide notes:



Slide 8
Slide notes: