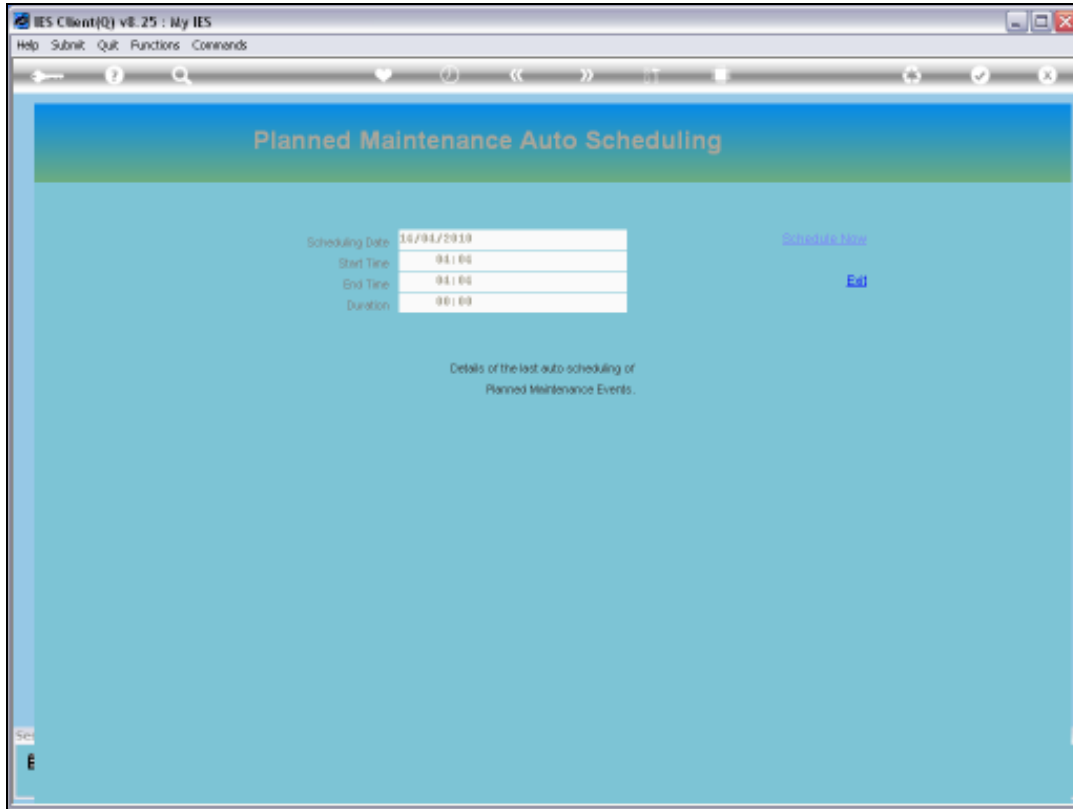
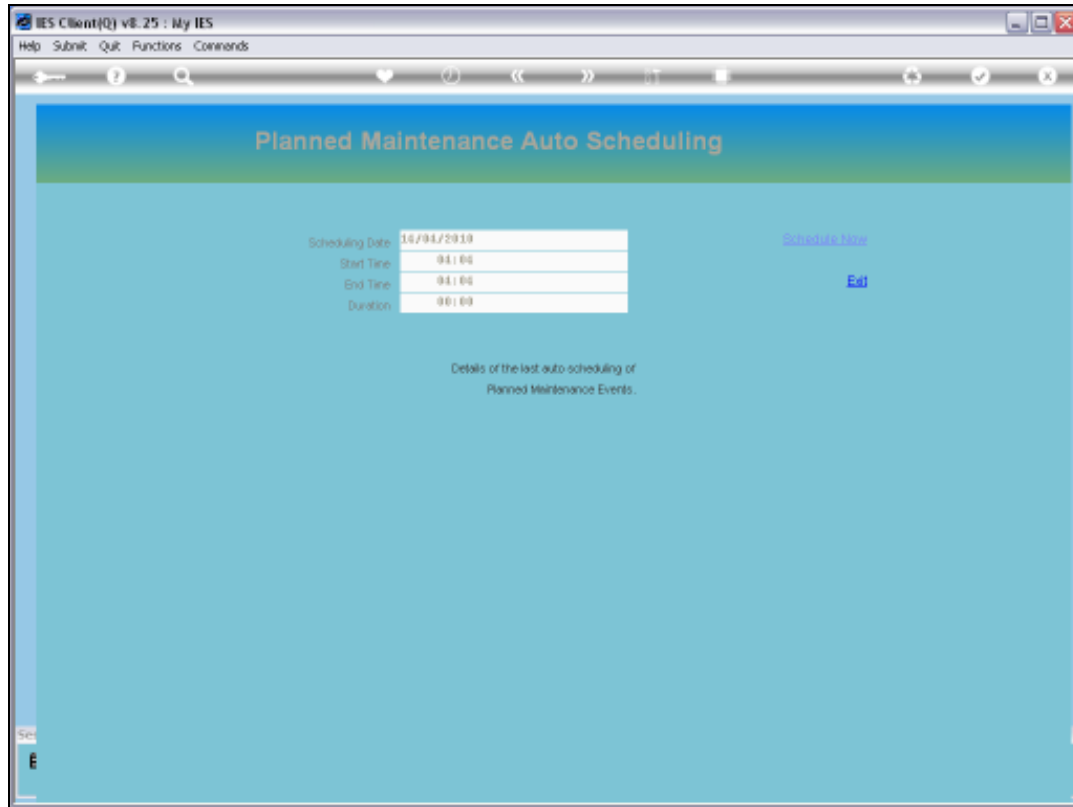


Slide 1

Slide notes: The Event Scheduler is that system mechanism that will automatically trigger Maintenance Events when a certain Meter Reading or Date is reached, and then turn such Events into Current Active Events that automatically show up on the Active Dashboard..

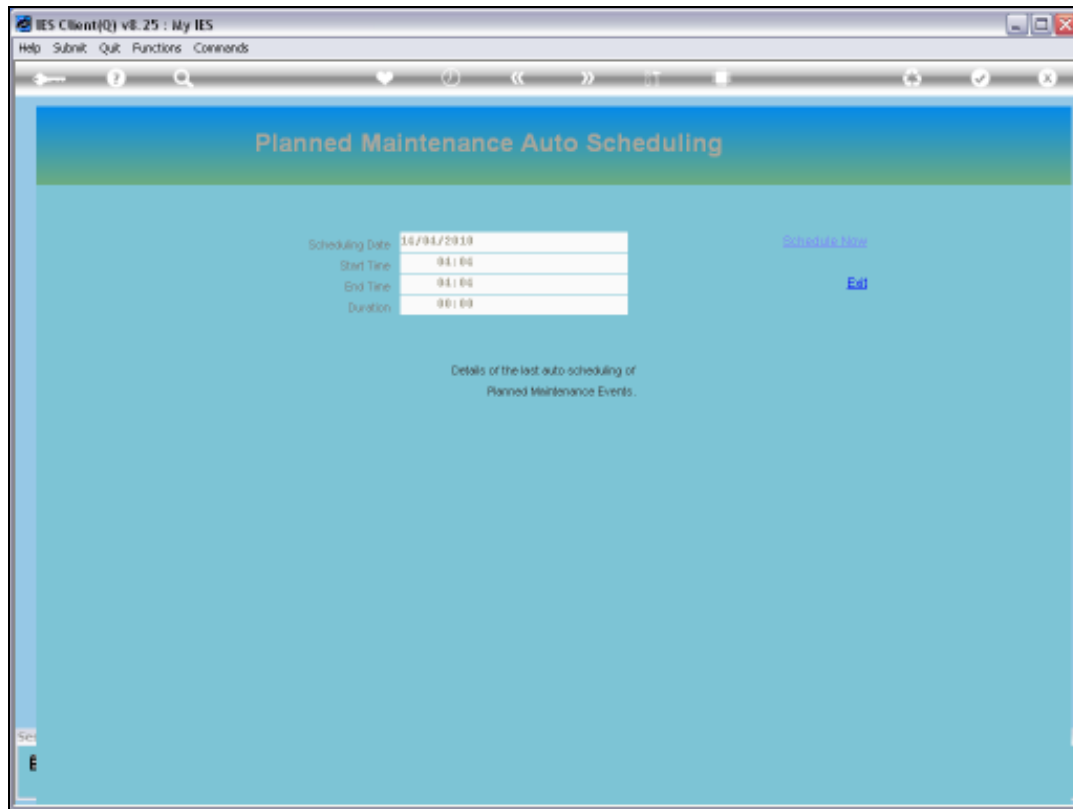


Slide 2
Slide notes:



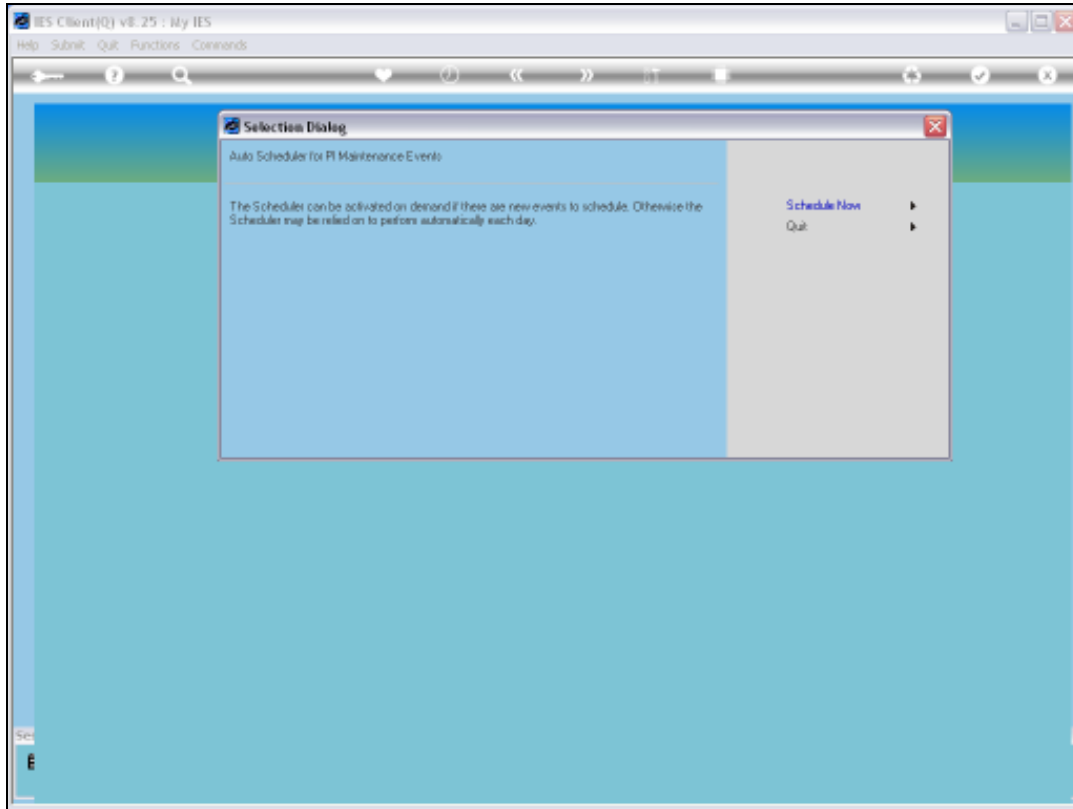
Slide 3

Slide notes: We do not have to open the Scheduler. It performs by itself. However, if we insist on checking it, we should find a display of the last time the Scheduler woke up, when it started and finished, and for how long it was actively inspecting possible Maintenance Events for triggering.

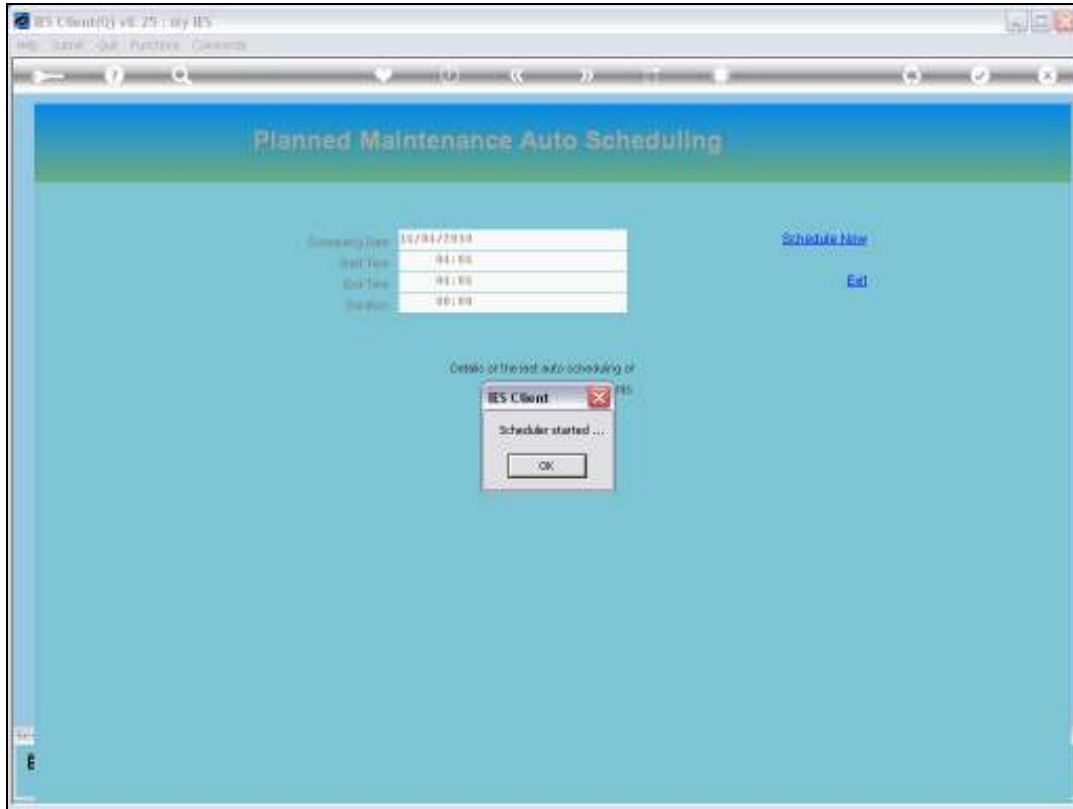


Slide 4

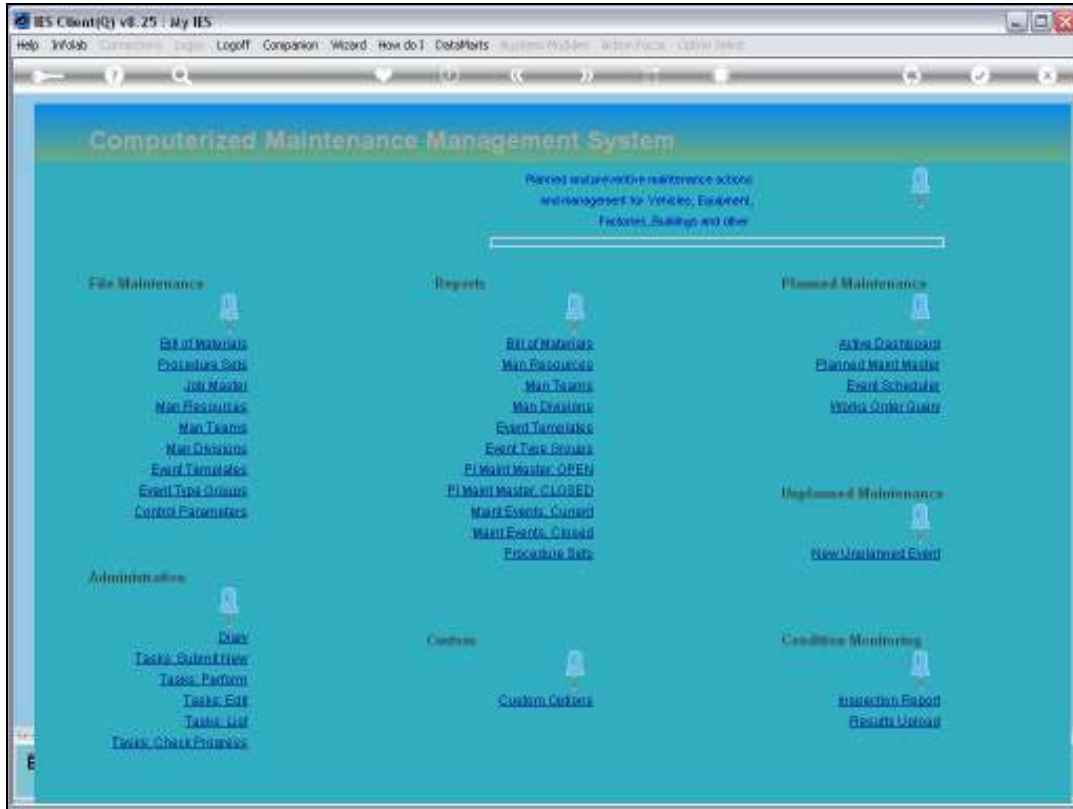
Slide notes: We can also start the Scheduler on demand and in reality that would only affect Maintenance Events where the Target Date or latest Meter Reading was updated since the time when the Scheduler ran earlier today. The Scheduler wakes up once a day by itself, and then again on the next day.



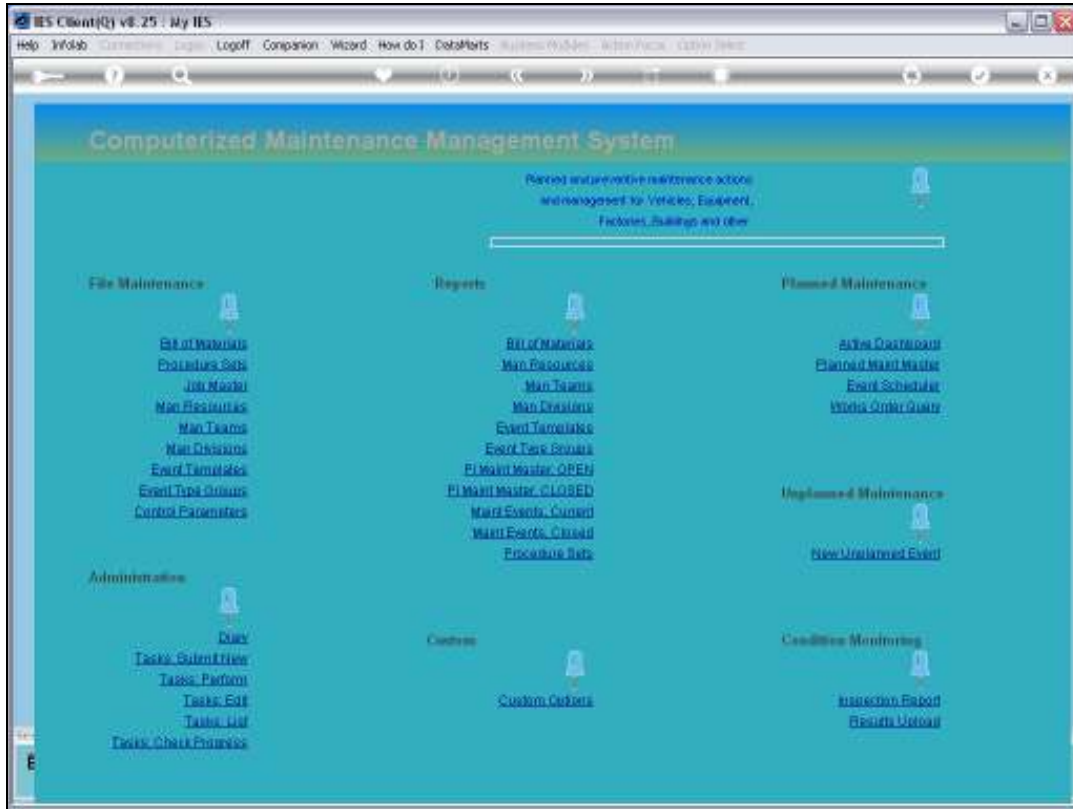
Slide 5
Slide notes:



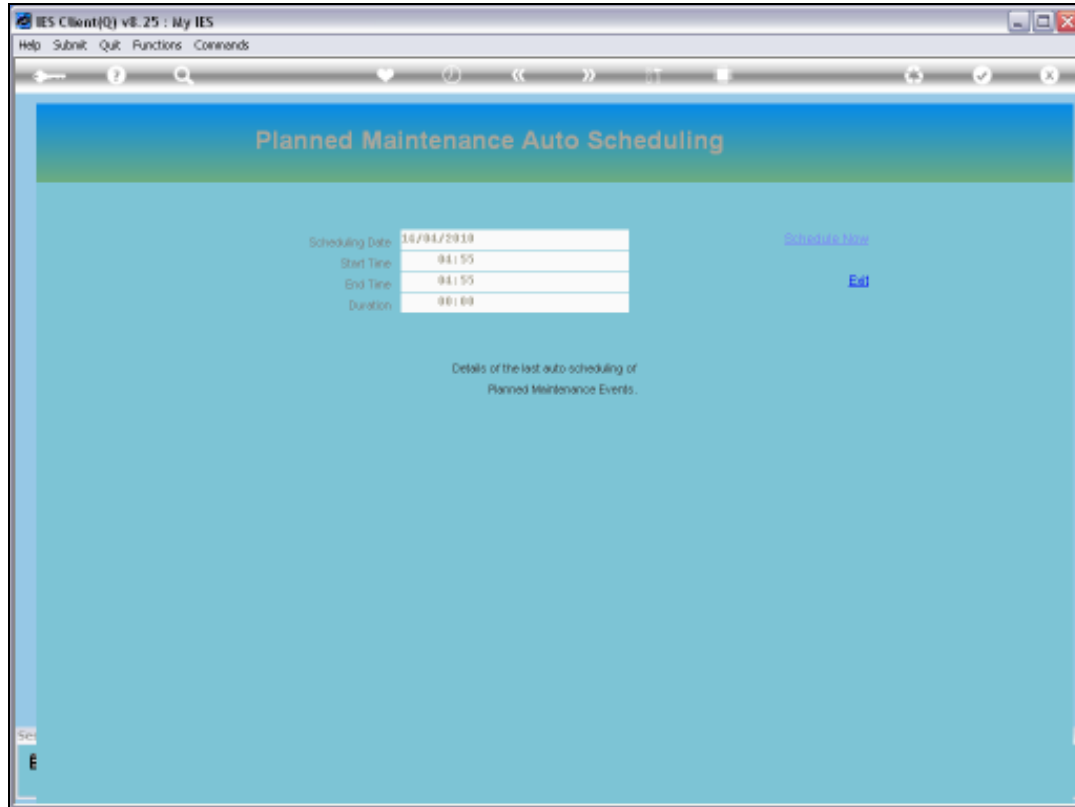
Slide 6
Slide notes:



Slide 7
Slide notes:

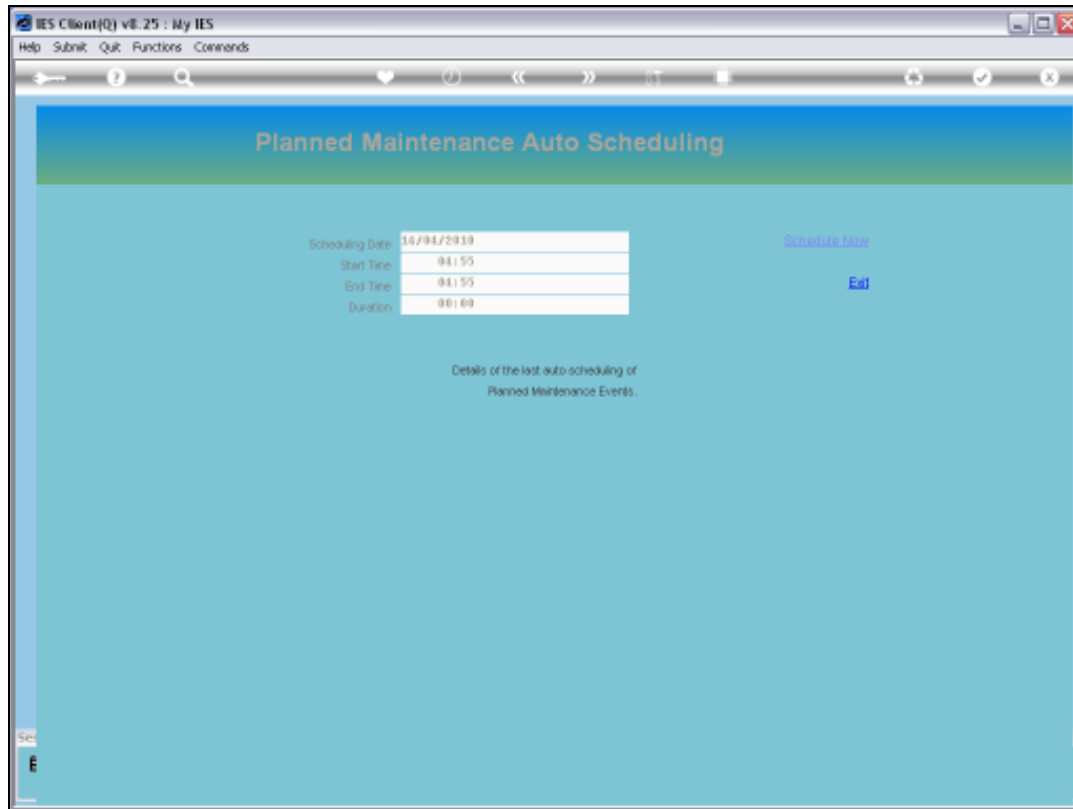


Slide 8
Slide notes:



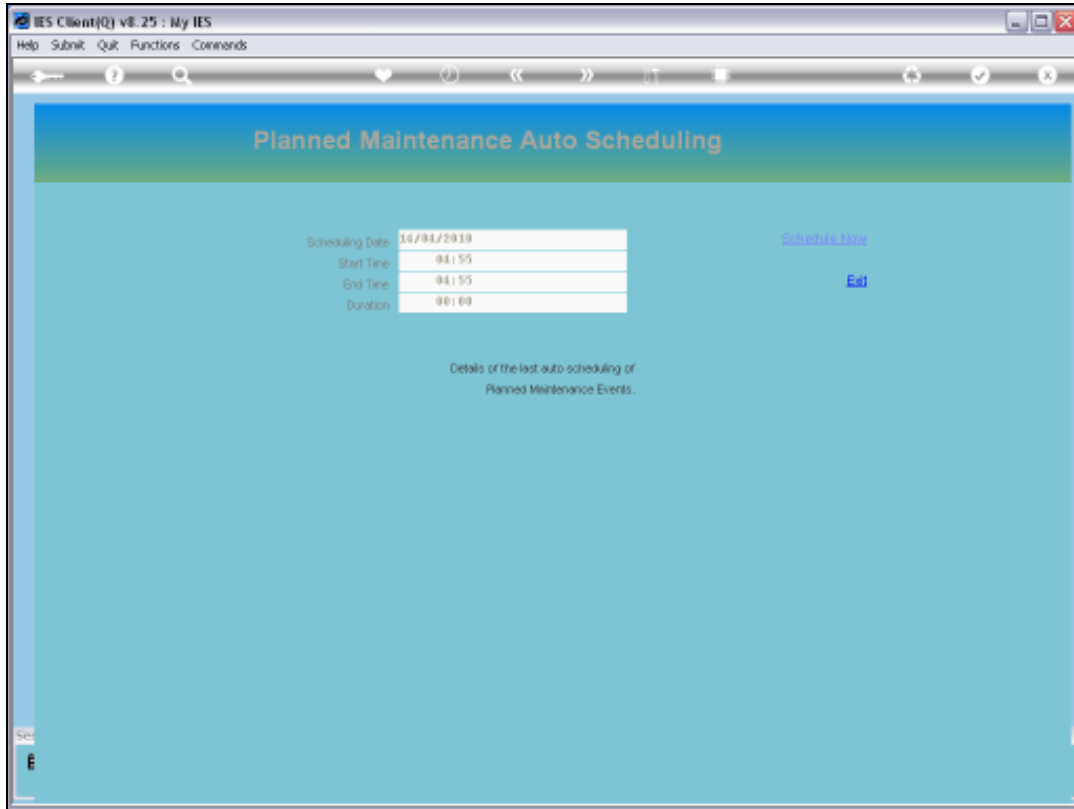
Slide 9

Slide notes: And now we can see that the Scheduler time indicators have changed, due to being manually started in addition to its earlier wake up.



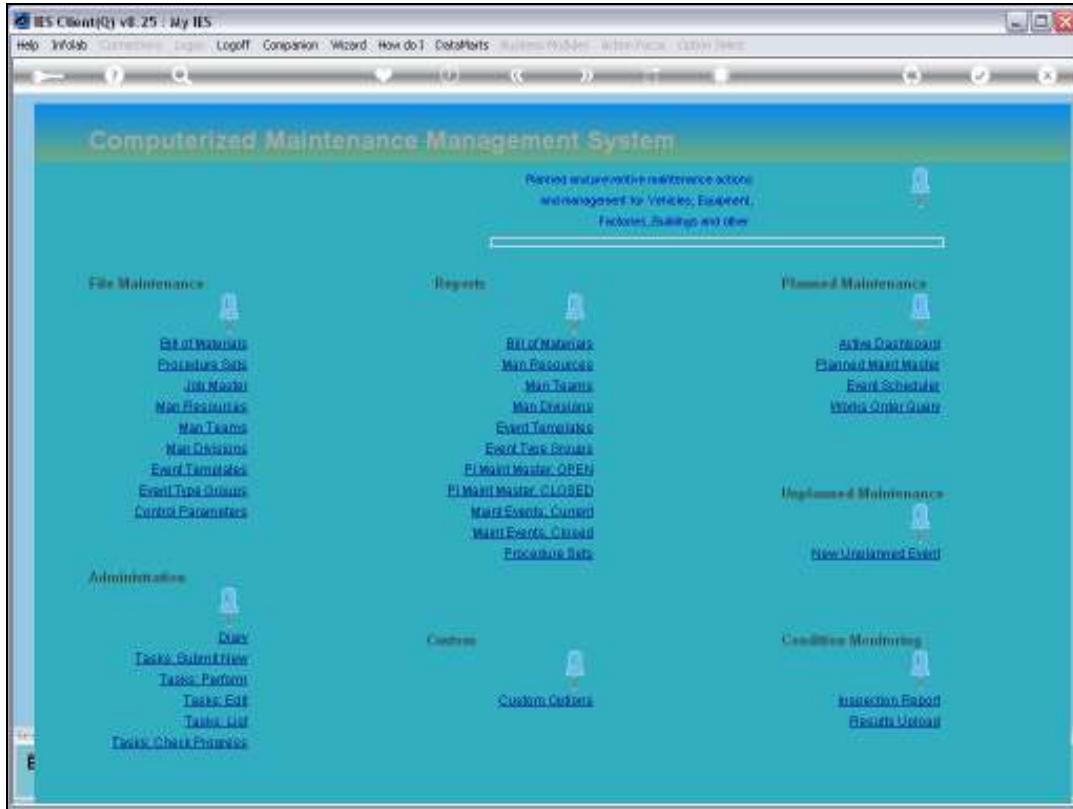
Slide 10

Slide notes: Frankly, there is just no need to manually start the Scheduler. It will always run on any day before you can inspect your Active Dashboard.

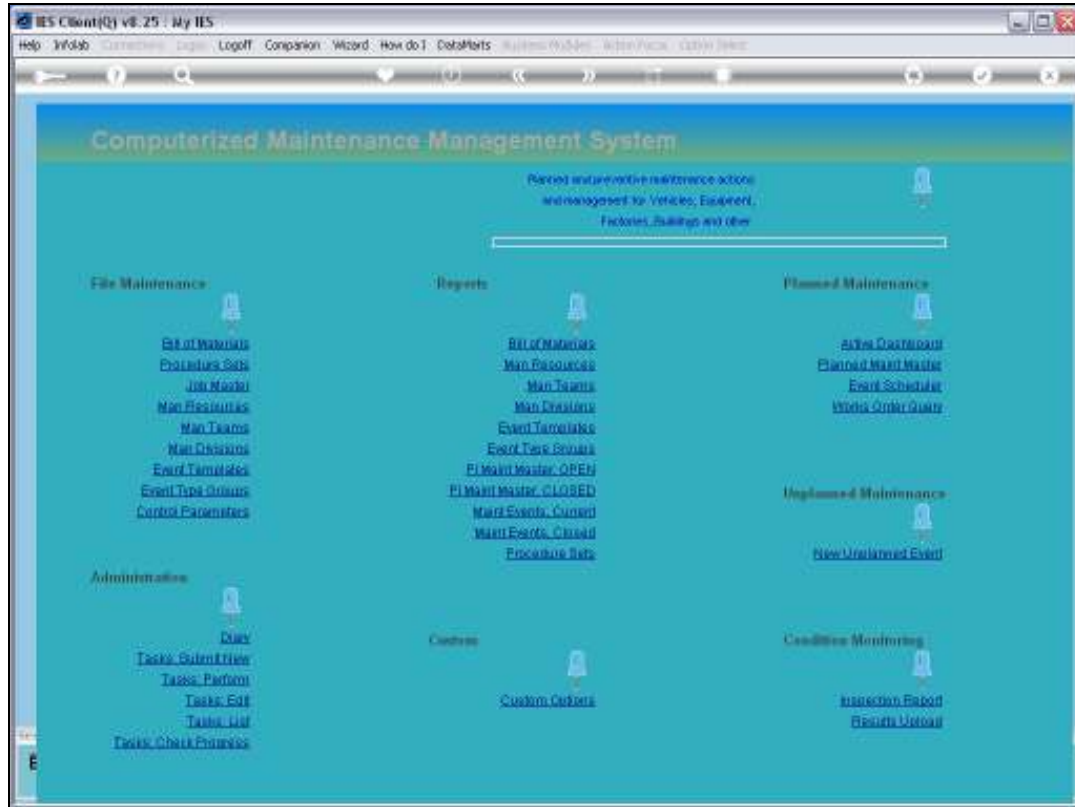


Slide 11

Slide notes:



Slide 12
Slide notes:



Slide 13
Slide notes: