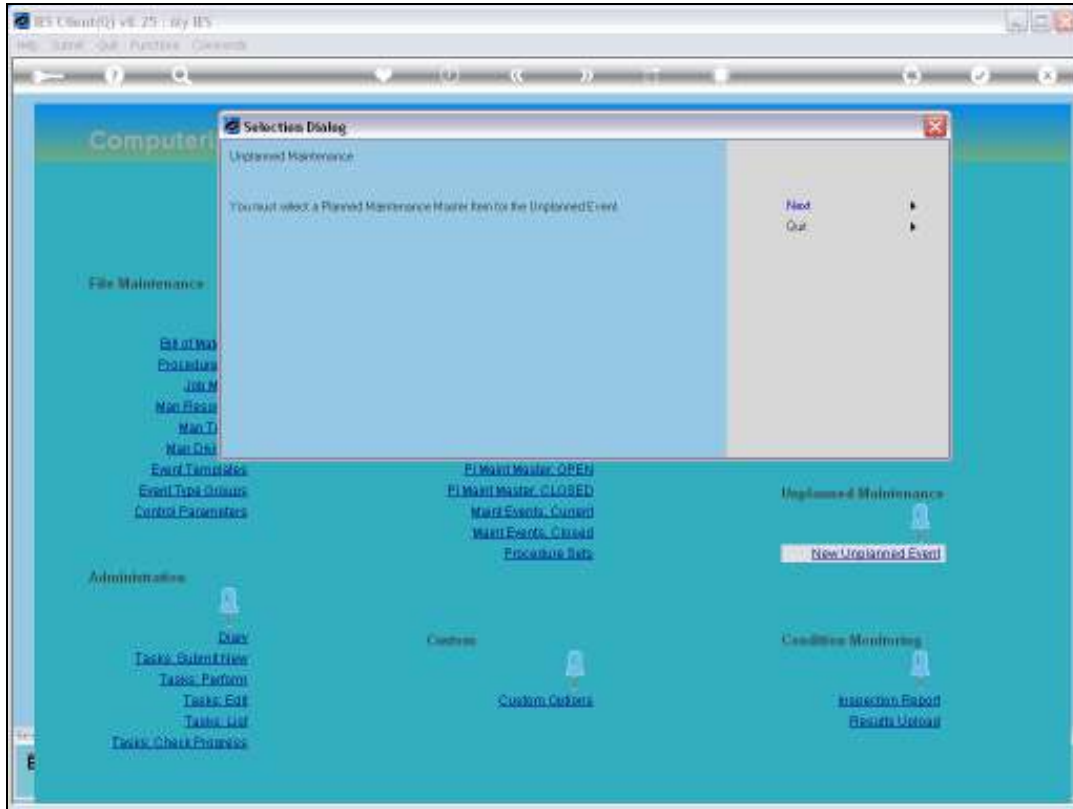
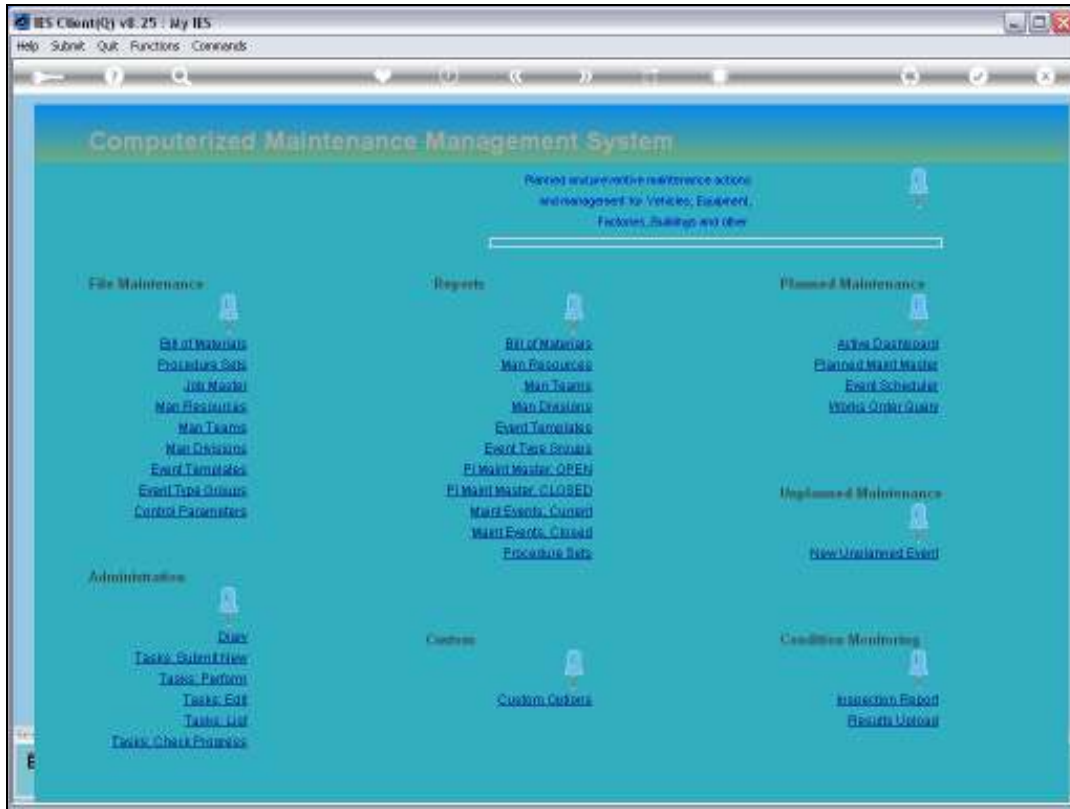


Slide 1

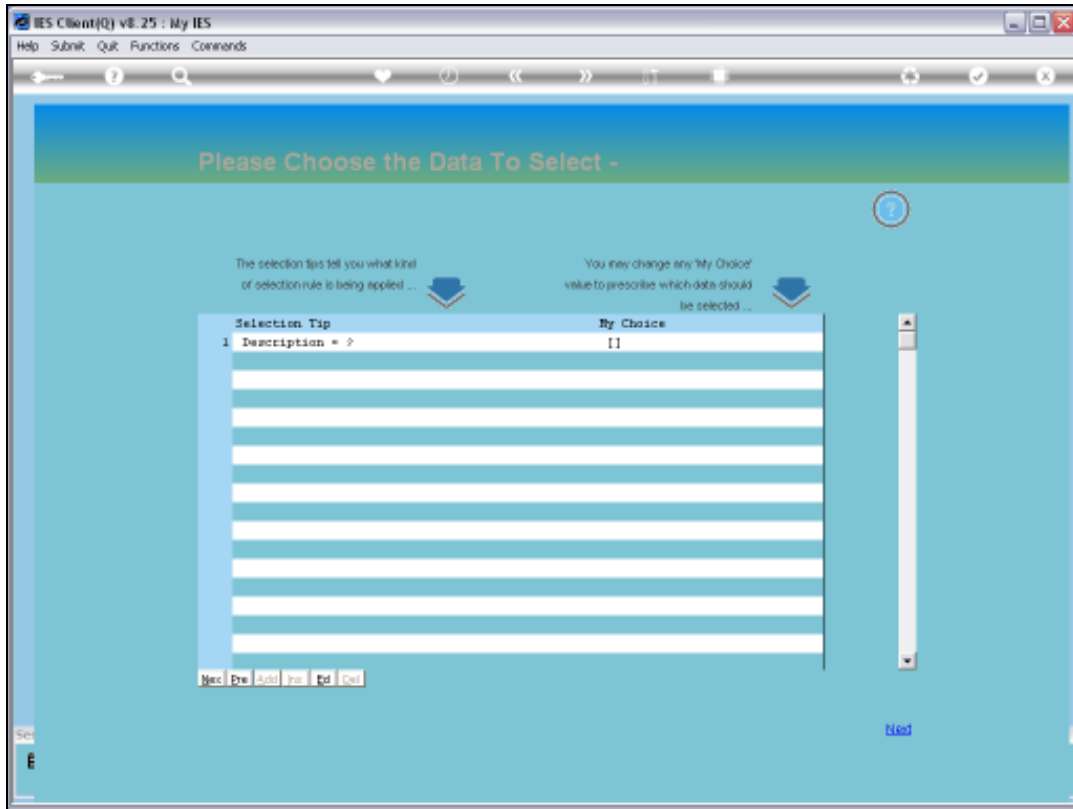
Slide notes: While most Maintenance Events may be planned in an orderly fashion, there are always the unforeseen and unplanned Events as well. We will now see how we can easily include Unplanned Maintenance Events.



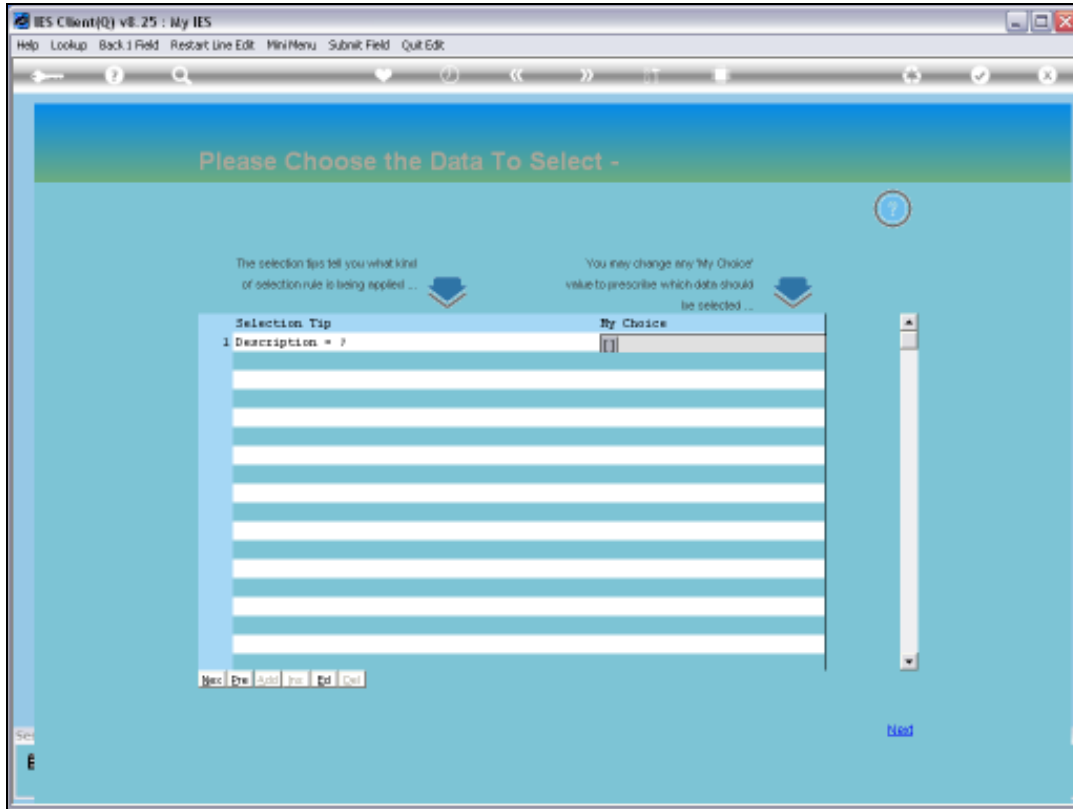
Slide 2
Slide notes:



Slide 3
Slide notes:

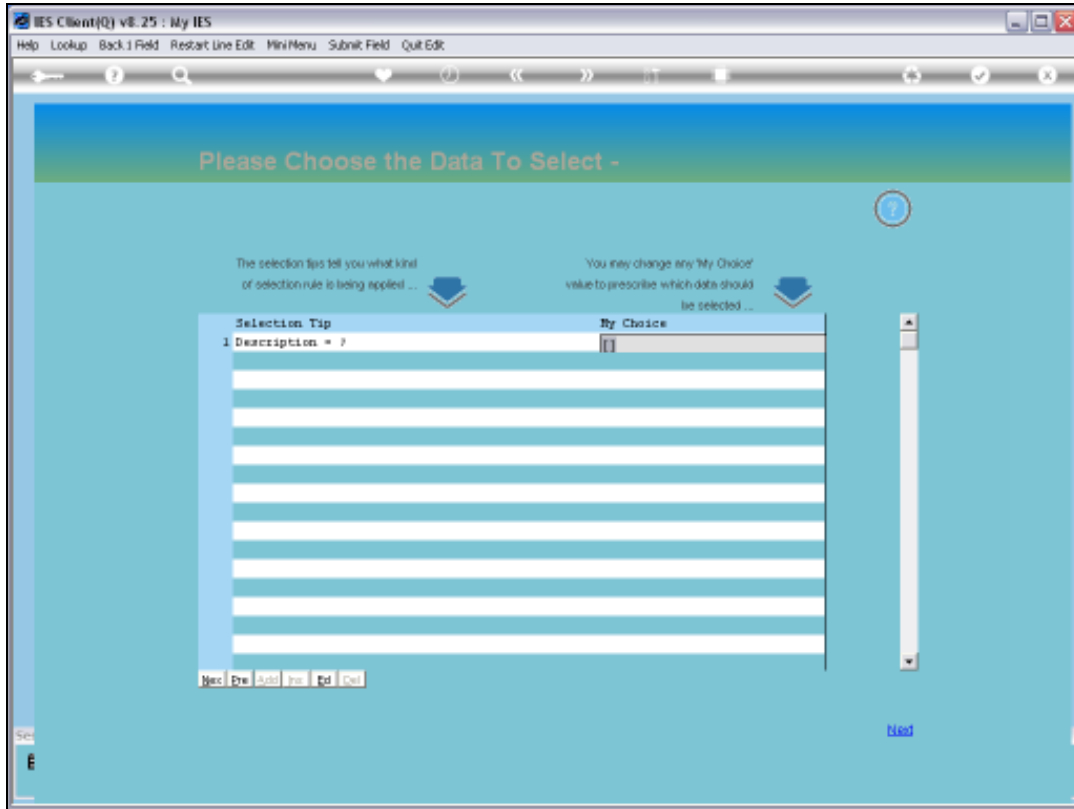


Slide 4
Slide notes:

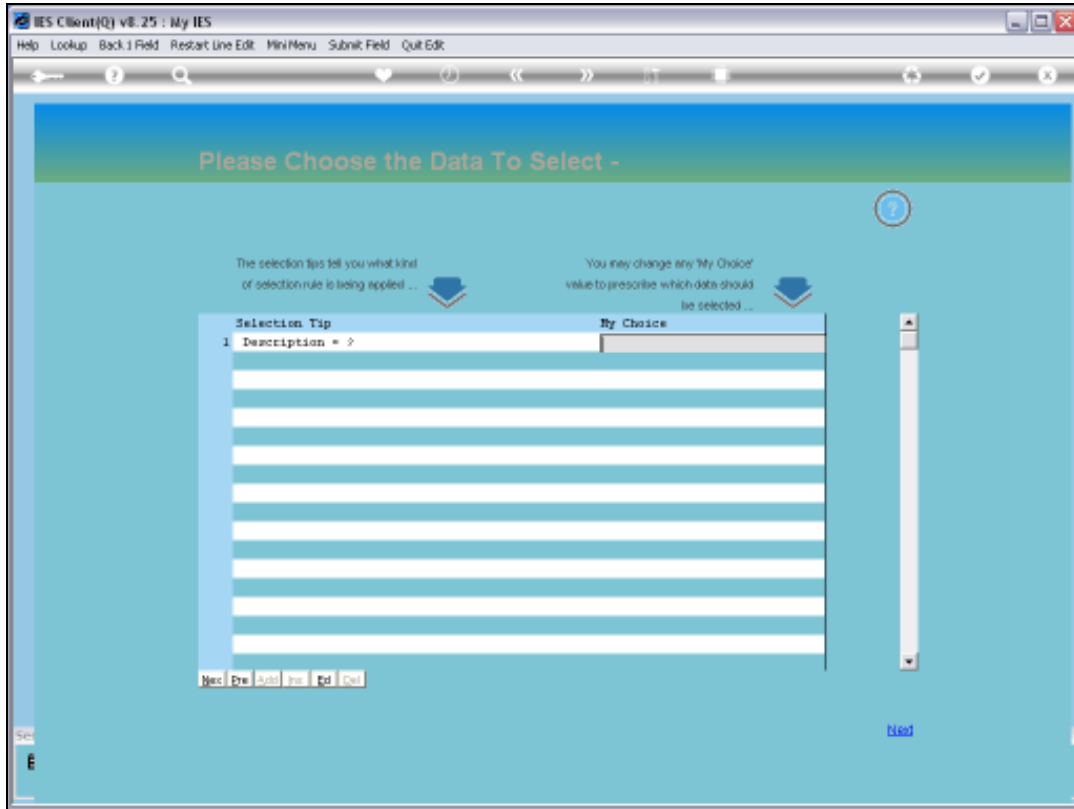


Slide 5

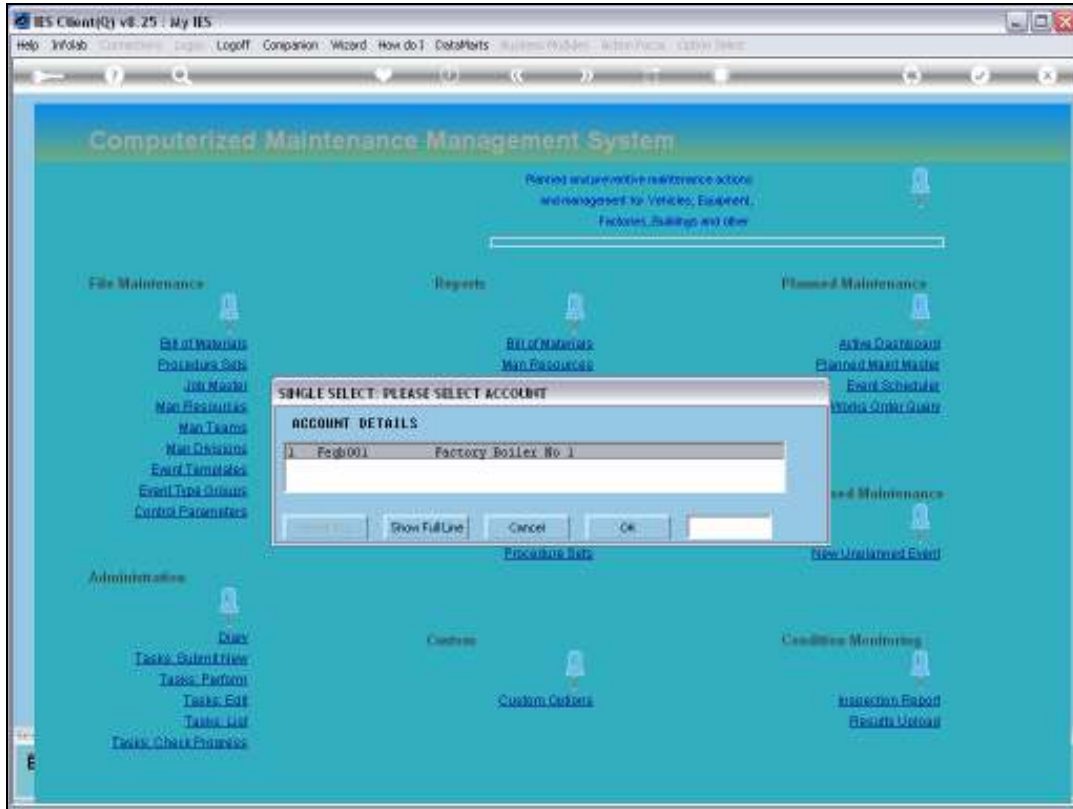
Slide notes: First we need to select the Master Maintenance Item.



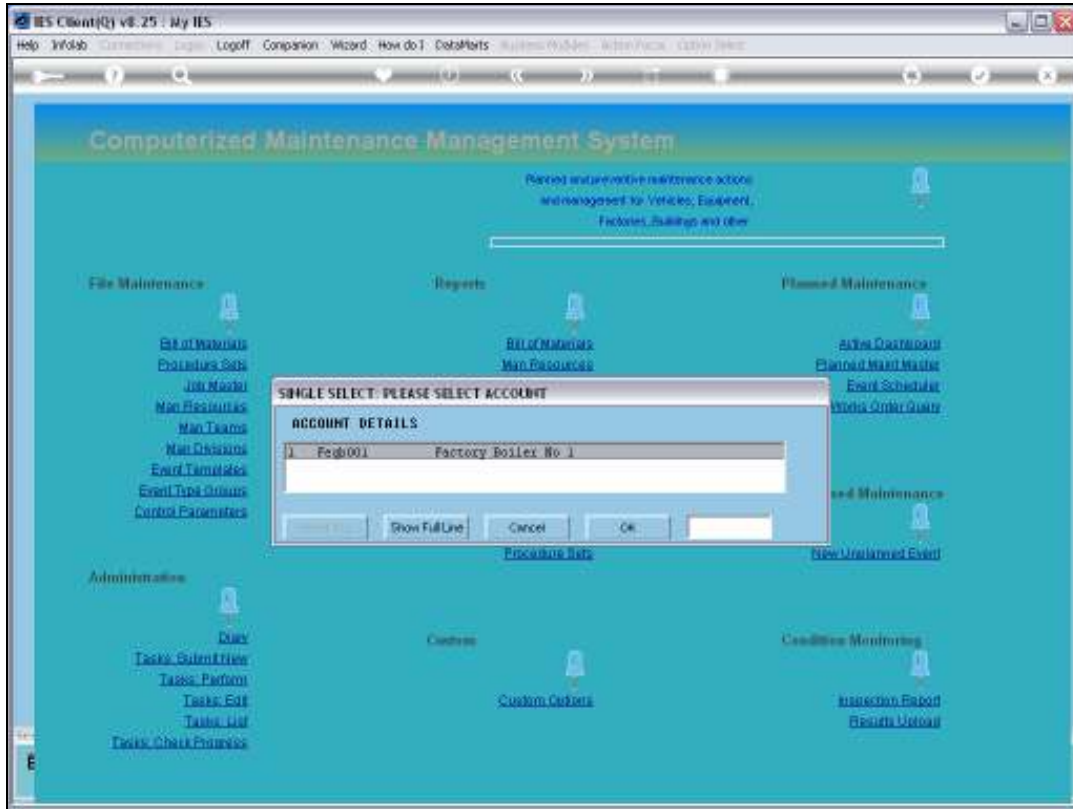
Slide 6
Slide notes:



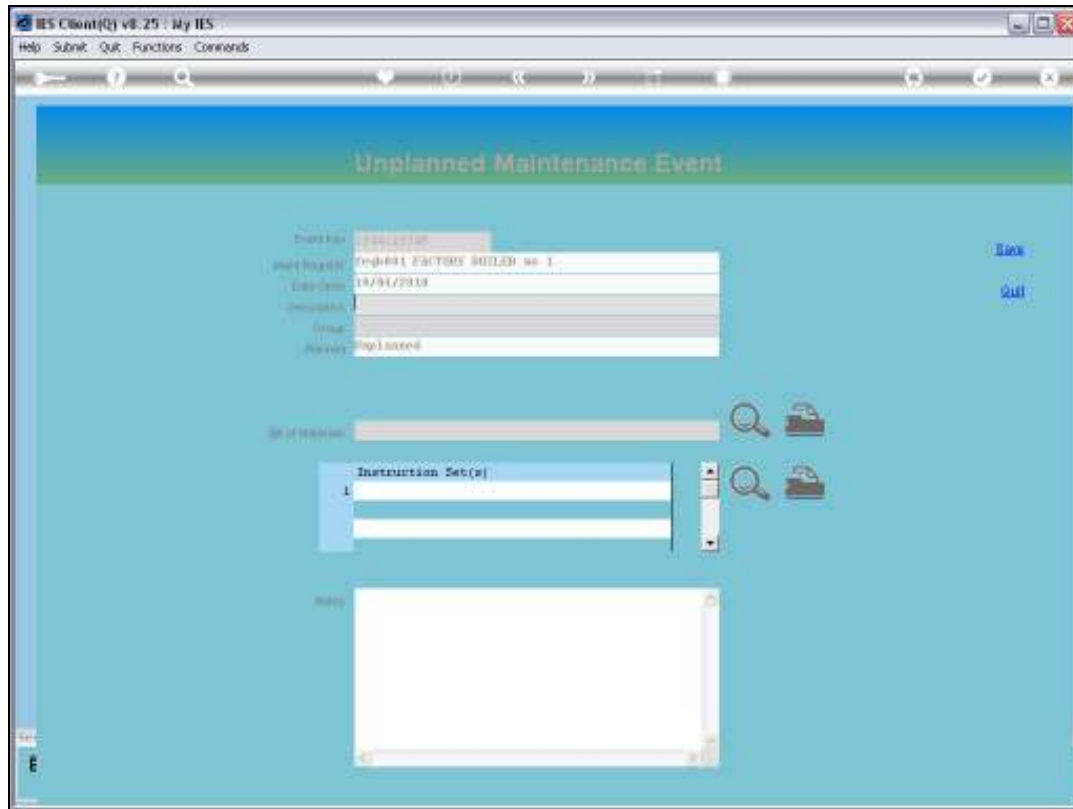
Slide 7
Slide notes:



Slide 8
Slide notes:



Slide 9
Slide notes:



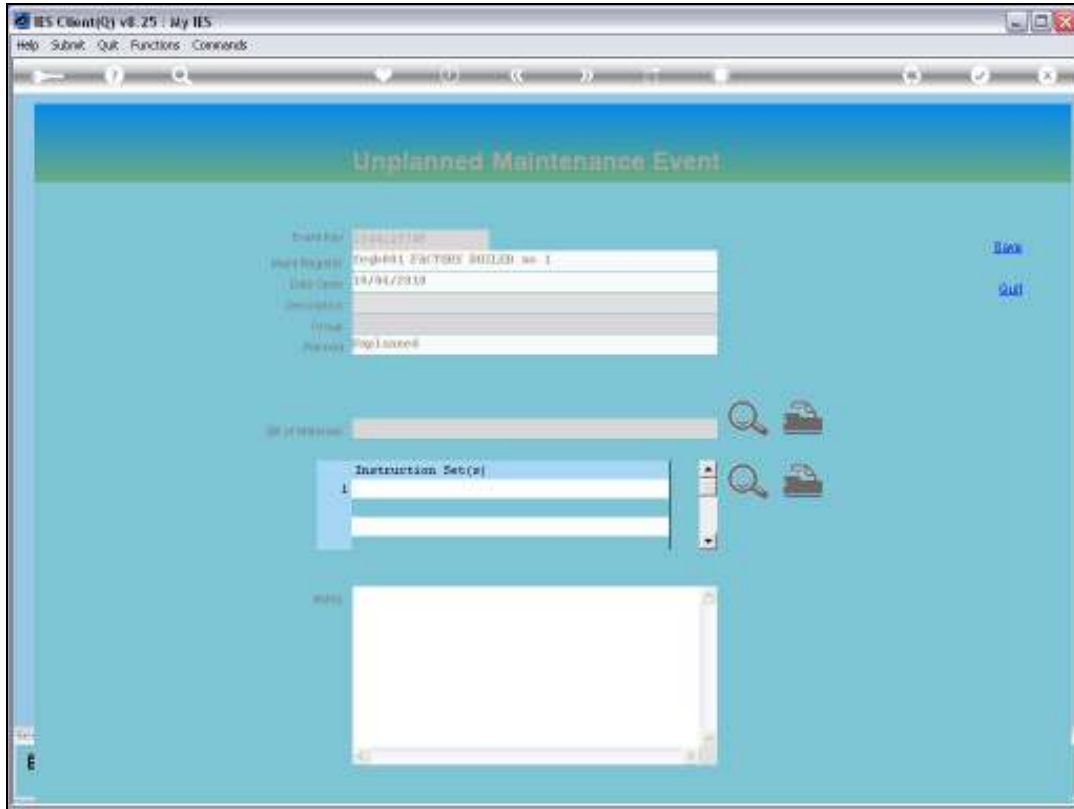
The screenshot shows a web browser window titled "IES Client v8.25: My IES". The browser's address bar is empty, and the page title is "Unplanned Maintenance Event". The page content includes a form with the following fields:

- Event No:** 00000000
- Plant Region:** 000001 FACTORY BUILDED no 1
- Date Code:** 18/04/2010
- Description:**
- Order:**
- Priority:** High/Low/Off

There are "Back" and "Quit" buttons on the right side of the form. Below the form, there is a section for "Instruction Set(s)" with a search icon and a lock icon. The "Instruction Set(s)" field contains the value "1".

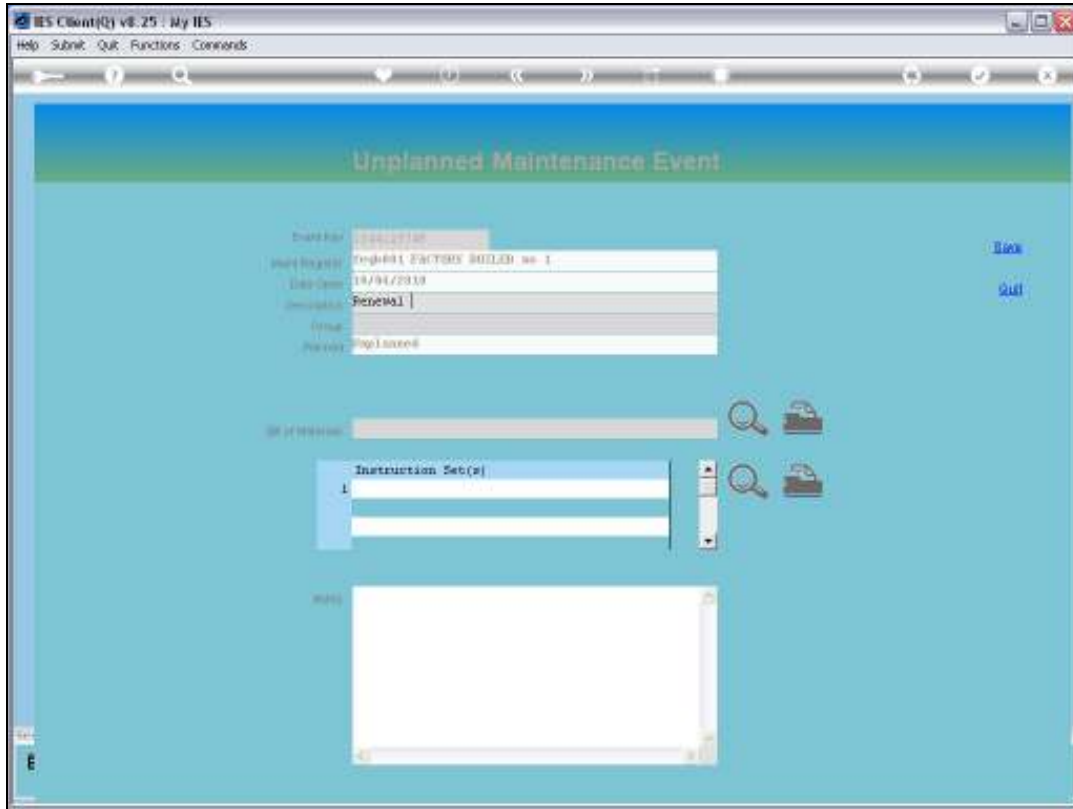
Slide 10

Slide notes: And from here it is straight forward. We need a short description of the anticipated maintenance task, and also to select the Group association.



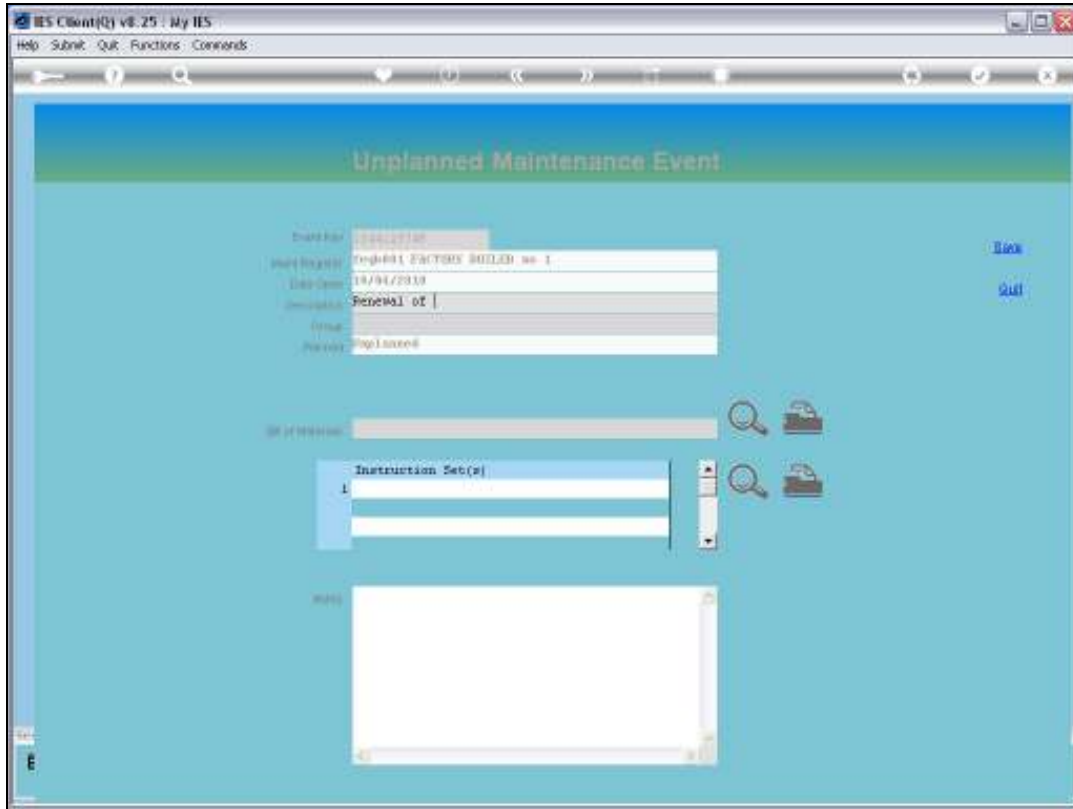
Slide 11

Slide notes:



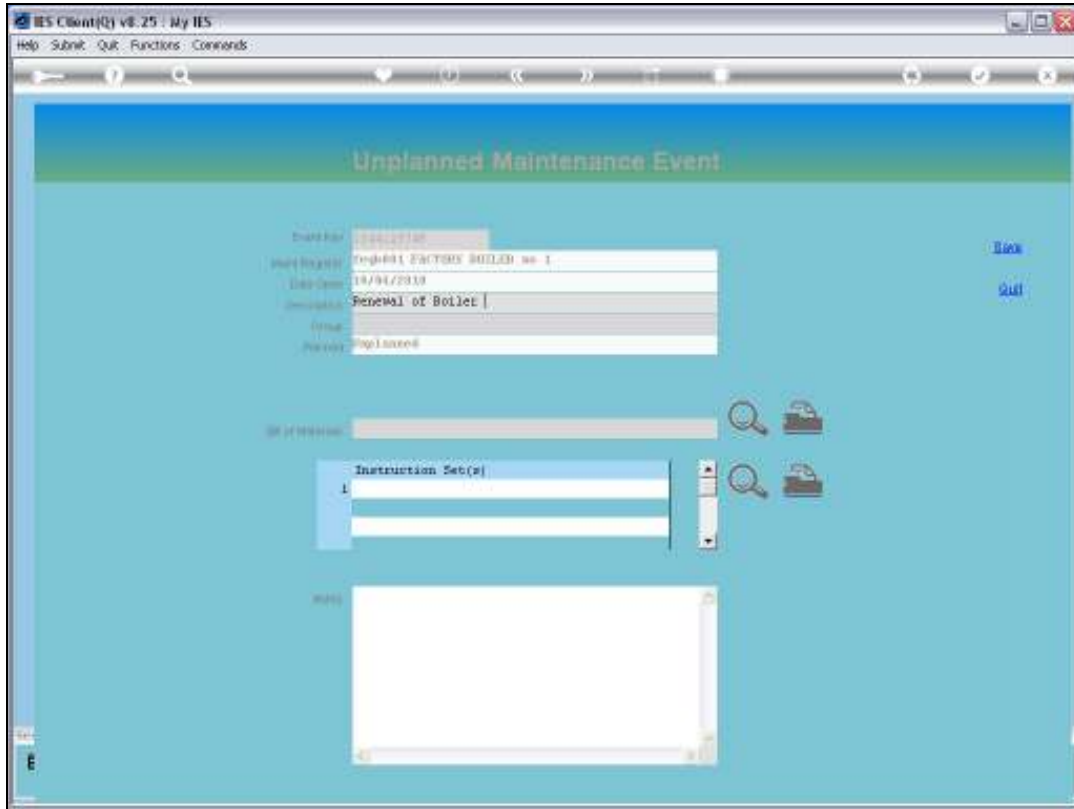
Slide 12

Slide notes:



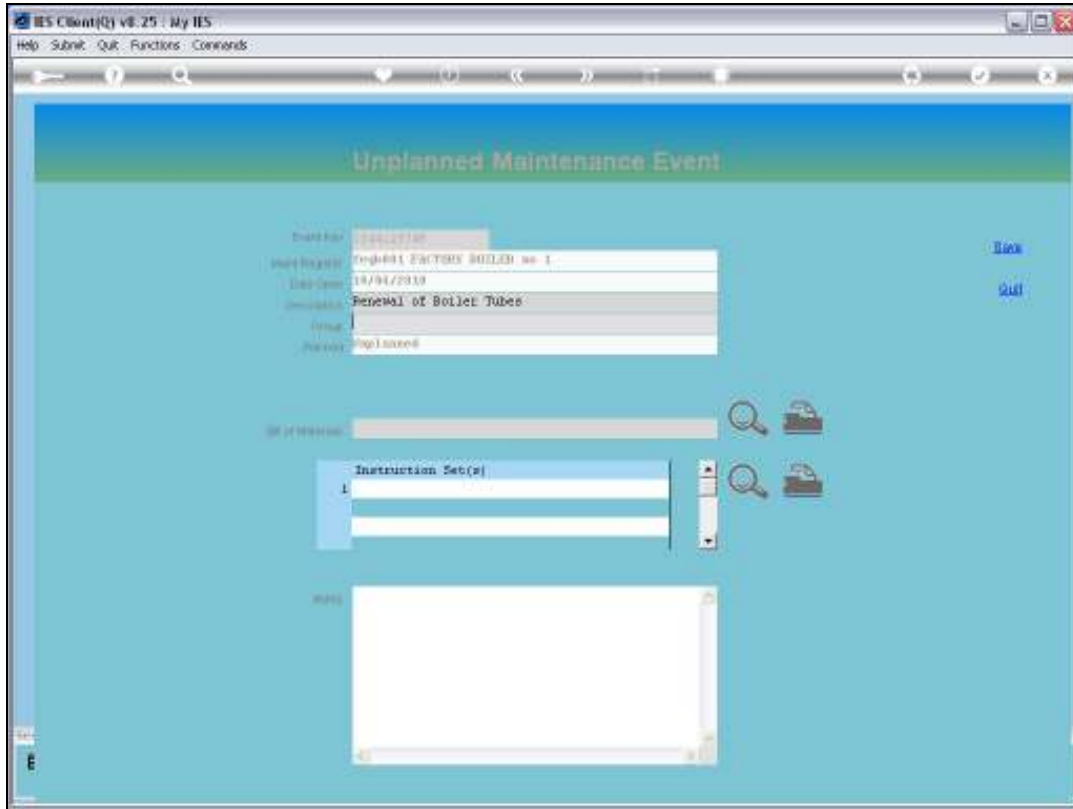
Slide 13

Slide notes:



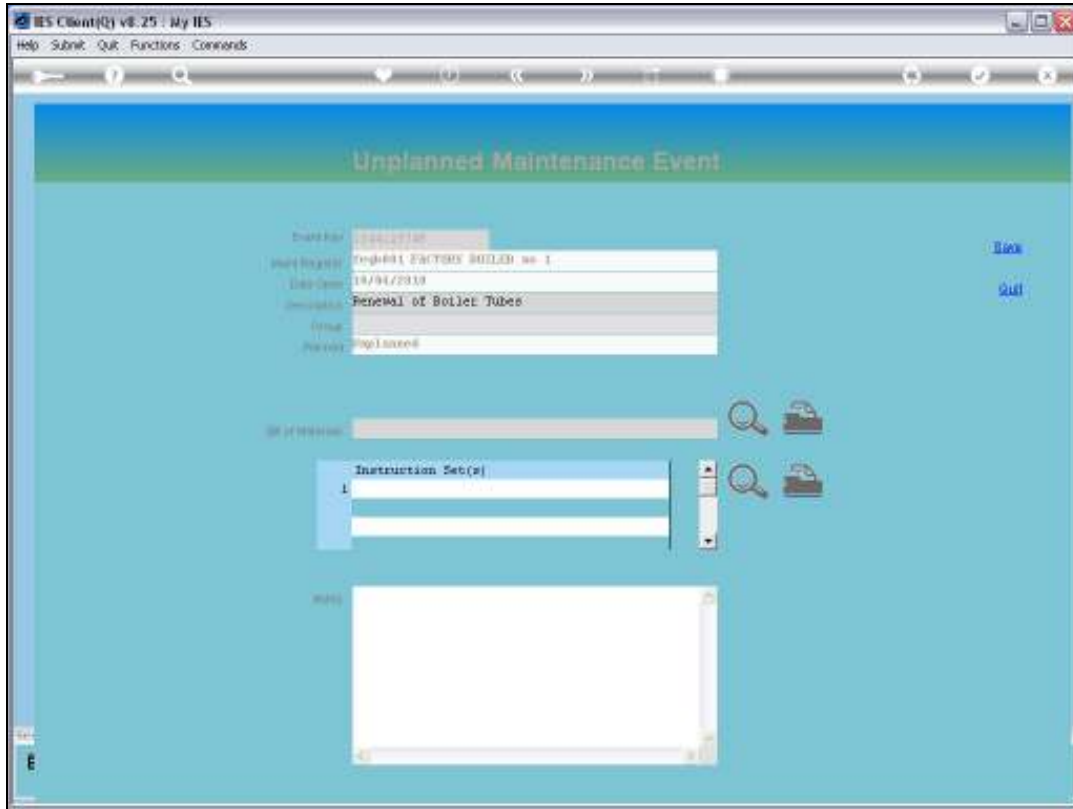
Slide 14

Slide notes:



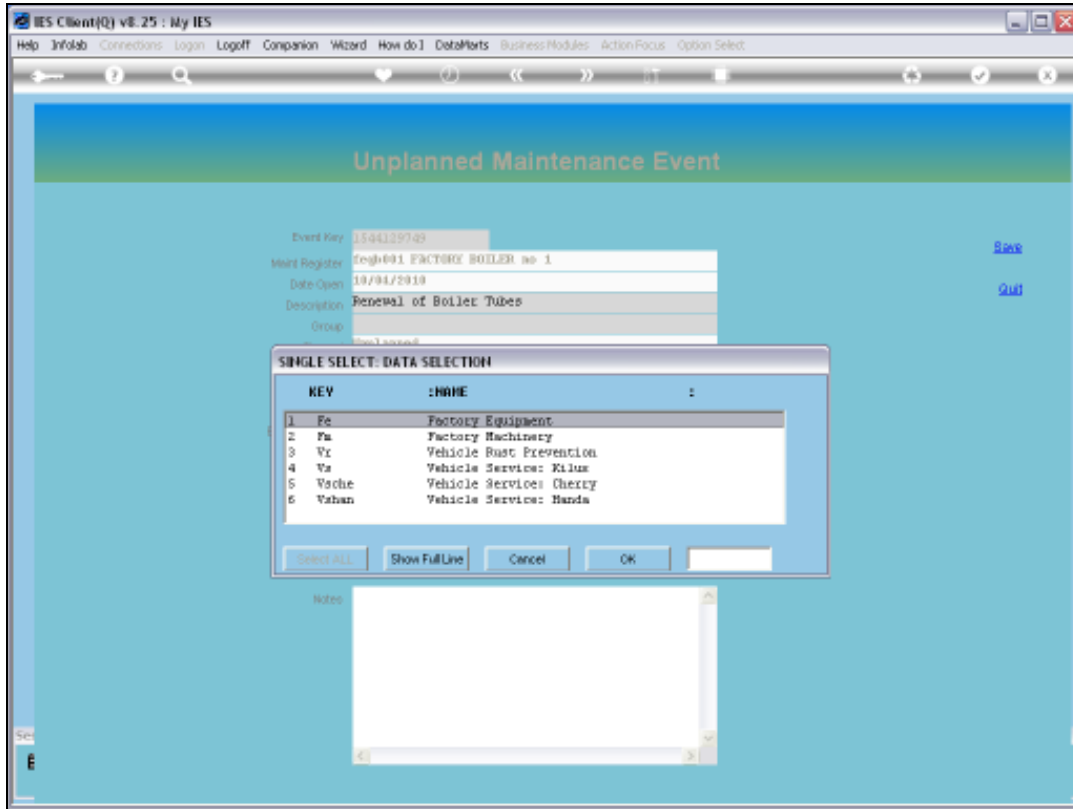
Slide 15

Slide notes:



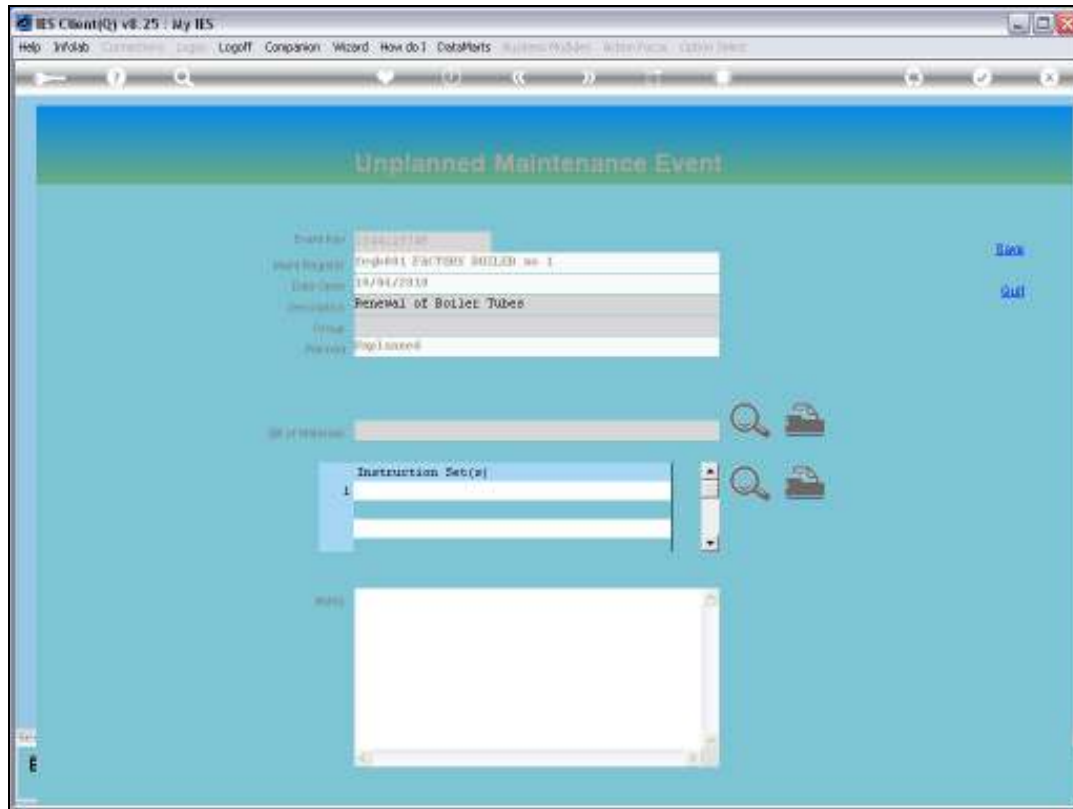
Slide 16

Slide notes:



Slide 17

Slide notes:



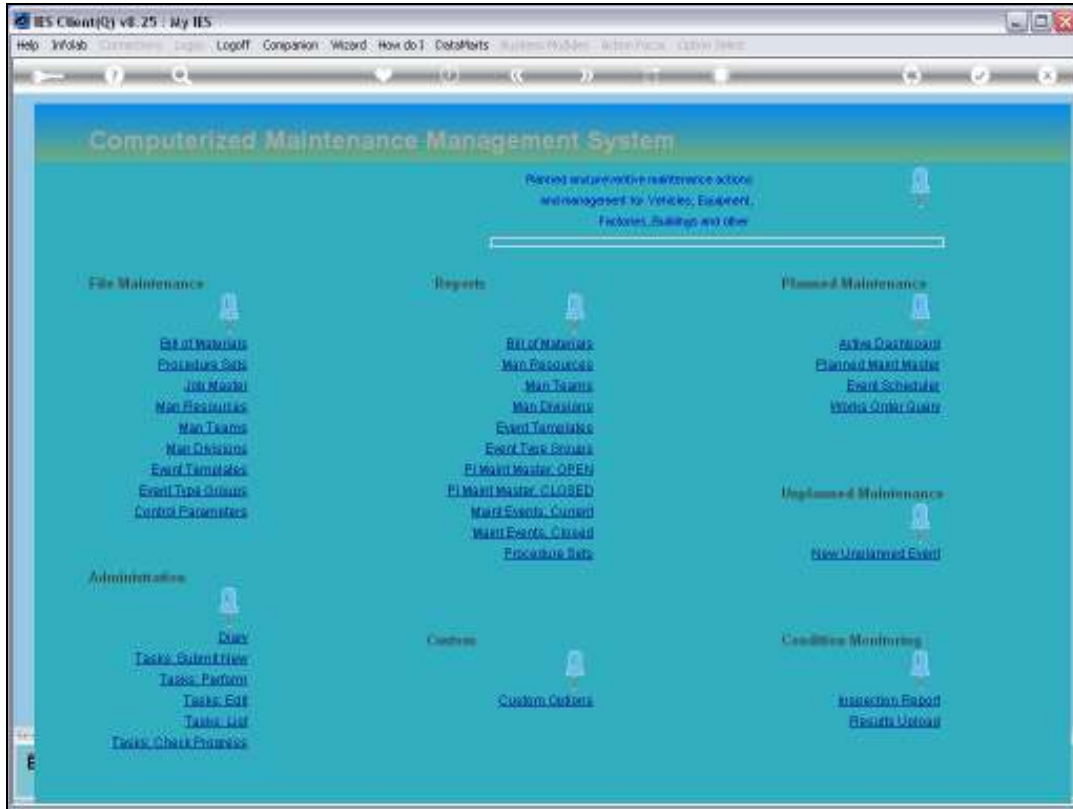
The screenshot shows a web browser window titled "IES Client(v8.25) - My IES". The browser's address bar and menu bar are visible. The main content area has a blue header with the text "Unplanned Maintenance Event". Below the header, there is a form with several fields:

- Event ID:** 100000000
- Plant Region:** 010001 FACTORY BLDG no 1
- Date Code:** 18/04/2010
- Description:** RENEWAL OF Boiler Tubes
- Unit:** [Empty]
- Priority:** High/Low/0

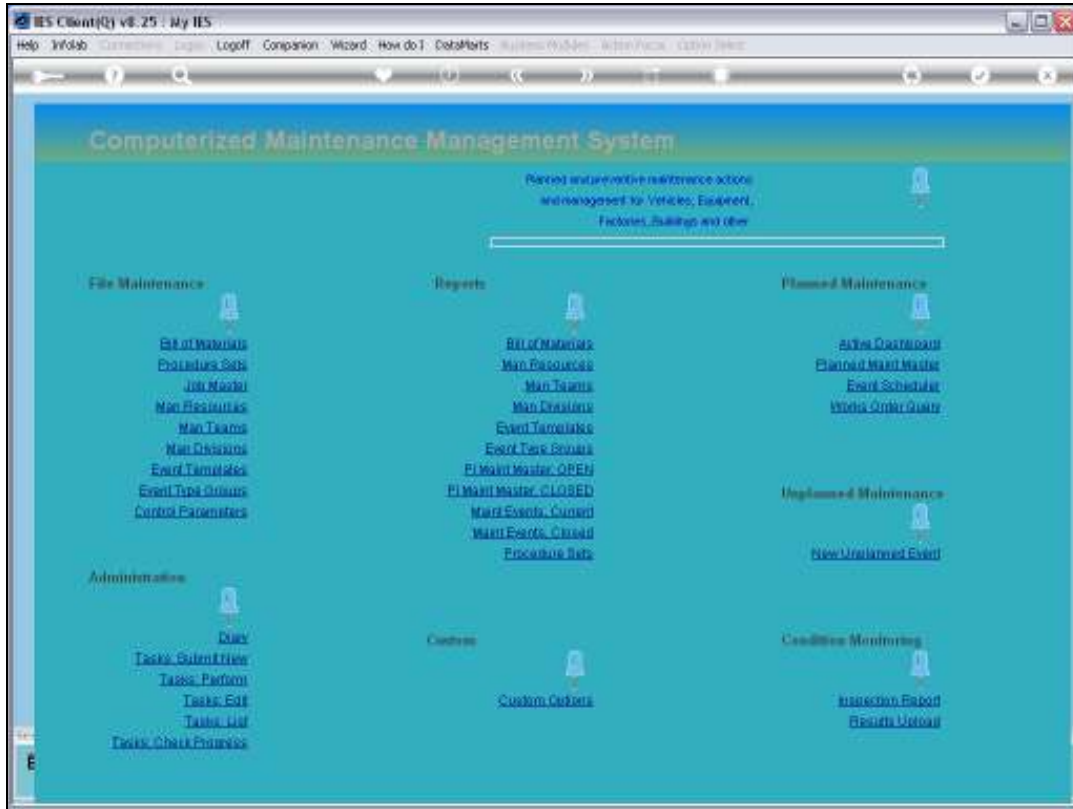
On the right side of the form, there are two blue links: "Back" and "Quit". Below the form, there is a section for "Bill of Materials" with a search icon and a lock icon. Underneath that is a section for "Instruction Set(s)" with a list containing the number "1" and another search icon and lock icon. At the bottom, there is a large empty text area labeled "Notes".

Slide 18

Slide notes: We can also include a Bill of Materials now and Procedures as well, if necessary, but it can also be done later. When we SAVE this new Unplanned Event, it will immediately and automatically trigger to become an ACTIVE event, and will show up on the Active Dashboard.



Slide 19
Slide notes:



Slide 20
Slide notes:

Maintenance Event Dashboard

Sort By: [Work Order](#) | [Start Date](#) | [Remove Start Dates](#)

Actions: [Select Start Dates](#) | [Remove Start Dates](#) | [Remove HR](#)

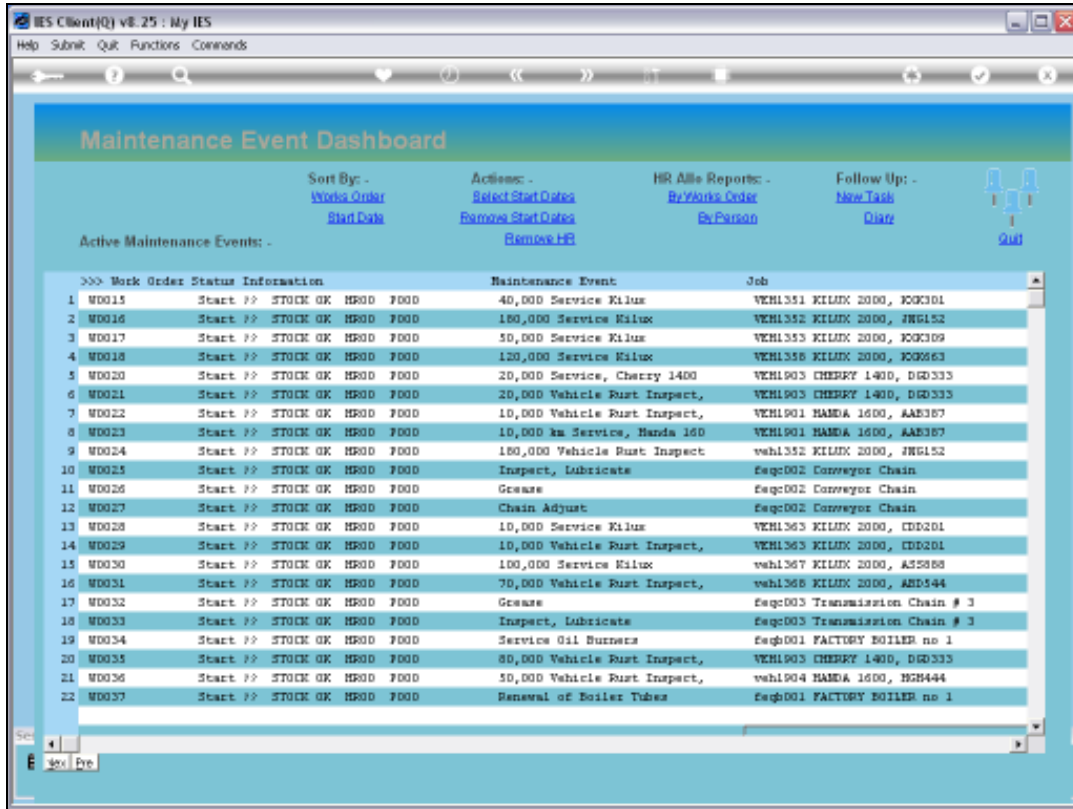
HR All Reports: [By Work Order](#) | [By Person](#)

Follow Up: [New Task](#) | [Diary](#)

Active Maintenance Events: -

Work Order	Status	Information	Maintenance Event	Job
1	Start	STOCK GK HP00 F000	40,000 Service Kilux	VEH1351 KILUX 2000, K0K301
2	Start	STOCK GK HP00 F000	160,000 Service Kilux	VEH1352 KILUX 2000, JRG152
3	Start	STOCK GK HP00 F000	50,000 Service Kilux	VEH1353 KILUX 2000, K0K309
4	Start	STOCK GK HP00 F000	120,000 Service Kilux	VEH1356 KILUX 2000, K0M663
5	Start	STOCK GK HP00 F000	20,000 Service, Cherry 1400	VEH1903 CHERRY 1400, DGD333
6	Start	STOCK GK HP00 F000	20,000 Vehicle Rust Inspect,	VEH1903 CHERRY 1400, DGD333
7	Start	STOCK GK HP00 F000	10,000 Vehicle Rust Inspect,	VEH1901 HANDA 1600, AAE387
8	Start	STOCK GK HP00 F000	10,000 km Service, Handa 160	VEH1901 HANDA 1600, AAE387
9	Start	STOCK GK HP00 F000	160,000 Vehicle Rust Inspect	veh1352 KILUX 2000, JRG152
10	Start	STOCK GK HP00 F000	Inspect, Lubricate	Seq002 Conveyor Chain
11	Start	STOCK GK HP00 F000	Grease	Seq002 Conveyor Chain
12	Start	STOCK GK HP00 F000	Chain Adjust	Seq002 Conveyor Chain
13	Start	STOCK GK HP00 F000	10,000 Service Kilux	VEH1363 KILUX 2000, IDD201
14	Start	STOCK GK HP00 F000	10,000 Vehicle Rust Inspect,	VEH1363 KILUX 2000, IDD201
15	Start	STOCK GK HP00 F000	100,000 Service Kilux	veh1367 KILUX 2000, A35888
16	Start	STOCK GK HP00 F000	70,000 Vehicle Rust Inspect,	veh1368 KILUX 2000, ABD444
17	Start	STOCK GK HP00 F000	Grease	Seq003 Transmission Chain # 3
18	Start	STOCK GK HP00 F000	Inspect, Lubricate	Seq003 Transmission Chain # 3
19	Start	STOCK GK HP00 F000	Service Oil Burners	Seq001 FACTORY BOILER no 1
20	Start	STOCK GK HP00 F000	80,000 Vehicle Rust Inspect,	VEH1903 CHERRY 1400, DGD333
21	Start	STOCK GK HP00 F000	50,000 Vehicle Rust Inspect,	veh1904 HANDA 1600, H2M444
22	Start	STOCK GK HP00 F000	Renewal of Boiler Tubes	Seq001 FACTORY BOILER no 1

Slide 21
Slide notes:



Slide 22

Slide notes: Notice the appearance of the Unplanned Maintenance Event on the Active Dashboard.

Maintenance Event Dashboard

Sort By: [Work Order](#) | [Start Date](#)

Actions: [Select Start Dates](#) | [Remove Start Dates](#) | [Remove HR](#)

HR All Reports: [By Work Order](#) | [By Person](#)

Follow Up: [New Task](#) | [Diary](#)

Active Maintenance Events: -

Work Order	Status	Information	Maintenance Event	Job	
1	MD015	Start ??	STOCK GK HP00 F000	40,000 Service Kilux	VEH1351 KILUX 2000, K0K301
2	MD016	Start ??	STOCK GK HP00 F000	160,000 Service Kilux	VEH1352 KILUX 2000, JRG152
3	MD017	Start ??	STOCK GK HP00 F000	50,000 Service Kilux	VEH1353 KILUX 2000, K0K309
4	MD018	Start ??	STOCK GK HP00 F000	120,000 Service Kilux	VEH1356 KILUX 2000, K0M663
5	MD020	Start ??	STOCK GK HP00 F000	20,000 Service, Cherry 1400	VEH1903 CHERRY 1400, DGD333
6	MD021	Start ??	STOCK GK HP00 F000	20,000 Vehicle Rust Inspect,	VEH1903 CHERRY 1400, DGD333
7	MD022	Start ??	STOCK GK HP00 F000	10,000 Vehicle Rust Inspect,	VEH1901 HANDA 1600, AAE387
8	MD023	Start ??	STOCK GK HP00 F000	10,000 km Service, Handa 160	VEH1901 HANDA 1600, AAE387
9	MD024	Start ??	STOCK GK HP00 F000	160,000 Vehicle Rust Inspect	veh1352 KILUX 2000, JRG152
10	MD025	Start ??	STOCK GK HP00 F000	Inspect, Lubricate	Seq002 Conveyor Chain
11	MD026	Start ??	STOCK GK HP00 F000	Grease	Seq002 Conveyor Chain
12	MD027	Start ??	STOCK GK HP00 F000	Chain Adjust	Seq002 Conveyor Chain
13	MD028	Start ??	STOCK GK HP00 F000	10,000 Service Kilux	VEH1363 KILUX 2000, CDD201
14	MD029	Start ??	STOCK GK HP00 F000	10,000 Vehicle Rust Inspect,	VEH1363 KILUX 2000, CDD201
15	MD030	Start ??	STOCK GK HP00 F000	100,000 Service Kilux	veh1367 KILUX 2000, A35888
16	MD031	Start ??	STOCK GK HP00 F000	70,000 Vehicle Rust Inspect,	veh1368 KILUX 2000, AHD444
17	MD032	Start ??	STOCK GK HP00 F000	Grease	Seq003 Transmission Chain # 3
18	MD033	Start ??	STOCK GK HP00 F000	Inspect, Lubricate	Seq003 Transmission Chain # 3
19	MD034	Start ??	STOCK GK HP00 F000	Service Oil Burners	Seq001 FACTORY BOILER no 1
20	MD035	Start ??	STOCK GK HP00 F000	80,000 Vehicle Rust Inspect,	VEH1903 CHERRY 1400, DGD333
21	MD036	Start ??	STOCK GK HP00 F000	50,000 Vehicle Rust Inspect,	veh1904 HANDA 1600, H2M444
22	MD037	Start ??	STOCK GK HP00 F000	Renewal of Boiler Tubes	Seq001 FACTORY BOILER no 1

Slide 23
Slide notes: