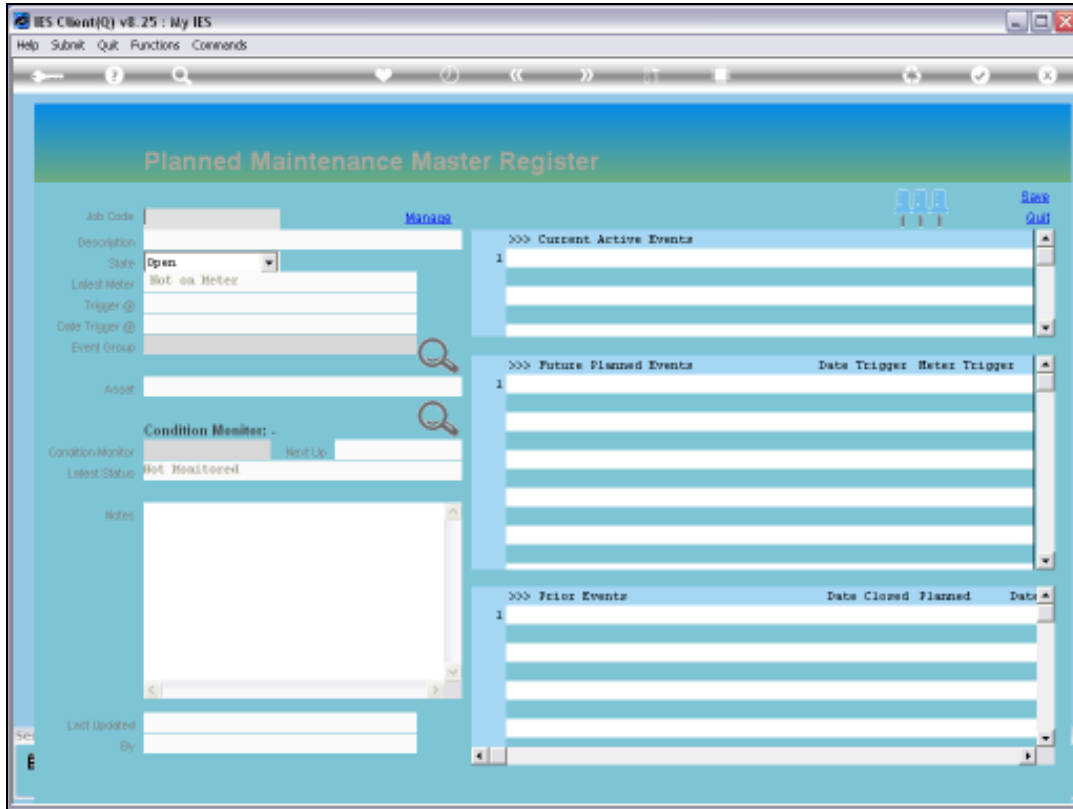
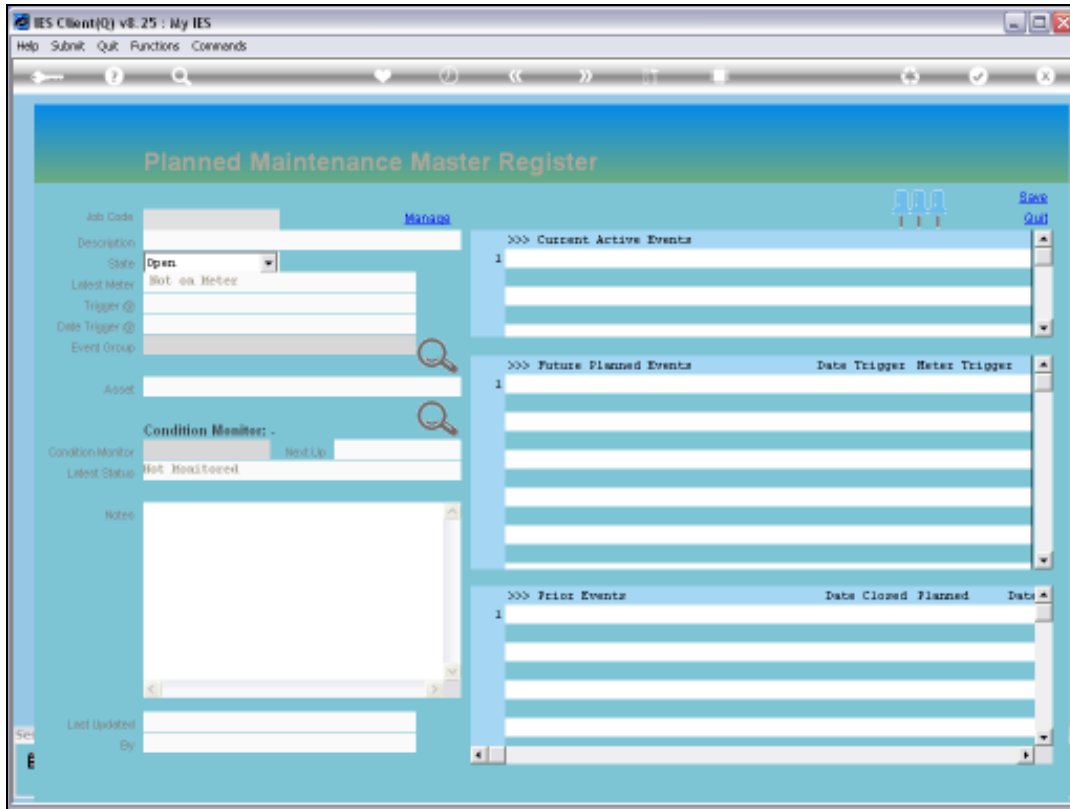


Slide 1

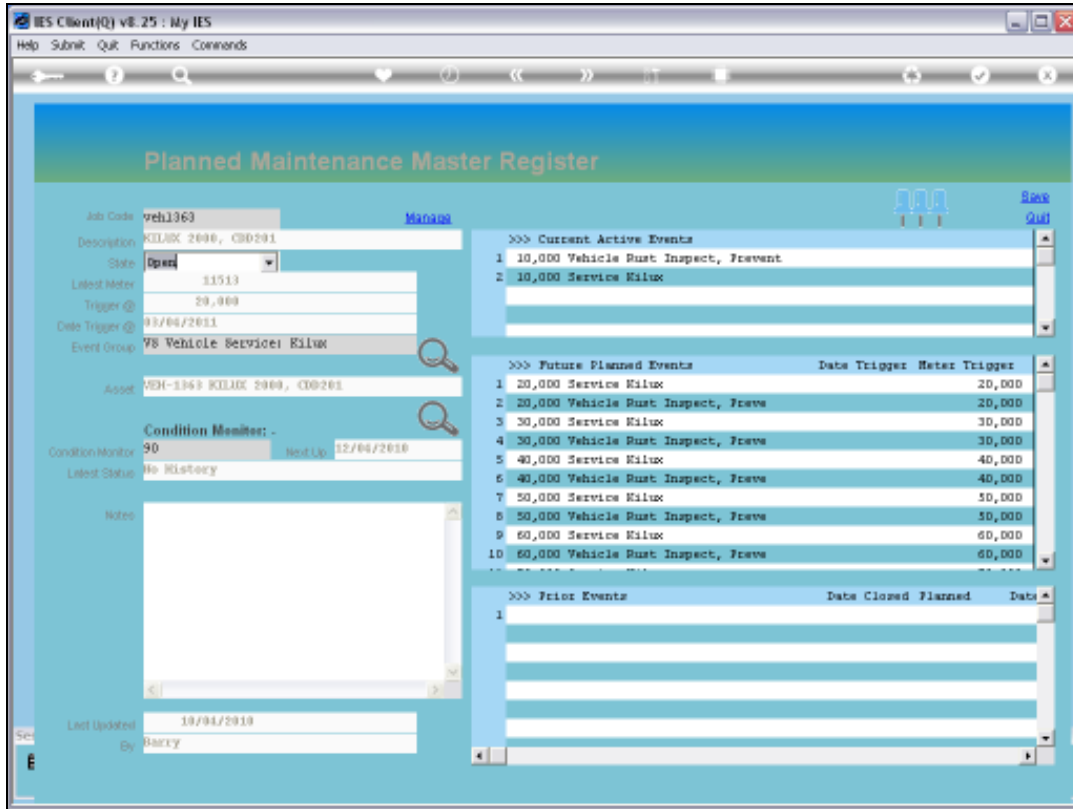
Slide notes: In this tutorial we look at how to access a Current Maintenance Event. It can of course be done from the Planned Maintenance Master Item.



Slide 2
Slide notes:

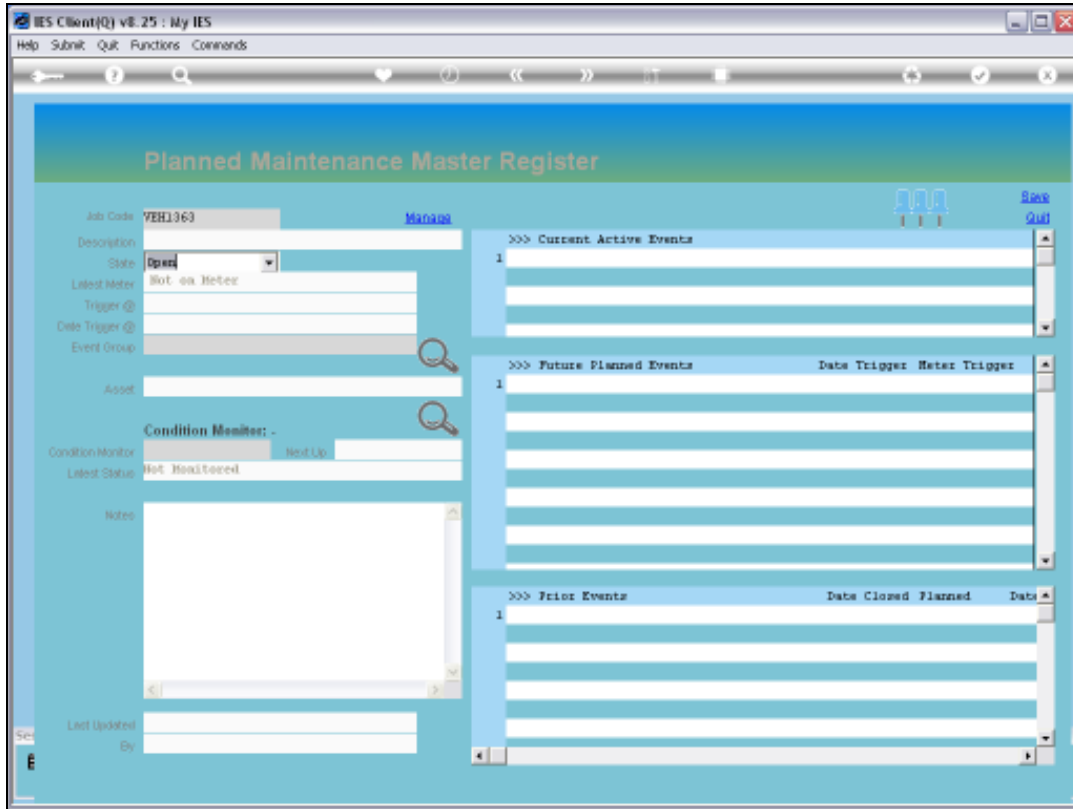


Slide 3
Slide notes:

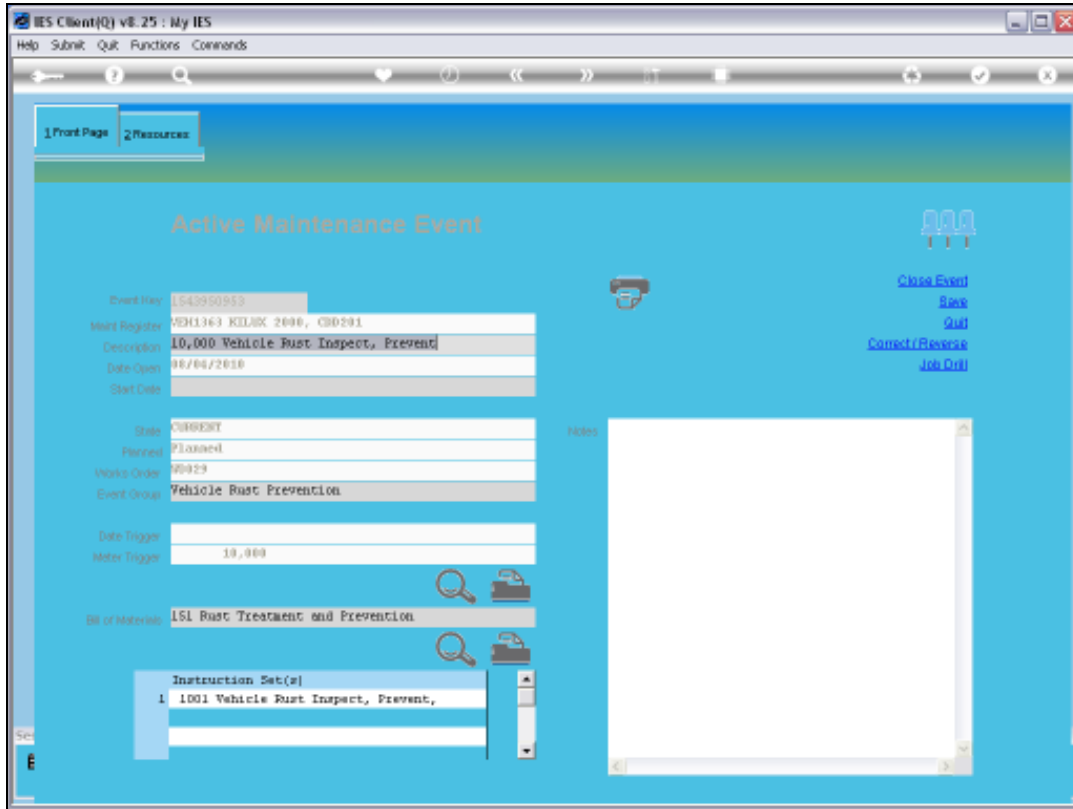


Slide 4

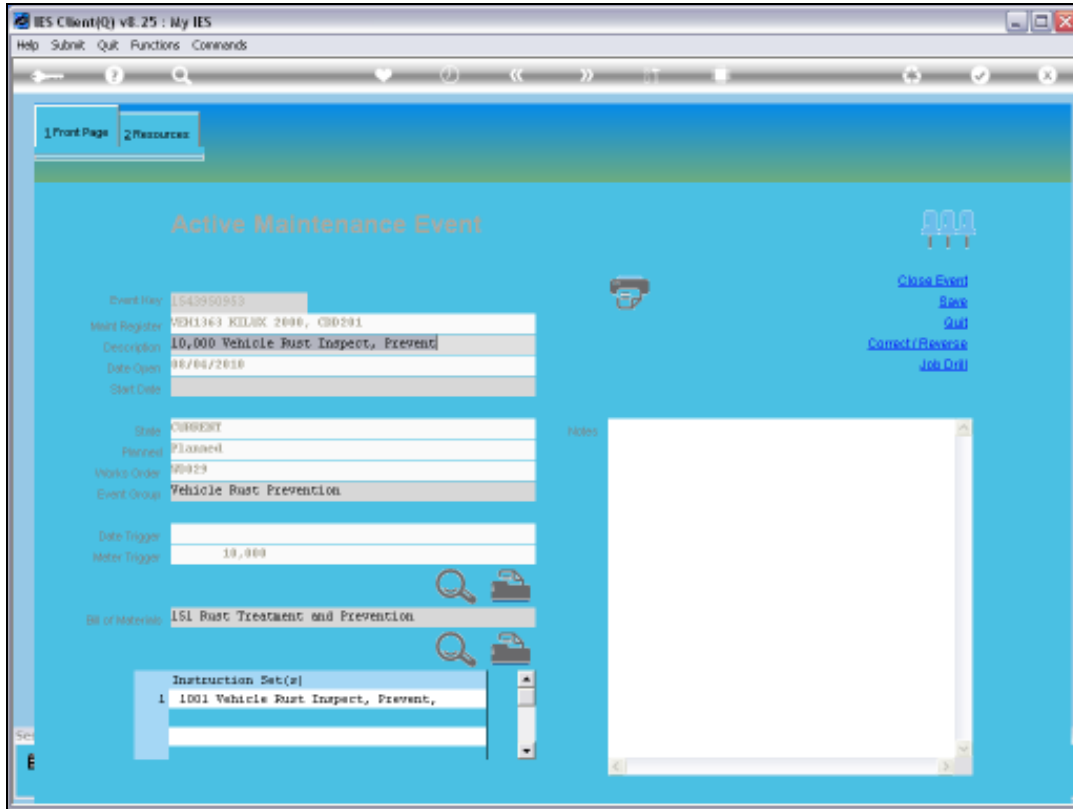
Slide notes: And in this case, we can just dbl-click on the Event inside the 'Current Active' grid.



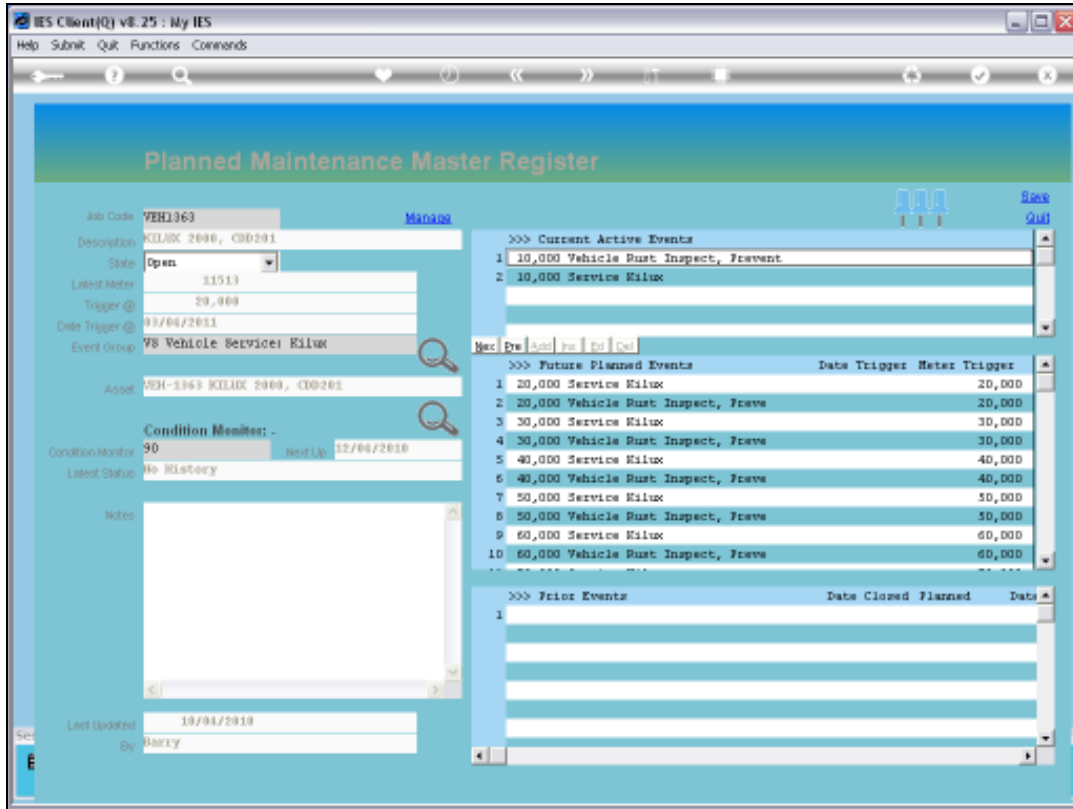
Slide 5
Slide notes:



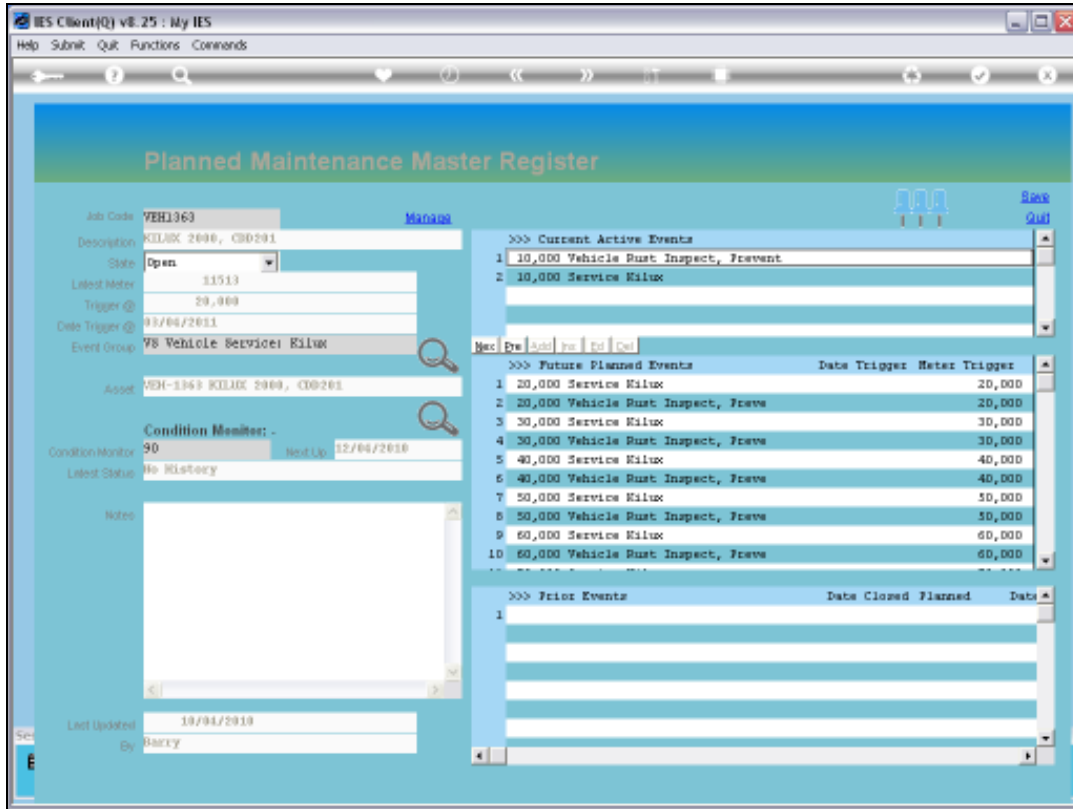
Slide 6
Slide notes:



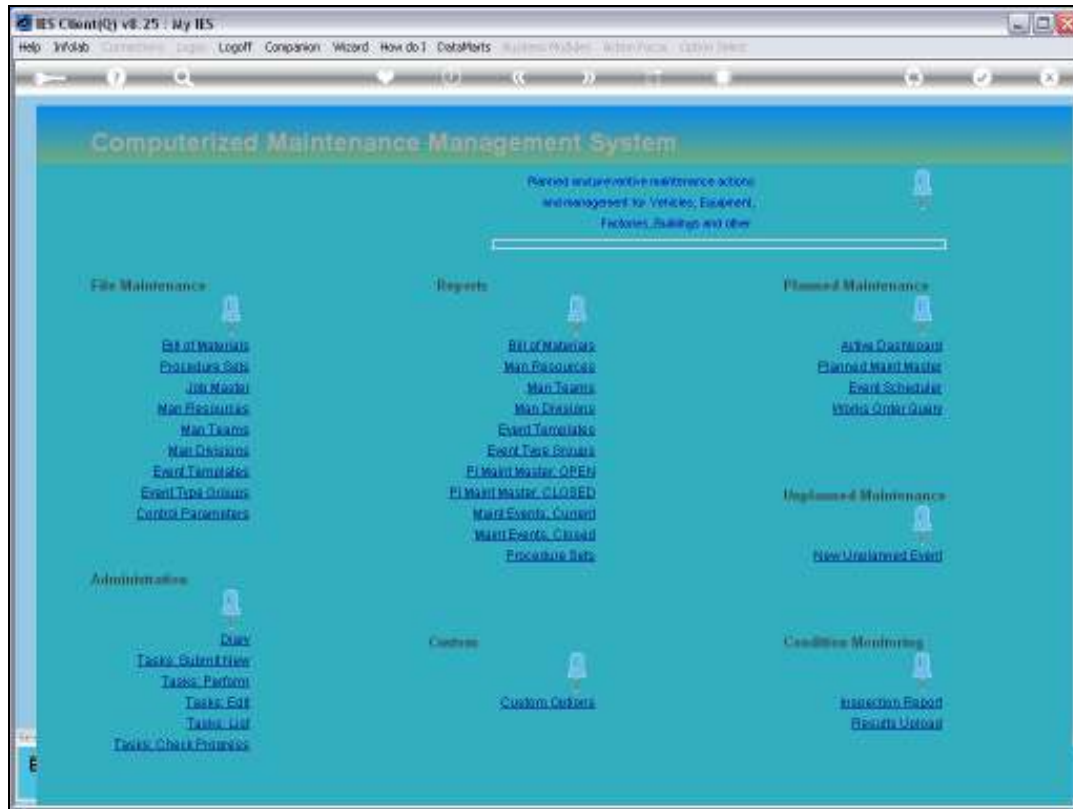
Slide 7
Slide notes:



Slide 8
Slide notes:

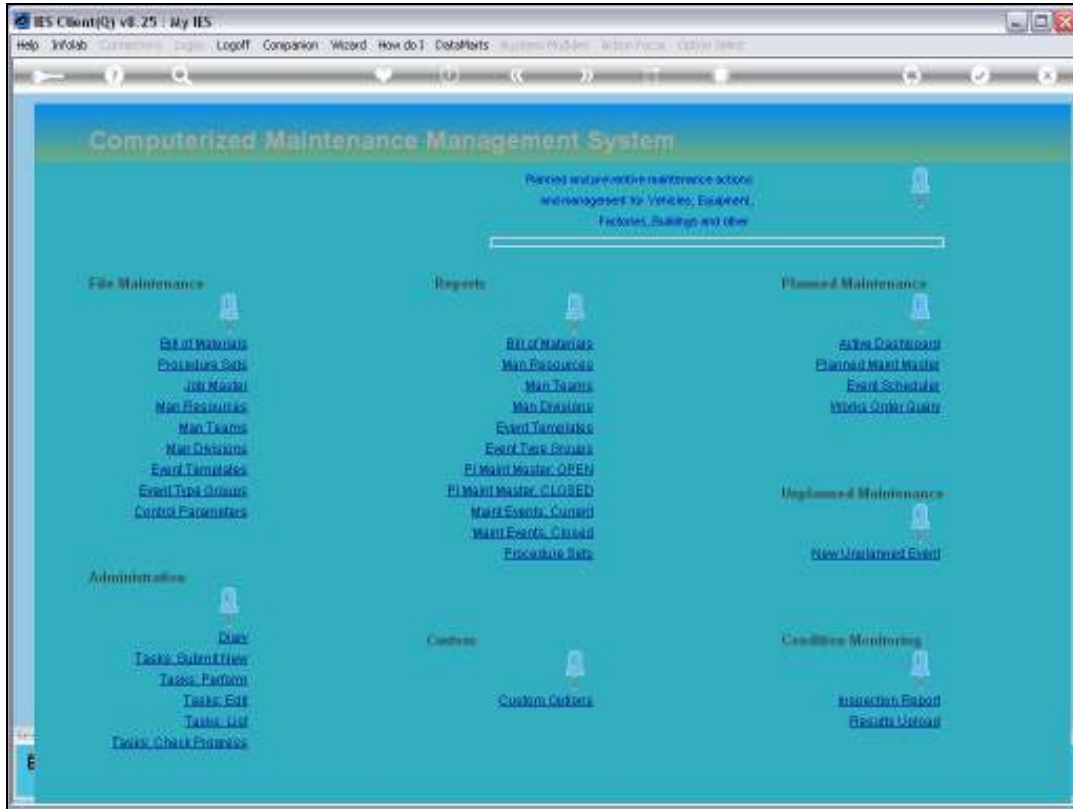


Slide 9
Slide notes:

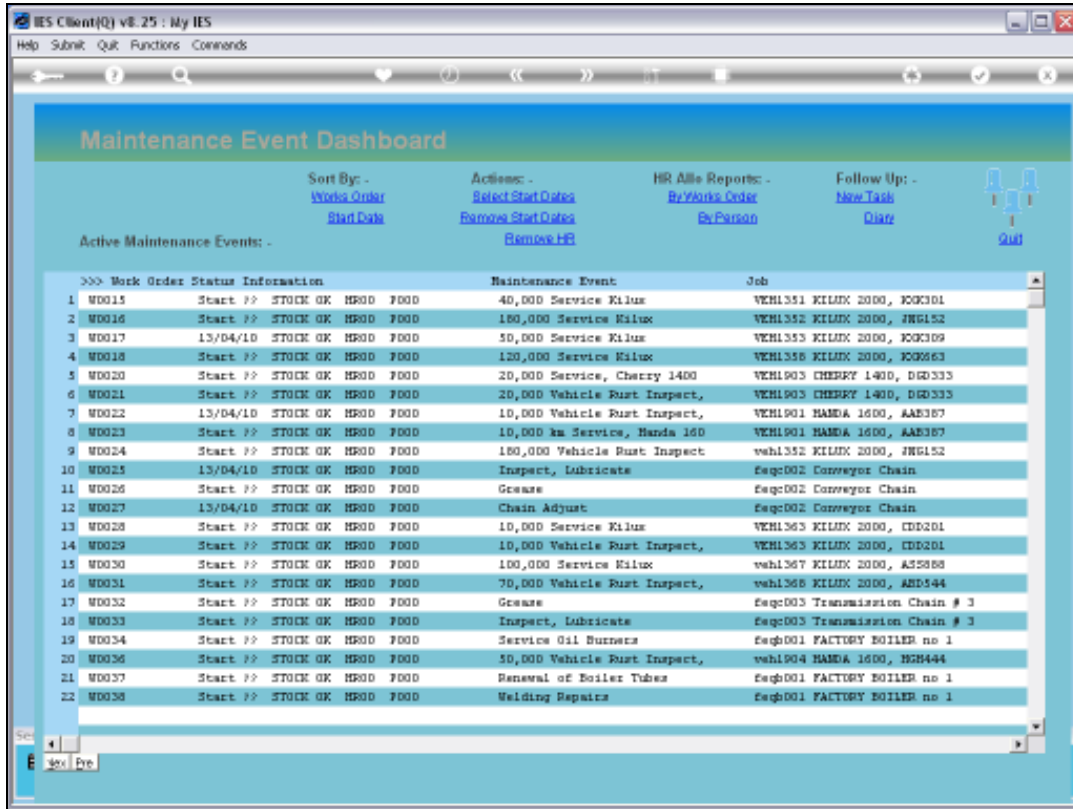


Slide 10

Slide notes: It is a lot more common though, that the Current Active Maintenance Events are accessed directly from the Active Dashboard.

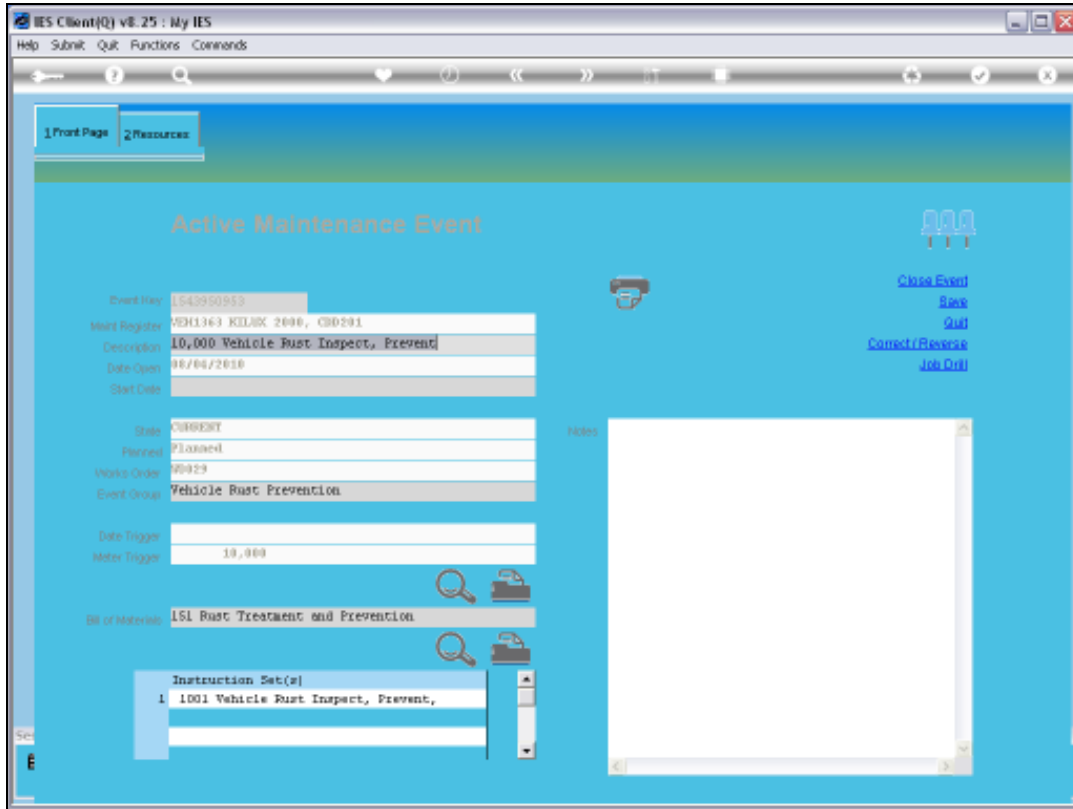


Slide 11
Slide notes:



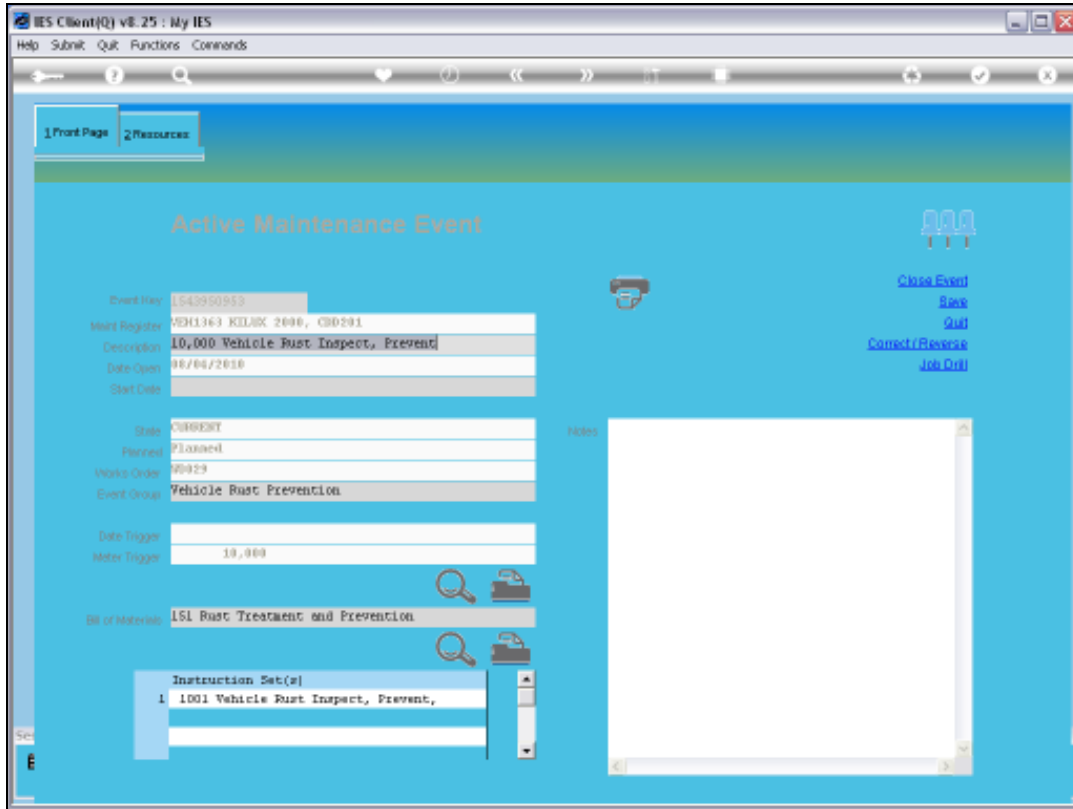
Slide 12

Slide notes: On the Active Dashboard, we can access any Current Maintenance Event by dbl-clicking on it, and without going through the Maintenance Master.



Slide 13

Slide notes:



Slide 14

Slide notes:

Maintenance Event Dashboard

Sort By: [Work Order](#) | [Start Date](#) | [Remove Start Dates](#)

Actions: [Select Start Dates](#) | [Remove Start Dates](#) | [Remove HR](#)

HR All Reports: [By Work Order](#) | [By Person](#)

Follow Up: [New Task](#) | [Diary](#)

Active Maintenance Events: -

Work Order	Status	Info	Maintenance Event	Job
1	Start	STOCK GK HP00 F000	40,000 Service Kilux	VEH1351 KILUX 2000, K0K301
2	Start	STOCK GK HP00 F000	160,000 Service Kilux	VEH1352 KILUX 2000, JRG152
3	13/04/10	STOCK GK HP00 F000	50,000 Service Kilux	VEH1353 KILUX 2000, K0K309
4	Start	STOCK GK HP00 F000	120,000 Service Kilux	VEH1356 KILUX 2000, K0M663
5	Start	STOCK GK HP00 F000	20,000 Service, Cherry 1400	VEH1903 CHERRY 1400, DGD333
6	Start	STOCK GK HP00 F000	20,000 Vehicle Rust Inspect,	VEH1903 CHERRY 1400, DGD333
7	13/04/10	STOCK GK HP00 F000	10,000 Vehicle Rust Inspect,	VEH1901 HANDA 1600, AAE387
8	Start	STOCK GK HP00 F000	10,000 km Service, Honda 160	VEH1901 HANDA 1600, AAE387
9	Start	STOCK GK HP00 F000	160,000 Vehicle Rust Inspect	veh1352 KILUX 2000, JRG152
10	13/04/10	STOCK GK HP00 F000	Inspect, Lubricate	Seq002 Conveyor Chain
11	Start	STOCK GK HP00 F000	Grease	Seq002 Conveyor Chain
12	13/04/10	STOCK GK HP00 F000	Chain Adjust	Seq002 Conveyor Chain
13	Start	STOCK GK HP00 F000	10,000 Service Kilux	VEH1363 KILUX 2000, CDD201
14	Start	STOCK GK HP00 F000	10,000 Vehicle Rust Inspect,	VEH1363 KILUX 2000, CDD201
15	Start	STOCK GK HP00 F000	100,000 Service Kilux	veh1367 KILUX 2000, A35888
16	Start	STOCK GK HP00 F000	70,000 Vehicle Rust Inspect,	veh1368 KILUX 2000, AHD444
17	Start	STOCK GK HP00 F000	Grease	Seq003 Transmission Chain # 3
18	Start	STOCK GK HP00 F000	Inspect, Lubricate	Seq003 Transmission Chain # 3
19	Start	STOCK GK HP00 F000	Service Oil Burners	Seq001 FACTORY BOILER no 1
20	Start	STOCK GK HP00 F000	50,000 Vehicle Rust Inspect,	veh1904 HANDA 1600, H2H444
21	Start	STOCK GK HP00 F000	Renewal of Boiler Tubes	Seq001 FACTORY BOILER no 1
22	Start	STOCK GK HP00 F000	Welding Repairs	Seq001 FACTORY BOILER no 1

Slide 15
Slide notes:

The screenshot shows a web browser window titled "IES Client v8.25 : My IES". The main content area is a "Maintenance Event Dashboard". At the top, there are several menu items: "Sort By: - Works Order", "Actions: - Select Start Dates", "HR All Reports: - By Works Order", and "Follow Up: - New Task". Below these are sub-links: "Start Date", "Remove Start Dates", "By Person", "New Task", and "Diary". There is also a "Quit" button with a person icon. The main section is titled "Active Maintenance Events: -" and contains a table with the following columns: "Work Order Status Information", "Maintenance Event", and "Job". The table lists 22 work orders (W0015 to W0038) with their respective start dates, statuses, descriptions, and associated jobs.

Work Order	Status	Start Date	Work Order	Maintenance Event	Job
1 W0015	Start ??		STOCK GK HP00 F000	40,000 Service Kilux	VEH1351 KILUX 2000, K0K301
2 W0016	Start ??		STOCK GK HP00 F000	160,000 Service Kilux	VEH1352 KILUX 2000, JRG152
3 W0017	Start ??	13/04/10	STOCK GK HP00 F000	50,000 Service Kilux	VEH1353 KILUX 2000, K0K309
4 W0018	Start ??		STOCK GK HP00 F000	120,000 Service Kilux	VEH1356 KILUX 2000, K0M663
5 W0020	Start ??		STOCK GK HP00 F000	20,000 Service, Cherry 1400	VEH1903 CHERRY 1400, DGD333
6 W0021	Start ??		STOCK GK HP00 F000	20,000 Vehicle Rust Inspect,	VEH1903 CHERRY 1400, DGD333
7 W0022	Start ??	13/04/10	STOCK GK HP00 F000	10,000 Vehicle Rust Inspect,	VEH1901 HANDA 1600, AAE387
8 W0023	Start ??		STOCK GK HP00 F000	10,000 km Service, Honda 160	VEH1901 HANDA 1600, AAE387
9 W0024	Start ??		STOCK GK HP00 F000	160,000 Vehicle Rust Inspect	veh1352 KILUX 2000, JRG152
10 W0025	Start ??	13/04/10	STOCK GK HP00 F000	Inspect, Lubricate	Eqq002 Conveyor Chain
11 W0026	Start ??		STOCK GK HP00 F000	Grease	Eqq002 Conveyor Chain
12 W0027	Start ??	13/04/10	STOCK GK HP00 F000	Chain Adjust	Eqq002 Conveyor Chain
13 W0028	Start ??		STOCK GK HP00 F000	10,000 Service Kilux	VEH1363 KILUX 2000, CDD201
14 W0029	Start ??		STOCK GK HP00 F000	10,000 Vehicle Rust Inspect,	VEH1363 KILUX 2000, CDD201
15 W0030	Start ??		STOCK GK HP00 F000	100,000 Service Kilux	veh1367 KILUX 2000, ASS888
16 W0031	Start ??		STOCK GK HP00 F000	70,000 Vehicle Rust Inspect,	veh1368 KILUX 2000, ABD444
17 W0032	Start ??		STOCK GK HP00 F000	Grease	Eqq003 Transmission Chain # 3
18 W0033	Start ??		STOCK GK HP00 F000	Inspect, Lubricate	Eqq003 Transmission Chain # 3
19 W0034	Start ??		STOCK GK HP00 F000	Service Oil Burners	Eqq001 FACTORY BOILER no 1
20 W0036	Start ??		STOCK GK HP00 F000	50,000 Vehicle Rust Inspect,	veh1904 HANDA 1600, H2H444
21 W0037	Start ??		STOCK GK HP00 F000	Renewal of Boiler Tubes	Eqq001 FACTORY BOILER no 1
22 W0038	Start ??		STOCK GK HP00 F000	Welding Repairs	Eqq001 FACTORY BOILER no 1

Slide 16
Slide notes: