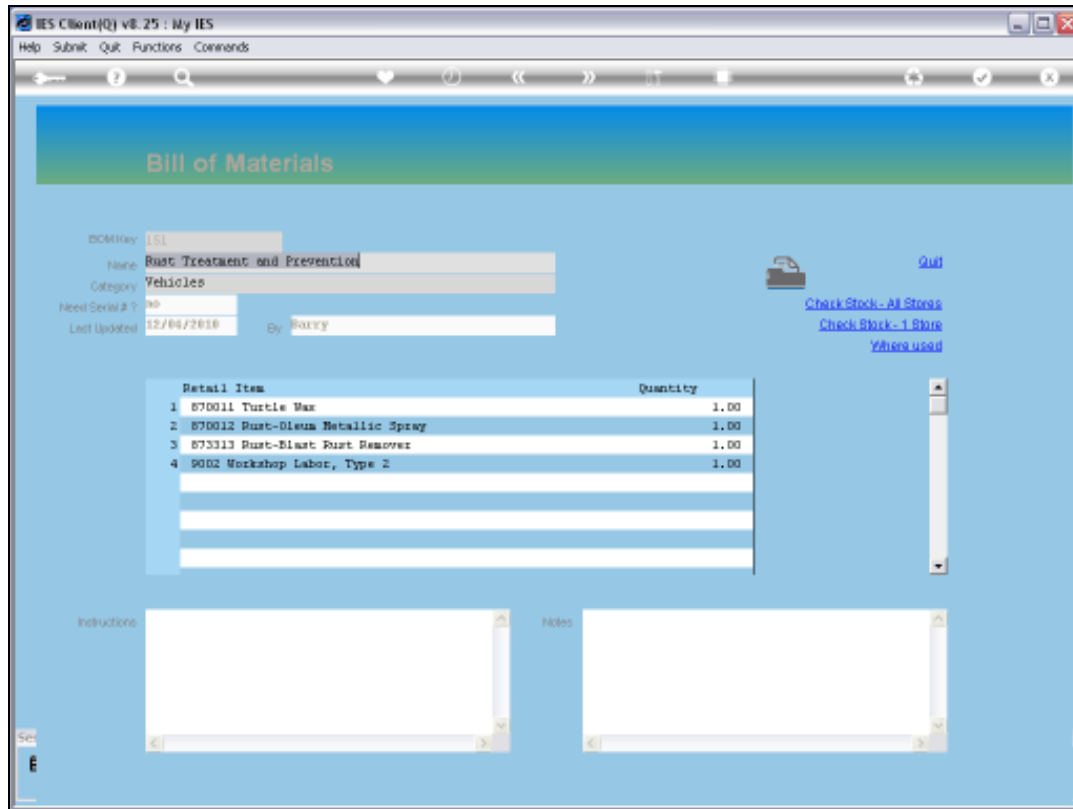


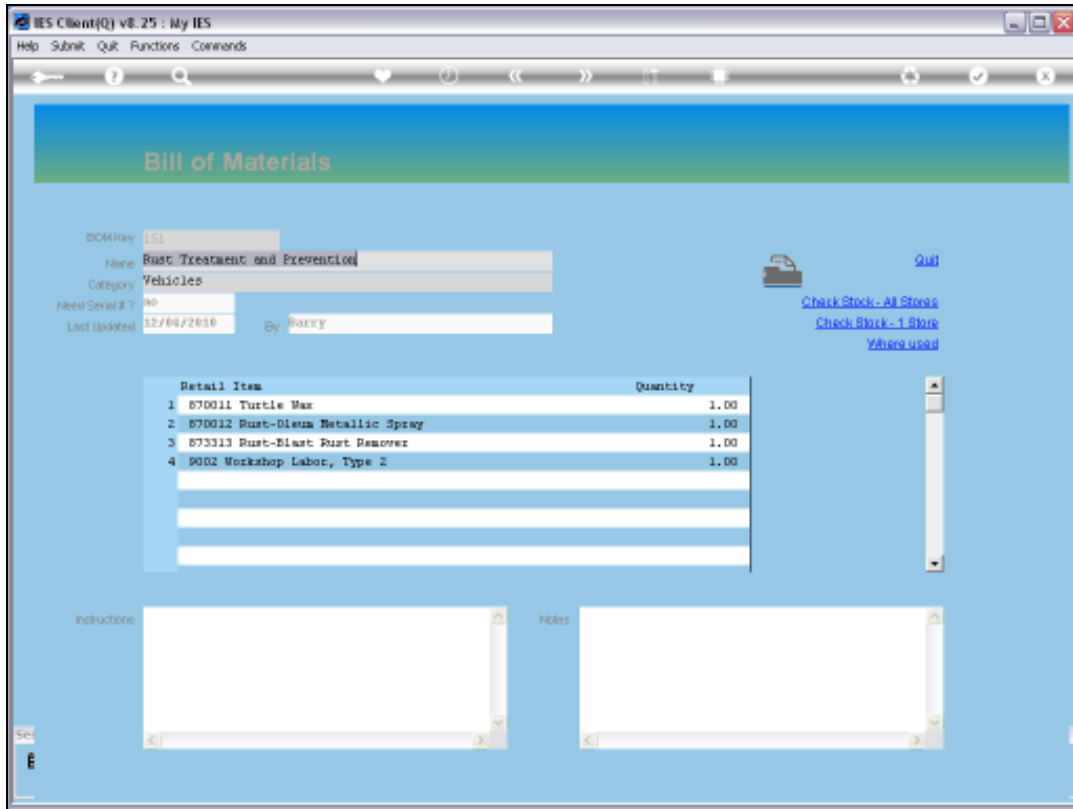
Slide 1

Slide notes: We will now look at how we can verify Stock Availability, how we can Reserve Stock for a Maintenance Event, and how we can Issue that Stock.

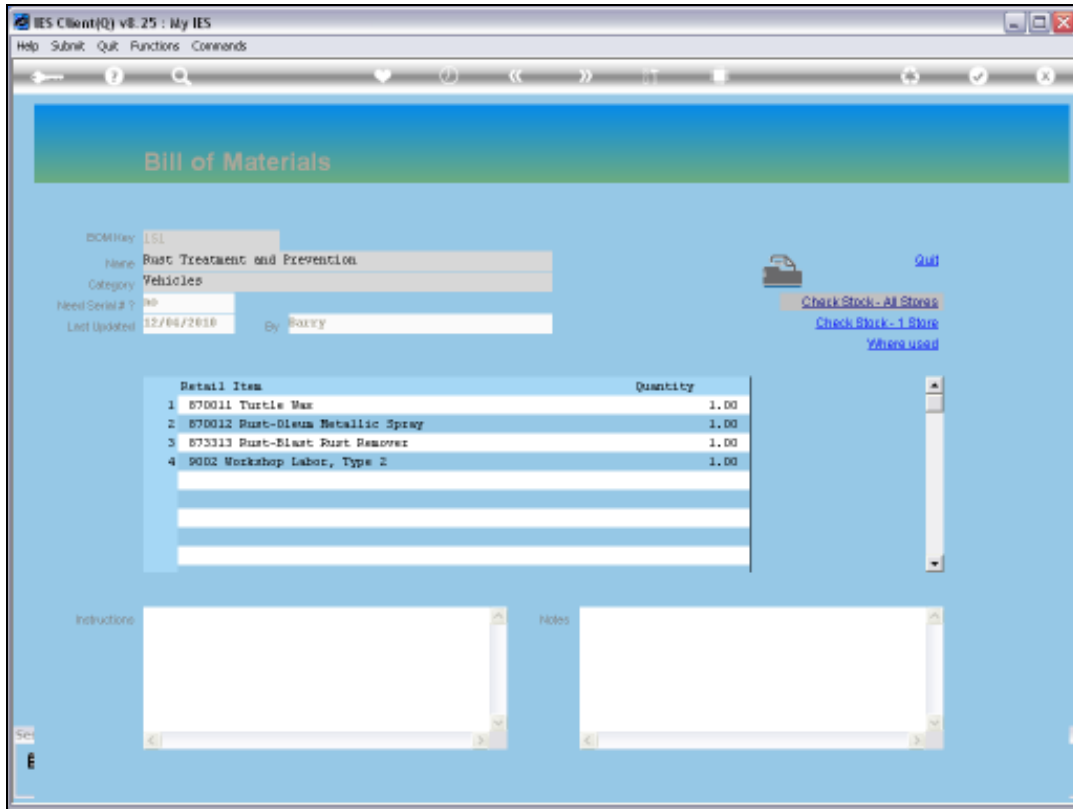


Slide 2

Slide notes: If there is a listed Bill on the Event, then we can drill that Bill and use the standard functions to check Stock Availability.



Slide 3
Slide notes:



Slide 4
Slide notes:

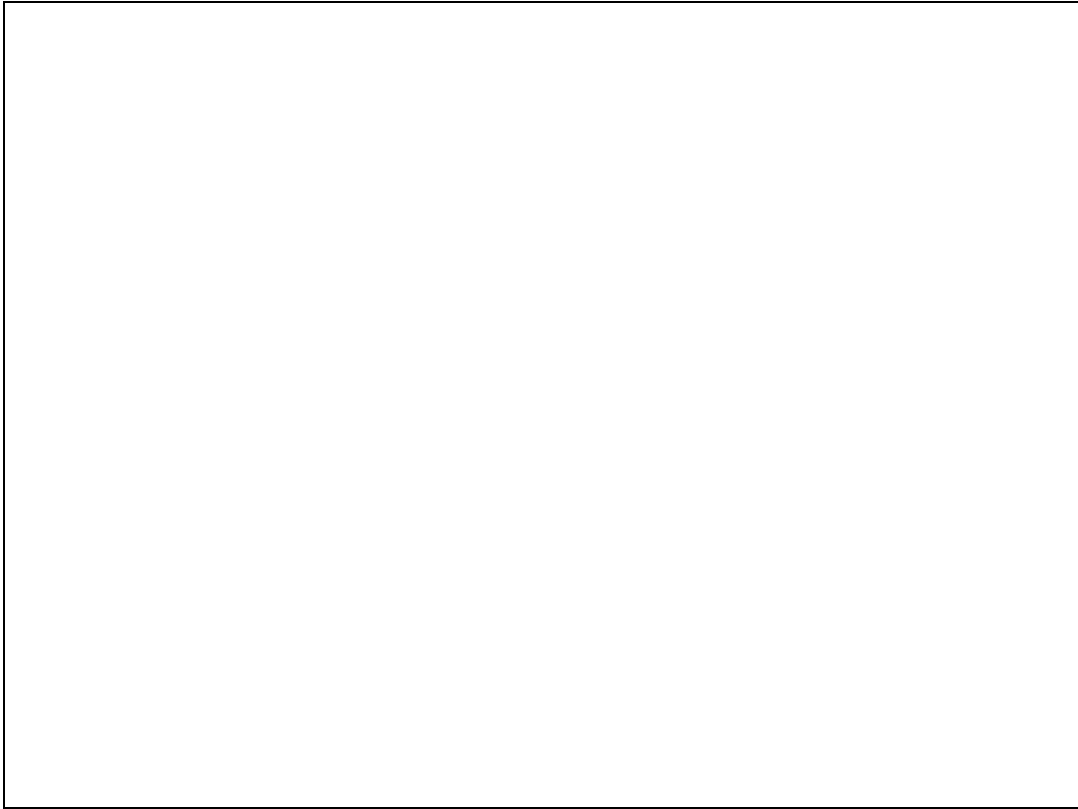
Bill of Materials: Stock Sheet

BOM Key: 151
 BOM Name: Rust Treatment and Prevention

*** ALL STORES ***

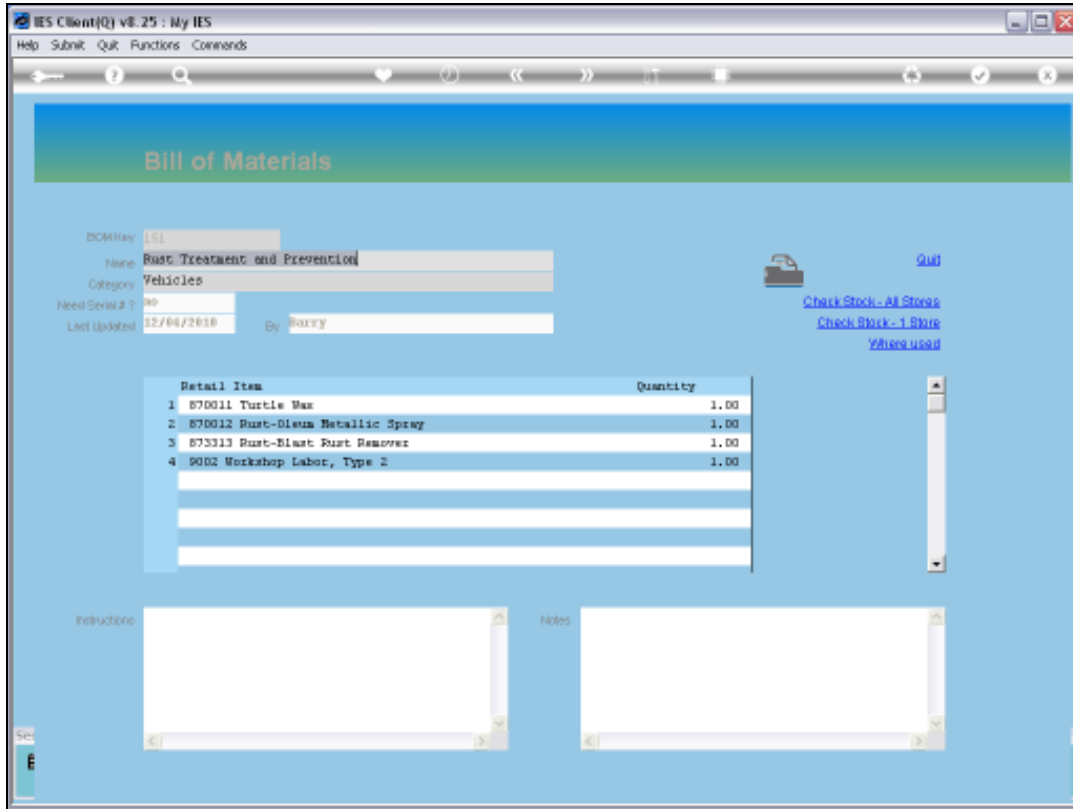
| >>> | Stock Code | Description | Required | On Hand | Available | Short |
|-----|------------|---------------------------|----------|---------|-----------|-------|
| 1 | 870011 | Turtle Wax | 1.00 | 55.00 | 55.00 | 0.00 |
| 2 | 870012 | Rust-Oleum Metallic Spray | 1.00 | 81.00 | 81.00 | 0.00 |
| 3 | 873313 | Rust-Blast Rust Remover | 1.00 | 33.00 | 33.00 | 0.00 |
| | | | | | | |
| | | | | | | |
| | | | | | | |
| | | | | | | |
| | | | | | | |
| | | | | | | |
| | | | | | | |
| | | | | | | |

Slide 5
 Slide notes: We can check the Stock position for all Stores.



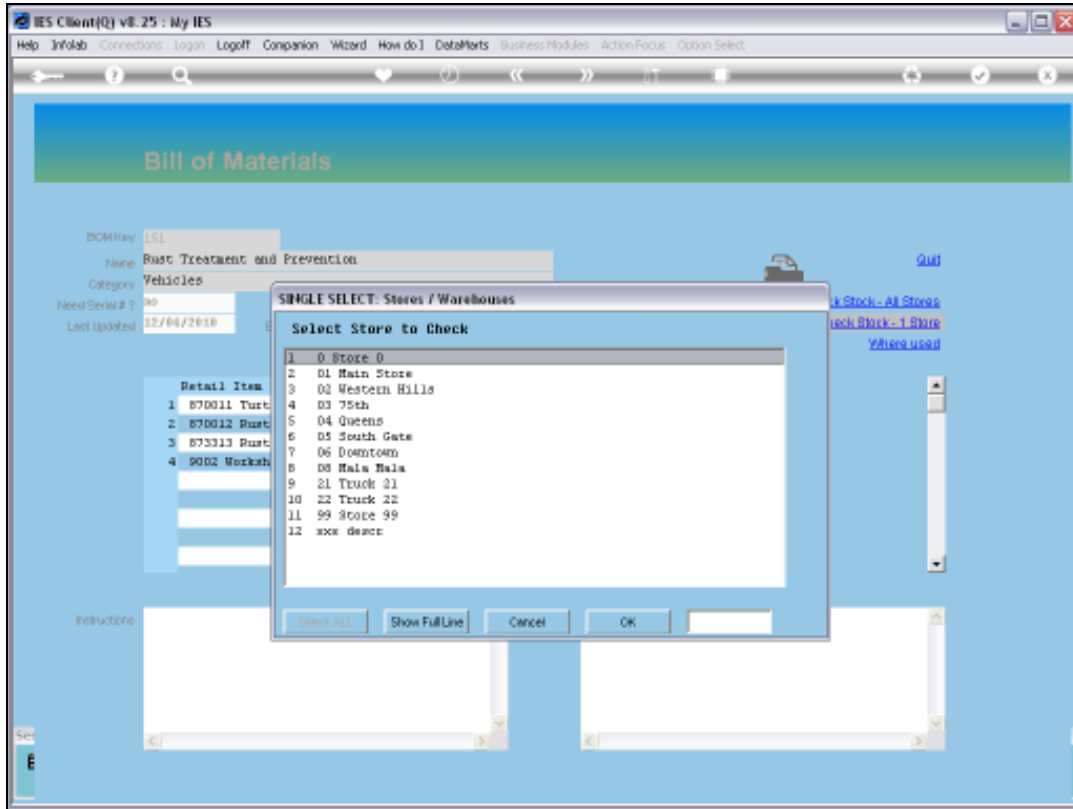
Slide 6

Slide notes:

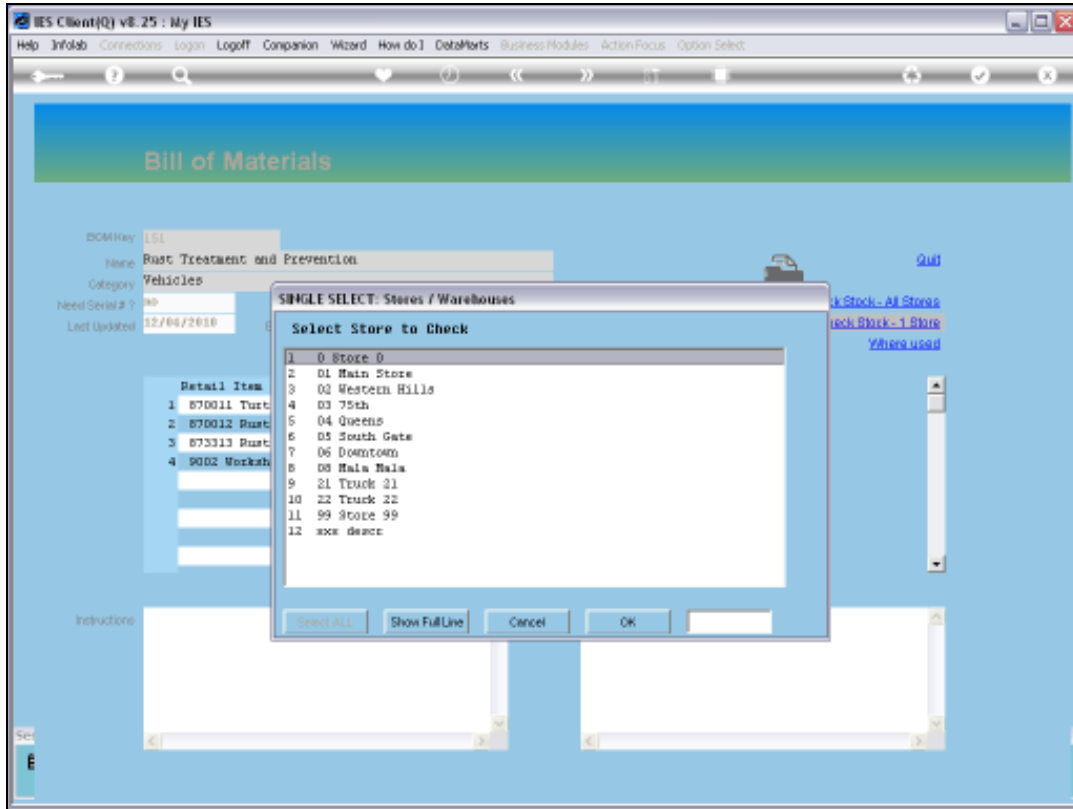


Slide 7

Slide notes: And we can also check the Stock position for any selected Store.



Slide 8
Slide notes:



Slide 9

Slide notes:

IES Client[0] v8.25 : My IES

Help Subst Quit Functions Commands

Bill of Materials: Stock Sheet

BOM Key: 151
BOM Name: Rust Treatment and Prevention
Target Store: 01 Main Store

| >>> | Stock Code | Description | Required | On Hand | Available | Short |
|-----|------------|---------------------------|----------|---------|-----------|-------|
| 1 | 870011 | Turtle Wax | 1.00 | 55.00 | 55.00 | 0.00 |
| 2 | 870012 | Rust-Oleum Metallic Spray | 1.00 | 81.00 | 81.00 | 0.00 |
| 3 | 873313 | Rust-Blast Rust Remover | 1.00 | 33.00 | 33.00 | 0.00 |

Slide 10

Slide notes:

IES Client[0] v8.25 : My IES

Help Submit Quit Functions Commands

Bill of Materials: Stock Sheet

BOM Key:

BOM Name:

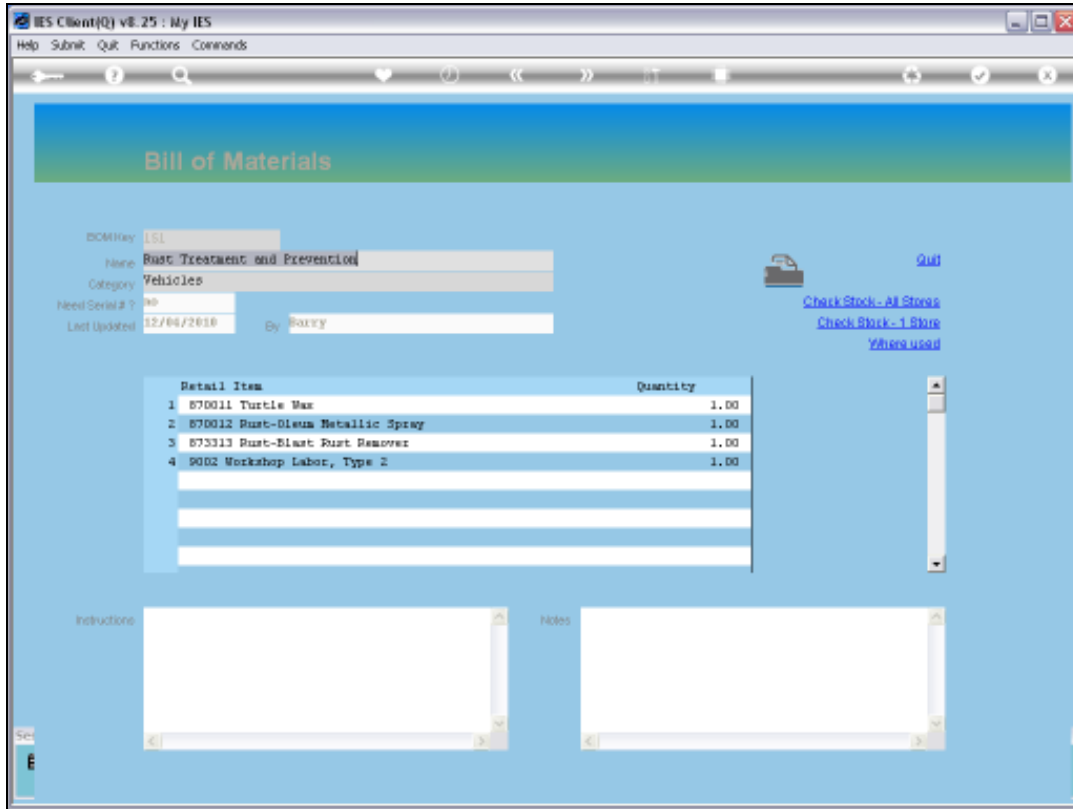
Target Store:

| >>> | Stock Code | Description | Required | On Hand | Available | Short |
|-----|------------|---------------------------|----------|---------|-----------|-------|
| 1 | 870011 | Turtle Wax | 1.00 | 55.00 | 55.00 | 0.00 |
| 2 | 870012 | Rust-Oleum Metallic Spray | 1.00 | 81.00 | 81.00 | 0.00 |
| 3 | 873313 | Rust-Blast Rust Remover | 1.00 | 33.00 | 33.00 | 0.00 |
| | | | | | | |
| | | | | | | |
| | | | | | | |
| | | | | | | |
| | | | | | | |
| | | | | | | |
| | | | | | | |
| | | | | | | |
| | | | | | | |
| | | | | | | |

Sc [Esc] Del

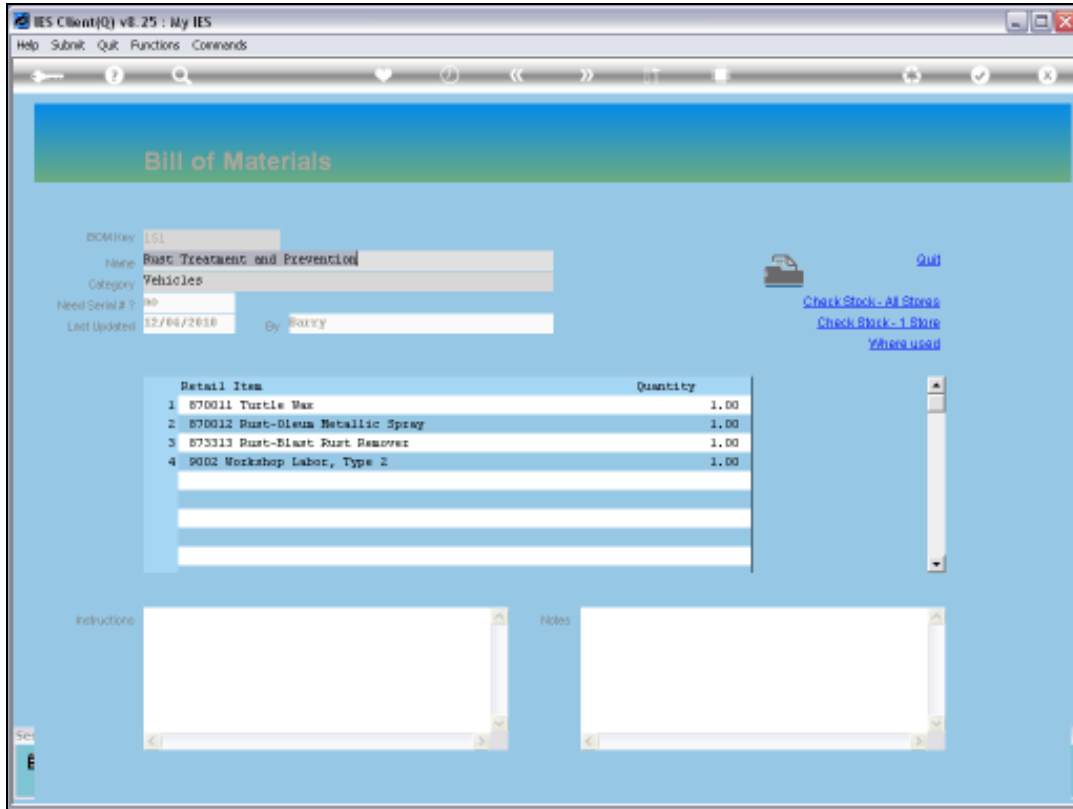
E

Slide 11
 Slide notes:



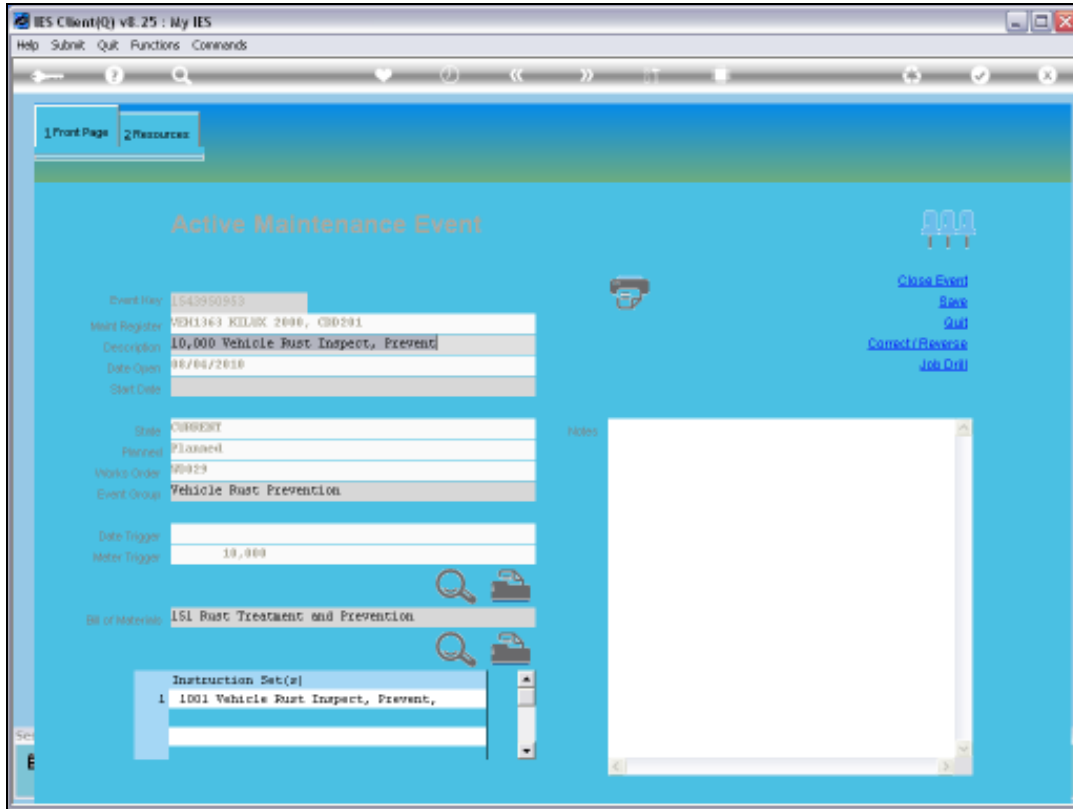
Slide 12

Slide notes:



Slide 13

Slide notes:



Slide 14

Slide notes:

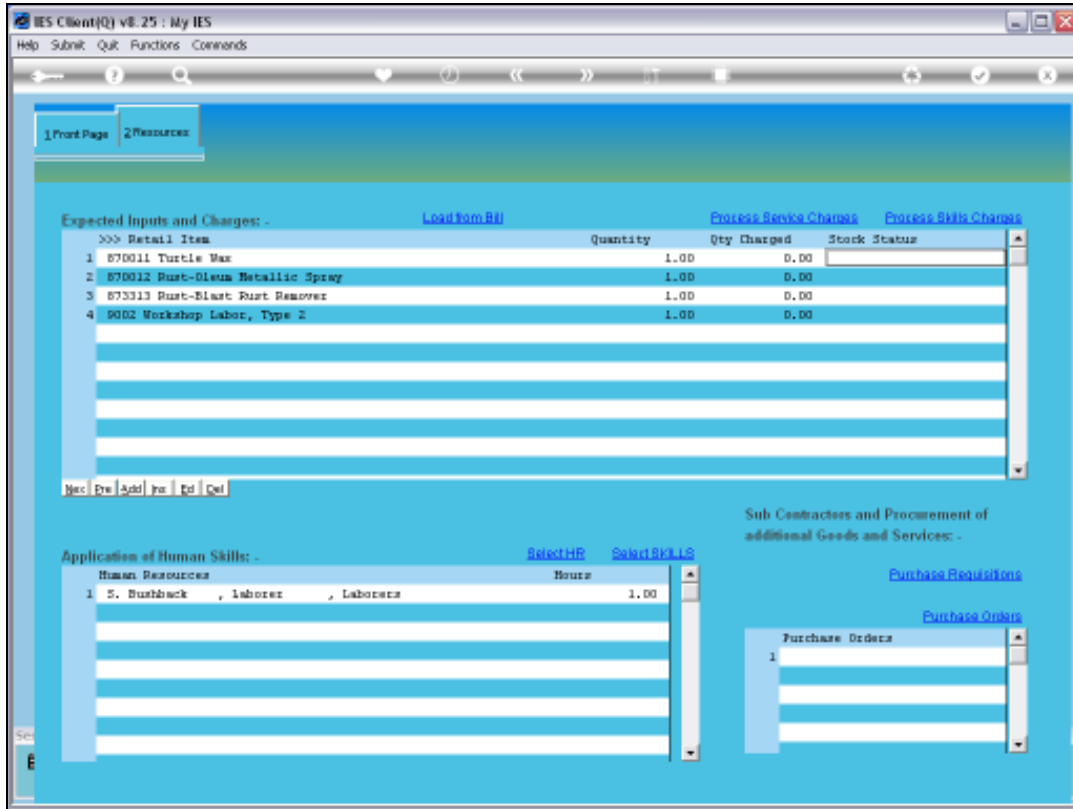
The screenshot displays the IES Client v8.25 interface. The window title is "IES Client v8.25 : My IES". The menu bar includes "Help", "Submit", "Quit", "Functions", and "Comments". The interface has two tabs: "1 Front Page" and "2 Resources". The main content area is titled "Active Maintenance Event" and features a blue background. On the right side, there are three user icons and a list of actions: "Close Event", "Risk", "Quit", "Correct/Reverse", and "Job Done". The form fields are as follows:

| | |
|---------------------|---------------------------------------|
| Event No: | 1542950953 |
| Work Register: | MD1363 KELDEX 2498, CB0291 |
| Description: | 10,000 Vehicle Rust Inspect, Prevent |
| Date Open: | 18/04/2010 |
| Start Date: | |
| State: | CURRENT |
| Planned: | Planned |
| Work Order: | 20429 |
| Event Group: | Vehicle Rust Prevention |
| Date Trigger: | |
| Water Trigger: | 10,000 |
| Bill of Material: | ISI Rust Treatment and Prevention |
| Instruction Set(s): | 1 1001 Vehicle Rust Inspect, Prevent, |

There is a "Notes" field on the right side of the form, which is currently empty.

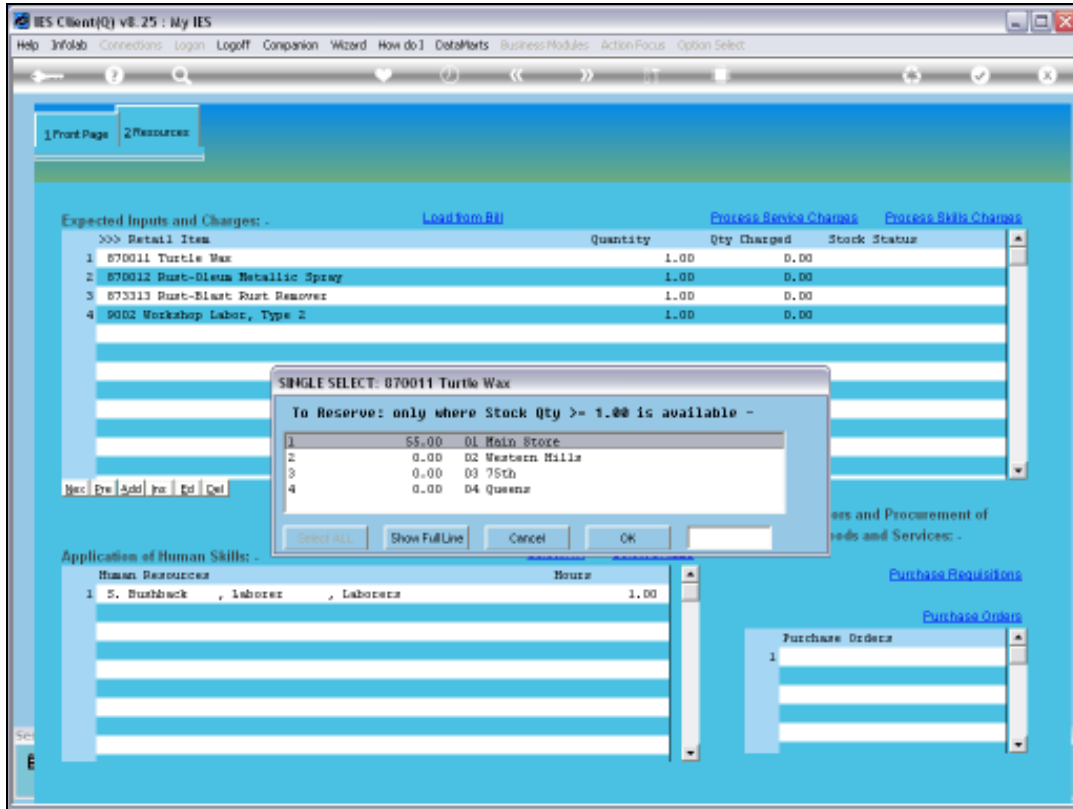
Slide 15

Slide notes: The actual Resources used for the Event will be on the Resources tab.



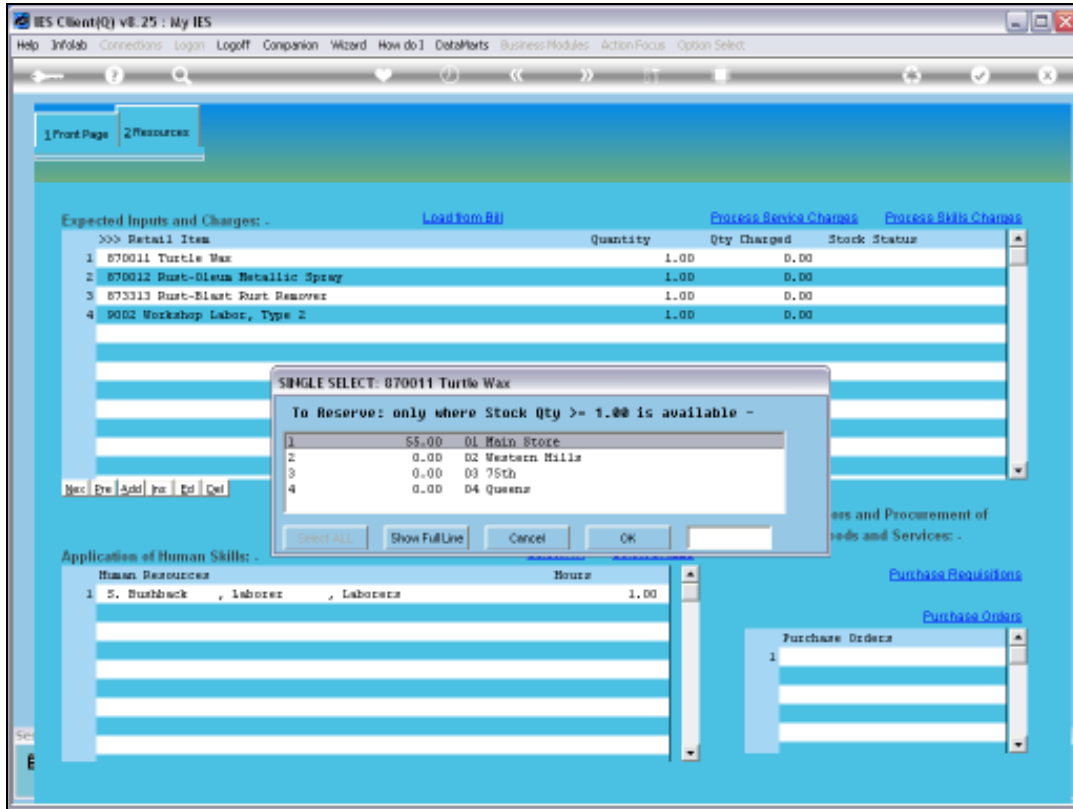
Slide 16

Slide notes: Here is where we can see which Stock Items have been loaded for use, and what the current status is, i.e. reserved or not reserved. We do not have to reserve Stock, but if there is a possibility that the Stock may be used by some other Customer or Process, then of course it is safer to reserve the Stock so that it will be available when we need it.

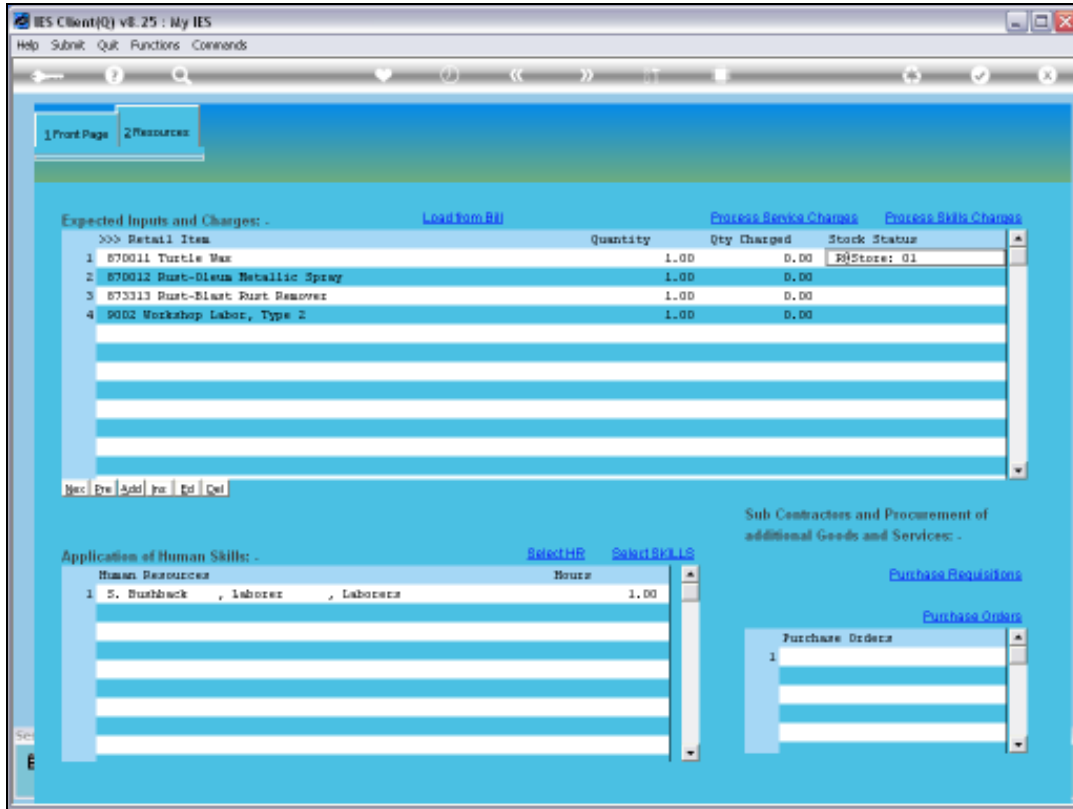


Slide 17

Slide notes: The Stock position is shown for qualifying Stores, and we can select to reserve it at the Store that is convenient AND that has the necessary Stock available.

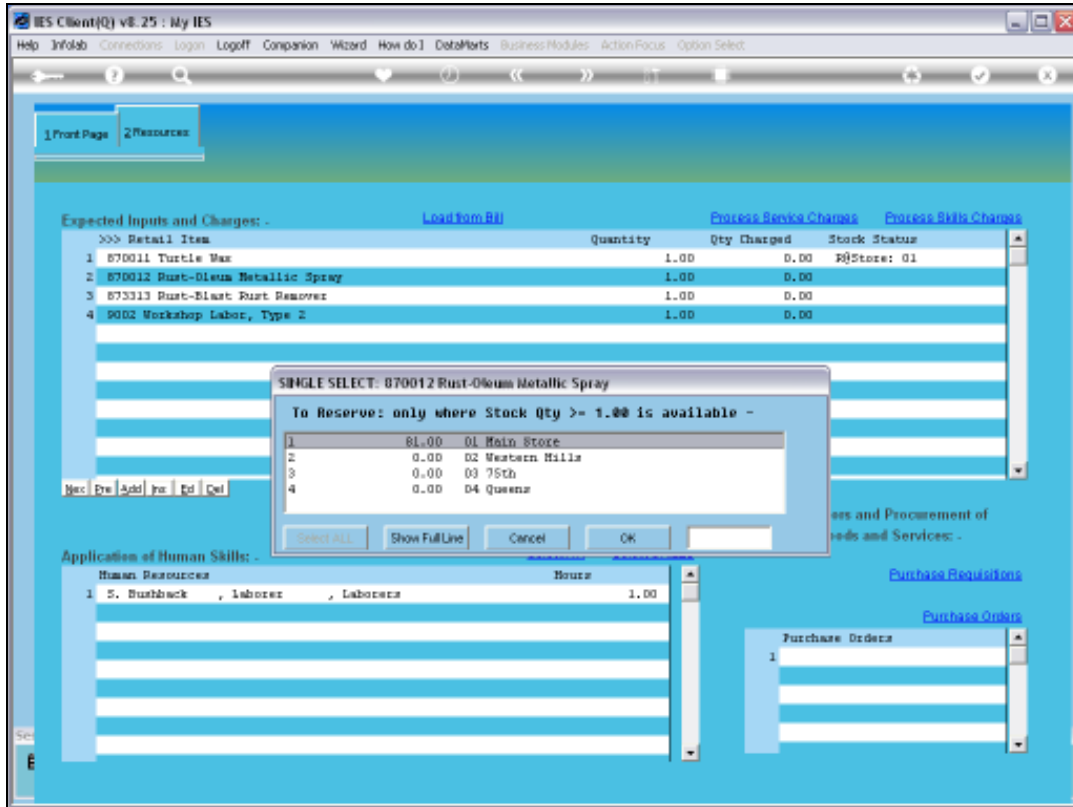


Slide 18
Slide notes:

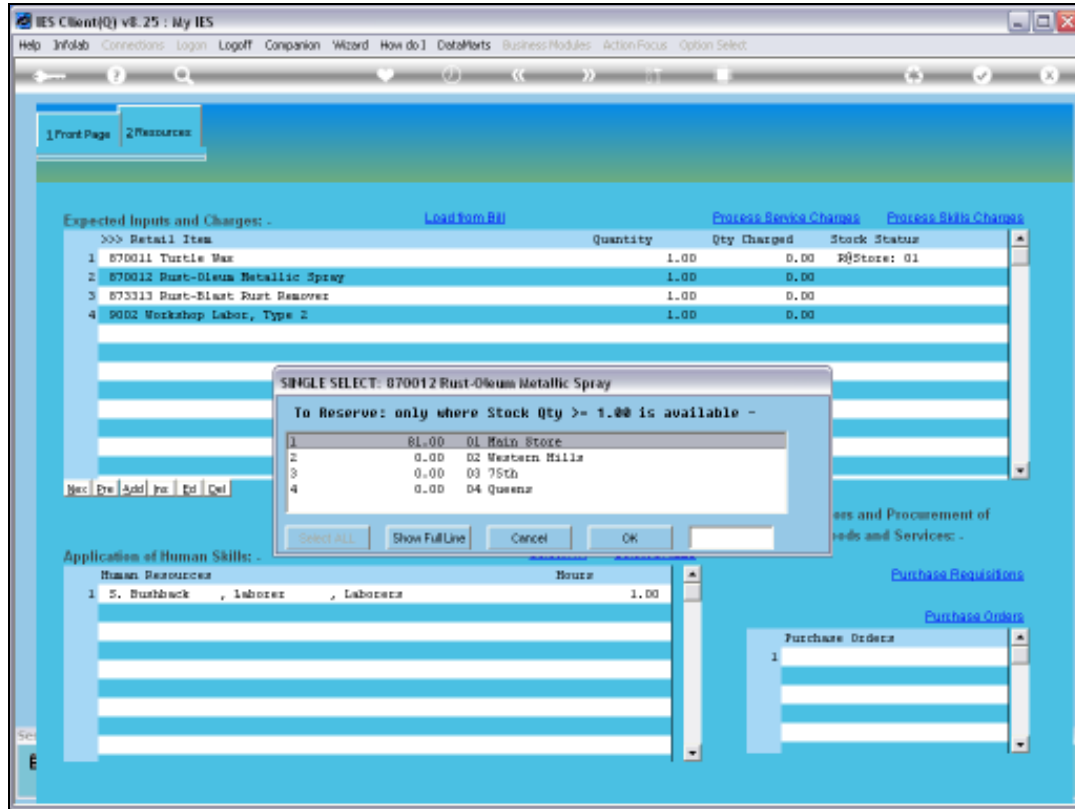


Slide 19

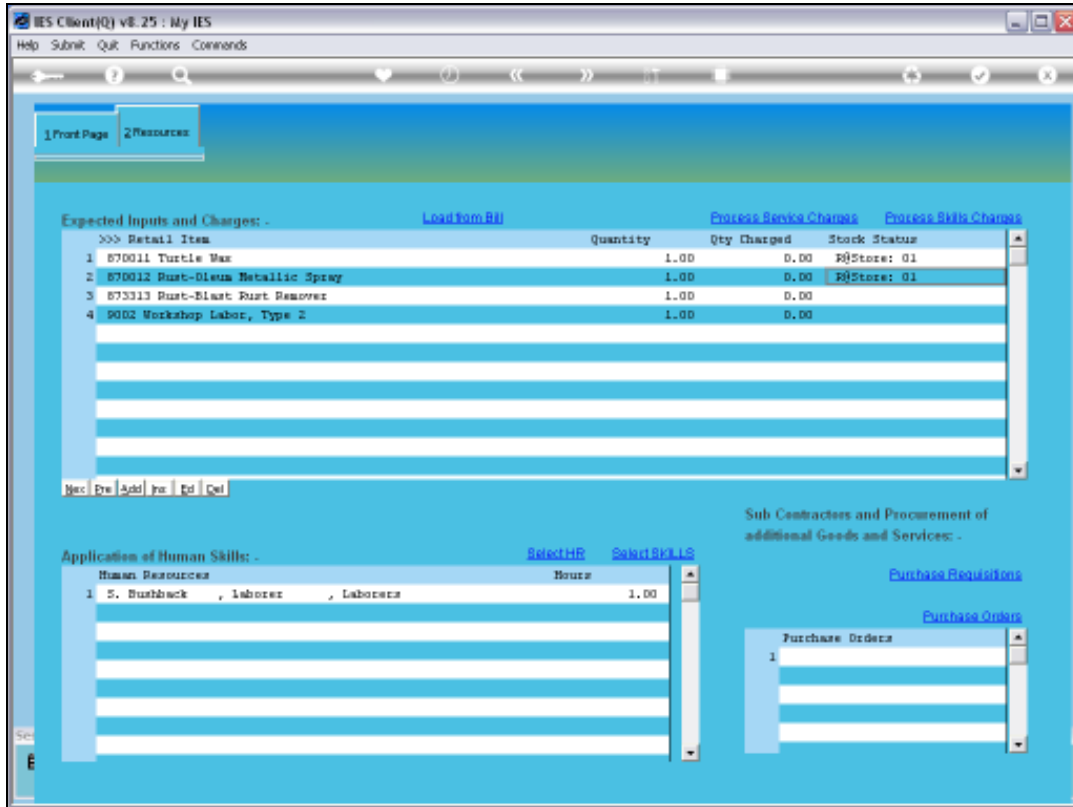
Slide notes: When Stock has been reserved for a Stock Item line, then the Store where it has been reserved is shown at the Stock status cell.



Slide 20
Slide notes:

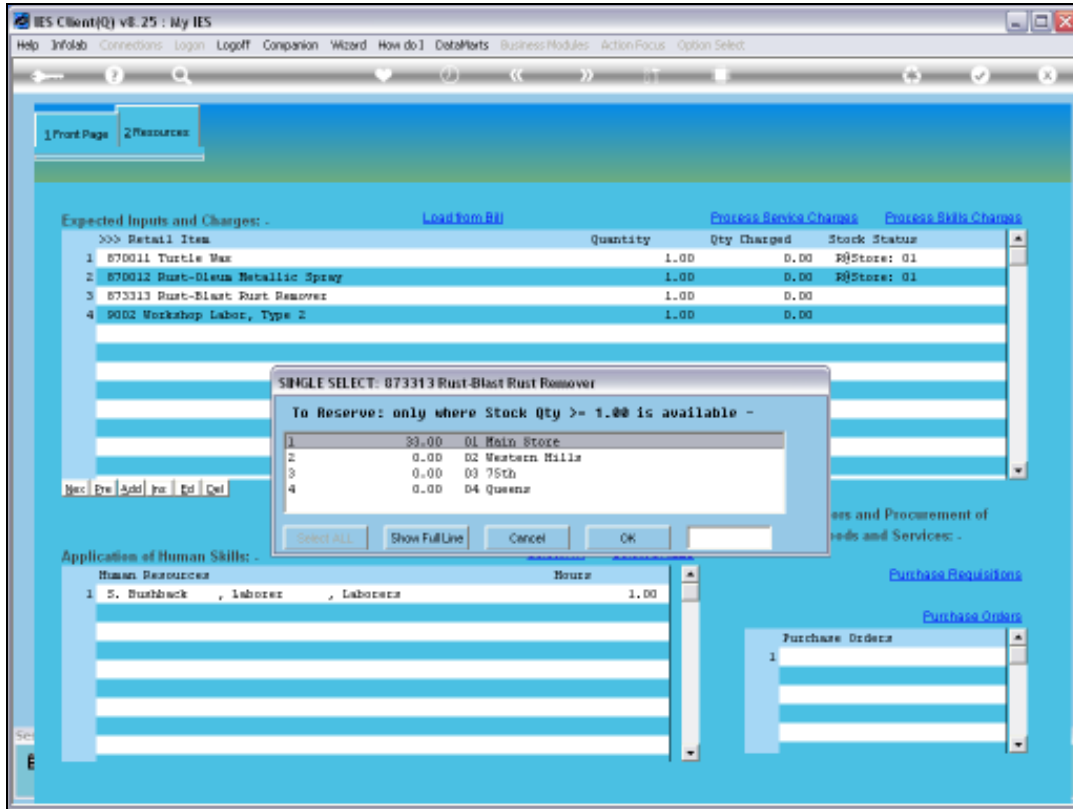


Slide 21
Slide notes:

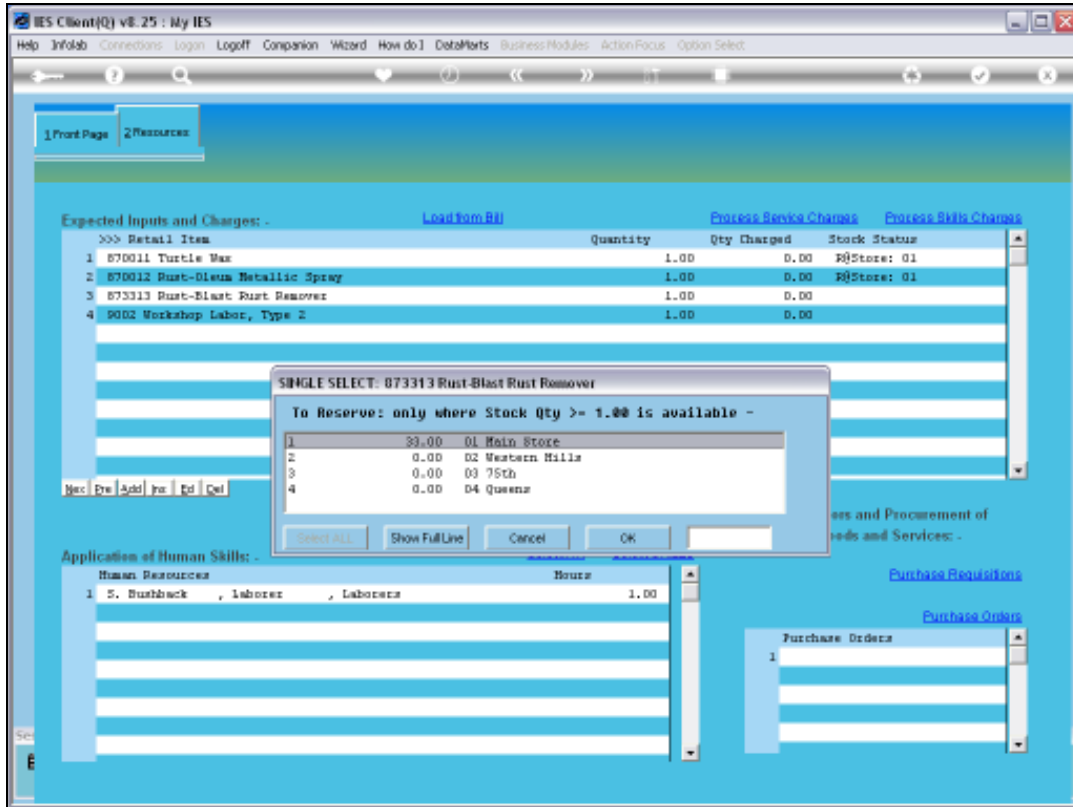


Slide 22

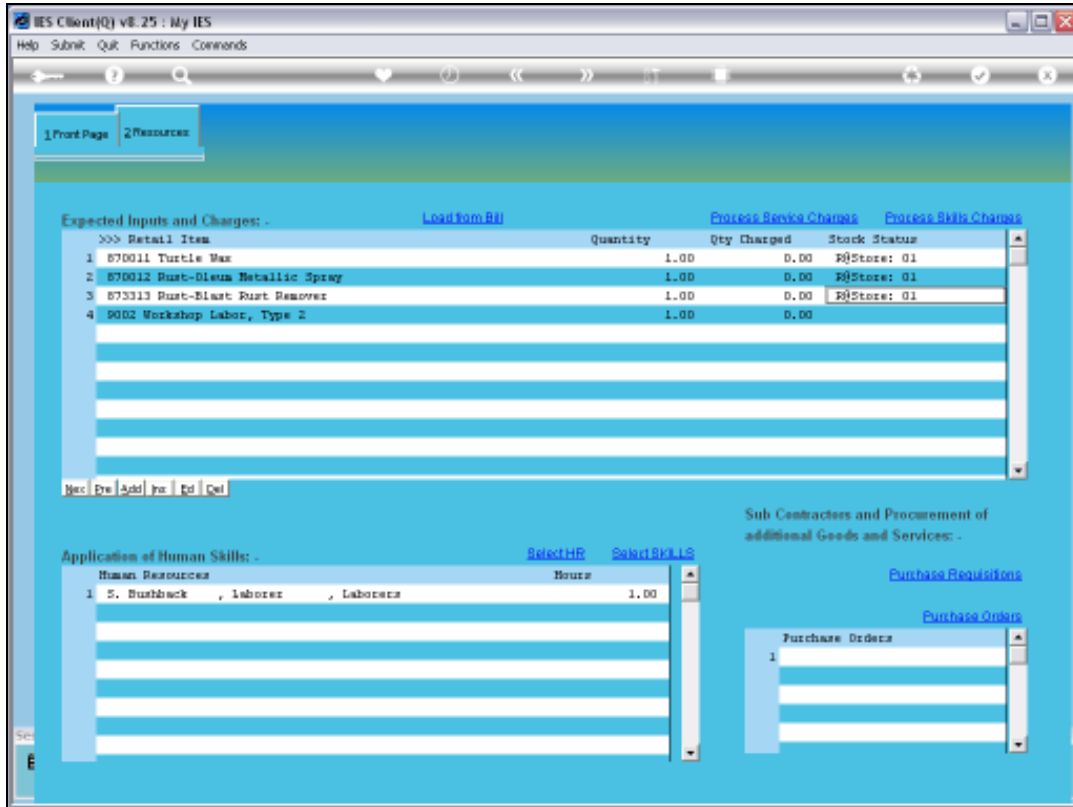
Slide notes: When we reserve Stock, we do it line by line.



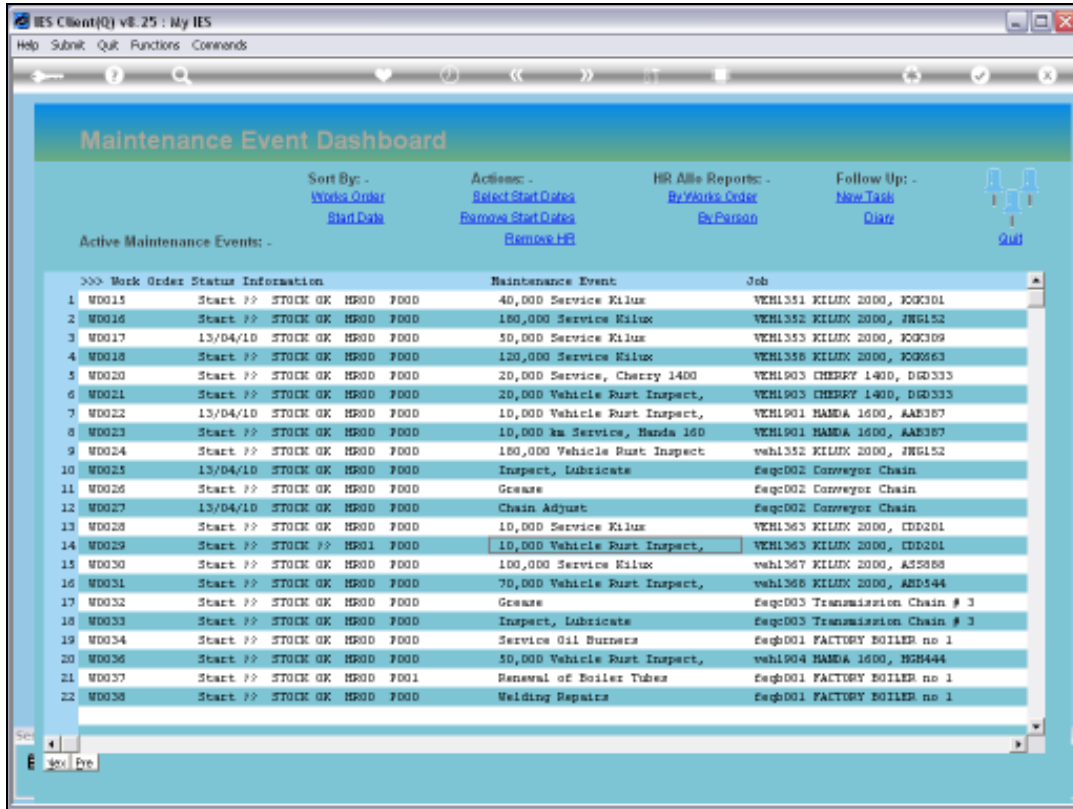
Slide 23
Slide notes:



Slide 24
Slide notes:



Slide 25
Slide notes:




Slide 26

Slide notes: At this point, we will now have a look at the options to Issue the Stock. The Maintenance Personnel will likely be using the Event Work Sheet, which has the Stock listing, and will withdraw the Stock Items as and when needed from the appropriate Store. That process does not happen at the Planned Maintenance Menu.

IES Client[Q] v8.25 : My IES

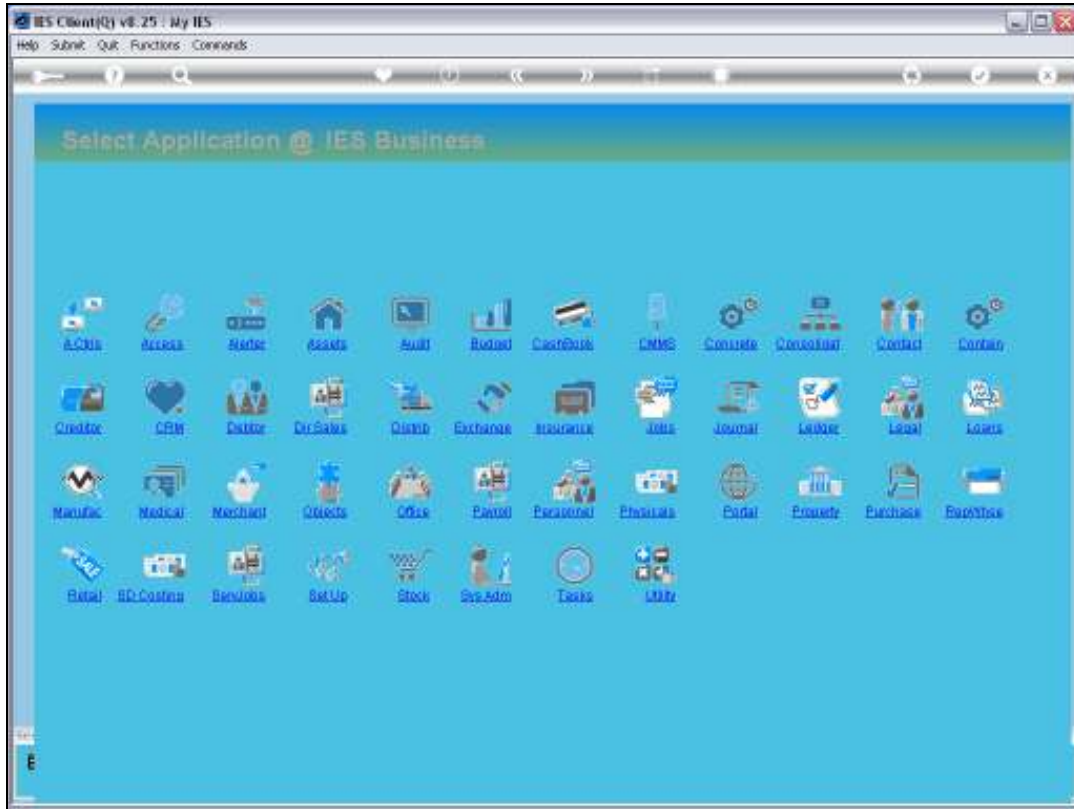
Help Submit Quit Functions Commands

Maintenance Event Dashboard

Sort By: - [Work Order](#) Actions: - [Select Start Dates](#) HR All Reports: - [By Work Order](#) Follow Up: - [New Task](#)
[Start Date](#) [Remove Start Dates](#) [By Person](#) [Date](#)  [Quit](#)
Active Maintenance Events: - [Remove HR](#)

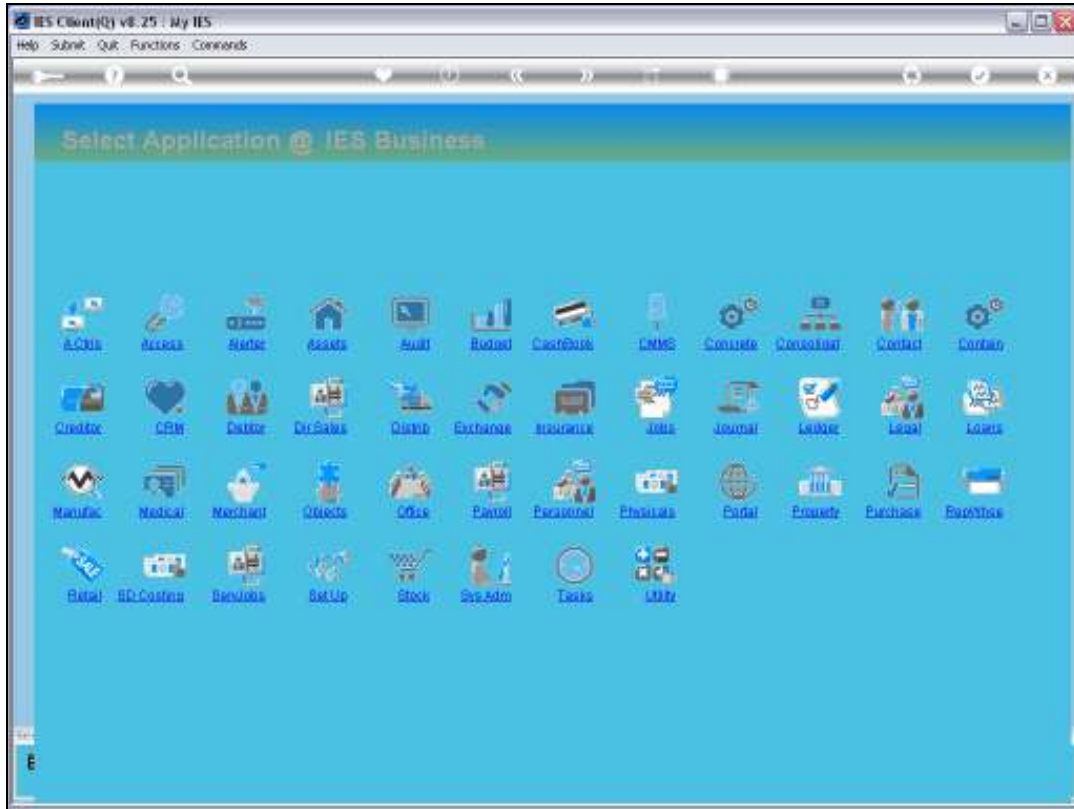
| >>> Work Order | Status | Information | Maintenance Event | Job |
|----------------|--------|------------------------------|------------------------------|-------------------------------|
| 1 | W0015 | Start ?? STOICE GK HP00 F000 | 40,000 Service Kilux | VEH1351 KILUX 2000, K0K301 |
| 2 | W0016 | Start ?? STOICE GK HP00 F000 | 160,000 Service Kilux | VEH1352 KILUX 2000, JRG152 |
| 3 | W0017 | 13/04/10 STOICE GK HP00 F000 | 50,000 Service Kilux | VEH1353 KILUX 2000, K0K309 |
| 4 | W0018 | Start ?? STOICE GK HP00 F000 | 120,000 Service Kilux | VEH1356 KILUX 2000, K0M663 |
| 5 | W0020 | Start ?? STOICE GK HP00 F000 | 20,000 Service, Cherry 1400 | VEH1903 CHERRY 1400, DGD333 |
| 6 | W0021 | Start ?? STOICE GK HP00 F000 | 20,000 Vehicle Rust Inspect, | VEH1903 CHERRY 1400, DGD333 |
| 7 | W0022 | 13/04/10 STOICE GK HP00 F000 | 10,000 Vehicle Rust Inspect, | VEH1901 HANDA 1600, AAE387 |
| 8 | W0023 | Start ?? STOICE GK HP00 F000 | 10,000 km Service, Handa 160 | VEH1901 HANDA 1600, AAE387 |
| 9 | W0024 | Start ?? STOICE GK HP00 F000 | 160,000 Vehicle Rust Inspect | veh1352 KILUX 2000, JRG152 |
| 10 | W0025 | 13/04/10 STOICE GK HP00 F000 | Inspect, Lubricate | Seq002 Conveyor Chain |
| 11 | W0026 | Start ?? STOICE GK HP00 F000 | Grease | Seq002 Conveyor Chain |
| 12 | W0027 | 13/04/10 STOICE GK HP00 F000 | Chain Adjust | Seq002 Conveyor Chain |
| 13 | W0028 | Start ?? STOICE GK HP00 F000 | 10,000 Service Kilux | VEH1363 KILUX 2000, CDD201 |
| 14 | W0029 | Start ?? STOICE ?? HP01 F000 | 10,000 Vehicle Rust Inspect, | VEH1363 KILUX 2000, CDD201 |
| 15 | W0030 | Start ?? STOICE GK HP00 F000 | 100,000 Service Kilux | veh1367 KILUX 2000, ASS088 |
| 16 | W0031 | Start ?? STOICE GK HP00 F000 | 70,000 Vehicle Rust Inspect, | veh1368 KILUX 2000, ABD444 |
| 17 | W0032 | Start ?? STOICE GK HP00 F000 | Grease | Seq003 Transmission Chain # 3 |
| 18 | W0033 | Start ?? STOICE GK HP00 F000 | Inspect, Lubricate | Seq003 Transmission Chain # 3 |
| 19 | W0034 | Start ?? STOICE GK HP00 F000 | Service Oil Burners | Seq001 FACTORY BOILER no 1 |
| 20 | W0036 | Start ?? STOICE GK HP00 F000 | 50,000 Vehicle Rust Inspect, | veh1904 HANDA 1600, H2H444 |
| 21 | W0037 | Start ?? STOICE GK HP00 F001 | Renewal of Boiler Tubes | Seq001 FACTORY BOILER no 1 |
| 22 | W0038 | Start ?? STOICE GK HP00 F000 | Welding Repairs | Seq001 FACTORY BOILER no 1 |

Slide 27
Slide notes:



Slide 28

Slide notes:



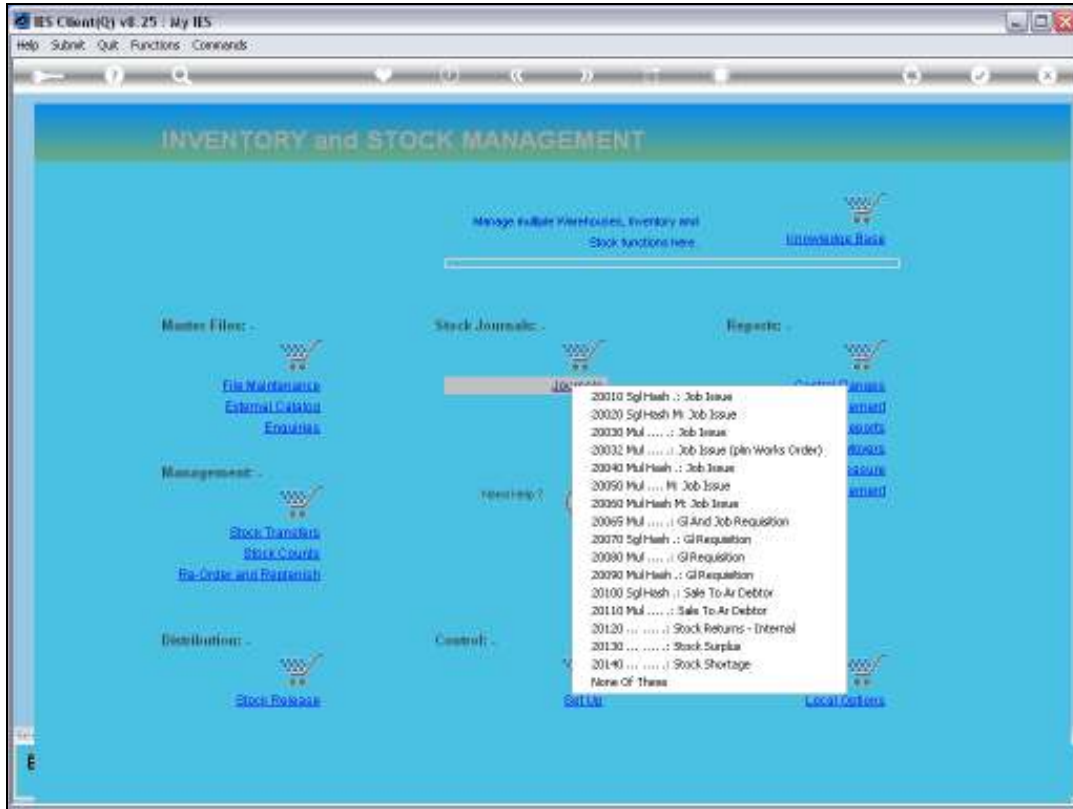
Slide 29

Slide notes:

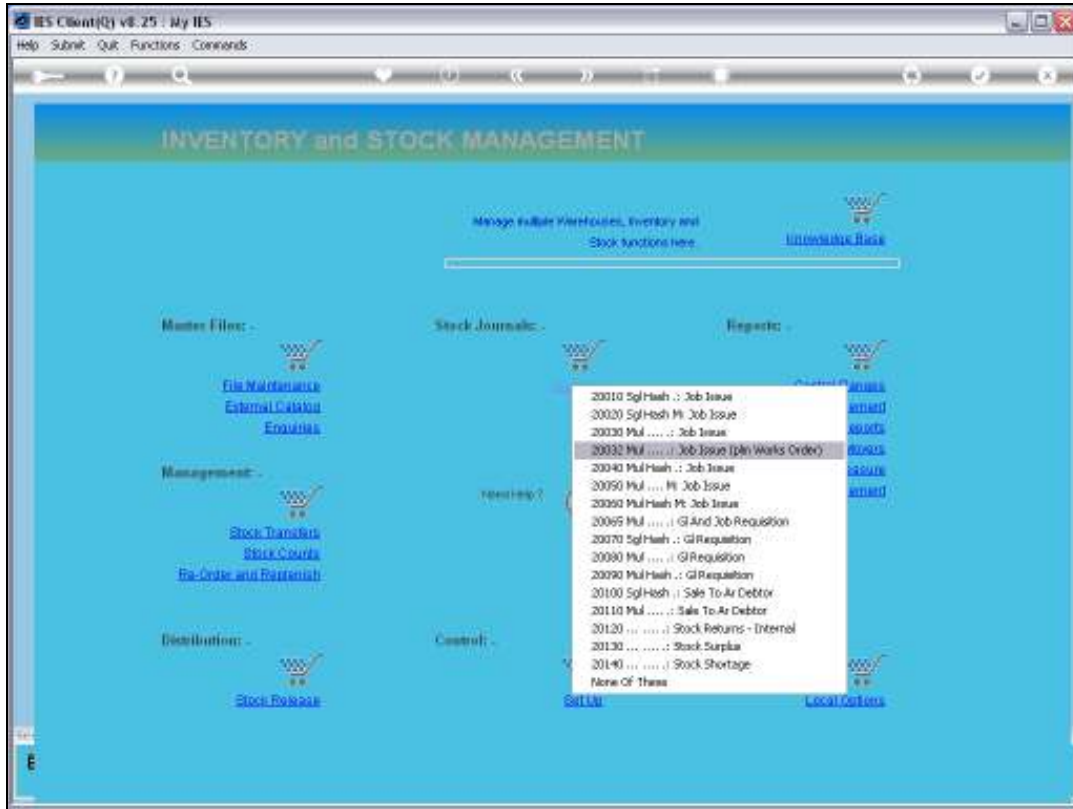


Slide 30

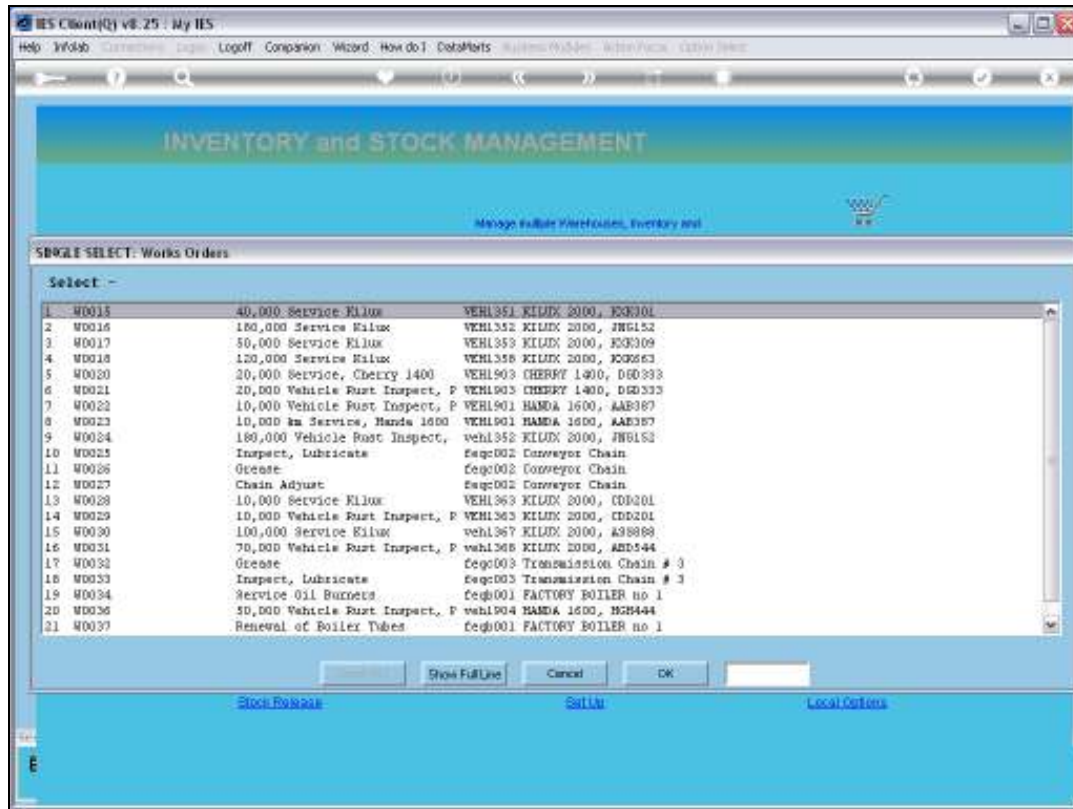
Slide notes: At the Stock system, we can use the "Journals" option to access the appropriate Journal for Planned Maintenance Issues.



Slide 31
Slide notes:



Slide 32
Slide notes:



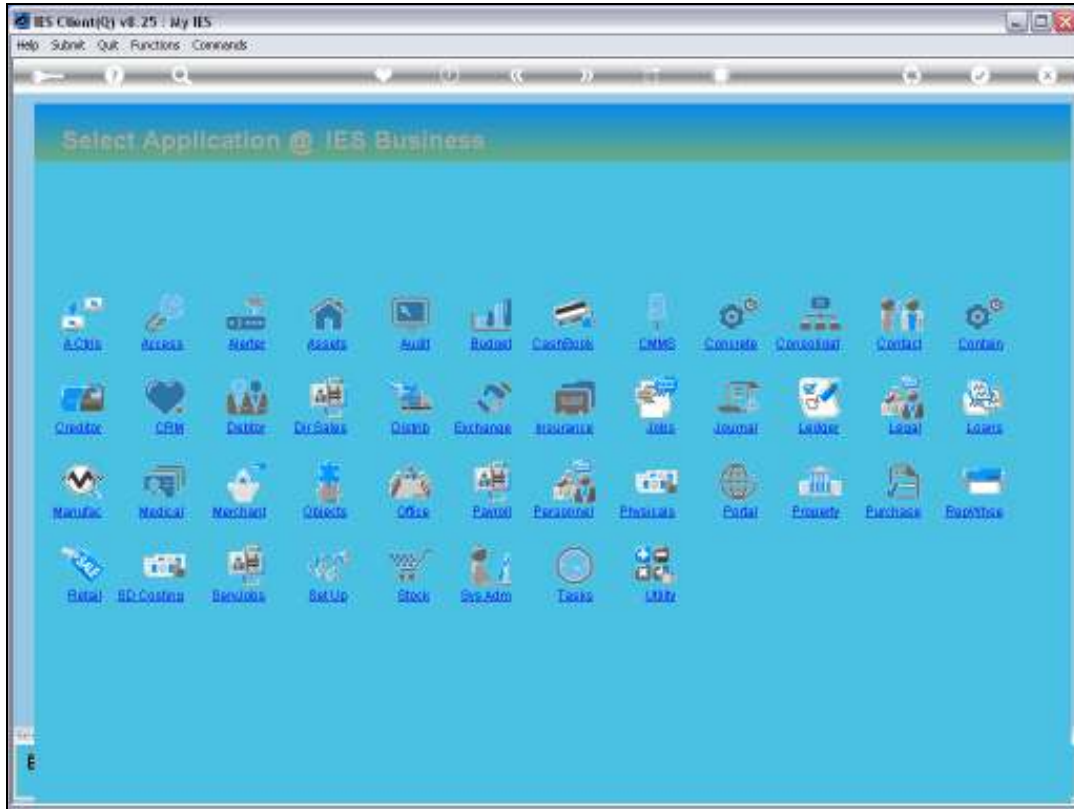
Slide 33

Slide notes: And this option will directly access the Active Dashboard, and offer the available Works Orders.



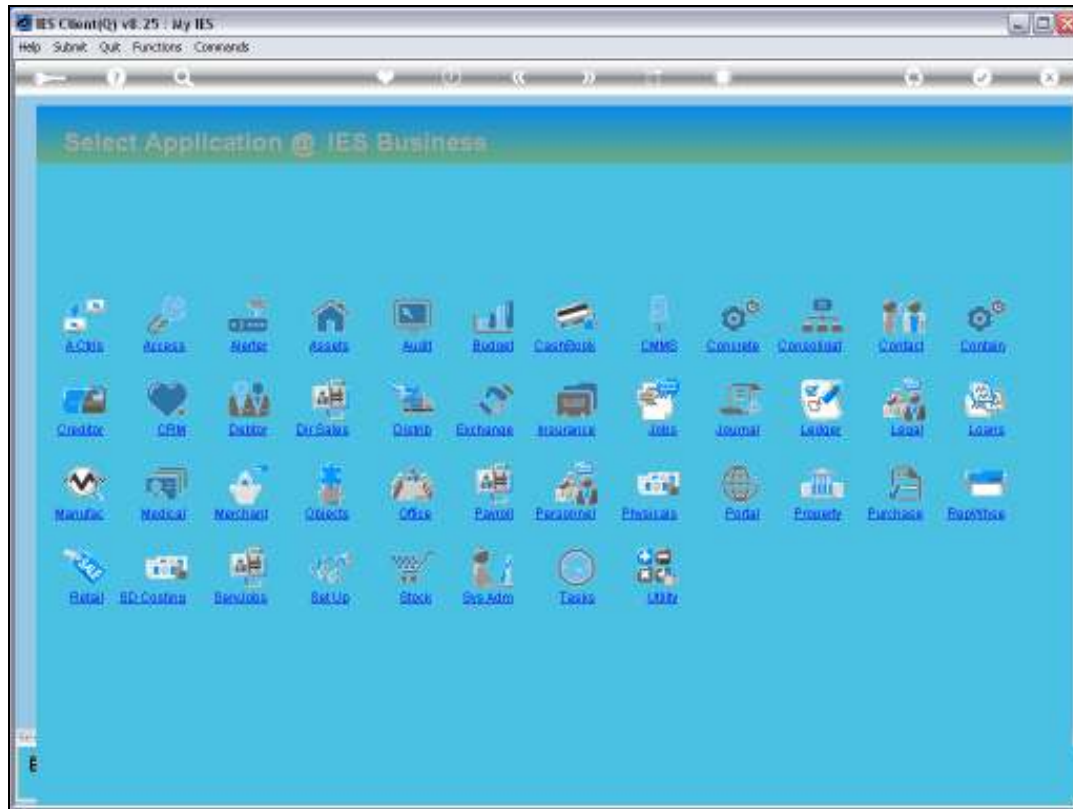
Slide 34

Slide notes:



Slide 35

Slide notes:



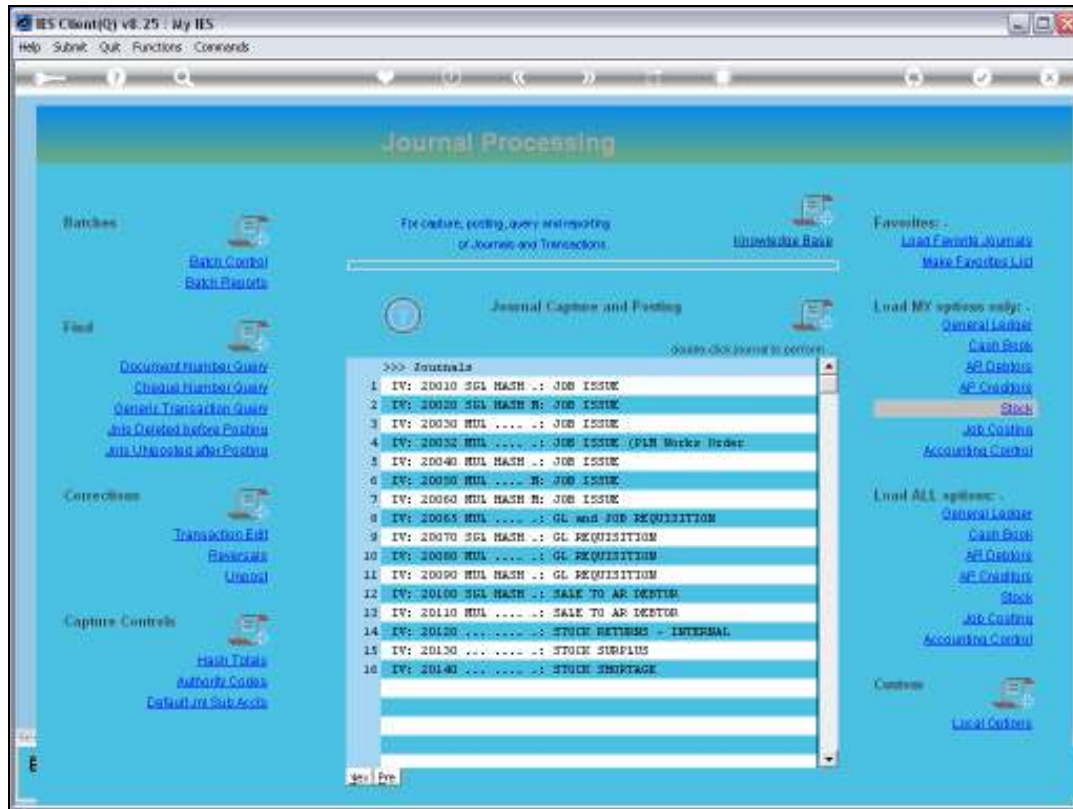
Slide 36

Slide notes: And there is another access point for the Maintenance Stock Issues, which we find at the Journal processing module.



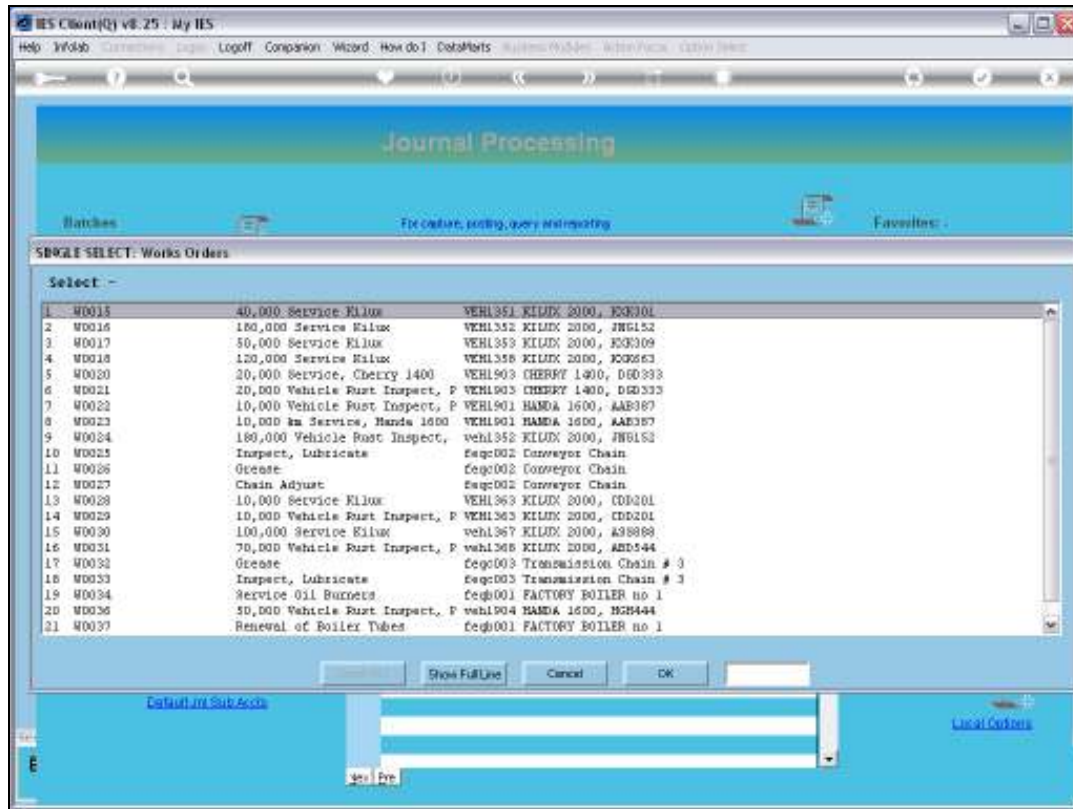
Slide 37

Slide notes: In this case, we will use the Stock Journal options.



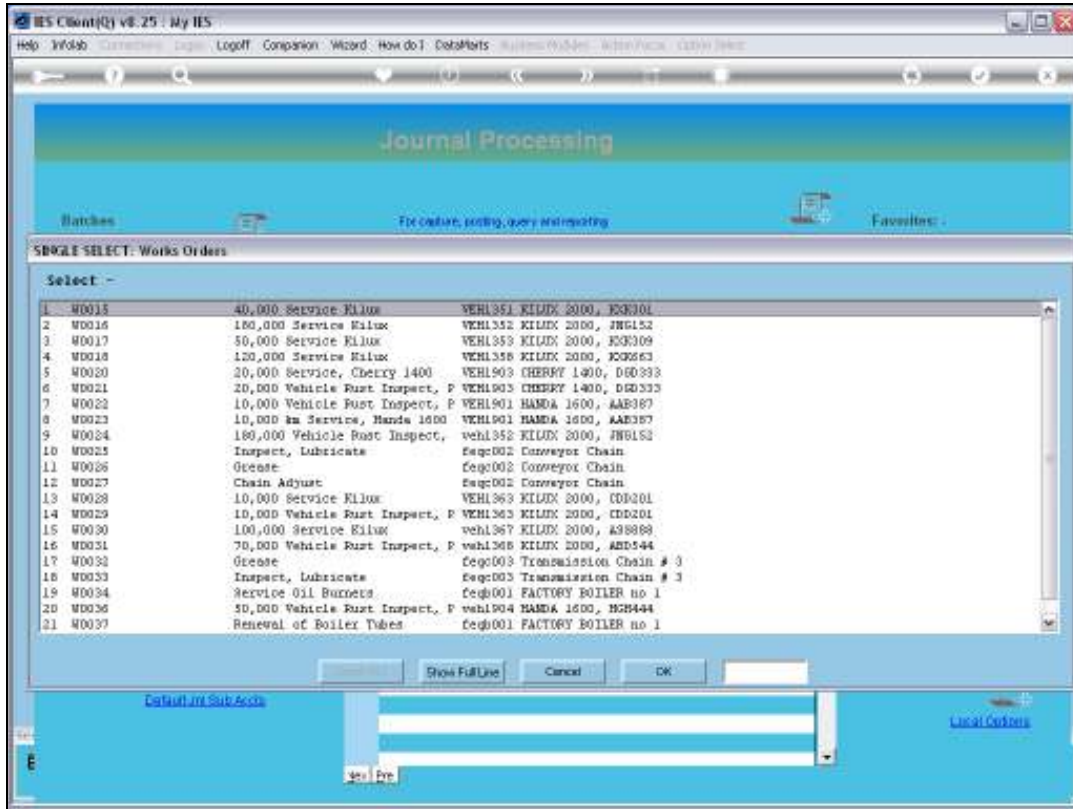
Slide 38

Slide notes: Of course, the correct Journal option is only available and shown if we have access to it.

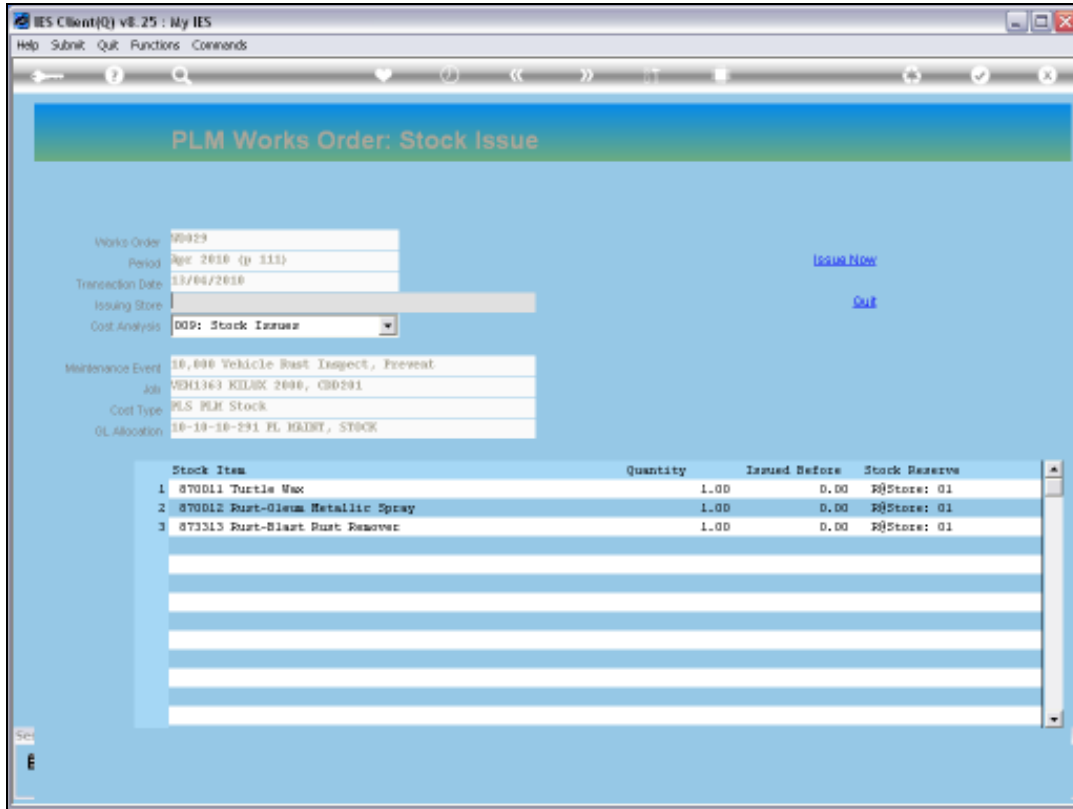


Slide 39

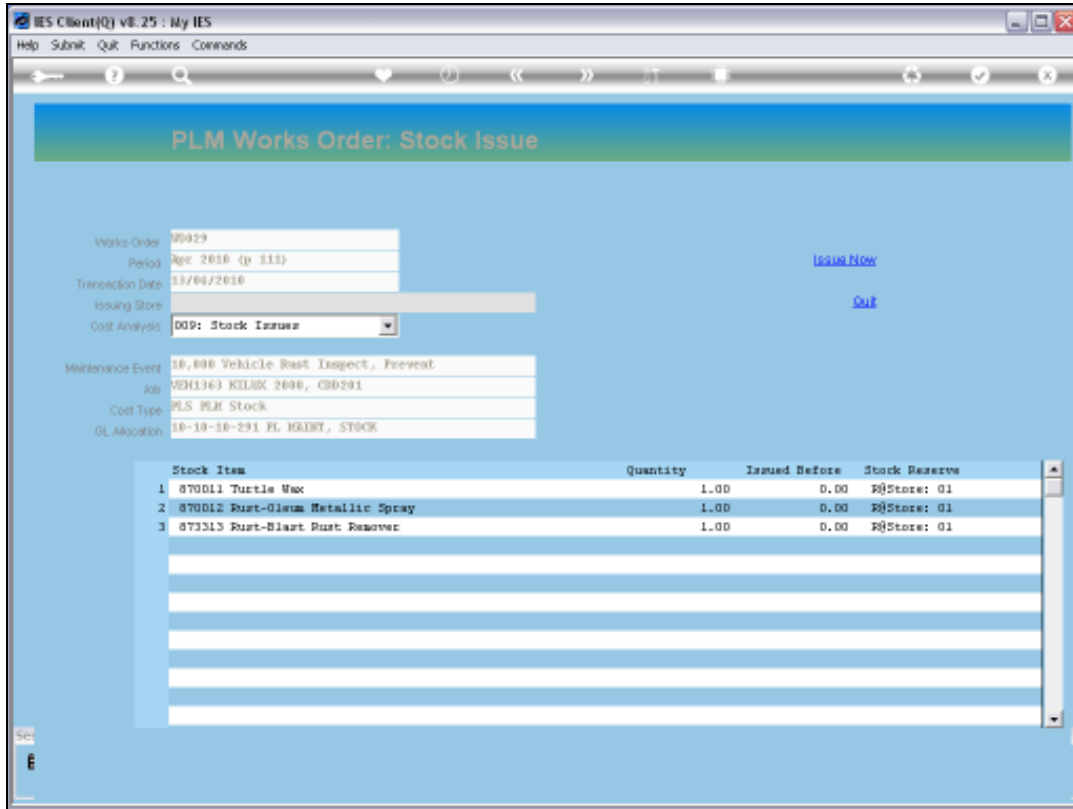
Slide notes: Once again, the system will offer all the current Works Orders, so that we can easily select the Works Order for which we, i.e. the Stores Operator, want to Issue some Stock.



Slide 40
Slide notes:

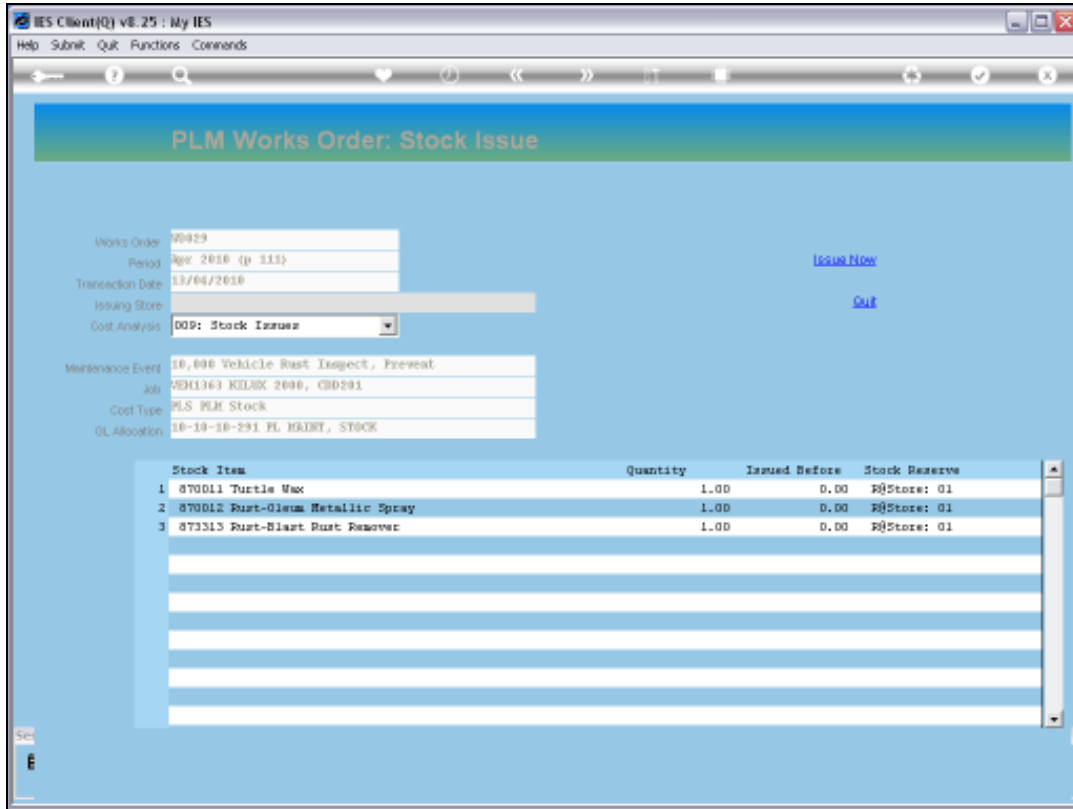


Slide 41
Slide notes:



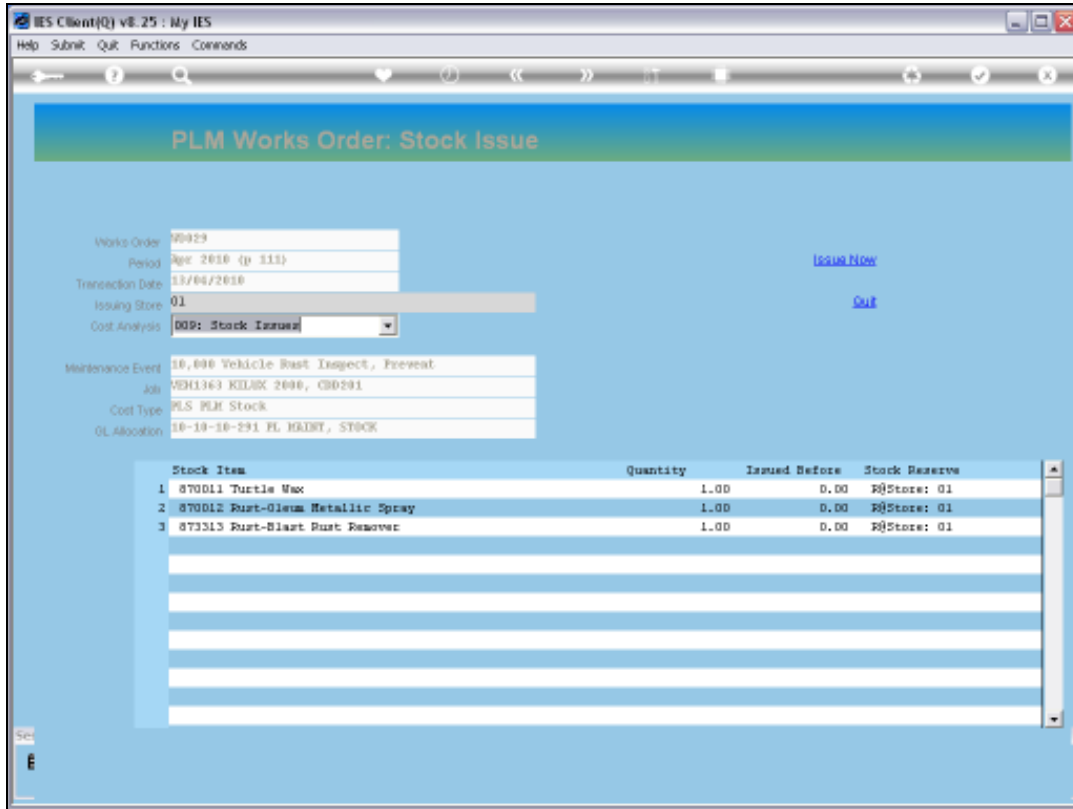
Slide 42

Slide notes: The system already knows the Stock status for the selected Works Order, and also indicates where any Stock have already been reserved.



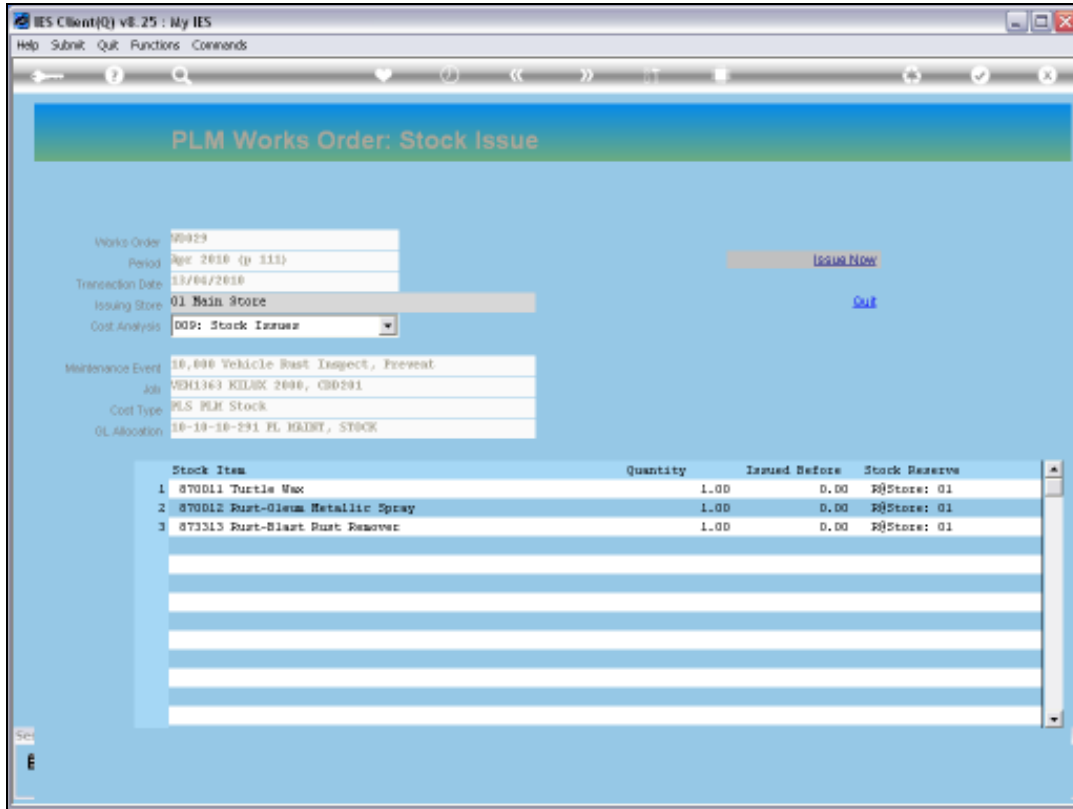
Slide 43

Slide notes: We will first indicate or confirm the Store from which we will be issuing the Stock, and then, if there are any Quantity changes then we may lower quantities for Stock that we will not issue right now. The most common procedure will be to simply confirm the Store and then choose "Issue Now" to complete the process, quick and easy.



Slide 44

Slide notes:



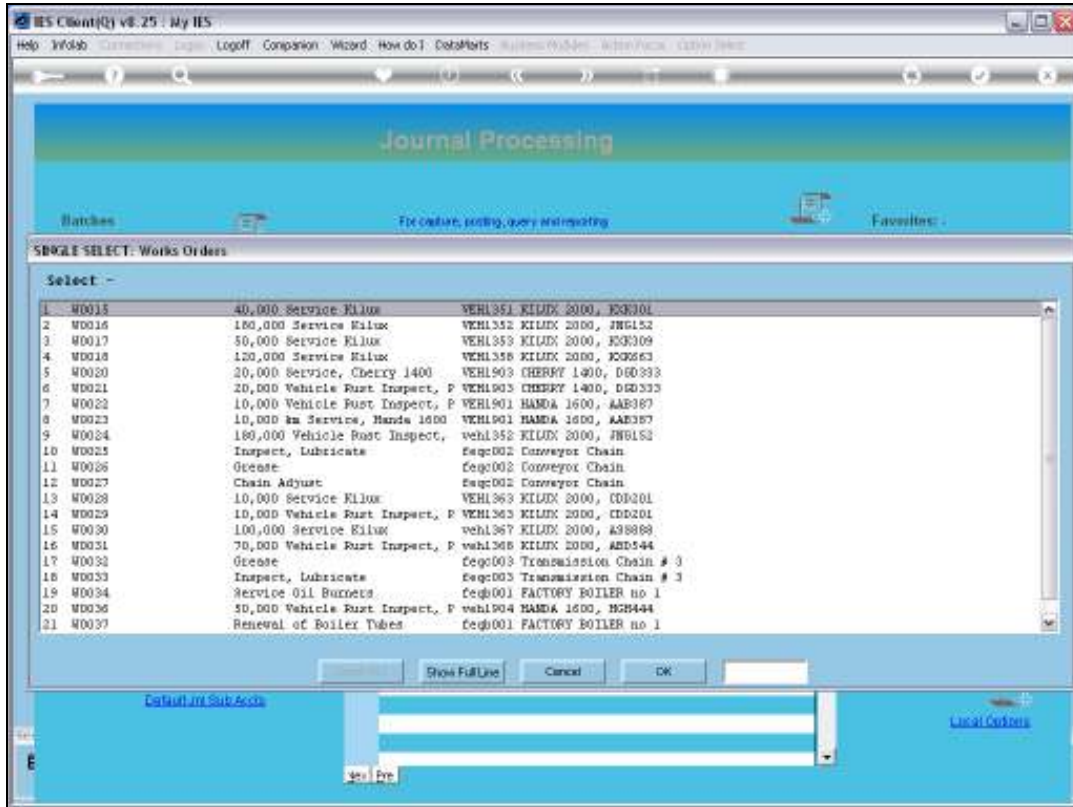
Slide 45

Slide notes:

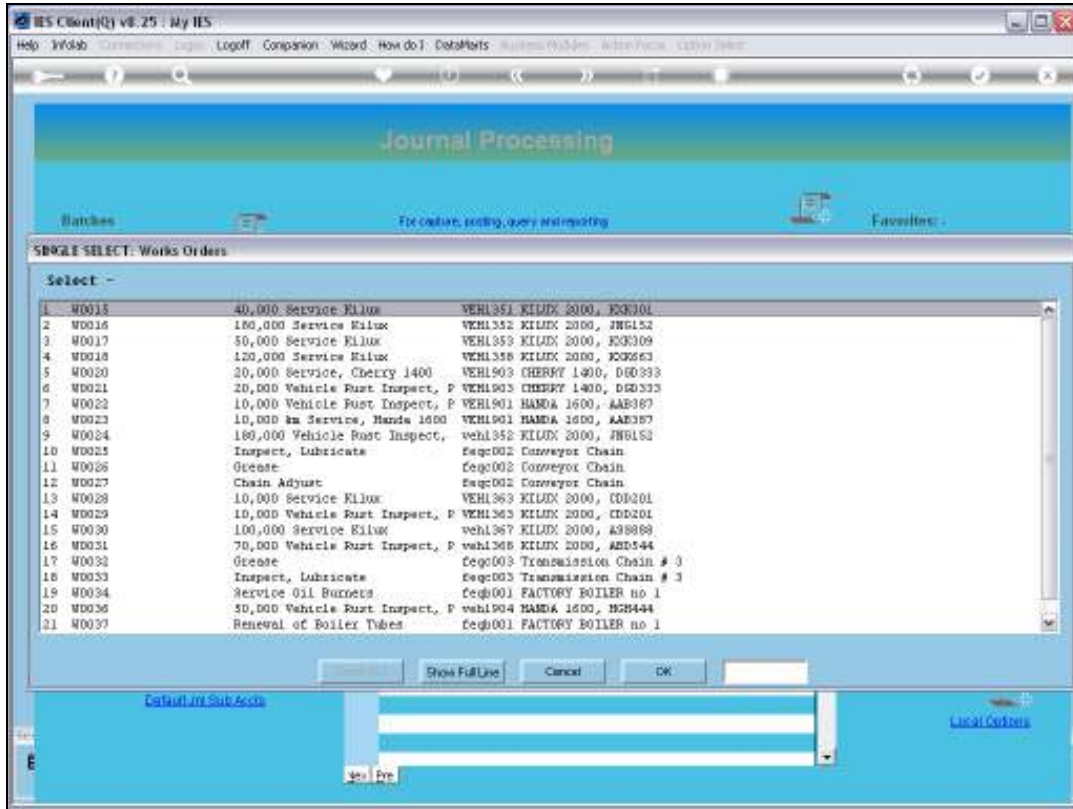


Slide 46

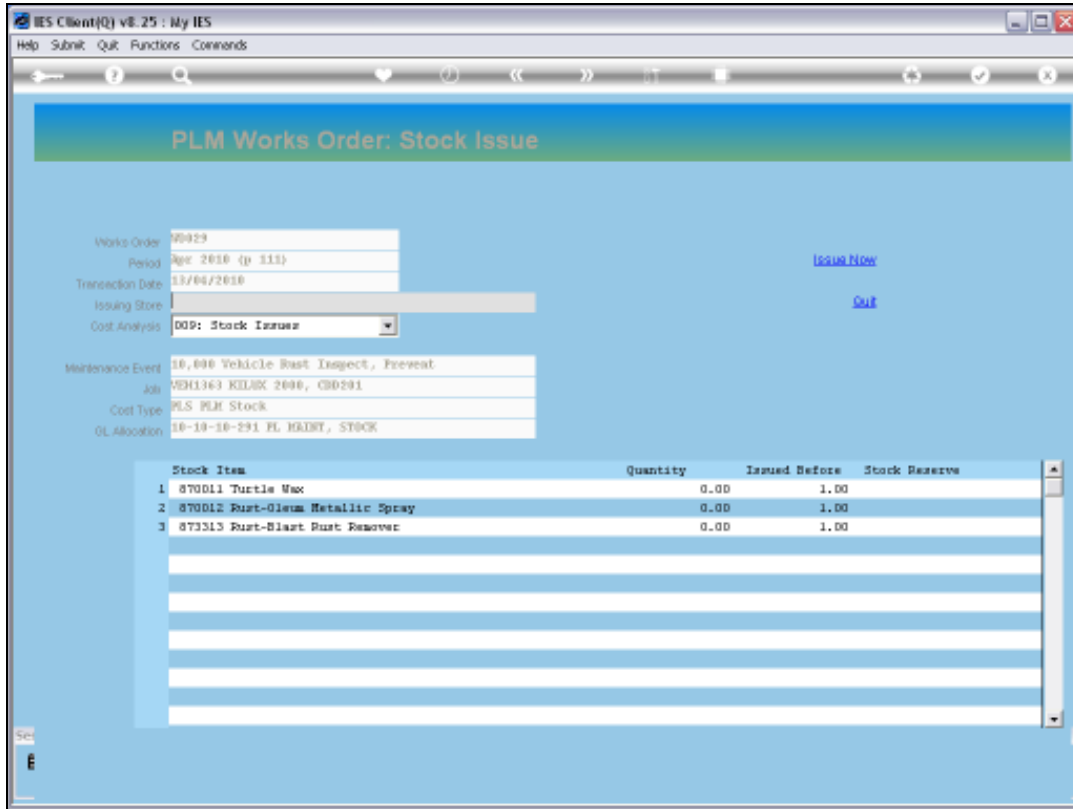
Slide notes: So the Stock Issue has been processed immediately, and we will return to the Works Order again just to show that it has indeed been done.



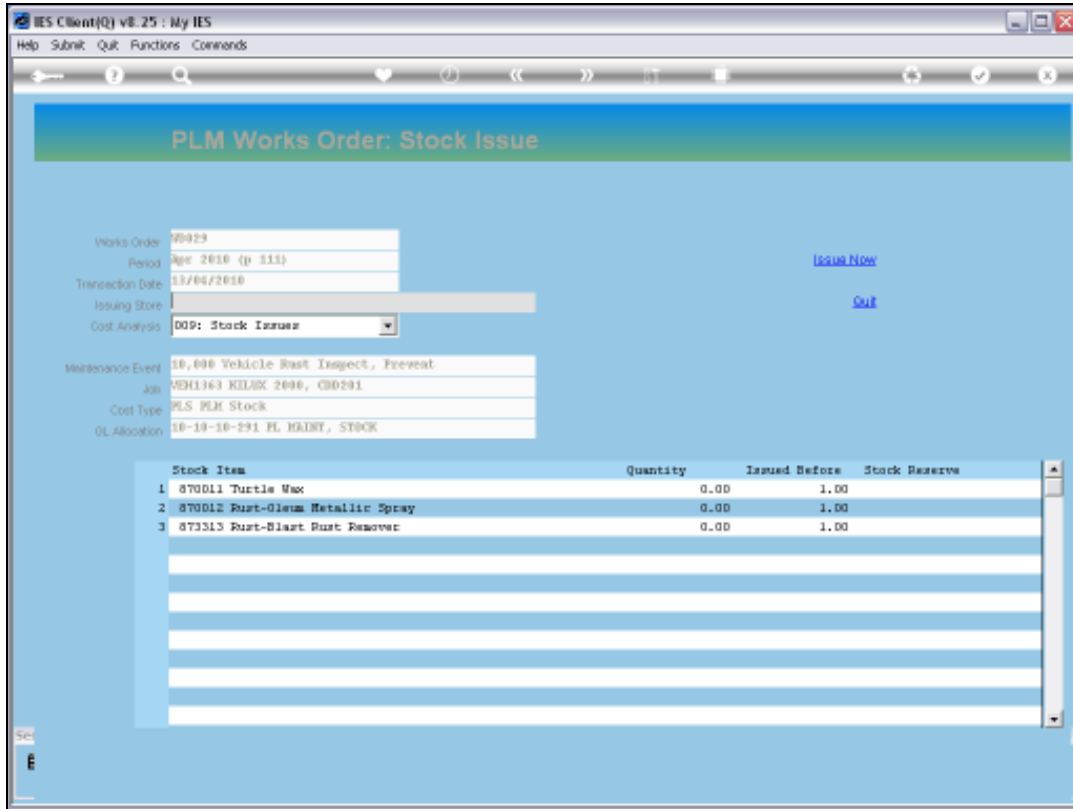
Slide 47
 Slide notes:



Slide 48
Slide notes:

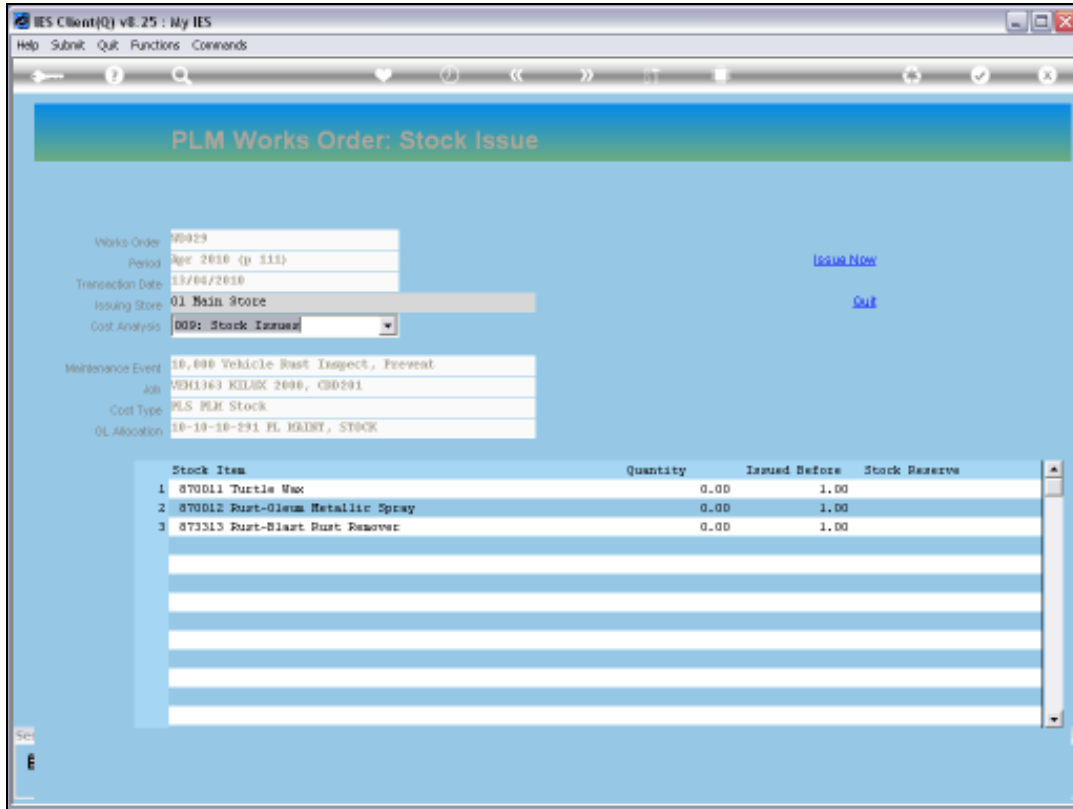


Slide 49
 Slide notes:



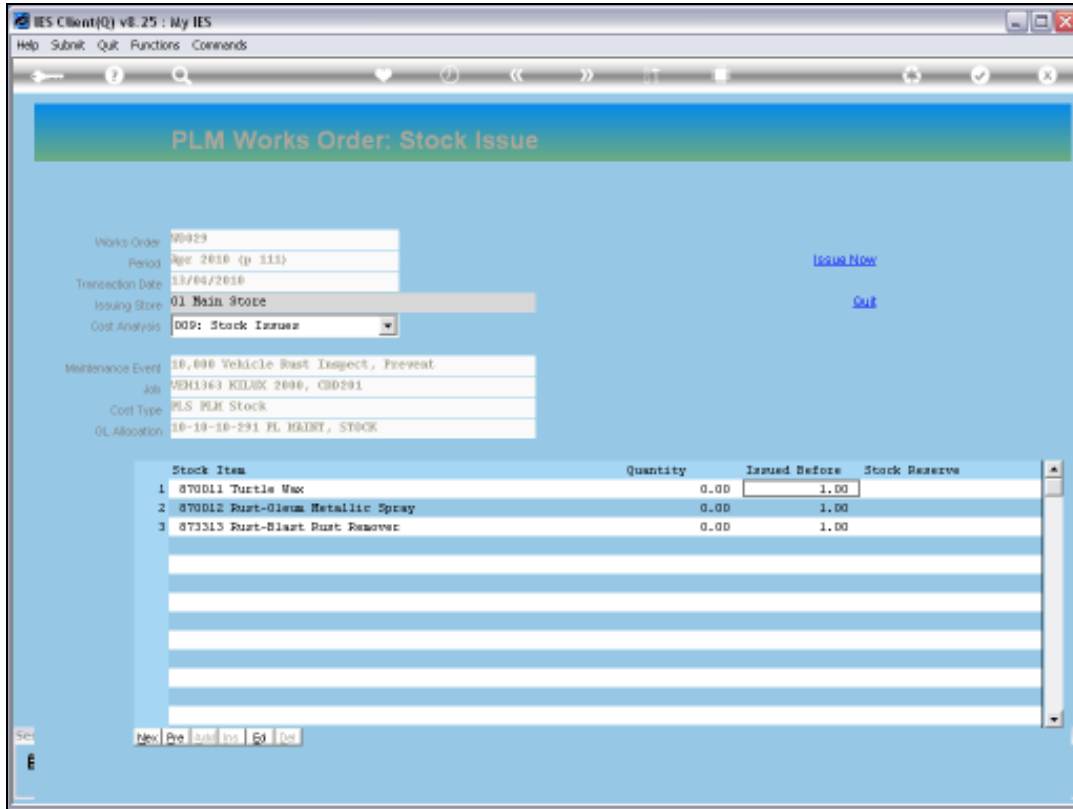
Slide 50

Slide notes:



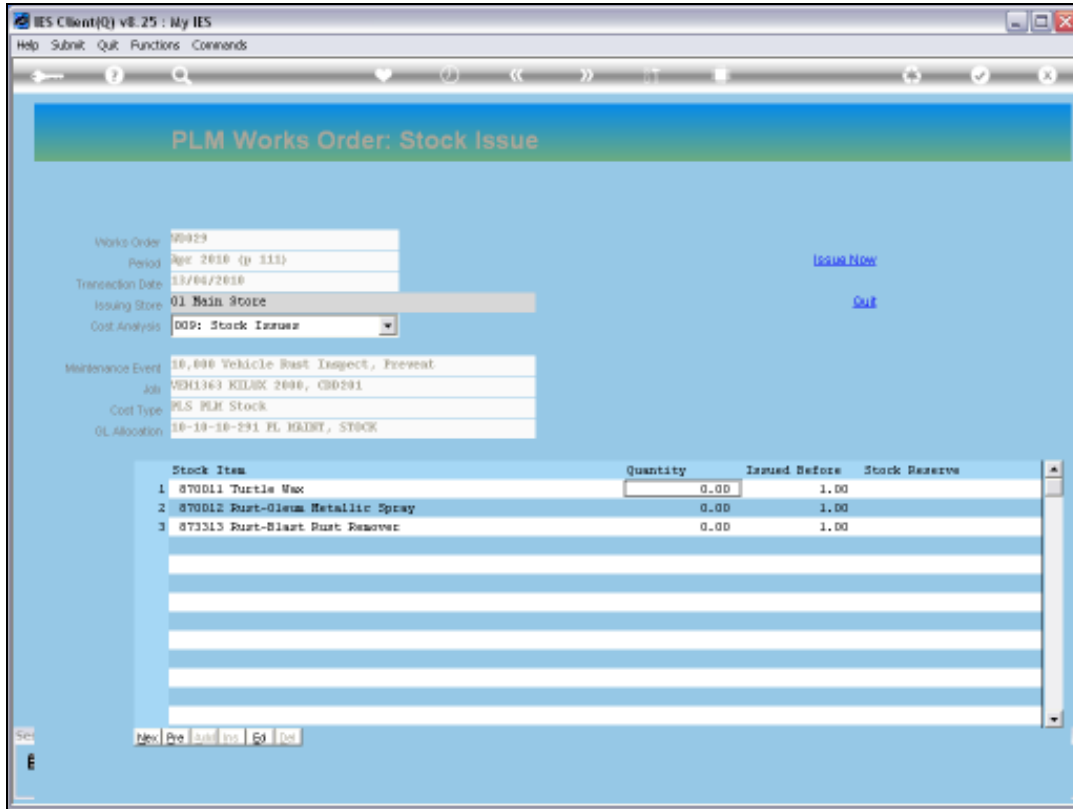
Slide 51

Slide notes: And as we can see, the system indicates that the Stock has already been issued, and according to the current status, no quantities remain to be issued, unless of course we add more items at the Works Order in Planned Maintenance, which is possible.



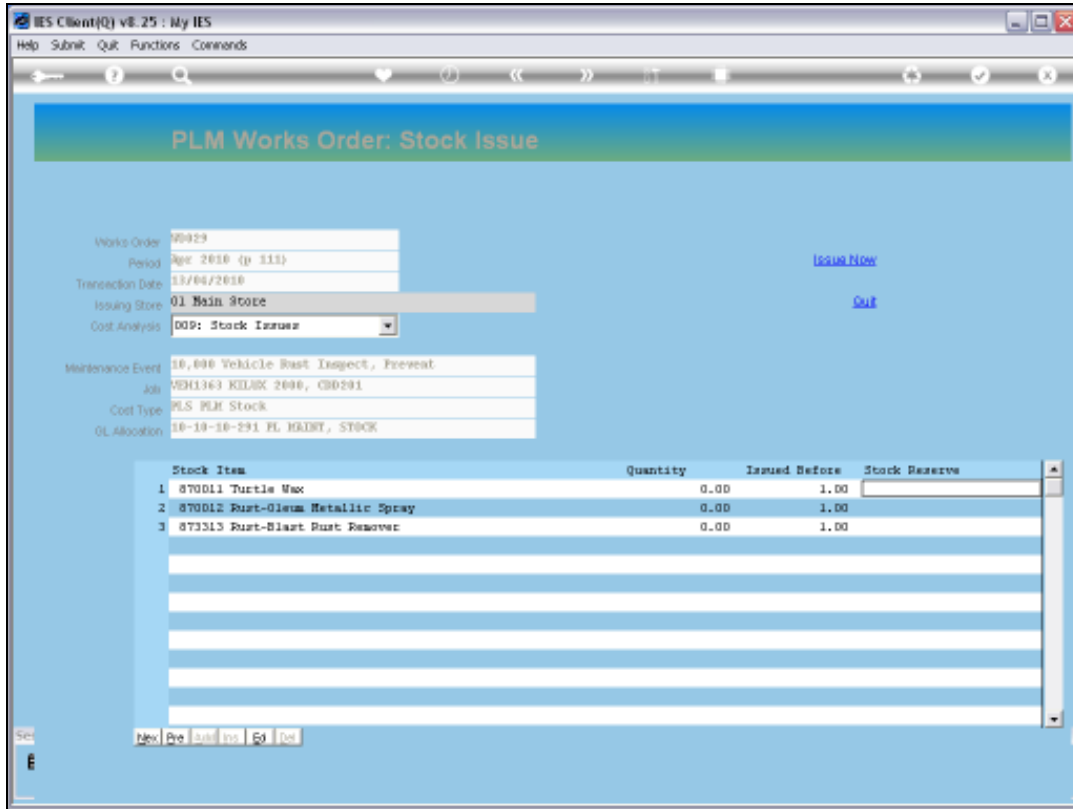
Slide 52

Slide notes:



Slide 53

Slide notes: And, as we can see, the prior indications of Reserved Stock have been removed.



Slide 54

Slide notes:



Slide 55
Slide notes:



Slide 56
Slide notes:

Maintenance Event Dashboard

Sort By: - [Work Order](#)
[Start Date](#)

Actions: - [Select Start Dates](#)
[Remove Start Dates](#)
[Remove HR](#)

HR All Reports: - [By Work Order](#)
[By Person](#)

Follow Up: - [New Task](#)
[Diary](#)

Active Maintenance Events: - [Quit](#)

| Work Order | Status | Info | Maintenance Event | Job |
|------------|----------|--------------------|------------------------------|-------------------------------|
| 1 | Start | STOCK GK HP00 F000 | 40,000 Service Kilux | VEH1351 KILUX 2000, K0K301 |
| 2 | Start | STOCK GK HP00 F000 | 160,000 Service Kilux | VEH1352 KILUX 2000, JRG152 |
| 3 | 13/04/10 | STOCK GK HP00 F000 | 50,000 Service Kilux | VEH1353 KILUX 2000, K0K309 |
| 4 | Start | STOCK GK HP00 F000 | 120,000 Service Kilux | VEH1356 KILUX 2000, K0M663 |
| 5 | Start | STOCK GK HP00 F000 | 20,000 Service, Cherry 1400 | VEH1903 CHERRY 1400, DGD333 |
| 6 | Start | STOCK GK HP00 F000 | 20,000 Vehicle Rust Inspect, | VEH1903 CHERRY 1400, DGD333 |
| 7 | 13/04/10 | STOCK GK HP00 F000 | 10,000 Vehicle Rust Inspect, | VEH1901 HANDA 1600, AAE387 |
| 8 | Start | STOCK GK HP00 F000 | 10,000 km Service, Honda 160 | VEH1901 HANDA 1600, AAE387 |
| 9 | Start | STOCK GK HP00 F000 | 160,000 Vehicle Rust Inspect | veh1352 KILUX 2000, JRG152 |
| 10 | 13/04/10 | STOCK GK HP00 F000 | Inspect, Lubricate | Seq002 Conveyor Chain |
| 11 | Start | STOCK GK HP00 F000 | Grease | Seq002 Conveyor Chain |
| 12 | 13/04/10 | STOCK GK HP00 F000 | Chain Adjust | Seq002 Conveyor Chain |
| 13 | Start | STOCK GK HP00 F000 | 10,000 Service Kilux | VEH1363 KILUX 2000, CDD201 |
| 14 | Start | STOCK GK HP01 F000 | 10,000 Vehicle Rust Inspect, | VEH1363 KILUX 2000, CDD201 |
| 15 | Start | STOCK GK HP00 F000 | 100,000 Service Kilux | veh1367 KILUX 2000, A35888 |
| 16 | Start | STOCK GK HP00 F000 | 70,000 Vehicle Rust Inspect, | veh1368 KILUX 2000, AHD444 |
| 17 | Start | STOCK GK HP00 F000 | Grease | Seq003 Transmission Chain # 3 |
| 18 | Start | STOCK GK HP00 F000 | Inspect, Lubricate | Seq003 Transmission Chain # 3 |
| 19 | Start | STOCK GK HP00 F000 | Service Oil Burners | Seq001 FACTORY BOILER no 1 |
| 20 | Start | STOCK GK HP00 F000 | 50,000 Vehicle Rust Inspect, | veh1904 HANDA 1600, H2H444 |
| 21 | Start | STOCK GK HP00 F001 | Renewal of Boiler Tubes | Seq001 FACTORY BOILER no 1 |
| 22 | Start | STOCK GK HP00 F000 | Welding Repairs | Seq001 FACTORY BOILER no 1 |

Slide 57
Slide notes:

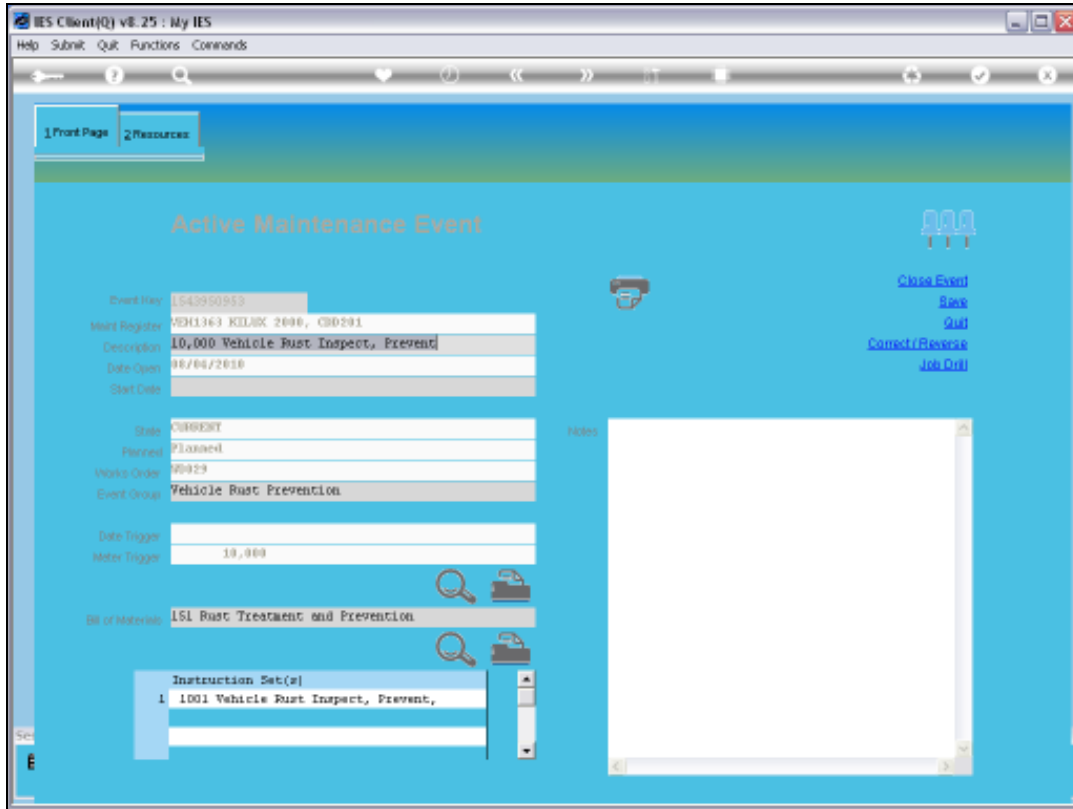
The screenshot displays the IES Client v8.25 interface. The window title is "IES Client(Q) v8.25 : My IES". The menu bar includes "Help", "Submit", "Quit", "Functions", and "Commands". The browser address bar shows "http://localhost:8080/ies/". The page has two tabs: "1 Front Page" and "2 Resources". The main content area is titled "Active Maintenance Event" and features a blue background. On the right side, there are three user icons and a list of actions: "Close Event", "Risk", "Quit", "Correct/Rework", and "Job Done". The form contains the following fields:

- Event No: 1542950953
- Work Register: M01363 KELDEX 2498, C80291
- Description: 10,000 Vehicle Rust Inspect, Prevent
- Date Open: 18/04/2010
- Start Date: [empty]
- State: CURRENT
- Planned: Planned
- Work Order: 20429
- Event Group: Vehicle Rust Prevention
- Date Trigger: [empty]
- Water Trigger: 10,000
- Bill of Material: ISI Rust Treatment and Prevention
- Instruction Set(s): 1 1001 Vehicle Rust Inspect, Prevent,

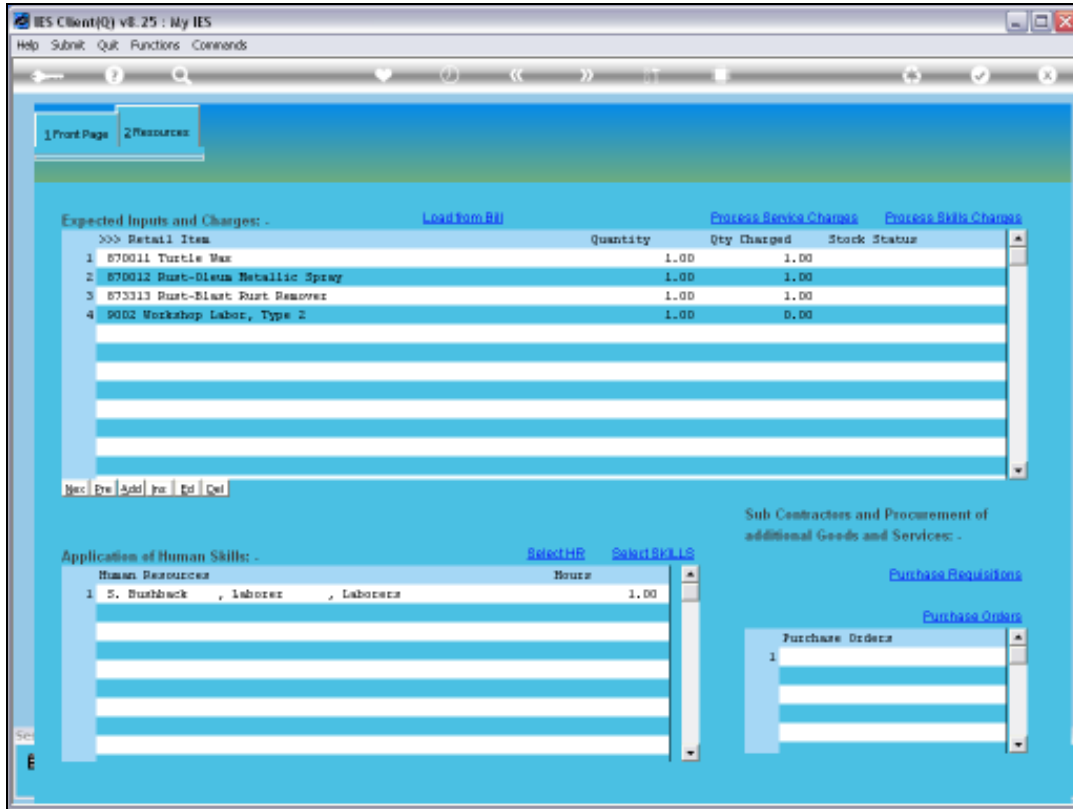
A "Notes" field is present on the right side of the form, which is currently empty.

Slide 58

Slide notes: If we should look at our Current Maintenance Event from the Active Dashboard now, then we will also see that the Stock has been issued.

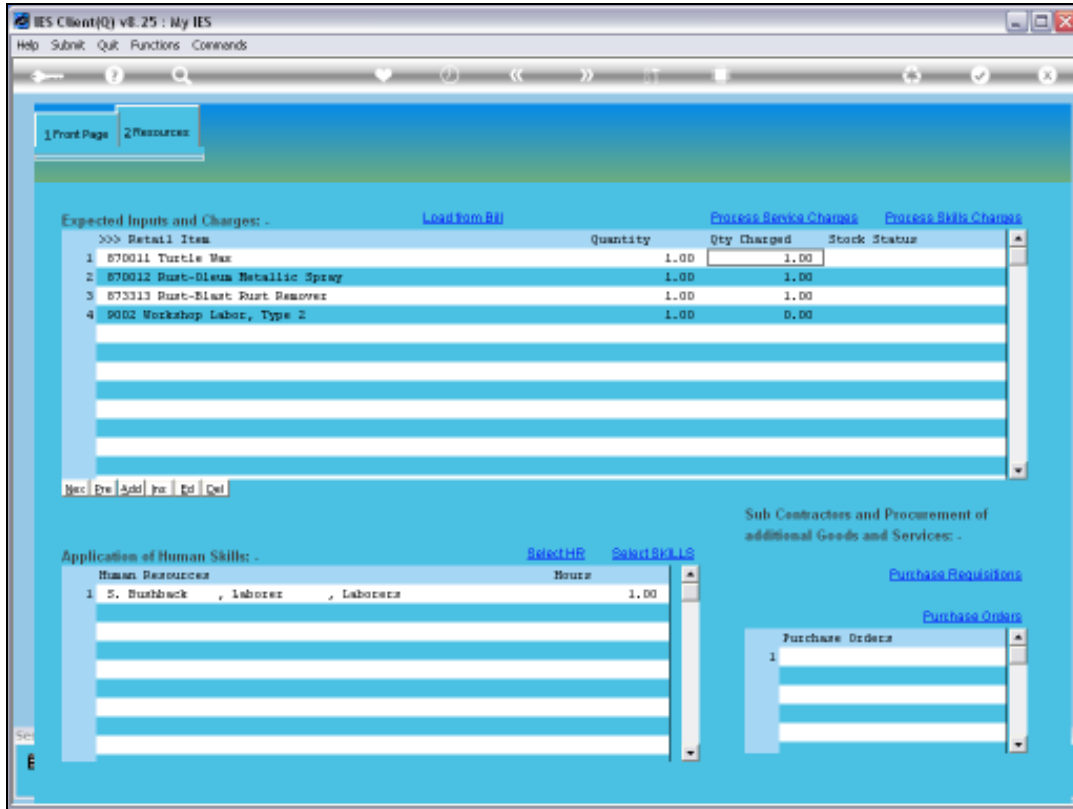


Slide 59
Slide notes:

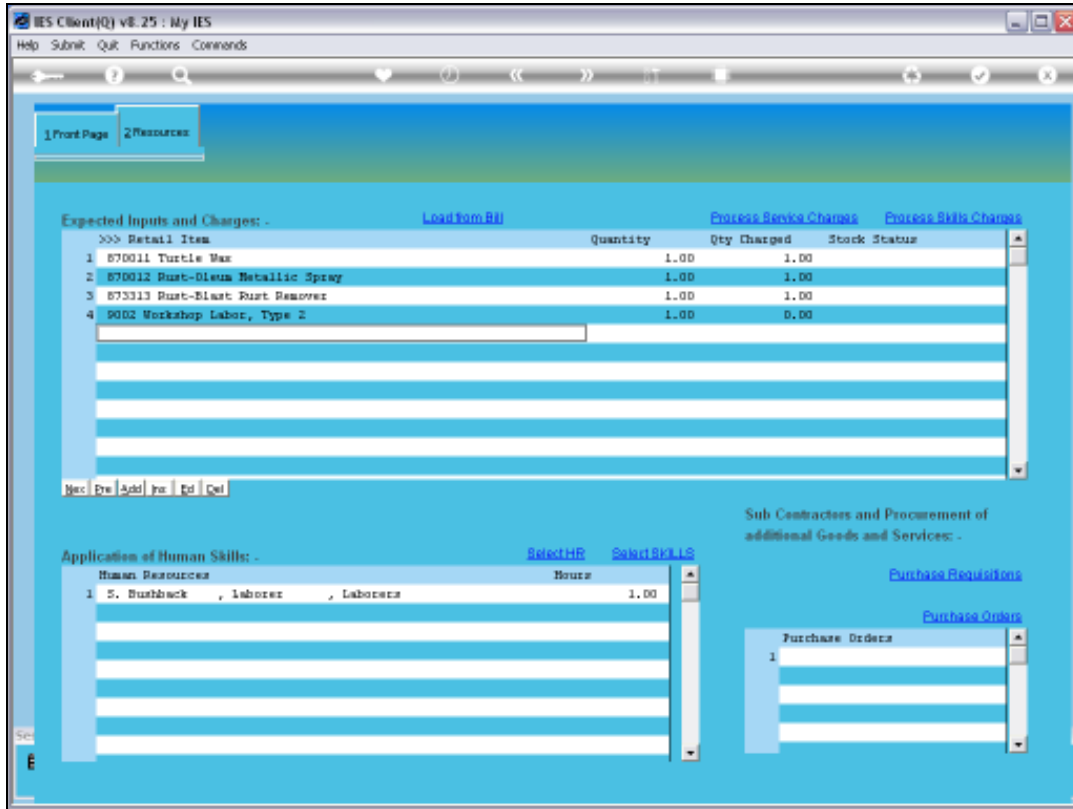


Slide 60

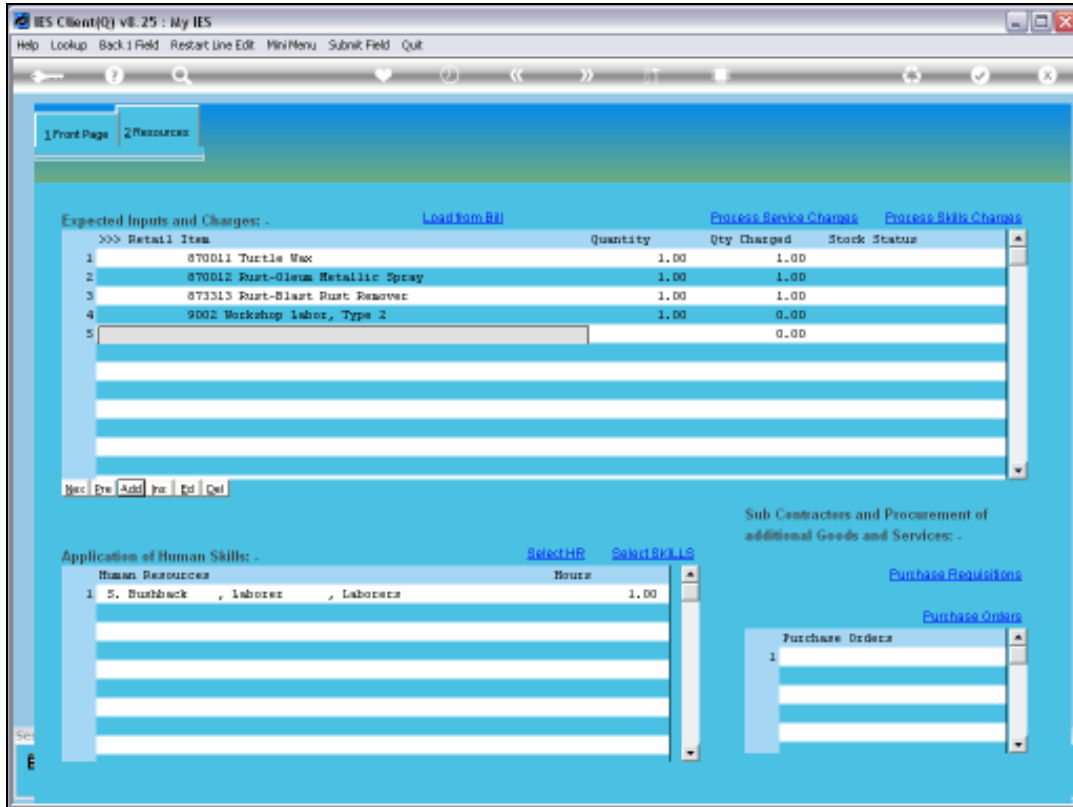
Slide notes: And here we can see that the Stock Status no longer shows reserved Stock, and that the 'Quantity Charged' indicates where Stock has been issued.



Slide 61
Slide notes:

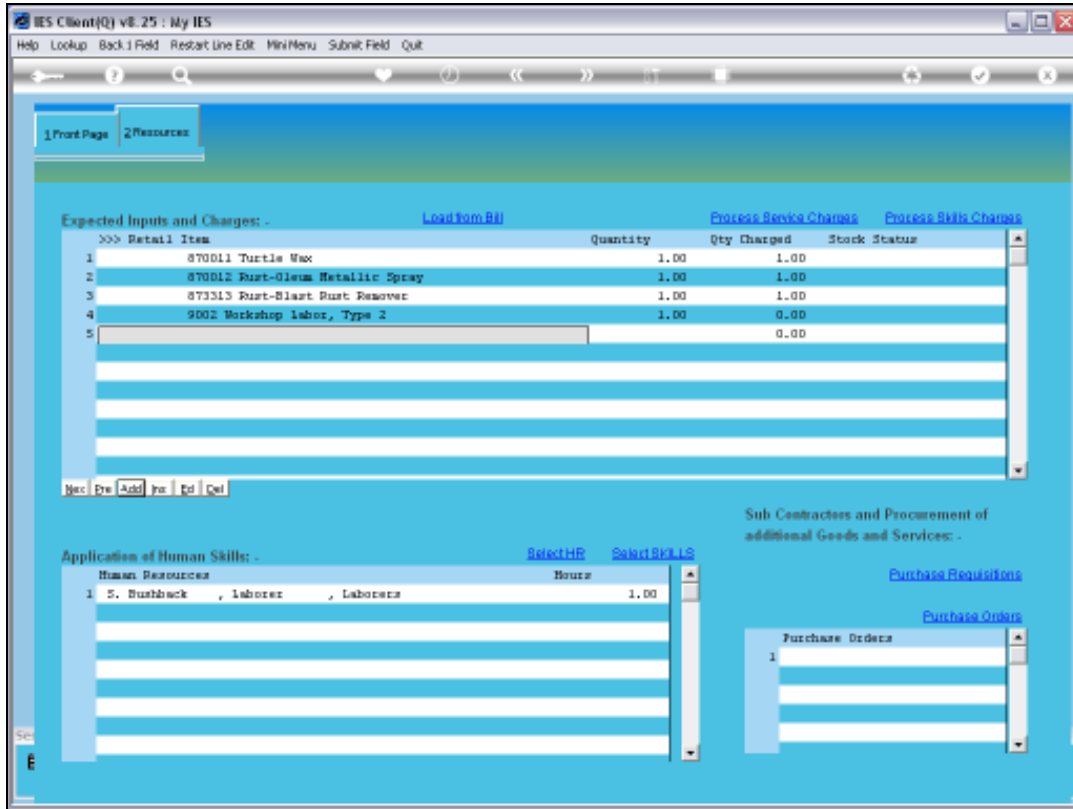


Slide 62
Slide notes:

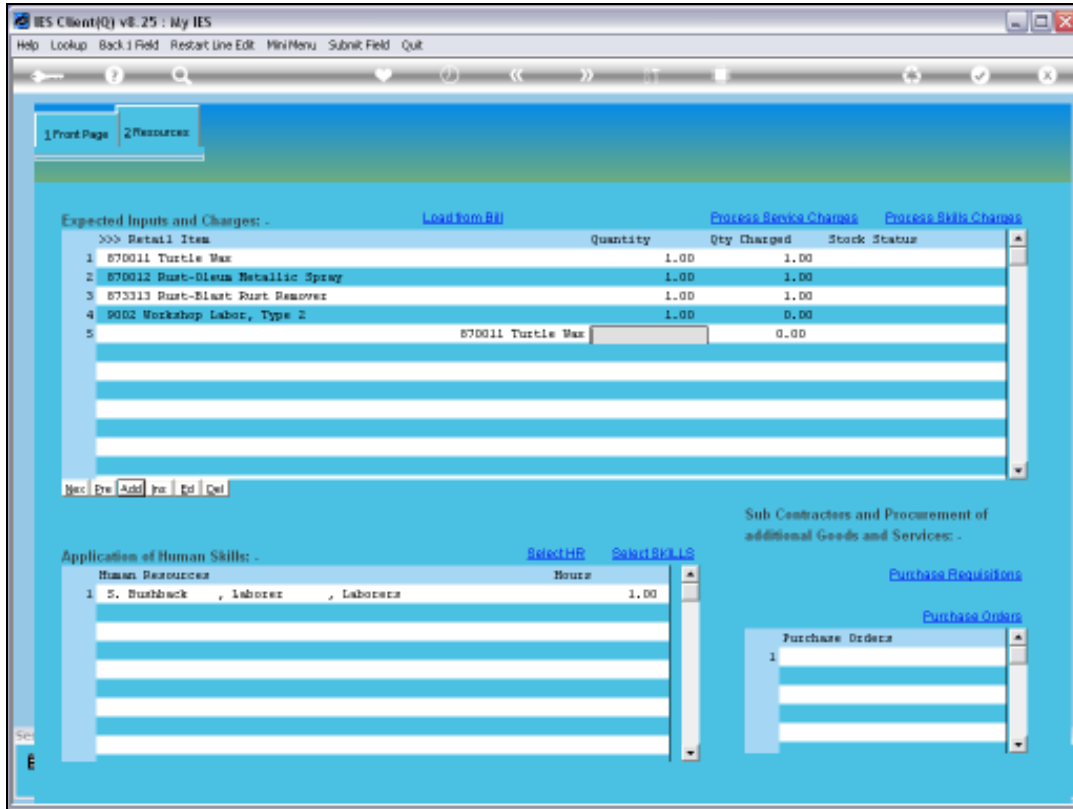


Slide 63

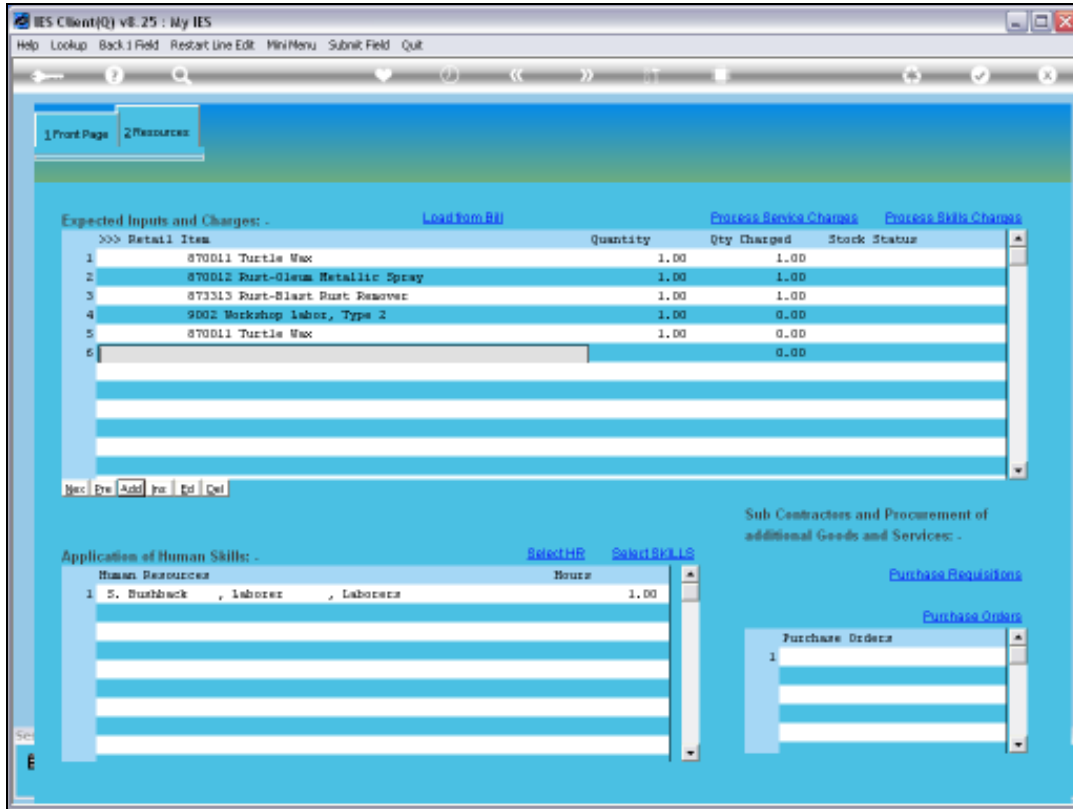
Slide notes: Now we will show that the Maintenance Event is on-going, and it is possible to add more Stock requirements, despite prior Issues already having been performed.



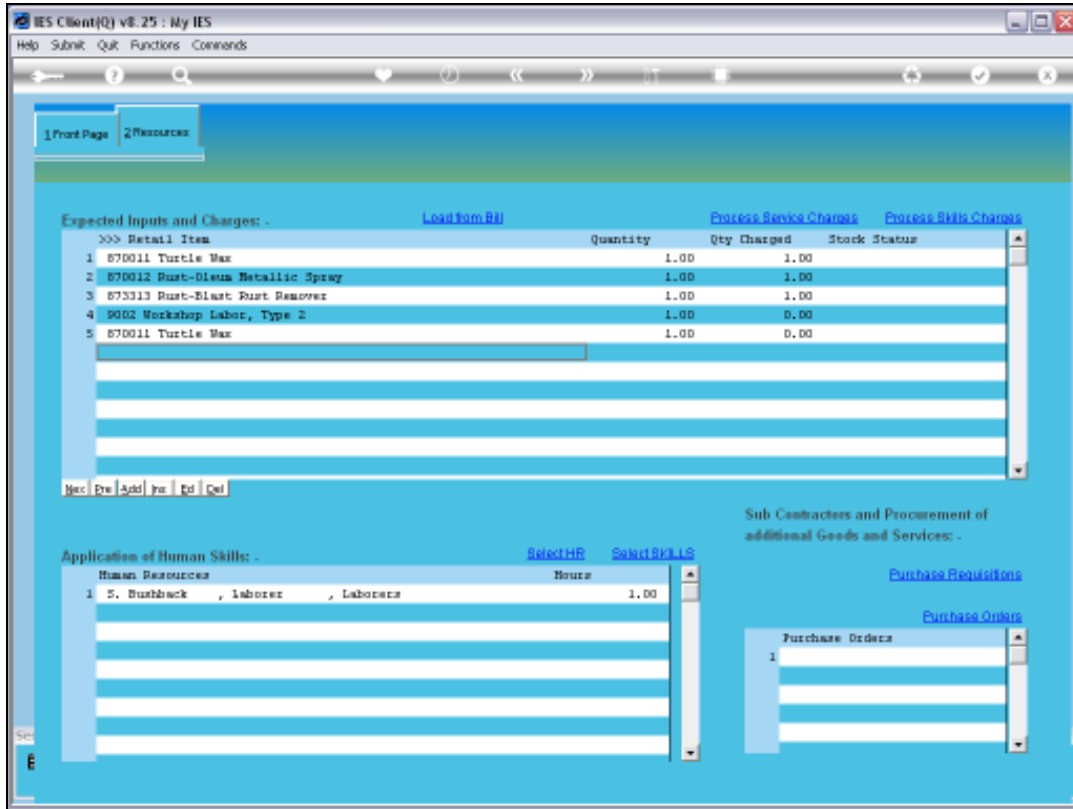
Slide 64
Slide notes:



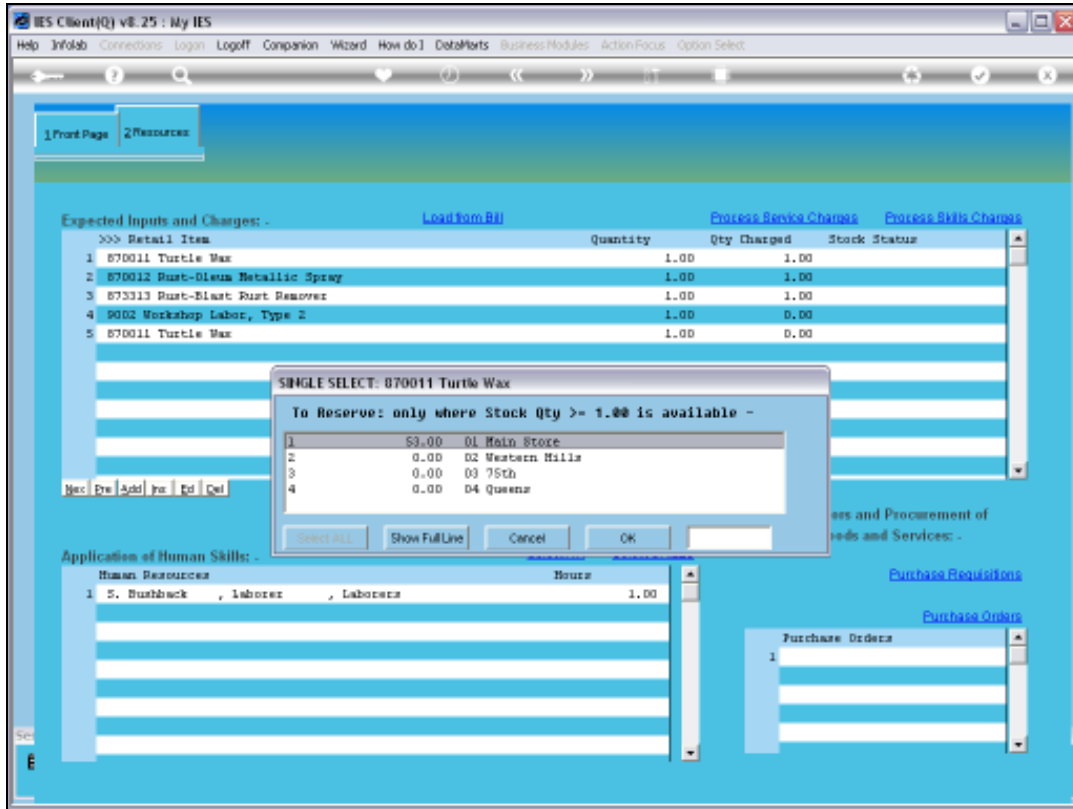
Slide 65
Slide notes:



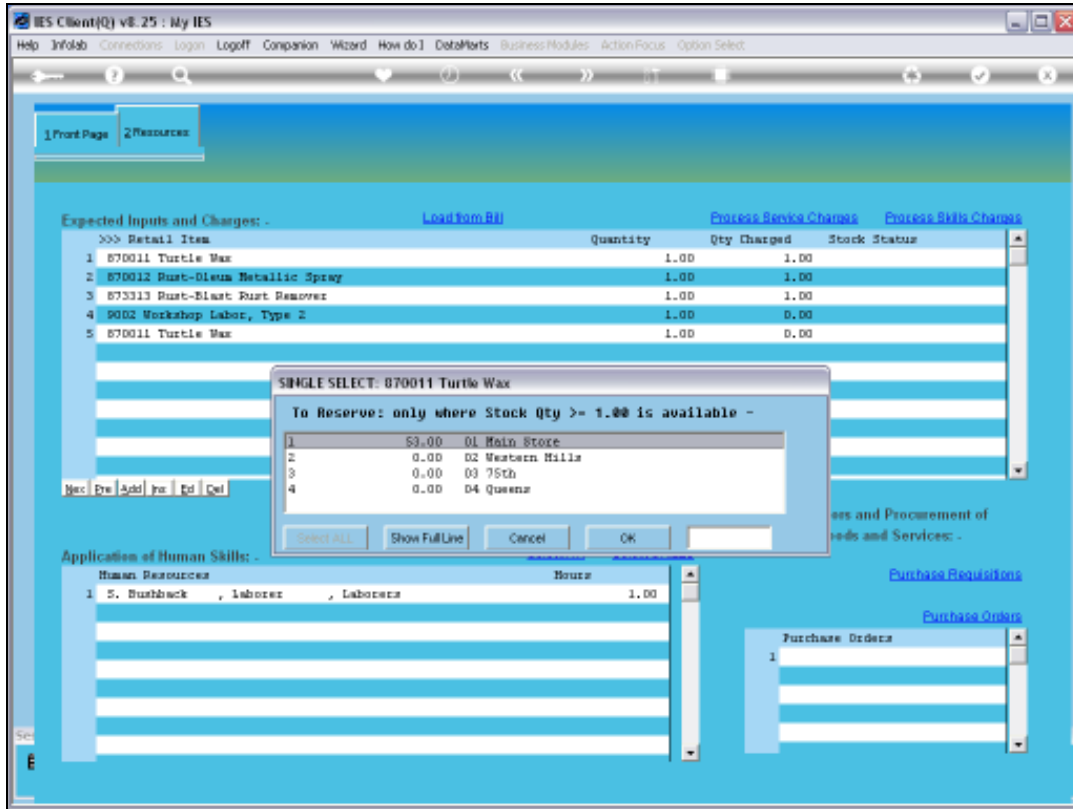
Slide 66
Slide notes:



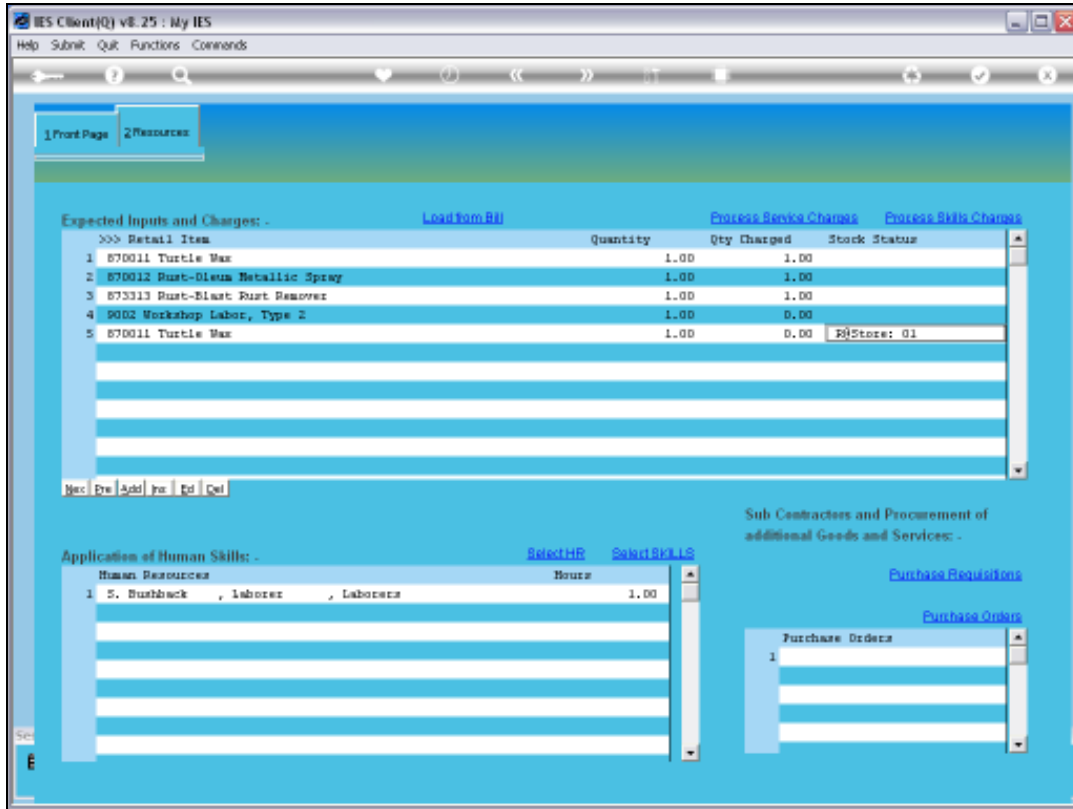
Slide 67
Slide notes:



Slide 68
Slide notes:

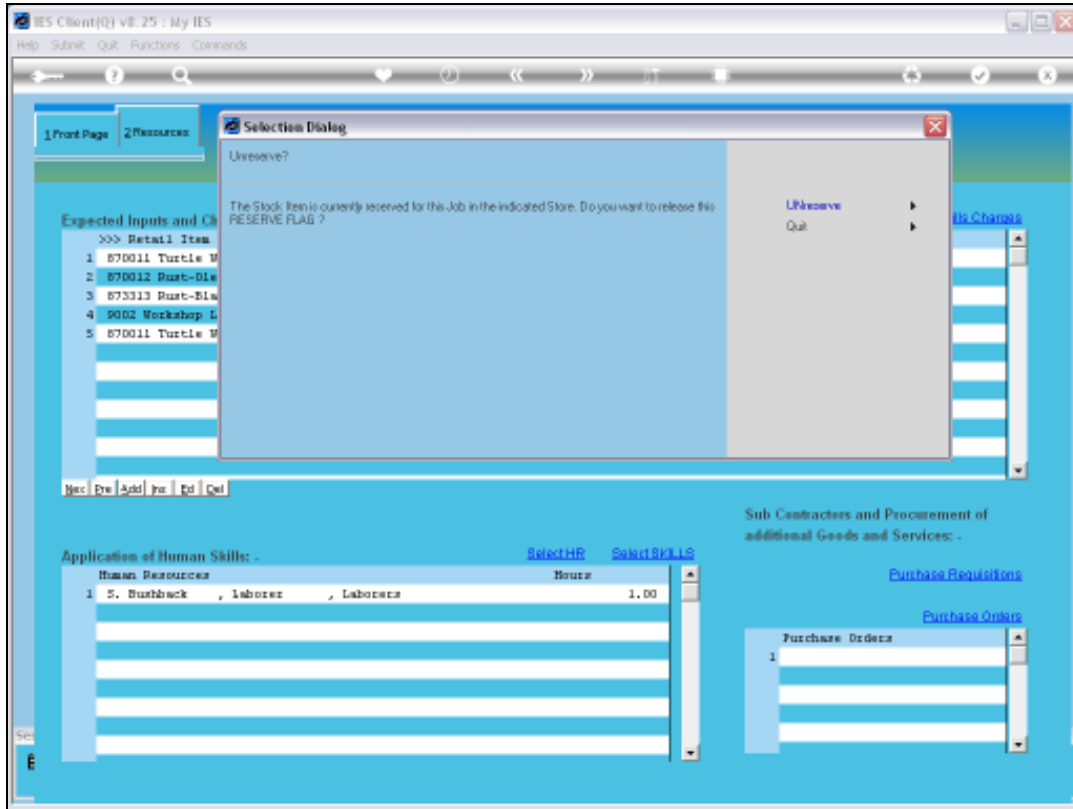


Slide 69
Slide notes:



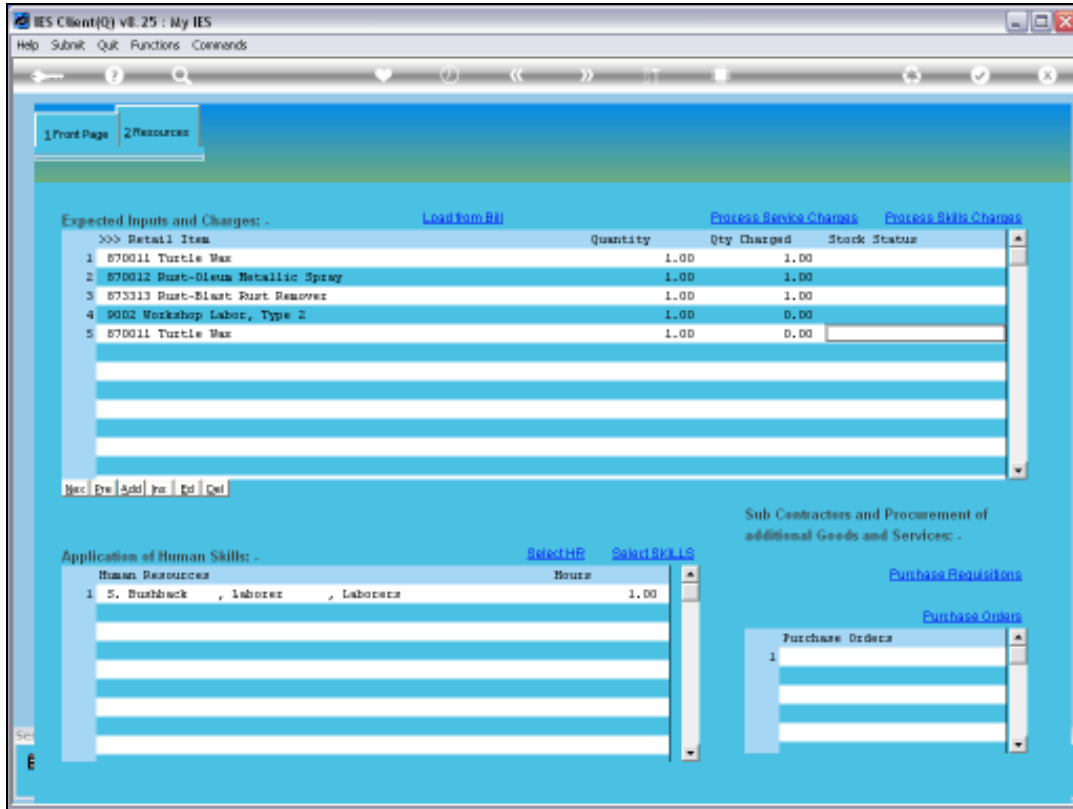
Slide 70

Slide notes:



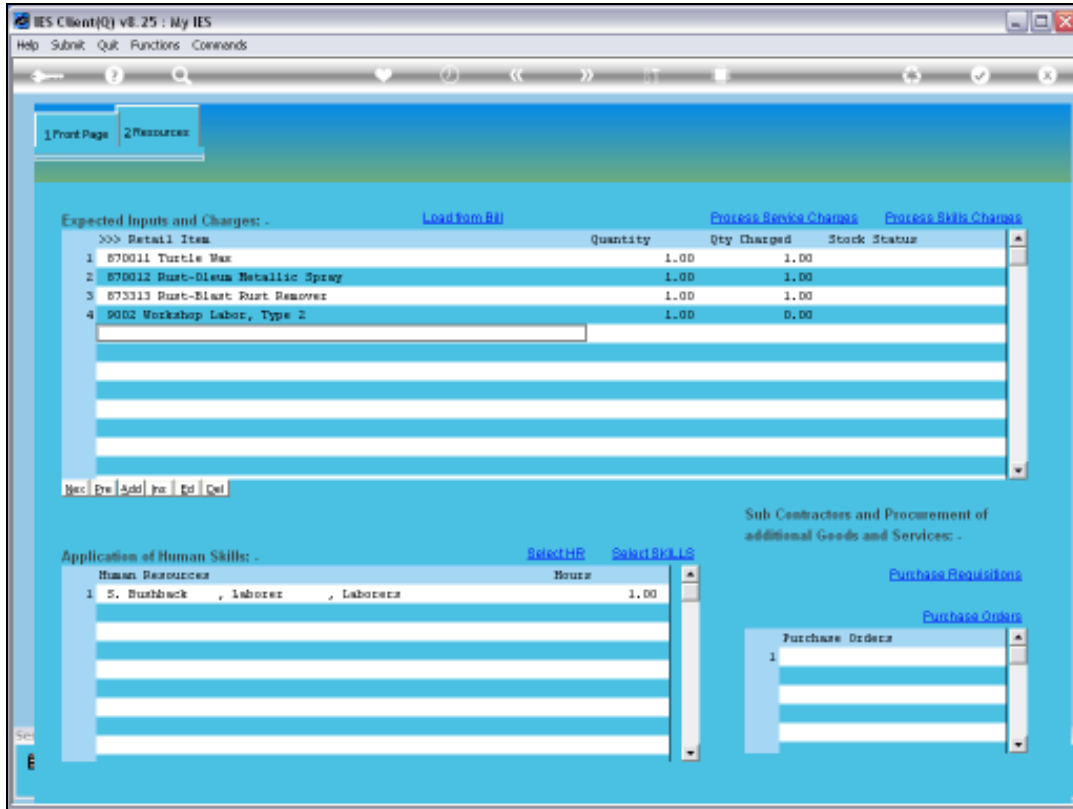
Slide 71

Slide notes: We can also UNreserve Stock.



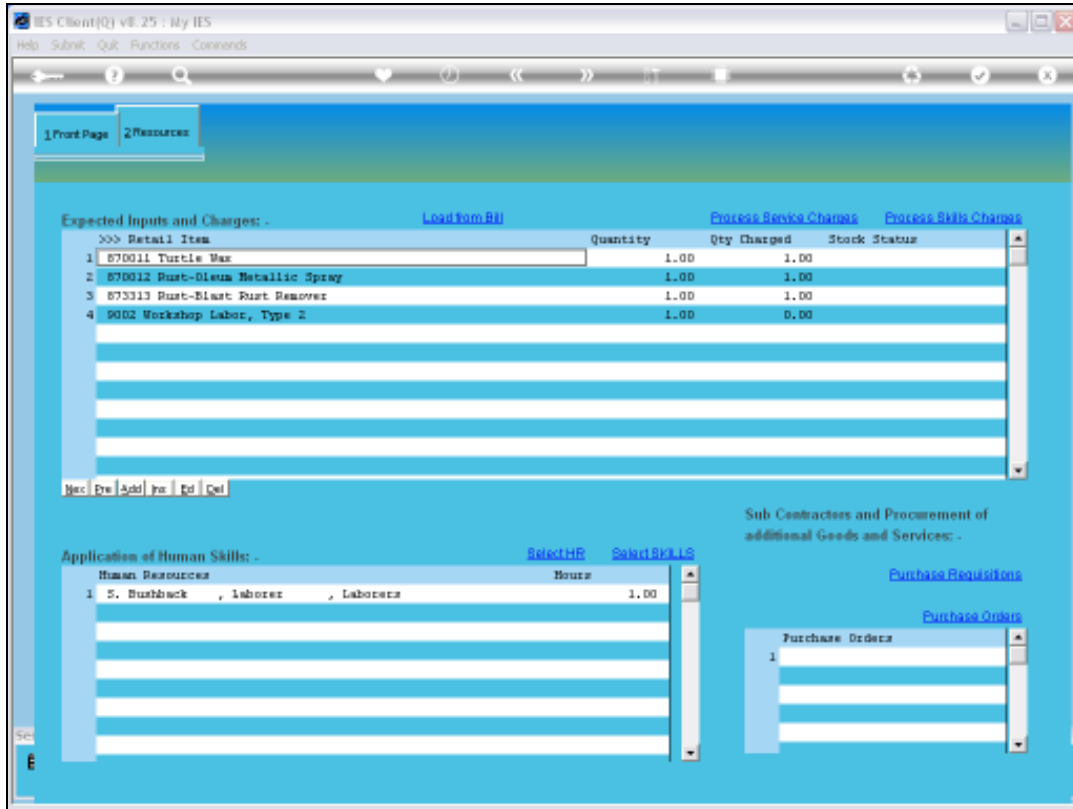
Slide 72

Slide notes: And we'll remove the line again, as it was only for demonstration purposes.



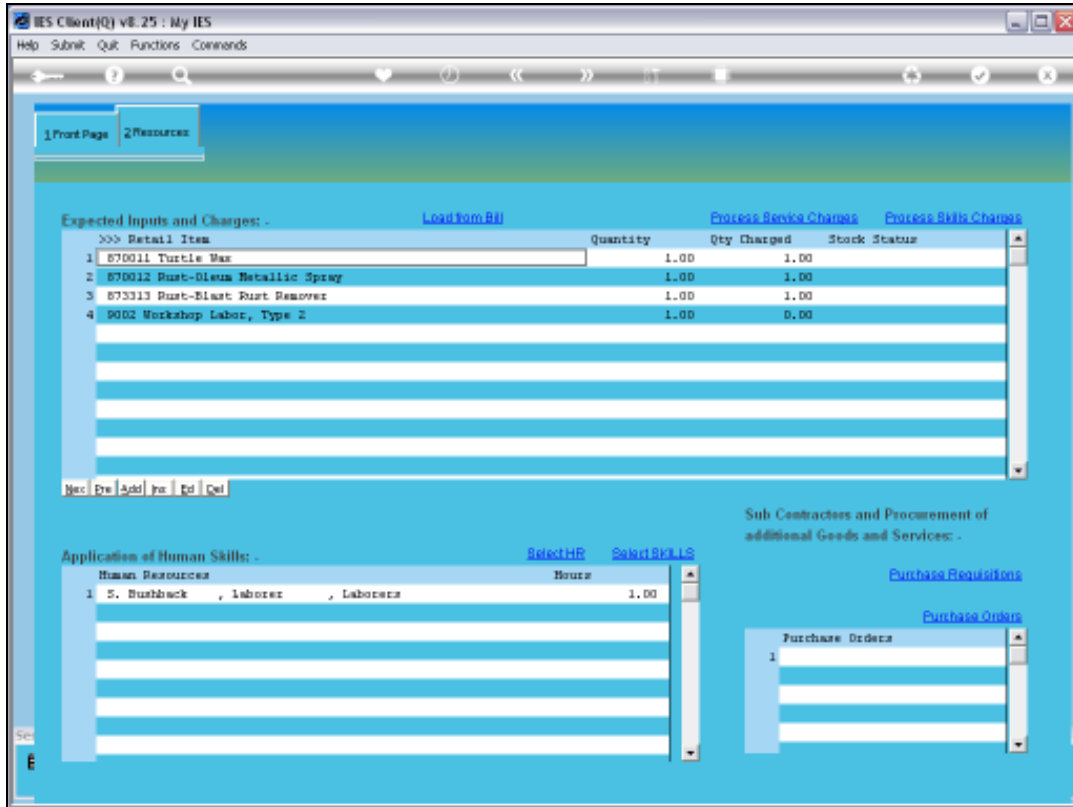
Slide 73

Slide notes: What we cannot do, is to tamper with a line where the Stock has already been issued.

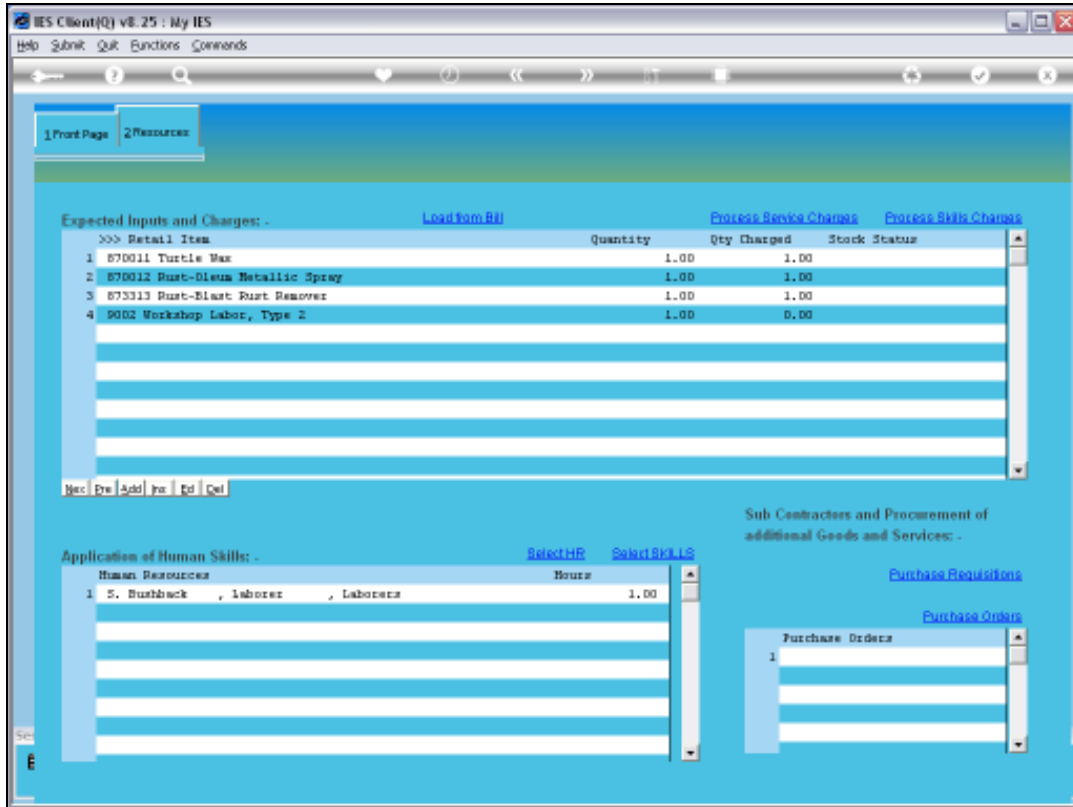


Slide 74

Slide notes:

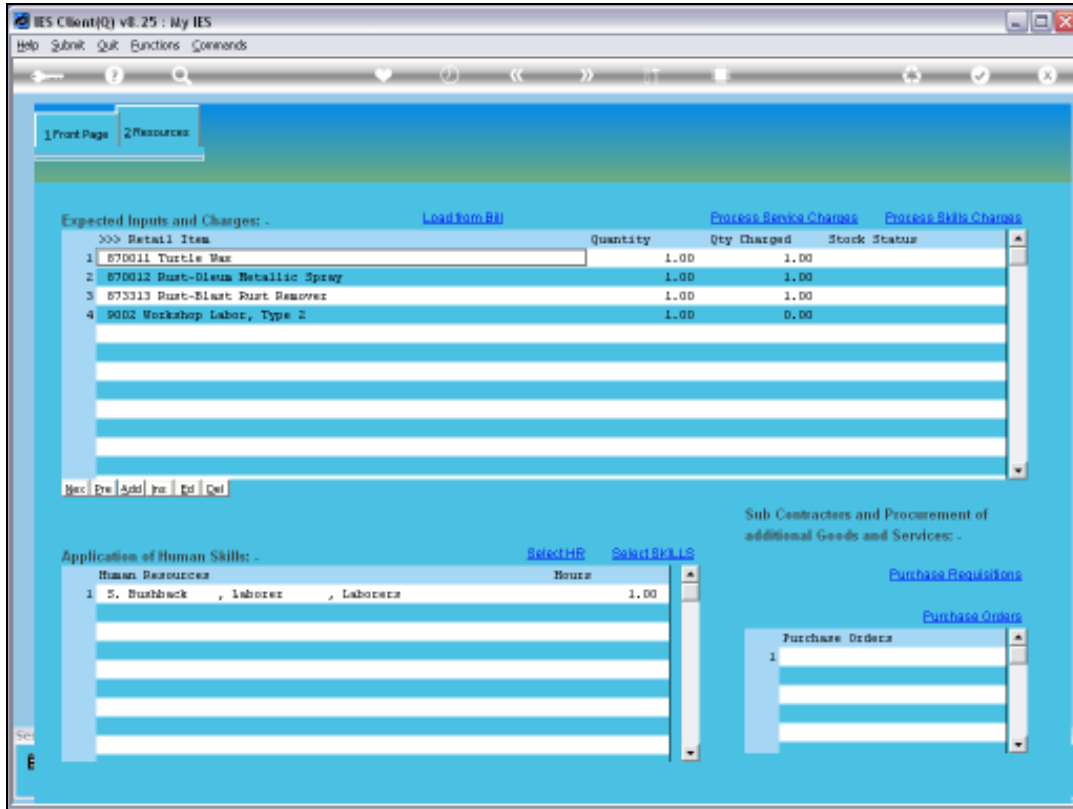


Slide 75
 Slide notes:

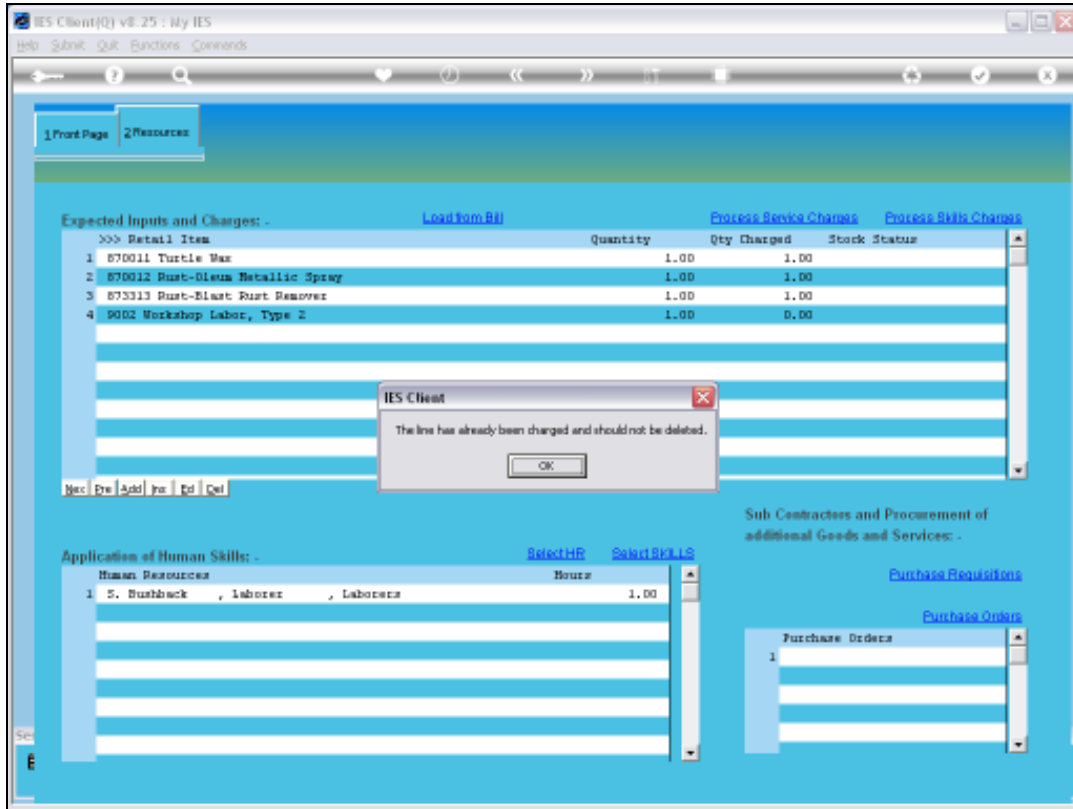


Slide 76

Slide notes:

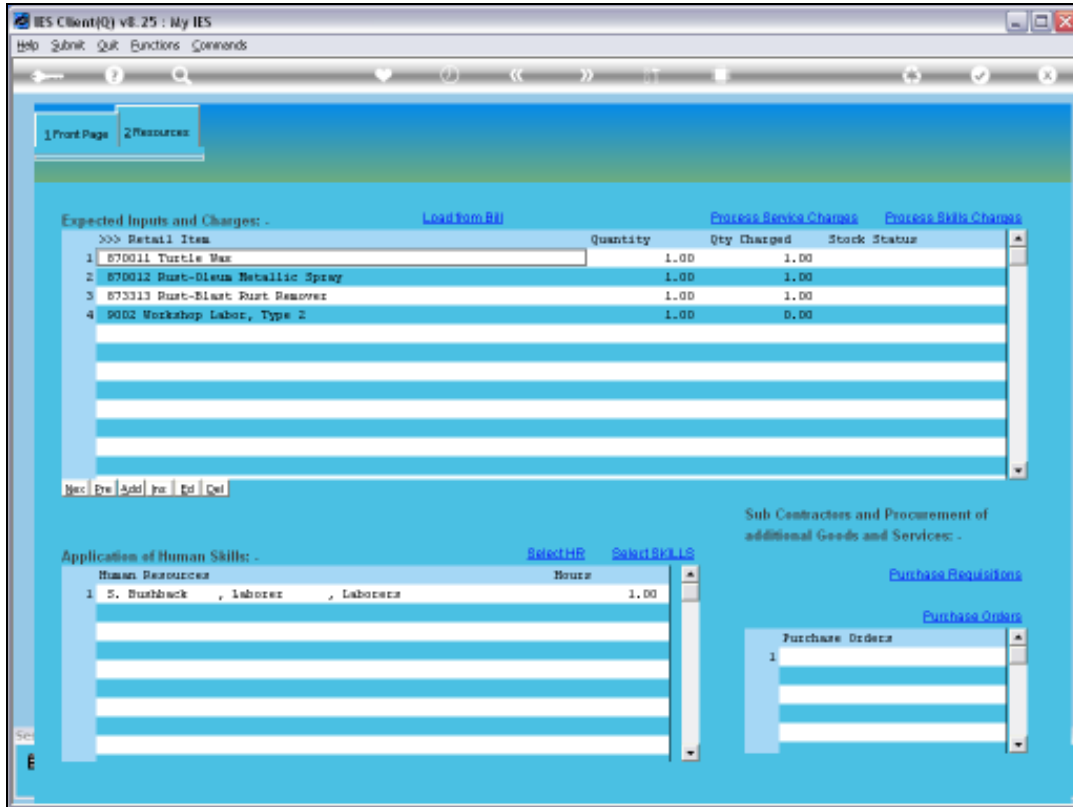


Slide 77
Slide notes:



Slide 78

Slide notes: As we can see, we can no longer delete this line, as is usually allowed before the Stock is Issued. We can increase the Stock Quantity for the line, but we cannot perform any other editing on the line when some Issue has already been performed on it.



Slide 79

Slide notes: So we see that the Stock Items for a Planned Maintenance Event are easily managed and well facilitated.