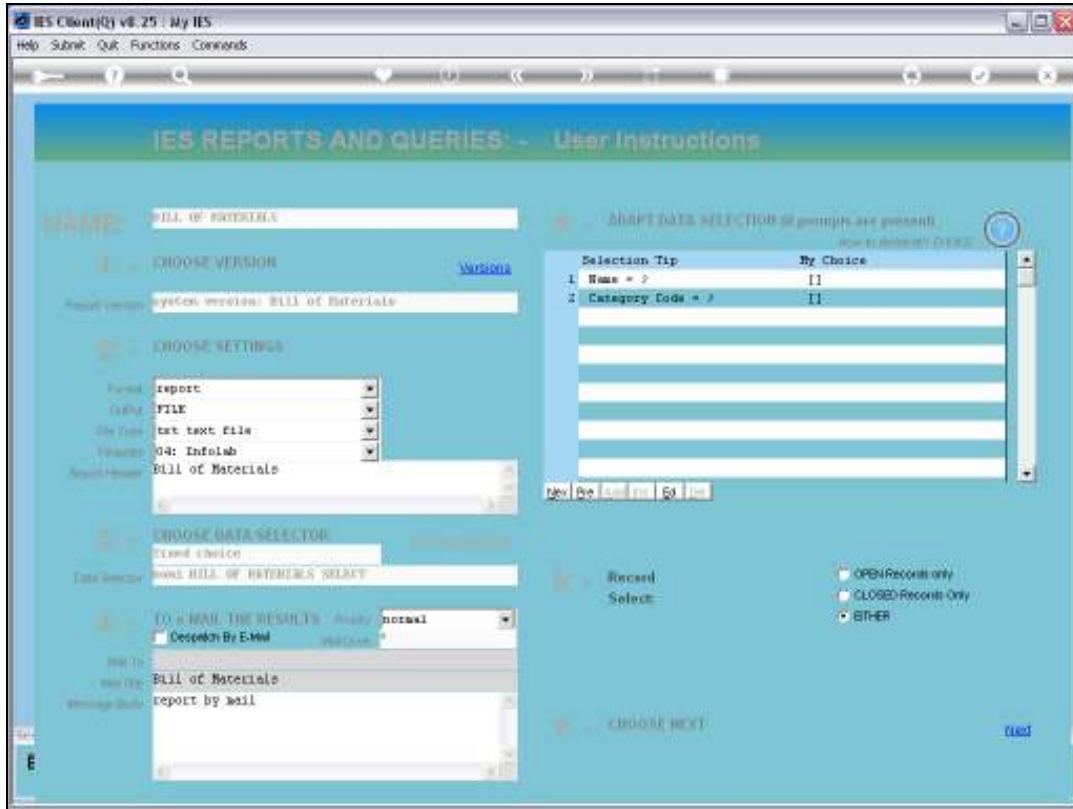
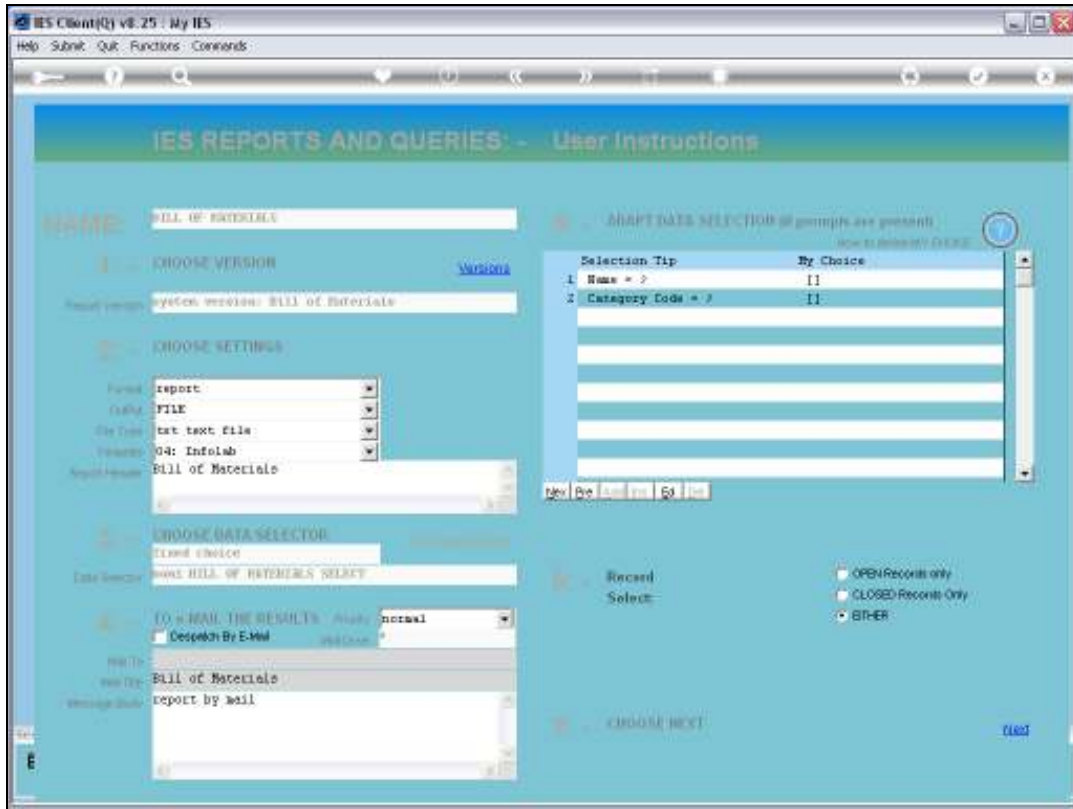


Slide 1

Slide notes: The Bill of Materials Report is a listing of selected Bills of Materials, from the master register.

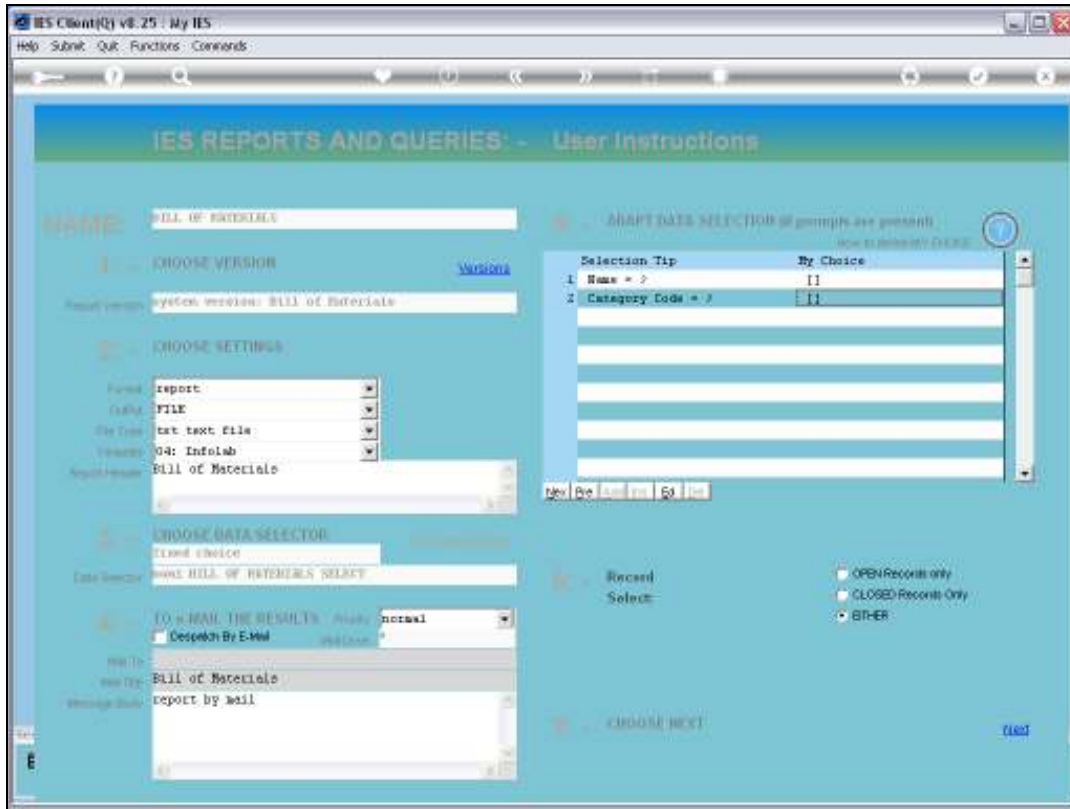


Slide 2  
Slide notes:



Slide 3

Slide notes: There may be many Bills of Materials in the system, and we can select by Name and / or Category if we do not wish to list all the Bills.



Slide 4  
Slide notes:

Q1543055413A.TXT - Notepad

File Edit Format View Help

[Infolab (Pty) Ltd

15:23:33 07 APR 2010 page 1

Bill of Materials

BM1.....	Key.....	Name.....	Category.....
007	007	Apple Juice 6,800 L, fill 20k bottles 34 0ml	Manufacture
004	004	Grape Fruit 6,000 L, fill 12k bottles 50 0ml	Manufacture
003	003	Grape Fruit 6,800 L, fill 20k bottles 34 0ml	Manufacture
001	001	Juice Run, Orange, 20k x 340ml bottle	Manufacture
002	002	Orange Juice 6,000 L, fill 12k bottles 5 00ml	Manufacture
006	006	Pear Juice 6,000 L, fill 12k bottles 500 ml	Manufacture
005	005	Pear Juice 6,800 L, fill 20k bottles 340 ml	Manufacture
			**
8090	8090	TYRE REPLACEMENT - BRIDGESTONE	TYRES
8086	8086	TYRE REPLACEMENT - CONTINENTAL	TYRES
8087	8087	TYRE REPLACEMENT - FIRESTONE	TYRES
8088	8088	TYRE REPLACEMENT - GOODYEAR	TYRES
8085	8085	TYRE REPLACEMENT - HAWK	TYRES
8089	8089	TYRE REPLACEMENT - MICHELIN	TYRES
			**
101	101	KLUX, 10 000 kwh	Vehicles
110	110	KLUX, 100 000 kwh	Vehicles
111	111	KLUX, 110 000 kwh	Vehicles
112	112	KLUX, 120 000 kwh	Vehicles
113	113	KLUX, 130 000 kwh	Vehicles
114	114	KLUX, 140 000 kwh	Vehicles
115	115	KLUX, 150 000 kwh	Vehicles
116	116	KLUX, 160 000 kwh	Vehicles
117	117	KLUX, 170 000 kwh	Vehicles
118	118	KLUX, 180 000 kwh	Vehicles
119	119	KLUX, 190 000 kwh	Vehicles
102	102	KLUX, 20 000 kwh	Vehicles
120	120	KLUX, 200 000 kwh	Vehicles
103	103	KLUX, 30 000 kwh	Vehicles

Slide 5

Slide notes: Here we see an example of the Report, with a listing of Bills of Materials in their Categories. This report is not intended to list the content of the various Bills, and that can be done from the Bill of Materials master screen.

Q1543055413A.TXT - Notepad

File Edit Format View Help

Infolab (Pty) Ltd

15:23:33 07 APR 2010 page 1

Bill of Materials

BOML.....	Key.....	Name.....	Category.....
007	007	Apple Juice 6,800 L, fill 20k bottles 34 0ml	Manufacture
004	004	Grape Fruit 6,000 L, fill 12k bottles 50 0ml	Manufacture
003	003	Grape Fruit 6,800 L, fill 20k bottles 34 0ml	Manufacture
001	001	Juice Run, Orange, 20k x 340ml bottle	Manufacture
002	002	Orange Juice 6,000 L, fill 12k bottles 5 00ml	Manufacture
006	006	Pear Juice 6,000 L, fill 12k bottles 500 ml	Manufacture
005	005	Pear Juice 6,800 L, fill 20k bottles 340 ml	Manufacture
			**
8390	8390	TYRE REPLACEMENT - BRIDGESTONE	TYRES
8386	8386	TYRE REPLACEMENT - CONTINENTAL	TYRES
8387	8387	TYRE REPLACEMENT - FIRESTONE	TYRES
8388	8388	TYRE REPLACEMENT - GOODYEAR	TYRES
8385	8385	TYRE REPLACEMENT - HAWK	TYRES
8389	8389	TYRE REPLACEMENT - MICHELIN	TYRES
			**
101	101	KIUM, 10 000 kwh	Vehicles
110	110	KIUM, 100 000 kwh	Vehicles
111	111	KIUM, 110 000 kwh	Vehicles
112	112	KIUM, 120 000 kwh	Vehicles
113	113	KIUM, 130 000 kwh	Vehicles
114	114	KIUM, 140 000 kwh	Vehicles
115	115	KIUM, 150 000 kwh	Vehicles
116	116	KIUM, 160 000 kwh	Vehicles
117	117	KIUM, 170 000 kwh	Vehicles
118	118	KIUM, 180 000 kwh	Vehicles
119	119	KIUM, 190 000 kwh	Vehicles
102	102	KIUM, 20 000 kwh	Vehicles
120	120	KIUM, 200 000 kwh	Vehicles
103	103	KIUM, 30 000 kwh	Vehicles

Slide 6

Slide notes:

Q1543055413A.TXT - Notepad

File Edit Format View Help

[Infolab (Pty) Ltd

15:23:33 07 APR 2010 page 1

Bill of Materials

BOML.....	Key.....	Name.....	Category.....
007	007	Apple Juice 6,800 L, fill 20k bottles 34 0ml	Manufacture
004	004	Grape Fruit 6,000 L, fill 12k bottles 50 0ml	Manufacture
003	003	Grape Fruit 6,800 L, fill 20k bottles 34 0ml	Manufacture
001	001	Juice Run, Orange, 20k x 340ml bottle	Manufacture
002	002	Orange Juice 6,000 L, fill 12k bottles 5 00ml	Manufacture
006	006	Pear Juice 6,000 L, fill 12k bottles 500 ml	Manufacture
005	005	Pear Juice 6,800 L, fill 20k bottles 340 ml	Manufacture
			**
8390	8390	TYRE REPLACEMENT - BRIDGESTONE	TYRES
8386	8386	TYRE REPLACEMENT - CONTINENTAL	TYRES
8387	8387	TYRE REPLACEMENT - FIRESTONE	TYRES
8388	8388	TYRE REPLACEMENT - GOODYEAR	TYRES
8385	8385	TYRE REPLACEMENT - HAWK	TYRES
8389	8389	TYRE REPLACEMENT - MICHELIN	TYRES
			**
101	101	KIUM, 10 000 kwh	Vehicles
110	110	KIUM, 100 000 kwh	Vehicles
111	111	KIUM, 110 000 kwh	Vehicles
112	112	KIUM, 120 000 kwh	Vehicles
113	113	KIUM, 130 000 kwh	Vehicles
114	114	KIUM, 140 000 kwh	Vehicles
115	115	KIUM, 150 000 kwh	Vehicles
116	116	KIUM, 160 000 kwh	Vehicles
117	117	KIUM, 170 000 kwh	Vehicles
118	118	KIUM, 180 000 kwh	Vehicles
119	119	KIUM, 190 000 kwh	Vehicles
102	102	KIUM, 20 000 kwh	Vehicles
120	120	KIUM, 200 000 kwh	Vehicles
103	103	KIUM, 30 000 kwh	Vehicles

Slide 7

Slide notes: