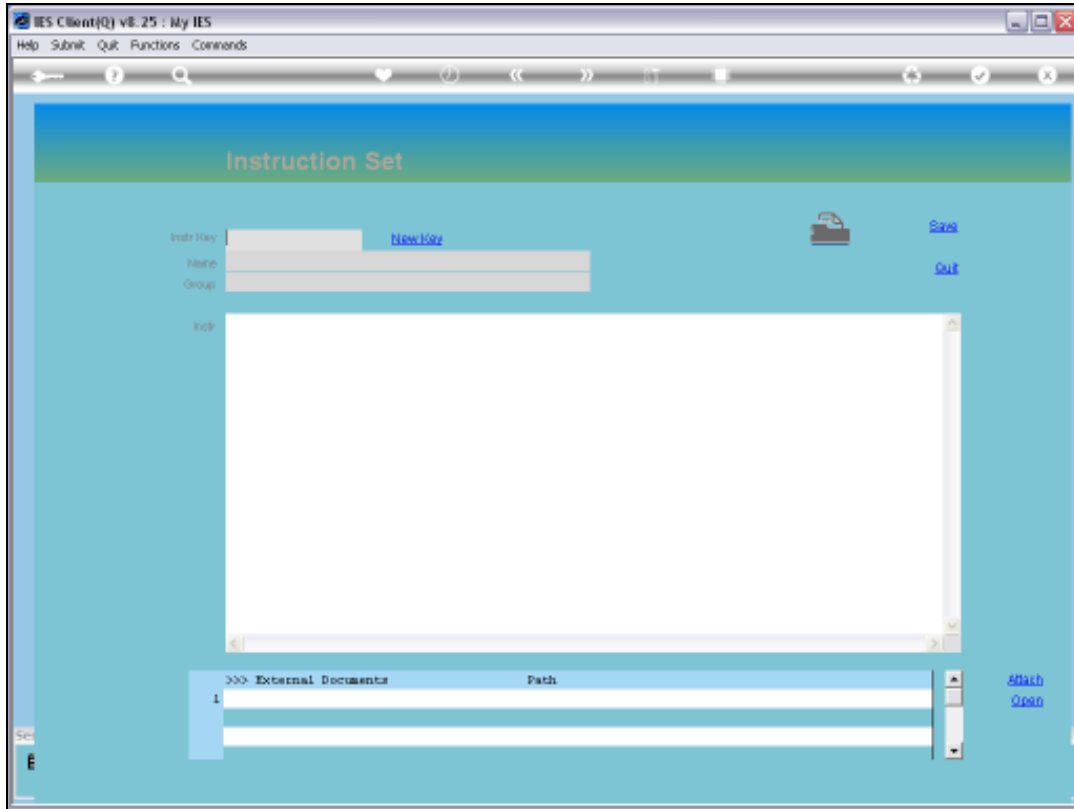
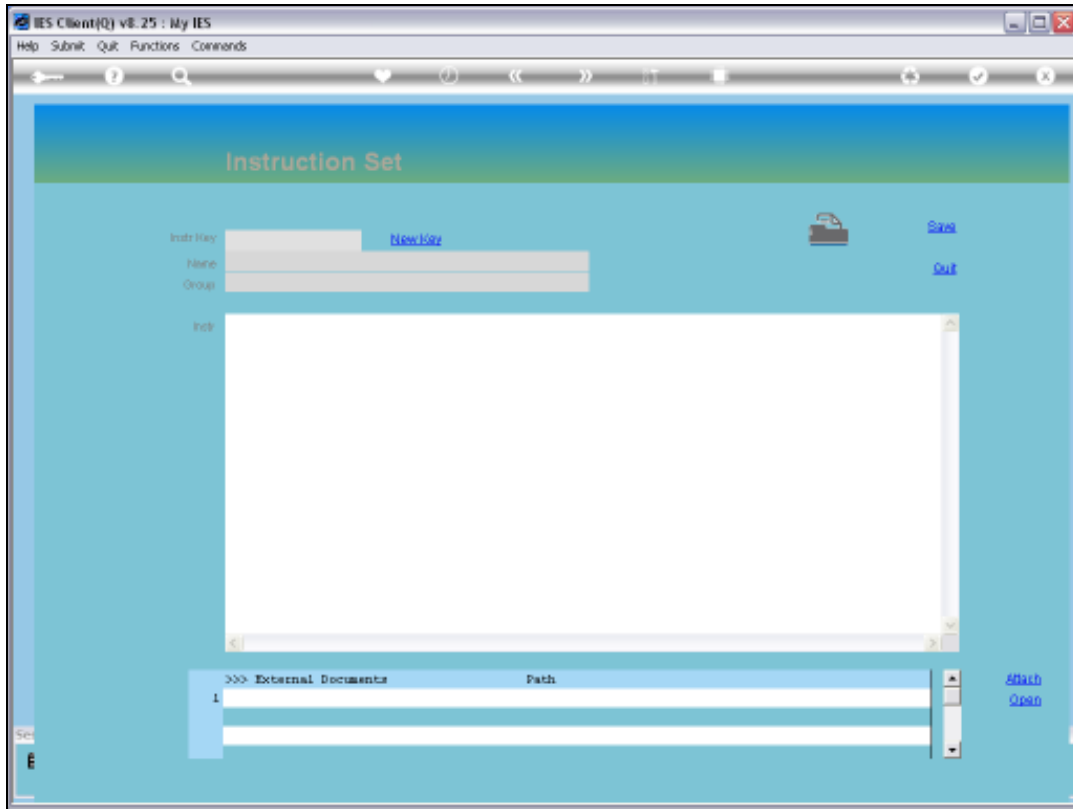


Slide 1

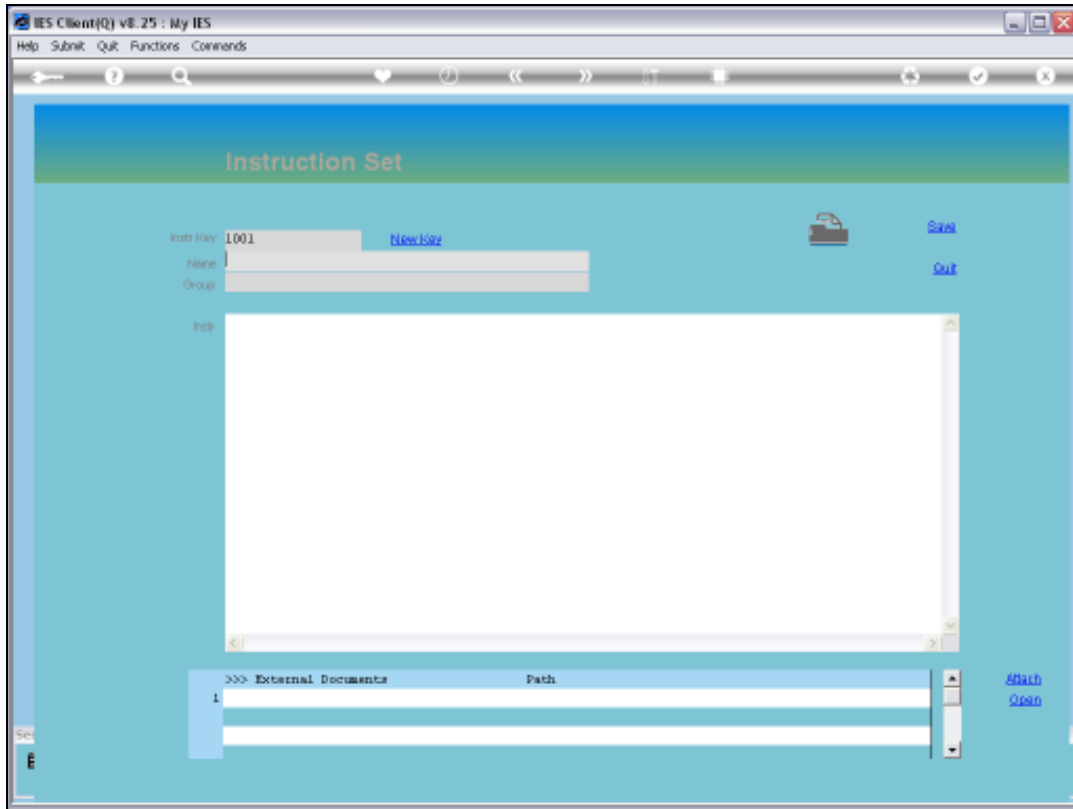
Slide notes: We may attach 1 or more Instruction Sets, also called Procedures, to a Maintenance event.



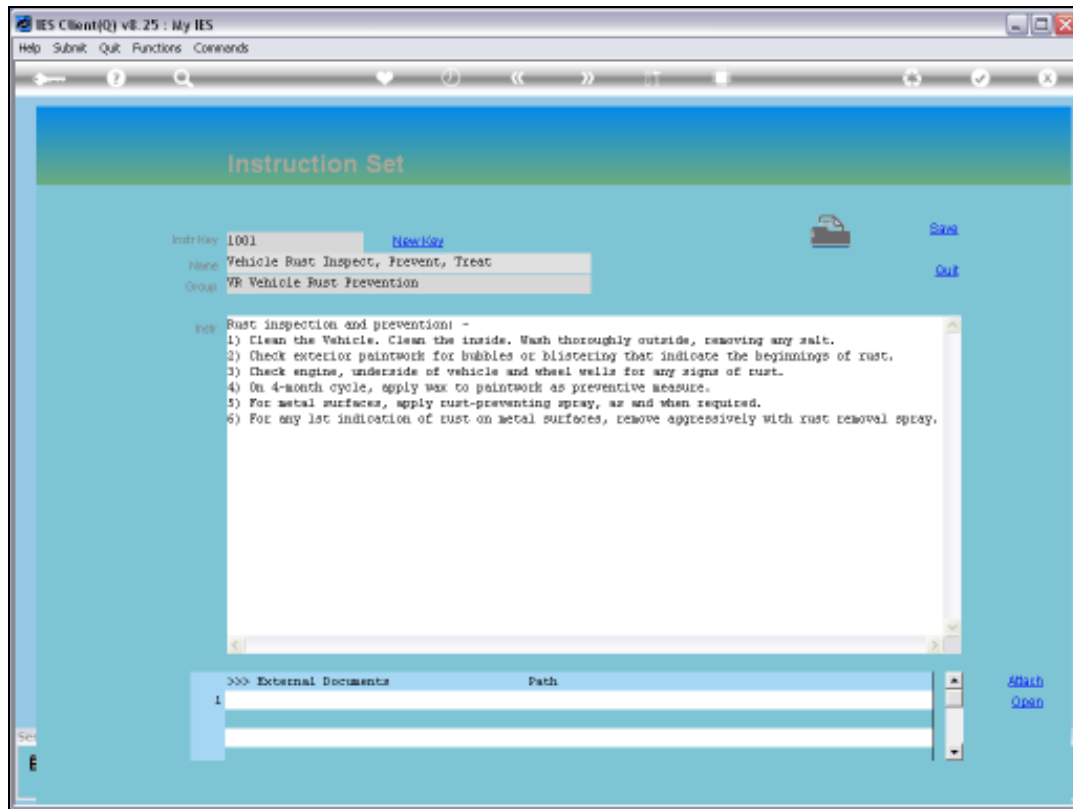
Slide 2
Slide notes:



Slide 3
Slide notes:

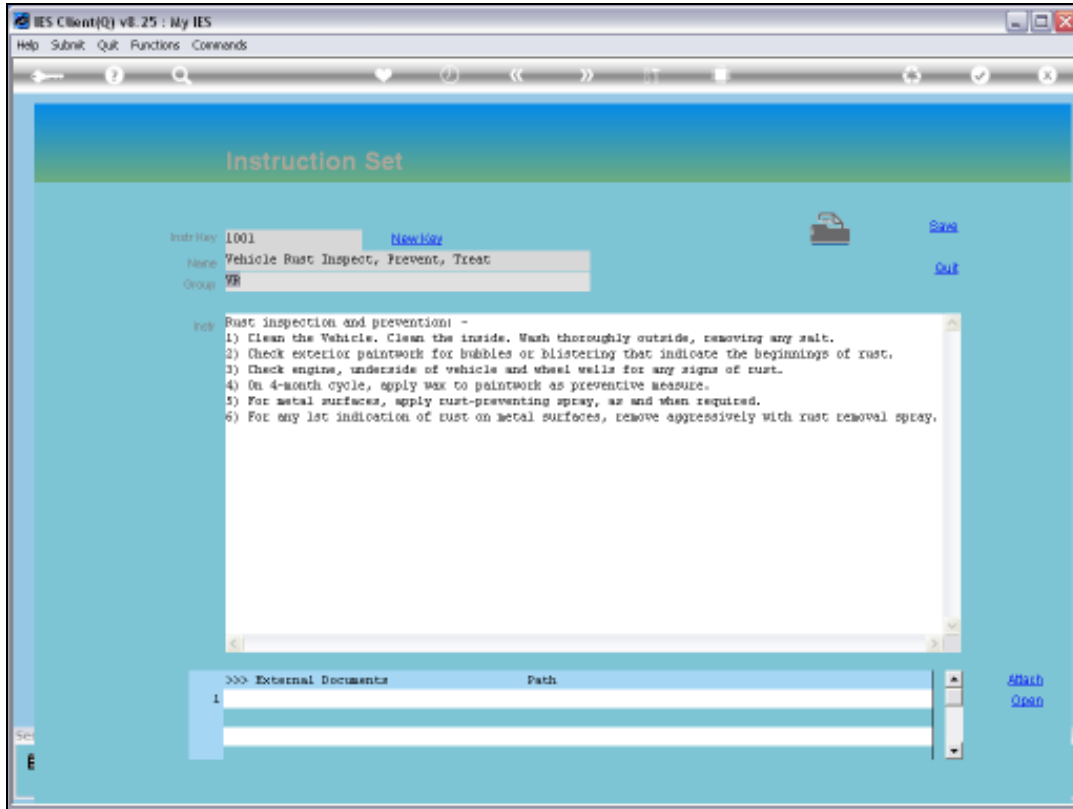


Slide 4
Slide notes:

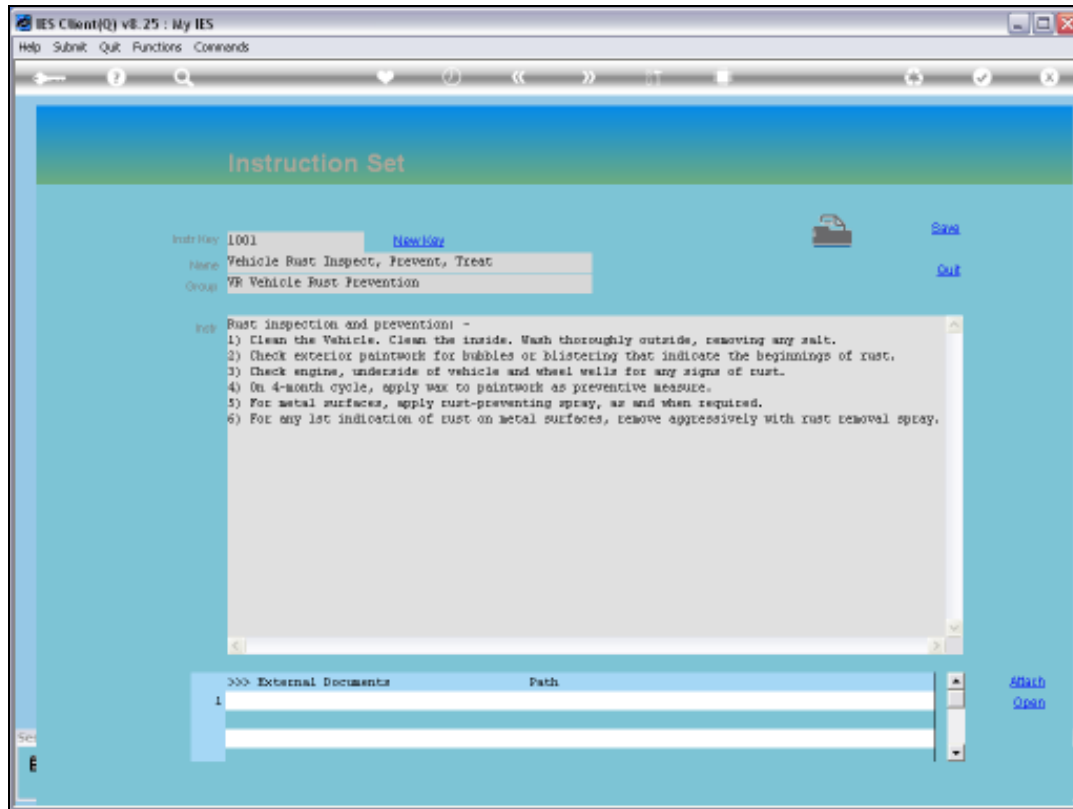


Slide 5

Slide notes: A Procedure is defined with a Key, a Name, association with a Group of Procedures, and of course has the actual Instructions.

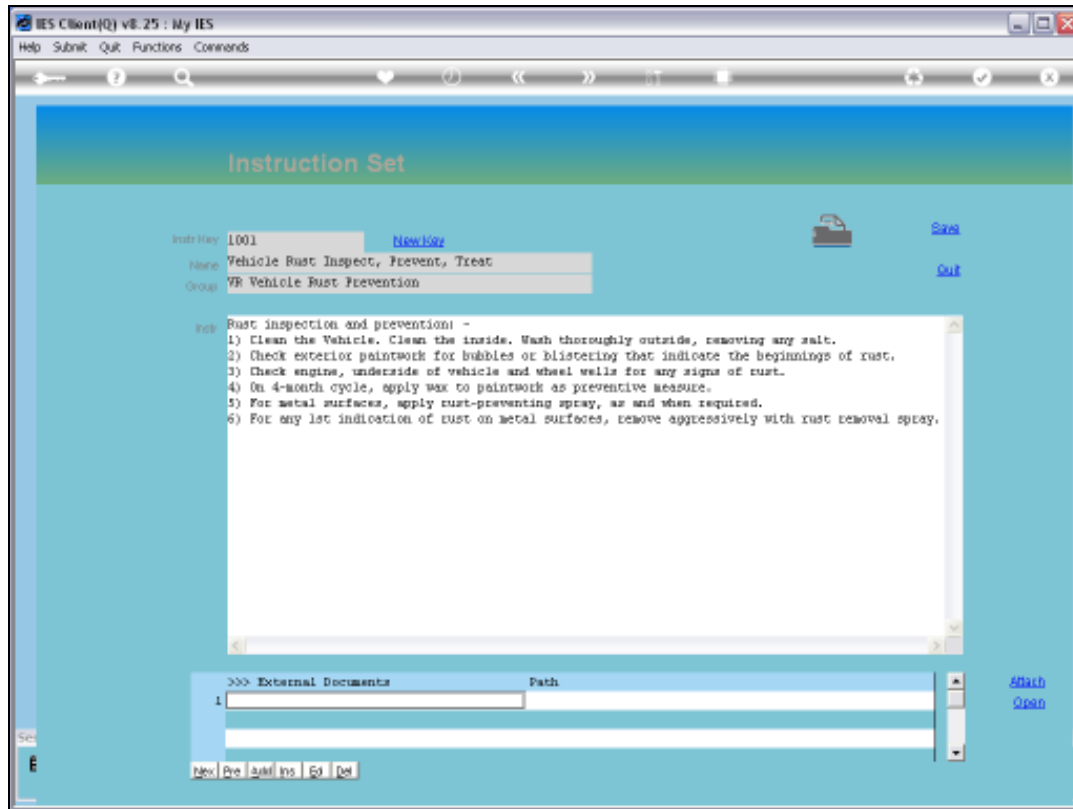


Slide 6
Slide notes:



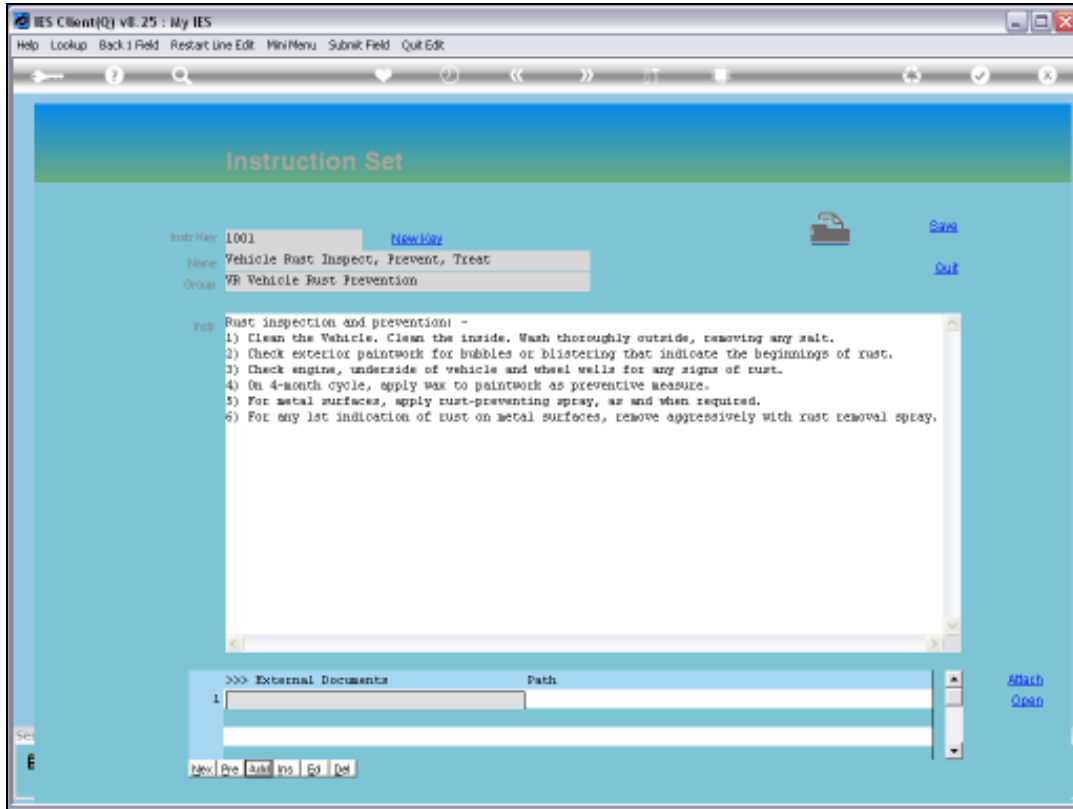
Slide 7

Slide notes: Sometimes plain text may not be sufficient, or we simply wish to attach 1 or more external Documents that contain the instructions. And we can do so.

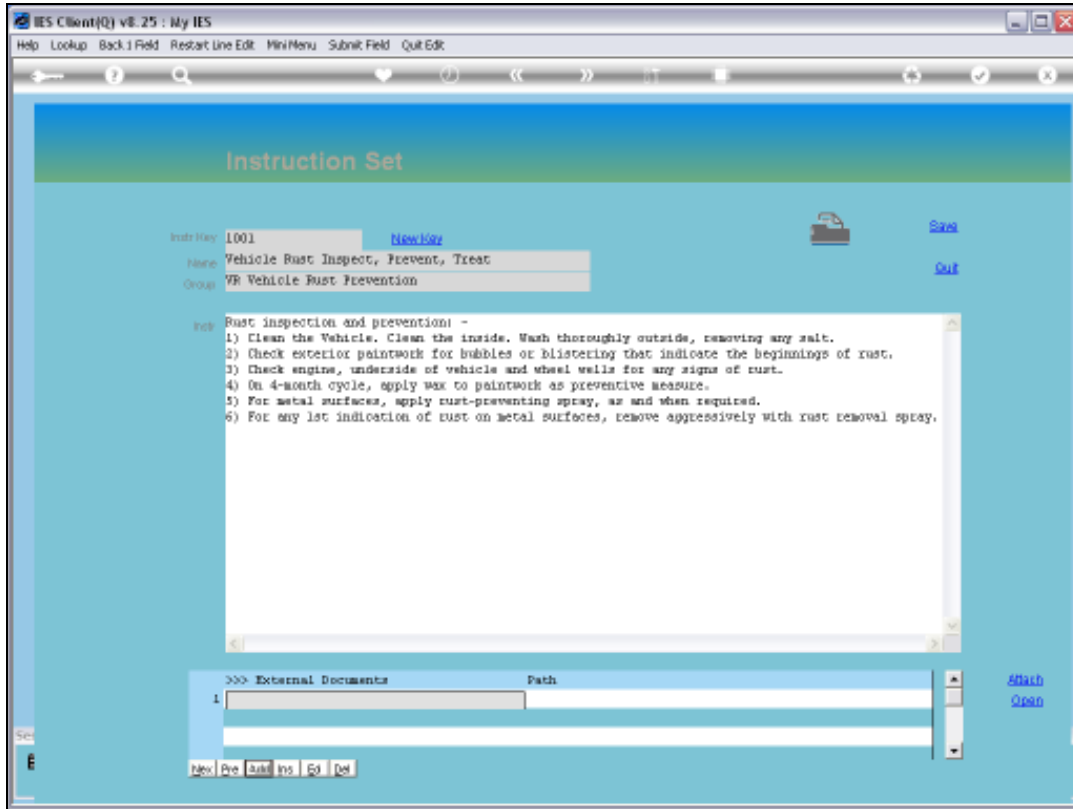


Slide 8

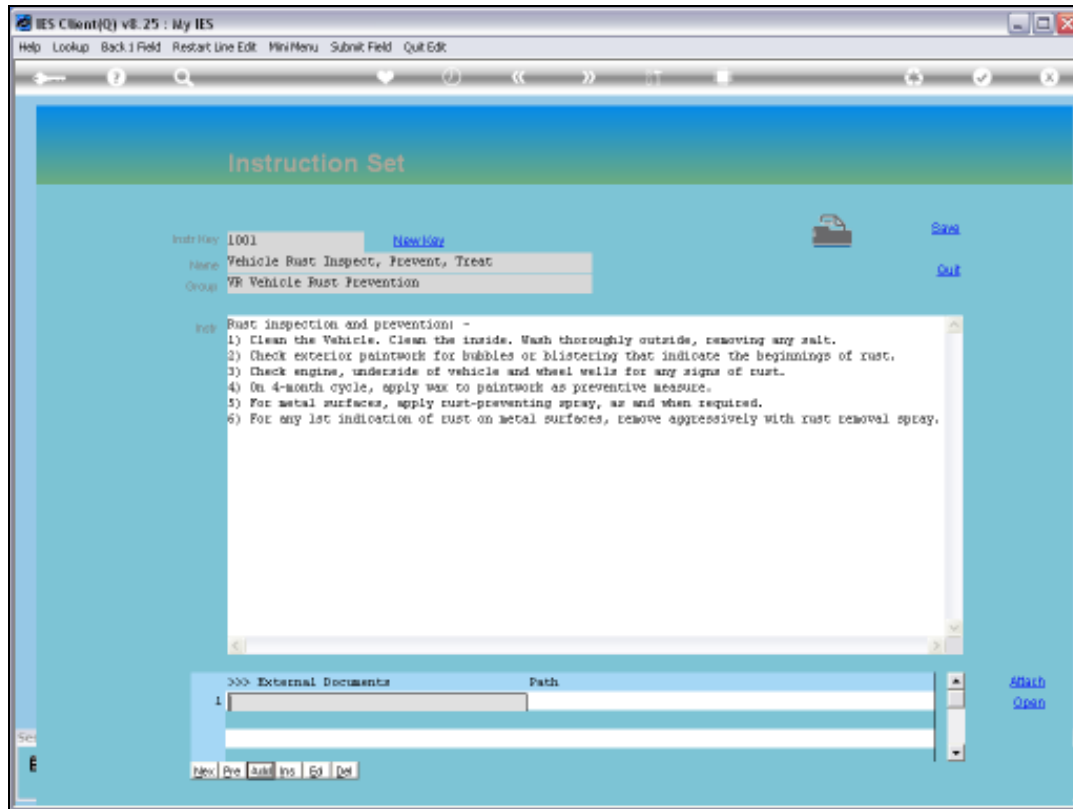
Slide notes: First, we add a Document Name, which should be meaningful if multiple Documents are attached.



Slide 9
Slide notes:

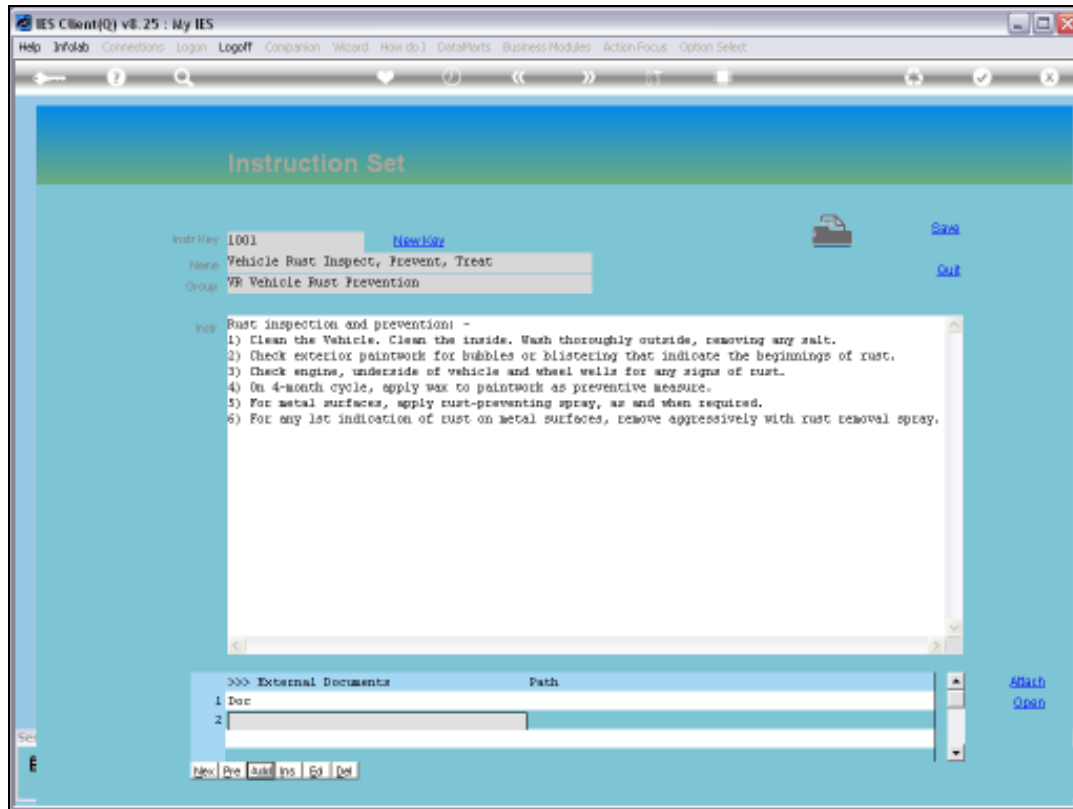


Slide 10
Slide notes:



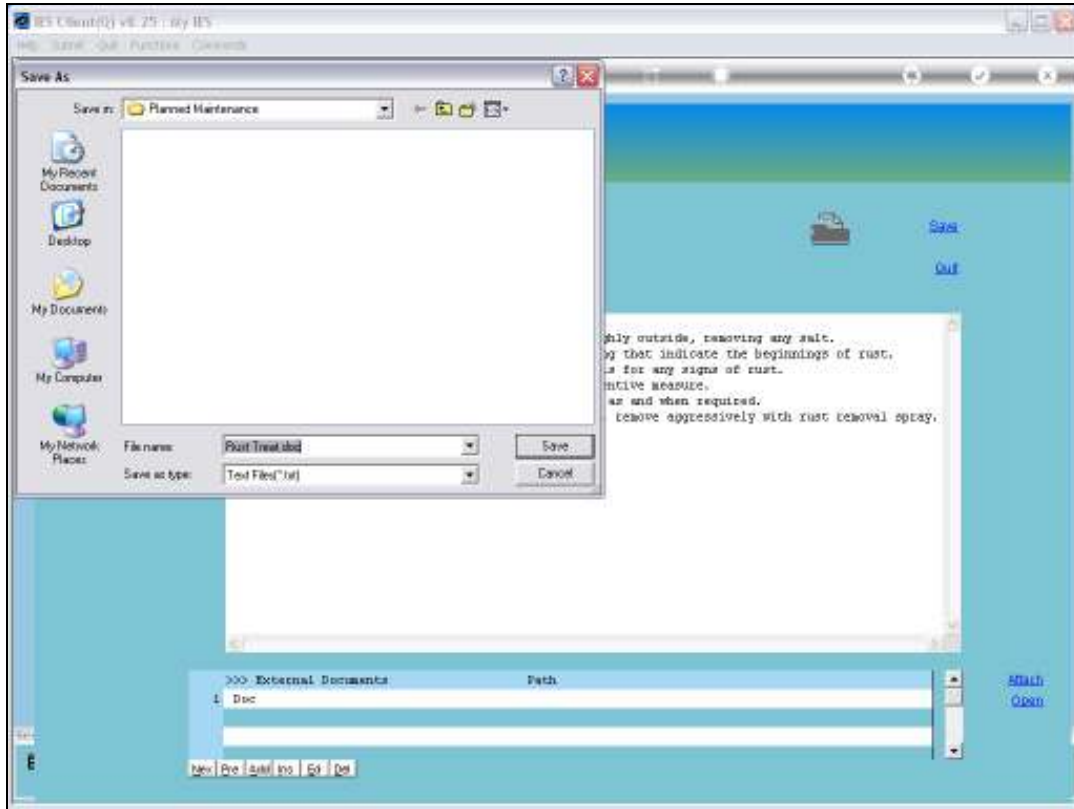
Slide 11

Slide notes:



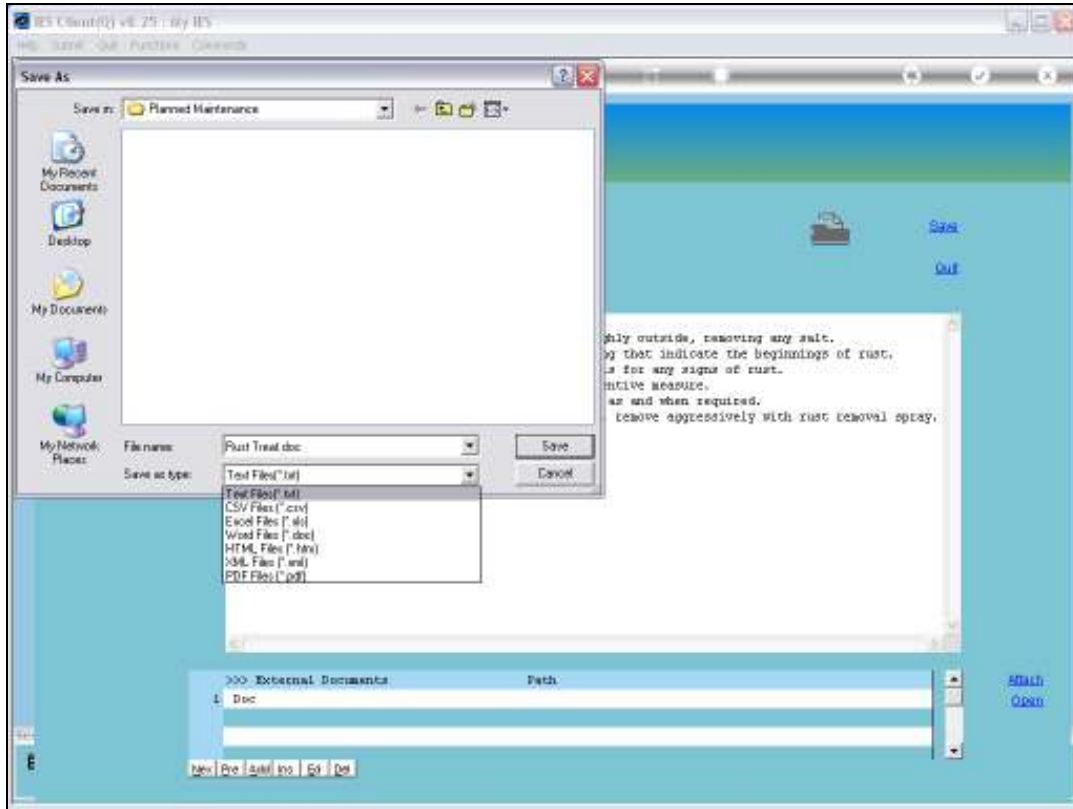
Slide 12

Slide notes: Then we just dbl-click the PATH cell for that Name, to attach a Document from a Folder on the network. It is recommended that these Maintenance Documents all be kept in the same Folder.



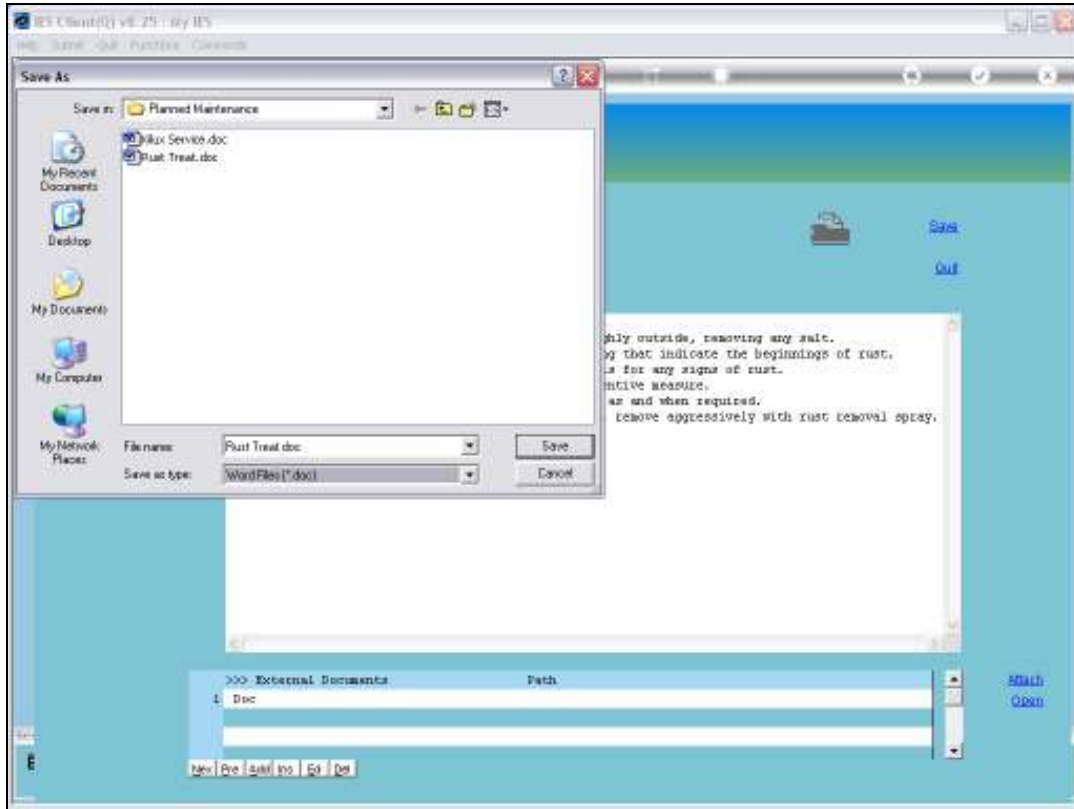
Slide 13

Slide notes:

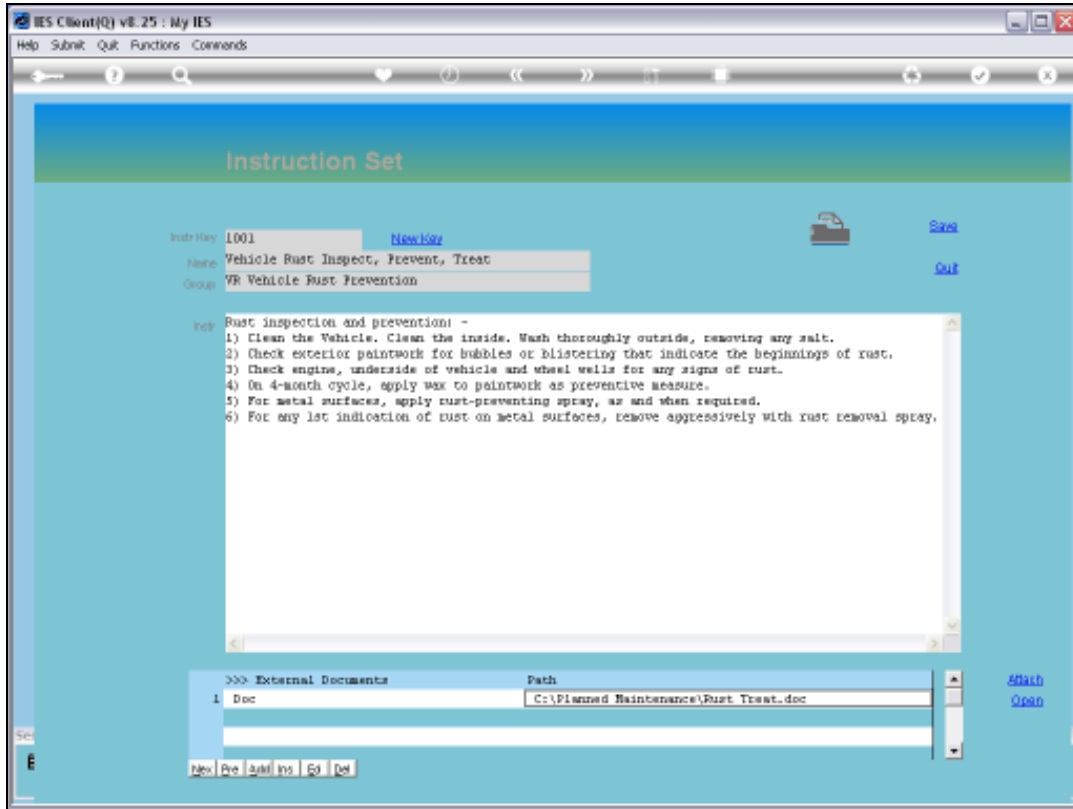


Slide 14

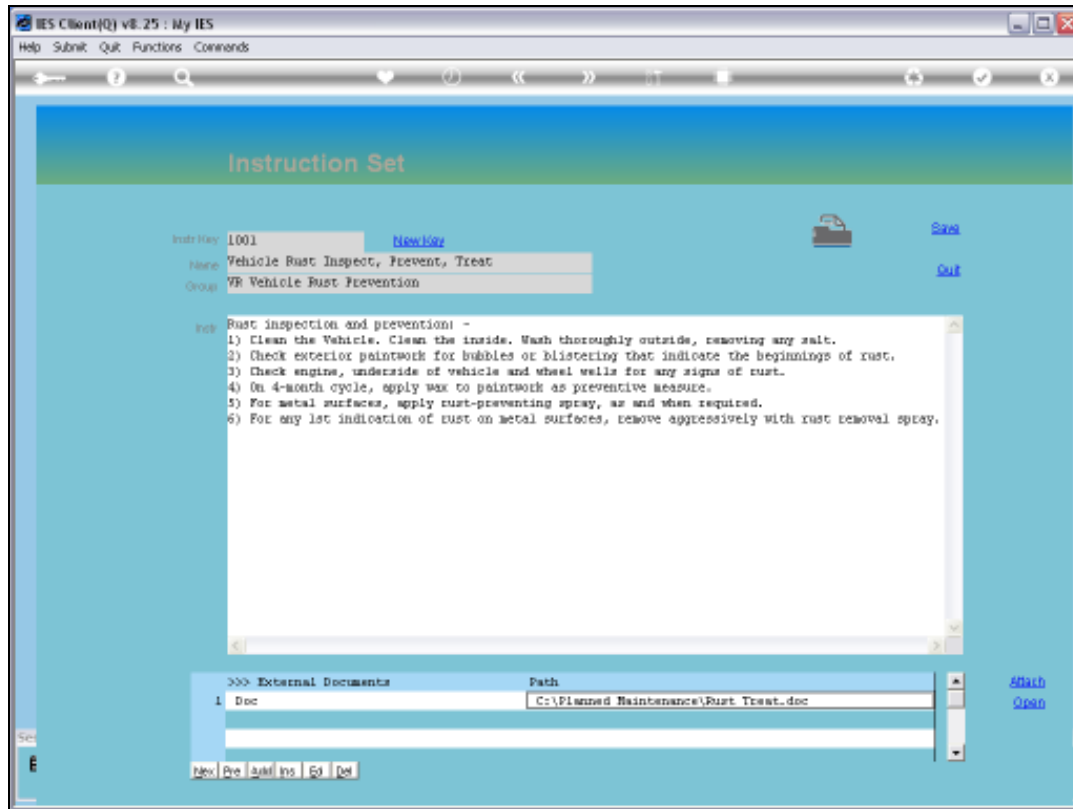
Slide notes:



Slide 15
Slide notes:

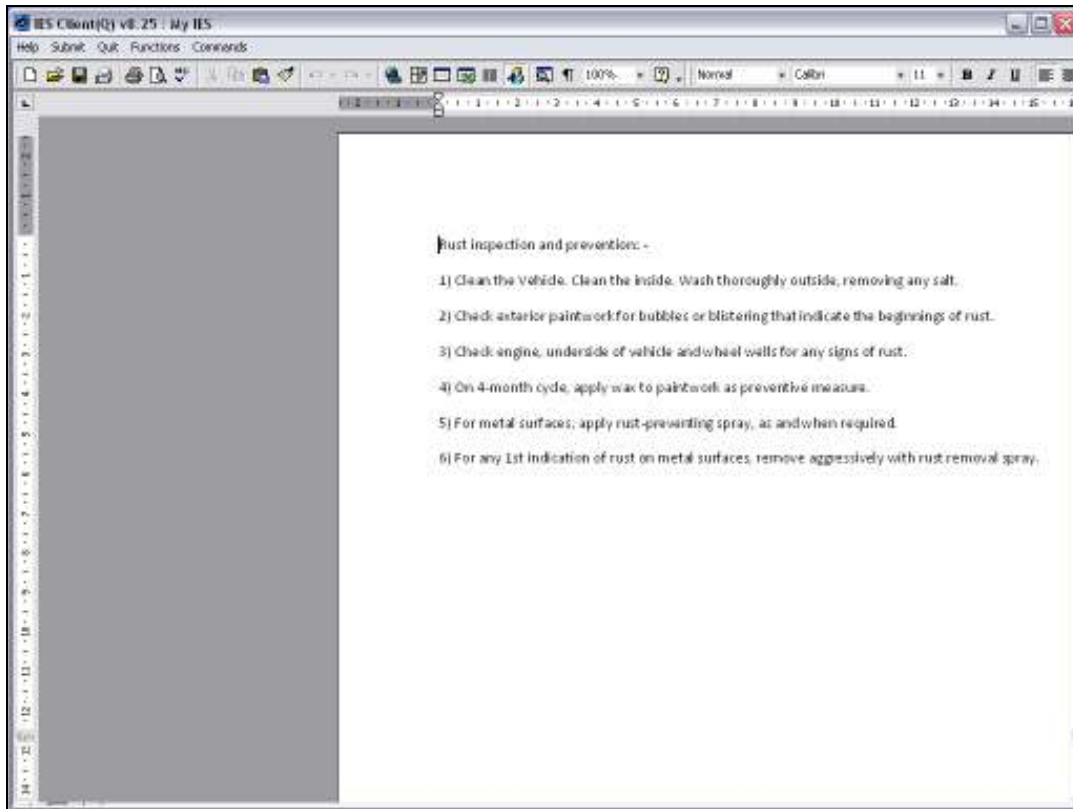


Slide 16
Slide notes:



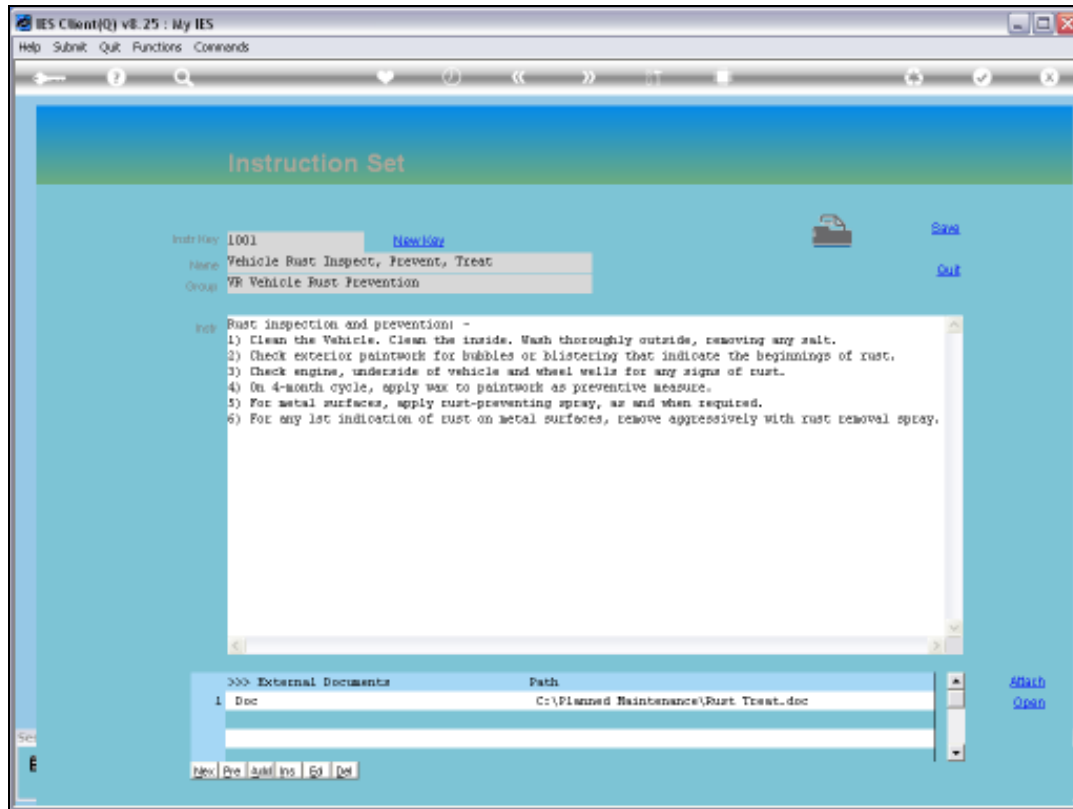
Slide 17

Slide notes: When an attachment is shown, and we dbl-click on it, then that Document is opened for us.



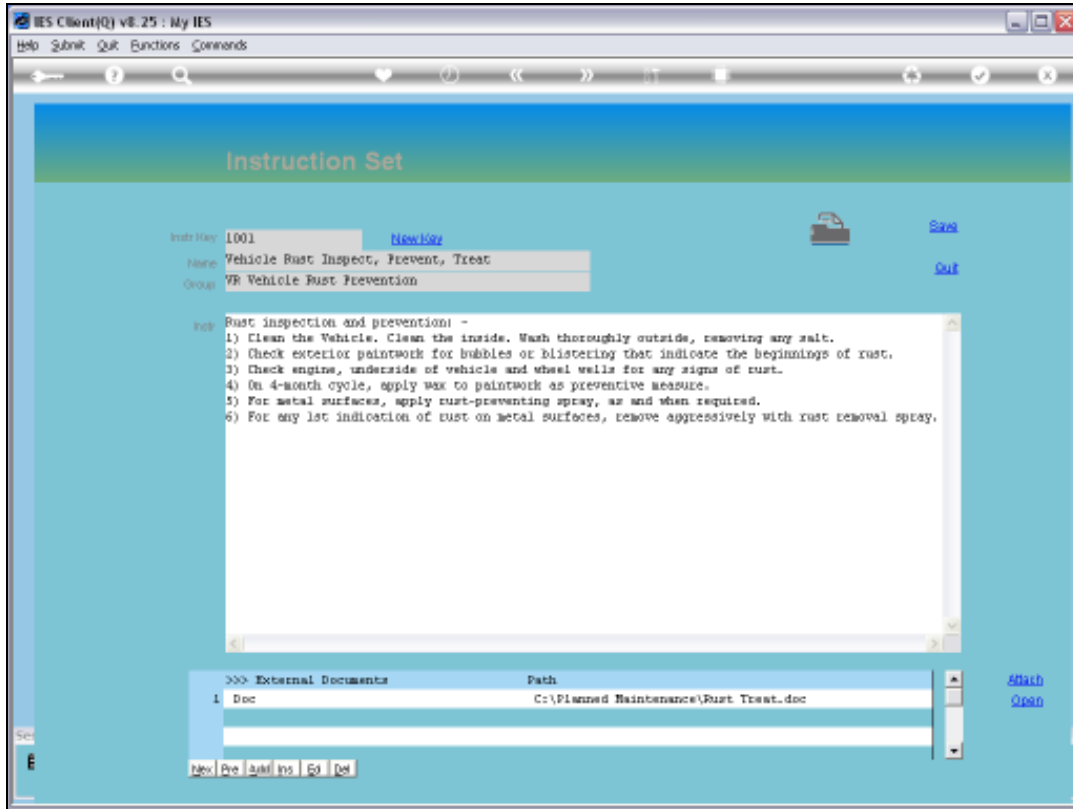
Slide 18

Slide notes: So it is useful and also easy to have attached instructions in an external Document, outside the system.



Slide 19

Slide notes: The Procedure may also be printed.



Slide 20
Slide notes: