
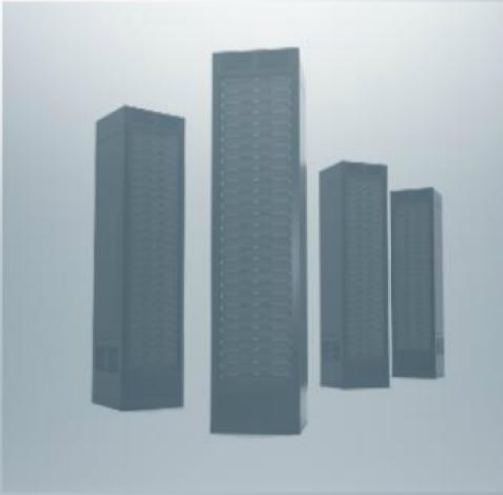


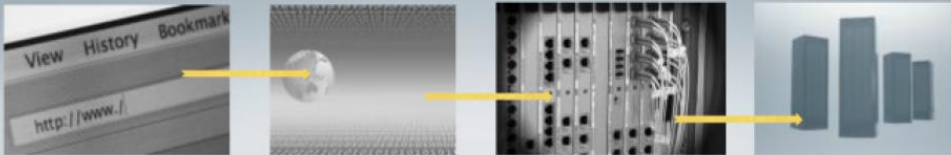
iesCloud is an IES service that is offered somewhere in the cloud, but there is a nice twist to this one: 'somewhere' in the cloud can also be 'in the Customer Office' !



Slide 1

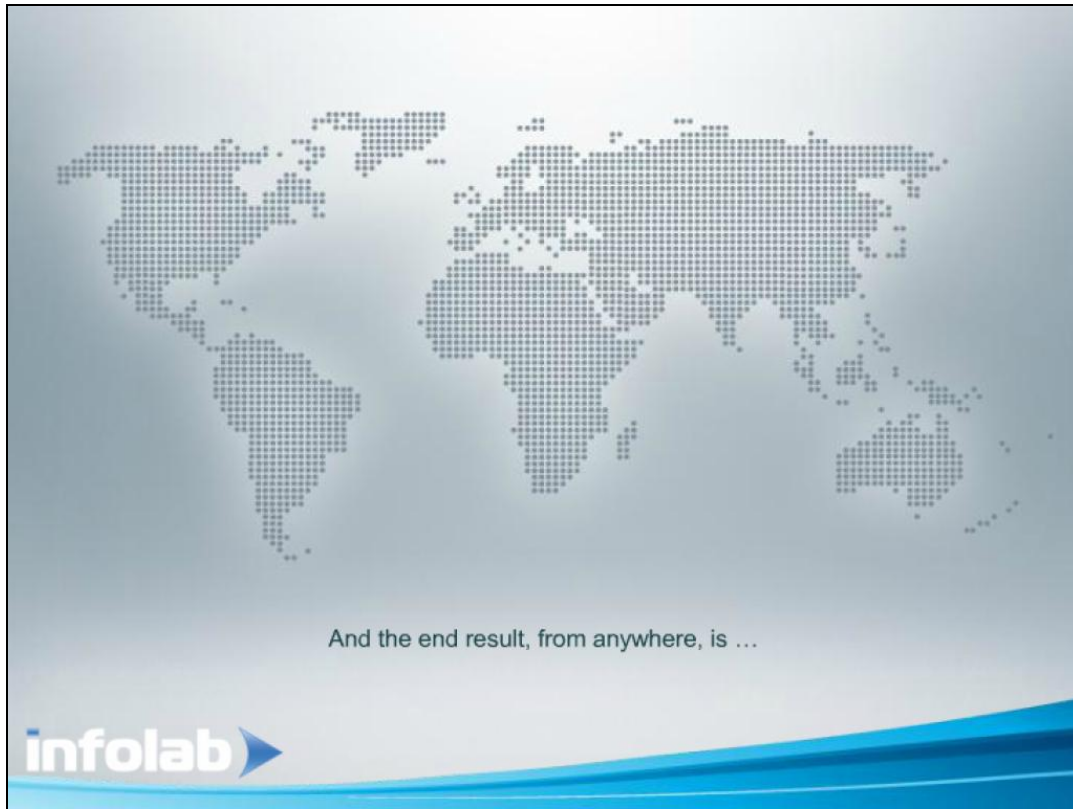
Slide notes: The IES Cloud service is a flexible offering that is compatible with having IES in the cloud or having it in your office, i.e. Cloud in your Office.

The User will only need to use a browser enabled device, connecting anywhere to the internet (or local intranet), to reach the iesCloud service



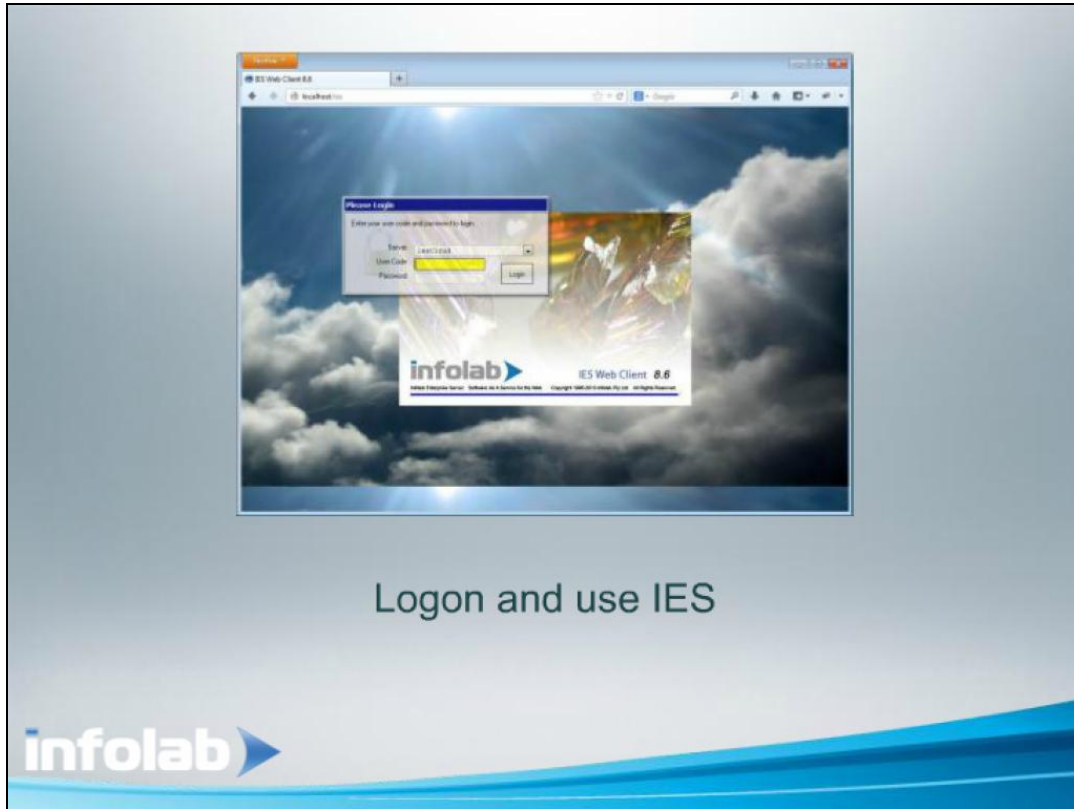
Slide 2

Slide notes: From the User side, the IES service in the cloud is accessed, as expected, with a browser enabled device, and nothing else required, i.e. just use the browser.



Slide 4

Slide notes: From anywhere, as long as there is a connection, the User may connect.



Slide 3

Slide notes: On the appropriate URL, the User will be presented with a logon option to enter and use IES.