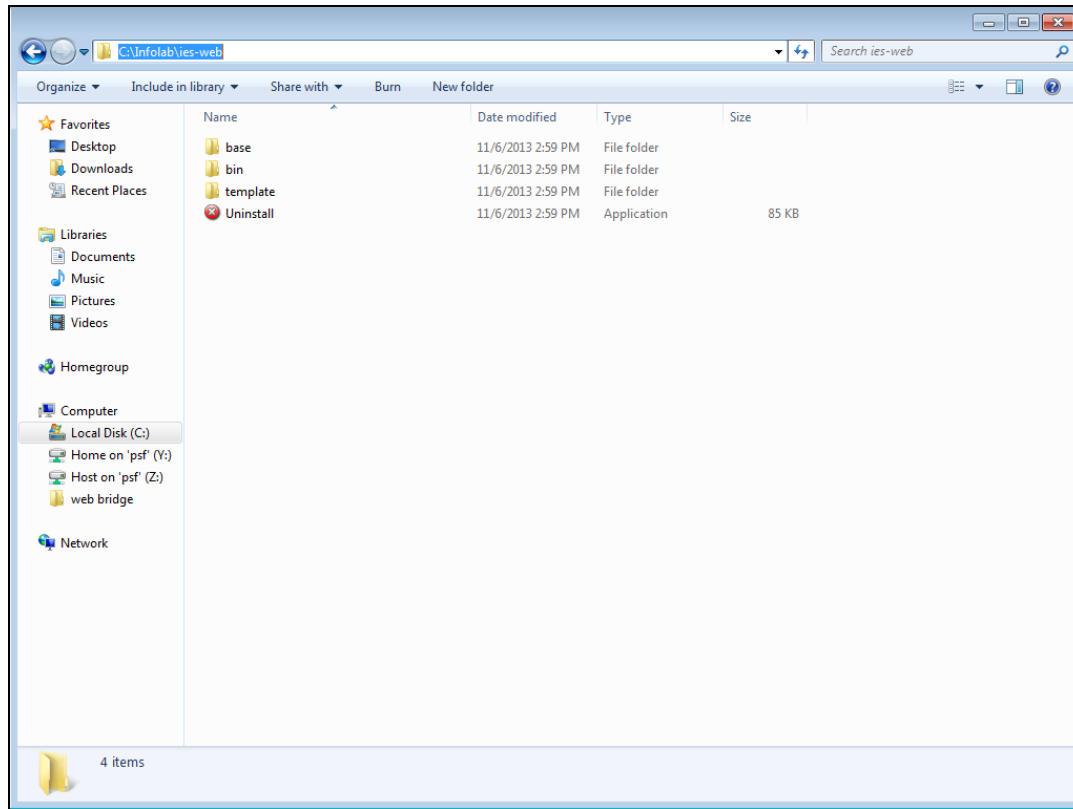


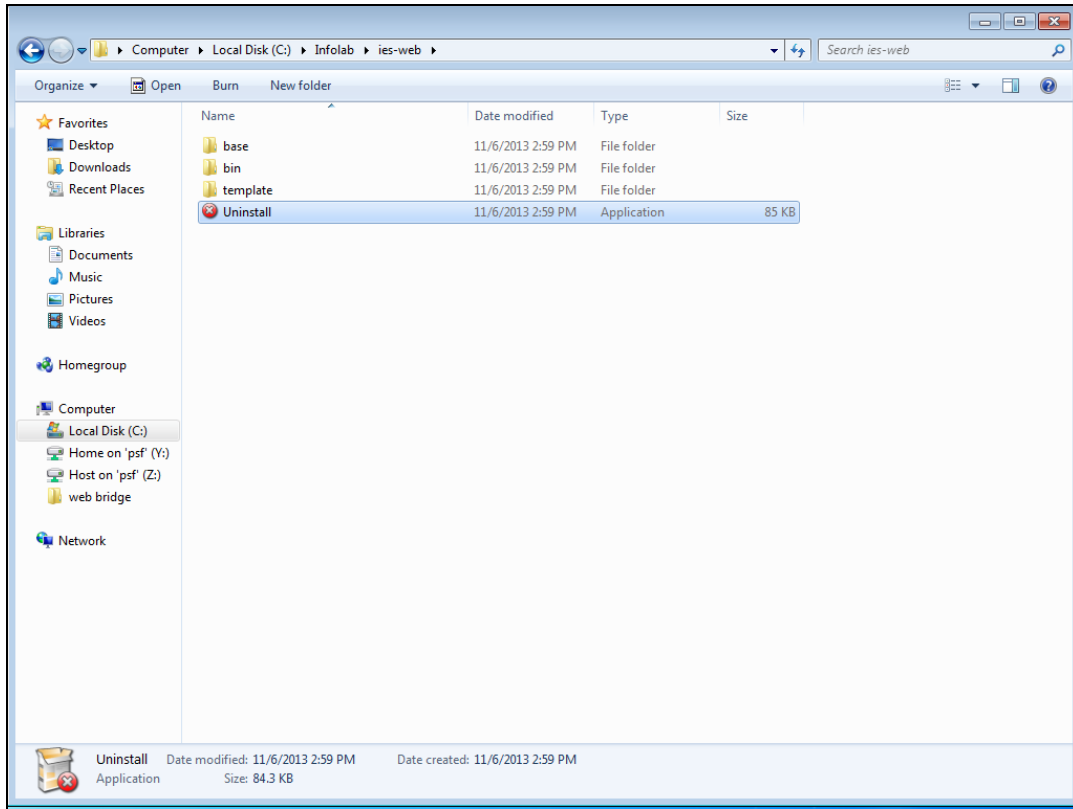
Slide 1

Slide notes: It is recommended to uninstall the IES Cloud service before installing a new version. Note the folder to navigate to, on the current install path as shown here.

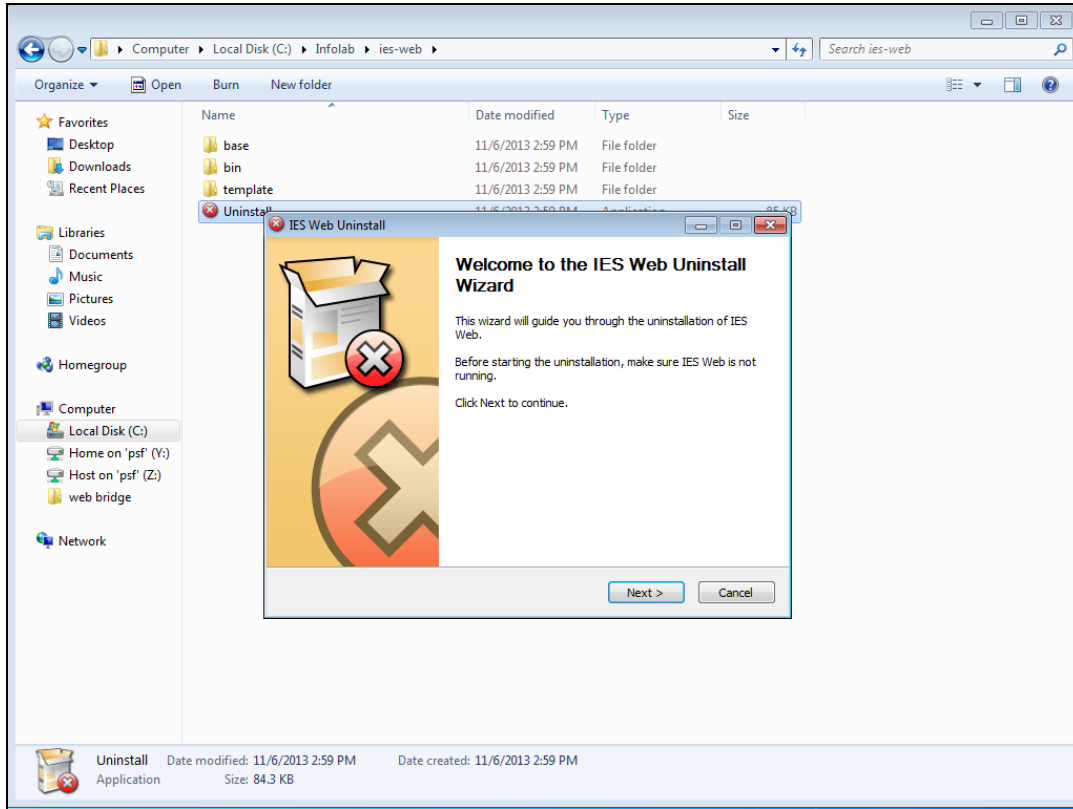


Slide 2

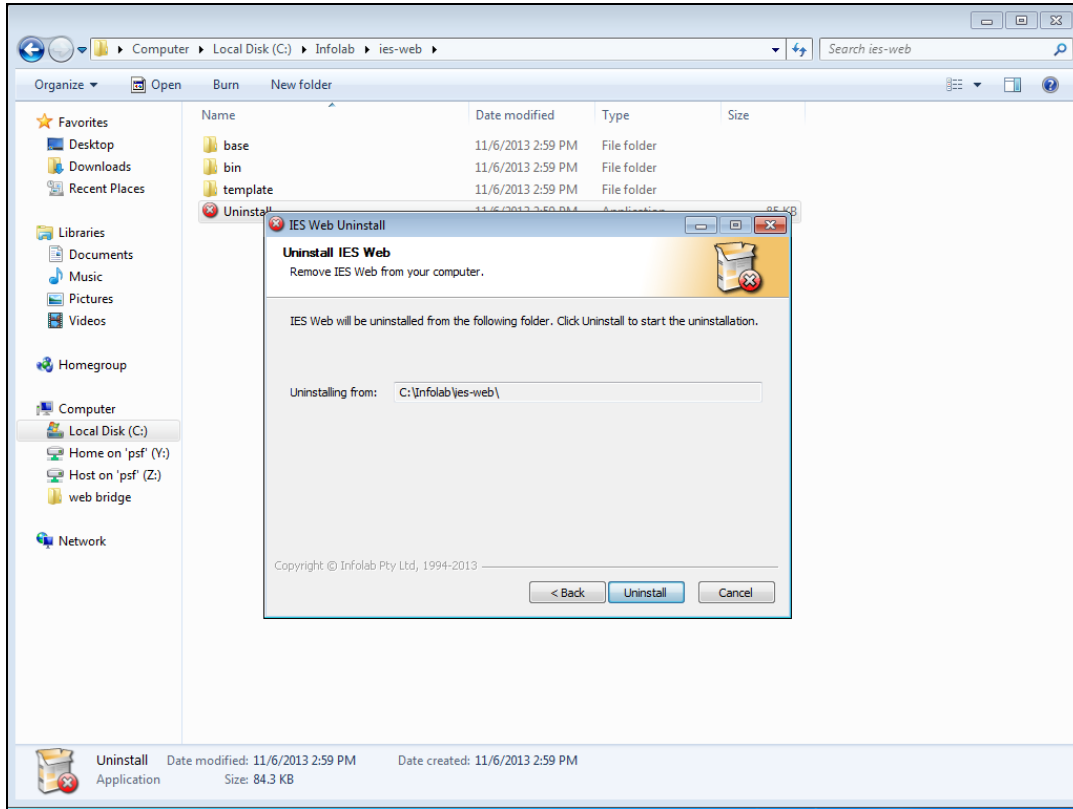
Slide notes: Please ensure that no Users are currently using the service, and then choose "uninstall".



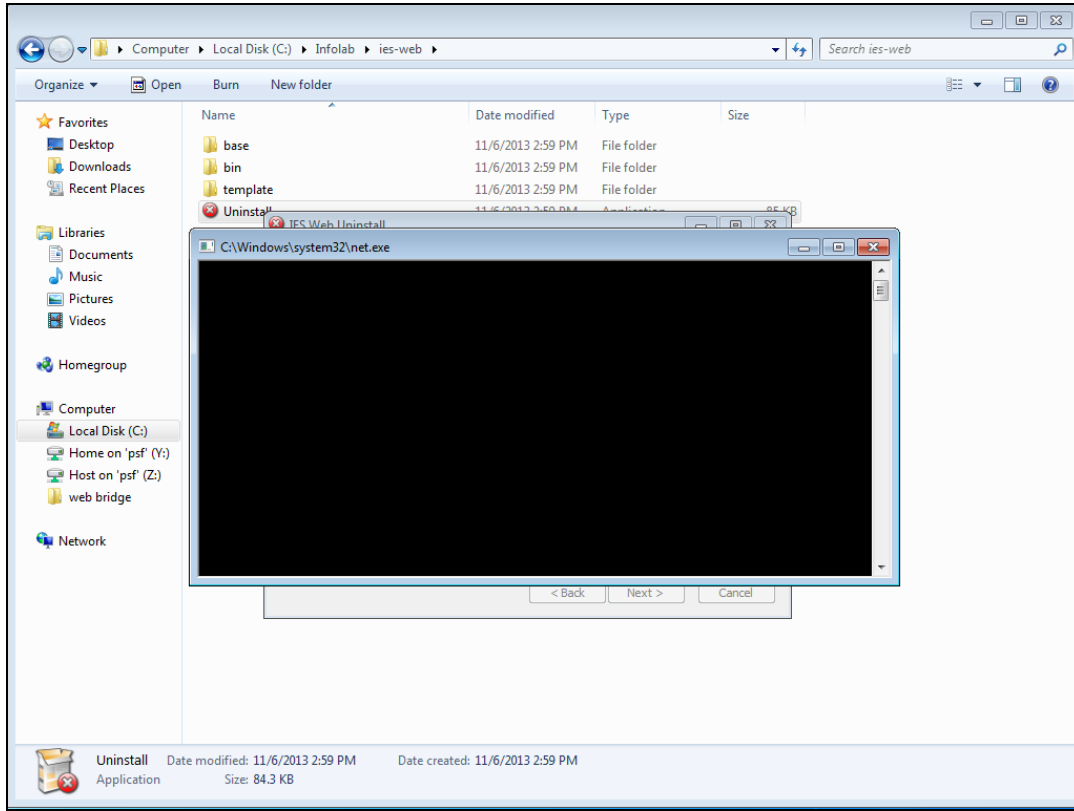
Slide 3
Slide notes:



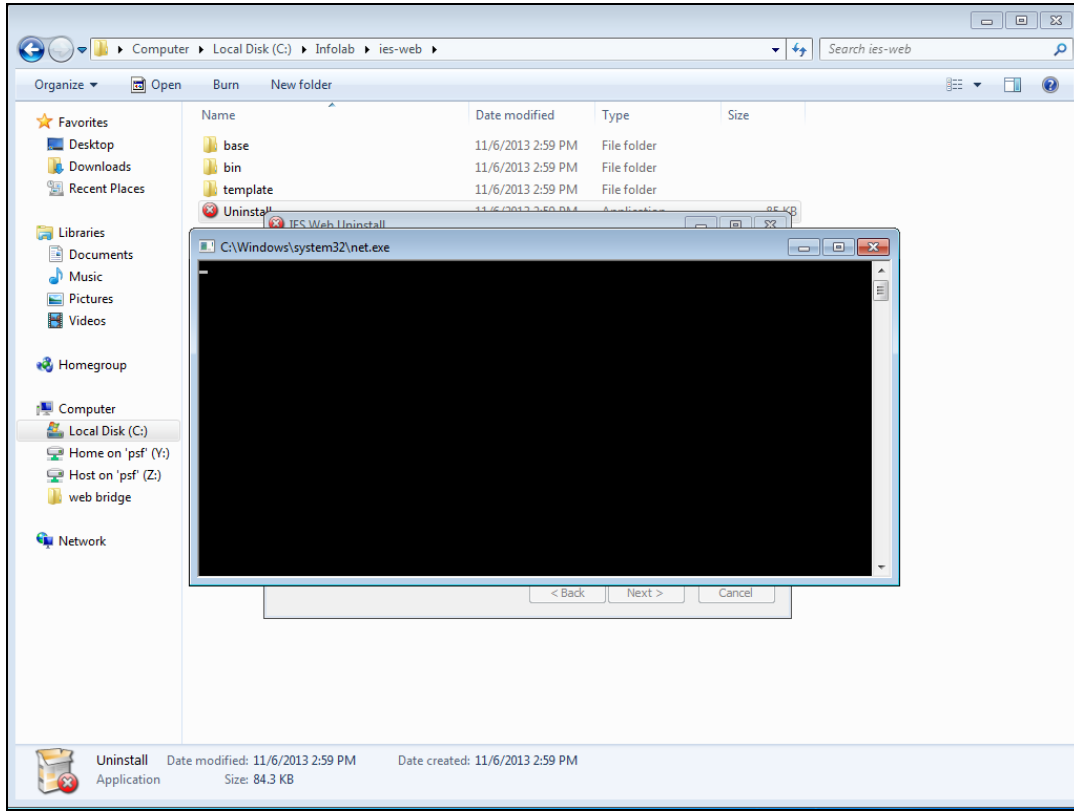
Slide 4
Slide notes:



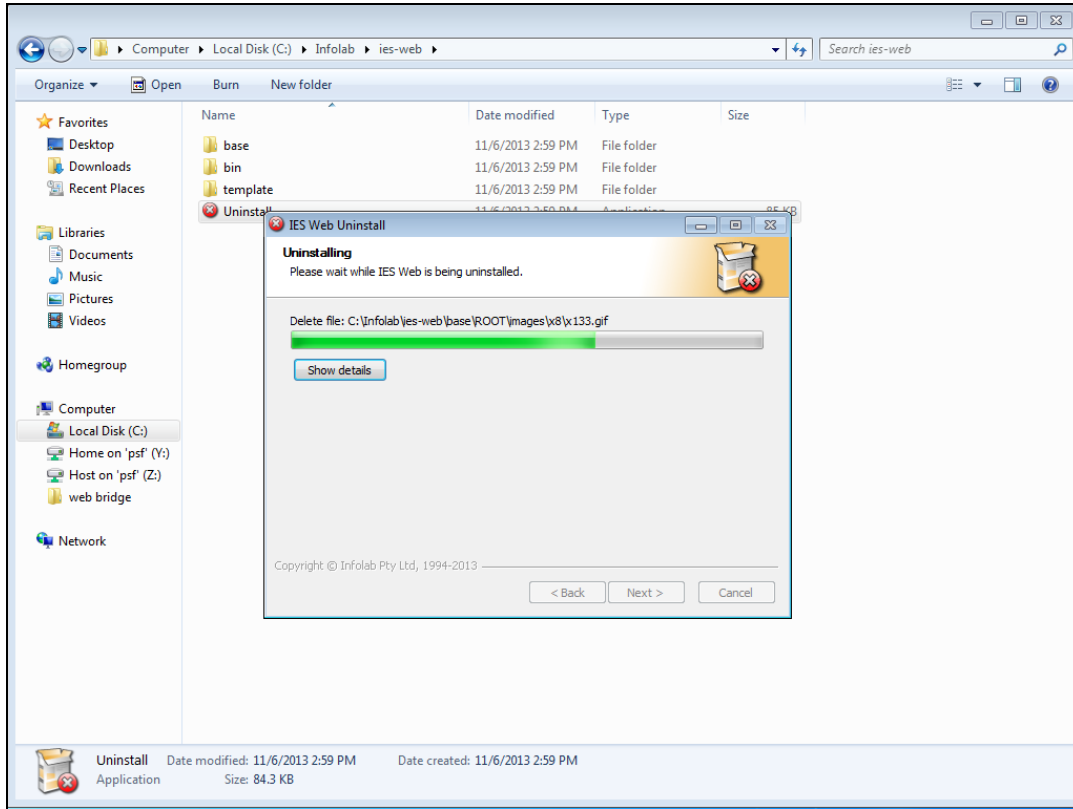
Slide 5
Slide notes:



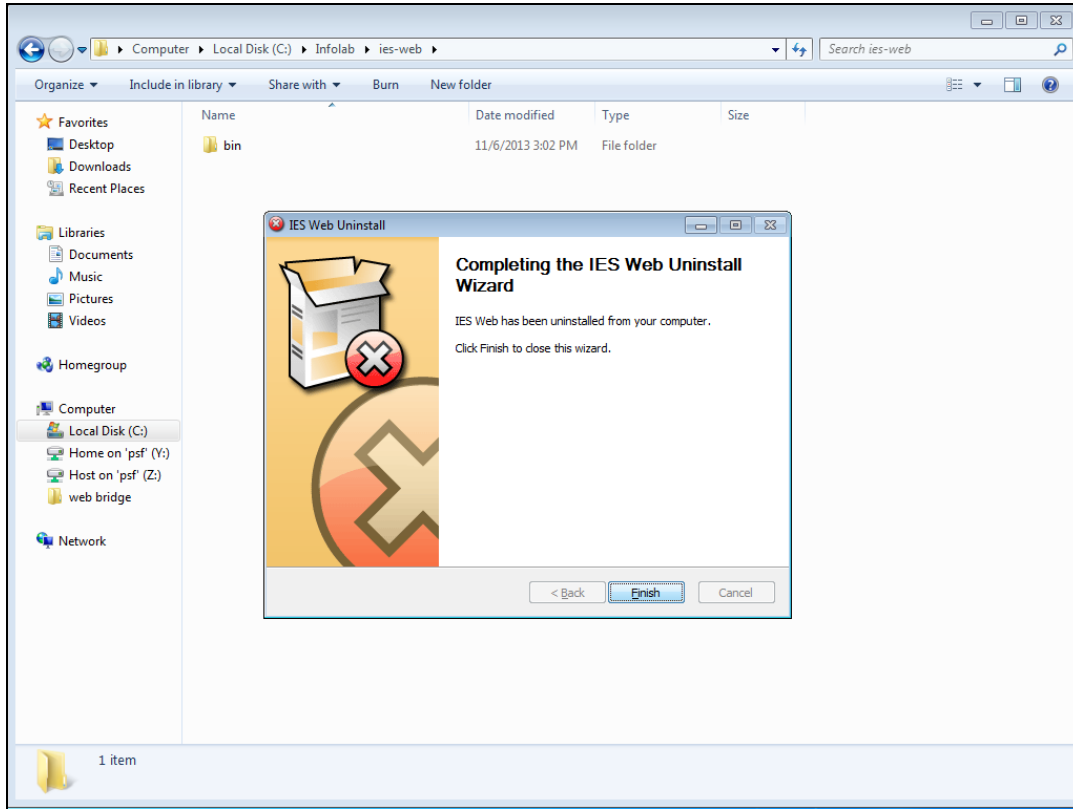
Slide 6
Slide notes:



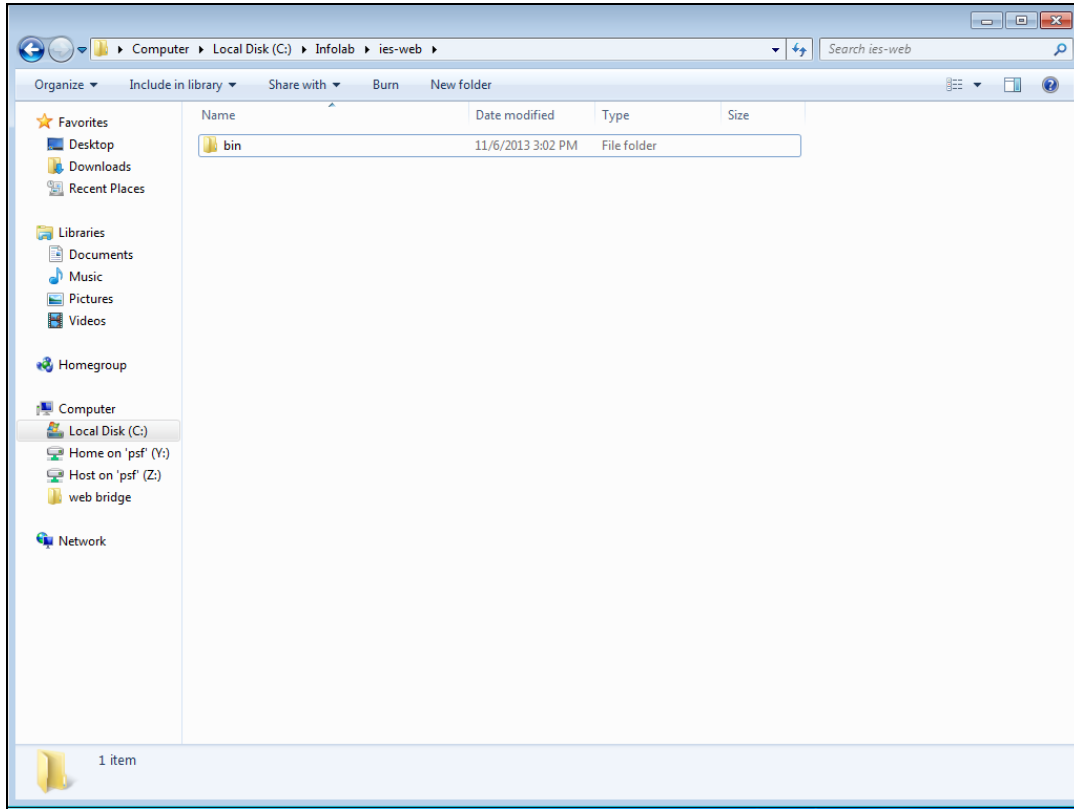
Slide 7
Slide notes:



Slide 8
Slide notes:



Slide 9
Slide notes:



Slide 10
Slide notes: