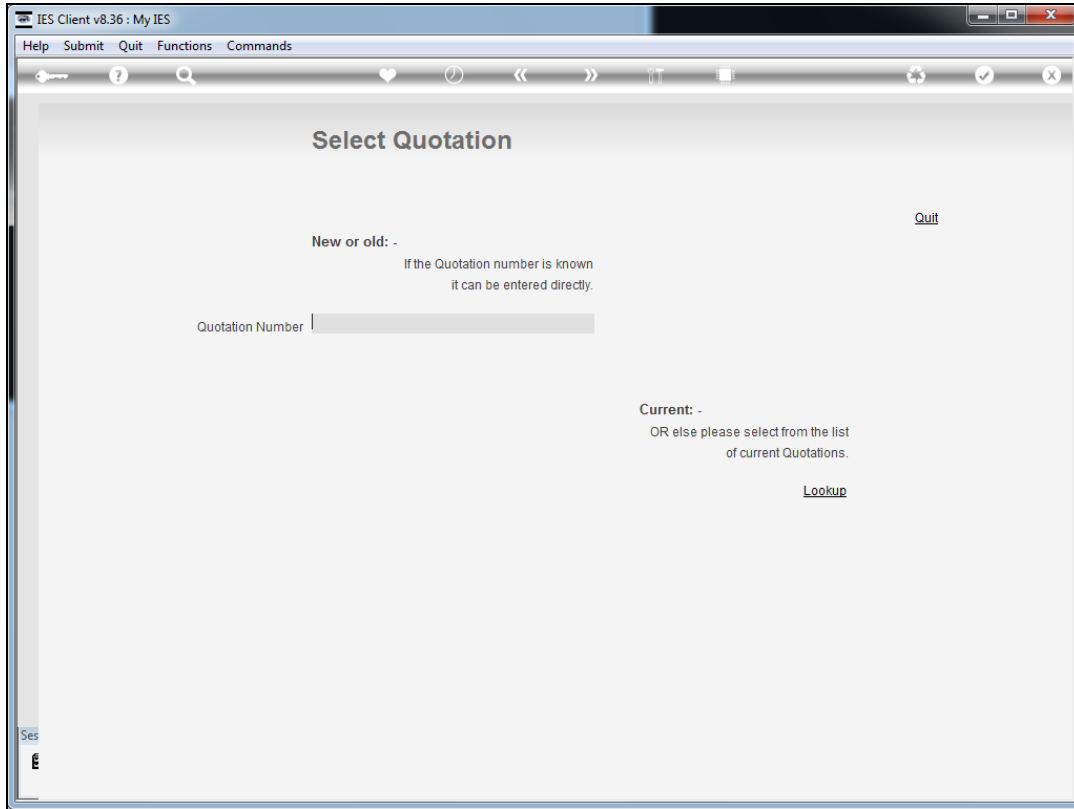
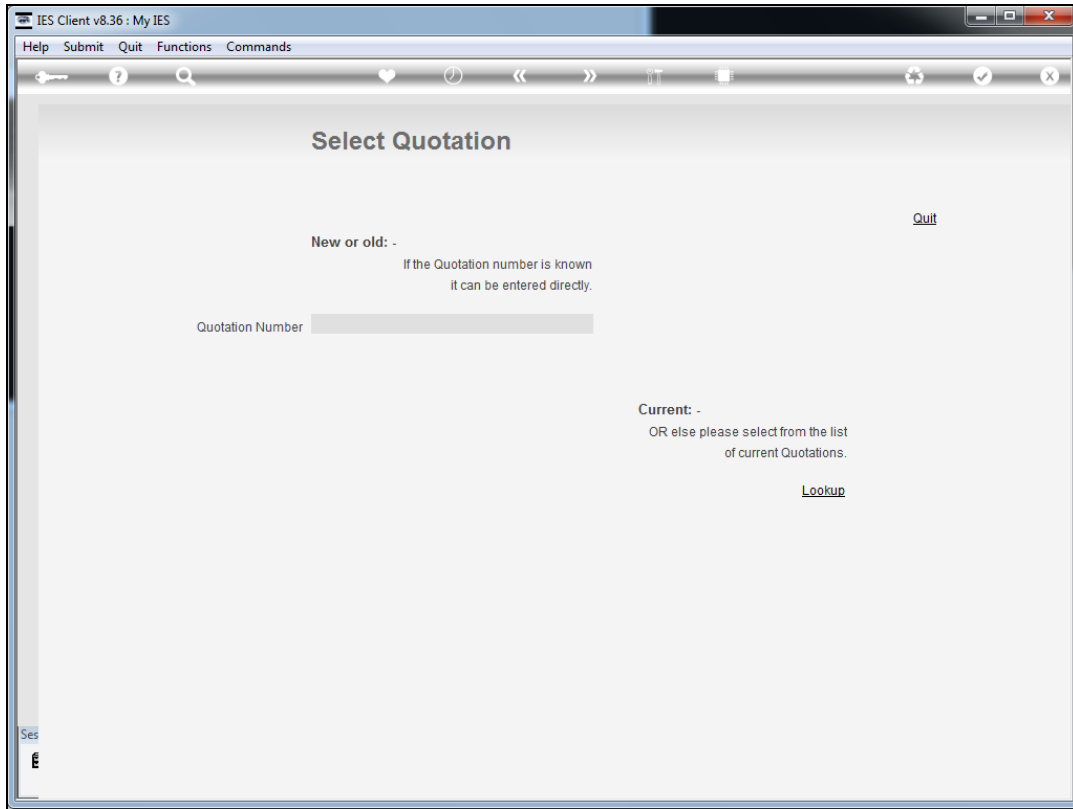


Slide 1

Slide notes: Any quotation, prior or present, can be entered from the option named 'Any Quotation Number'.

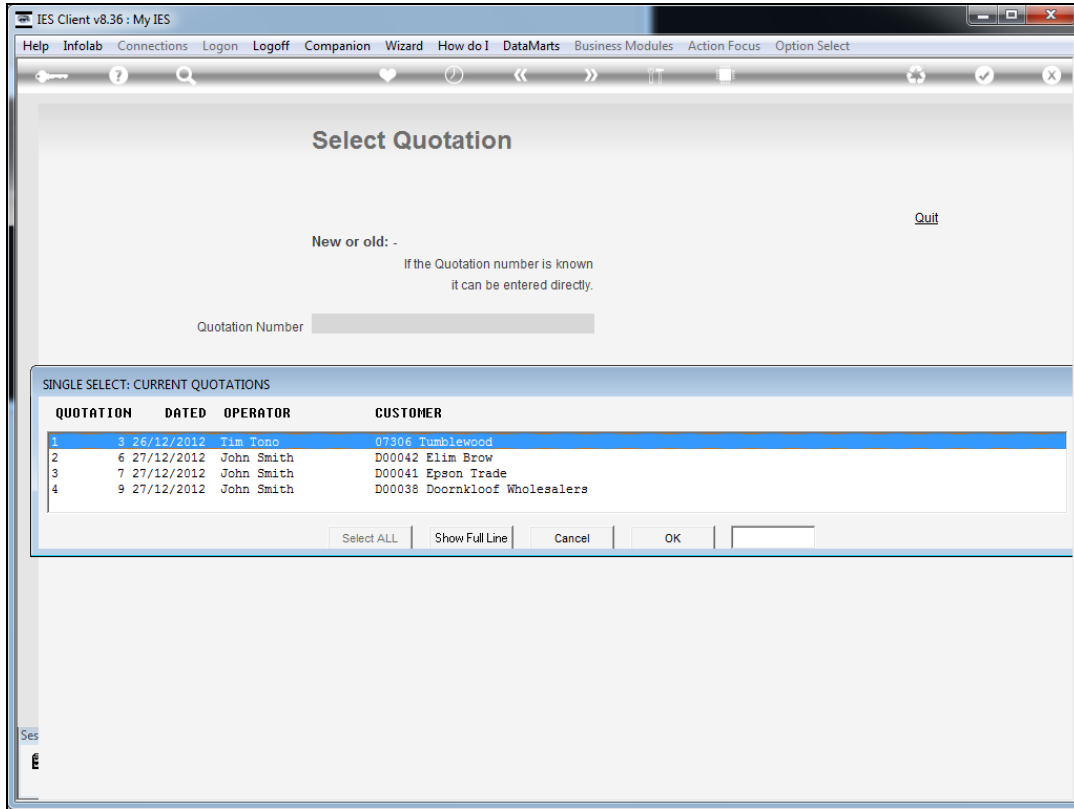


Slide 2  
Slide notes:

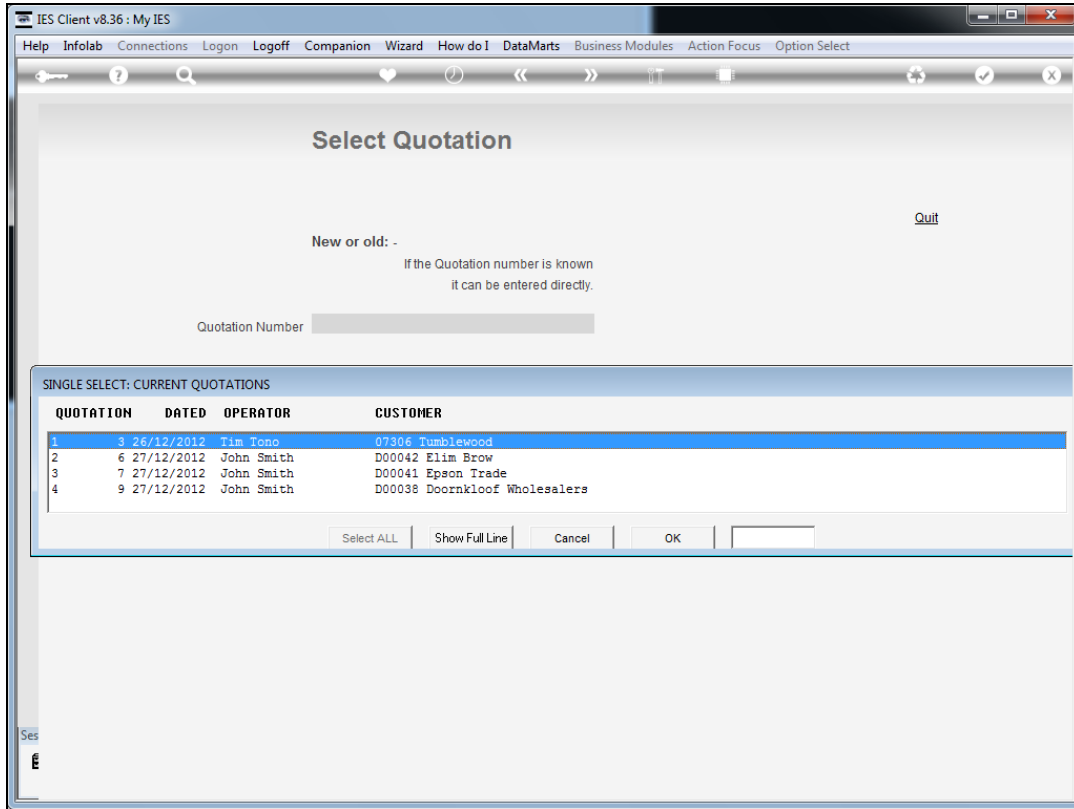


Slide 3

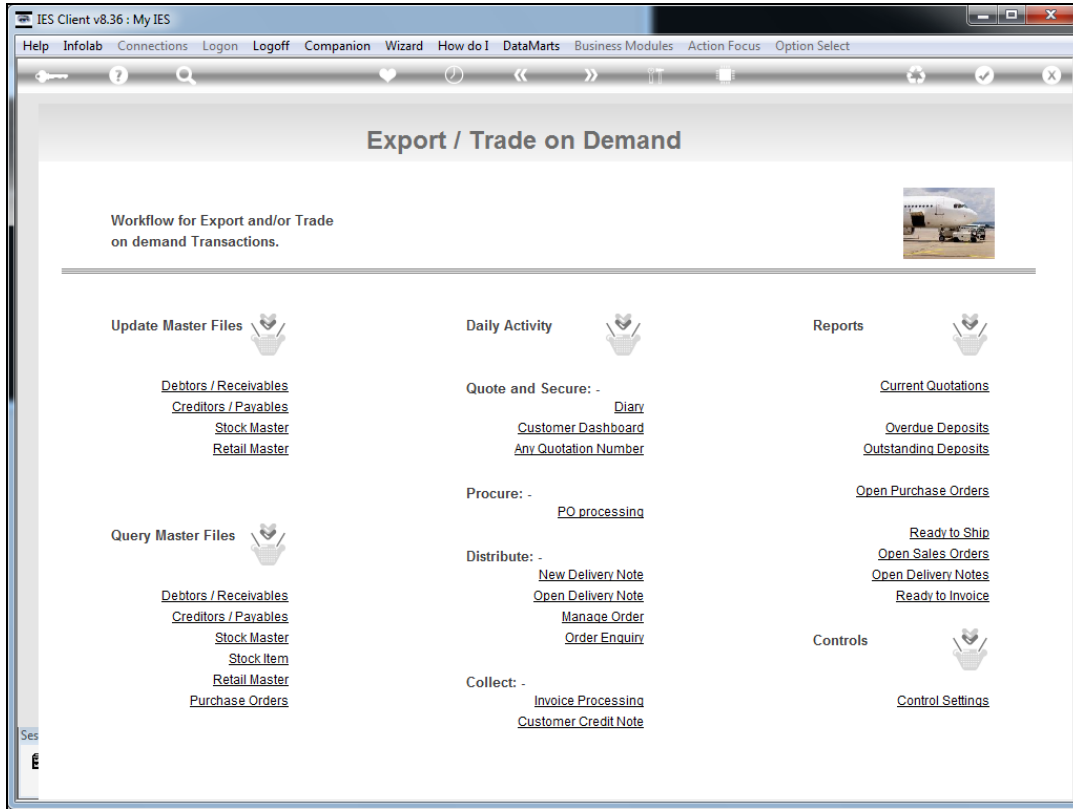
Slide notes: For current Quotations, we can use the lookup to select an open Quotation.



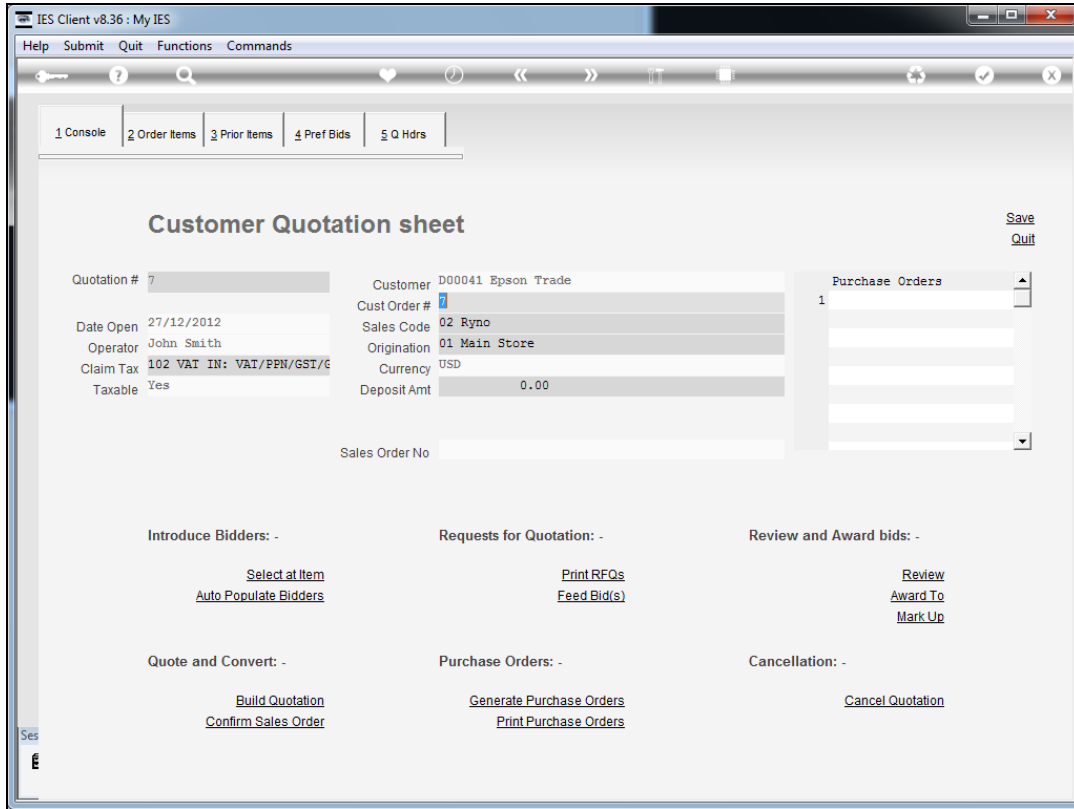
Slide 4  
Slide notes:



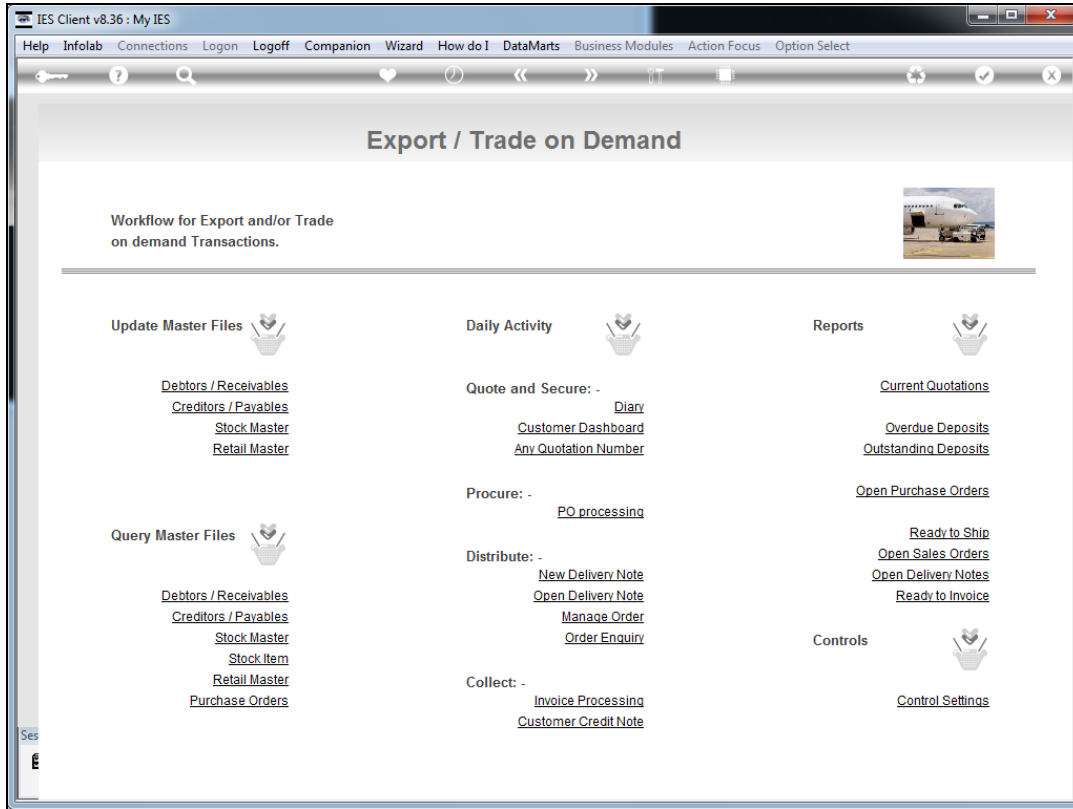
Slide 5  
Slide notes:



Slide 6  
Slide notes:

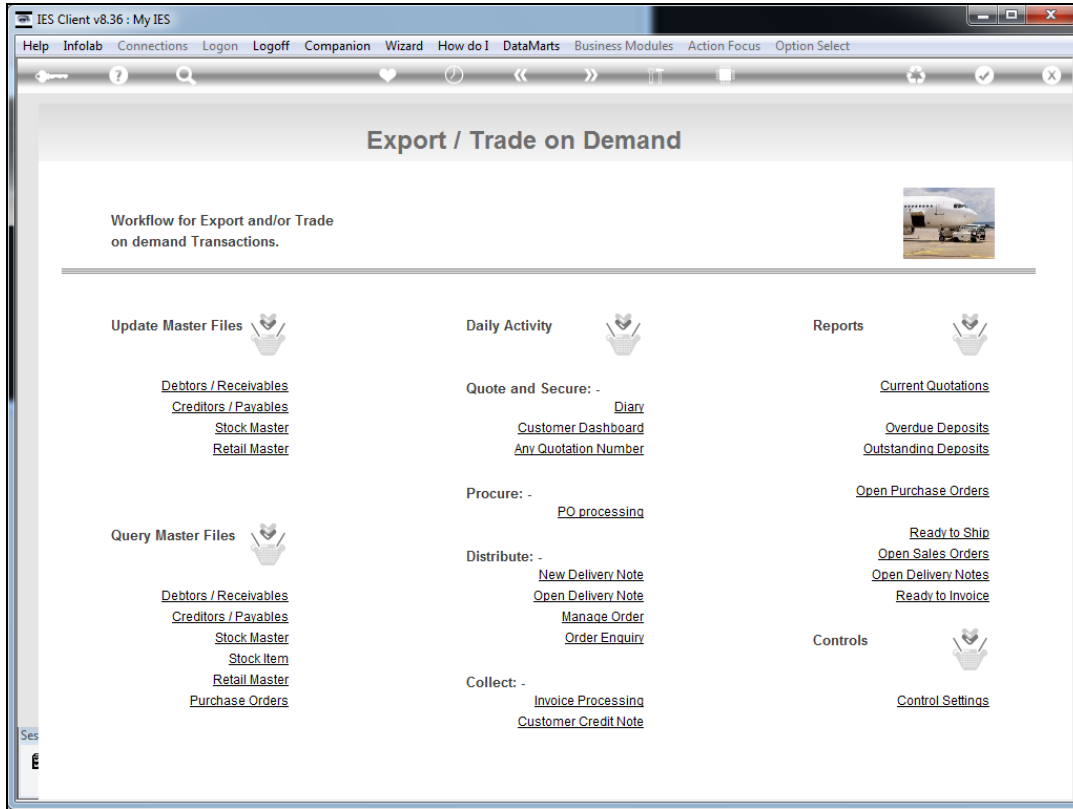


Slide 7  
Slide notes:

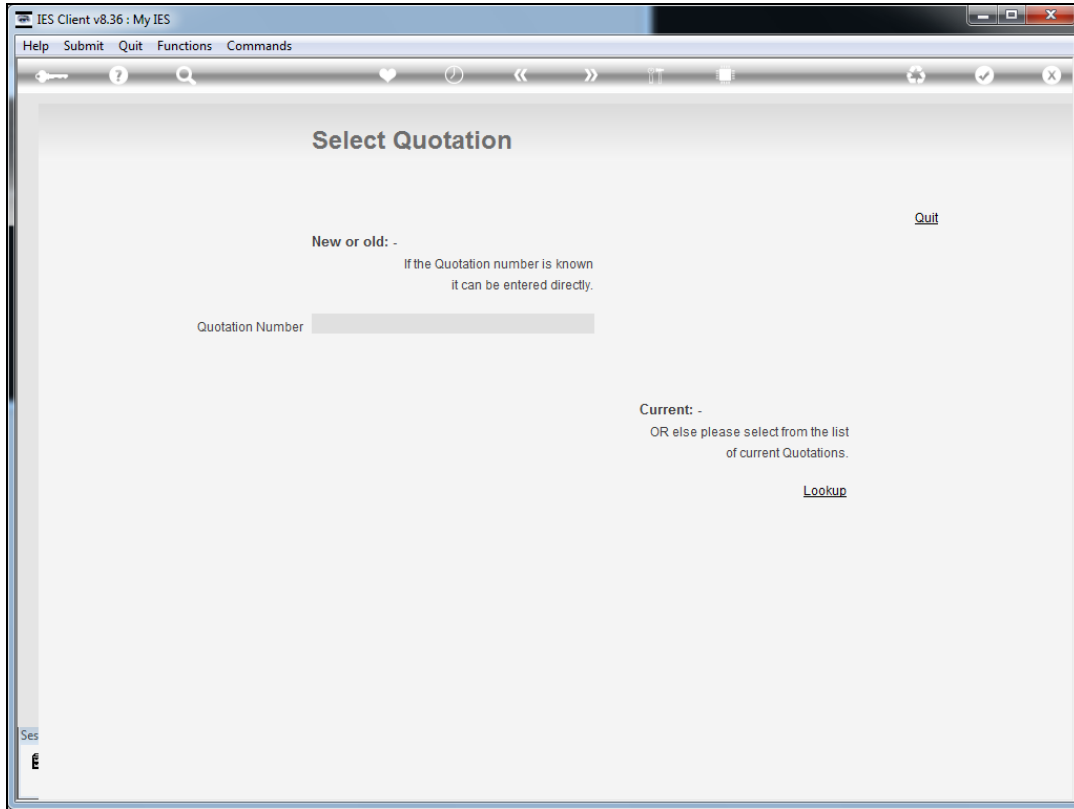


Slide 8  
Slide notes:



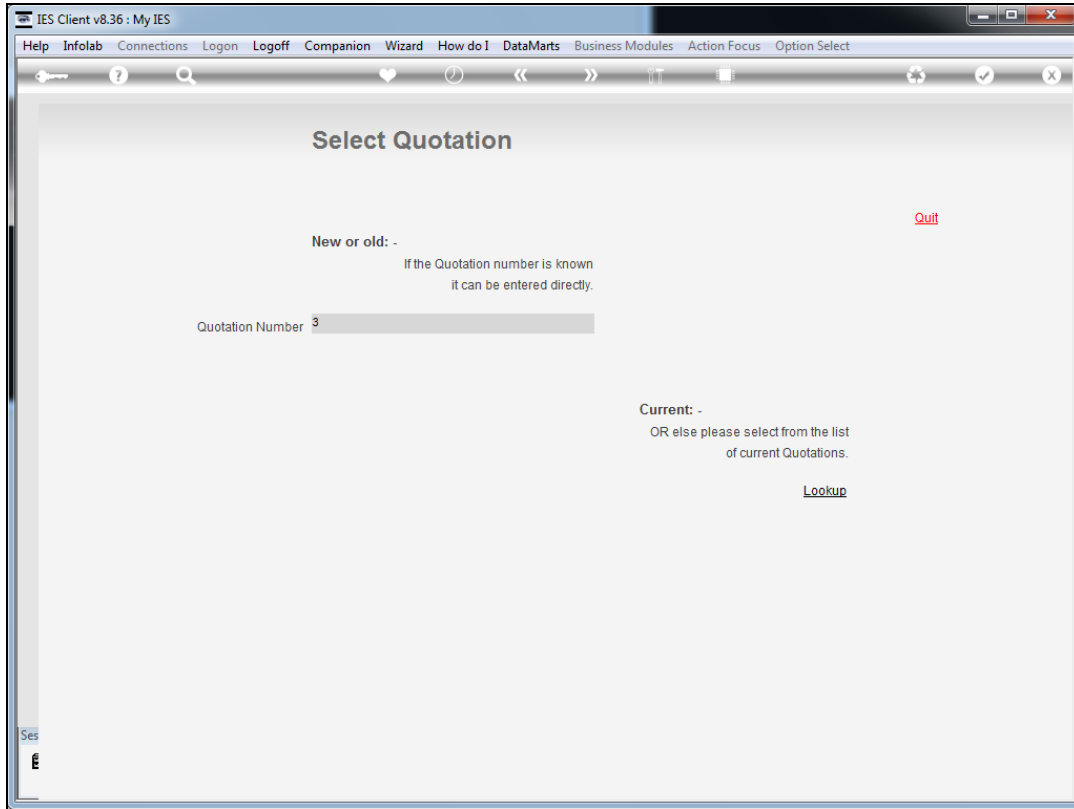


Slide 9  
Slide notes:

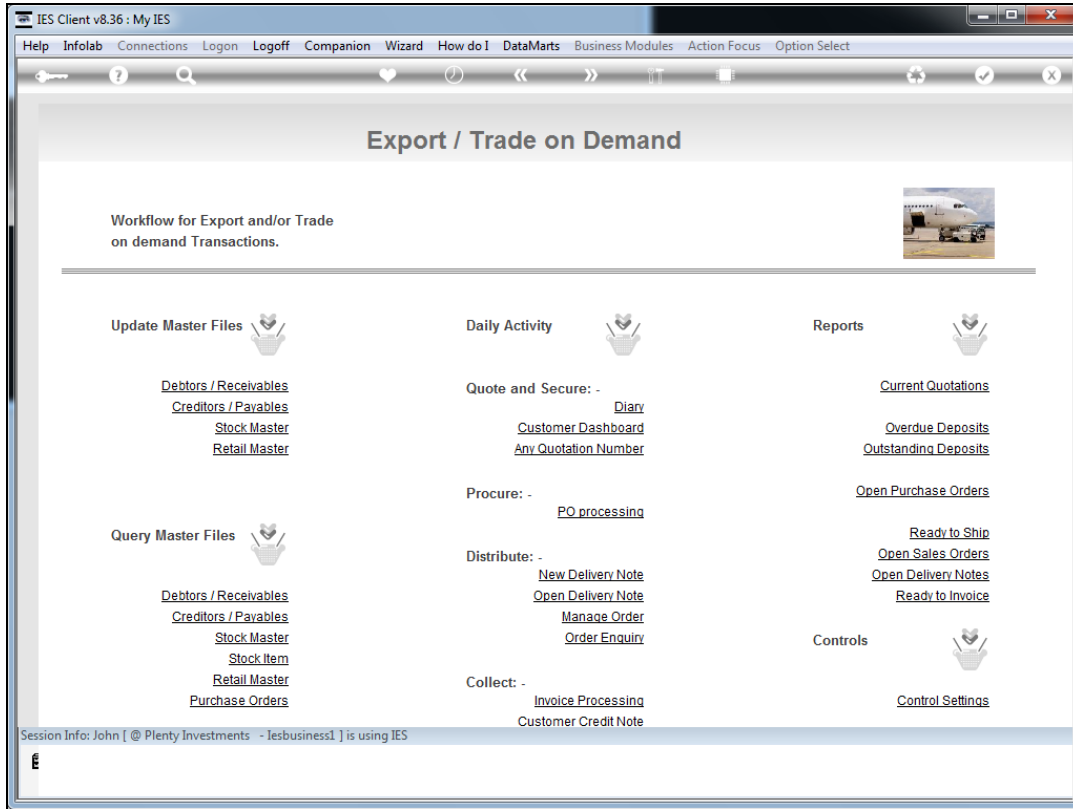


Slide 10

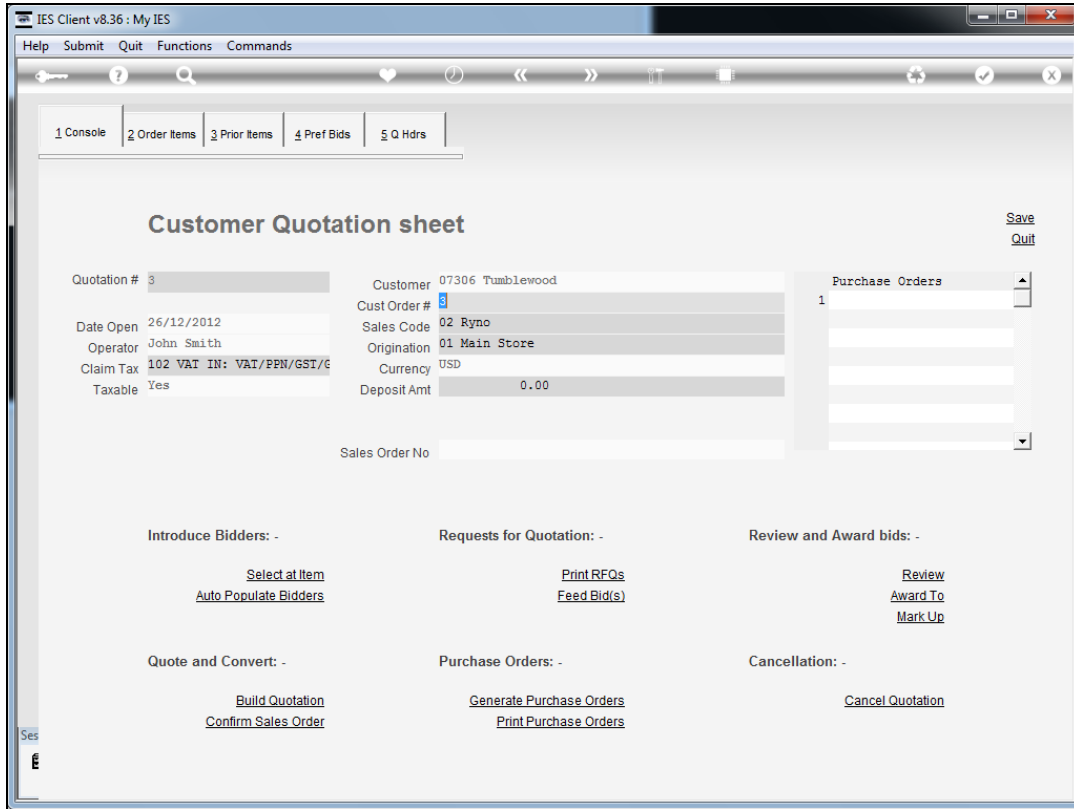
Slide notes: And at 'new or old' we can enter any valid Quotation number to enter it.



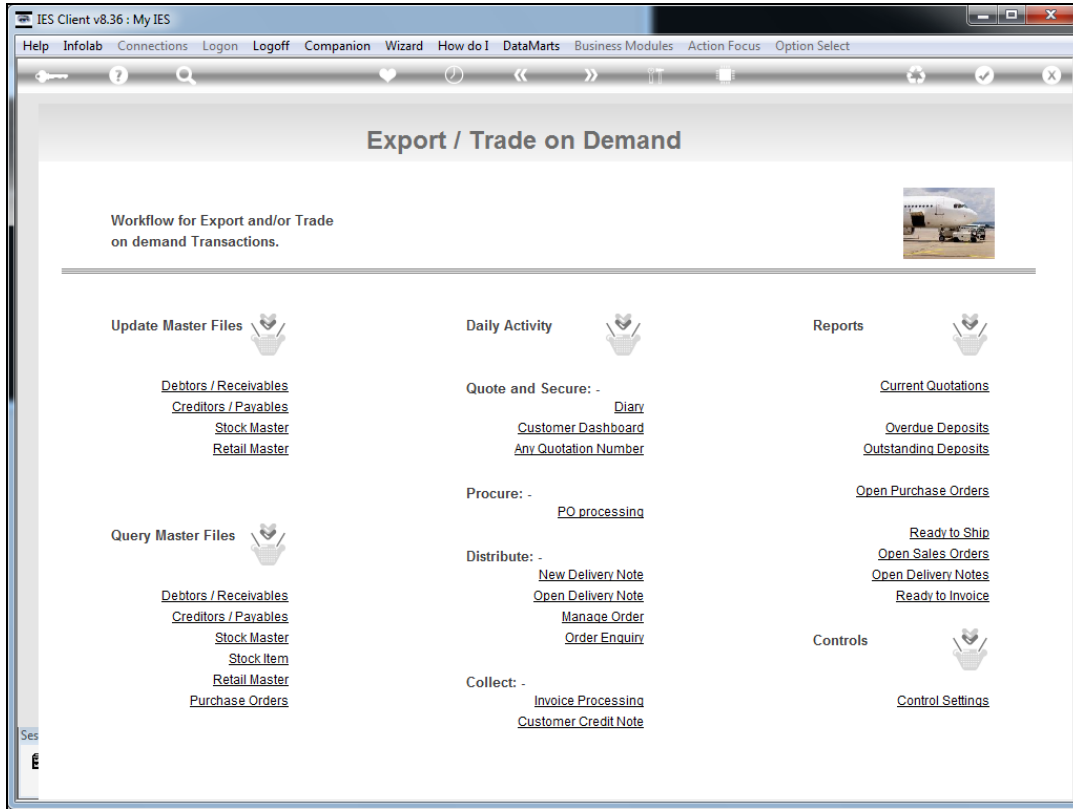
Slide 11  
Slide notes:



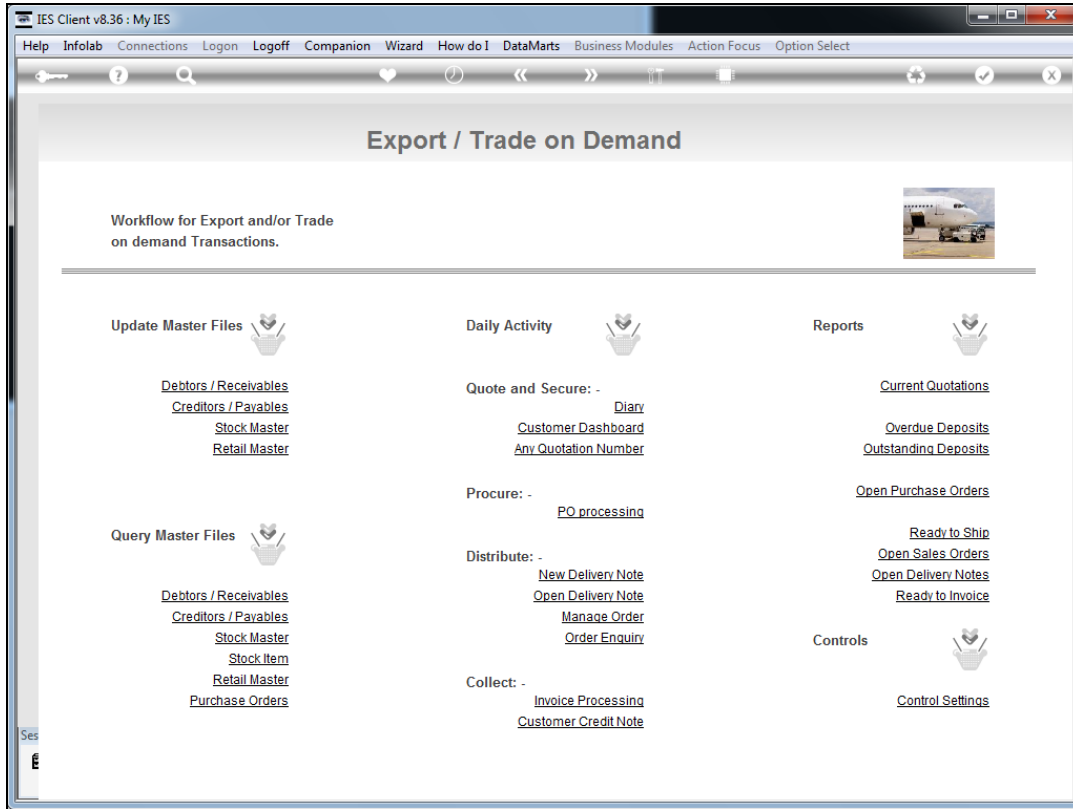
Slide 12  
Slide notes:



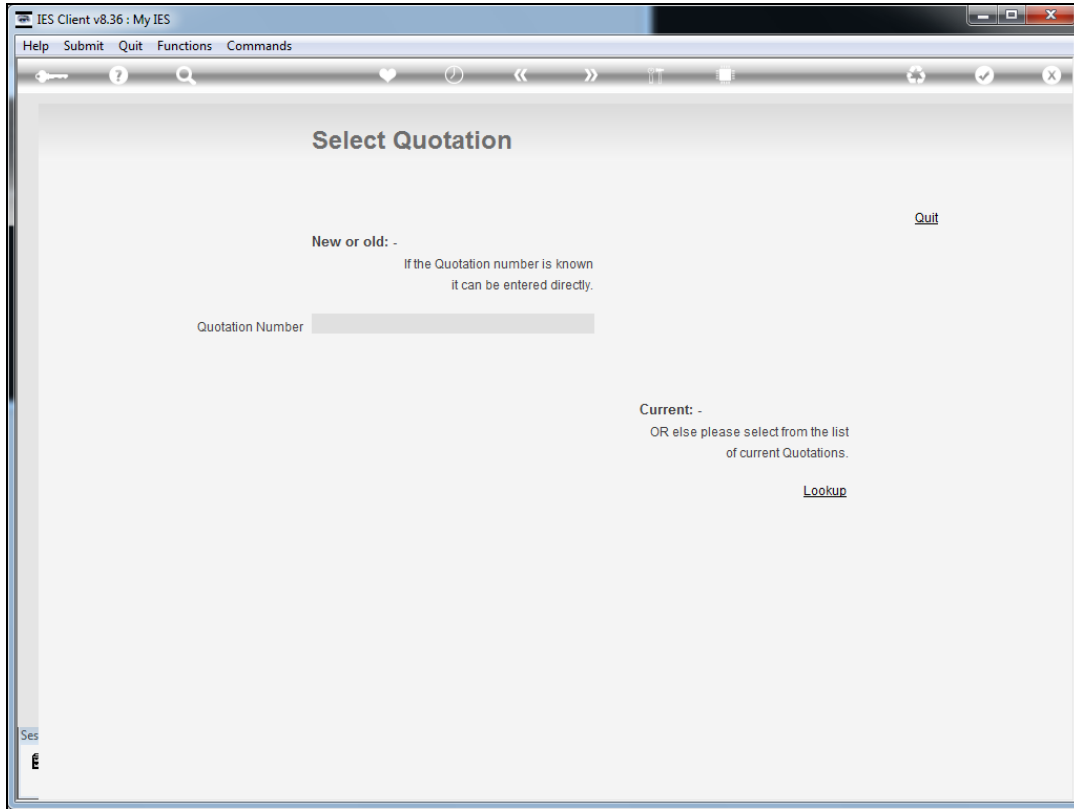
Slide 13  
Slide notes:



Slide 14  
Slide notes:



Slide 15  
Slide notes:



Slide 16  
Slide notes: