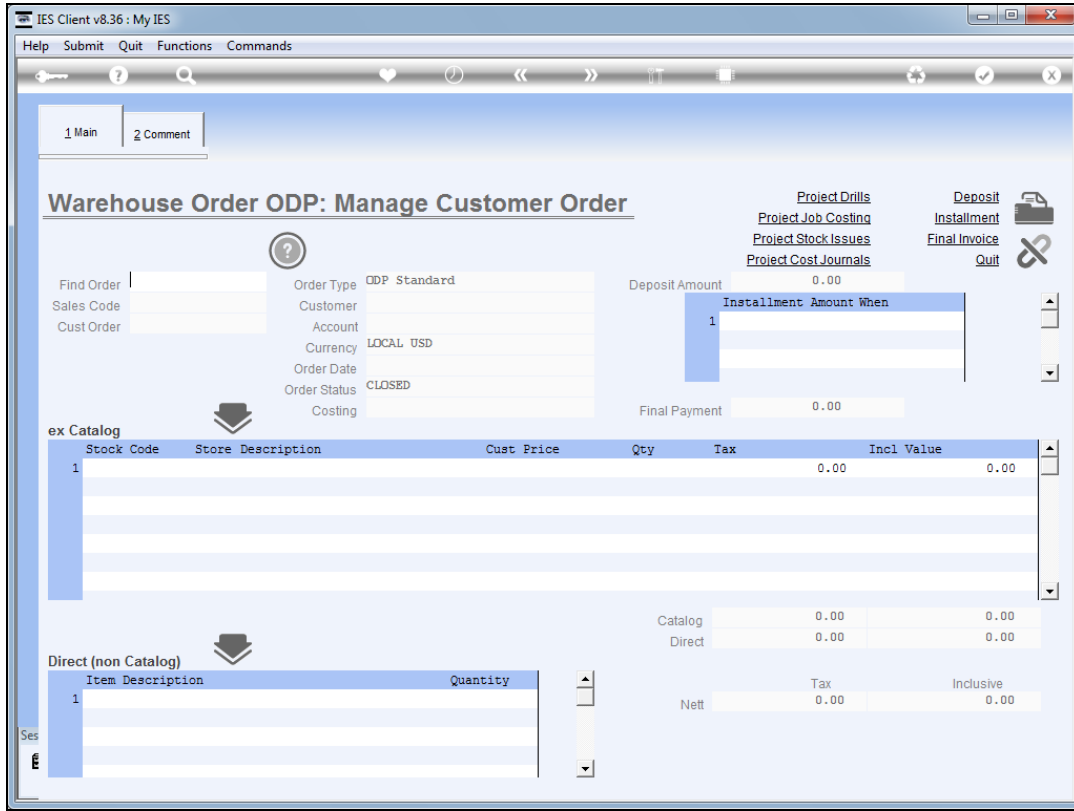
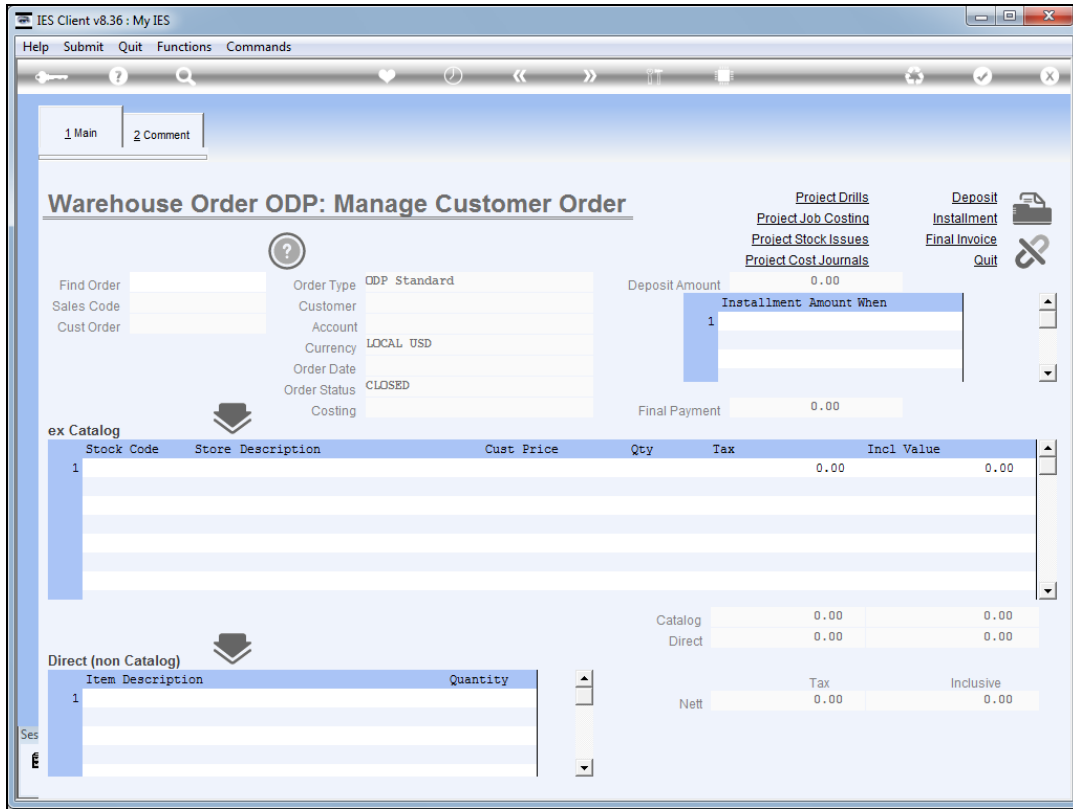


Slide 1

Slide notes: There is an option available called 'Manage Order', which for Export Trade we can use when processing a late Deposit.

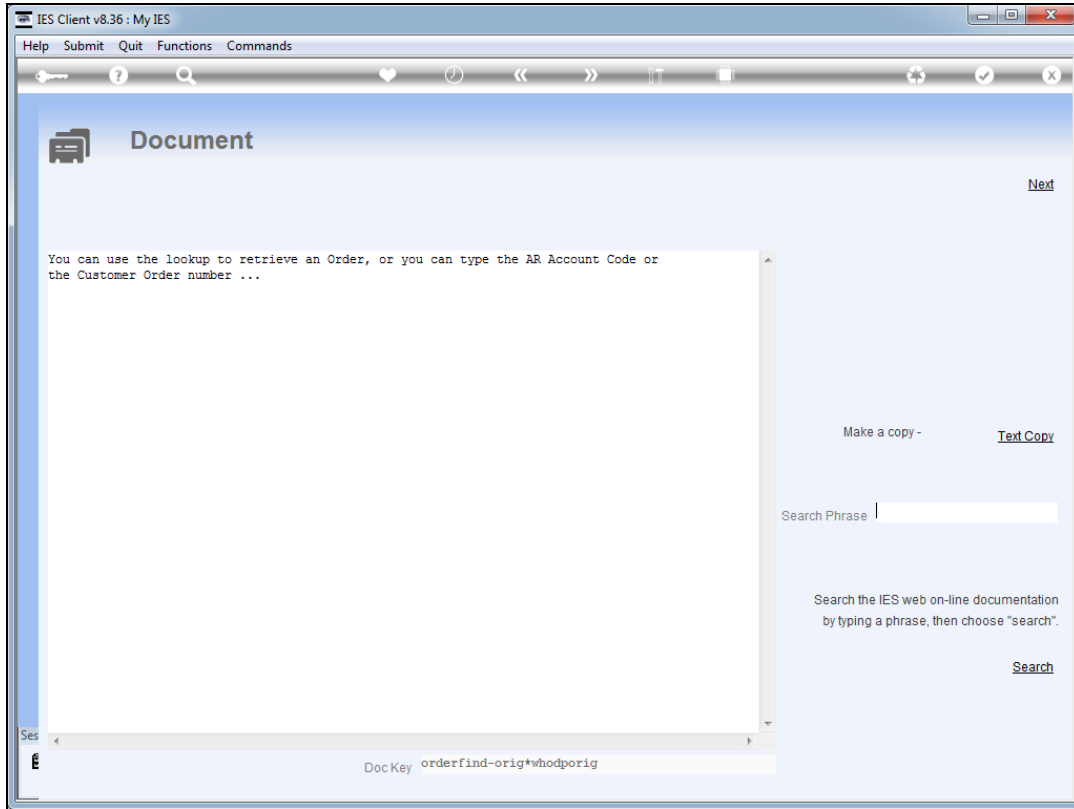


Slide 2
Slide notes:

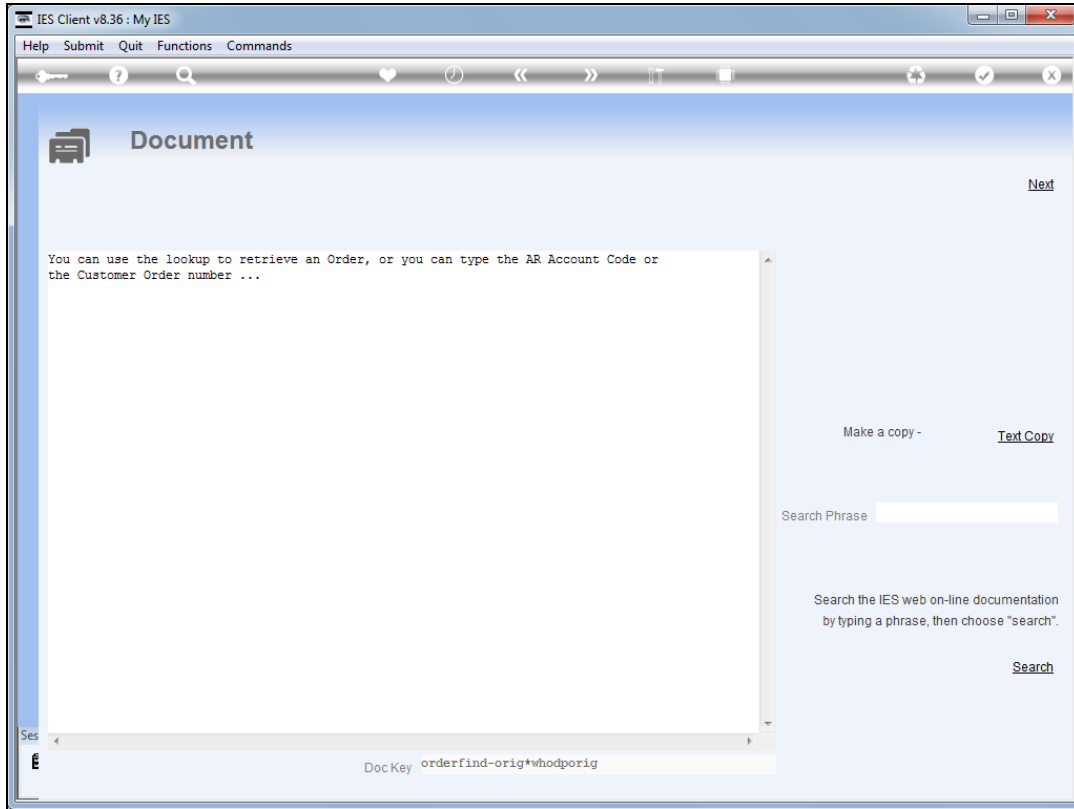


Slide 3

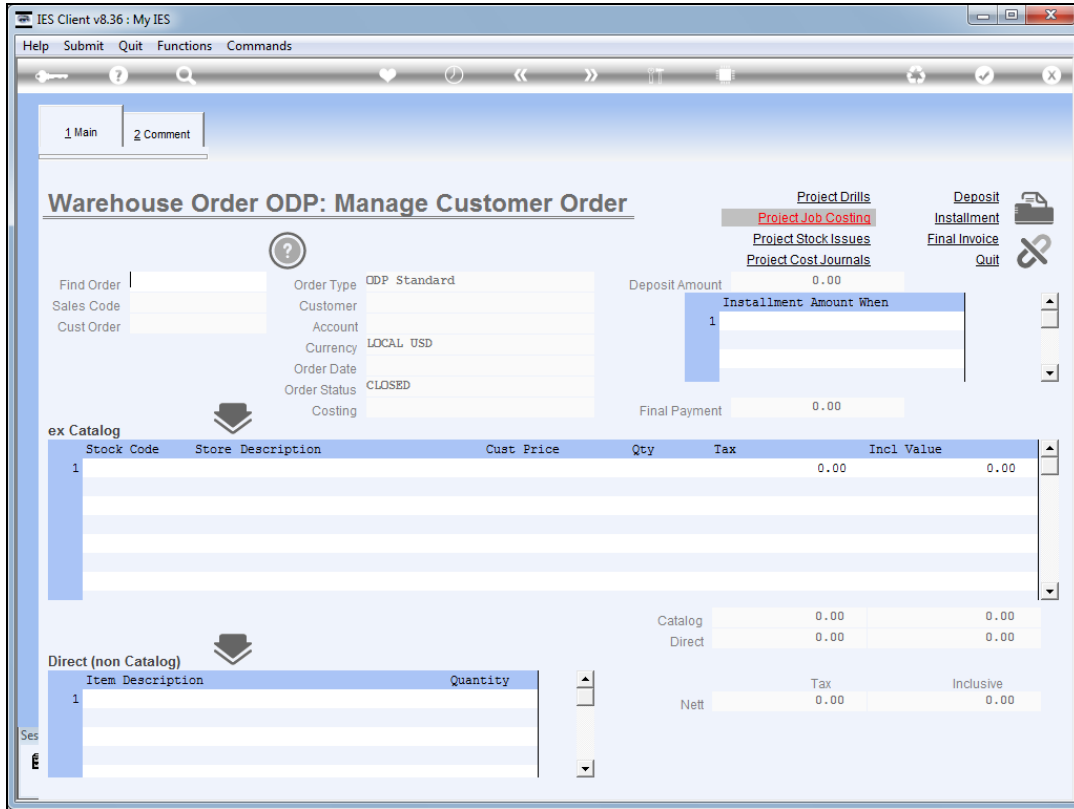
Slide notes: The Help will tell us how to locate an Order number to work with.



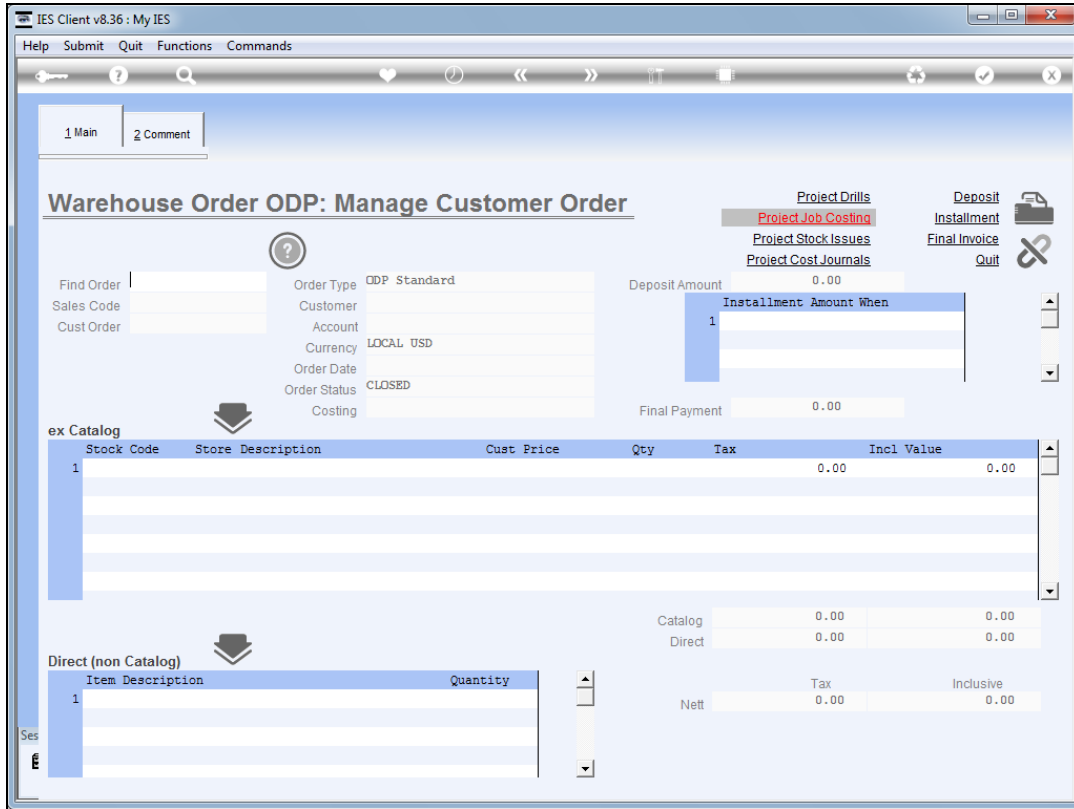
Slide 4
Slide notes:



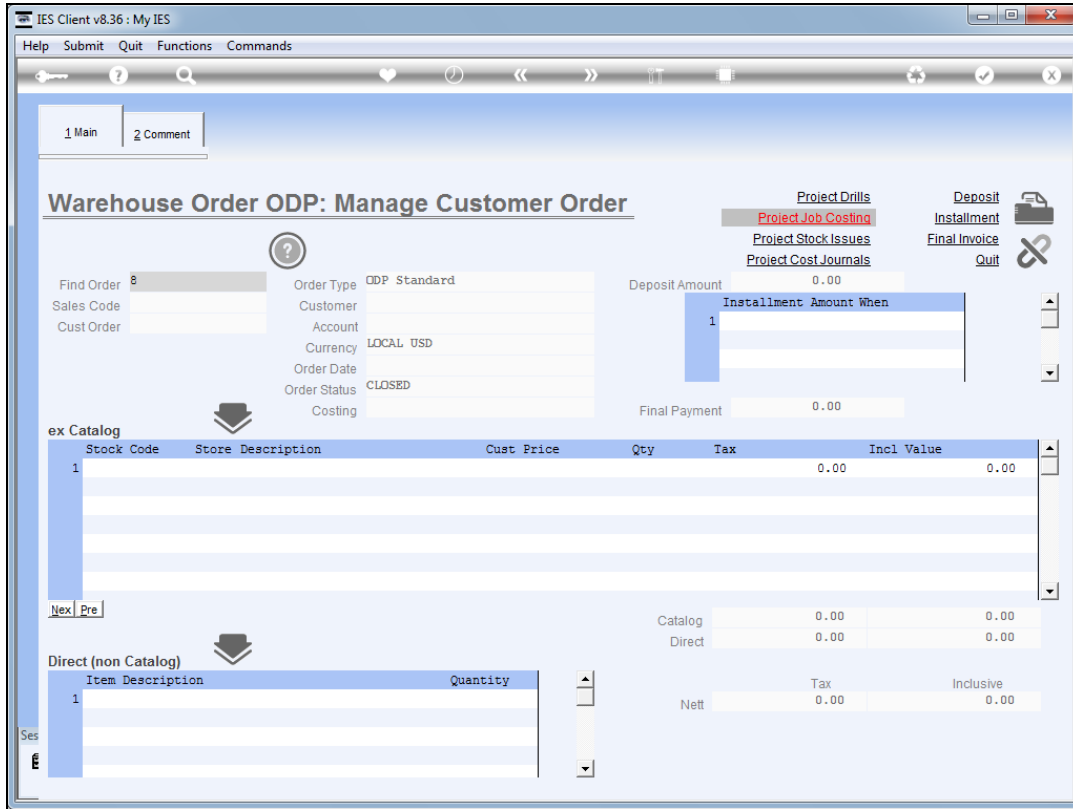
Slide 5
Slide notes:



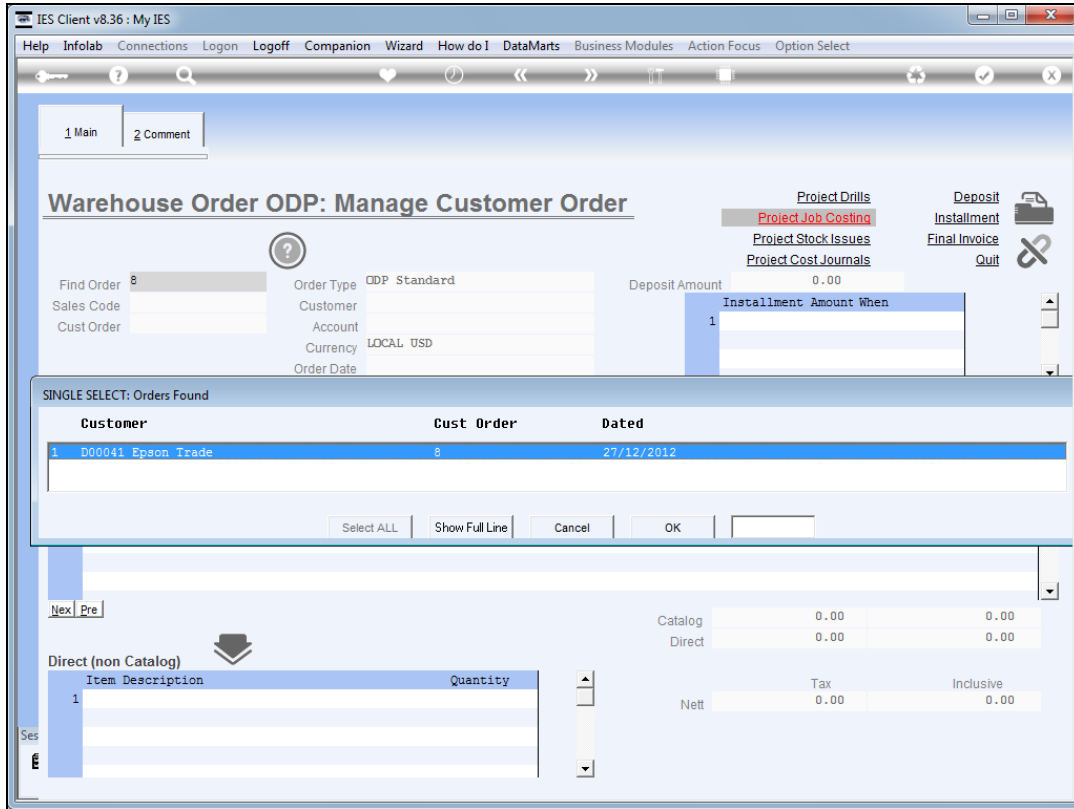
Slide 6
Slide notes:



Slide 7
Slide notes:



Slide 8
Slide notes:



Slide 9
Slide notes:

The screenshot shows the 'Warehouse Order ODP: Manage Customer Order' window in the IES Client v8.36. The interface includes a menu bar (Help, Submit, Quit, Functions, Commands), a toolbar, and a main content area. The main content area is divided into several sections: a top navigation bar with '1 Main' and '2 Comment' tabs; a header section with 'Warehouse Order ODP: Manage Customer Order' and various project-related links; a data entry section for order details; a table for 'ex Catalog' items; a 'Direct (non Catalog)' section; and a summary table for 'Catalog' and 'Direct' items.

Order Details:

Find Order	D00041_8	Order Type	ODP Standard	Deposit Amount	0.00
Sales Code	02 Ryno	Customer	Epson Trade	Installation Amount When	1
Cust Order	8	Account	D00041		
		Currency	LOCAL USD		
		Order Date	27/12/2012		
		Order Status	OPEN		
		Costing		Final Payment	30.01

ex Catalog Table:

Stock Code	Store	Description	Cust Price	Qty	Tax	Incl Value
1 3022308	01	CANON PLUS 8.5x11 20 GLOSSY	27.28	1.00	2.73	30.01

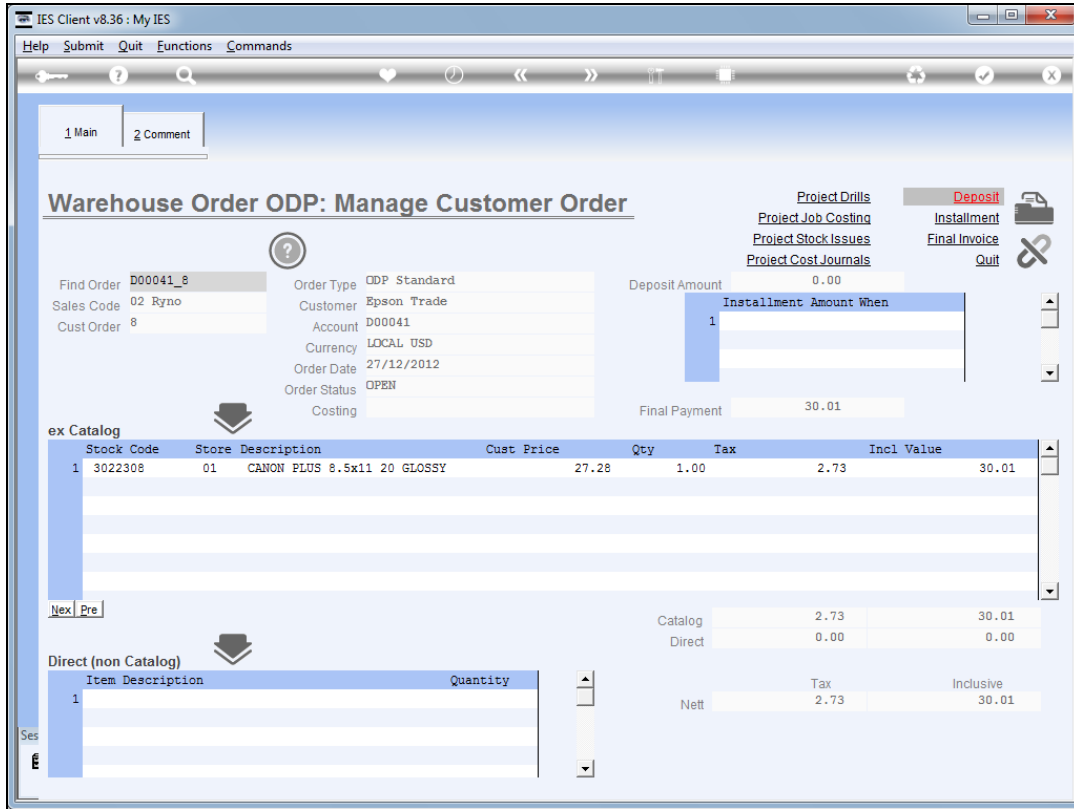
Direct (non Catalog) Table:

Item	Description	Quantity
1		

Summary Table:

	Tax	Inclusive
Catalog	2.73	30.01
Direct	0.00	0.00
Nett	2.73	30.01

Slide 10
Slide notes:



Slide 11

Slide notes: In a case where a Deposit needs to be processed but was not processed at the time of confirming the Sales Order, it can be done here. We can also get a Status print for the Order.

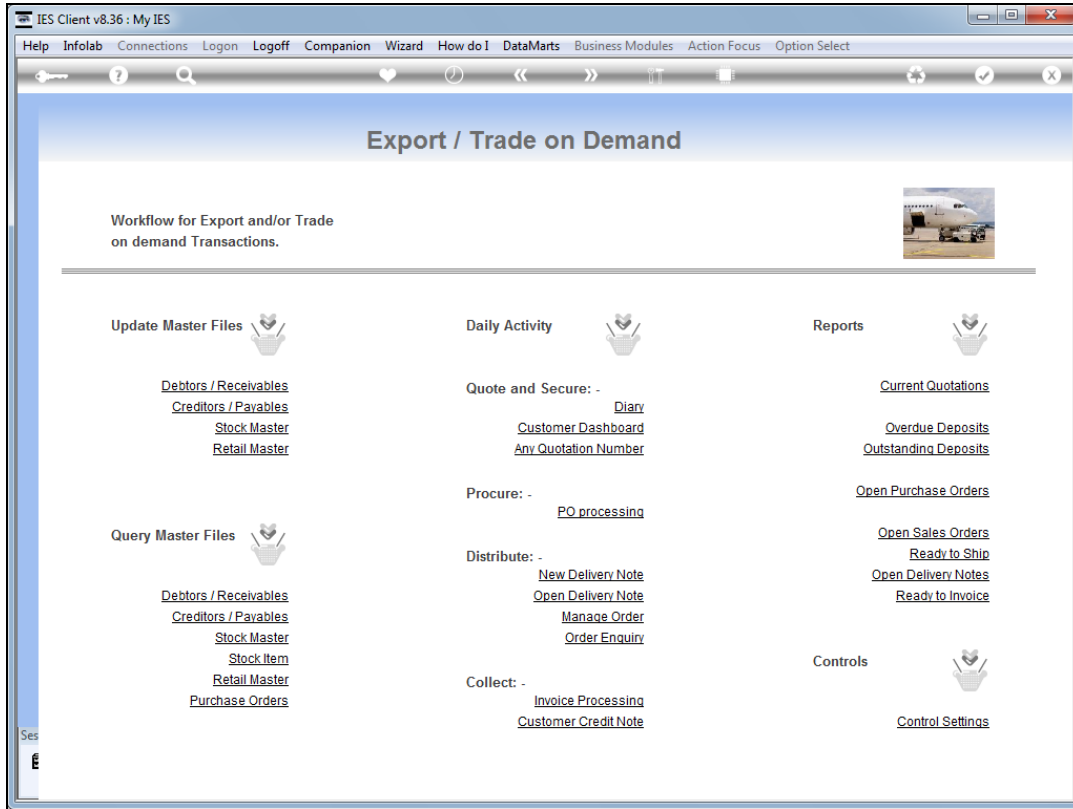
The screenshot shows the 'Warehouse Order ODP: Manage Customer Order' interface in the IES Client v8.36. The window title is 'My IES'. The interface includes a menu bar (Help, Submit, Quit, Functions, Commands), a toolbar, and a main content area. The main content area is divided into several sections: a top navigation bar with '1 Main' and '2 Comment' tabs; a header section with the title 'Warehouse Order ODP: Manage Customer Order' and several links (Project Drills, Deposit, Project Job Costing, Installment, Project Stock Issues, Final Invoice, Project Cost Journals, Quit); a data entry section with fields for Find Order (D00041_8), Sales Code (02 Ryno), Cust Order (8), Order Type (ODP Standard), Customer (Epson Trade), Account (D00041), Currency (LOCAL USD), Order Date (27/12/2012), Order Status (OPEN), and Costing; a summary section with Deposit Amount (0.00), Installment Amount When (1), and Final Payment (30.01); a table section for 'ex Catalog' with columns for Stock Code, Store, Description, Cust Price, Qty, Tax, and Incl Value; a 'Direct (non Catalog)' section with columns for Item, Description, and Quantity; and a summary table for Catalog and Direct items, including a Net total.

Stock Code	Store	Description	Cust Price	Qty	Tax	Incl Value
1 3022308	01	CANON PLUS 8.5x11 20 GLOSSY	27.28	1.00	2.73	30.01

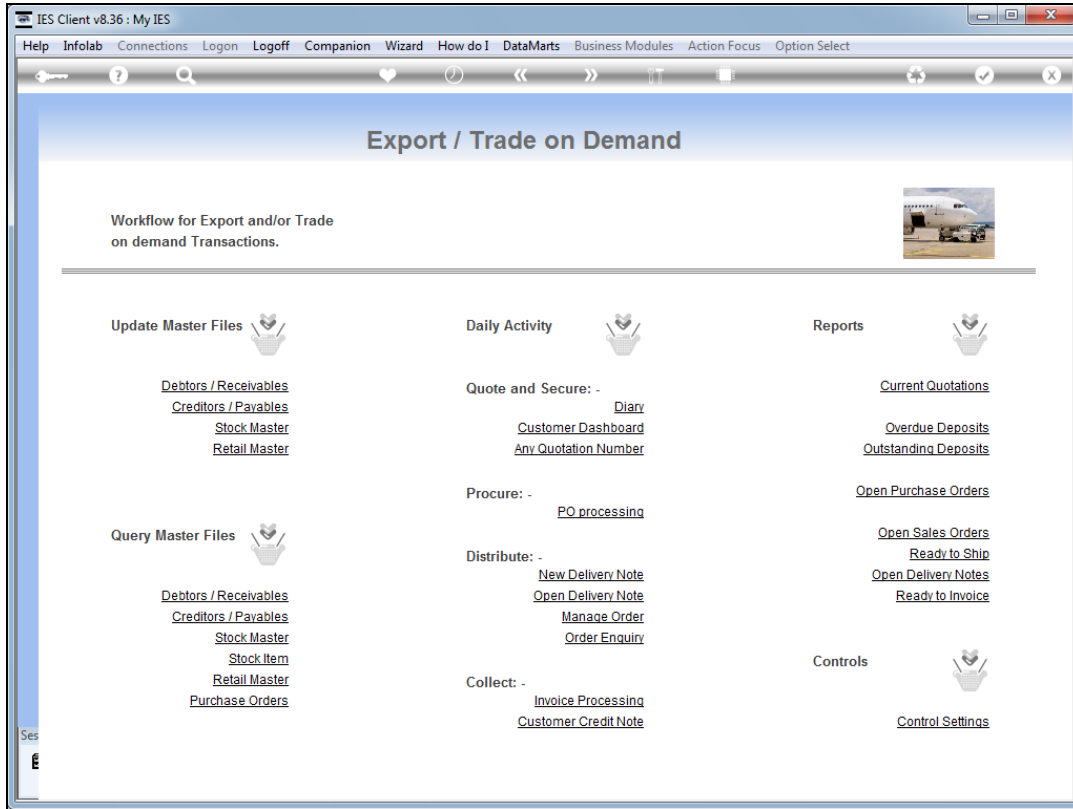
Item	Description	Quantity
1		

	Tax	Inclusive
Catalog	2.73	30.01
Direct	0.00	0.00
Nett	2.73	30.01

Slide 12
Slide notes:



Slide 13
Slide notes:



Slide 14
Slide notes: