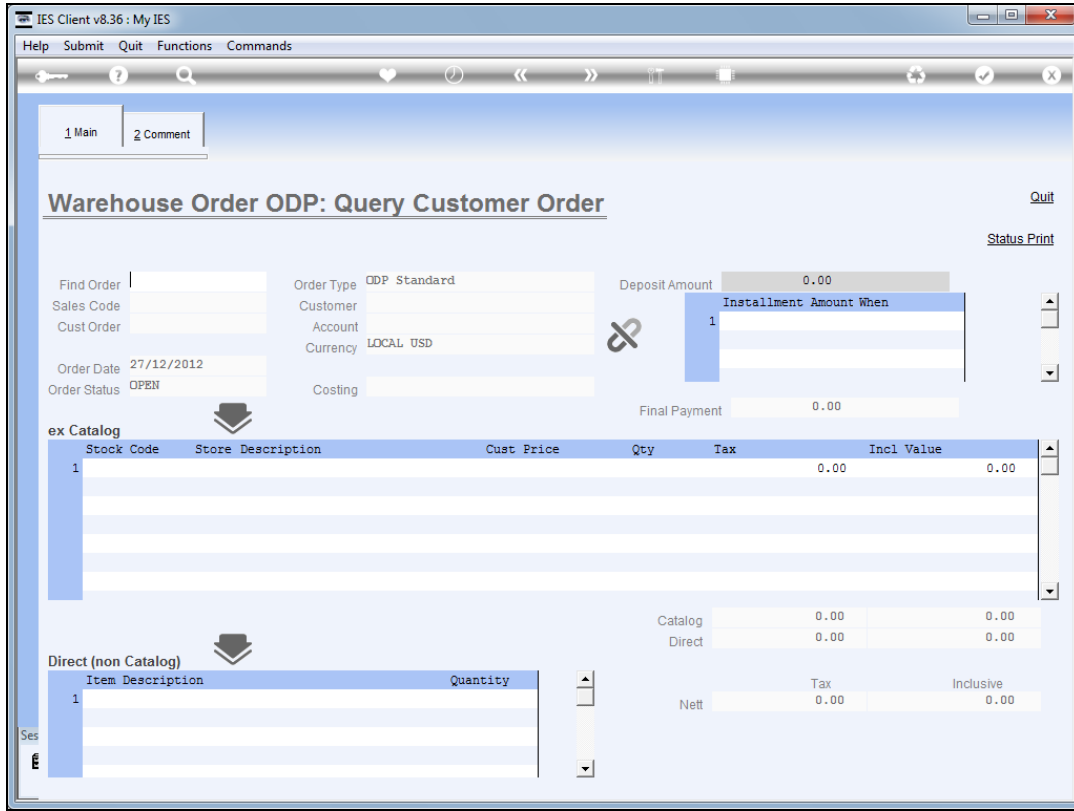
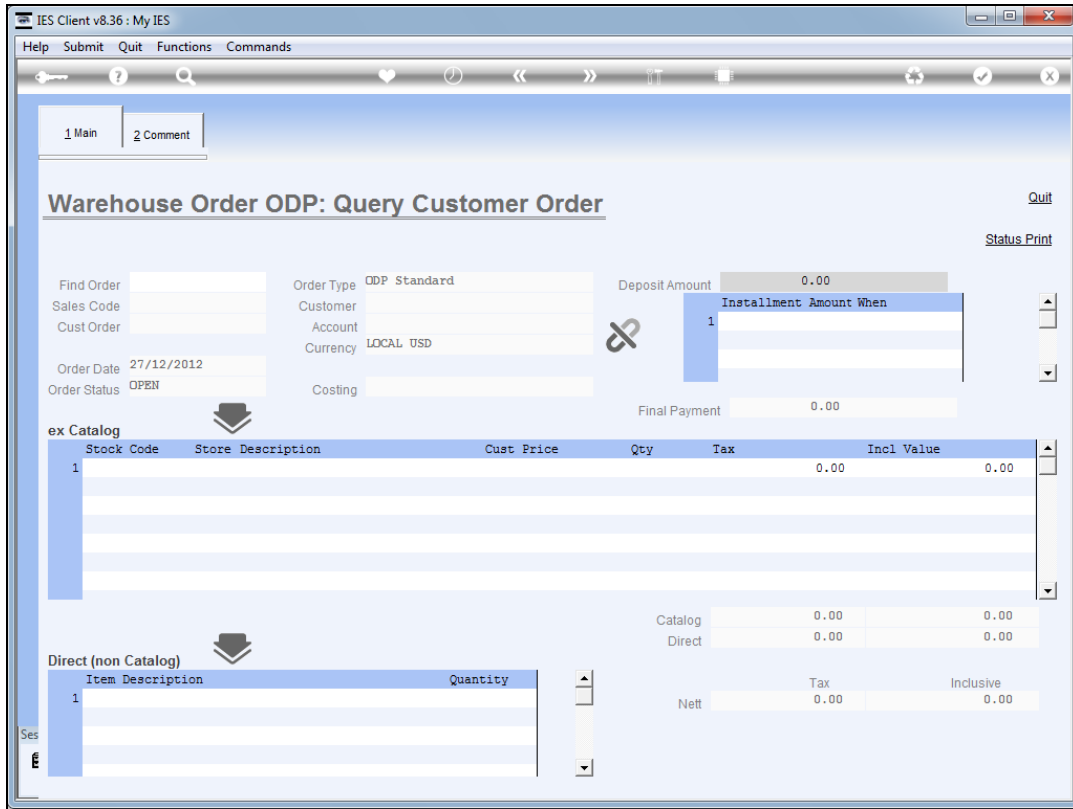


Slide 1

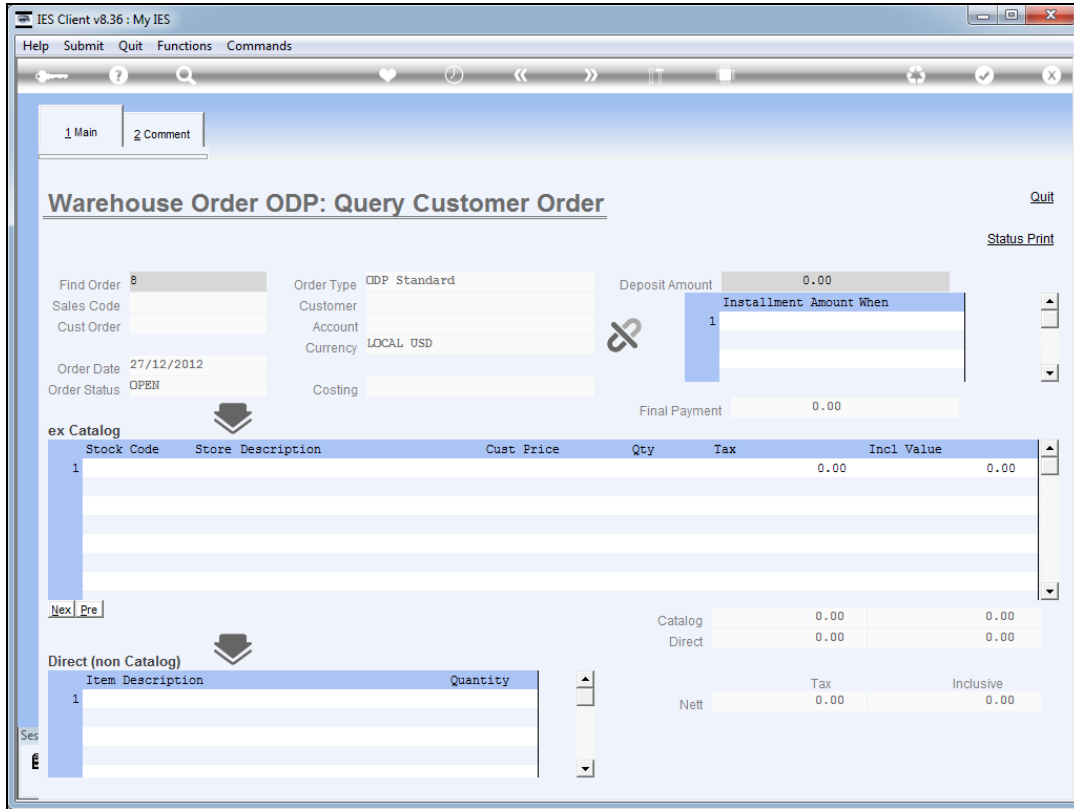
Slide notes: We have an Order Enquiry option where we can get a status update on the Order.



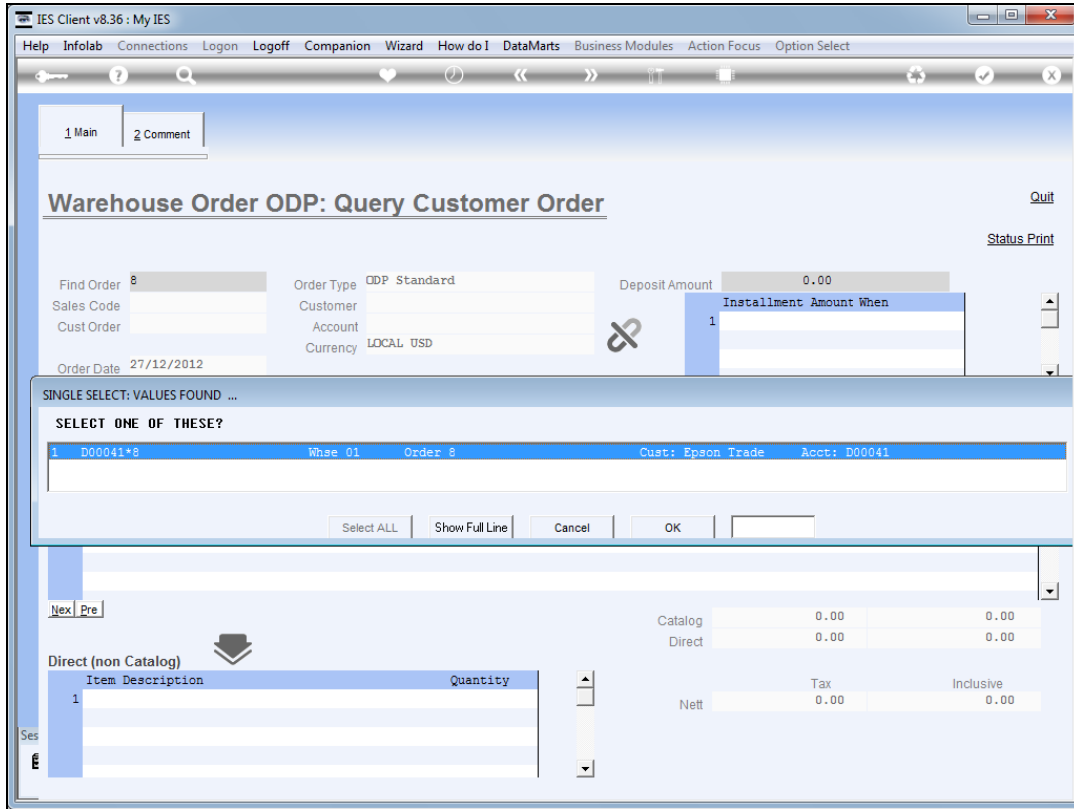
Slide 2
Slide notes:



Slide 3
Slide notes:



Slide 4
Slide notes:



Slide 5
Slide notes:

IES Client v8.36 : My IES

Help Submit Quit Functions Commands

1 Main 2 Comment

Warehouse Order ODP: Query Customer Order

Quit
Status Print

Find Order: D00041*8 Order Type: ODP Standard Deposit Amount: 0.00
Sales Code: 02 Ryno Customer: Epson Trade Installment Amount When: 1
Cust Order: 8 Account: D00041 Currency: LOCAL USD Final Payment: 30.01
Order Date: 27/12/2012 Costing: Order Status: OPEN

ex Catalog

Stock Code	Store	Description	Cust Price	Qty	Tax	Incl Value
1 3022308	01	CANON PLUS 8.5x11 20 GLOSSY	27.28	1.00	2.73	30.01

Nex Pre

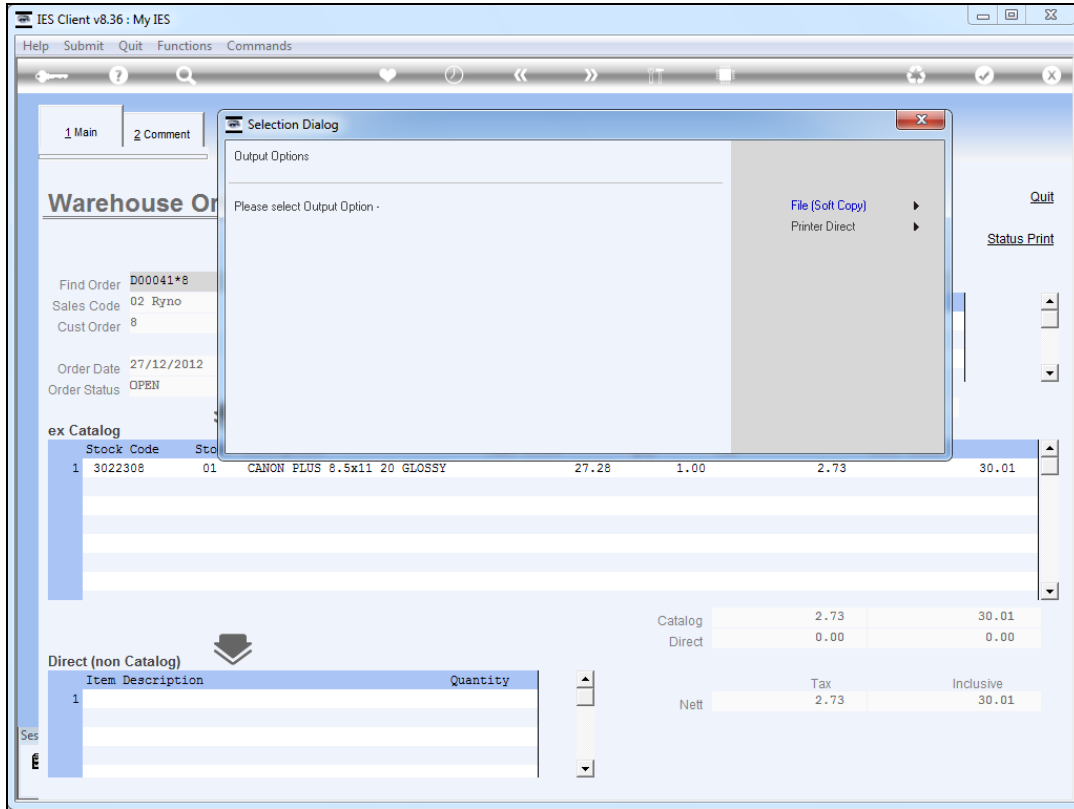
Direct (non Catalog)

Item	Description	Quantity
1		

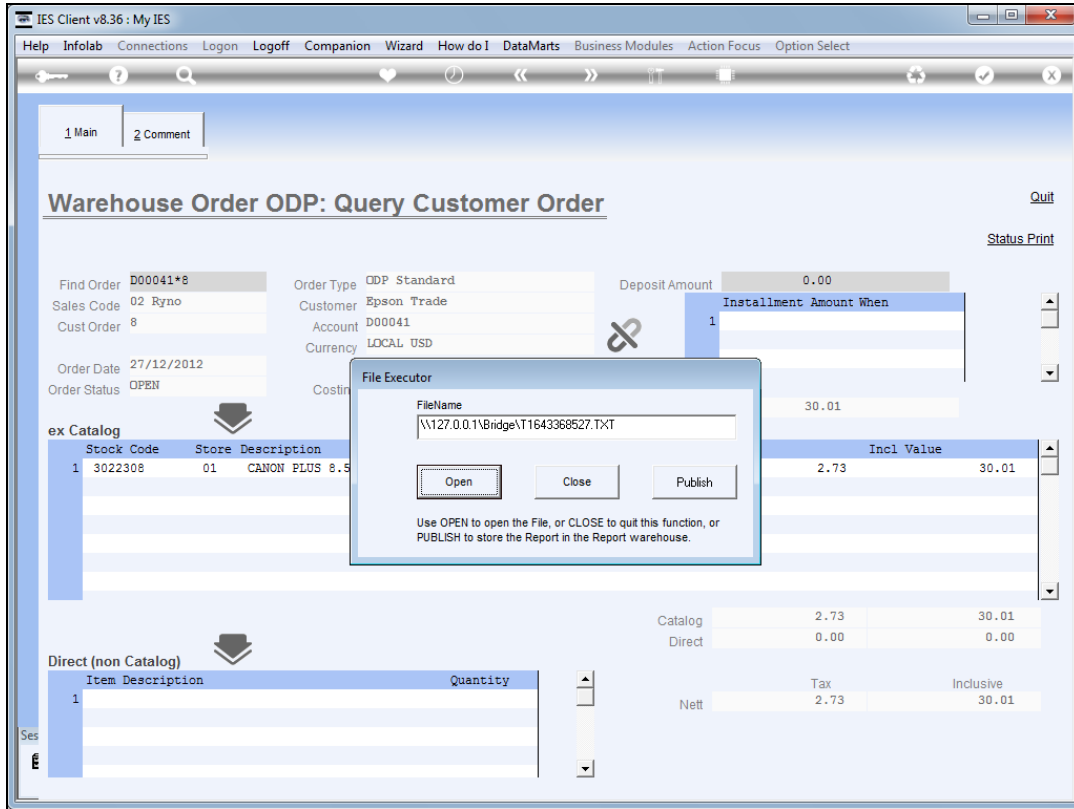
Ses

	Tax	Inclusive
Catalog	2.73	30.01
Direct	0.00	0.00
Nett	2.73	30.01

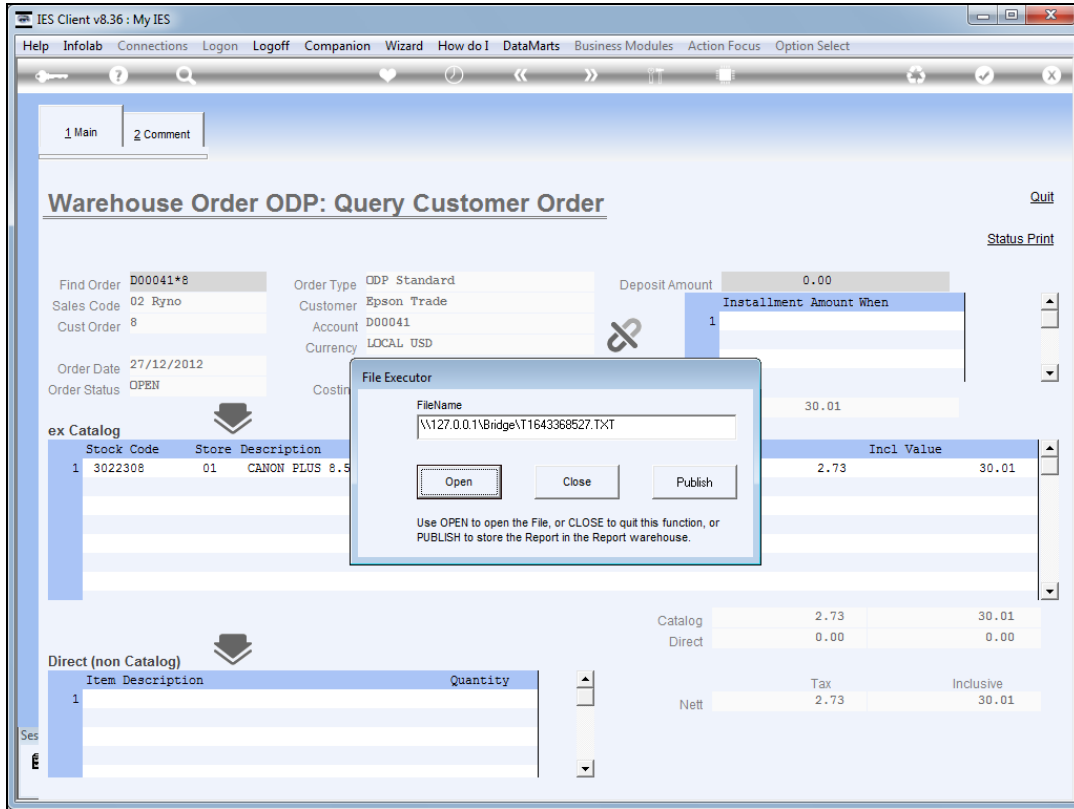
Slide 6
Slide notes:



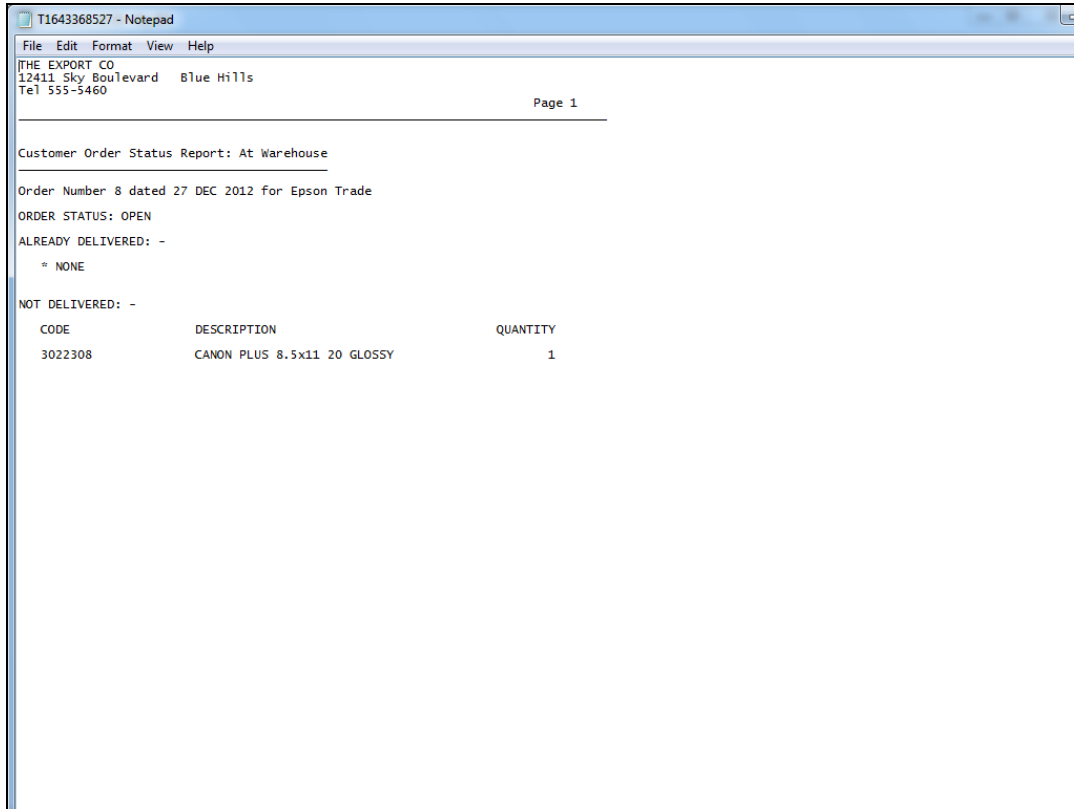
Slide 7
Slide notes:



Slide 8
Slide notes:

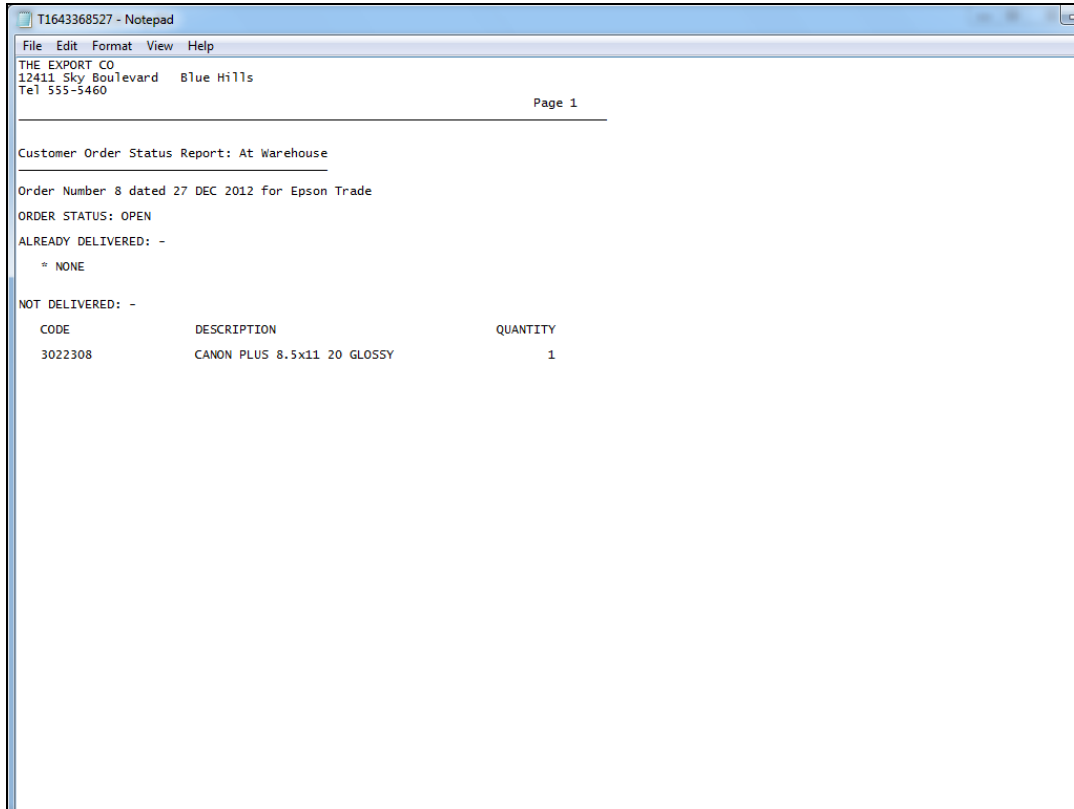


Slide 9
Slide notes:

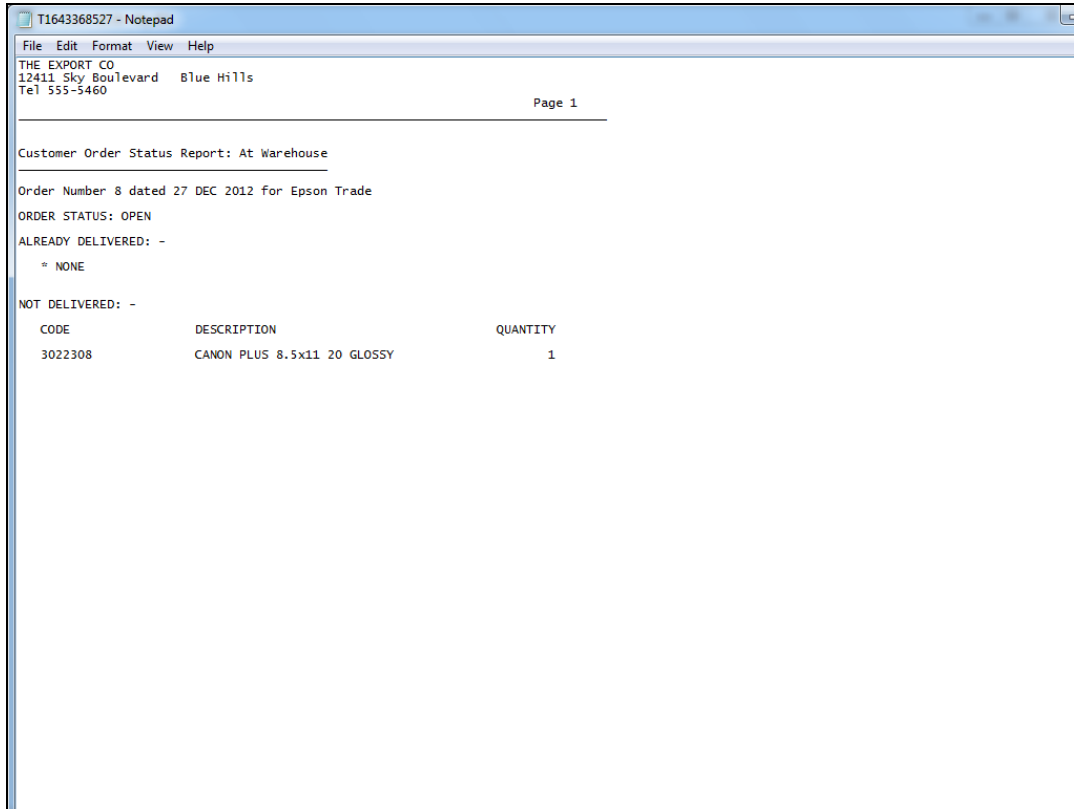


Slide 10

Slide notes: The status print reveals what has been delivered and what remains outstanding.



Slide 11
Slide notes:



Slide 12
Slide notes:

IES Client v8.36 : My IES

Help Submit Quit Functions Commands

1 Main 2 Comment

Warehouse Order ODP: Query Customer Order

Quit
Status Print

Find Order: D00041*8 Order Type: ODP Standard Deposit Amount: 0.00
Sales Code: 02 Ryno Customer: Epson Trade Installment Amount When: 1
Cust Order: 8 Account: D00041 Currency: LOCAL USD Final Payment: 30.01
Order Date: 27/12/2012 Costing: Order Status: OPEN

ex Catalog

Stock Code	Store	Description	Cust Price	Qty	Tax	Incl Value
1 3022308	01	CANON PLUS 8.5x11 20 GLOSSY	27.28	1.00	2.73	30.01

Nex Pre

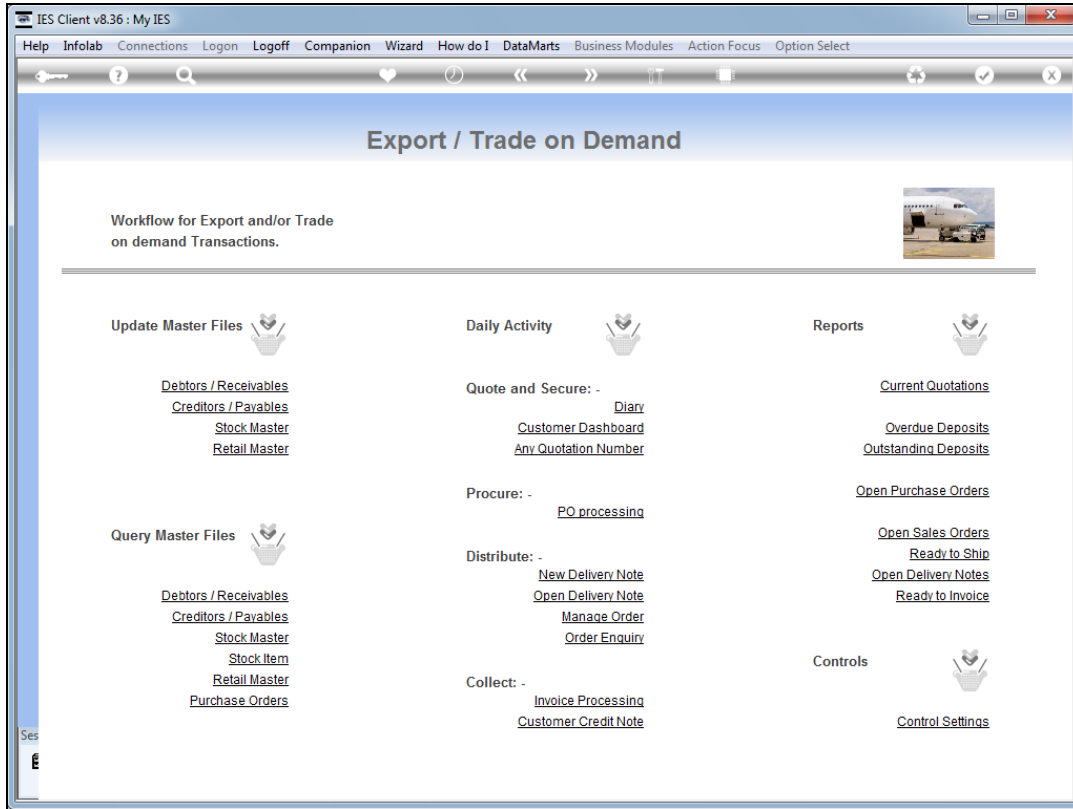
Direct (non Catalog)

Item	Description	Quantity
1		

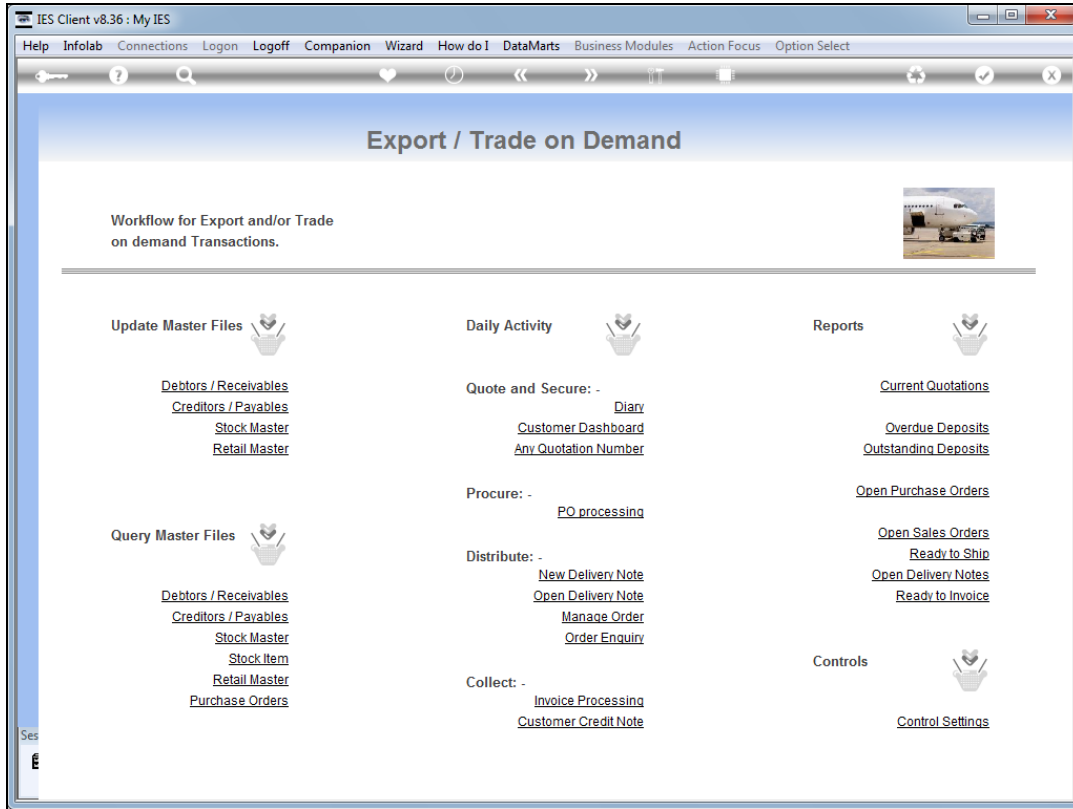
Ses

	Tax	Inclusive
Catalog	2.73	30.01
Direct	0.00	0.00
Nett	2.73	30.01

Slide 13
Slide notes:



Slide 14
Slide notes:



Slide 15
Slide notes: