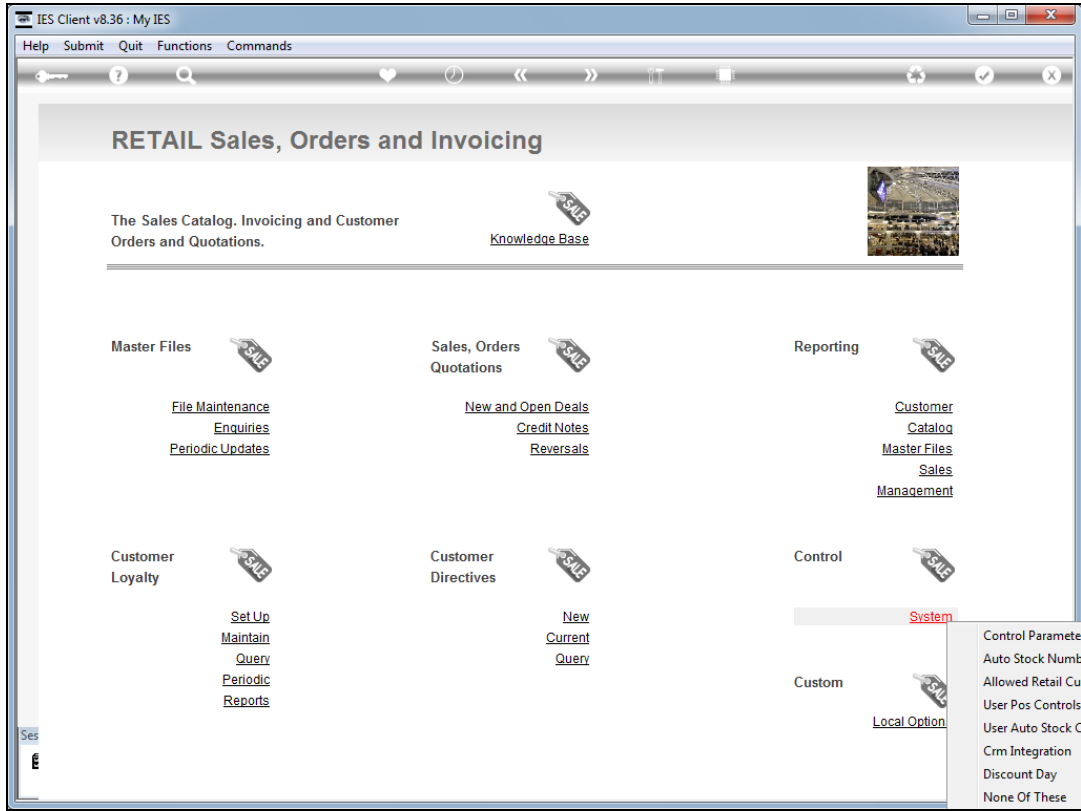


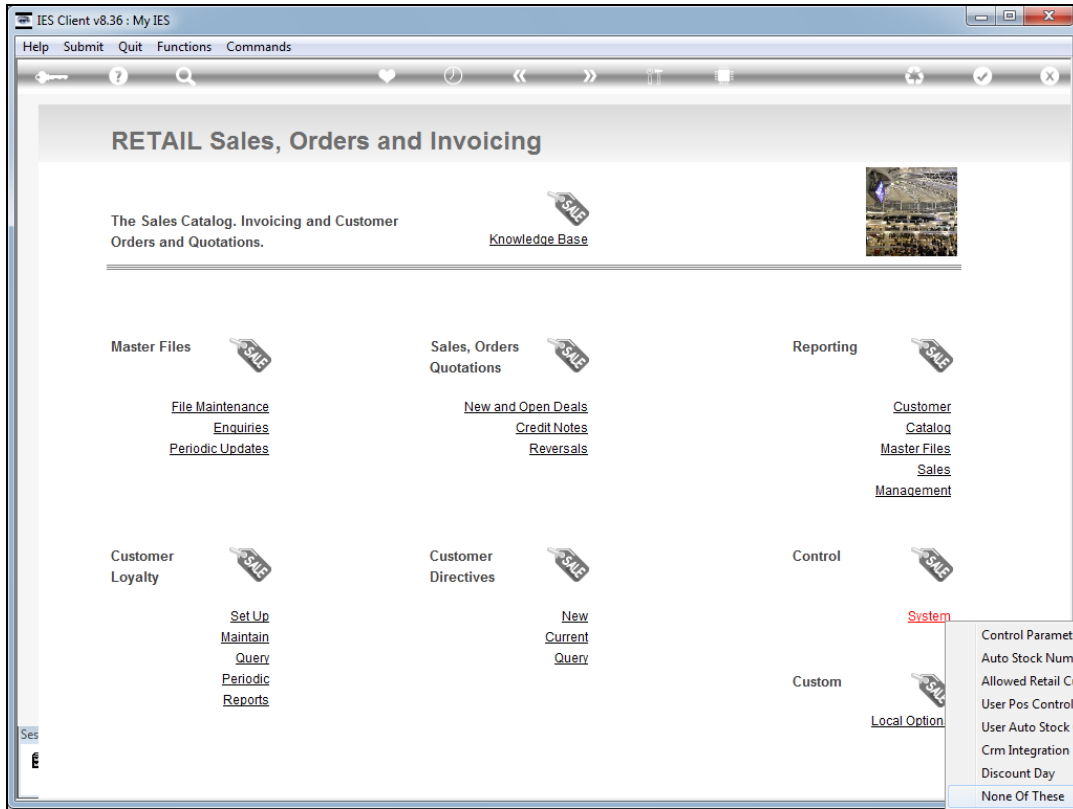
Slide 1

Slide notes: The Retail system is an underlying component for Export Trade. Quotations and Customer Sales Orders use the Retail system transparently. As such, the normal set up sequences for Retail should be followed before we can use Export Trade.

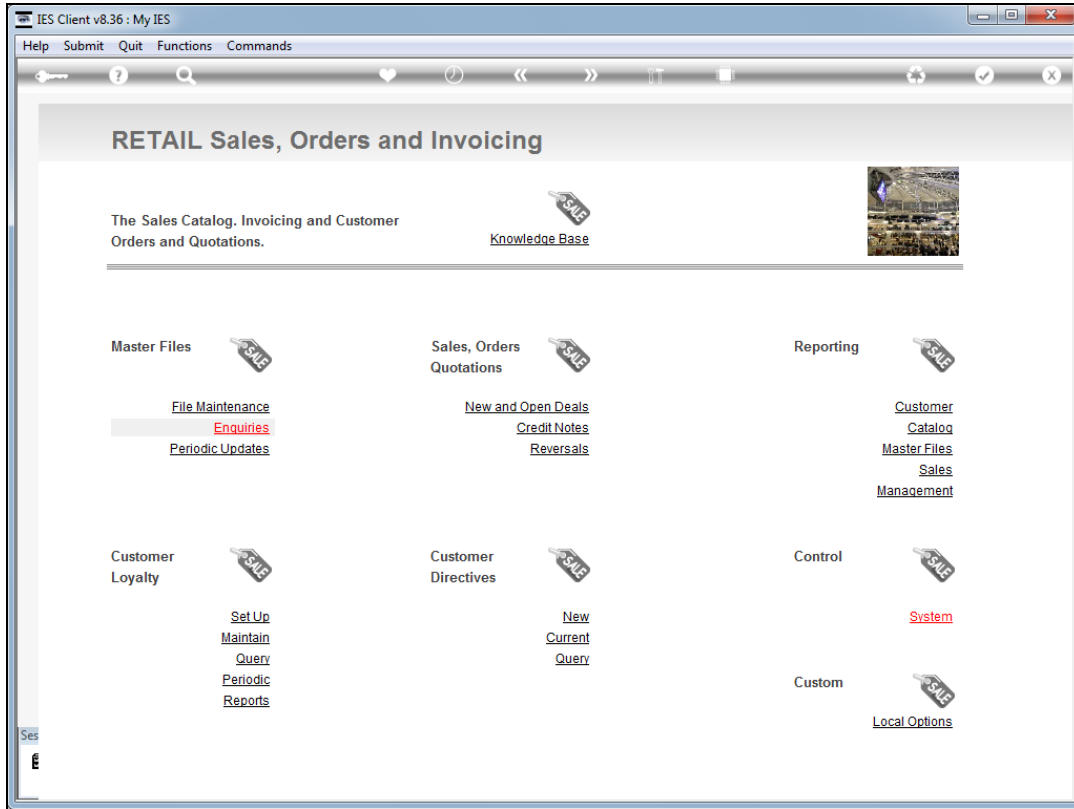


Slide 2

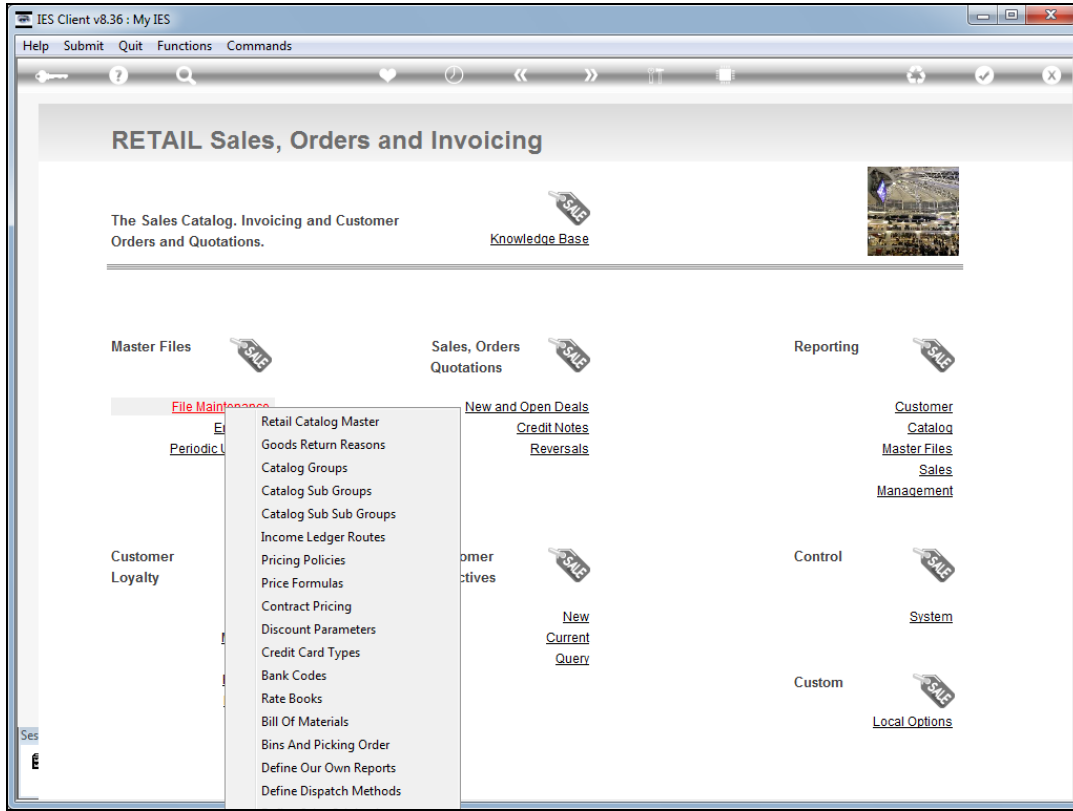
Slide notes: We note the options at System Control that need to be set up.



Slide 3
Slide notes:



Slide 4
Slide notes:



Slide 5

Slide notes: Also at File Maintenance.

IES Client v8.36 : My IES

Help Submit Quit Functions Commands

RETAIL CATALOG TEMPLATE

Template Key

1 SETTINGS

Description
Tax Parameter
Accounts Route
Unit Of Sale

2 CATALOG HIERARCHY

Group
Sub Group
Sub Sub Group
Category

3 PRICING and DISCOUNT

Price Policy
Club Discount
Volume Discount
Loyalty %
Comm %
Custom Formula

4 PHYSICAL LOCATION

Hint: When a Template is applied for a new Catalogue Item that is not Stock, then there is no Bin. If applied with a Stock Code, then the Bin and Stores list are defaulted from the Stock Item.

Save

Slide 6

Slide notes: It is certainly recommended to define 1 or more Retail Catalog Templates for "on the fly" creation of new items from Export Trade.

IES Client v8.36 : My IES

Help Submit Quit Functions Commands

RETAIL CATALOG TEMPLATE

Template Key

1 SETTINGS

Description
Tax Parameter
Accounts Route
Unit Of Sale

2 CATALOG HIERARCHY

Group
Sub Group
Sub Sub Group
Category

3 PRICING and DISCOUNT

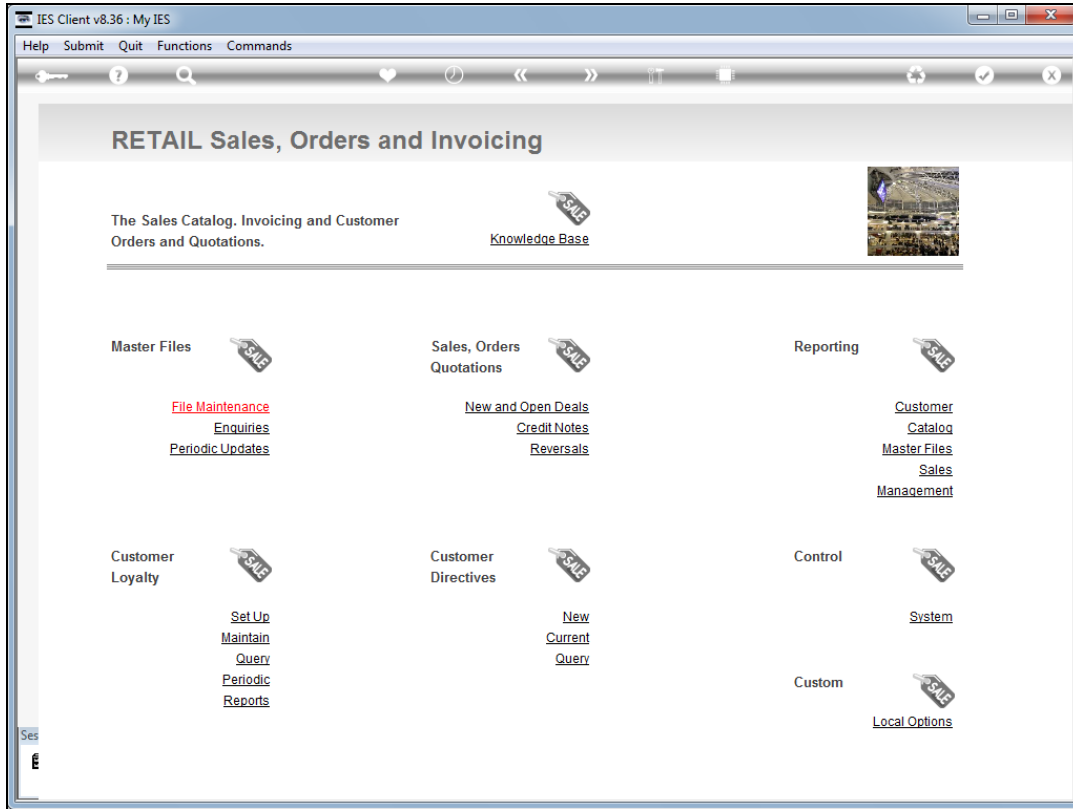
Price Policy
Club Discount
Volume Discount
Loyalty %
Comm %
Custom Formula

4 PHYSICAL LOCATION

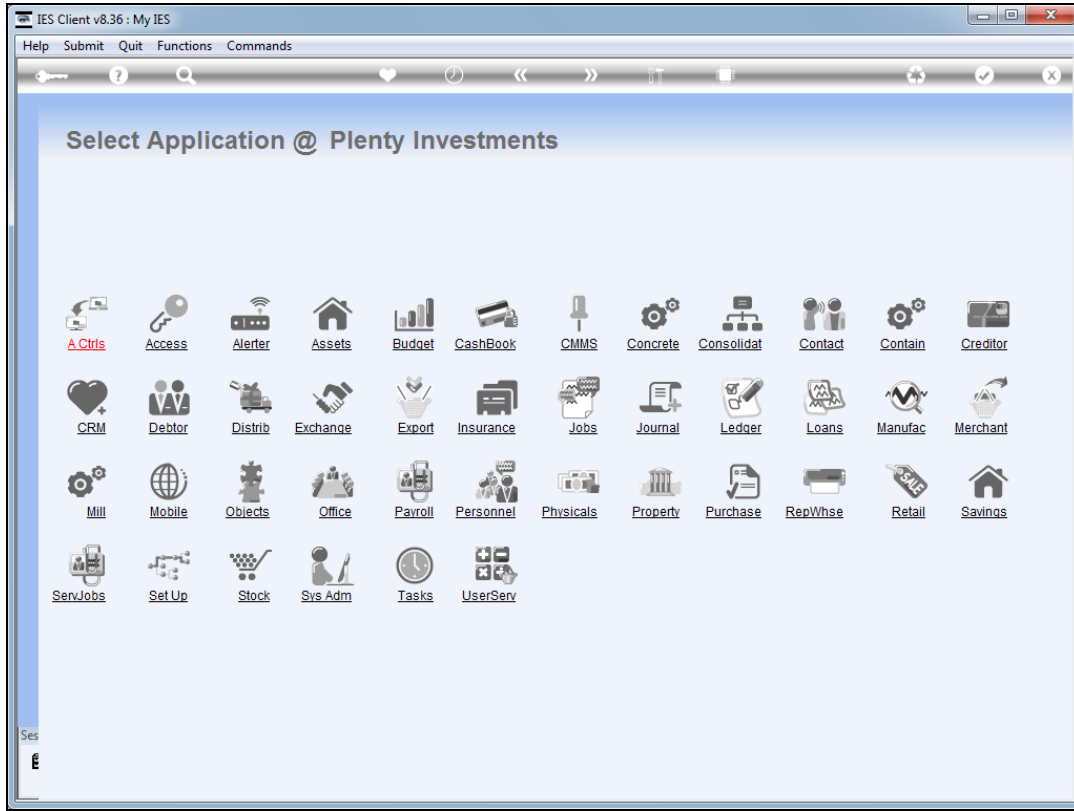
Hint: When a Template is applied for a new Catalogue Item that is not Stock, then there is no Bin. If applied with a Stock Code, then the Bin and Stores list are defaulted from the Stock Item.

Save

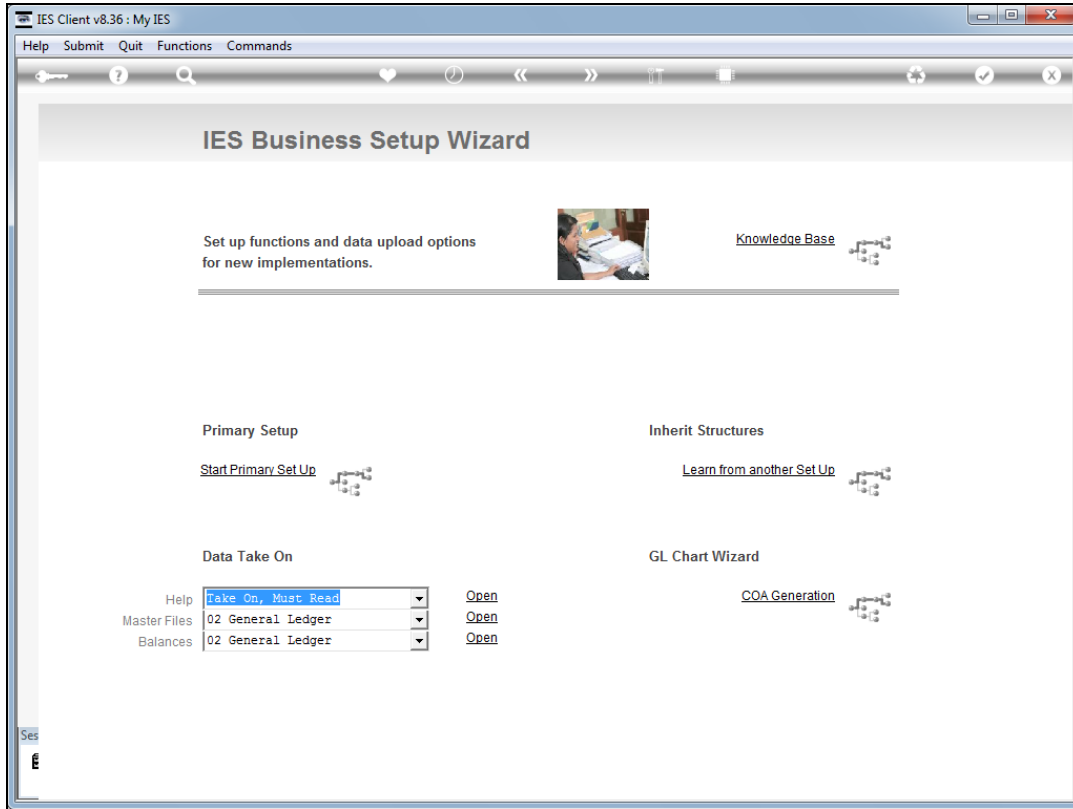
Slide 7
Slide notes:



Slide 8
Slide notes:



Slide 9
Slide notes:



Slide 10

Slide notes: At System Setup, we can import Retail Master file data, or apply "Learn From". This tutorial is a pointer only though, and we should use the regular Retail Tutorials for all matters relating to Retail set up.