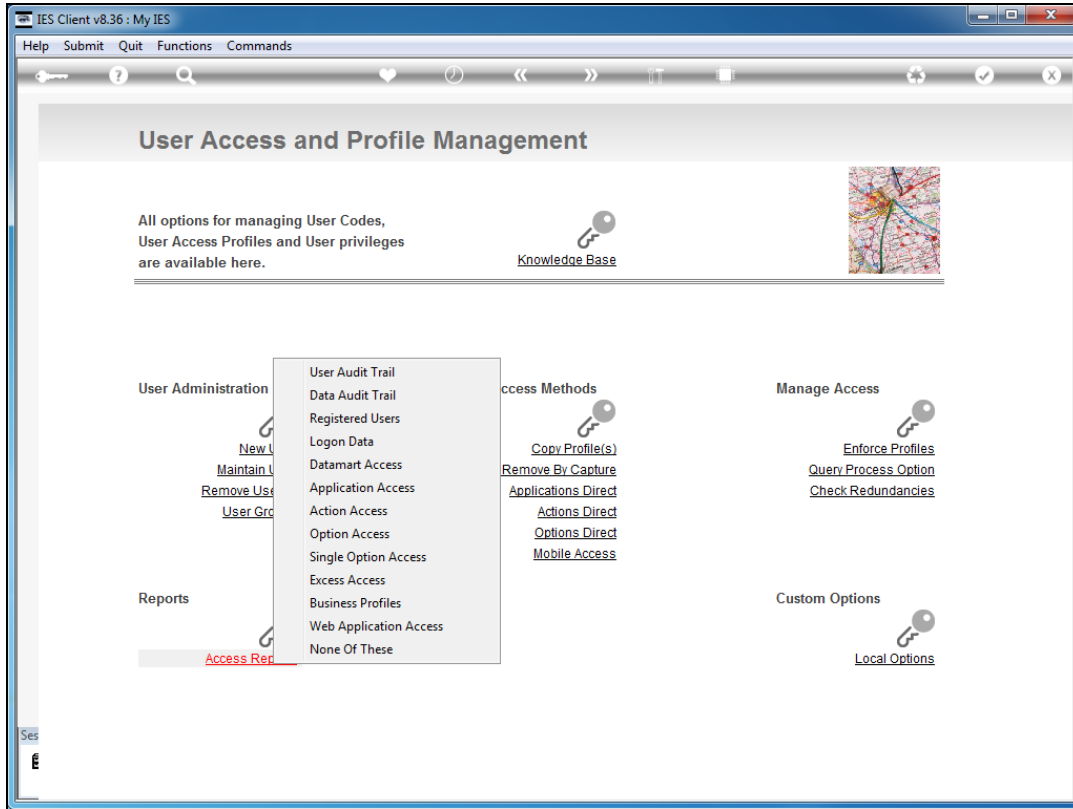
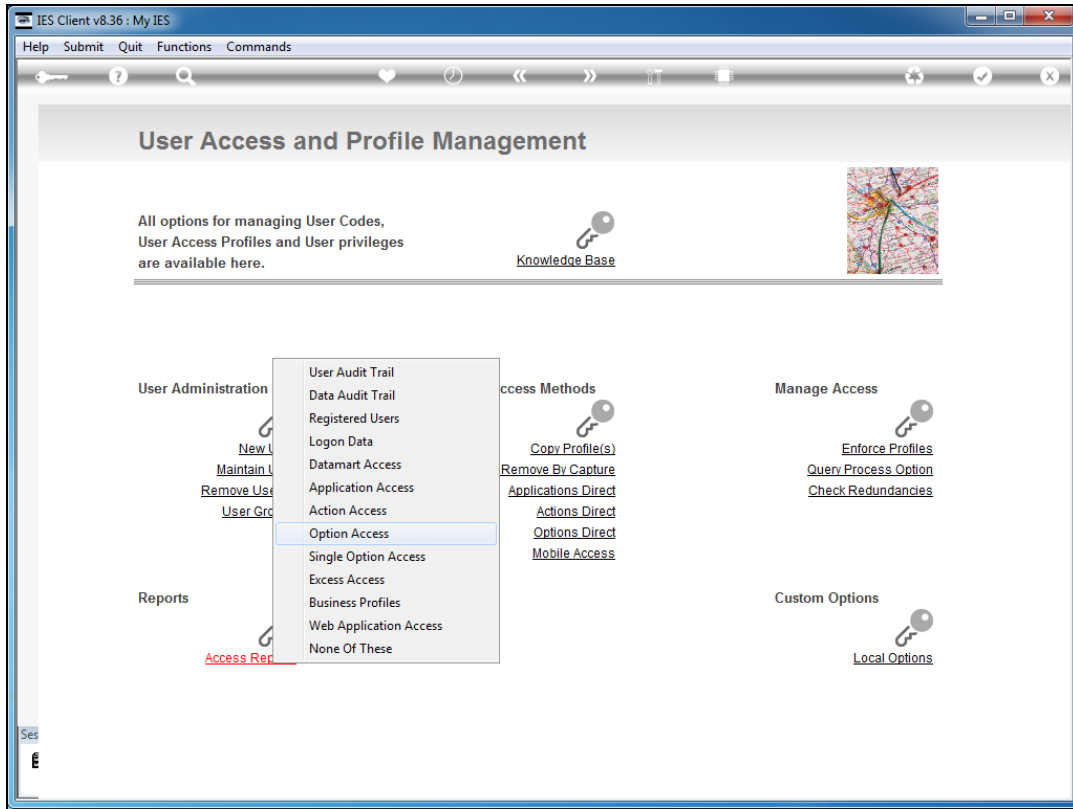


Slide 1

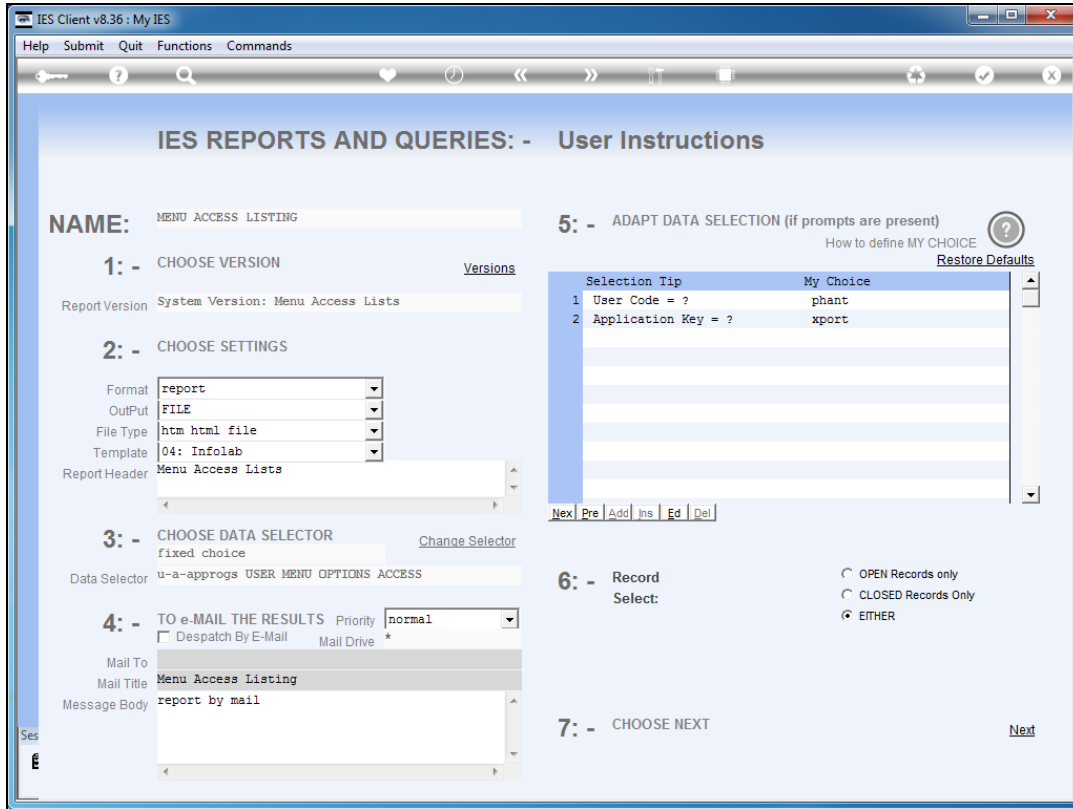
Slide notes: A User of Export Trade workflow will need access to a list of function points in the Module.



Slide 2
Slide notes:

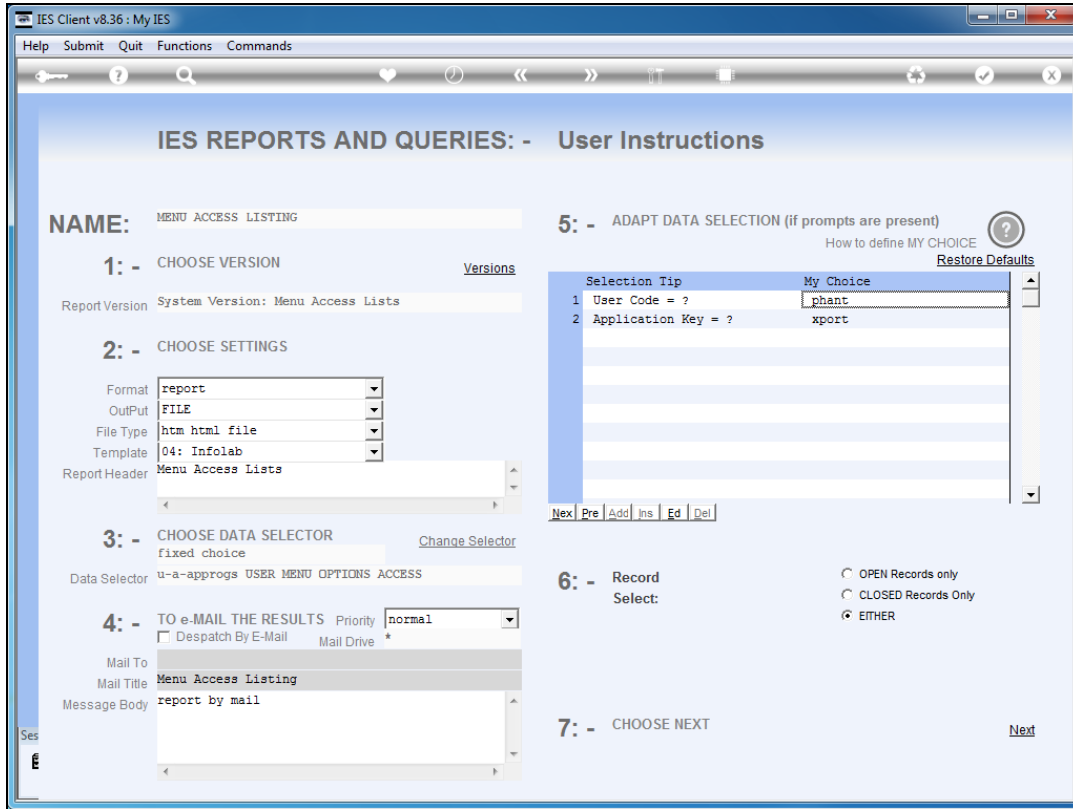


Slide 3
Slide notes:

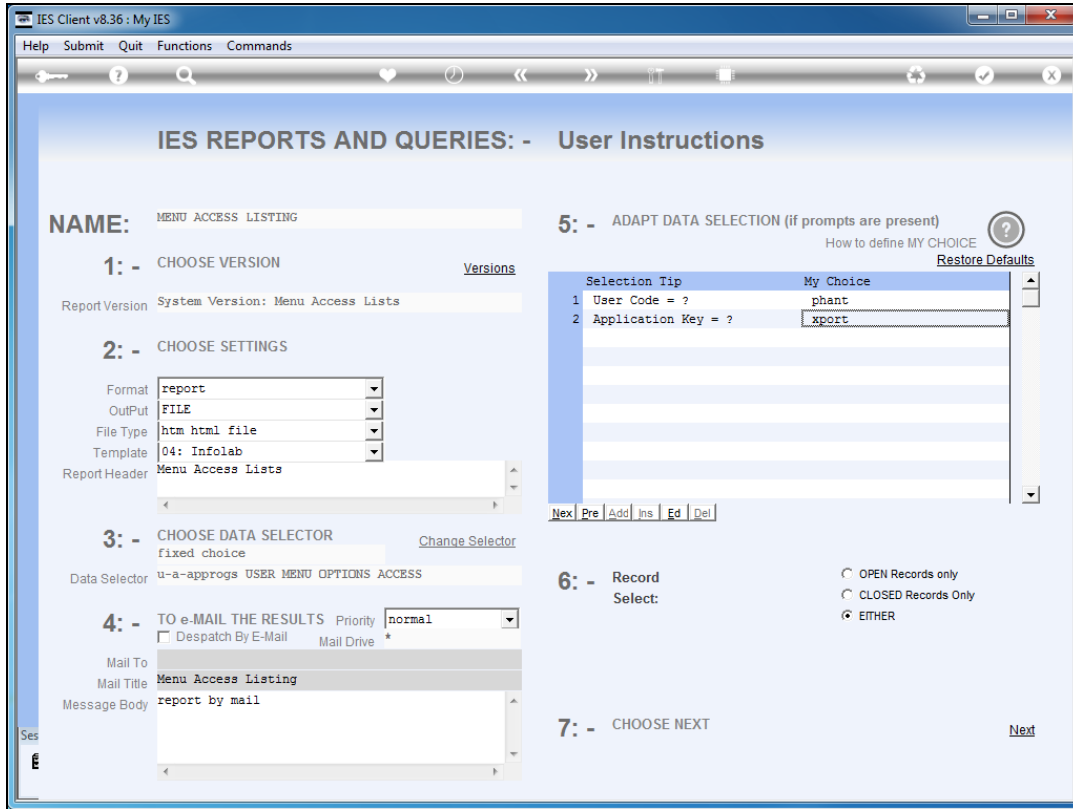


Slide 4

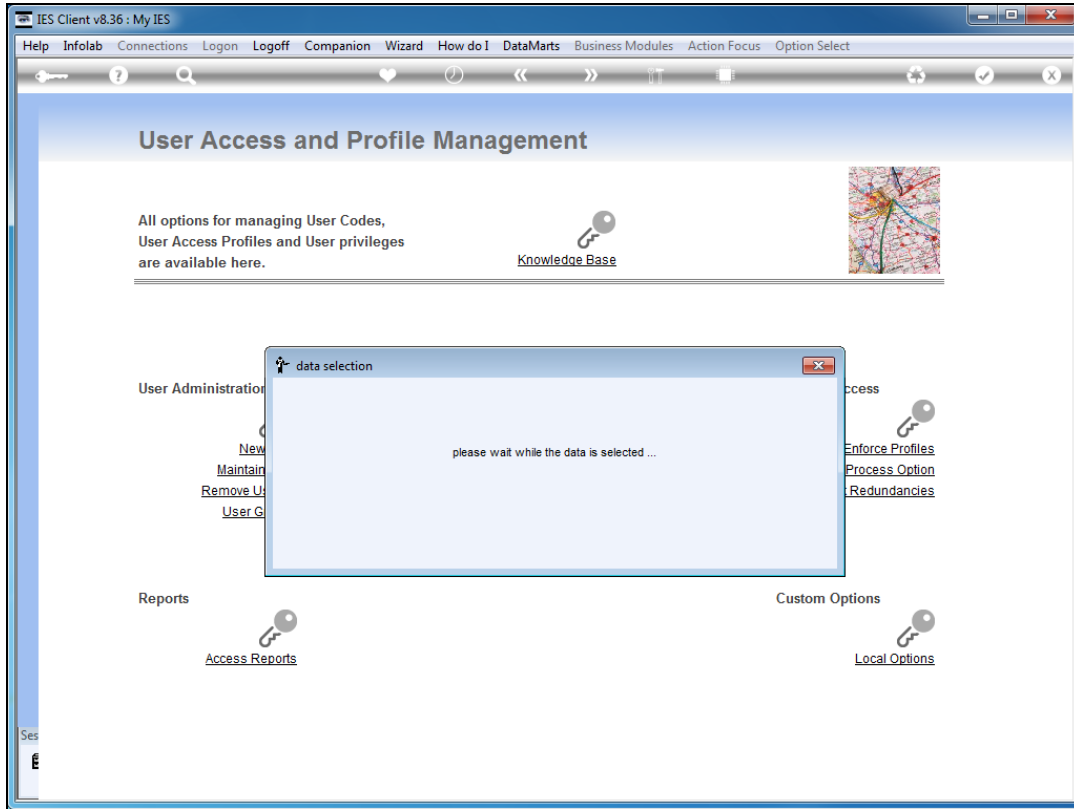
Slide notes: The system User "phant" has a full access profile, from which we can discuss the various options.



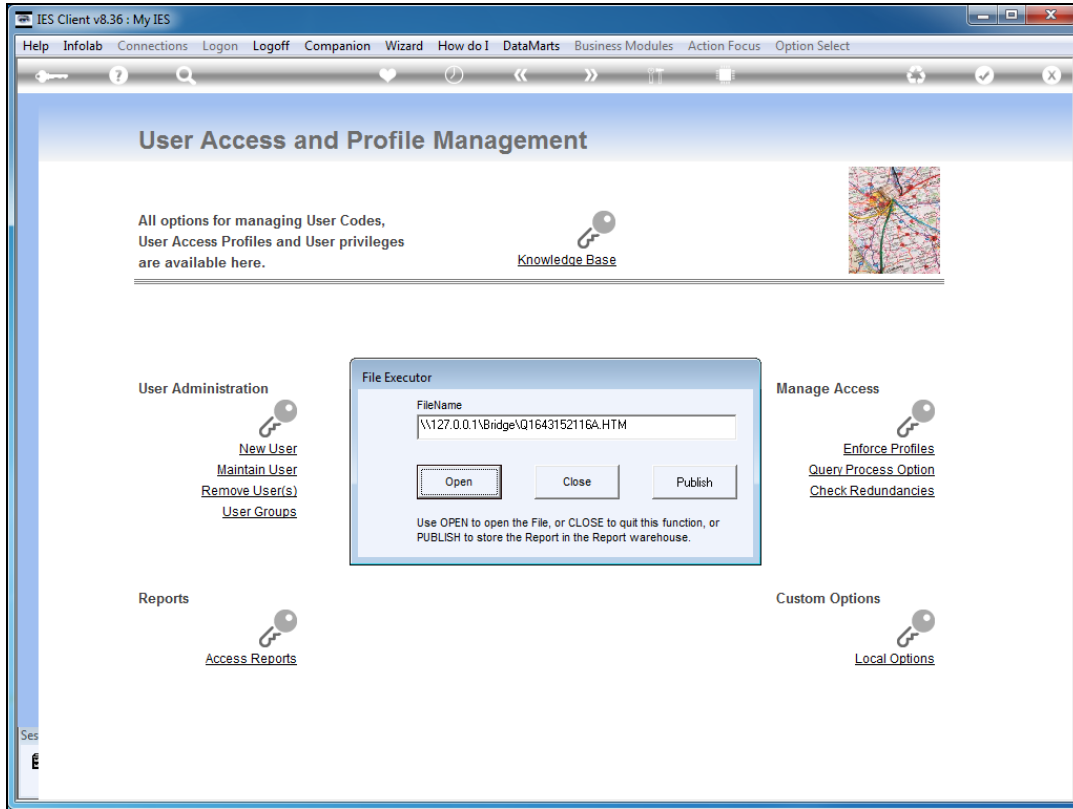
Slide 5
Slide notes:



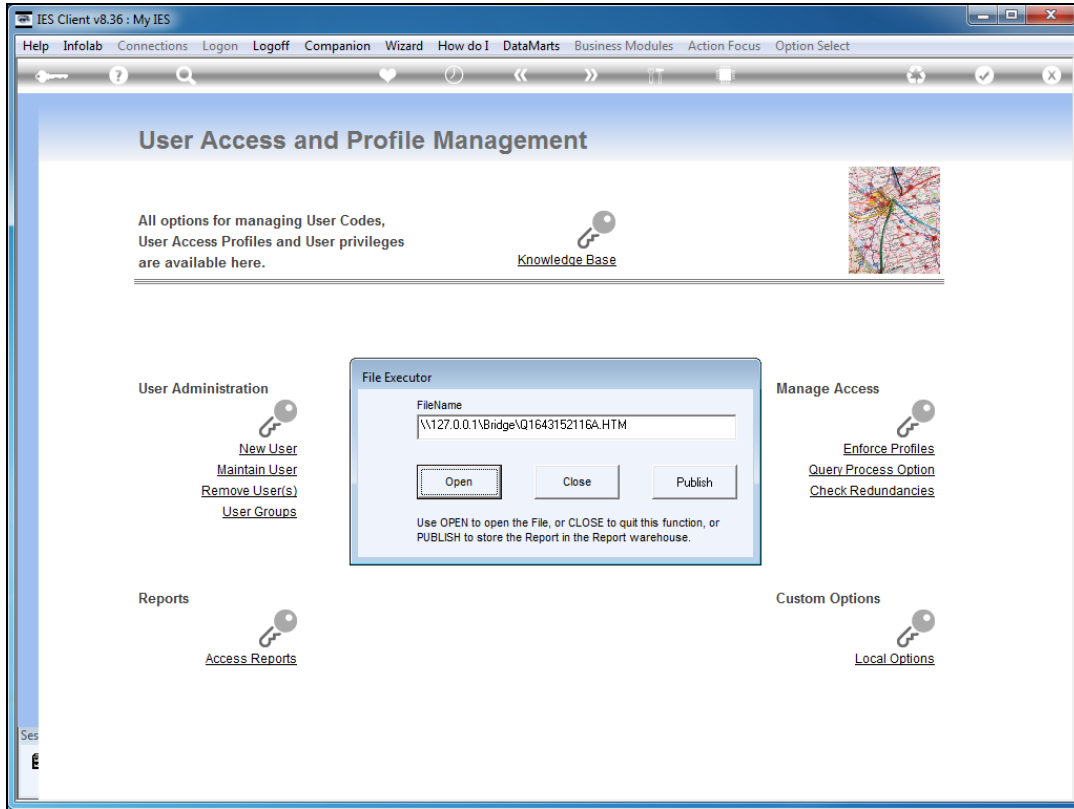
Slide 6
Slide notes:



Slide 7
Slide notes:



Slide 8
Slide notes:



Slide 9
Slide notes:

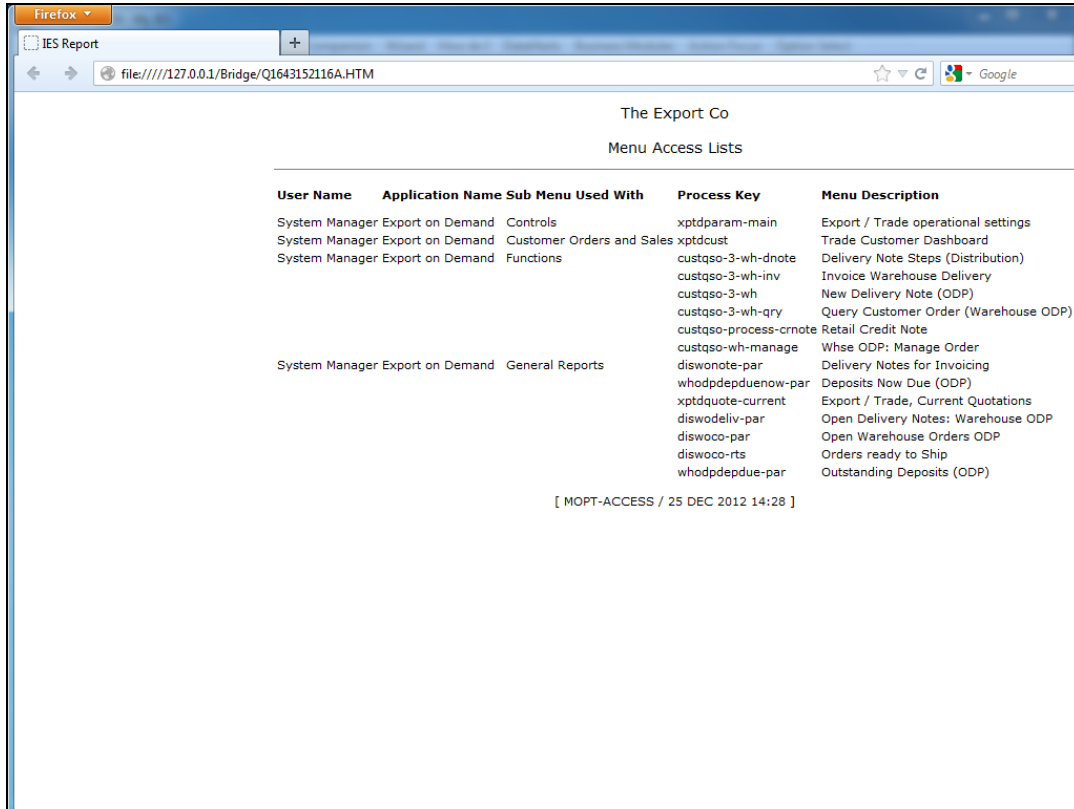
The Export Co
Menu Access Lists

User Name	Application Name	Sub Menu Used With	Process Key	Menu Description
System Manager Export on Demand	Controls		xptdparam-main	Export / Trade operational settings
System Manager Export on Demand	Customer Orders and Sales		xptdcust	Trade Customer Dashboard
System Manager Export on Demand	Functions		custqso-3-wh-dnote	Delivery Note Steps (Distribution)
			custqso-3-wh-inv	Invoice Warehouse Delivery
			custqso-3-wh	New Delivery Note (ODP)
			custqso-3-wh-qry	Query Customer Order (Warehouse ODP)
			custqso-process-crnote	Retail Credit Note
			custqso-wh-manage	Whse ODP: Manage Order
System Manager Export on Demand	General Reports		diswonote-par	Delivery Notes for Invoicing
			whodpdepduenow-par	Deposits Now Due (ODP)
			xptdquote-current	Export / Trade, Current Quotations
			diswodriv-par	Open Delivery Notes: Warehouse ODP
			diswoco-par	Open Warehouse Orders ODP
			diswoco-rts	Orders ready to Ship
			whodpdepdue-par	Outstanding Deposits (ODP)

[MOPT-ACCESS / 25 DEC 2012 14:28]

Slide 10

Slide notes: The Operational Settings option is not required for all Users, only the Administrator.



User Name	Application Name	Sub Menu Used With	Process Key	Menu Description
System Manager Export on Demand	Controls		xtpdparam-main	Export / Trade operational settings
System Manager Export on Demand	Customer Orders and Sales		xptdcust	Trade Customer Dashboard
System Manager Export on Demand	Functions		custqso-3-wh-dnote	Delivery Note Steps (Distribution)
			custqso-3-wh-inv	Invoice Warehouse Delivery
			custqso-3-wh	New Delivery Note (ODP)
			custqso-3-wh-qry	Query Customer Order (Warehouse ODP)
			custqso-process-crnote	Retail Credit Note
			custqso-wh-manage	Whse ODP: Manage Order
System Manager Export on Demand	General Reports		diswonote-par	Delivery Notes for Invoicing
			whodpdepduenow-par	Deposits Now Due (ODP)
			xptdquote-current	Export / Trade, Current Quotations
			diswodriv-par	Open Delivery Notes: Warehouse ODP
			diswoco-par	Open Warehouse Orders ODP
			diswoco-rts	Orders ready to Ship
			whodpdepdue-par	Outstanding Deposits (ODP)

[MOPT-ACCESS / 25 DEC 2012 14:28]

Slide 11

Slide notes: The Customer Dashboard option is a must - without it, there is little one can do at Export Trade.

The Export Co
Menu Access Lists

User Name	Application Name	Sub Menu Used With	Process Key	Menu Description
System Manager Export on Demand	Controls		xptdparam-main	Export / Trade operational settings
System Manager Export on Demand	Customer Orders and Sales		xptdcust	Trade Customer Dashboard
System Manager Export on Demand	Functions		custqso-3-wh-dnote	Delivery Note Steps (Distribution)
			custqso-3-wh-inv	Invoice Warehouse Delivery
			custqso-3-wh	New Delivery Note (ODP)
			custqso-3-wh-qry	Query Customer Order (Warehouse ODP)
			custqso-process-crnote	Retail Credit Note
			custqso-wh-manage	Whse ODP: Manage Order
			diswonote-par	Delivery Notes for Invoicing
System Manager Export on Demand	General Reports		whodpdpduenow-par	Deposits Now Due (ODP)
			xptdquote-current	Export / Trade, Current Quotations
			diswodriv-par	Open Delivery Notes: Warehouse ODP
			diswoco-par	Open Warehouse Orders ODP
			diswoco-rts	Orders ready to Ship
			whodpdpdue-par	Outstanding Deposits (ODP)

[MOPT-ACCESS / 25 DEC 2012 14:28]

Slide 12

Slide notes: The Functions Action menu contain the options for processing the Sales Order steps, i.e. Delivery, Invoicing, etc. It depends on the workflow arrangements at the site whether the User will have all of these options or not.

The Export Co
Menu Access Lists

User Name	Application Name	Sub Menu Used With	Process Key	Menu Description
System Manager Export on Demand	Controls		xptdparam-main	Export / Trade operational settings
System Manager Export on Demand	Customer Orders and Sales		xptdcust	Trade Customer Dashboard
System Manager Export on Demand	Functions		custqso-3-wh-dnote	Delivery Note Steps (Distribution)
			custqso-3-wh-inv	Invoice Warehouse Delivery
			custqso-3-wh	New Delivery Note (ODP)
			custqso-3-wh-qry	Query Customer Order (Warehouse ODP)
			custqso-process-crnote	Retail Credit Note
			custqso-wh-manage	Whse ODP: Manage Order
System Manager Export on Demand	General Reports		diswonote-par	Delivery Notes for Invoicing
			whodpdepduenow-par	Deposits Now Due (ODP)
			xptdquote-current	Export / Trade, Current Quotations
			diswodriv-par	Open Delivery Notes: Warehouse ODP
			diswoco-par	Open Warehouse Orders ODP
			diswoco-rts	Orders ready to Ship
			whodpdepdue-par	Outstanding Deposits (ODP)

[MOPT-ACCESS / 25 DEC 2012 14:28]

Slide 13

Slide notes: The Report options will usually be available to all Users of Export Trade.

The Export Co
Menu Access Lists

User Name	Application Name	Sub Menu Used With	Process Key	Menu Description
System Manager Export on Demand	Controls		xptdparam-main	Export / Trade operational settings
System Manager Export on Demand	Customer Orders and Sales		xptdcust	Trade Customer Dashboard
System Manager Export on Demand	Functions		custqso-3-wh-dnote	Delivery Note Steps (Distribution)
			custqso-3-wh-inv	Invoice Warehouse Delivery
			custqso-3-wh	New Delivery Note (ODP)
			custqso-3-wh-qry	Query Customer Order (Warehouse ODP)
			custqso-process-crnote	Retail Credit Note
			custqso-wh-manage	Whse ODP: Manage Order
System Manager Export on Demand	General Reports		diswonote-par	Delivery Notes for Invoicing
			whodpdepduenow-par	Deposits Now Due (ODP)
			xptdquote-current	Export / Trade, Current Quotations
			diswodeliv-par	Open Delivery Notes: Warehouse ODP
			diswoco-par	Open Warehouse Orders ODP
			diswoco-rts	Orders ready to Ship
			whodpdepdue-par	Outstanding Deposits (ODP)

[MOPT-ACCESS / 25 DEC 2012 14:28]

Slide 14
Slide notes: