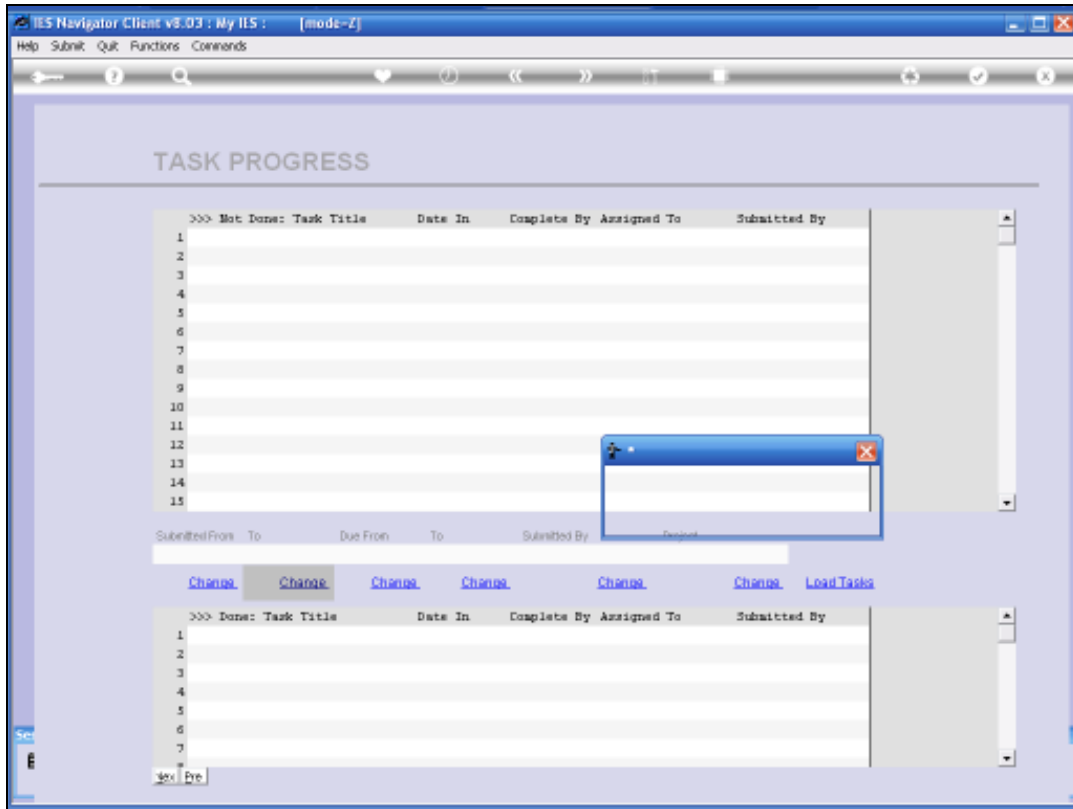
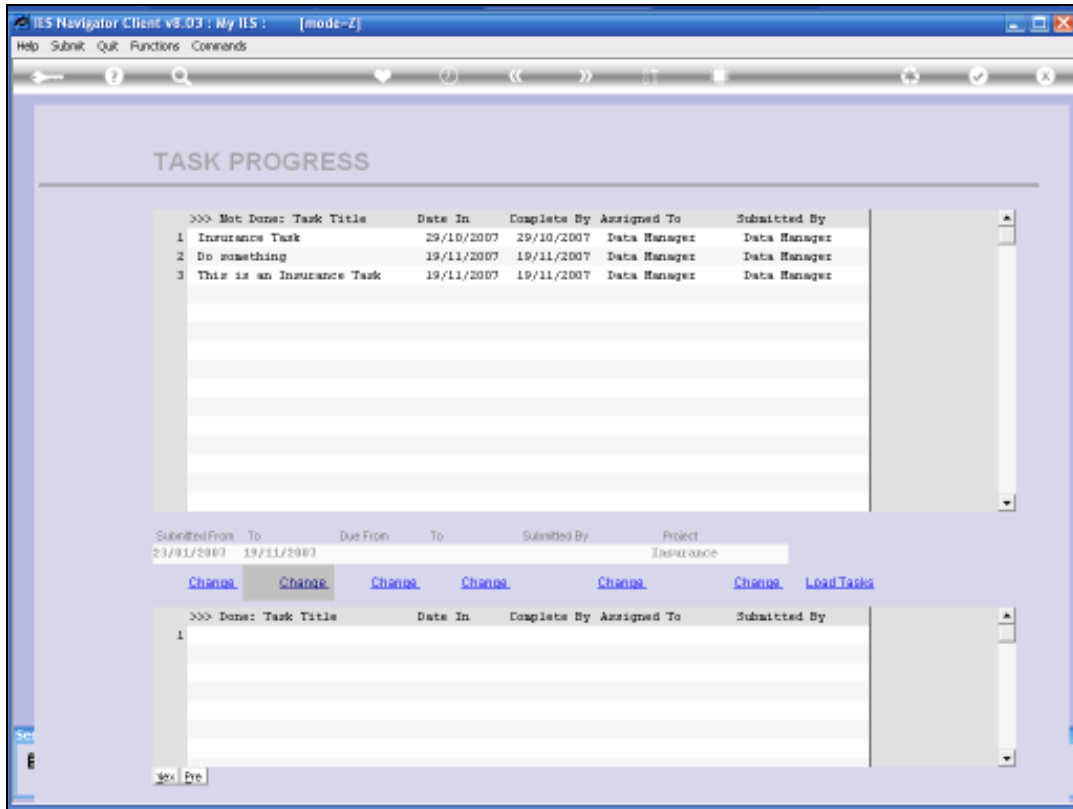


Slide 1

We have a "Check Progress" Option to evaluate the status of the Tasks in the Insurance queue and of course we will be able to see the Tasks that remain to be completed and also Tasks that have already been completed.



Slide 2



Slide 3

The Tasks are initially loaded on default Date-settings, but we can make a Re-selection by changing any of the Current Selection Values and the reload the Tasks.

In other words, if we want to go back further in history than the default loading of these Tasks.

The screenshot shows a web browser window titled "IES Navigator Client v8.03 : My IIS : [mode-Z]". The browser address bar is empty. The main content area is titled "TASK PROGRESS" and contains a table of tasks. Below the table is a filter section with fields for "Submitted From", "To", "Due From", "To", "Submitted By", and "Project". Below the filter are several "Change" buttons and a "LoadTasks" button. At the bottom of the page, there is a "Done" table with one row.

>>> Not Done:	Task Title	Date In	Complete By	Assigned To	Submitted By
1	Insurance Task	29/10/2007	29/10/2007	Data Manager	Data Manager
2	Do something	19/11/2007	19/11/2007	Data Manager	Data Manager
3	This is an Insurance Task	19/11/2007	19/11/2007	Data Manager	Data Manager

Submitted From: To: Due From: To: Submitted By: Project  
23/01/2007 19/11/2007 Insurance

[Change](#) [Change](#) [Change](#) [Change](#) [Change](#) [Change](#) [LoadTasks](#)

>>> Done:	Task Title	Date In	Complete By	Assigned To	Submitted By
1					

Slide 4