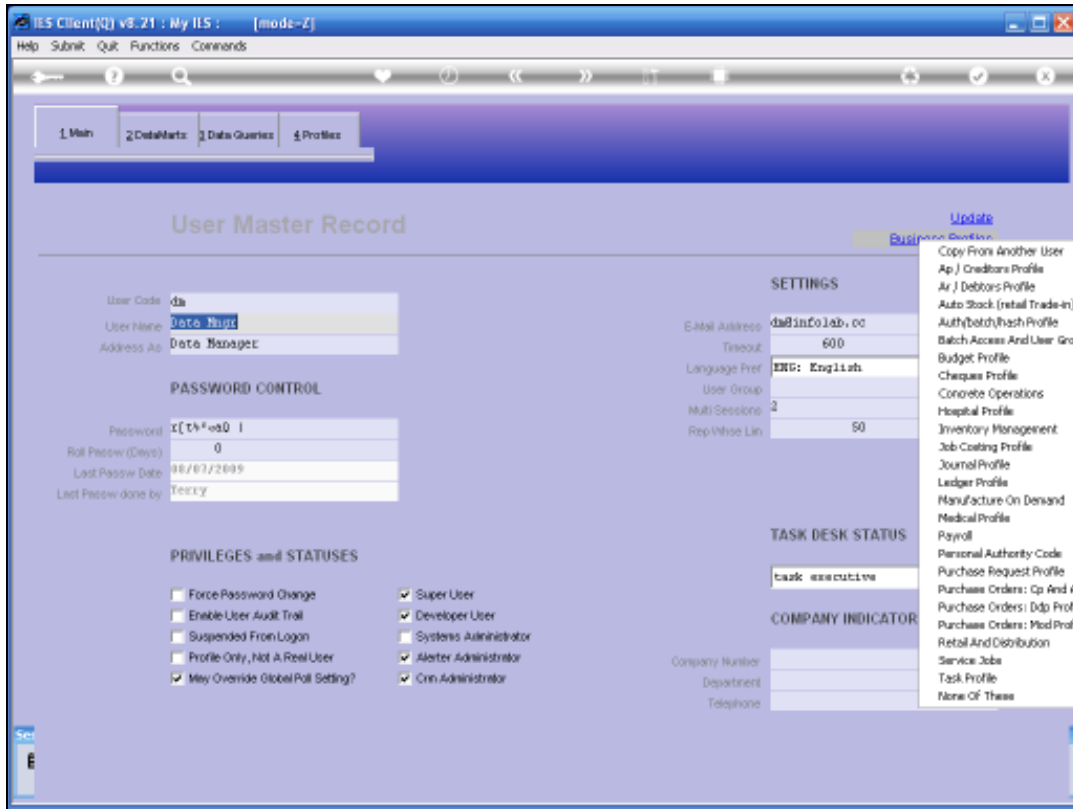


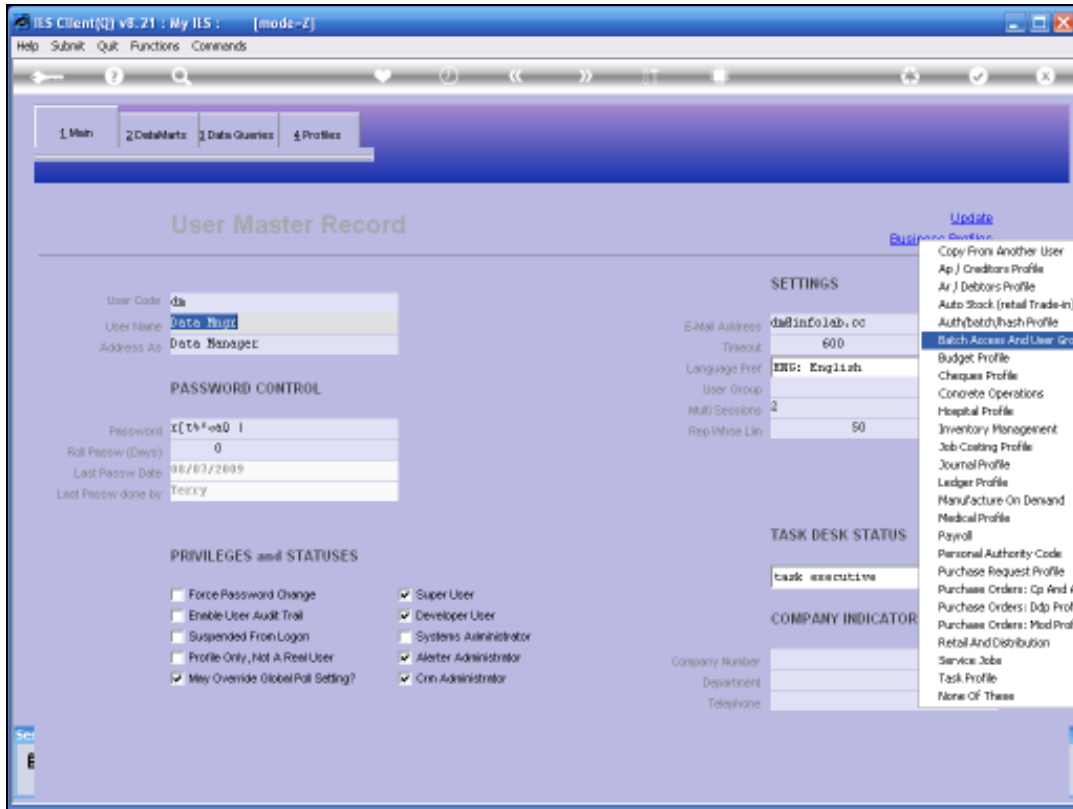
Slide 1

Slide notes: Every User is affected by 2 Business Profiles with regards to Batch Numbers, access to Batches, and whether Batch Numbers are forced for capture for the User or not.



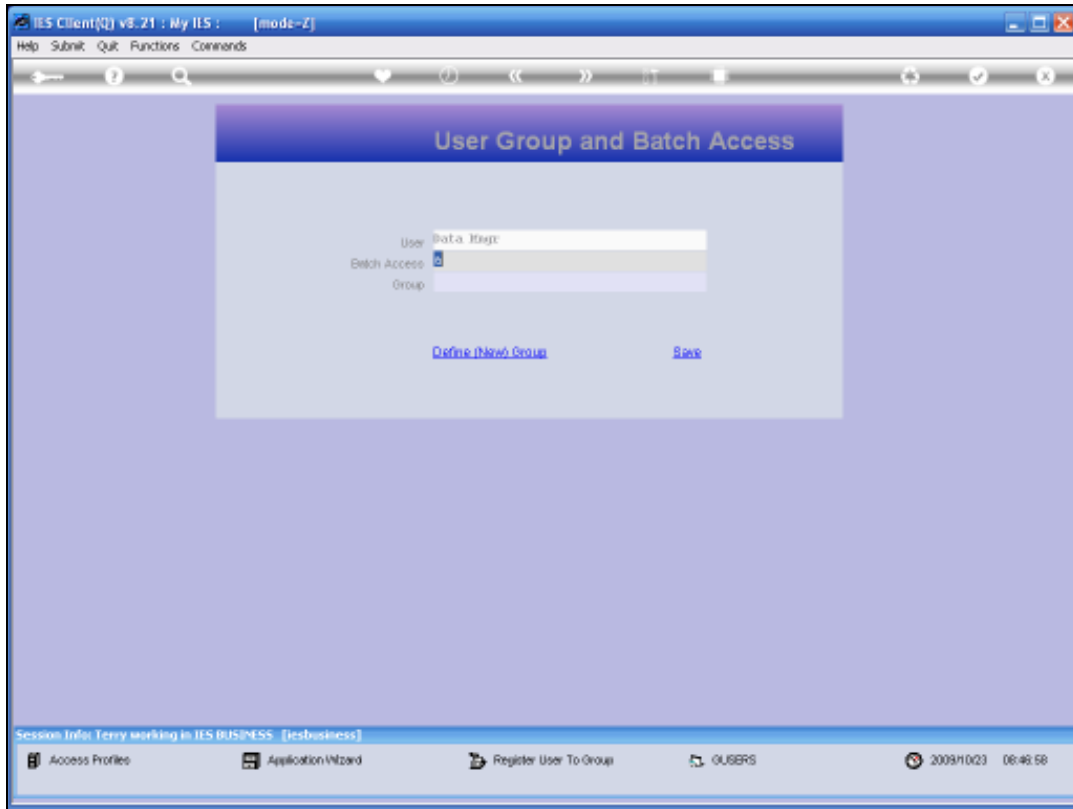
Slide 2

Slide notes: These Business Profiles are part of the User Access Management set and found at the User Master Record, where we choose the 'Business Profiles' function to access them.



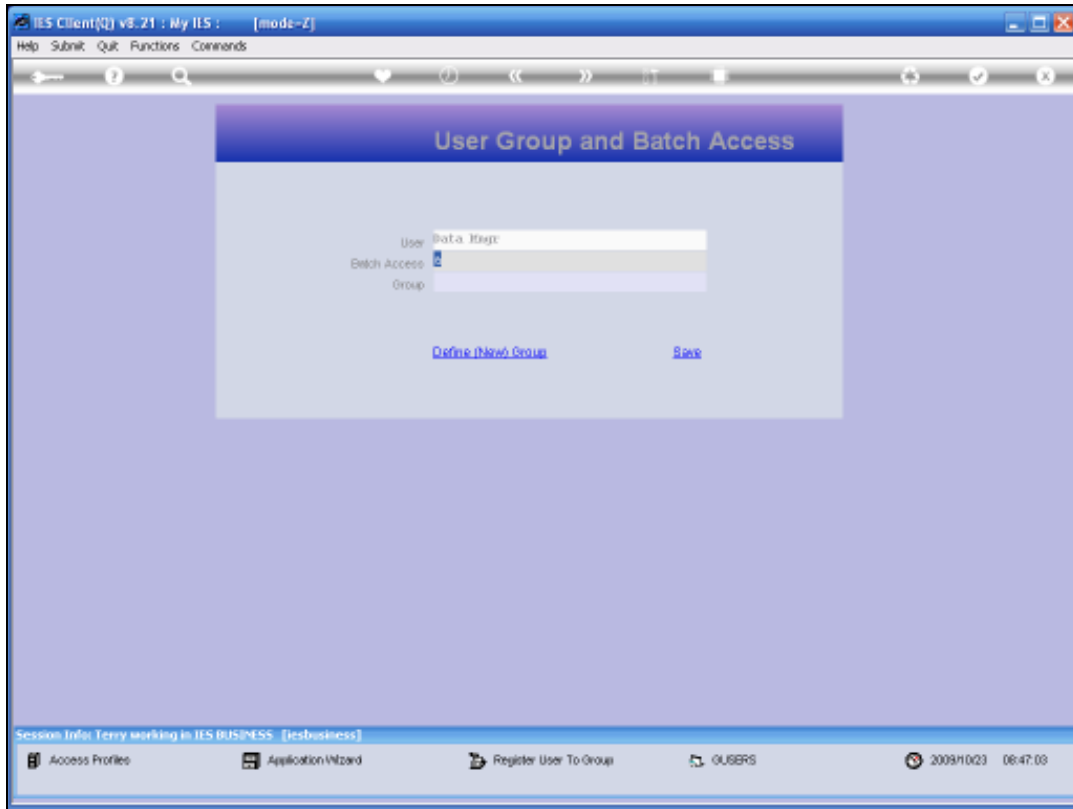
Slide 3

Slide notes: First, we look at the 'Batch Access and User Group' profile.

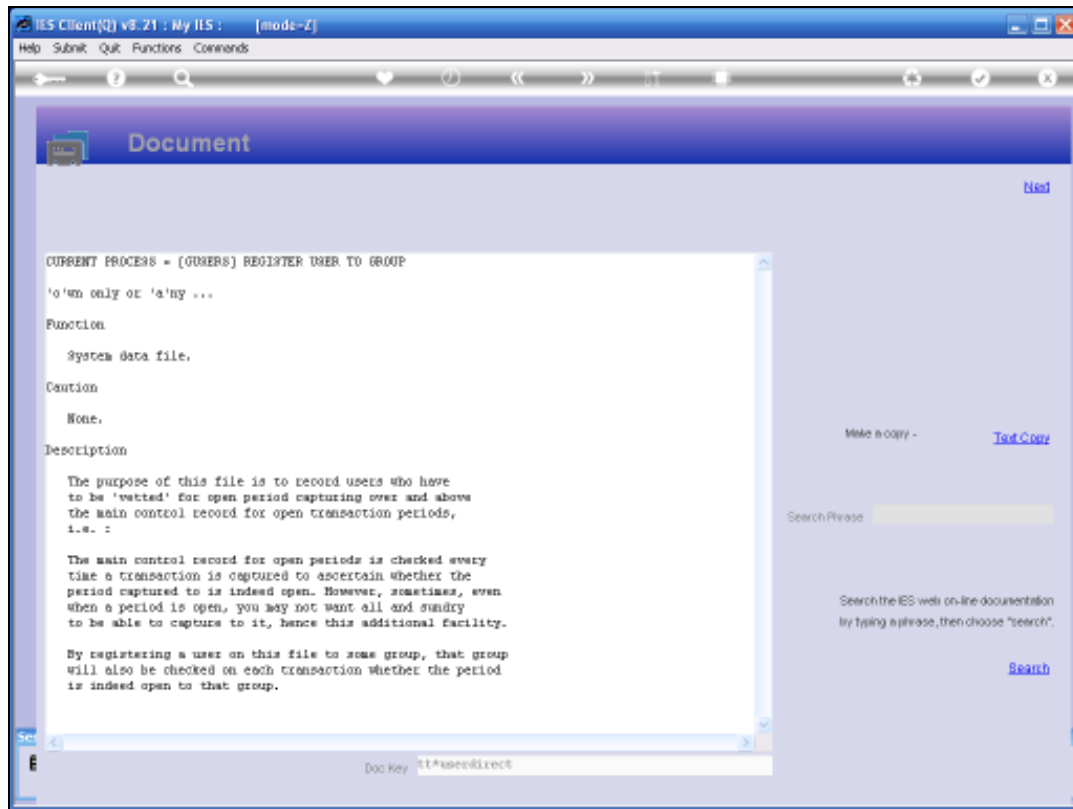


Slide 4

Slide notes: The 'Batch Access' field is of interest here, and it determines whether the User may operate on his or her own Batches only, or on any Batches.

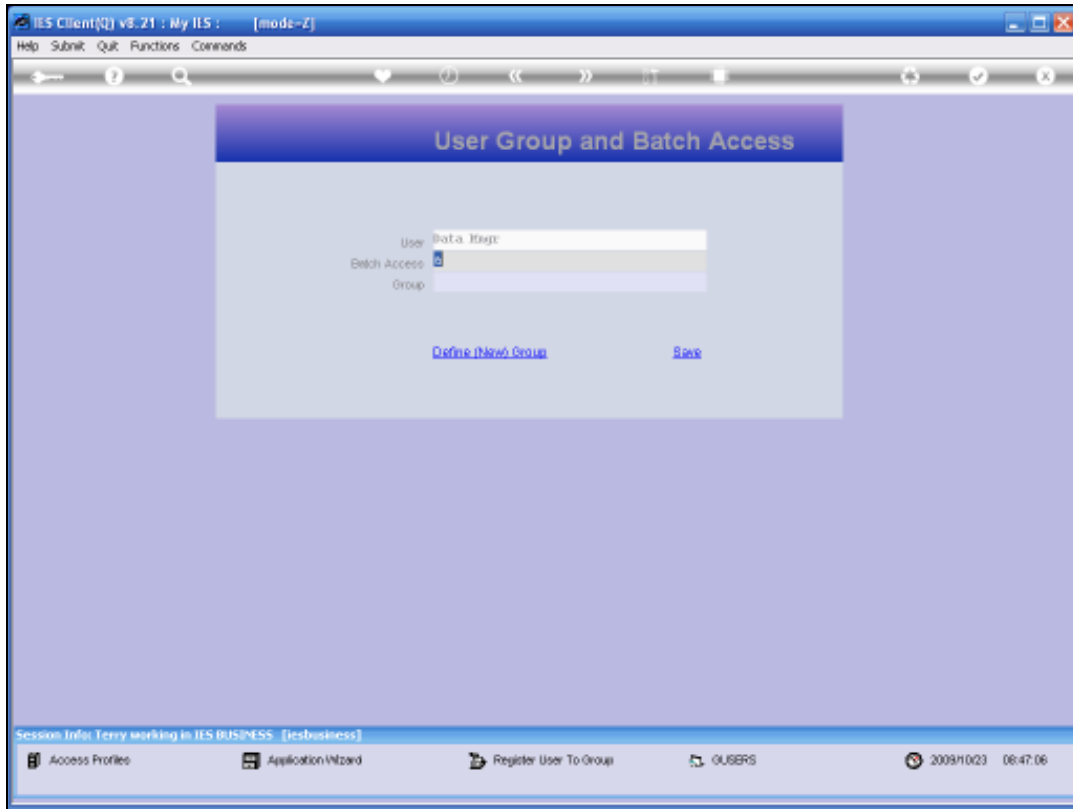


Slide 5
Slide notes:

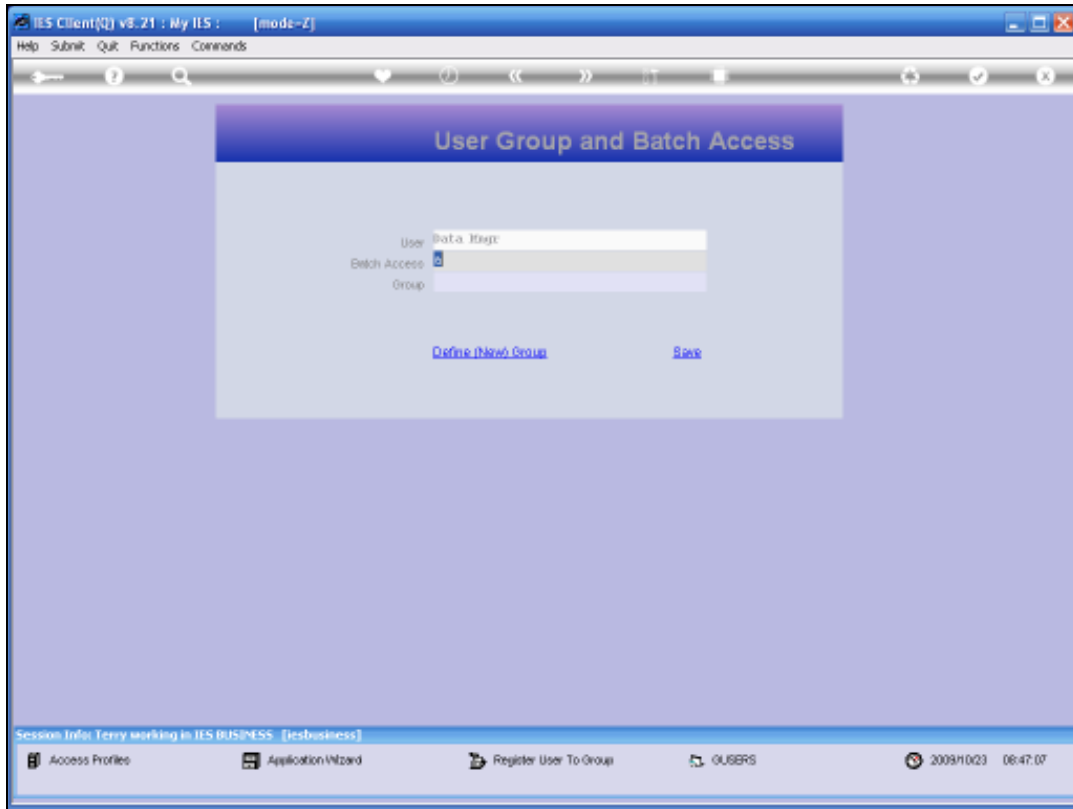


Slide 6

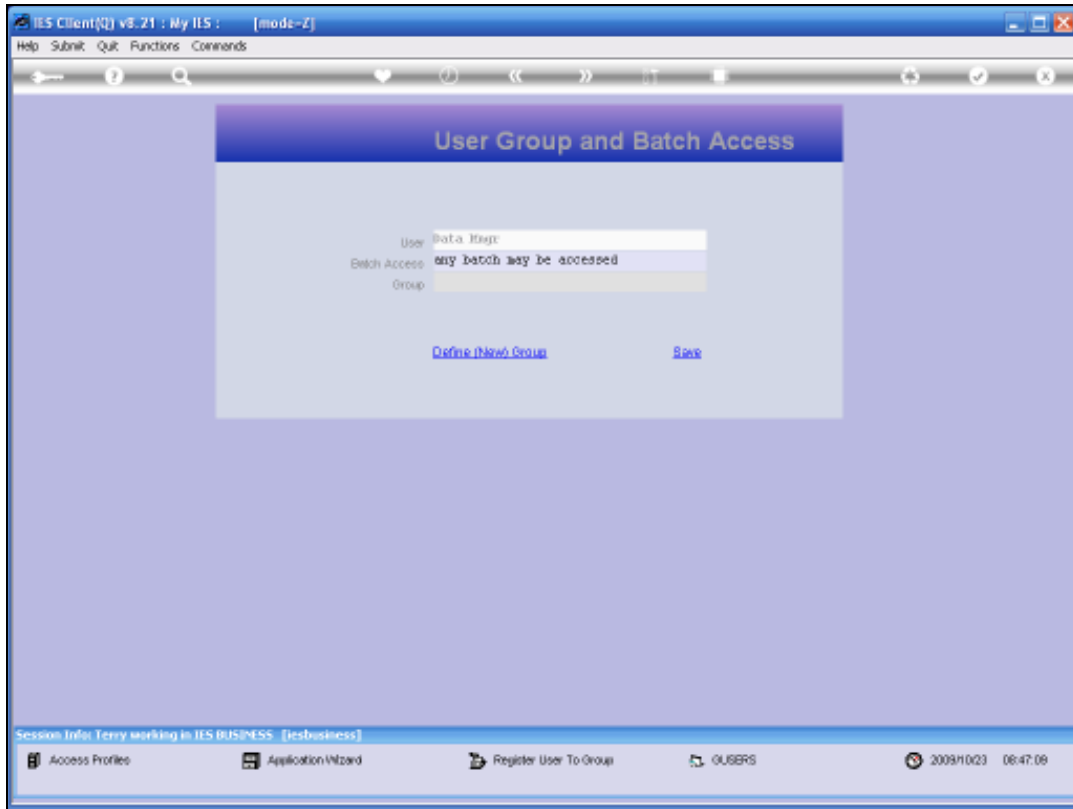
Slide notes: The Help shows that we can set the parameter to OWN or ANY.



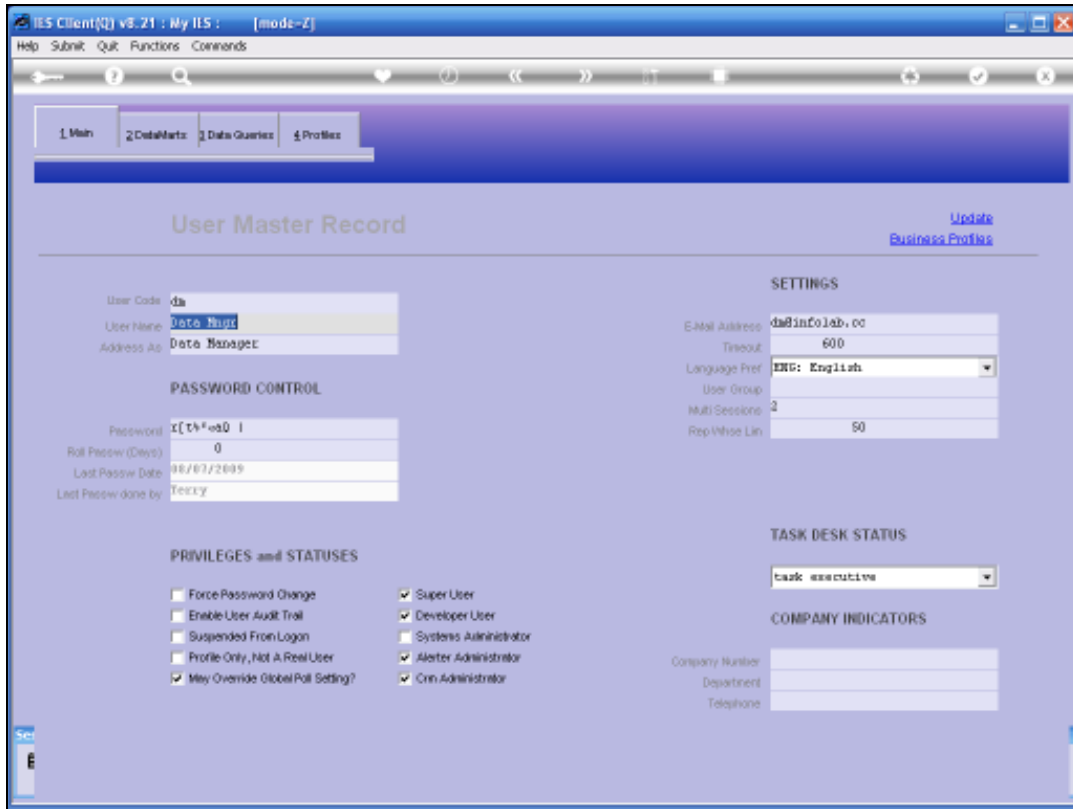
Slide 7
Slide notes:



Slide 8
Slide notes:

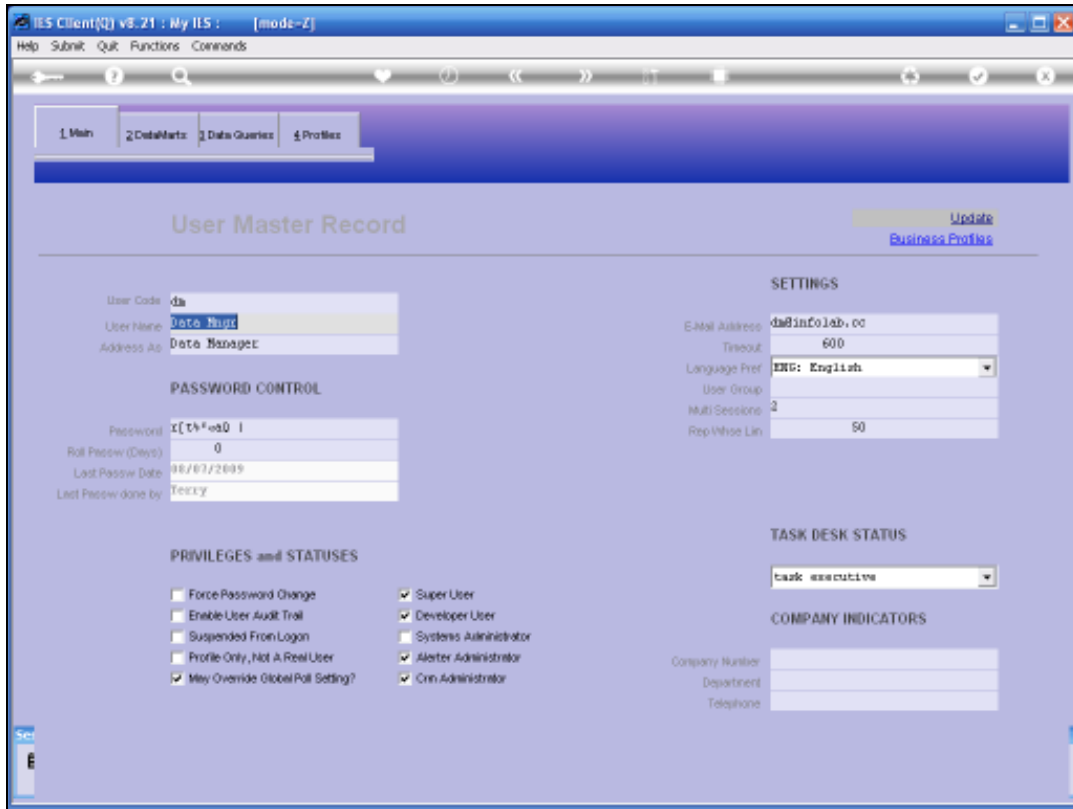


Slide 9
Slide notes:

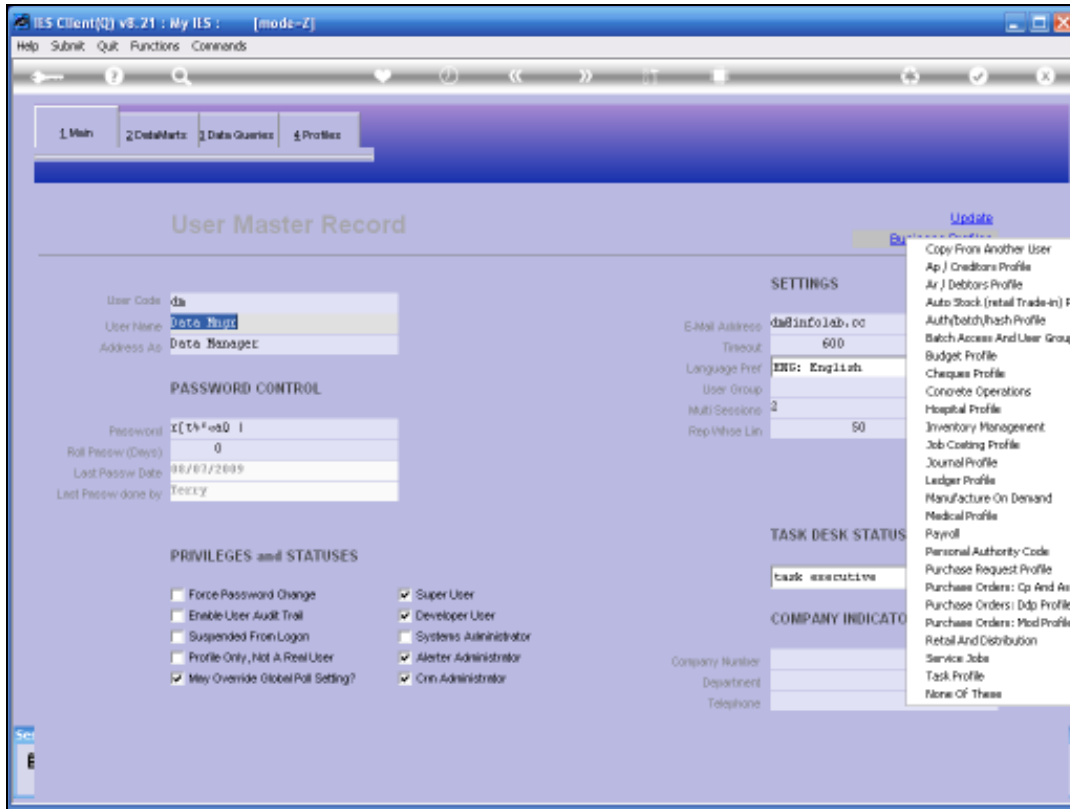


Slide 10

Slide notes:

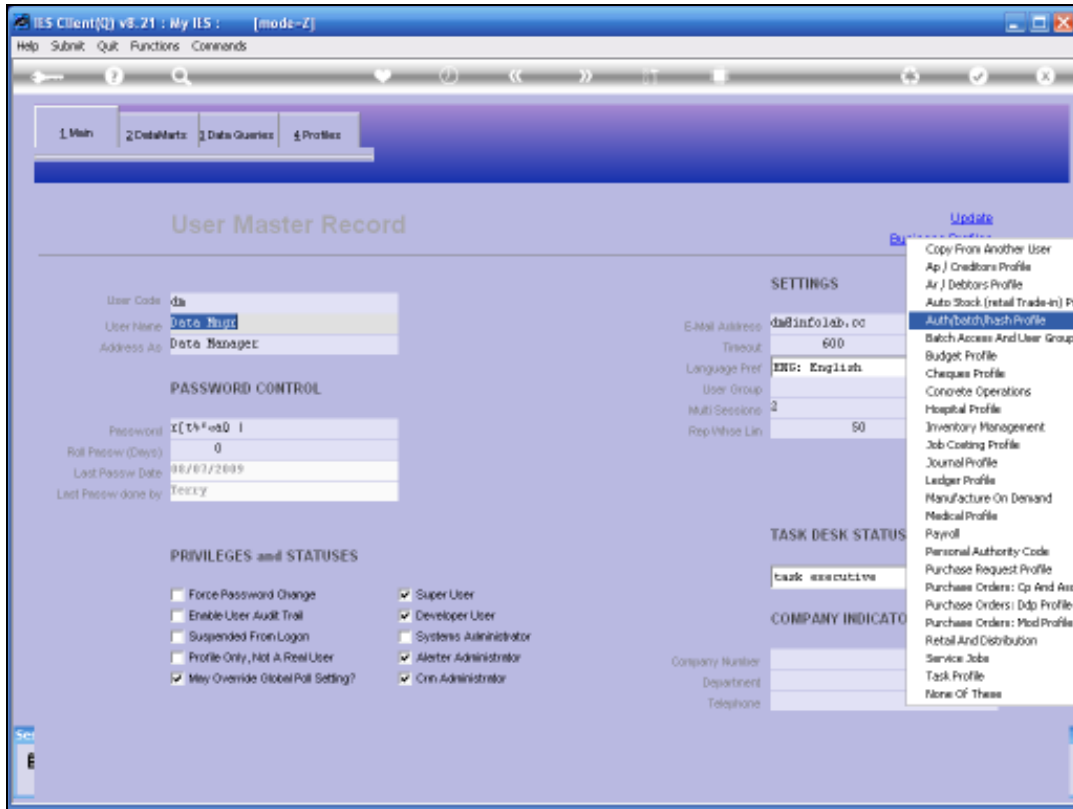


Slide 11
Slide notes:

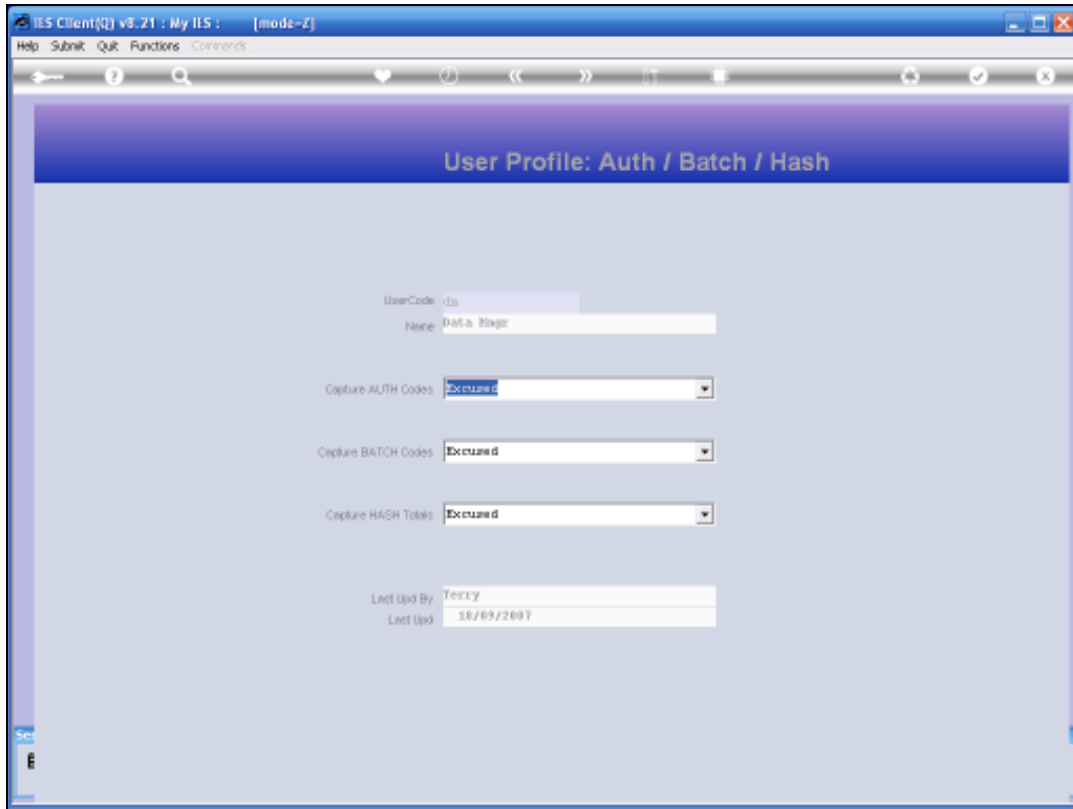


Slide 12

Slide notes: And the next Business Profile of interest with regards to Batch Numbers is the AUTH/BATCH/HASH profile.

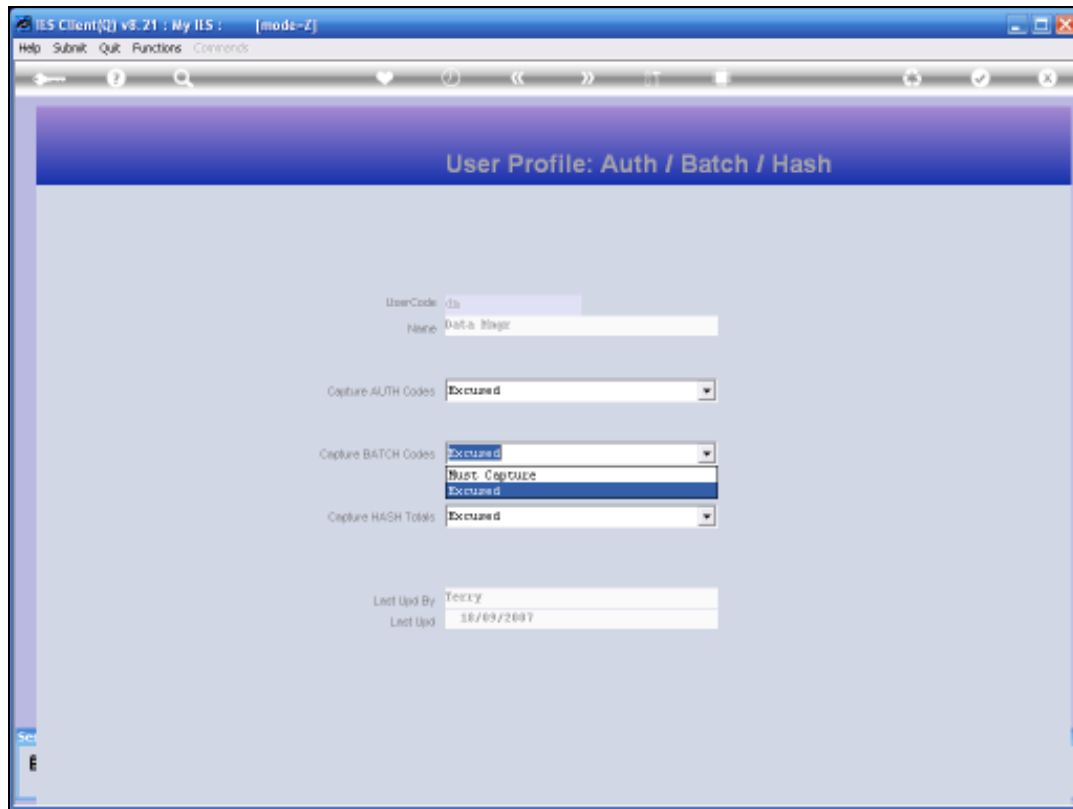


Slide 13
Slide notes:



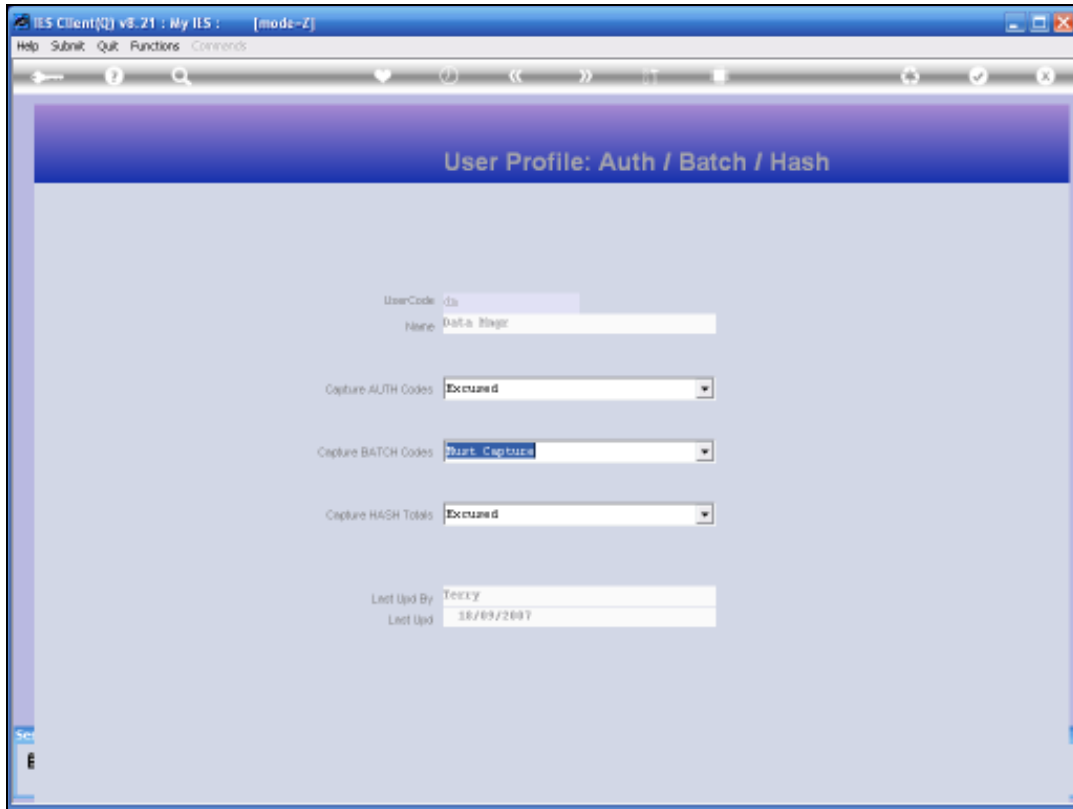
Slide 14

Slide notes: This profile regulates the capturing of control fields for a User, and the Batch Number is among these control fields.



Slide 15

Slide notes: The Batch Code control can be set to EXCUSED or to MUST CAPTURE. If it is set to EXCUSED, then the User cannot access a Batch Number field on a Journal screen, does not have to and cannot capture a Batch Number. If it is set to MUST CAPTURE, then the User is forced to use a Batch Number on any Journal, but of course only if the Batch System itself is switched ON for the system. As we will see in another tutorial on Batch Numbers, the Batch Number system can be switched ON and OFF for all Users.



Slide 16

Slide notes: