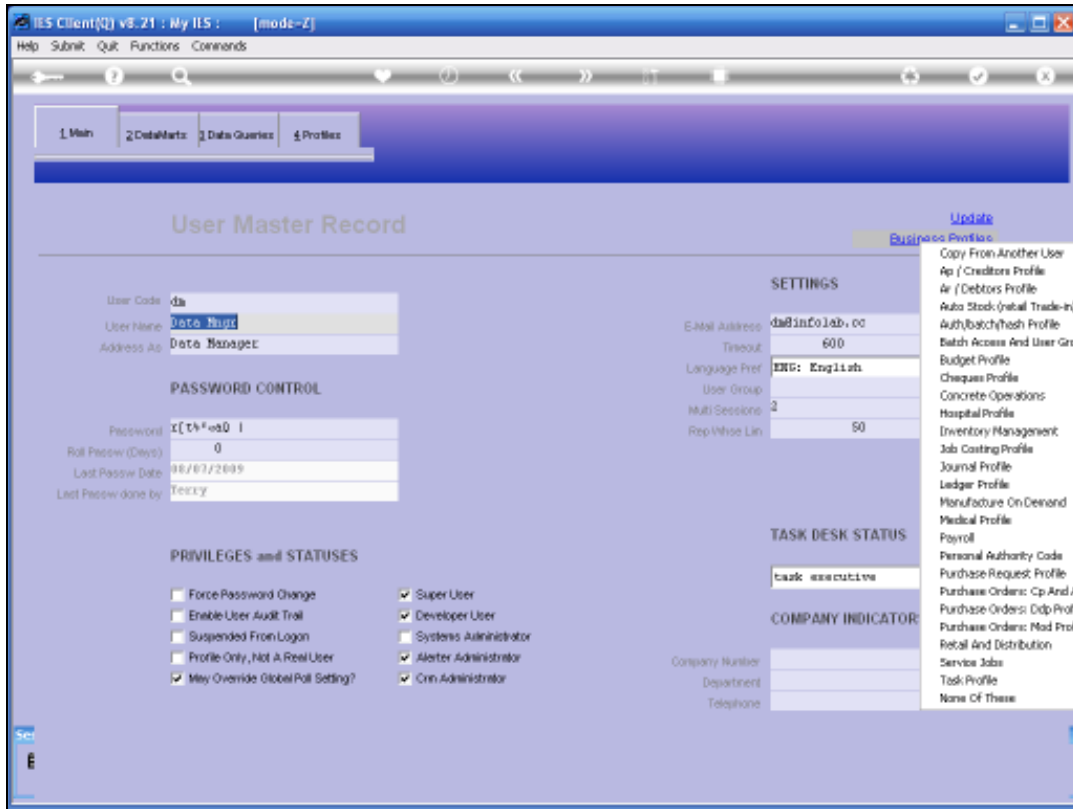


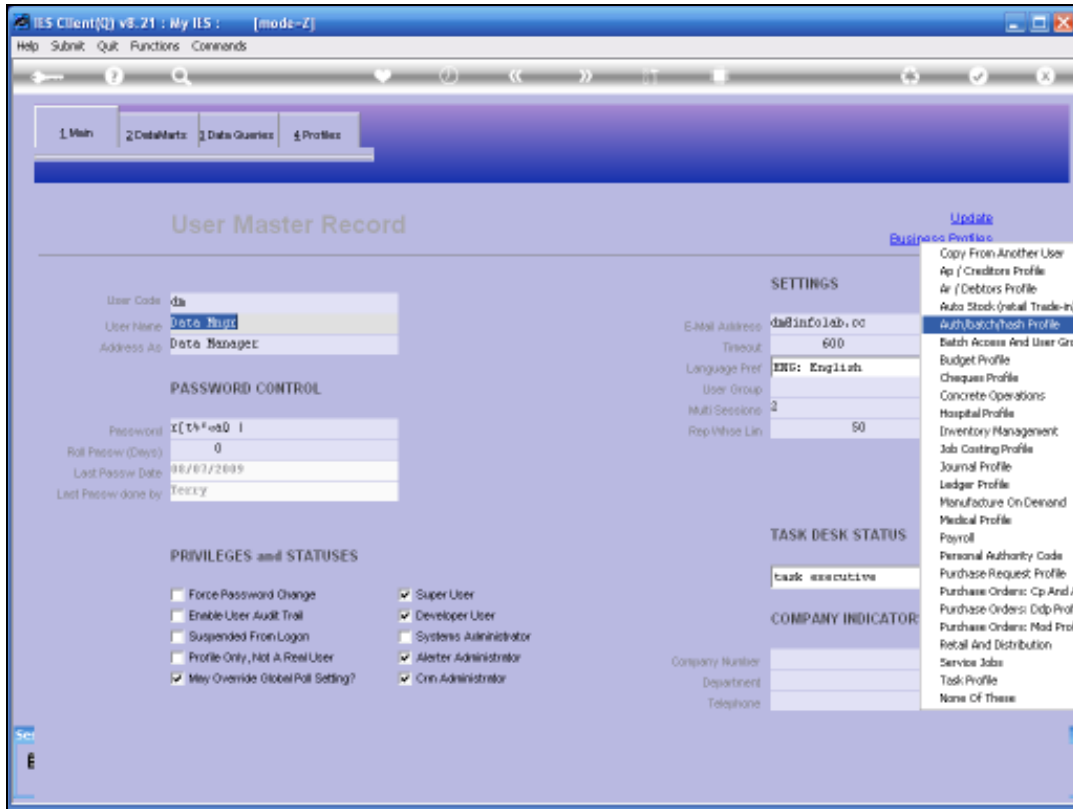
Slide 1

Slide notes: There are 2 elements in Hash Total control that determine whether a User MUST or CANNOT capture a Hash Total on Journal screens.

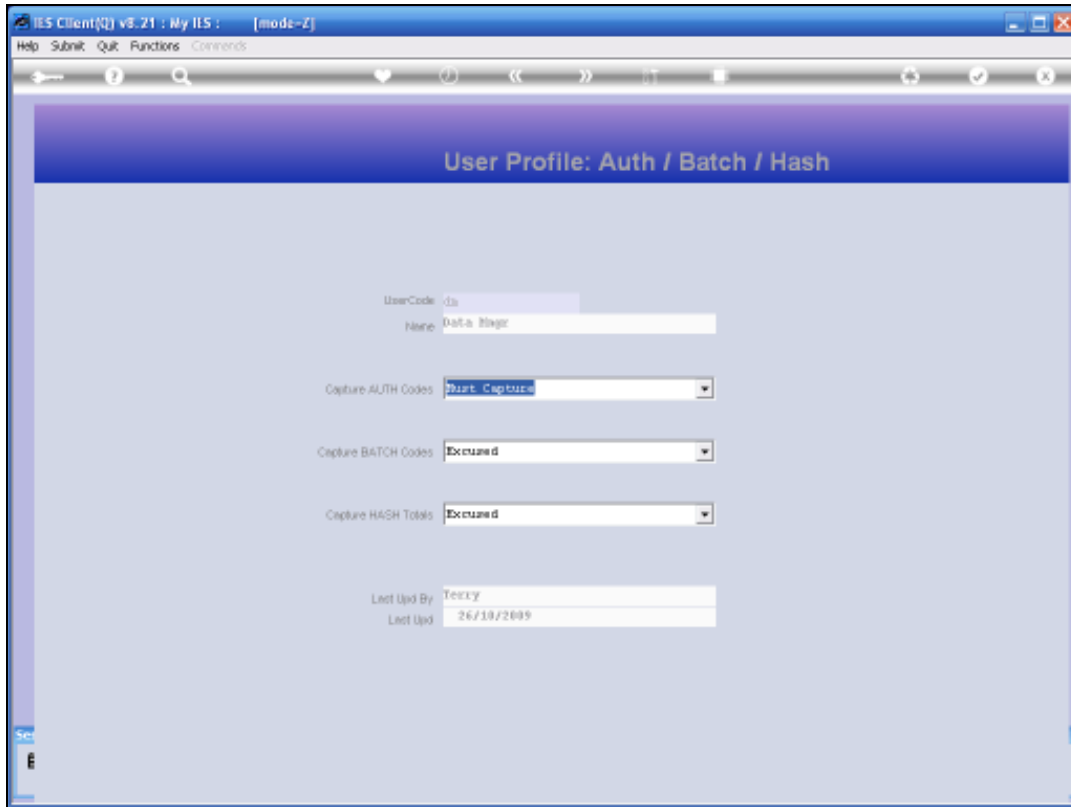


Slide 2

Slide notes: The User's Profile for Batches, Hashes and Authority Codes is a function of the Access Control set, and we access it from the User Master record.

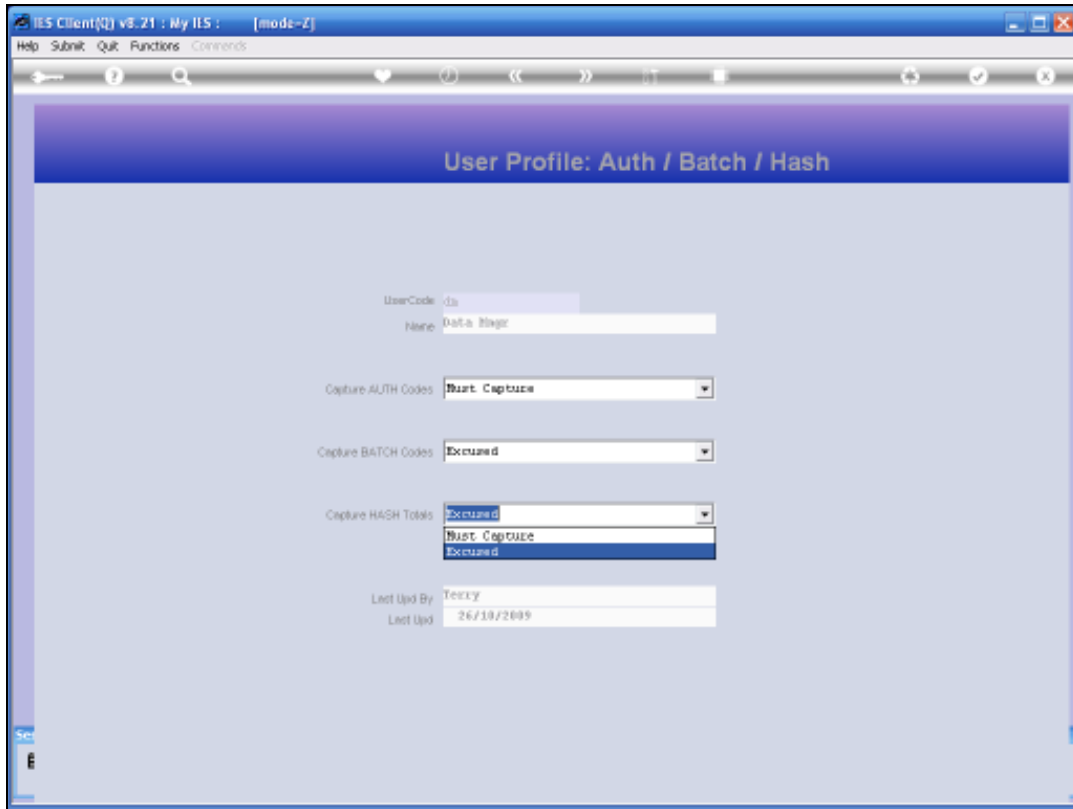


Slide 3
Slide notes:

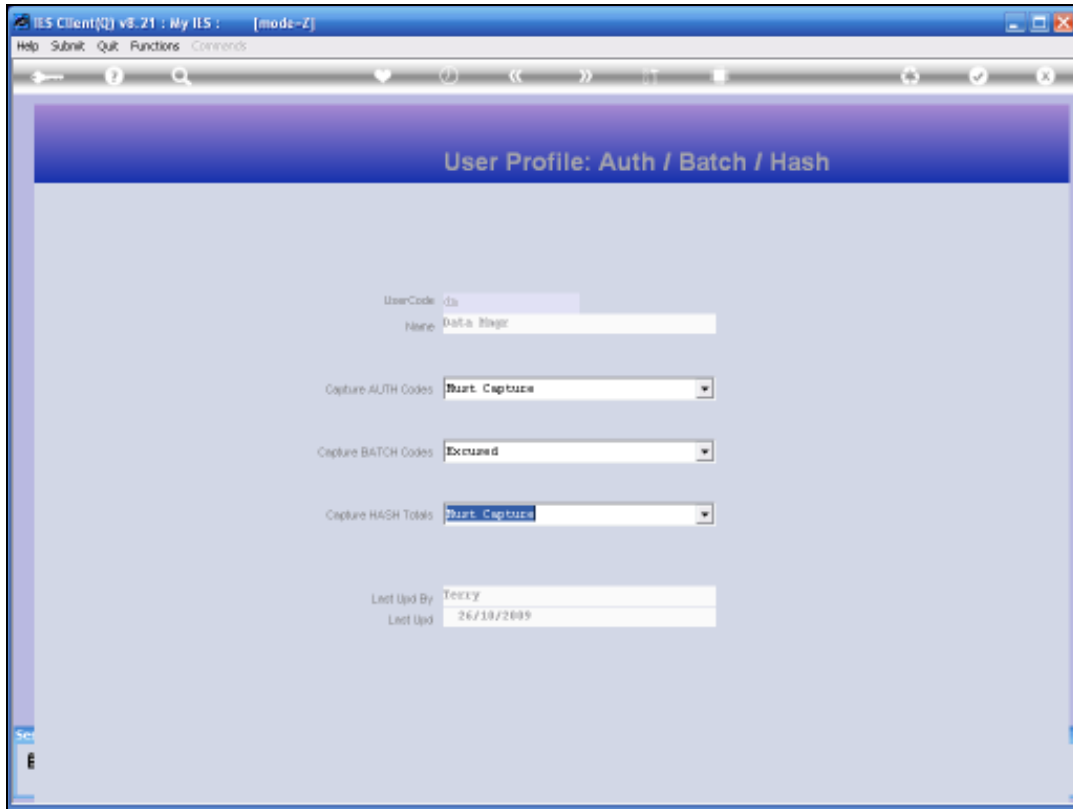


Slide 4

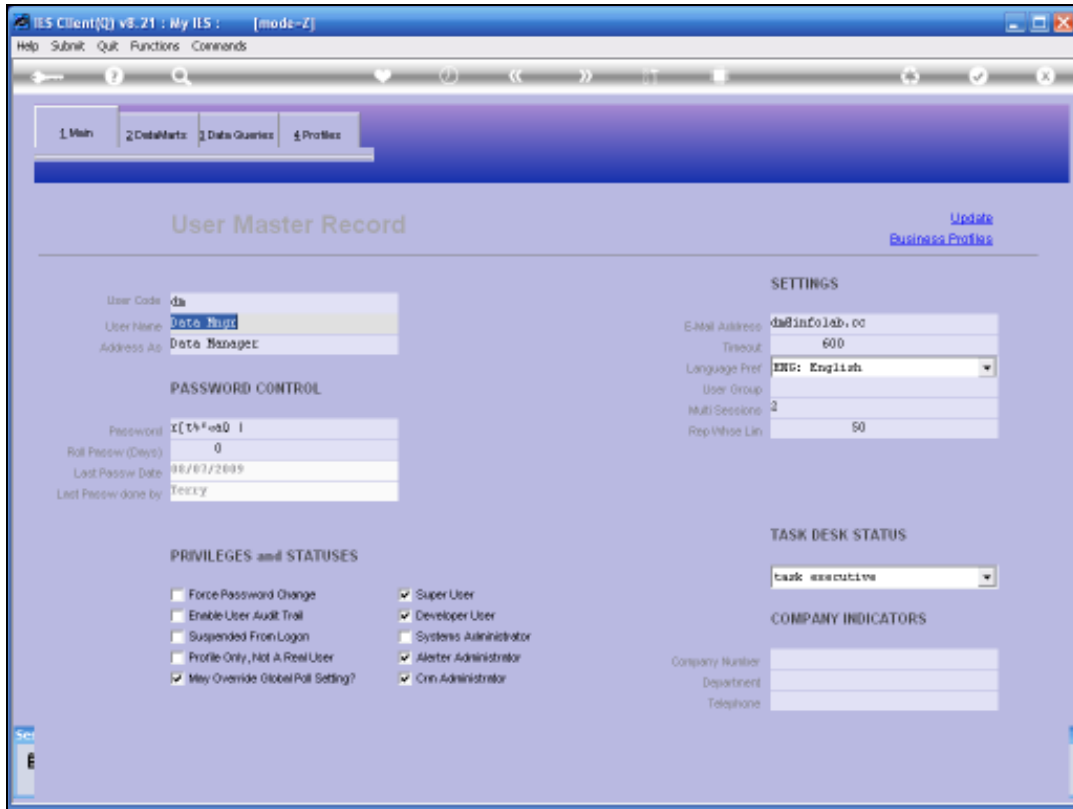
Slide notes: The Hash Total Control on the User Business Profile has 2 settings. If the User is EXCUSED from this control, then he or she cannot even access the Hash Total field on Journal screens. If the setting is MUST CAPTURE, then the User is forced to capture a Hash Total whenever it is present on a Journal screen.



Slide 5
Slide notes:



Slide 6
Slide notes:

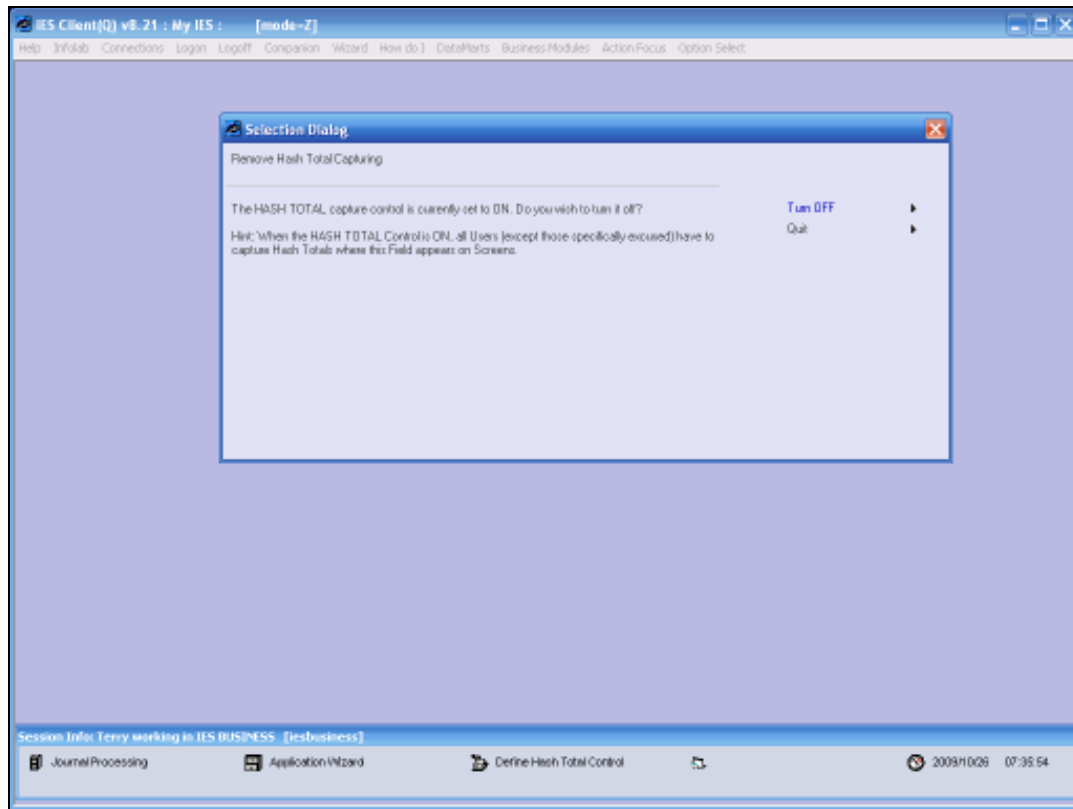


Slide 7
Slide notes:



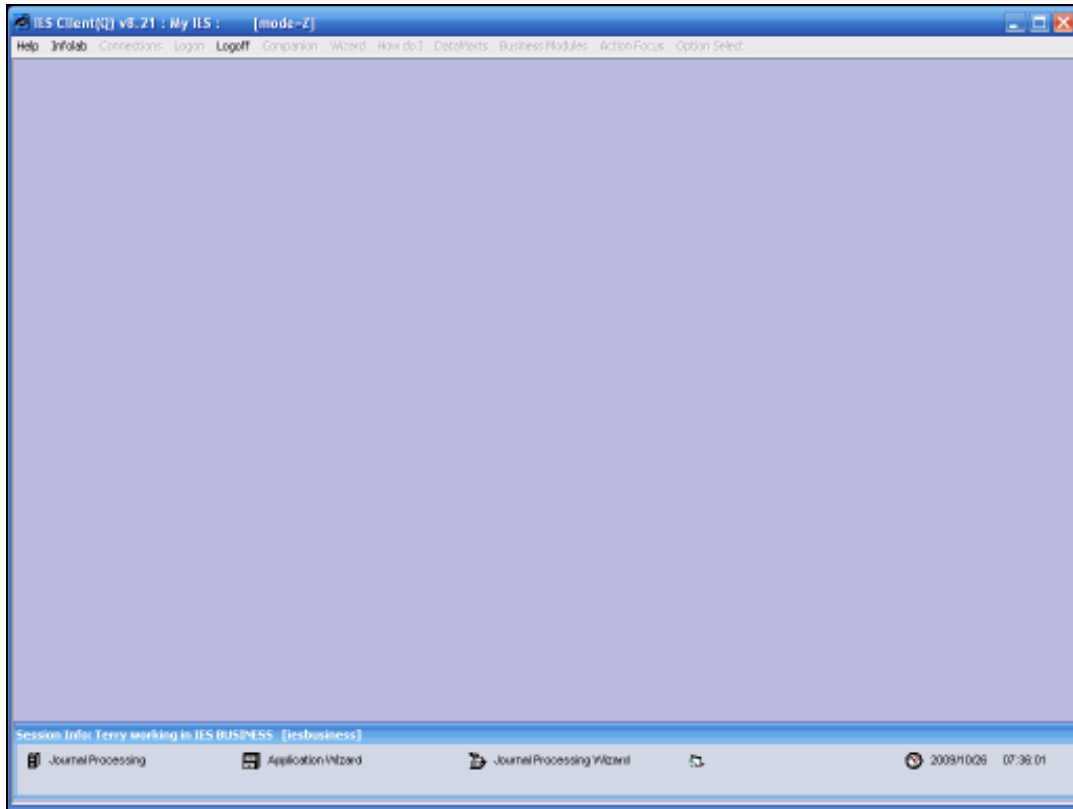
Slide 8

Slide notes: Next, we have also a global system control, to switch the entire Hash Total function ON or OFF in this Datamart.



Slide 9

Slide notes: The system will indicate the current state of the control, and allow us to toggle to the alternate state. When the Hash system is OFF, then all Users are excused from Hash Total capture, because the Hash function itself is then inhibited. When the Hash system is ON, then ONLY Users who have the Hash Total switched to " MUST CAPTURE" on their Business Profiles, have to capture Hash Totals, and other Users not.



Slide 10

Slide notes:



Slide 11
Slide notes: