

The screenshot displays the 'Various Accounting Parameters' window in the IES Client software. The window title is 'IES Client[1] vs. Z1 : My ILS : [mode-Z]'. The interface is organized into several sections:

- Business Set Up:** Includes dropdowns for 'Default Type' (101 Business (Generic)) and 'Print Setup' (DL: Standard).
- Country and Currency:** Fields for 'Country' (South Africa), 'Currency' (R), and 'Currency Label' (R).
- Withholding Tax:** A checked checkbox for 'Print Withholding Tax on AP Invoices'.
- Invoice Numbers:** Input fields for 'AP Invoice Number' and 'Sales Invoice Number', both set to 0000.
- Budgets:** A dropdown for 'Budget Comparison' set to 'ACTUALS + COMMITTEE'.
- Purchase Order Controls:** Includes a 'Allow Open Order Date' field (30) and checkboxes for 'Tax Flag Default', 'Out Orders', 'Default Ord #', and 'Use PO Final Sale'.
- Open / Close Controls:** Checkboxes for 'Apply Ord: Jobs', 'Apply Ord: Ledger', 'Apply Ord: Debitors', and 'Apply Ord: Creditors'.
- Consolidator:** A warning message: 'CAUTION ONLY IF FEED-A CONSOLIDATOR!'.
- Fail-safe Operations:** A checked checkbox for 'Keep Open Trans'.
- Requested Journals:** An input field set to 15.
- Journal Import Privilege:** An input field set to 30.
- Auth Code Controls:** A checked checkbox for 'Auth Code next = User Code' and several dropdown menus for 'Auth Codes with Ledger Access', 'Auth Codes Ledger Access with Jobs', 'Auth Codes Journal Links', 'Auth Codes Journal Links with Job', 'Auth Codes Issue Links', and 'Auth Codes Issue Links with Jobs', all set to 'Do Not Apply'.
- Stl Tax: VAT, GST, CGT, PPN:** Fields for 'Tax Reporting Rate' (00-00-00-2) and 'Net Tax Rate' (1.00).

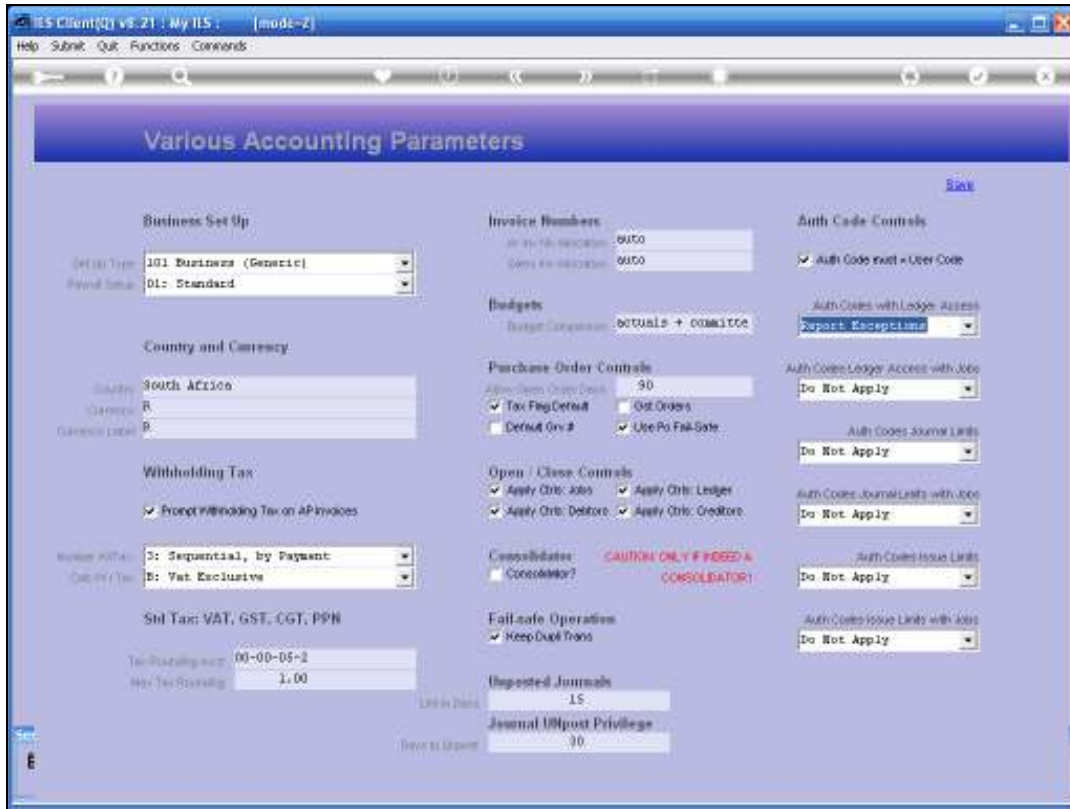
A 'Save' button is located in the top right corner of the window.

Slide 1

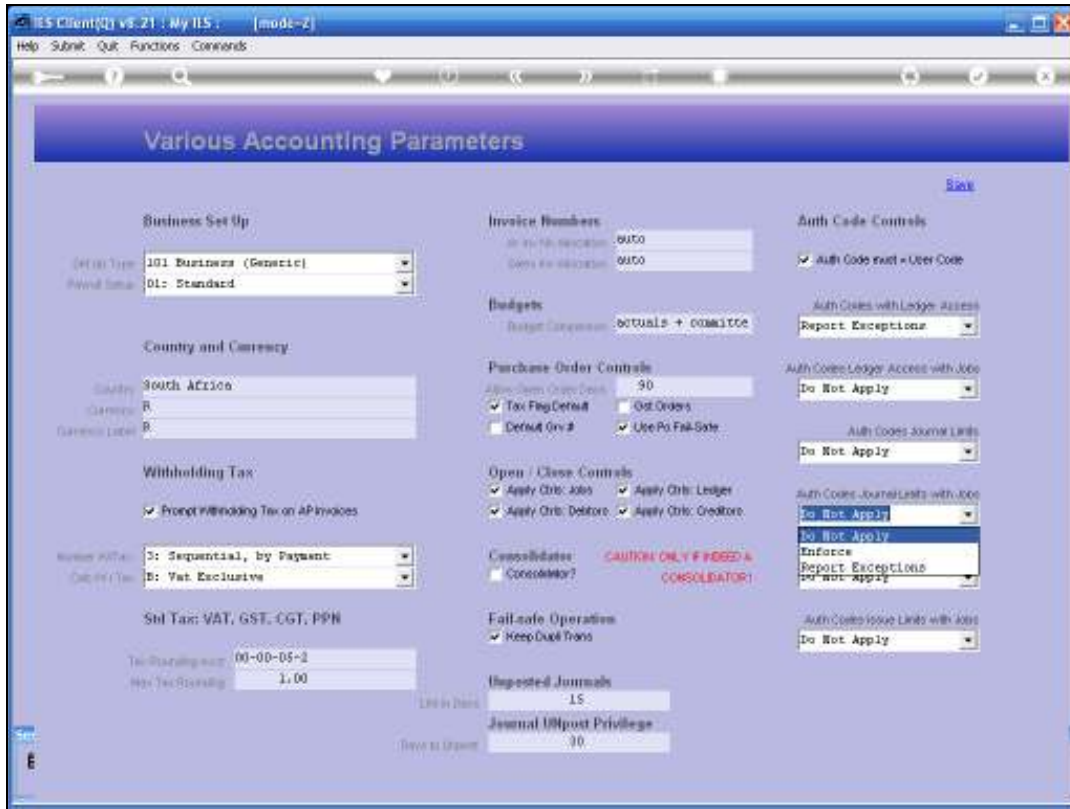
Slide notes: We will now look at the Breach Report, and this Report cannot be expected to reveal anything unless we have some of our Authority Code settings on the option to 'Report Exceptions'. That is what the Breach Report is about. It reports exceptions in the processing of Authority Codes.

Slide 2

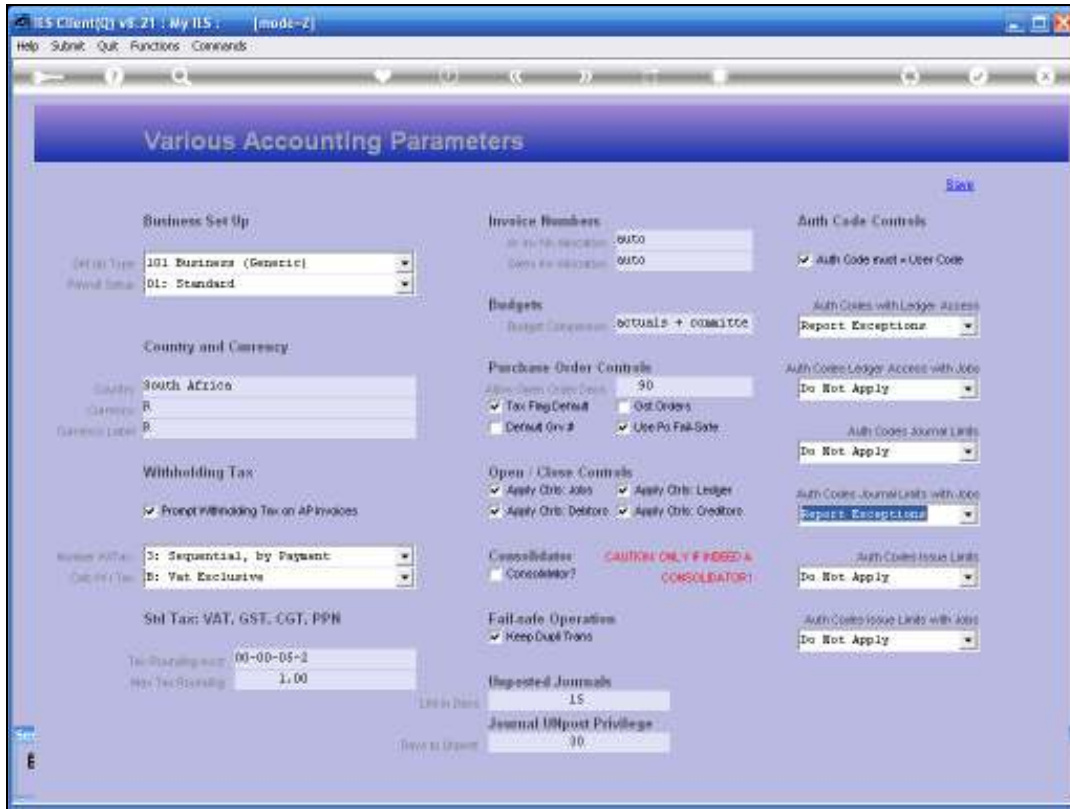
Slide notes: So here we are just showing the main settings at the Accounting Controls, and that 1 or more of these options for Authority Codes will be on the choice 'Report Exceptions', otherwise there will not be anything to report on, in the Breach Report. If we apply Authority Codes as 'enforced', for example, then the Journals where Business Rules are transgressed will be refused by the system and will not post, but when we use the option to 'Report the Exceptions' then of course the Journals will be accepted for posting and the necessary exceptions will be listed on the Breach Report.



Slide 3
Slide notes:



Slide 4
Slide notes:



Slide 5
Slide notes:



Slide 6

Slide notes: Now we will perform an example of the Breach Report.



Slide 7
Slide notes:



Slide 8
Slide notes:

IES Client(0) vs. Z1 : My IES : [mode=Z]

Help Submit Quit Functions Comments

IES REPORTS AND QUERIES: - User Instructions

NAME: AUTHORITY CODE BREACHES

1: - CHOOSE VERSION [Versions](#)
Report Version:

2: - CHOOSE SETTINGS
Format:
Output:
File Type:
Template:
Report header:

3: - CHOOSE DATA SELECTOR [Custom Selector](#)
Fixed choice:

4: - TO e-MAIL THE RESULTS Priority:
 Dispatch By E-Mail Mail Drive:

5: - ADAPT DATA SELECTION @ groups are present
How to adapt MY CHOICE

Selection Tip	By Choice
1. Period Number = ?	
2. Authority Code = ?	
3. Capture Date >=	26/09/2009
4. Capture Date <=	26/10/2009

6: - Record Select
 OPEN Records only
 CLOSED Records Only
 EITHER

7: - CHOOSE NEXT [Next](#)

Slide 9

Slide notes: We can select the date range for Exceptions that should be included in the Report, and also which Authority Codes.

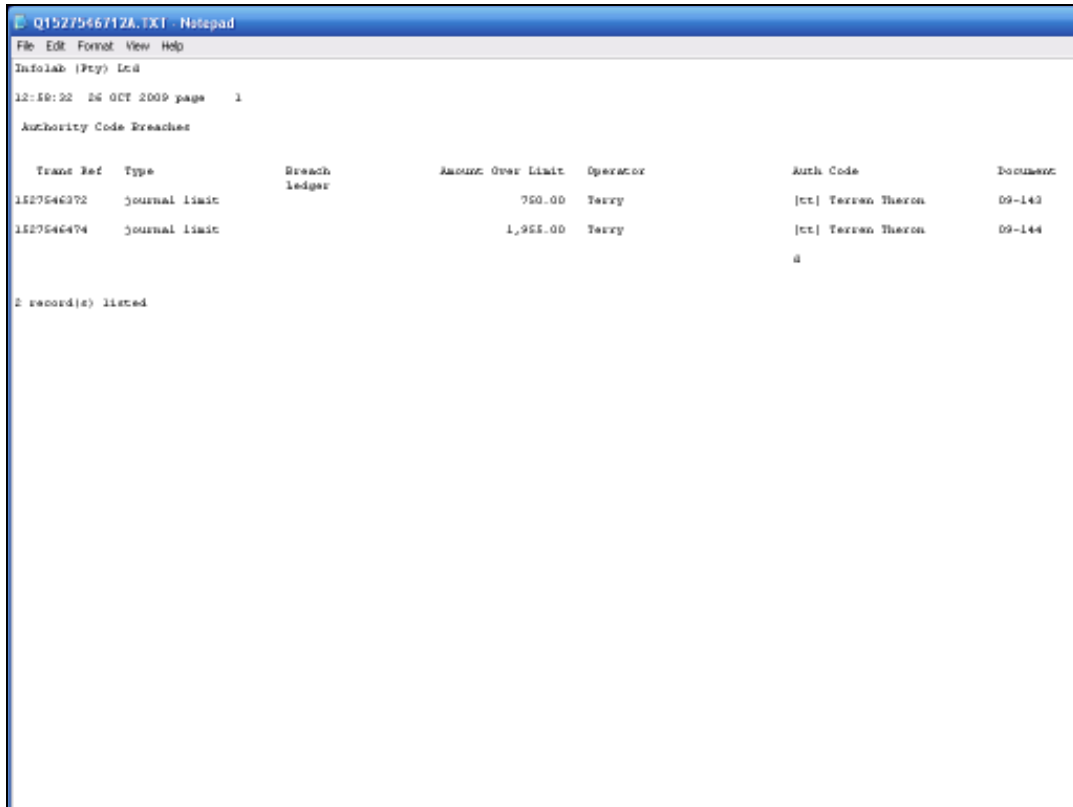
```
Q152754671ZA.TXT - Notepad
File Edit Format View Help
Infolab (Fry) Ltd
12:50:22 26 OCT 2009 page 1
Authority Code Breaches

Trans Ref  Type      Breach      Amount Over Limit  Operator      Auth Code      Document
          journal limit ledger
1527546372  journal limit          750.00  Terry          |tt| Terren Theron  09-143
1527546474  journal limit      1,955.00  Terry          |tt| Terren Theron  09-144
                                     a

2 record(s) listed
```

Slide 10

Slide notes: And in this example, we see 2 exceptions being reported. In this case, the Authority Code "tt" has a Journal limit of 1,000, and here we have 2 Journals performed for Amounts that exceed 1,000.



Q1527546712A.TXT - Notepad

File Edit Format View Help

InfoLab (Pty) Ltd

12:50:22 26 OCT 2009 page 1

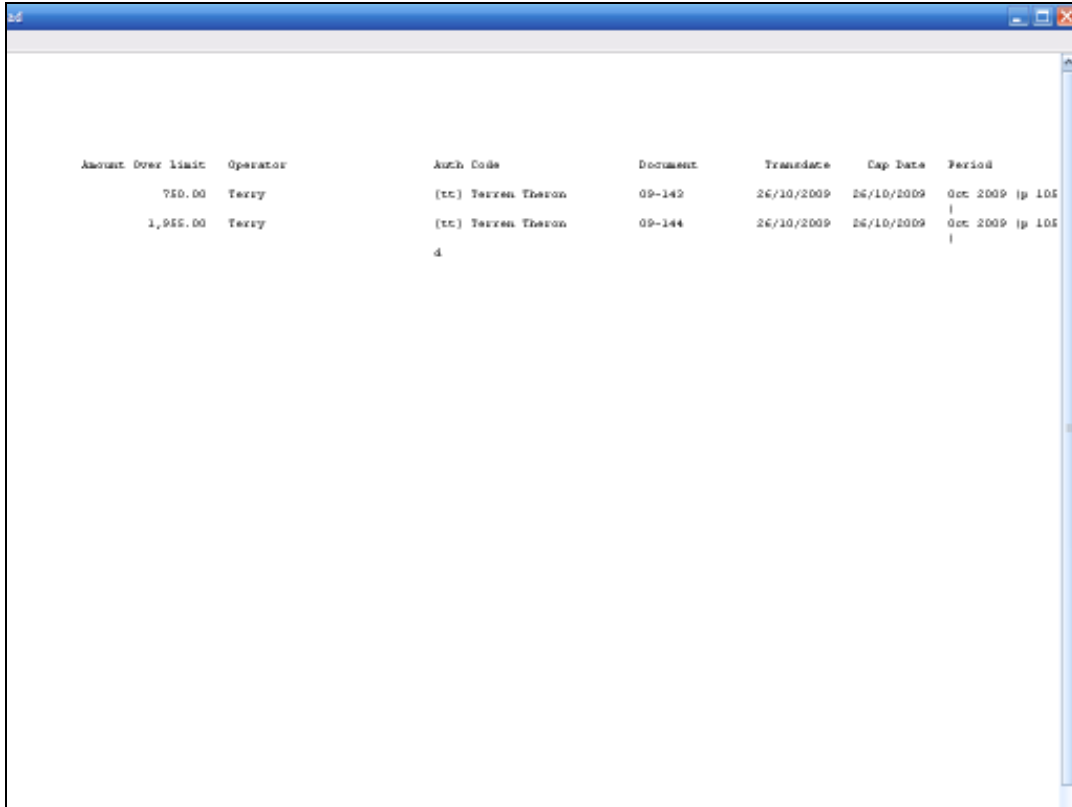
Authority Code Breaches

Trans Ref	Type	Breach ledger	Amount Over Limit	Operator	Auth Code	Document
1527546372	Journal limit		750.00	Terry	[ct] Terren Theron	09-143
1527546474	Journal limit		1,955.00	Terry	[ct] Terren Theron	09-144

2 record(s) listed

Slide 11

Slide notes:



Amount Over Limit	Operator	Auth Code	Document	Transdate	Cap Date	Period
750.00	Texsy	[tc] Terren Theron	09-142	26/10/2009	26/10/2009	Oct 2009 p 105
1,955.00	Texsy	[tc] Terren Theron	09-144	26/10/2009	26/10/2009	Oct 2009 p 105

Slide 12

Slide notes: On the right hand side of the Report we have more information about the Transactions that have raised exceptions. The Breach Report is therefore a useful Management Report to reveal exceptions, i.e. where Authority Code Business Rules have been over-stepped, even though the Journals have been allowed for posting.