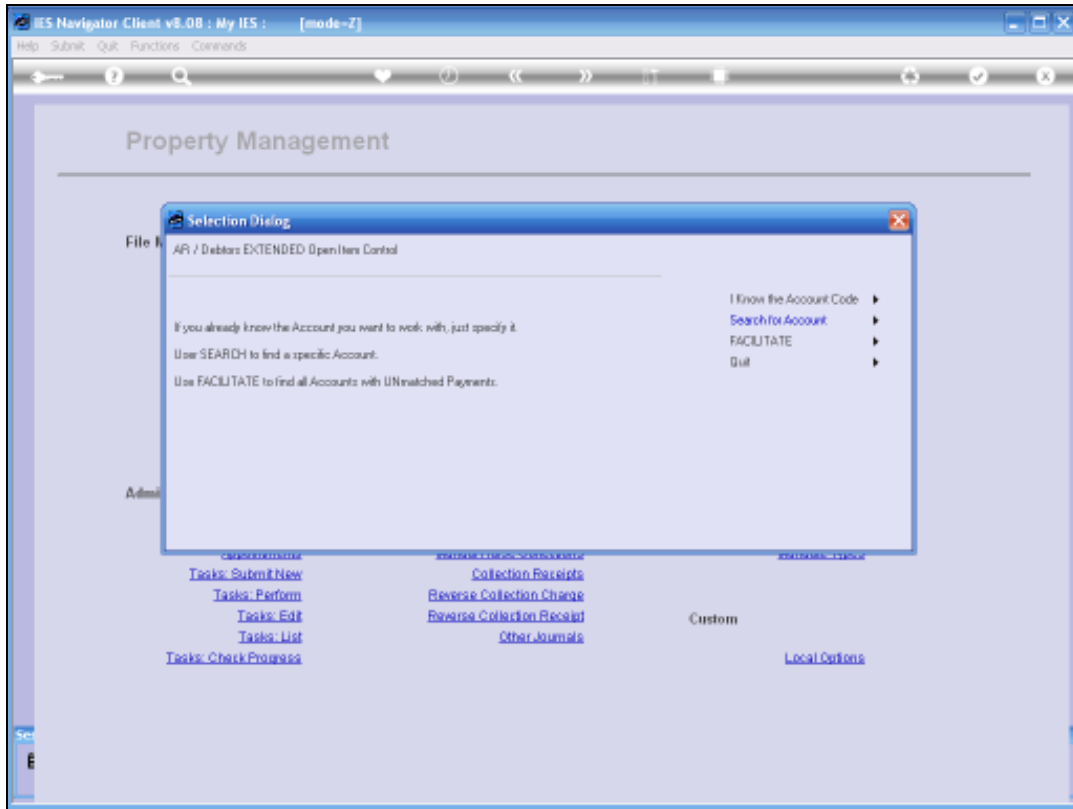


Slide 1

We are discussing Open Item Matching in the Property Management System.



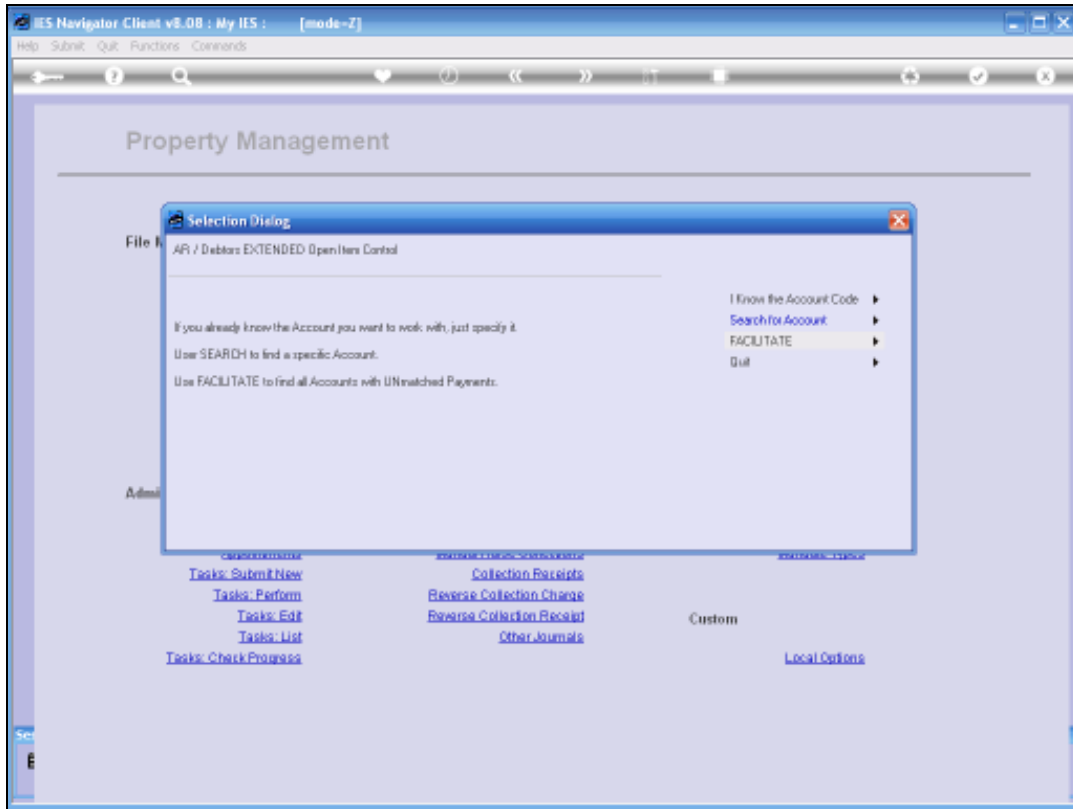
Slide 2

Matching of course comes up when we Process Receipts.

But it is possible that the User Processing Receipts is not set for Matching and in that case, or for other reasons where we have additional Matching to do, we may want to use the Matching Option.

Now when we use this Option in Property Management, it works exactly the same as in other parts of the System where we do Matching on Receivable Accounts.

The purpose of having this Option here specifically, is that when we use the Facilitate Option here, then the System will automatically only select those Accounts that are Property Management related and it will exclude the other Accounts.



Slide 3

Other than that there is no need to discuss the Matching further here because it works exactly the same as Matching for Receivables work when we use it anywhere else in the System.