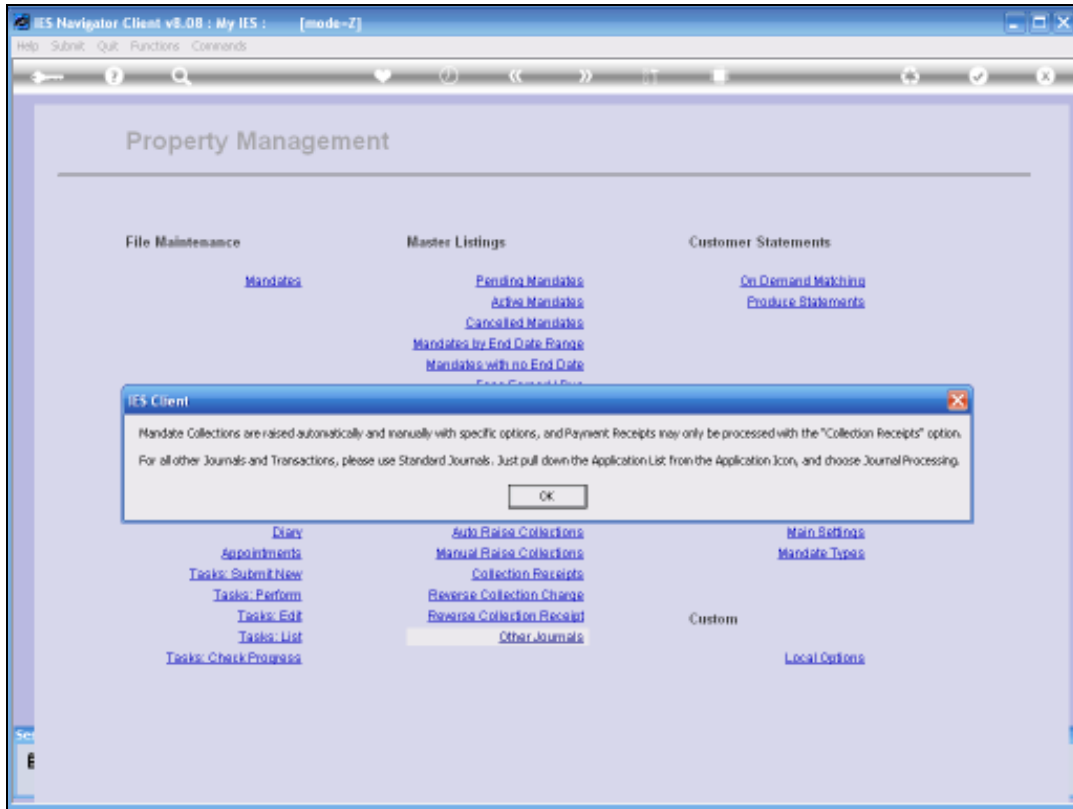


Slide 1

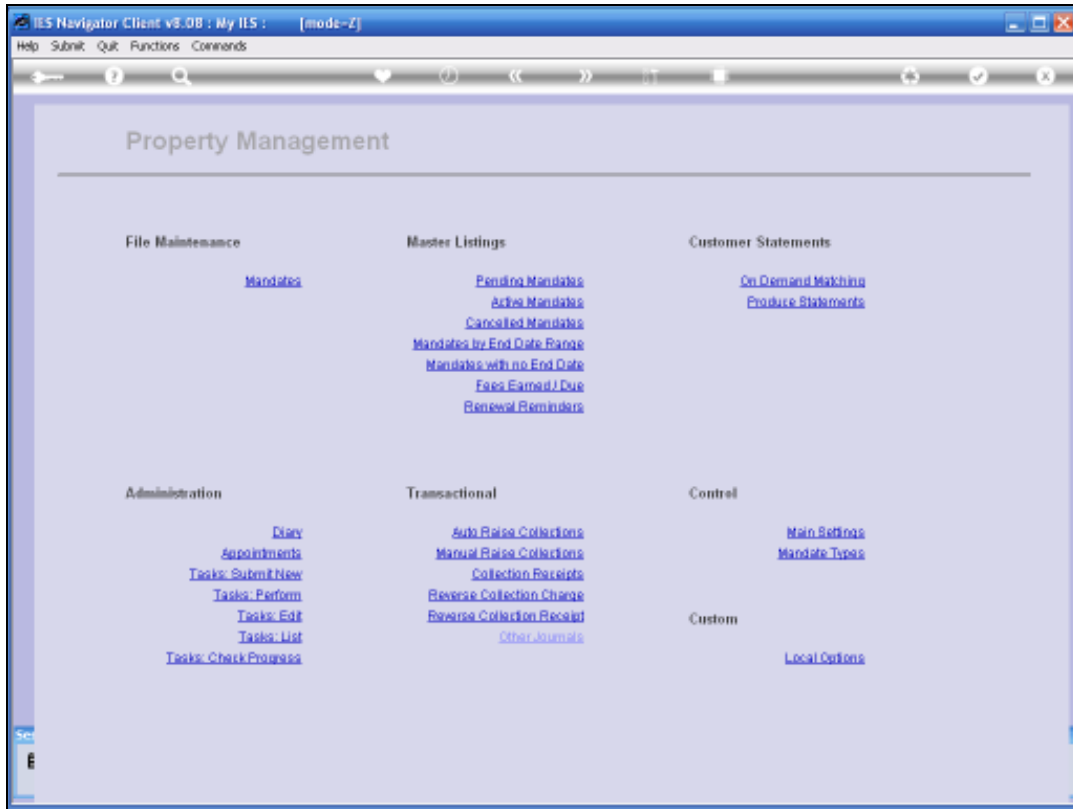
How would we process any other Journals other than a Collection or a Receipt, on a Mandate Account?



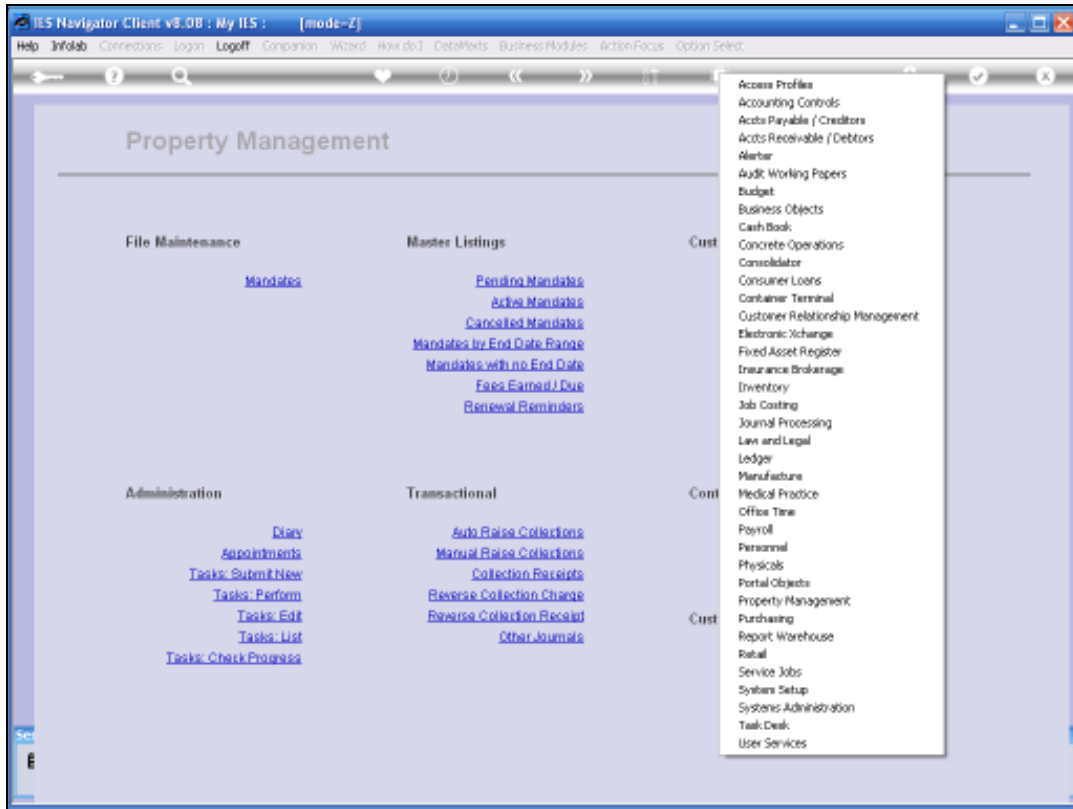
Slide 2

We should simply use the Standard Journal Options, depending on whether we want to post to the Receivable Account or one of the Payable Accounts, on the Mandate.

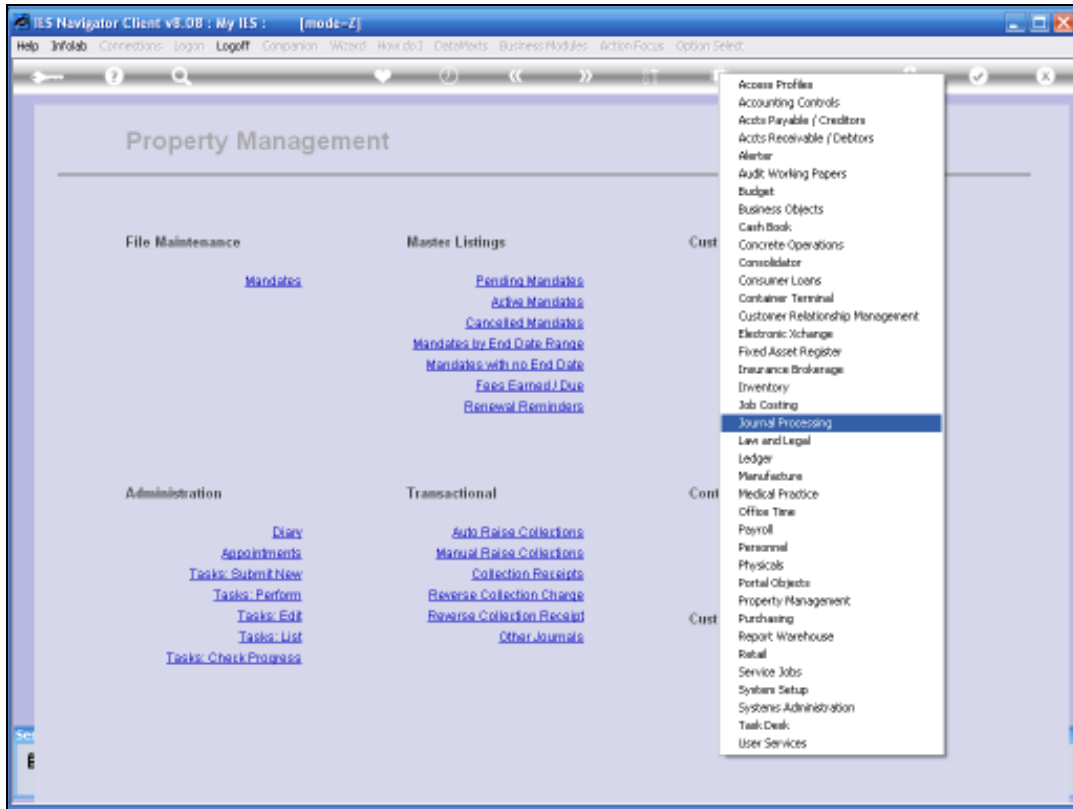
They are Standard Receivable and Payable Accounts, and we can process Standard Journals on these Accounts, where necessary.



Slide 3



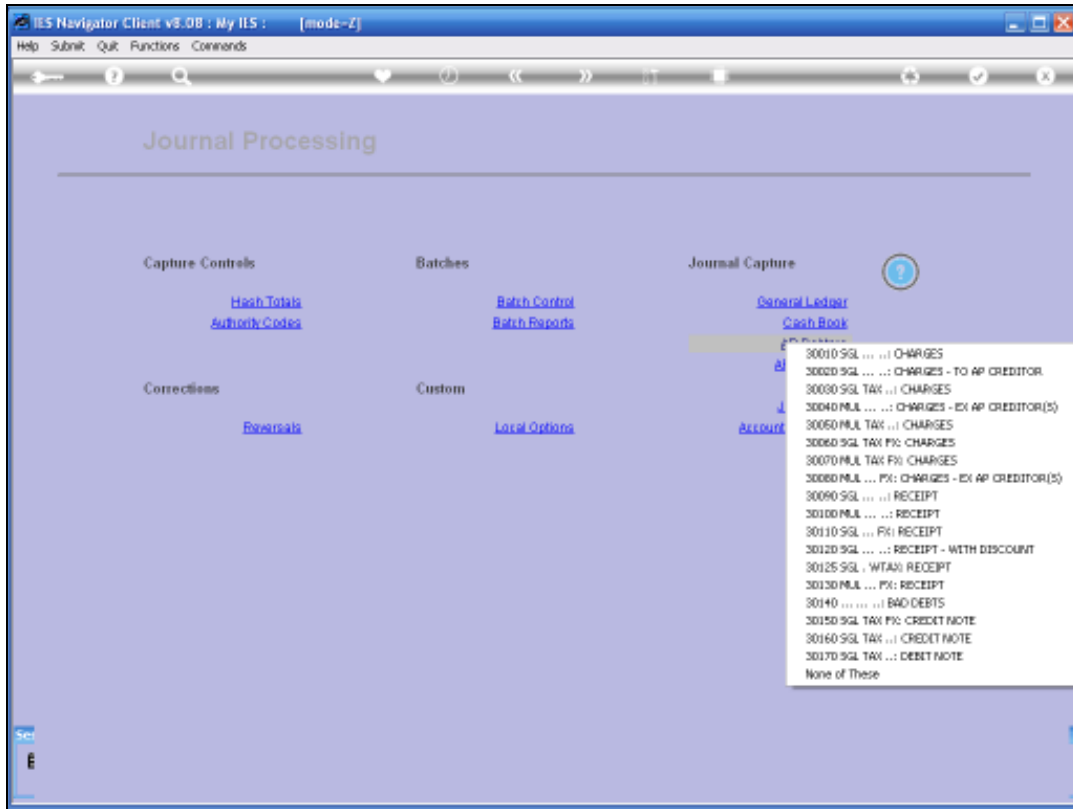
Slide 4



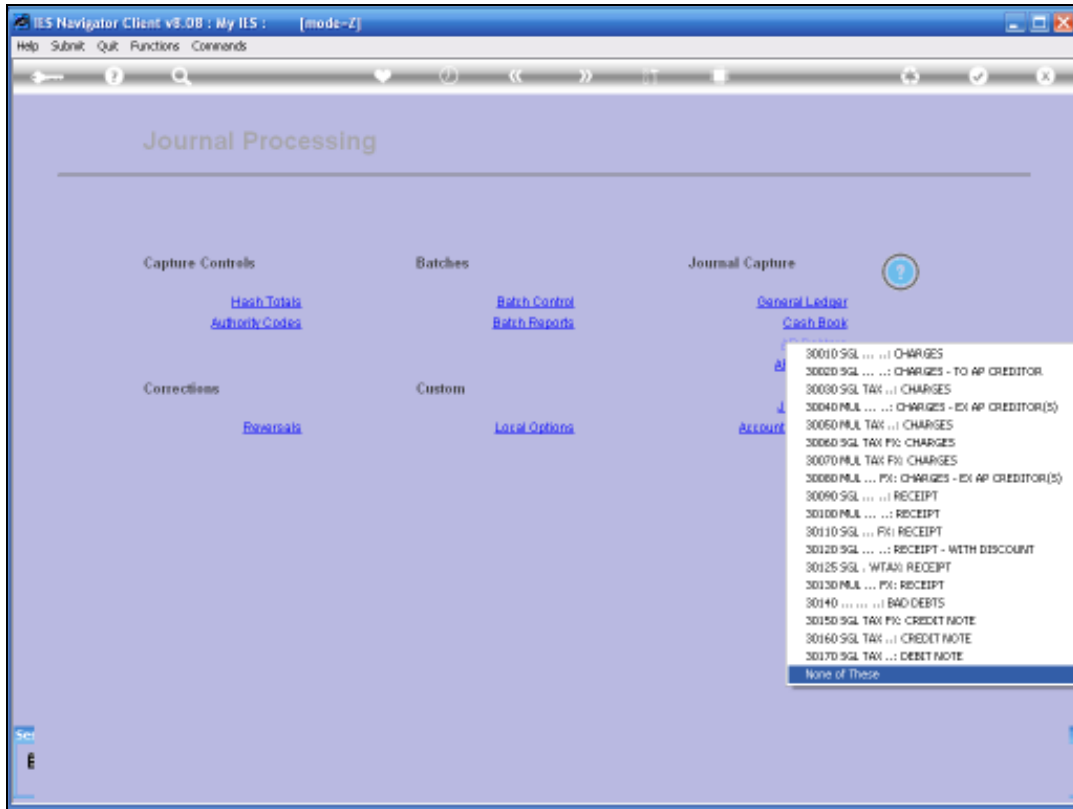
Slide 5



Slide 6

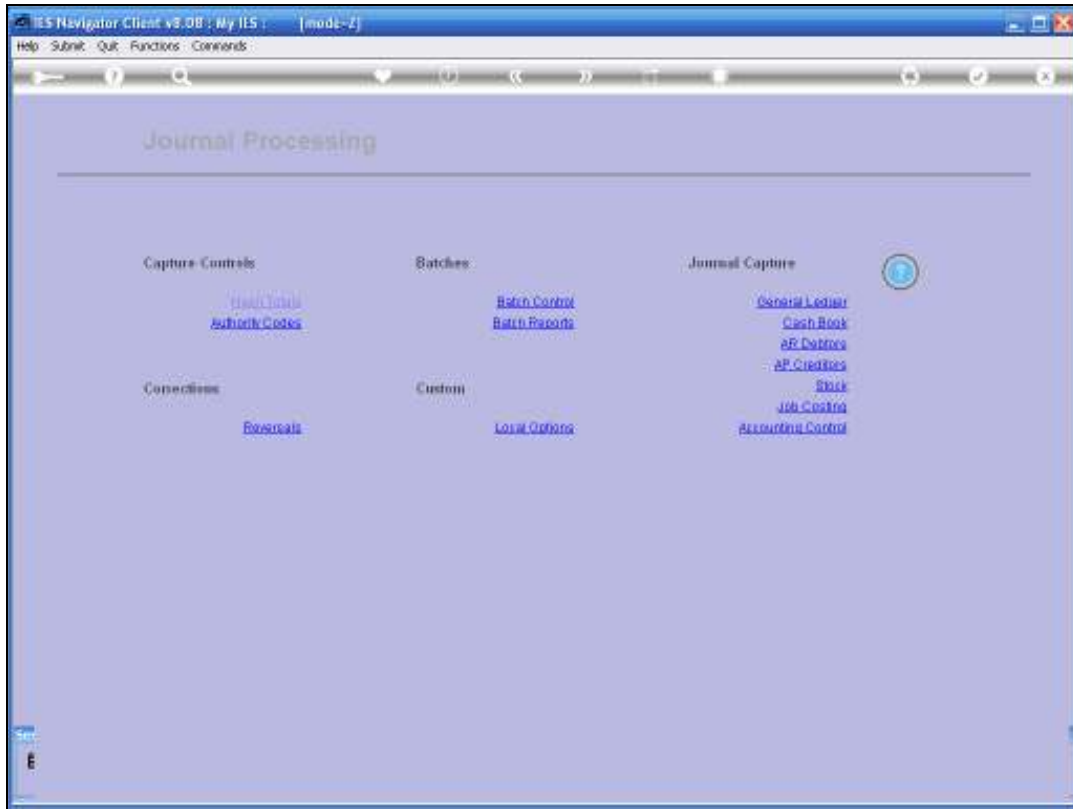


Slide 7

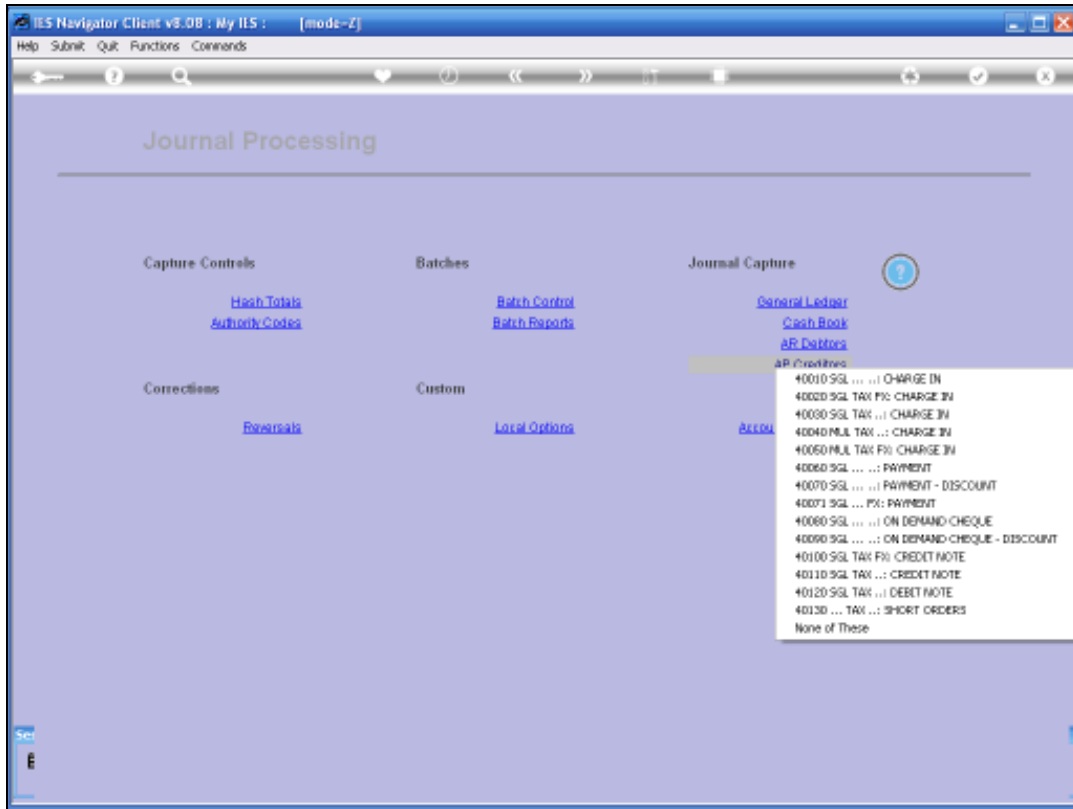


Slide 8

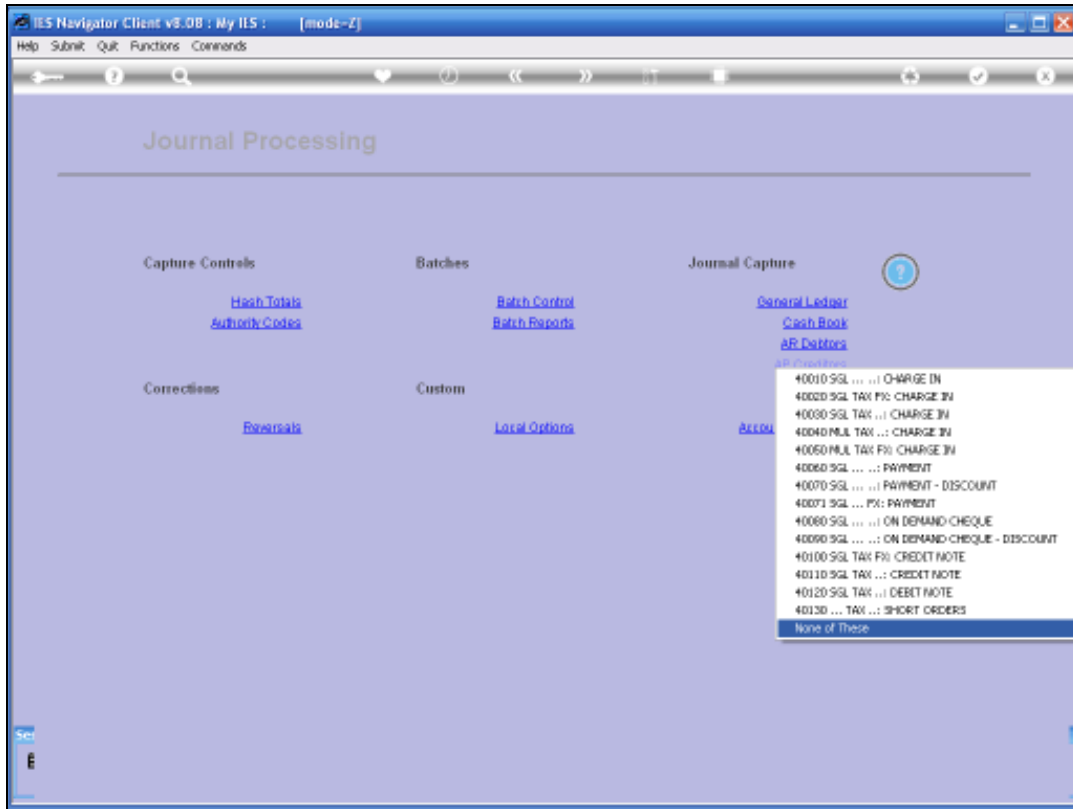




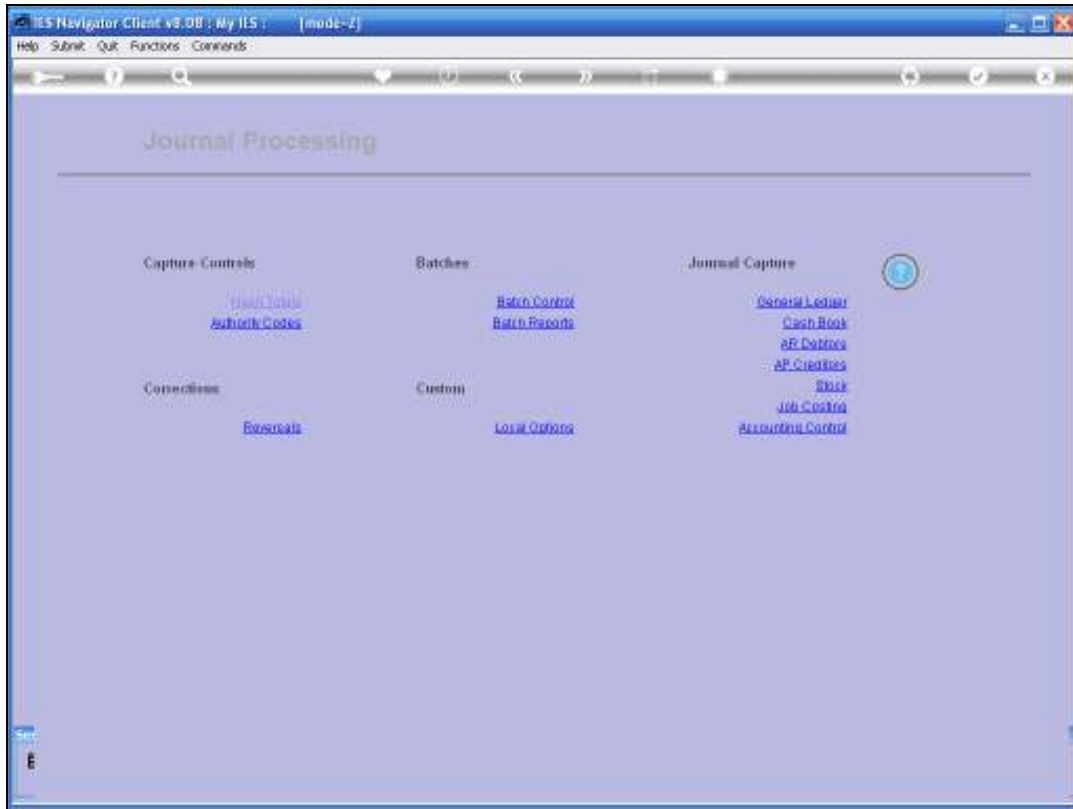
Slide 9



Slide 10



Slide 11



Slide 12