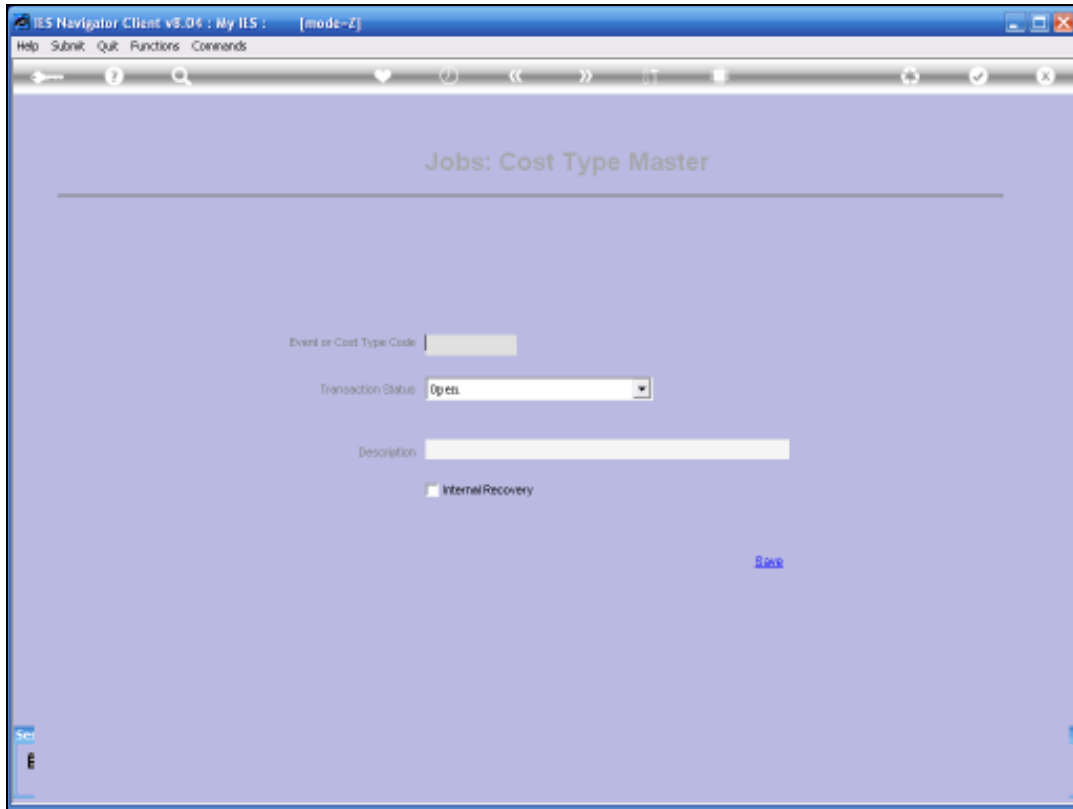




Slide 1

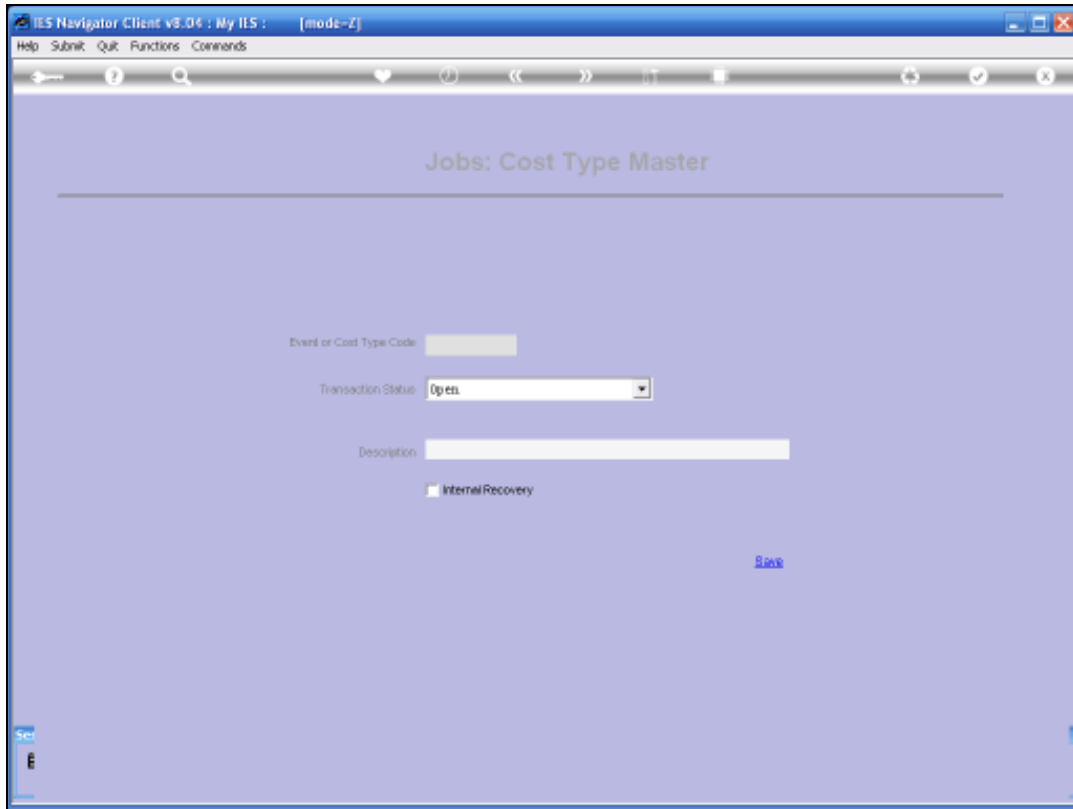
Slide notes:

In this session we are going to look at Cost Types.



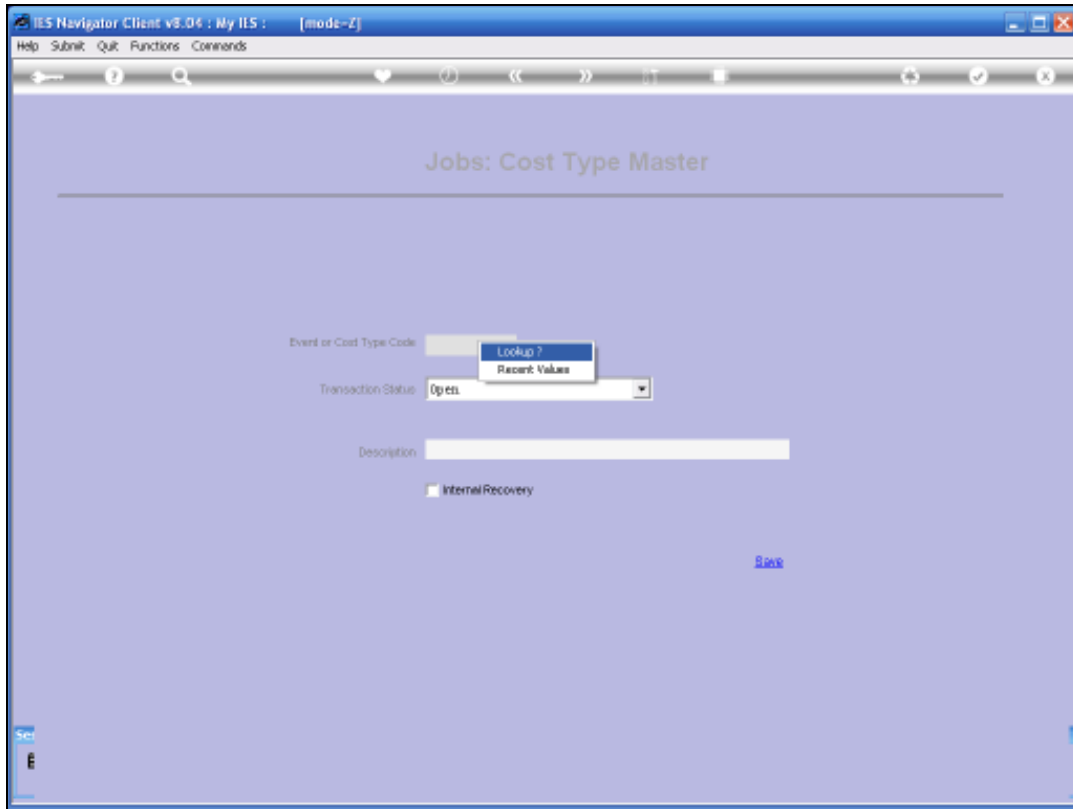
Slide 2

Slide notes:



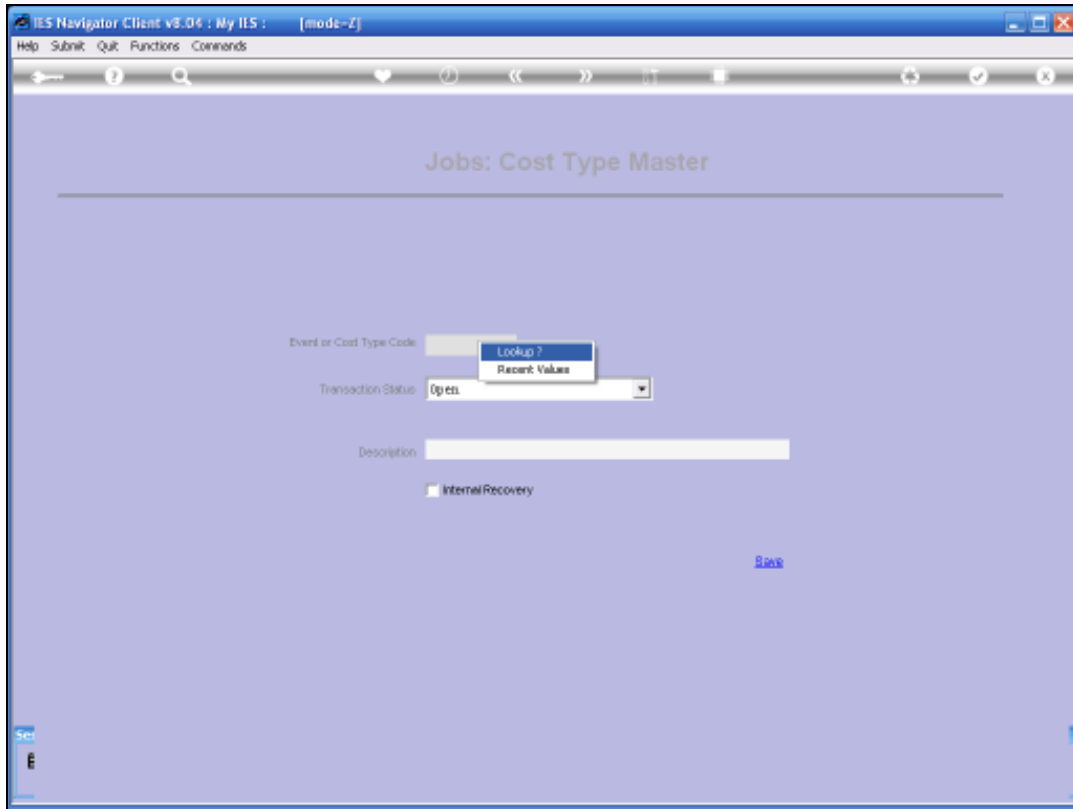
Slide 3

Slide notes:

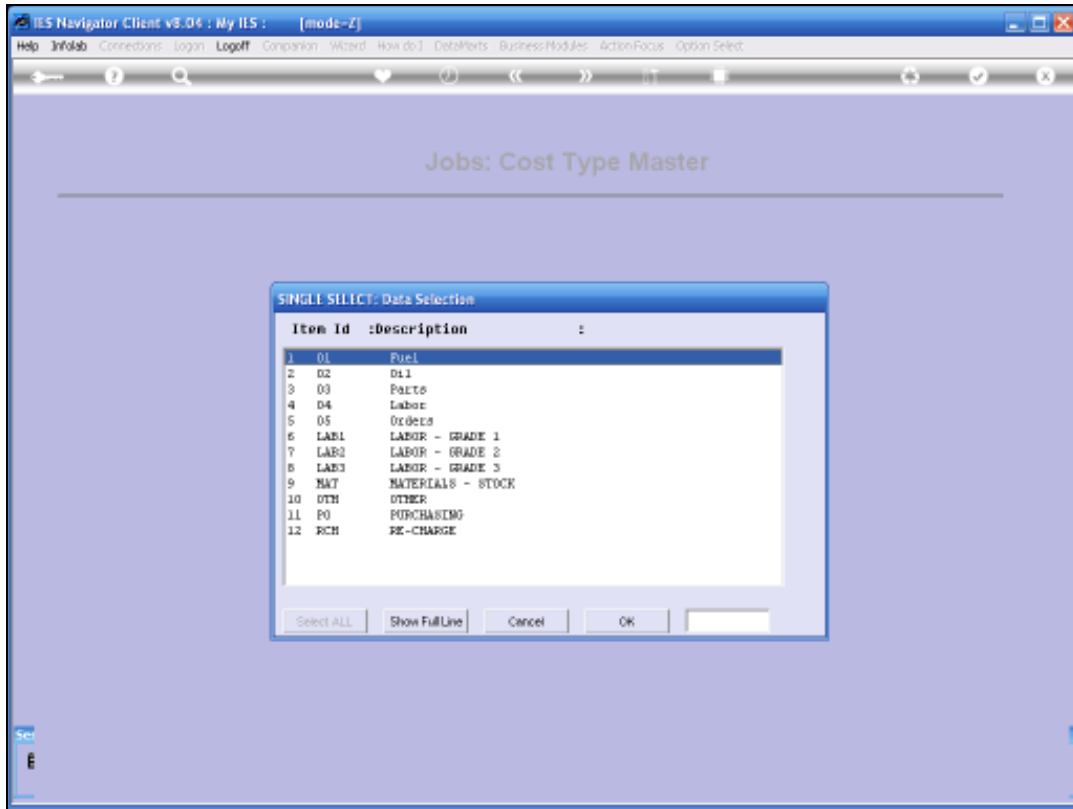


Slide 4

Slide notes:

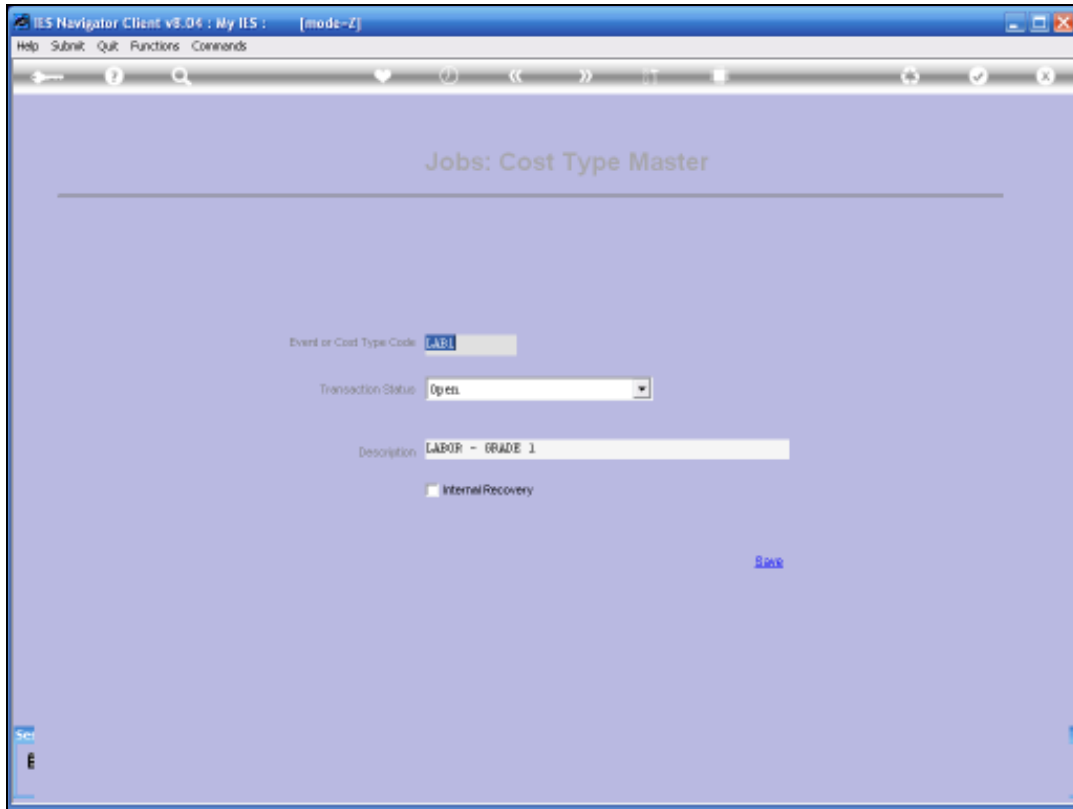


Slide 5
Slide notes:



Slide 6
Slide notes:

We can have any number of Cost Types and the Cost Types that we have will be determined by the different Items that we wish to group together as charges or other actions performed on Jobs.



Slide 7

Slide notes:

The screenshot shows a web browser window titled "IES Navigator Client v8.04 : My IIS : [mode-Z]". The browser address bar is empty. The page content is titled "Jobs: Cost Type Master". Below the title, there is a form with the following fields:

- Event or Cost Type Code: LABL
- Transaction Status: Open (dropdown menu with options: Open, Closed)
- Description: LABOR - GRADE 1
- Internal Recovery:

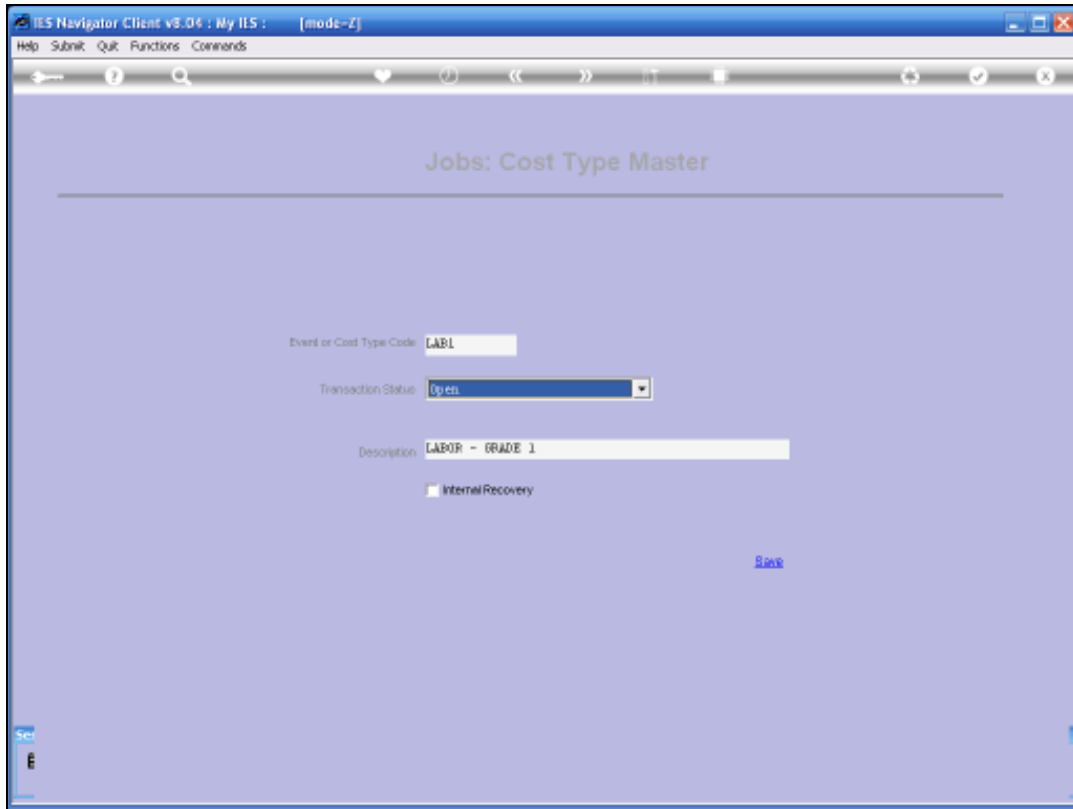
A "Save" button is located at the bottom right of the form area.

Slide 8

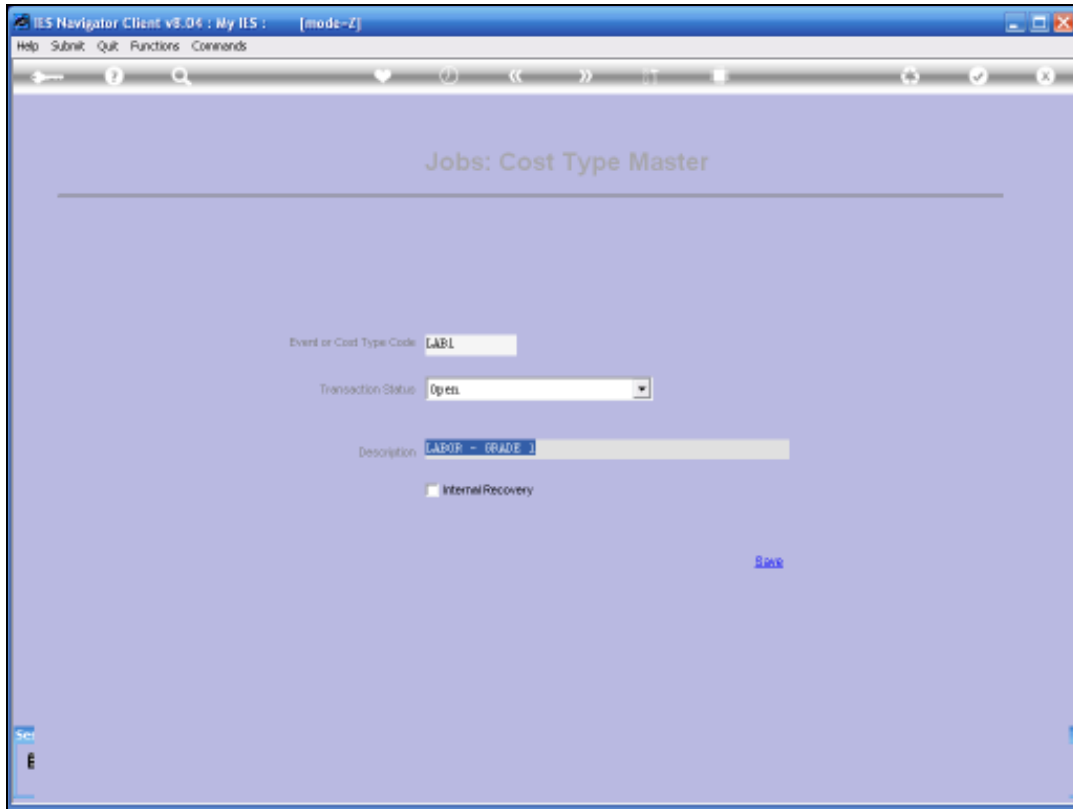
Slide notes:

A Cost Type is easy to define. 1st of all we give it a short Key to note the event of Cost Type Code. Then of course we will have a Transaction Status, which will usually be Open, and then we give it a Name or a Description.

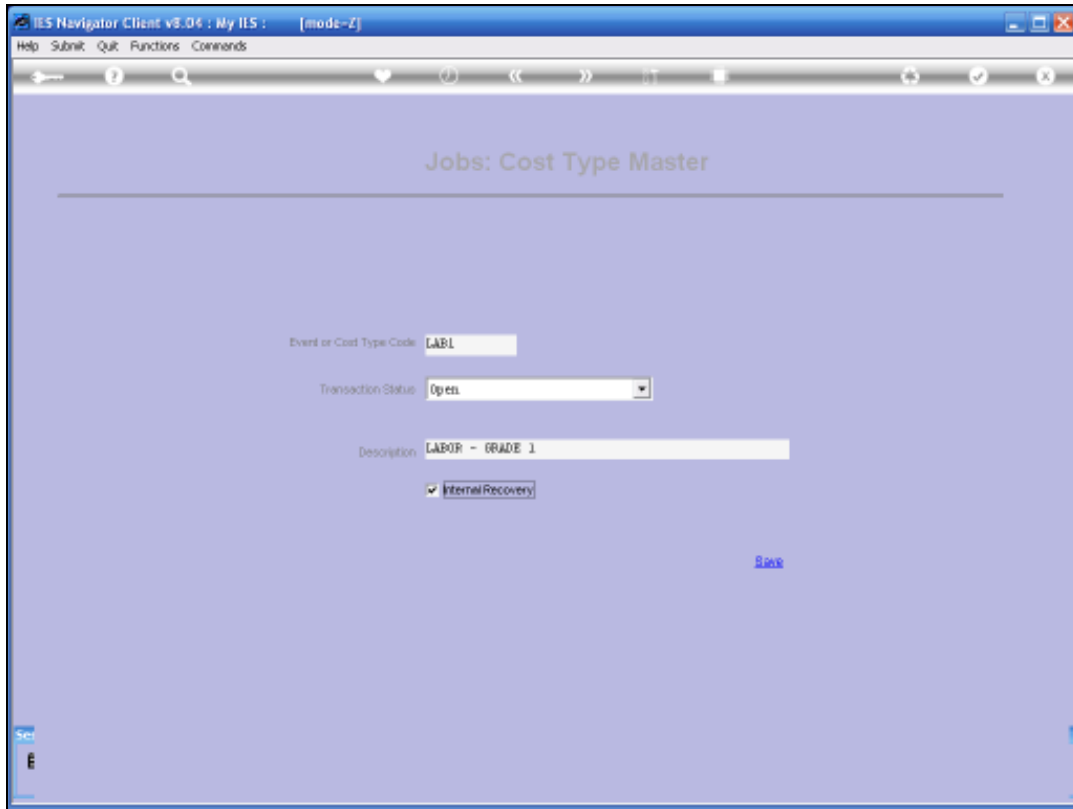
Now note the Internal Recovery Field here, which is not relevant for Service Jobs. It is used with Jobs Costing in other parts. But for Service Jobs it is not relevant whether that field is checked or not.



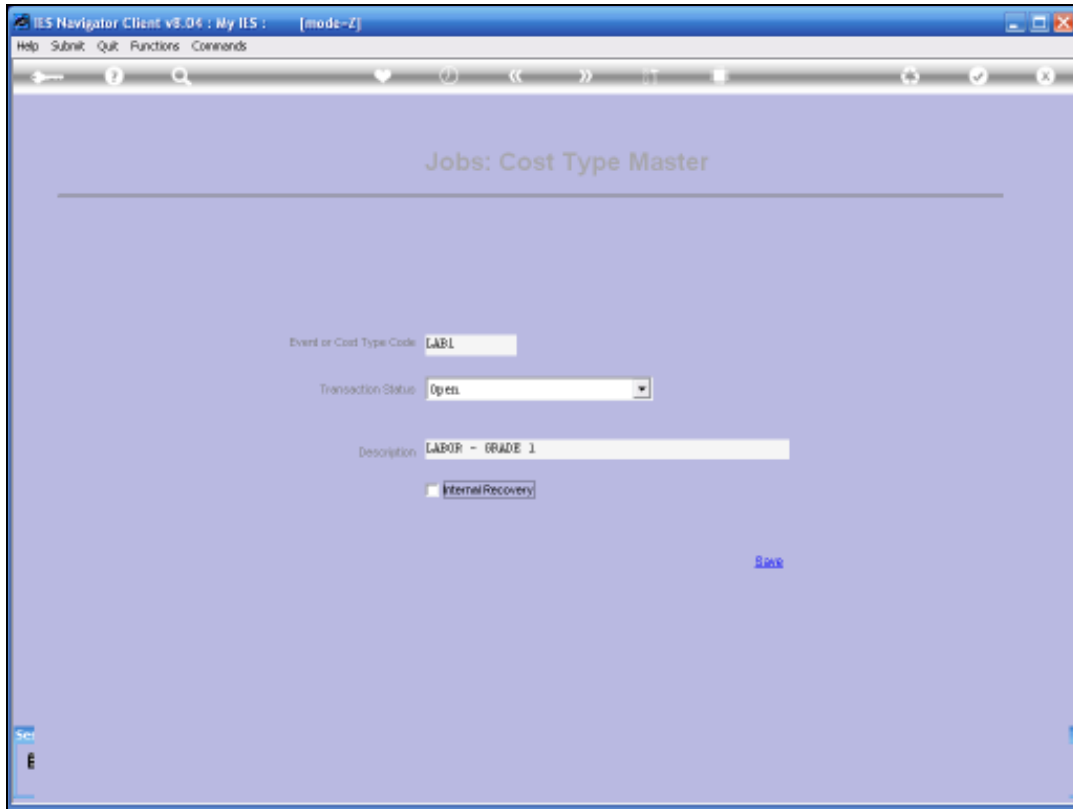
Slide 9
Slide notes:



Slide 10
Slide notes:



Slide 11
Slide notes:



Slide 12
Slide notes:

The screenshot shows a web browser window titled "IES Navigator Client vs. 04 : My IIS : [mode-Z]". The browser's address bar is empty, and the page content is a form titled "Jobs: Cost Type Master". The form has a light purple background and contains the following fields and controls:

- "Event or Cost Type Code": A text input field.
- "Transaction Status": A dropdown menu with "Open" selected.
- "Description": A long text input field.
- "Internal Recovery": A checkbox.
- "Save": A button.

At the bottom left of the browser window, there is a small "Set" button and a keyboard shortcut "E".

Slide 13

Slide notes:

So we will use this Option to define all the Cost Types that we need for our Rule Sheet Templates in Service Jobs.