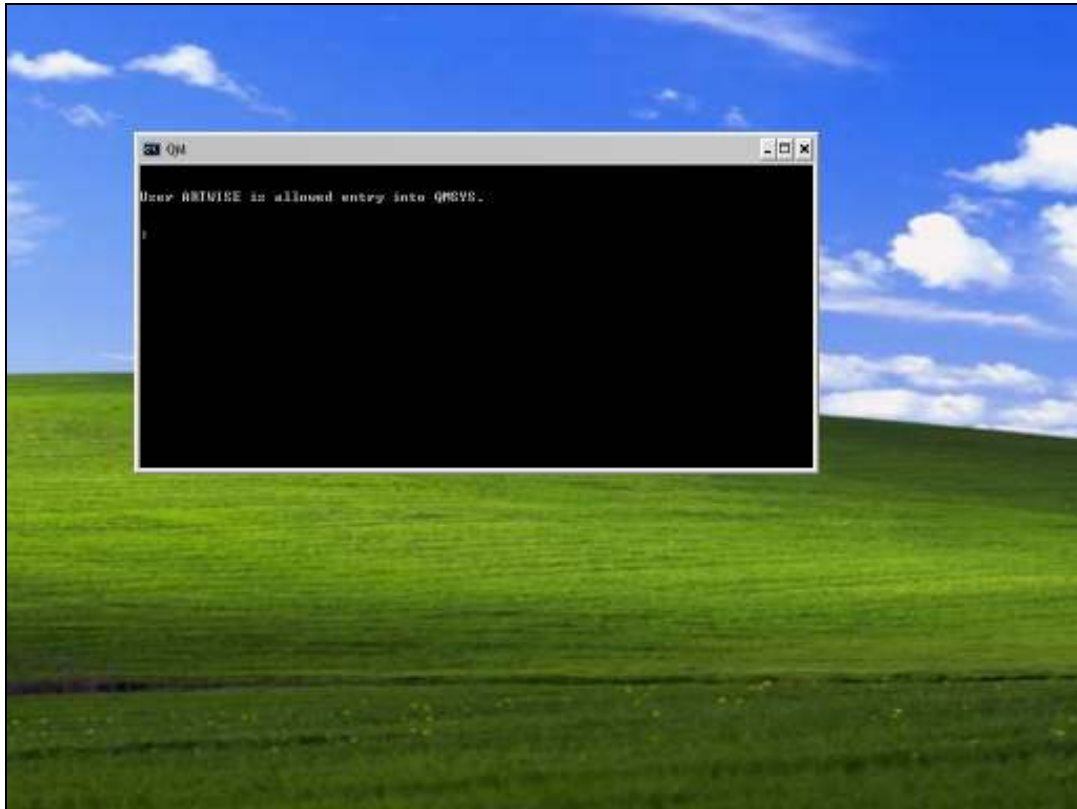


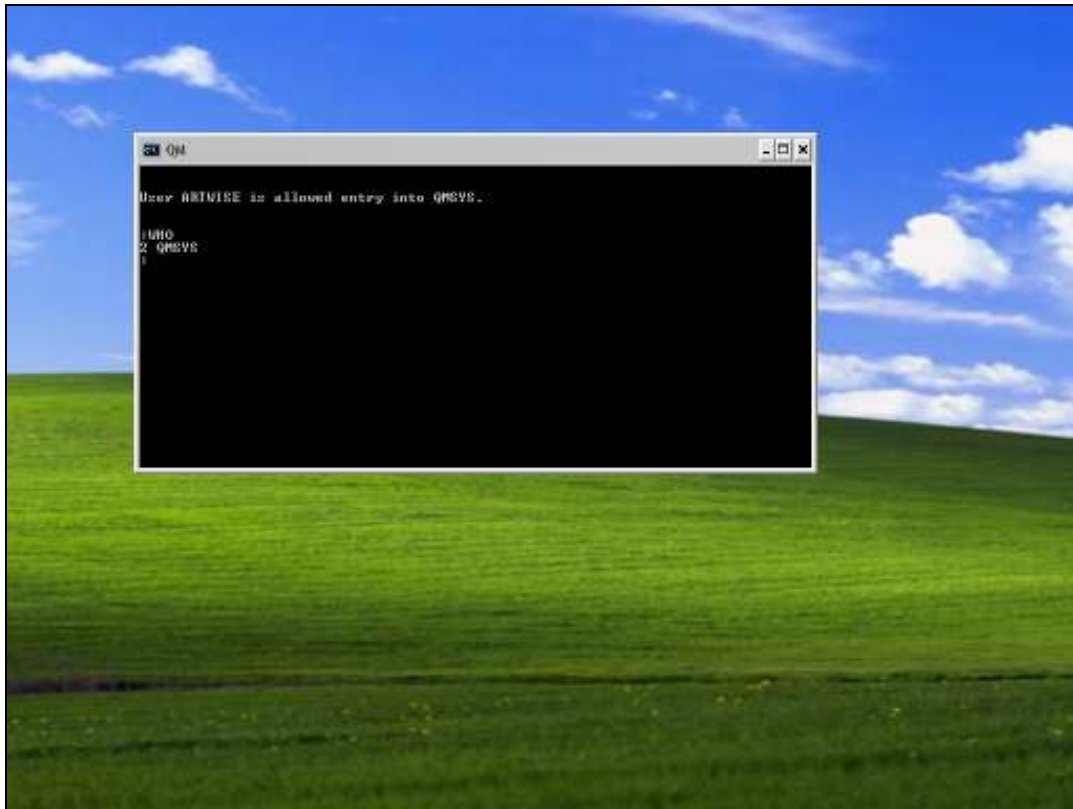
### Slide 1

Slide notes: In a new installation of IES, it is necessary to register a User Code called "infolabc" in the QM Database. We use a Console Session to do this.



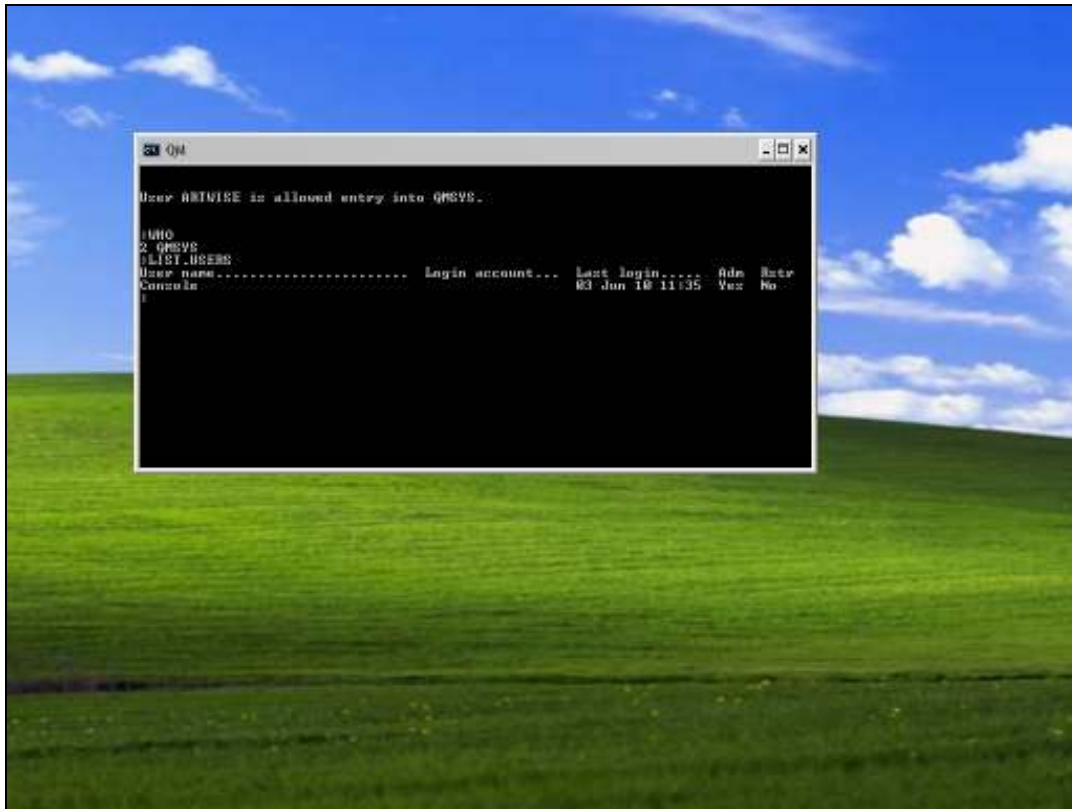
Slide 2

Slide notes: The command "WHO" will confirm whether we are in the right place. We need to be in the QMSYS Account.



### Slide 3

Slide notes: And as we can see, we are in the right place. When we issue the command "LIST.USERS" in a new installation, there is only 1 User so far, called "Console".



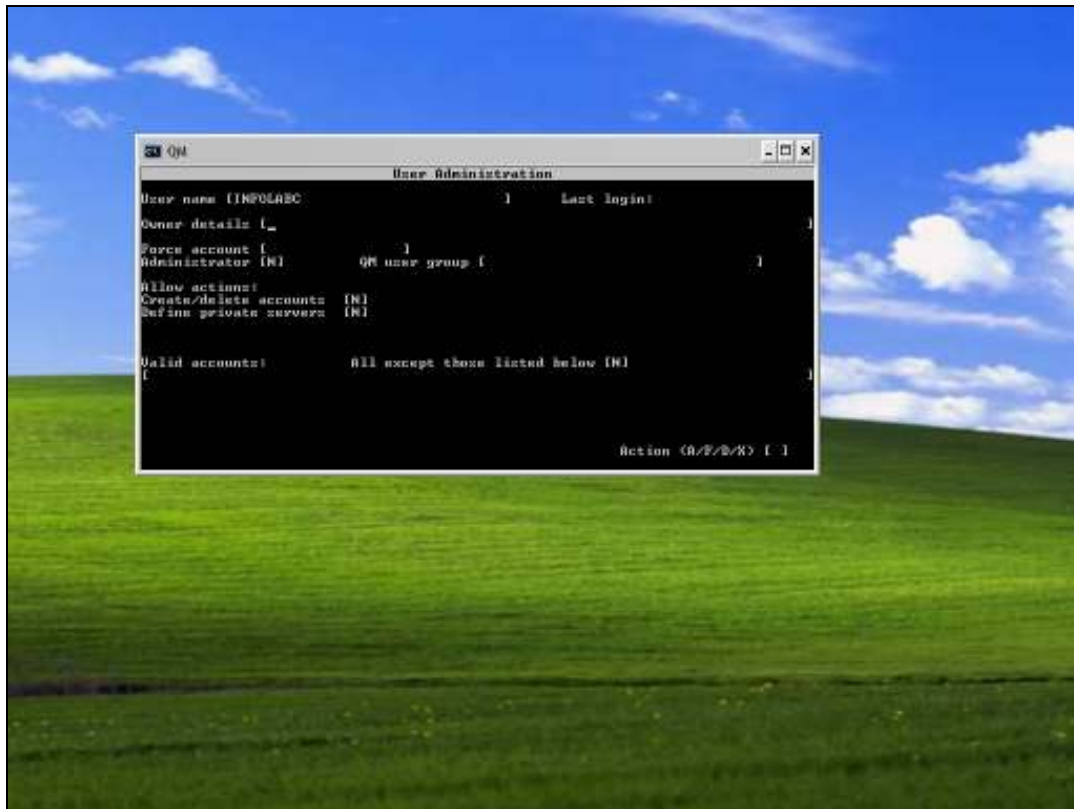
Slide 4

Slide notes: To create a new User Account, we use the "ADMIN.USER" command.



Slide 5

Slide notes: The User to create is INFOLABC.



Slide 6

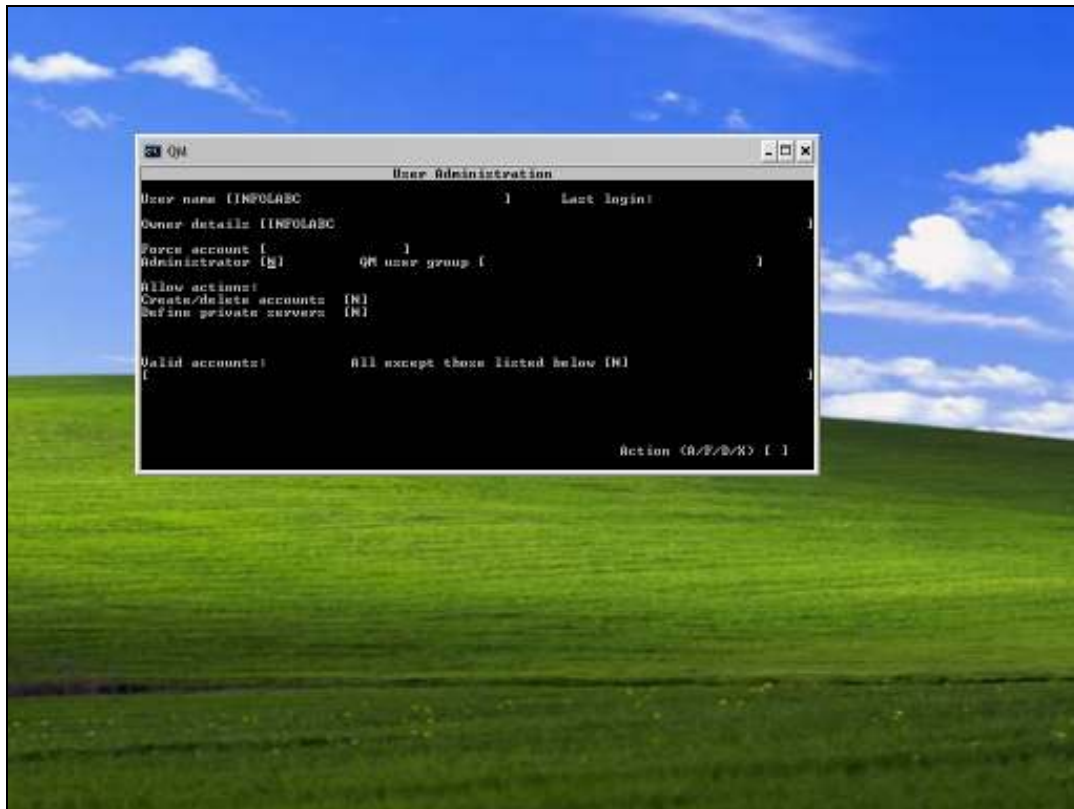
Slide notes: The owner is also INFOLABC.



Slide 7

Slide notes: 'Force Account' MUST be null.

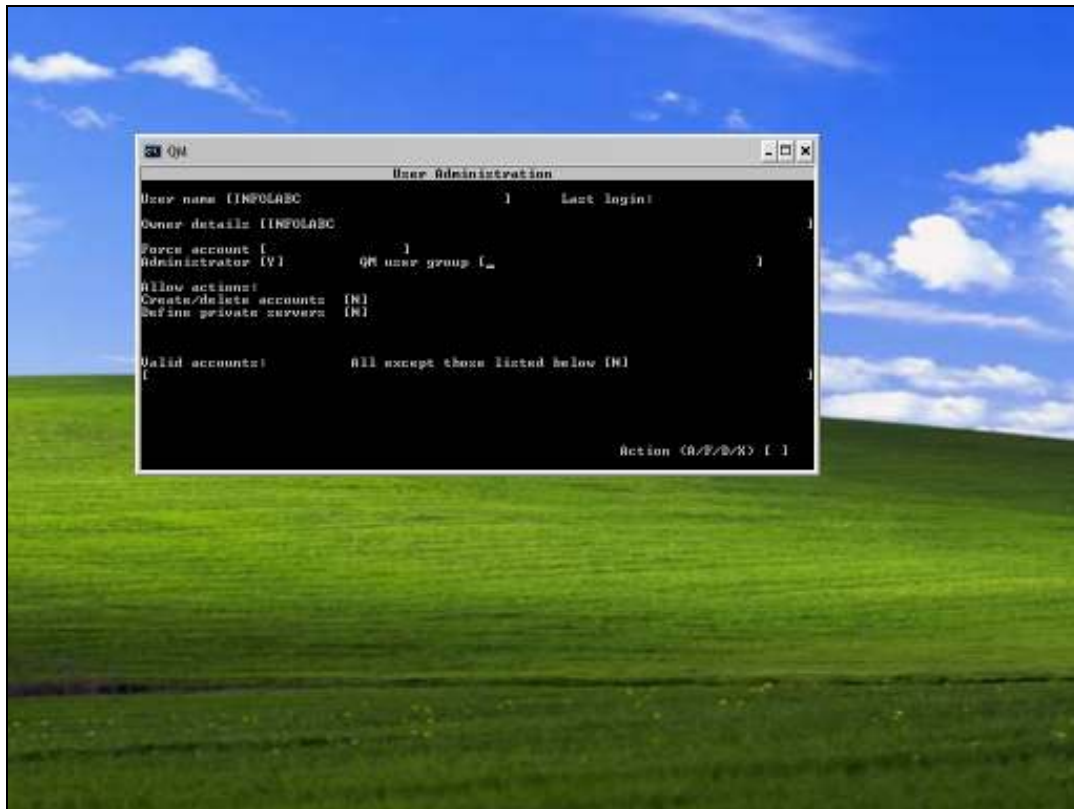




Slide 8

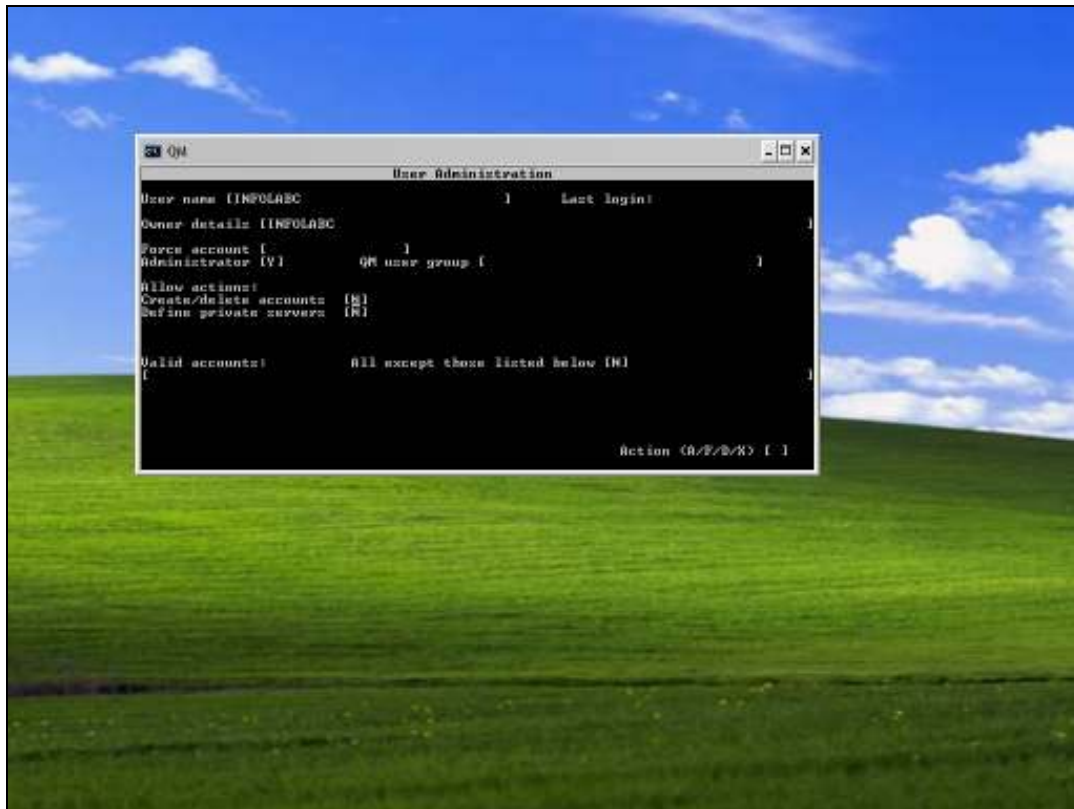
Slide notes: Administrator is "Y".





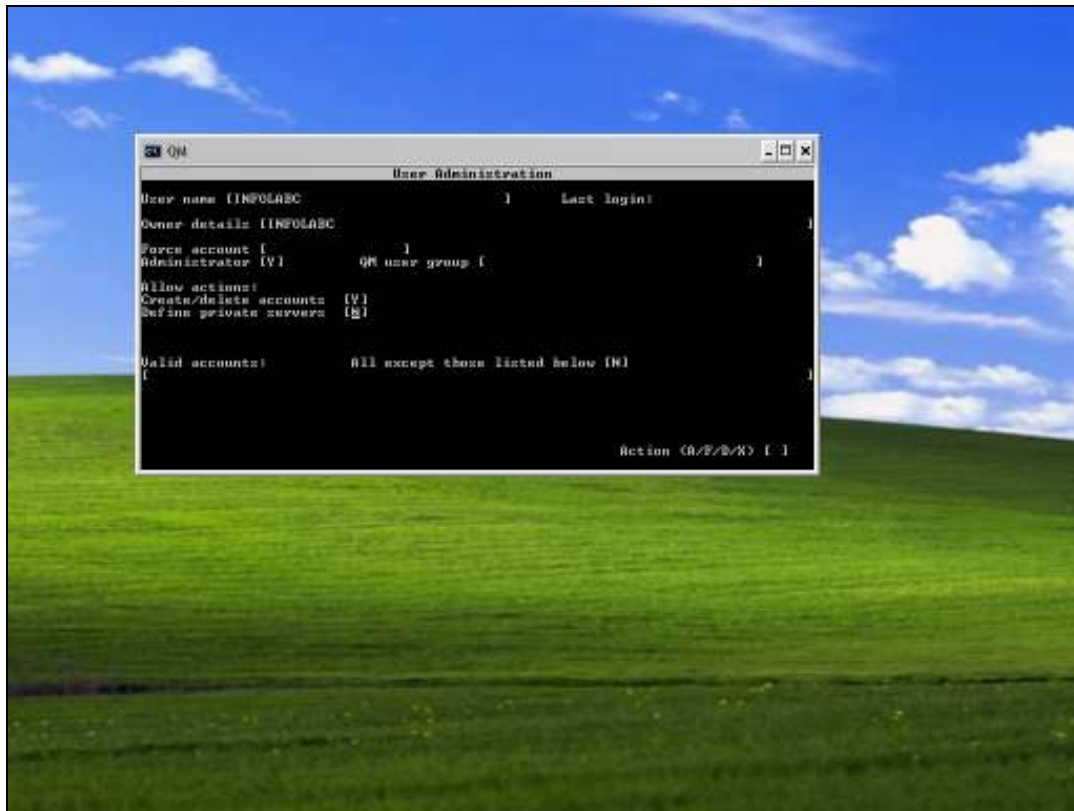
Slide 9

Slide notes: User Group is NULL.



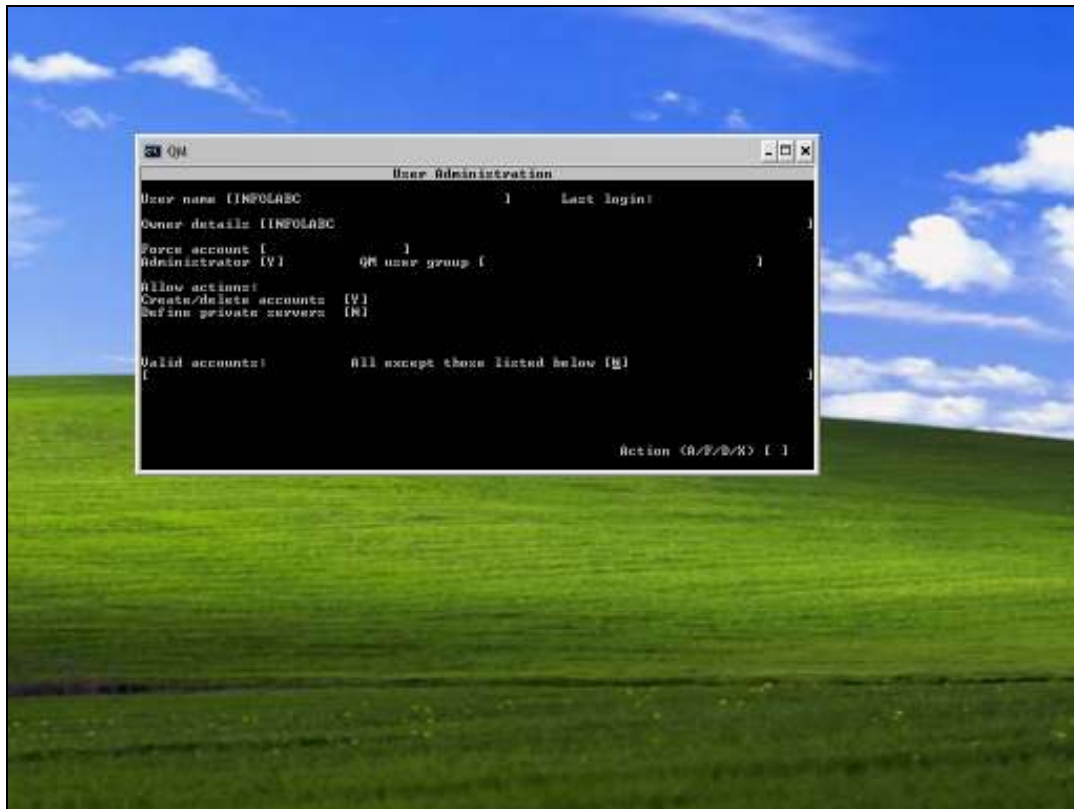
Slide 10

Slide notes: Create/Delete Accounts is "Y".



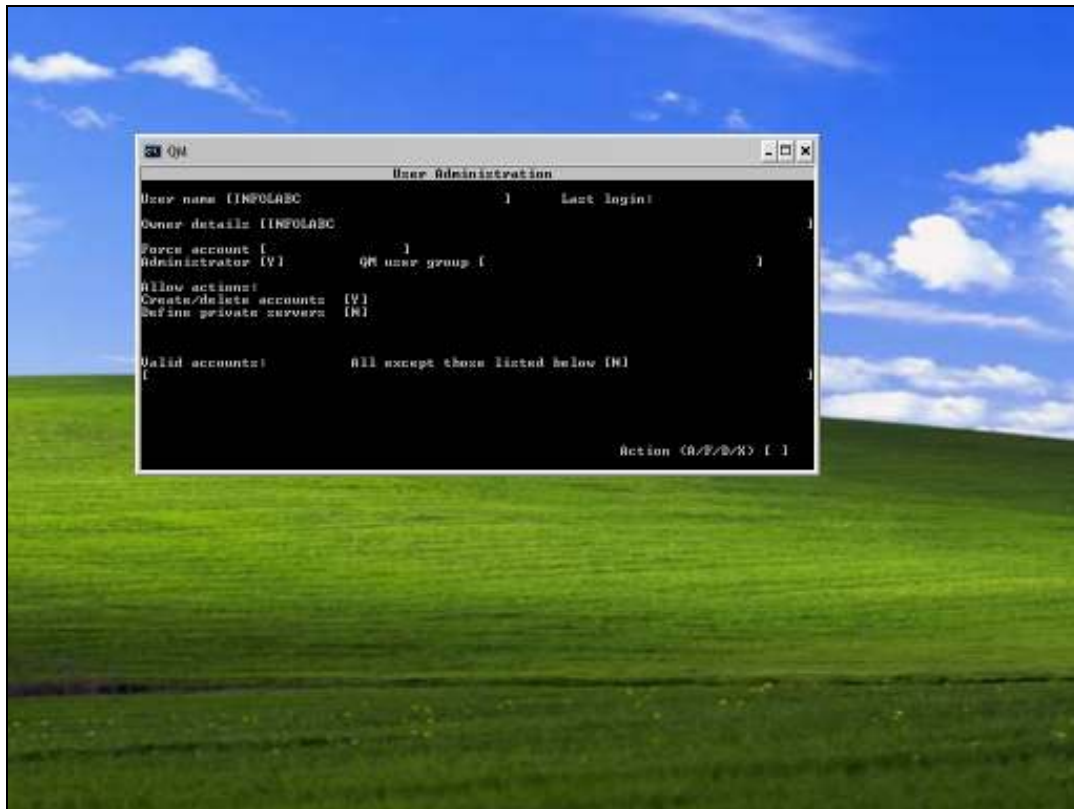
Slide 11

Slide notes: For the rest of the fields, just press ENTER until we get to the end.



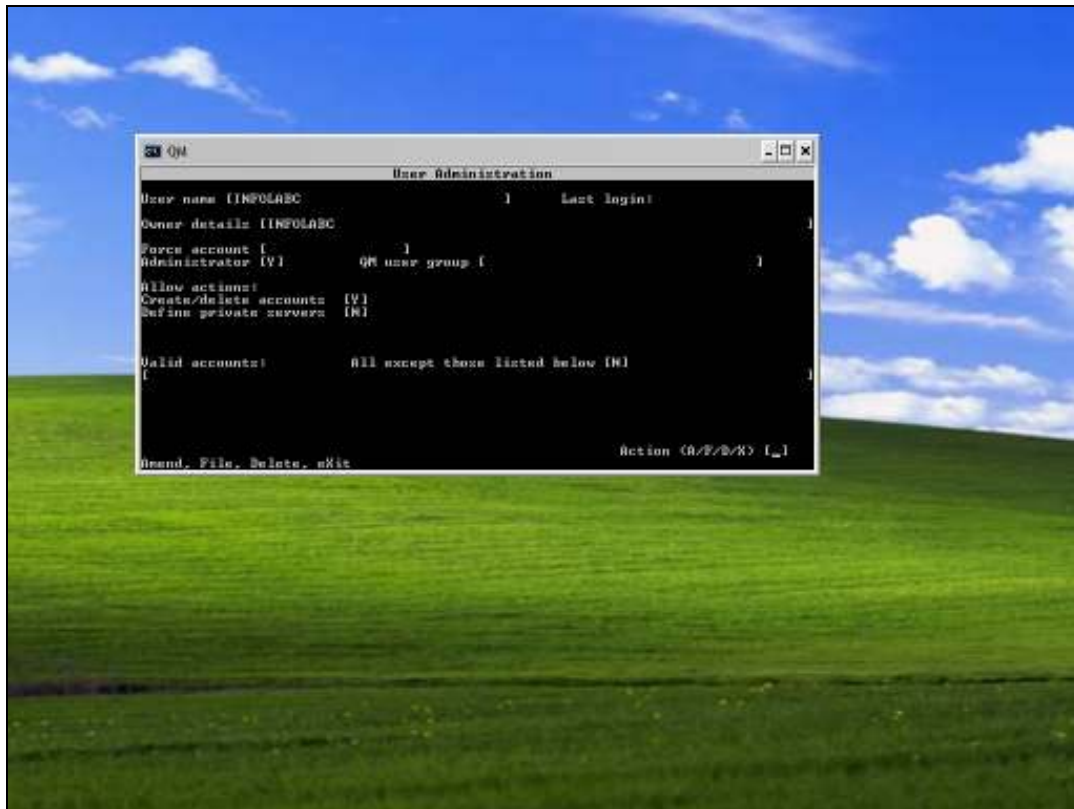
Slide 12

Slide notes:



Slide 13

Slide notes:



Slide 14

Slide notes: And then choose "F" to file the item.



Slide 15

Slide notes: Now just press ENTER to exit.





Slide 16

Slide notes: If we do "LIST.USERS" now, then the INFOLABC User Code is present.



Slide 17

Slide notes:



Slide 18

Slide notes: