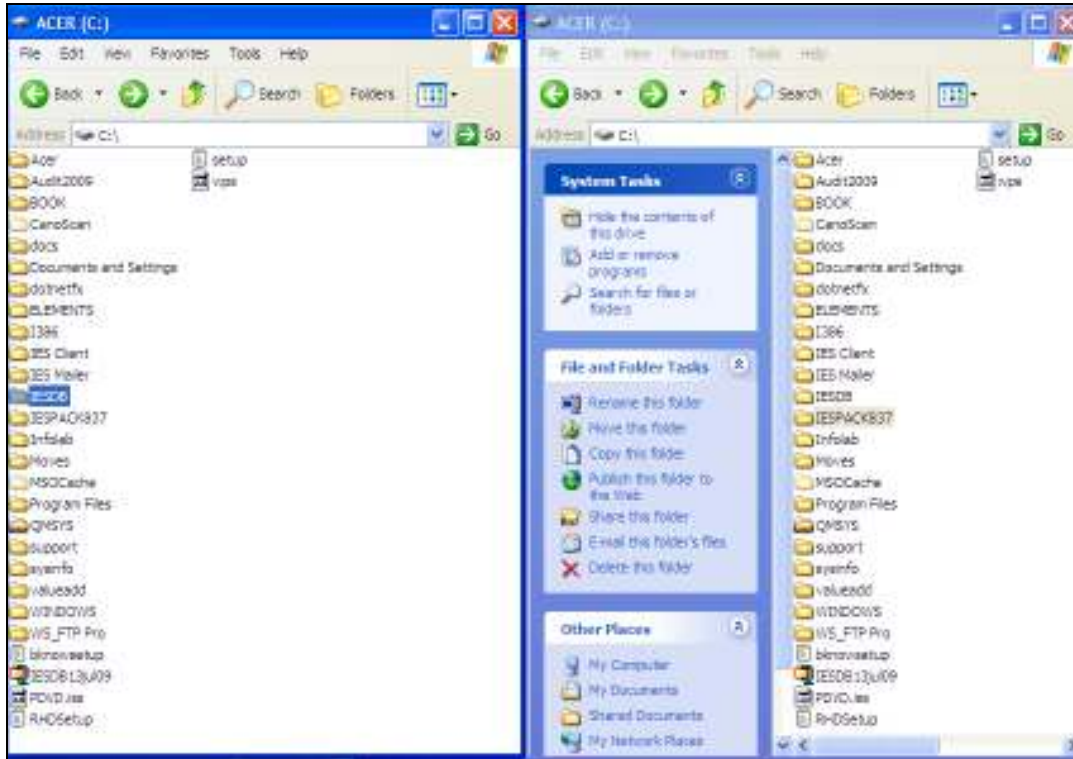


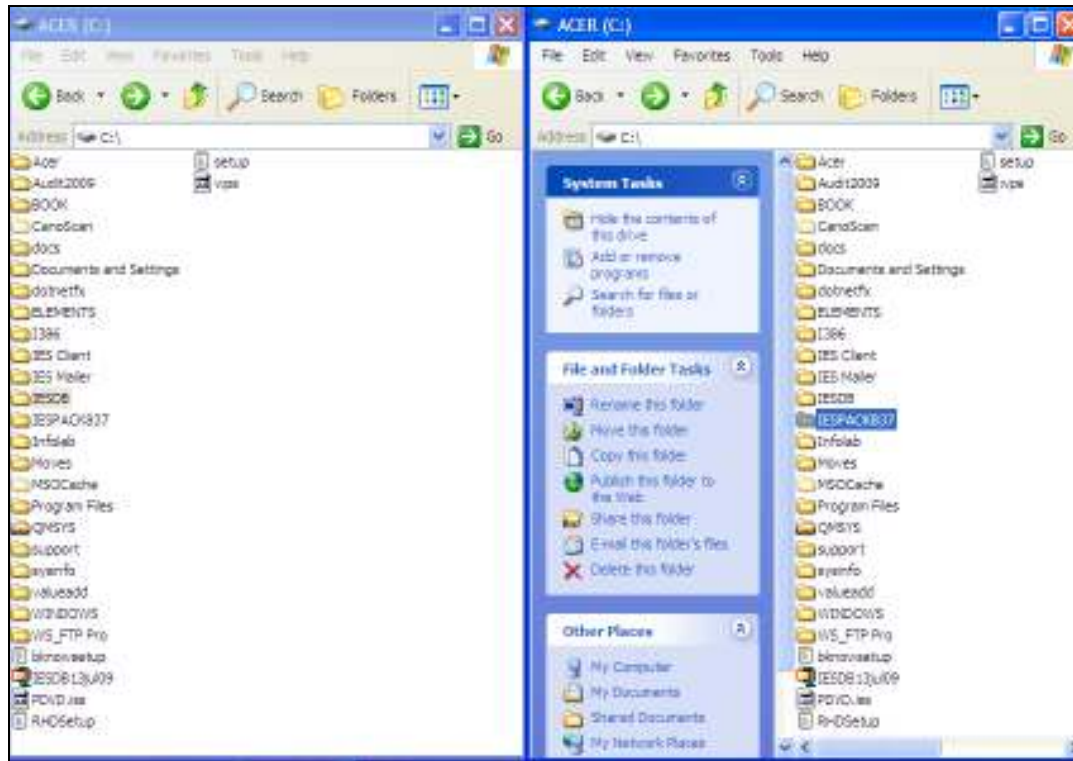
### Slide 1

Slide notes: In this tutorial, we see how to use the Datamarts from the IES Server install, to perform an upgrade of IES Server to a new release.



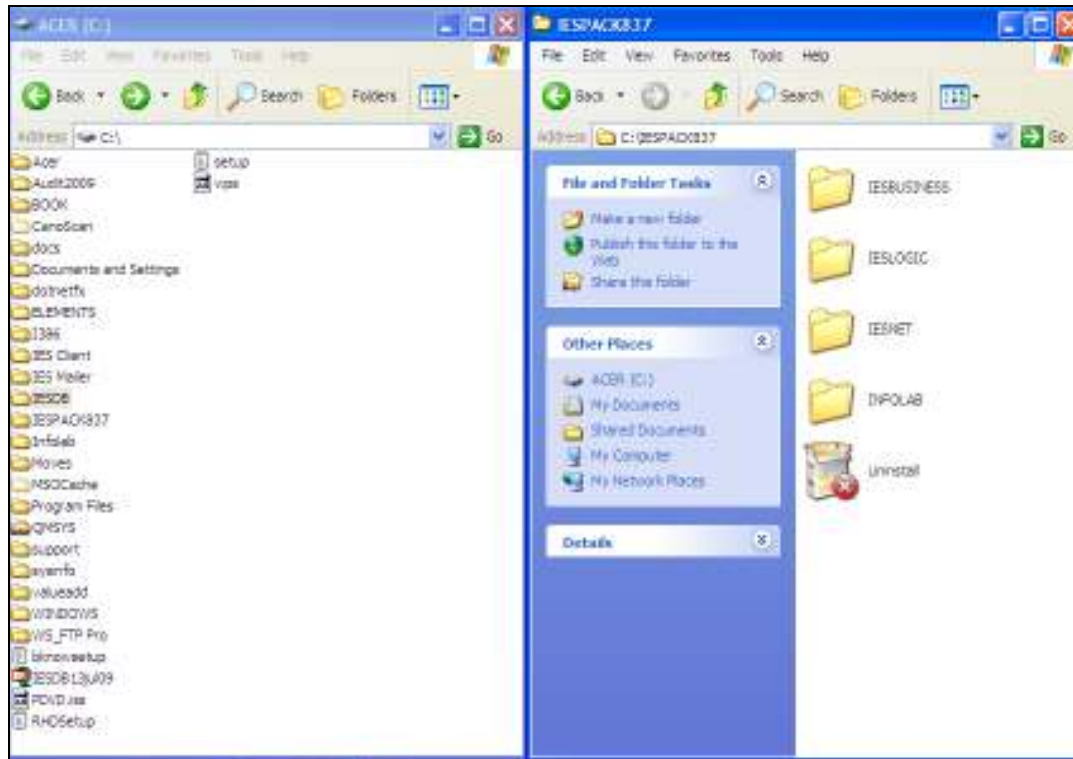
Slide 2

Slide notes: At a current installation, there is already an IESDB folder with our current Datamarts.



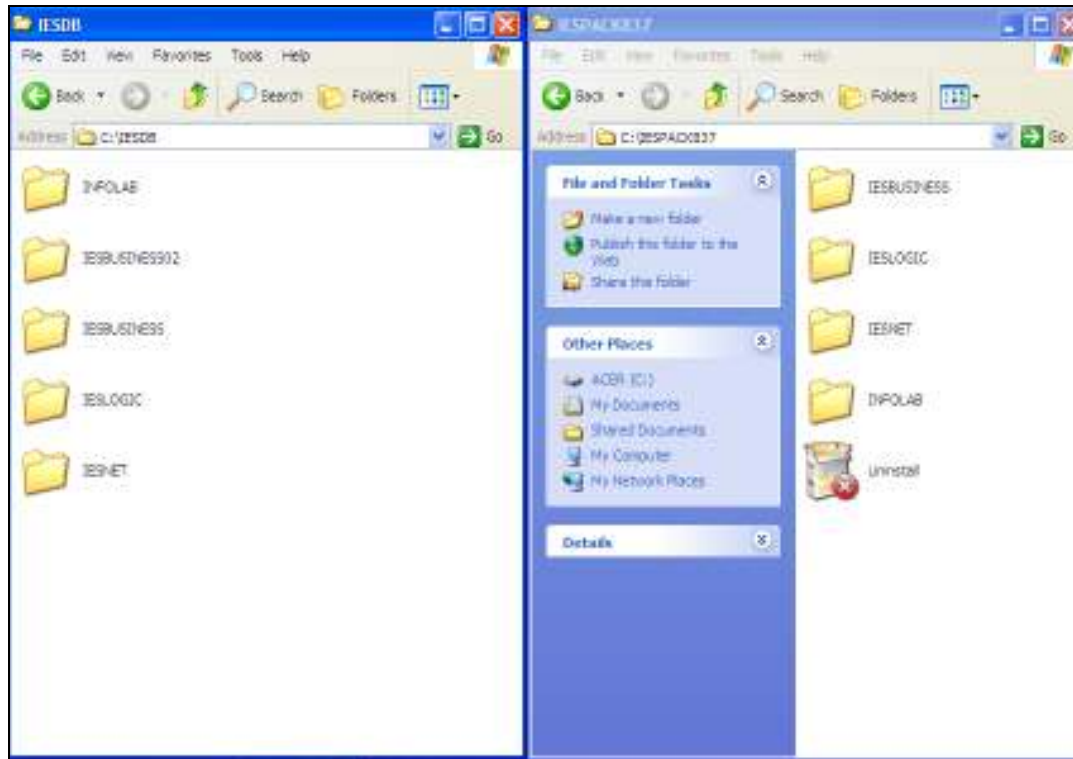
### Slide 3

Slide notes: And from the installation of the IES Server software, we have an IESPACK folder with IES Datamarts.



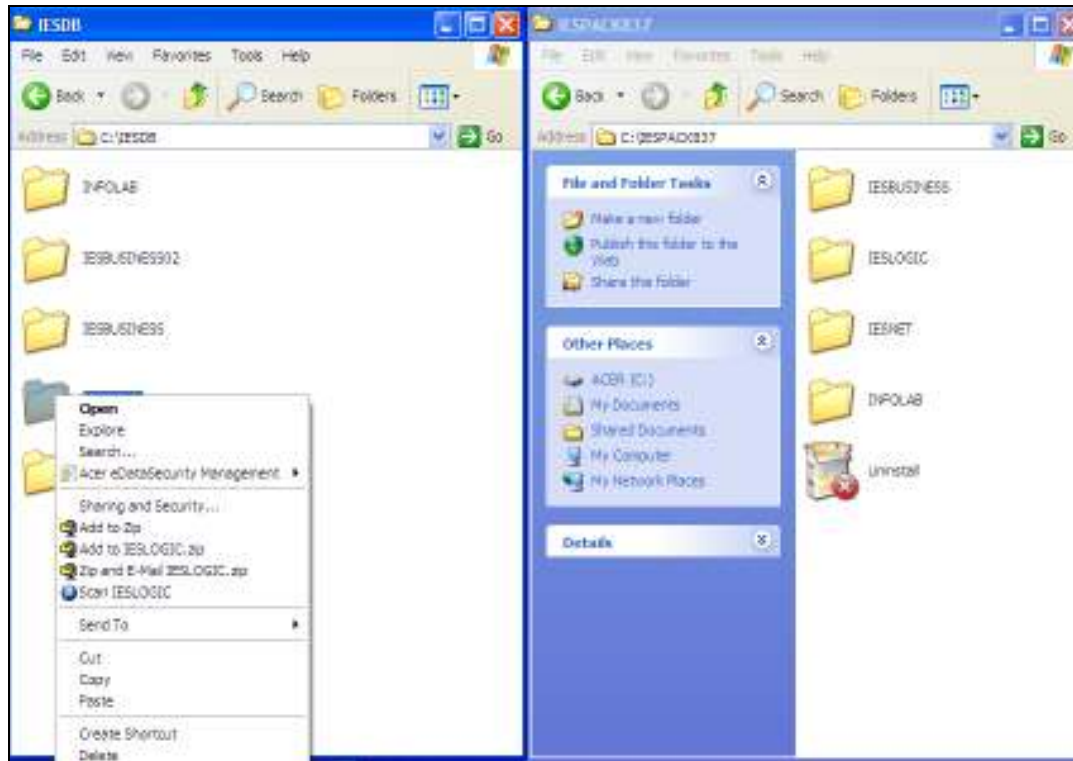
Slide 4

Slide notes: The Datamarts in the IESPACK can be used for new installations, and also for Upgrades.



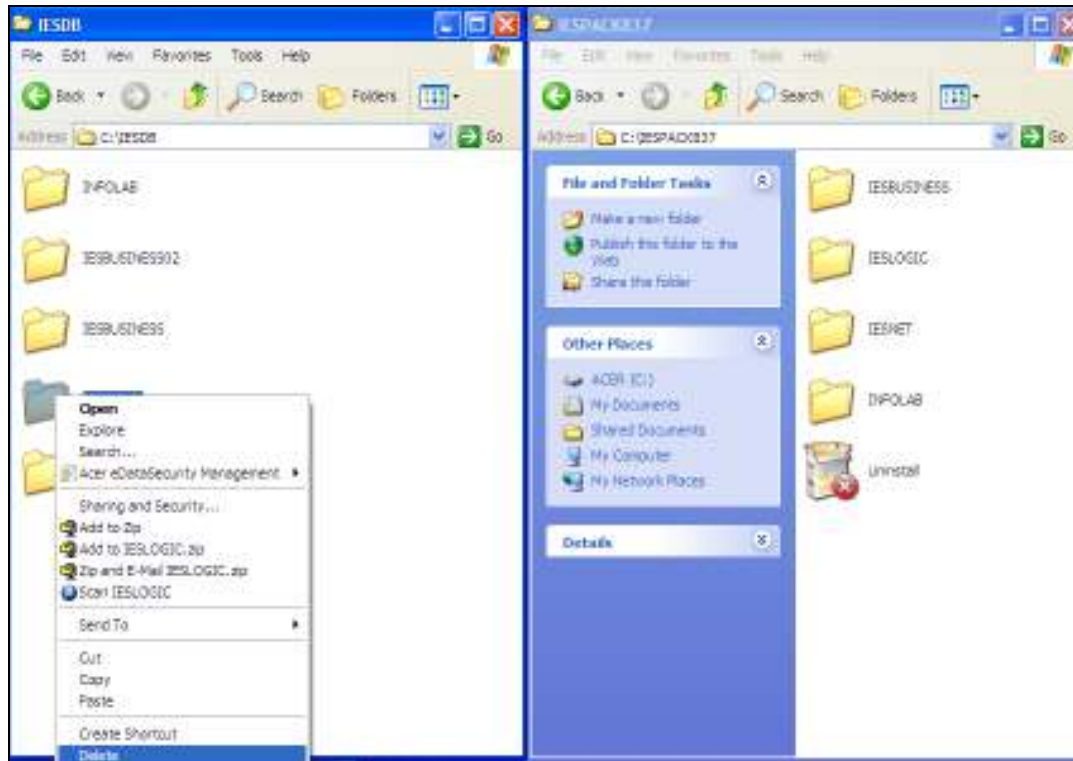
Slide 5

Slide notes: In IESDB, we see our current Datamarts. At this stage, we have already stopped the Database, so that it is not running, as we will be manipulating the Datamarts.



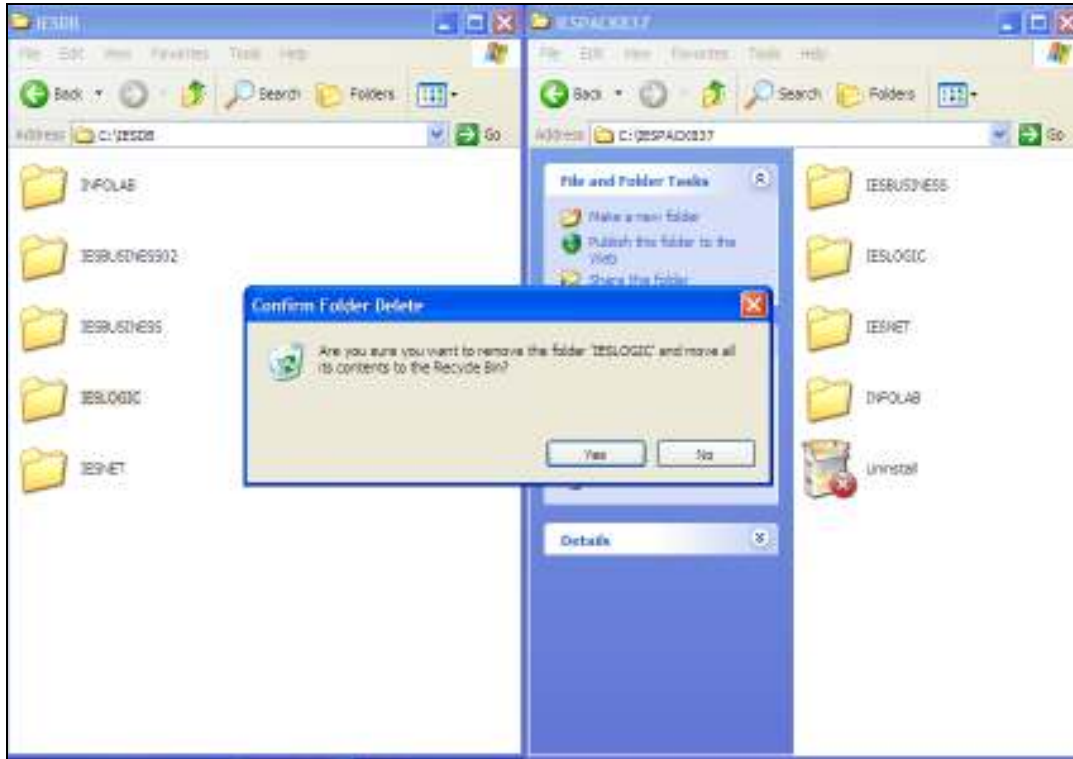
## Slide 6

Slide notes: For an Upgrade, we delete the current IESLOGIC Datamart and move the new version of IESLOGIC into the Database.



### Slide 7

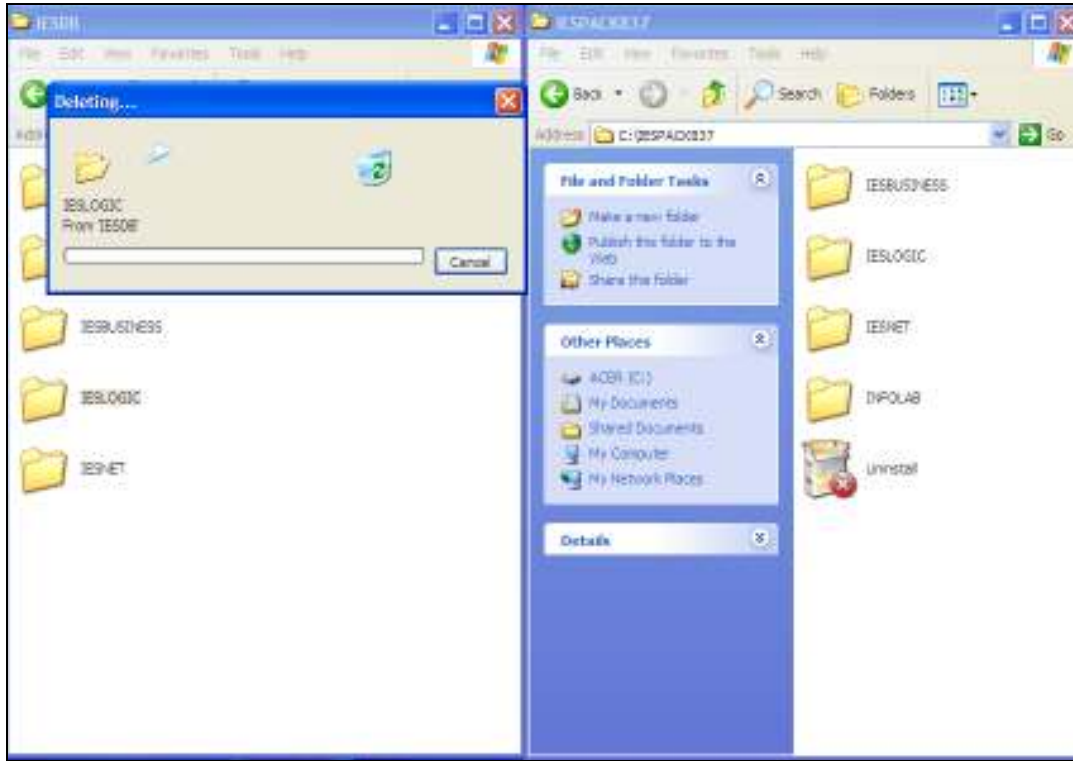
Slide notes: In this example, we are only deleting IESLOGIC, but if there is a current KERNELUPGRADE and BUSINESSUPGRADE present from a previous upgrade procedure, then we will delete that also.



Slide 8

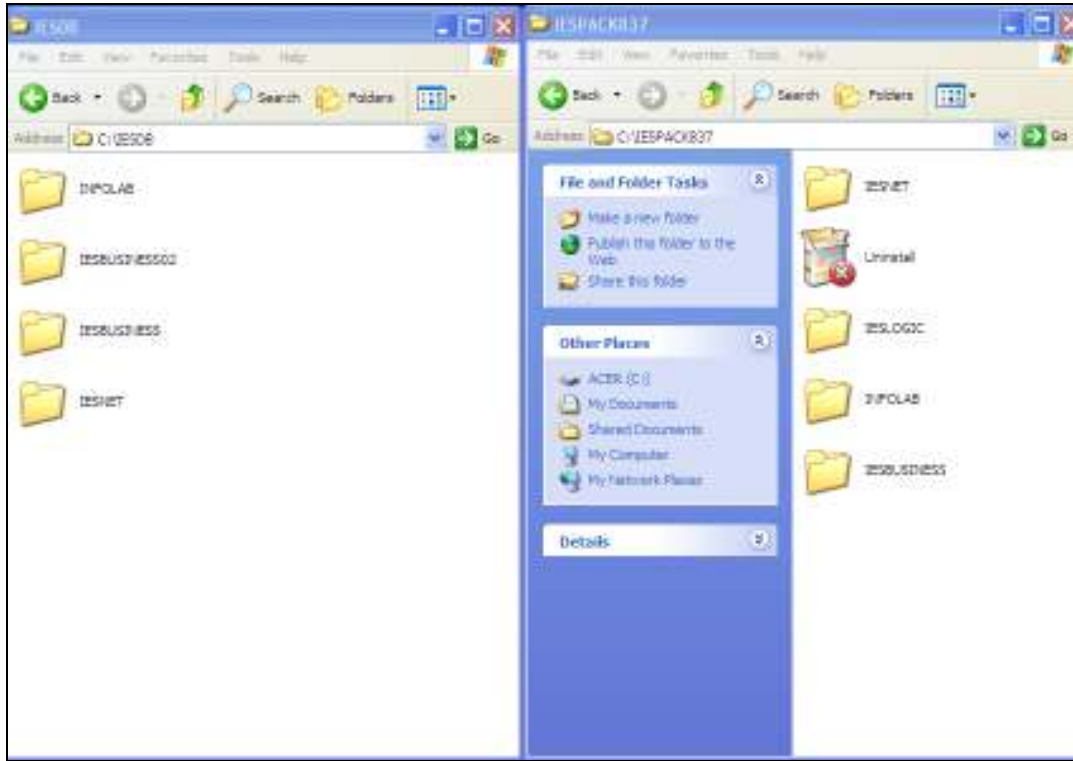
Slide notes:





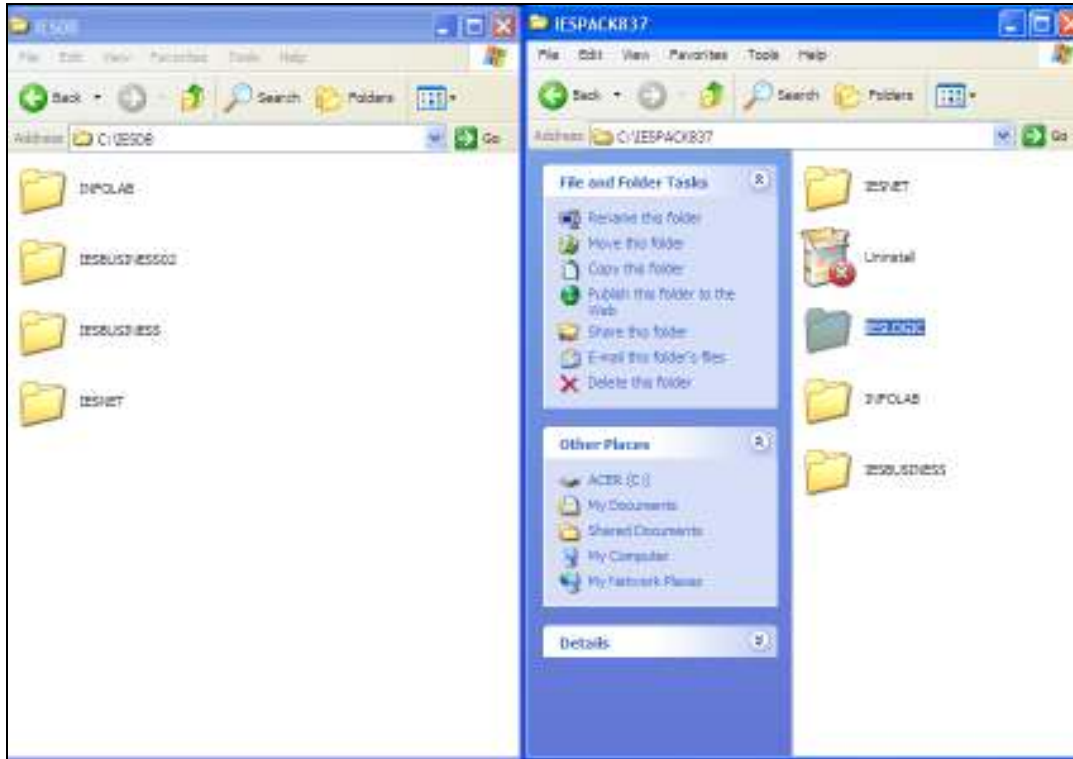
Slide 9

Slide notes:



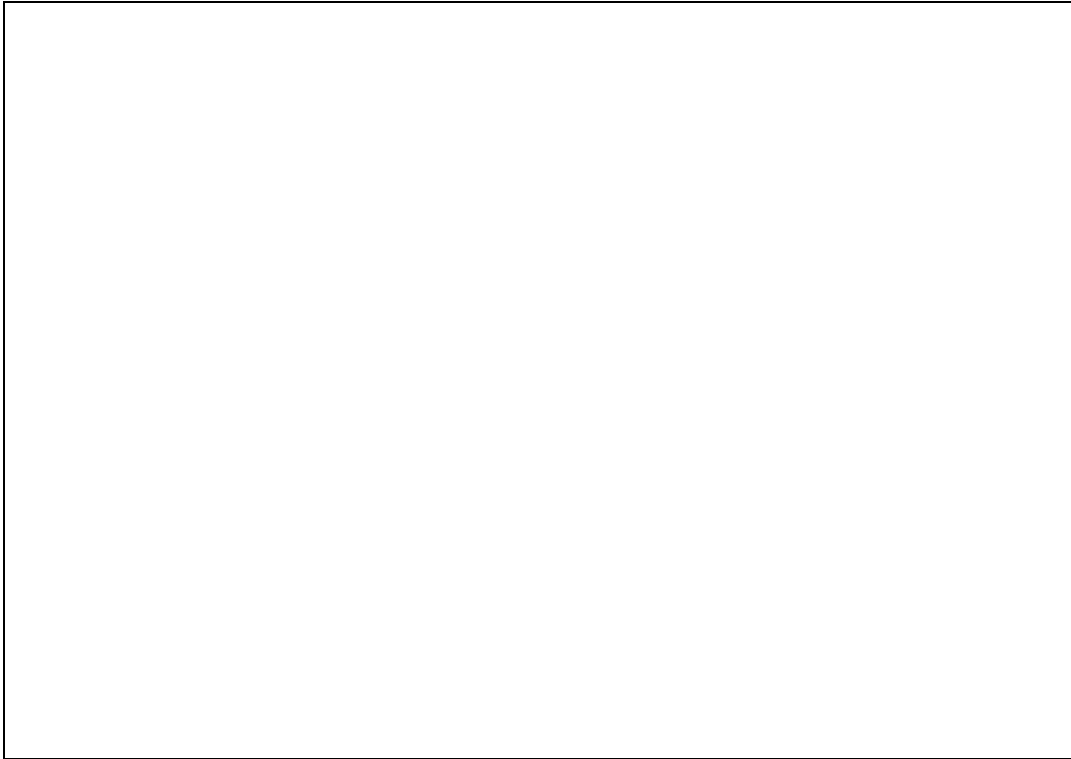
Slide 10

Slide notes:



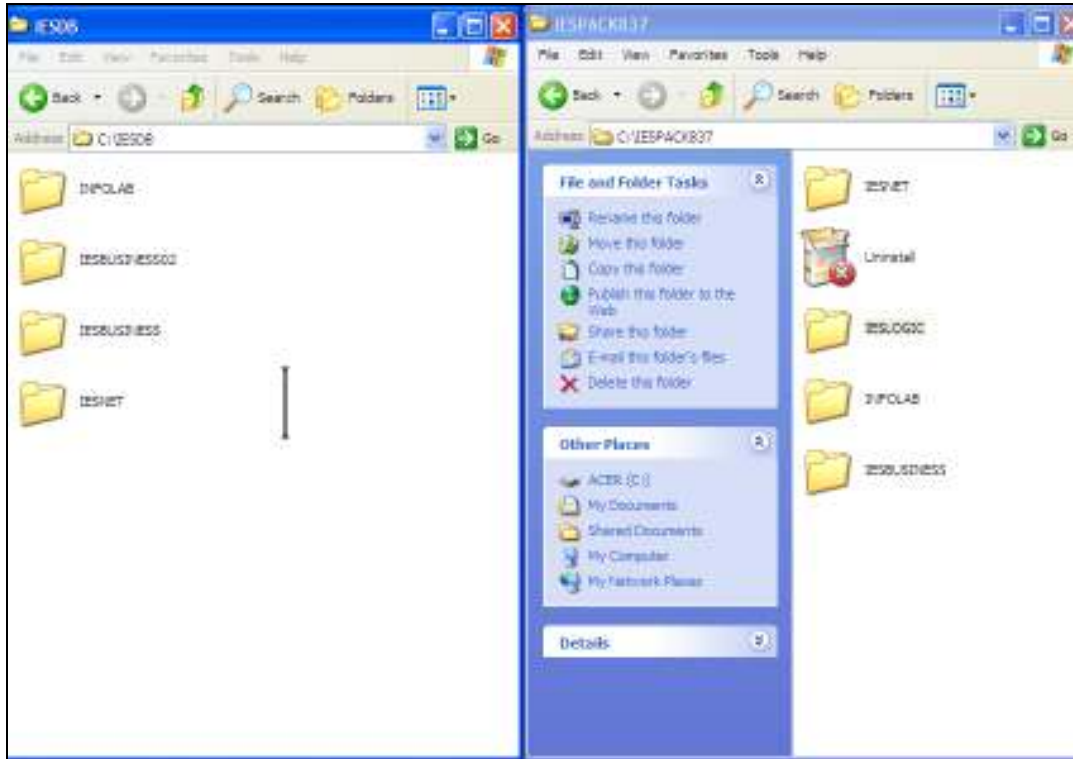
Slide 11

Slide notes:



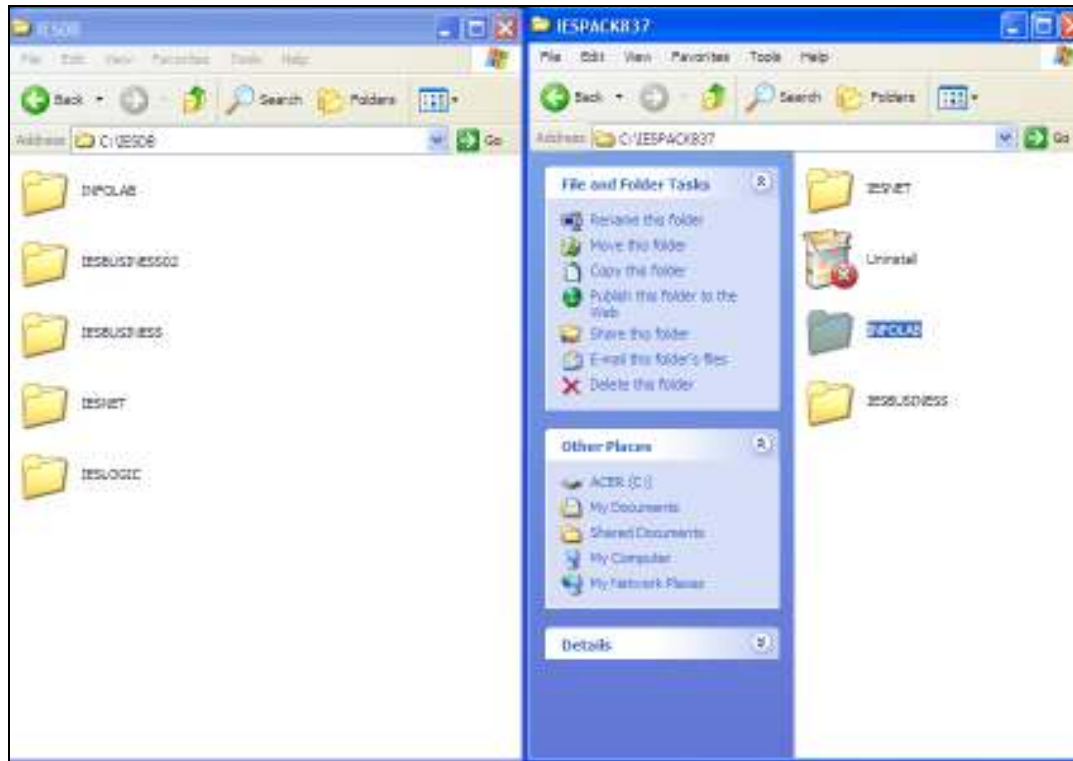
Slide 12

Slide notes:



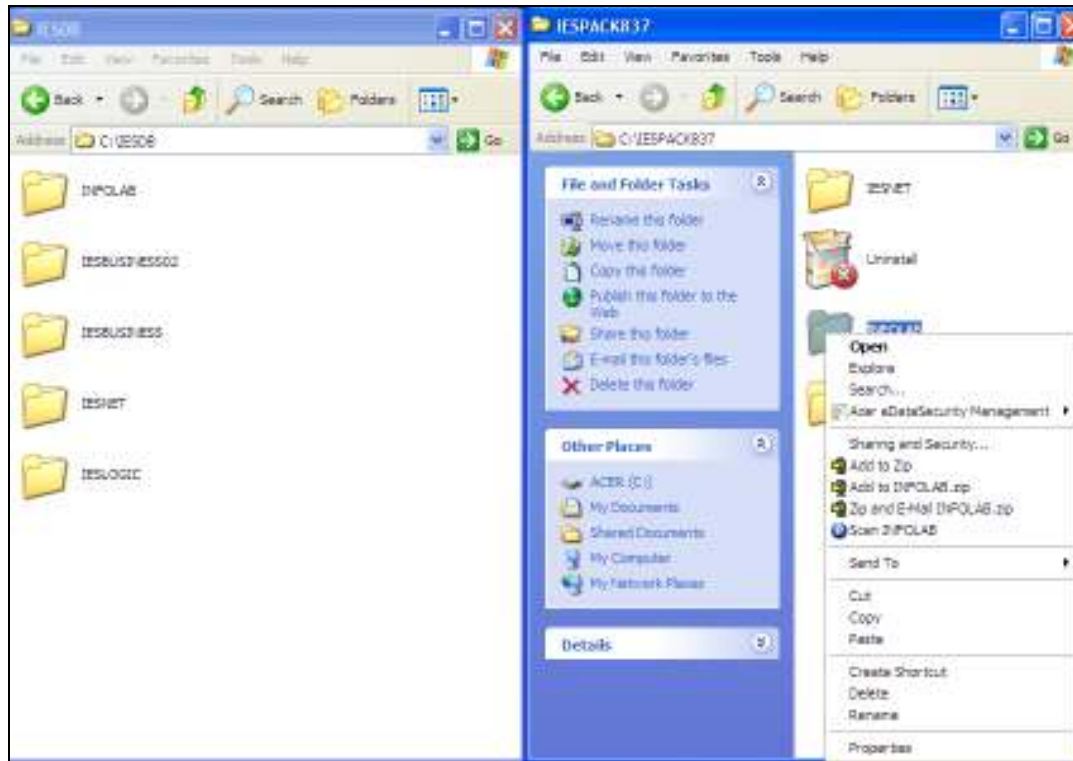
Slide 13

Slide notes:



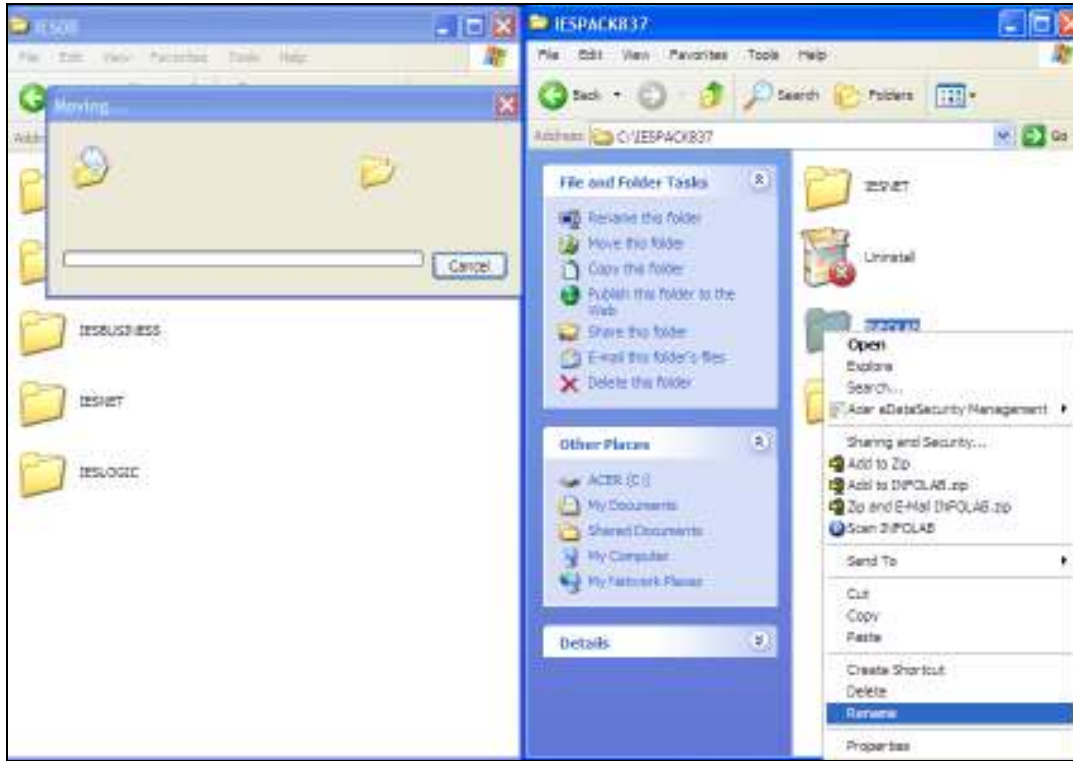
Slide 14

Slide notes: So we now have the latest release of IESLOGIC in position. This Datamart contains the intelligence of IES.



### Slide 15

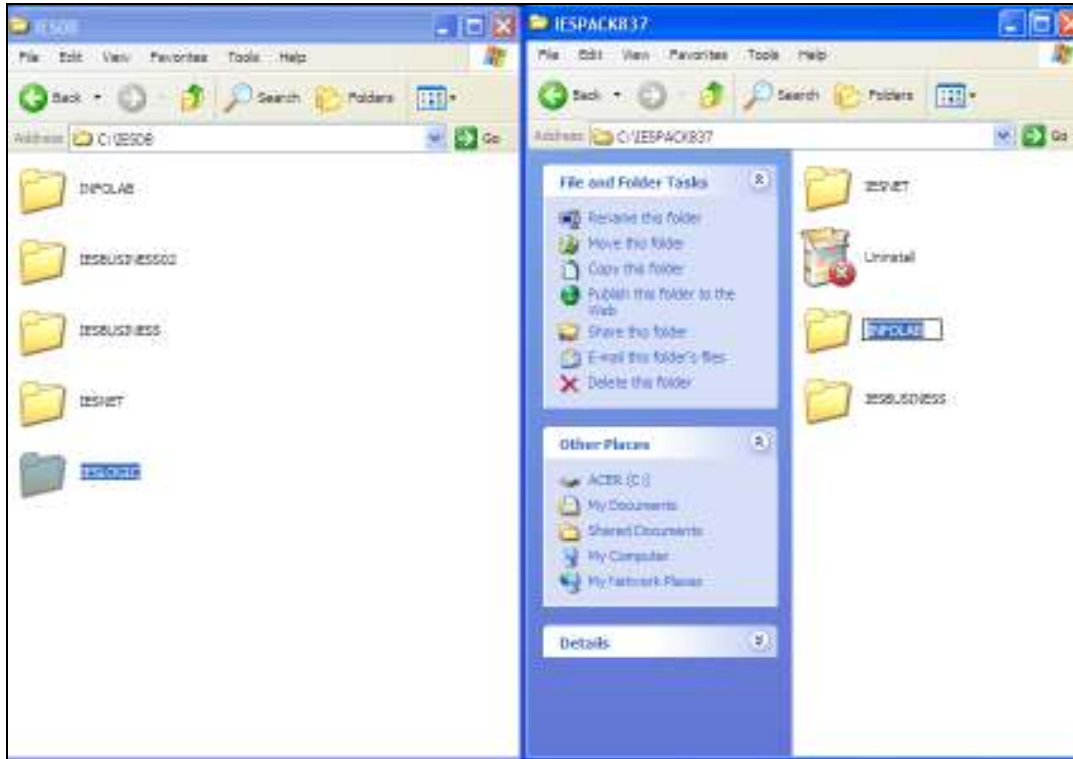
Slide notes: Next, we prepare the source to upgrade our IES Kernel, which is the INFOLAB Datamart. This upgrade is always performed from KERNELUPGRADE, so what we do is to rename the new INFOLAB version as KERNELUPGRADE, and then we move that into the Database also.



Slide 16

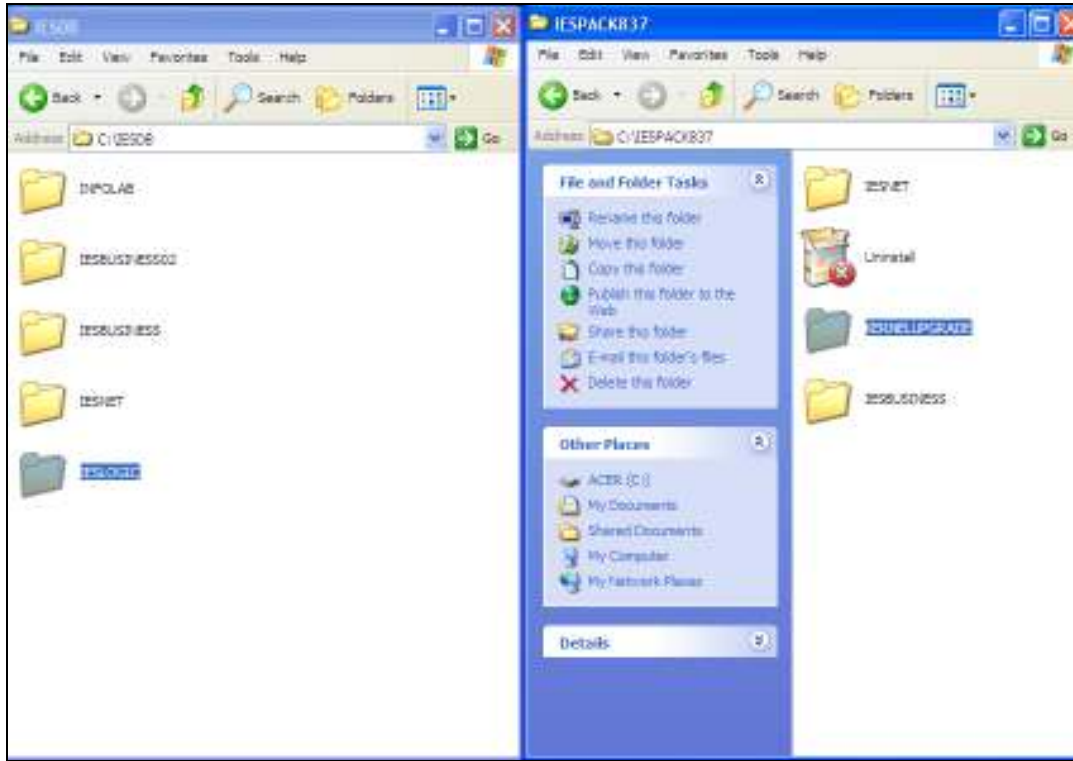
Slide notes:





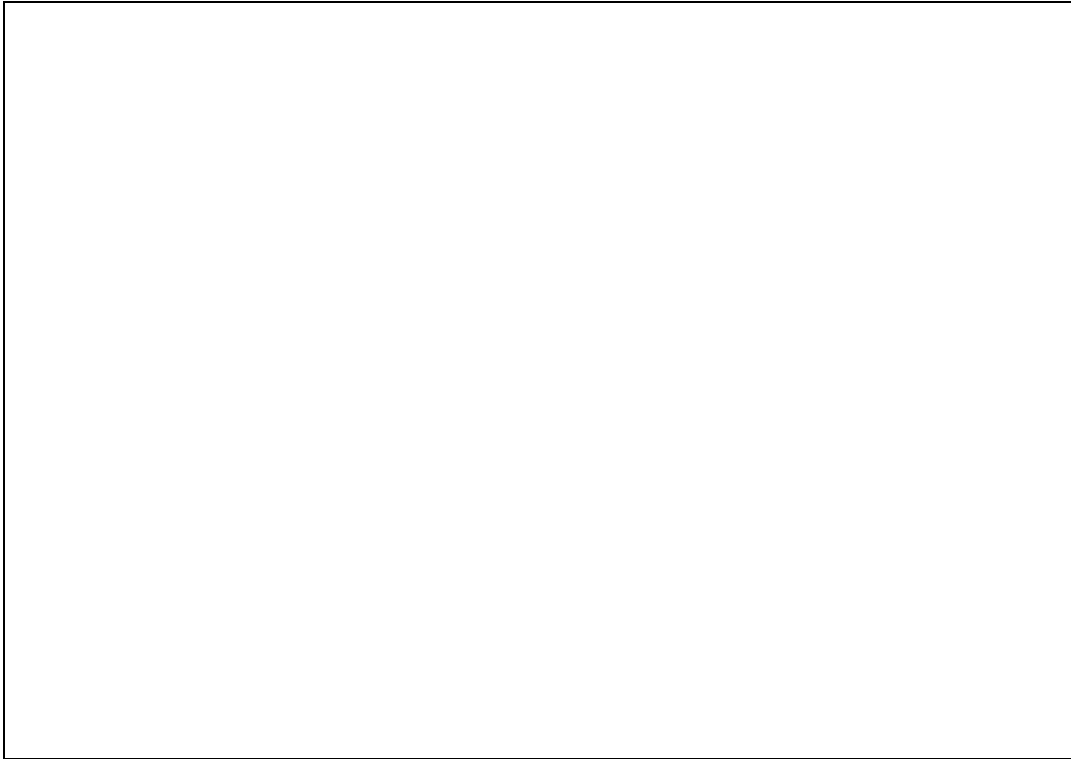
Slide 17

Slide notes:



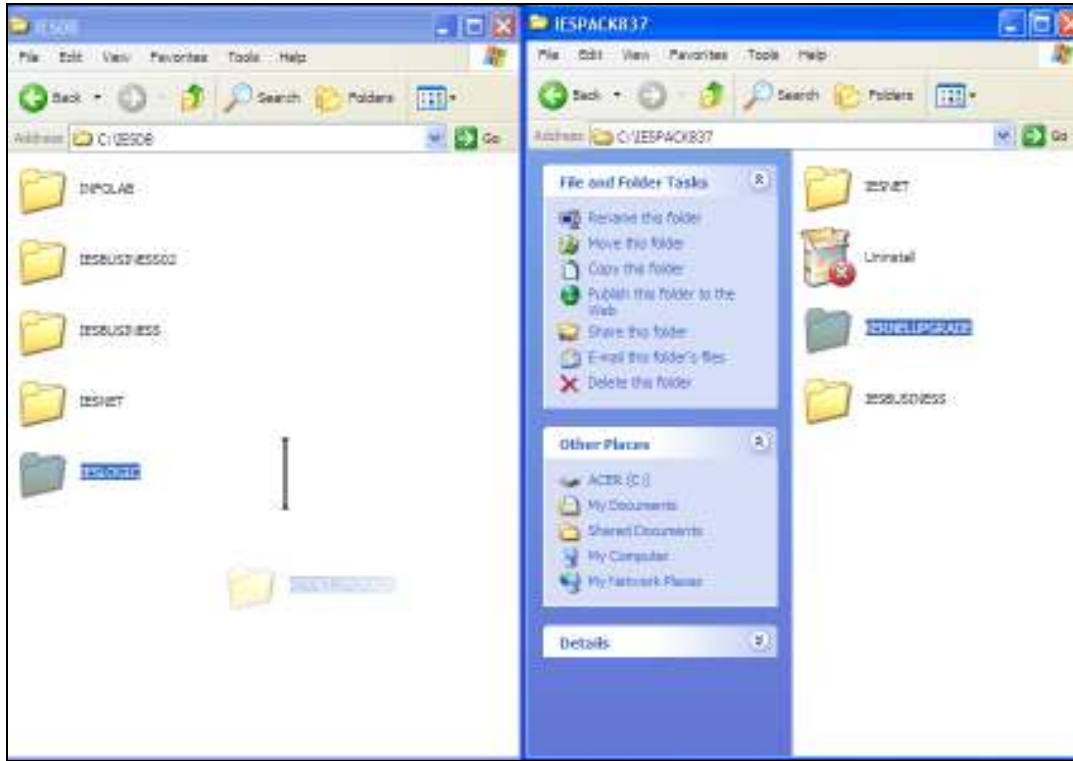
Slide 18

Slide notes:



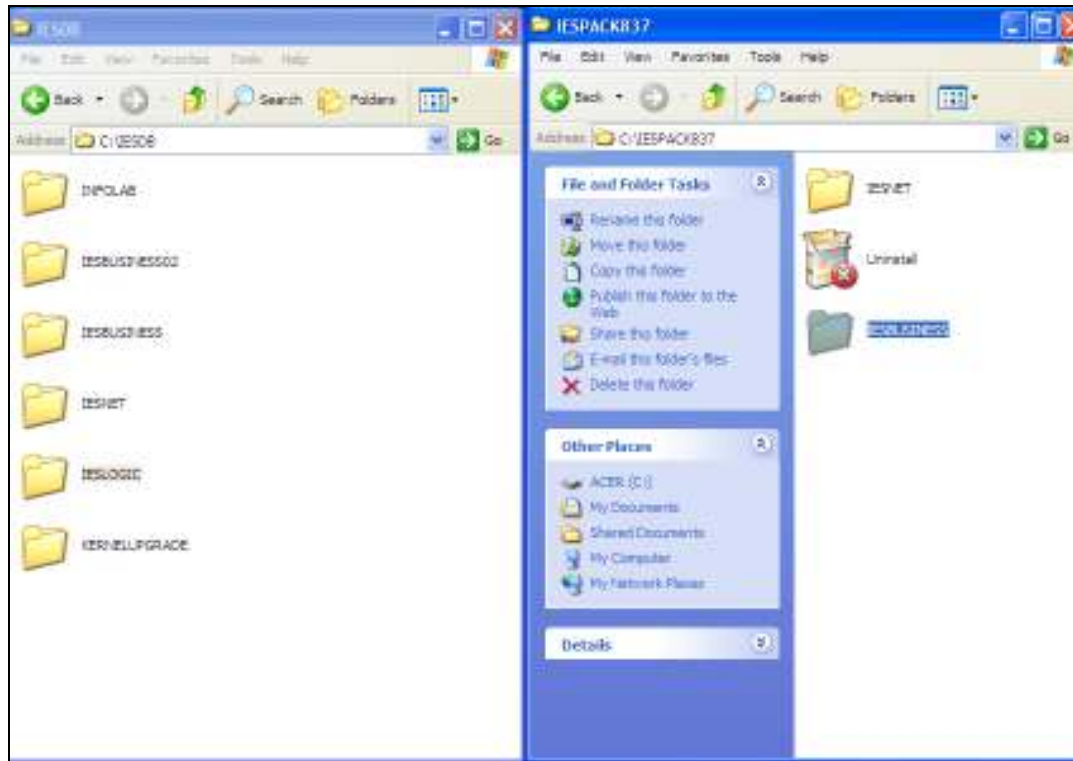
Slide 19

Slide notes:



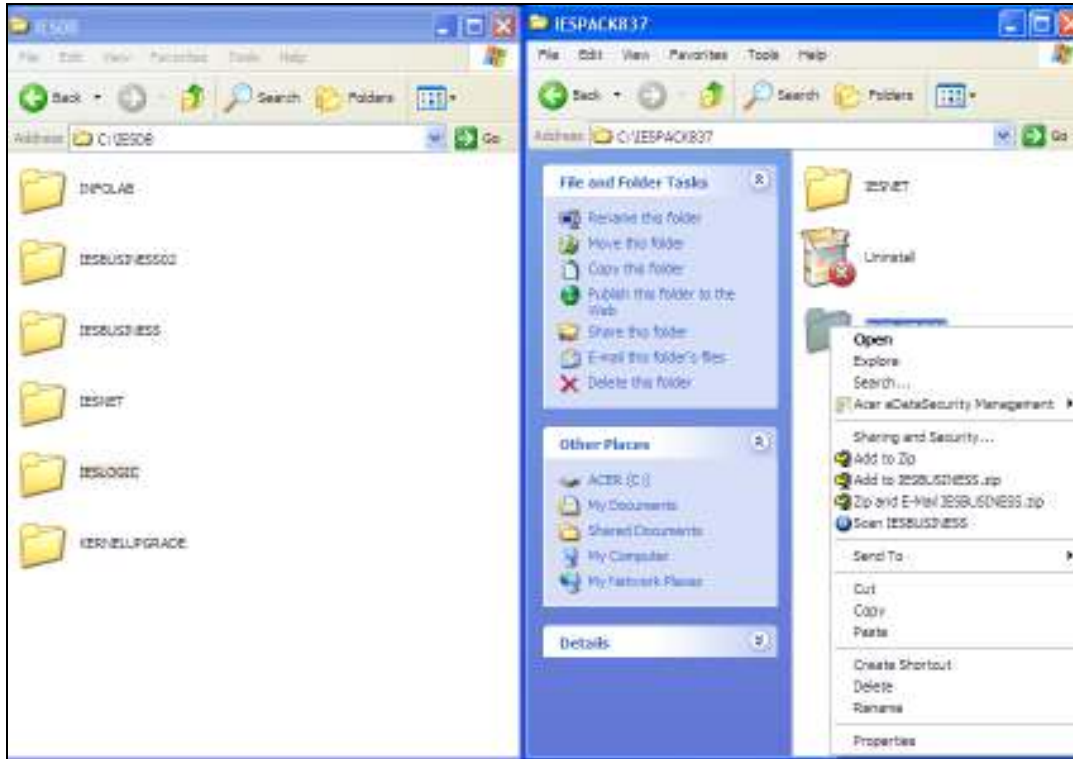
Slide 20

Slide notes:



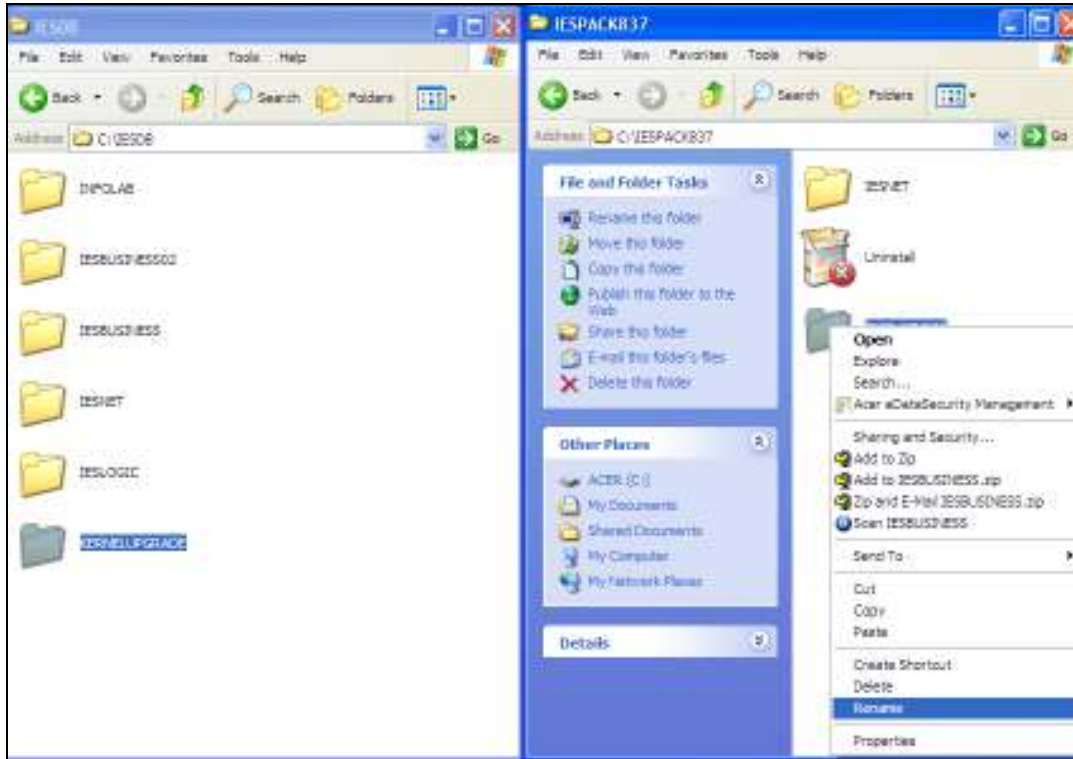
### Slide 21

Slide notes: The Business upgrade is always performed from BUSINESSUPGRADE, so for that, we use the latest version of IESBUSINESS, rename it to BUSINESSUPGRADE and move it into the Database.



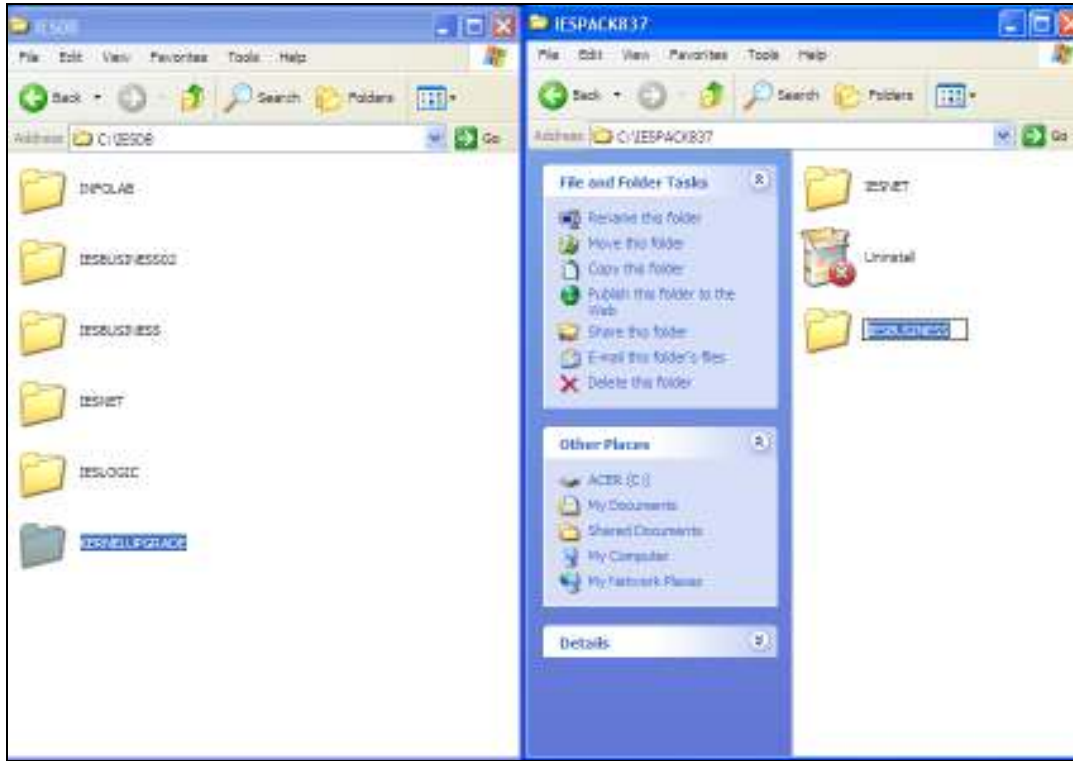
Slide 22

Slide notes:



Slide 23

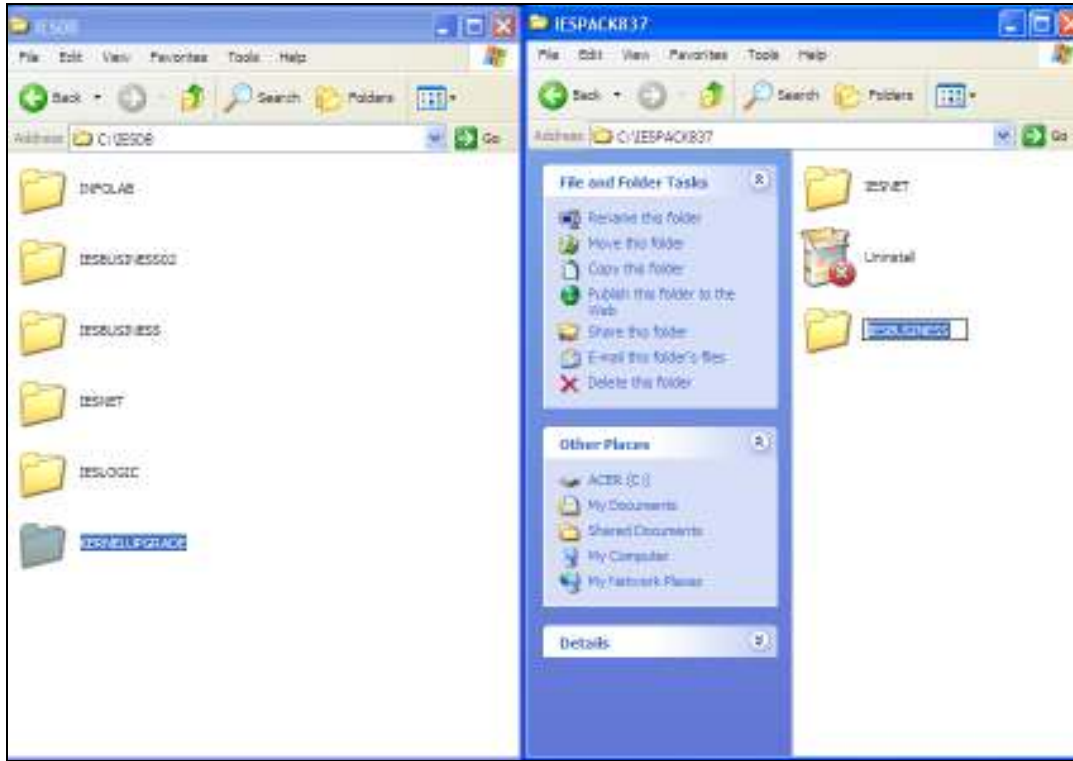
Slide notes:



Slide 24

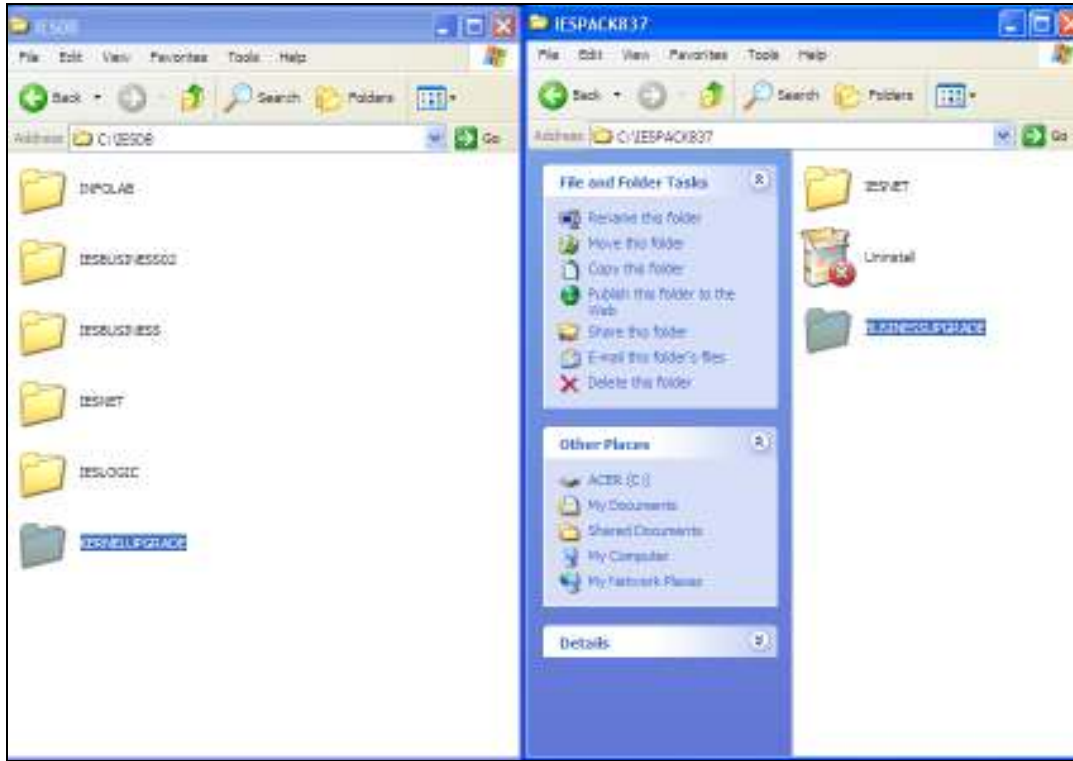
Slide notes:





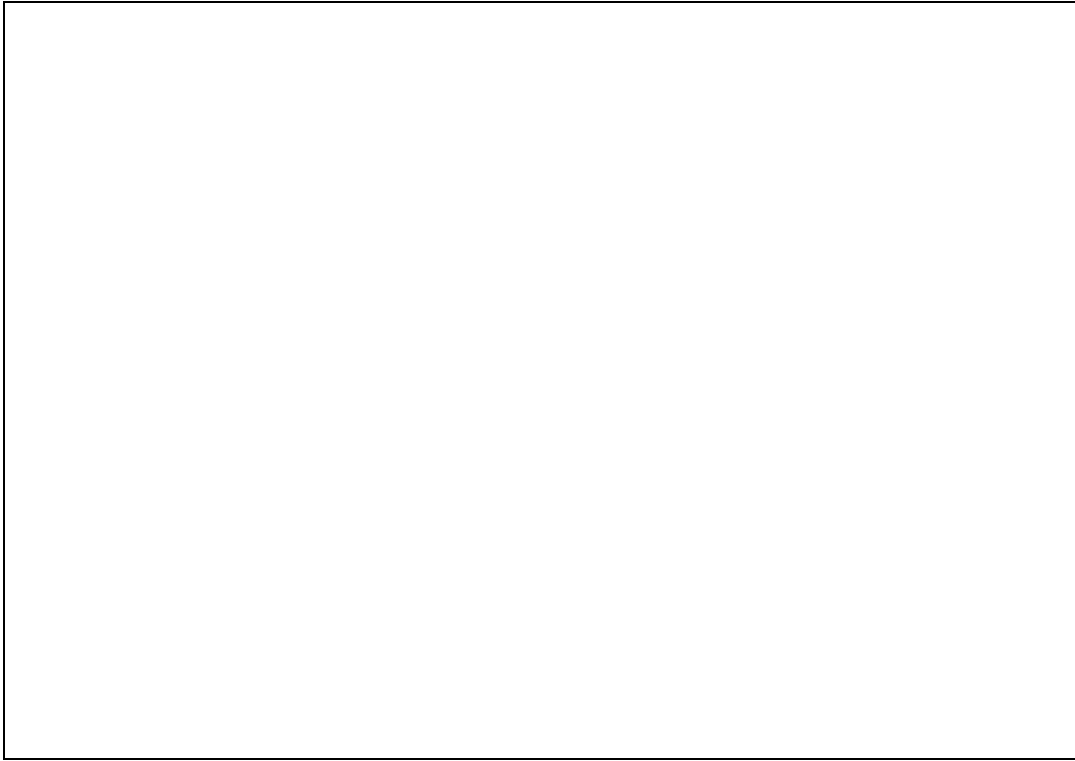
Slide 25

Slide notes:



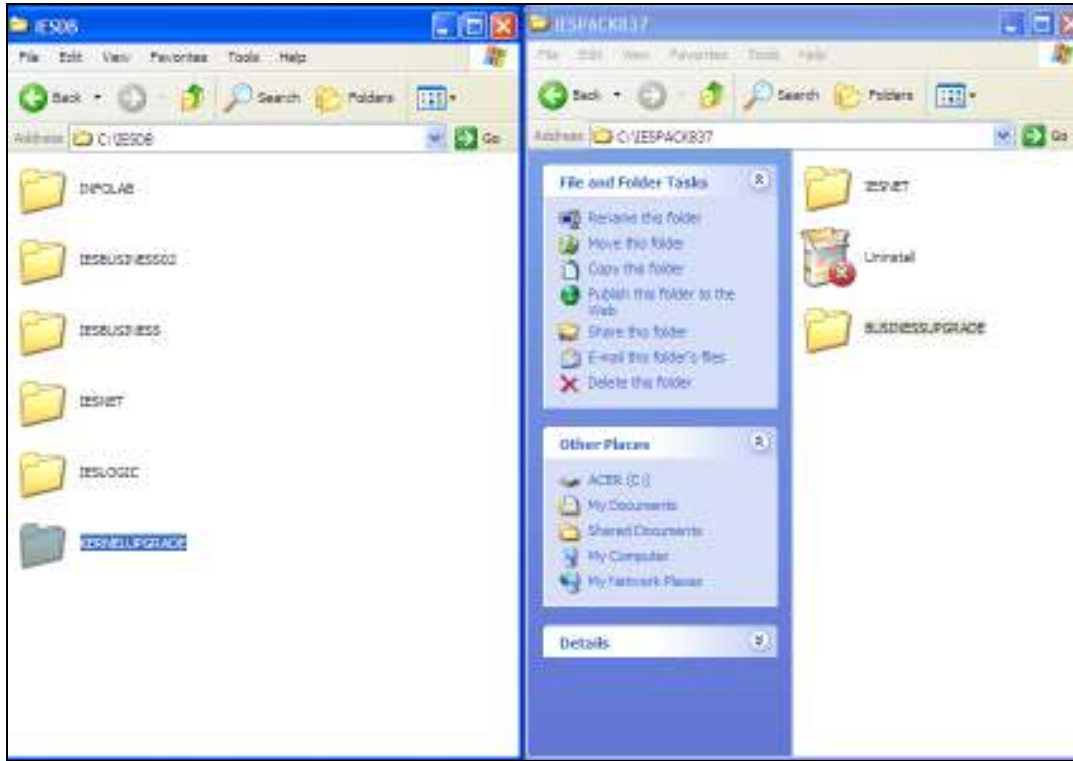
Slide 26

Slide notes:



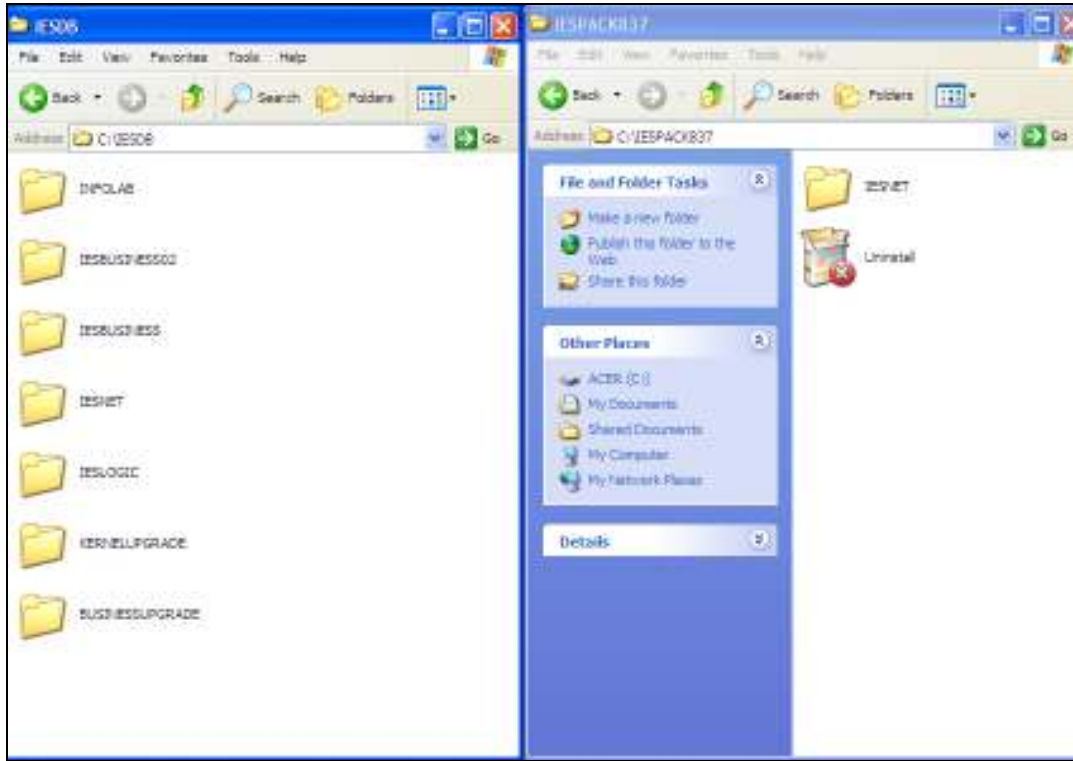
Slide 27

Slide notes:



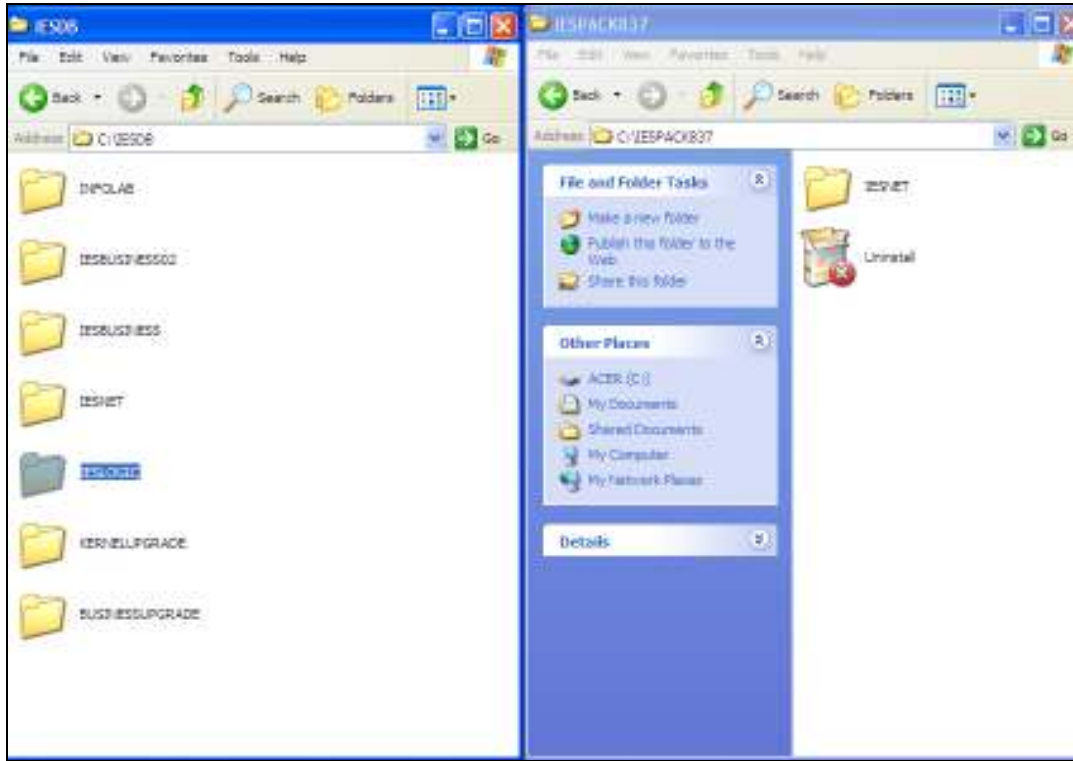
Slide 28

Slide notes:



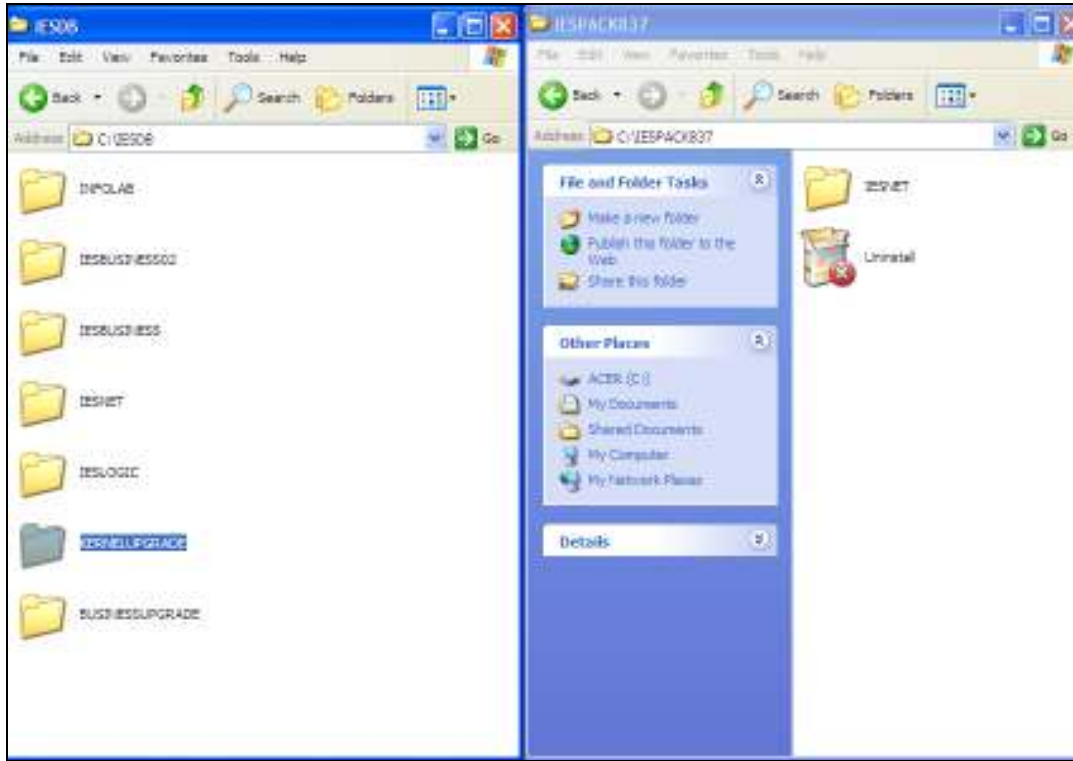
Slide 29

Slide notes:



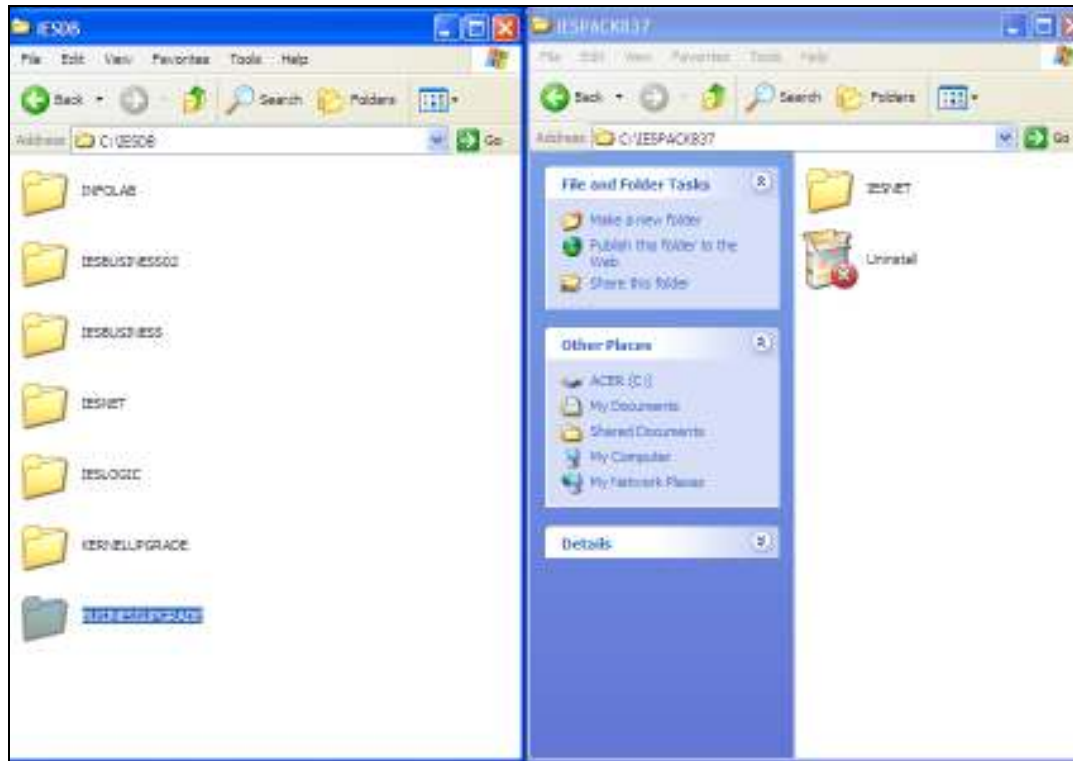
Slide 30

Slide notes:



Slide 31

Slide notes:



Slide 32

Slide notes: Now we have all the necessary Datamarts in place for an IES Server upgrade: IESLOGIC, KERNELUPGRADE and BUSINESSUPGRADE.