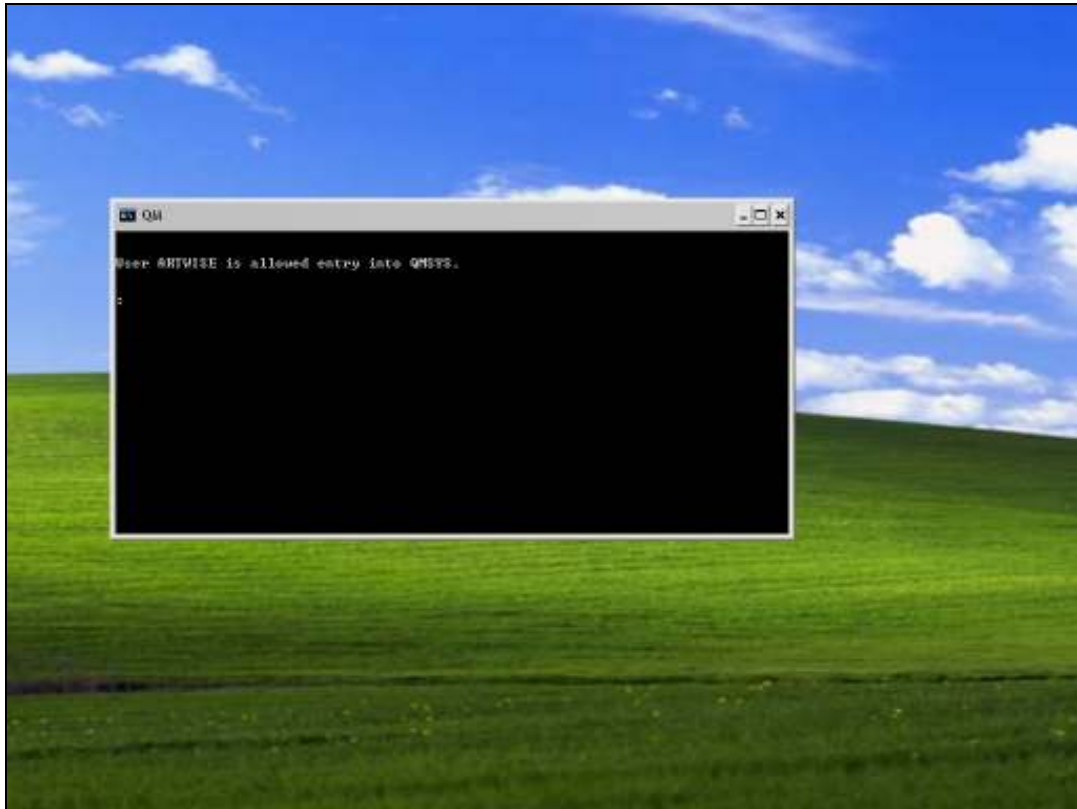




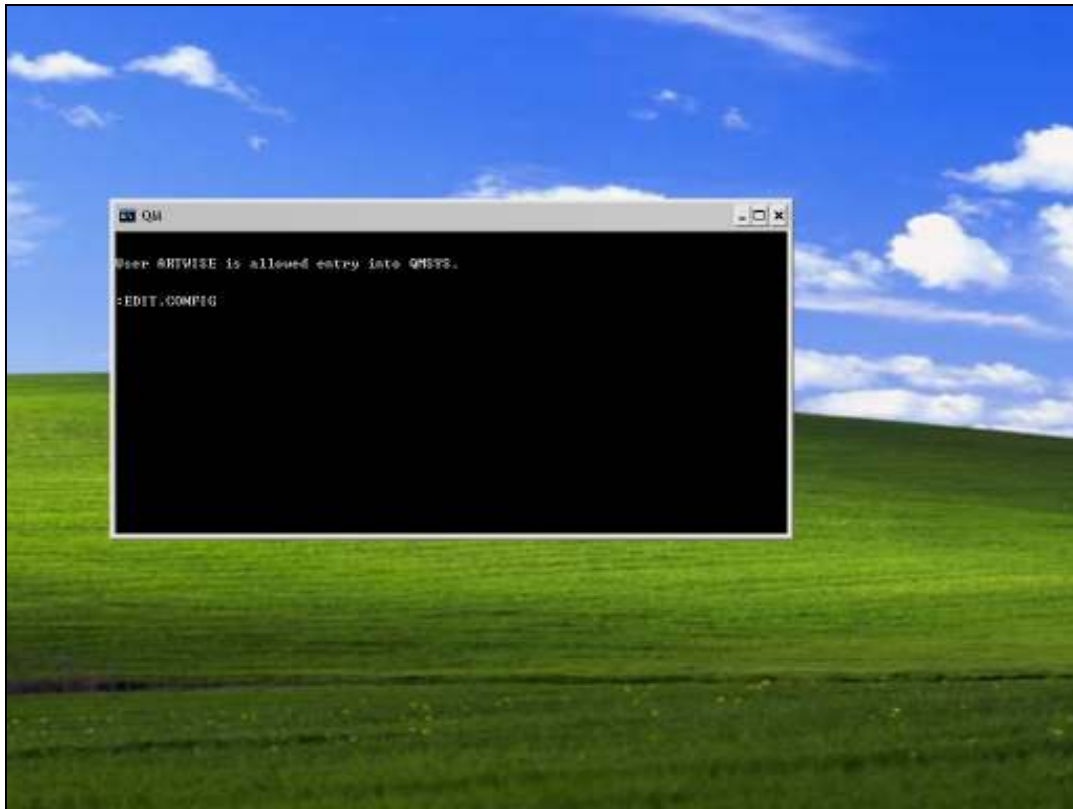
Slide 1

Slide notes: For a new installation, we need to make some changes to the CONFIG file, otherwise IES cannot work properly. We use a Console Session to do this, and we do it in the QMSYS datamart.



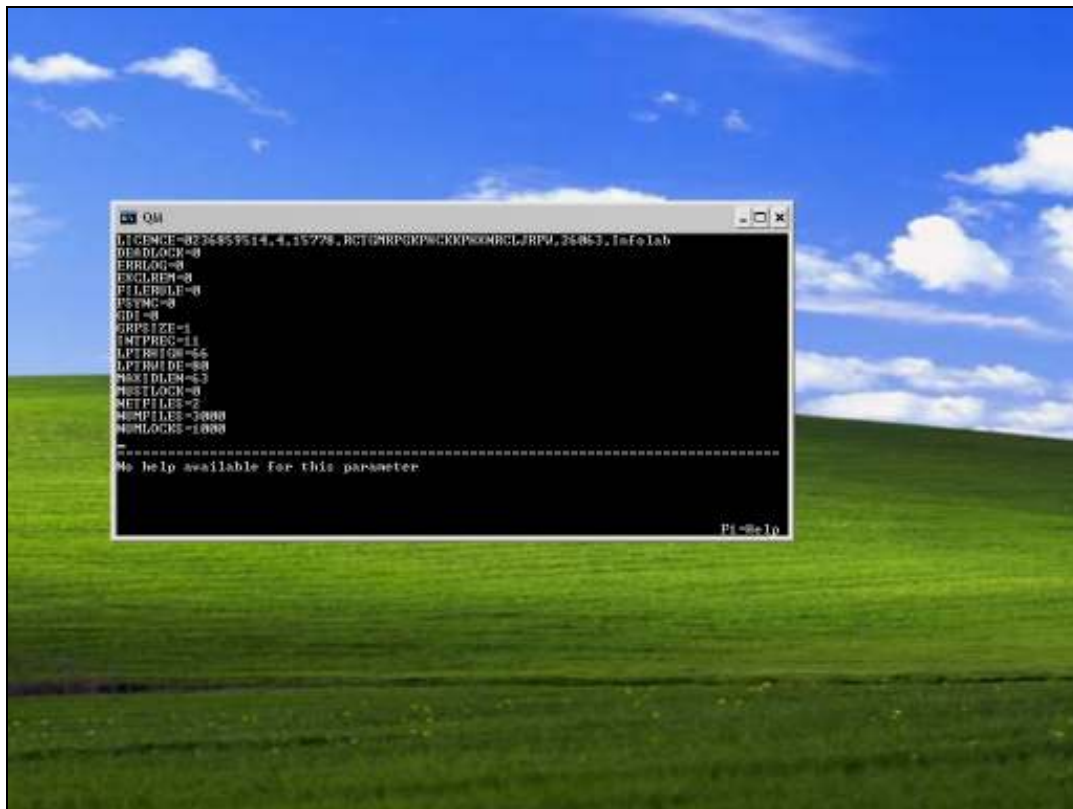
Slide 2

Slide notes: We use the EDIT.CONFIG command.



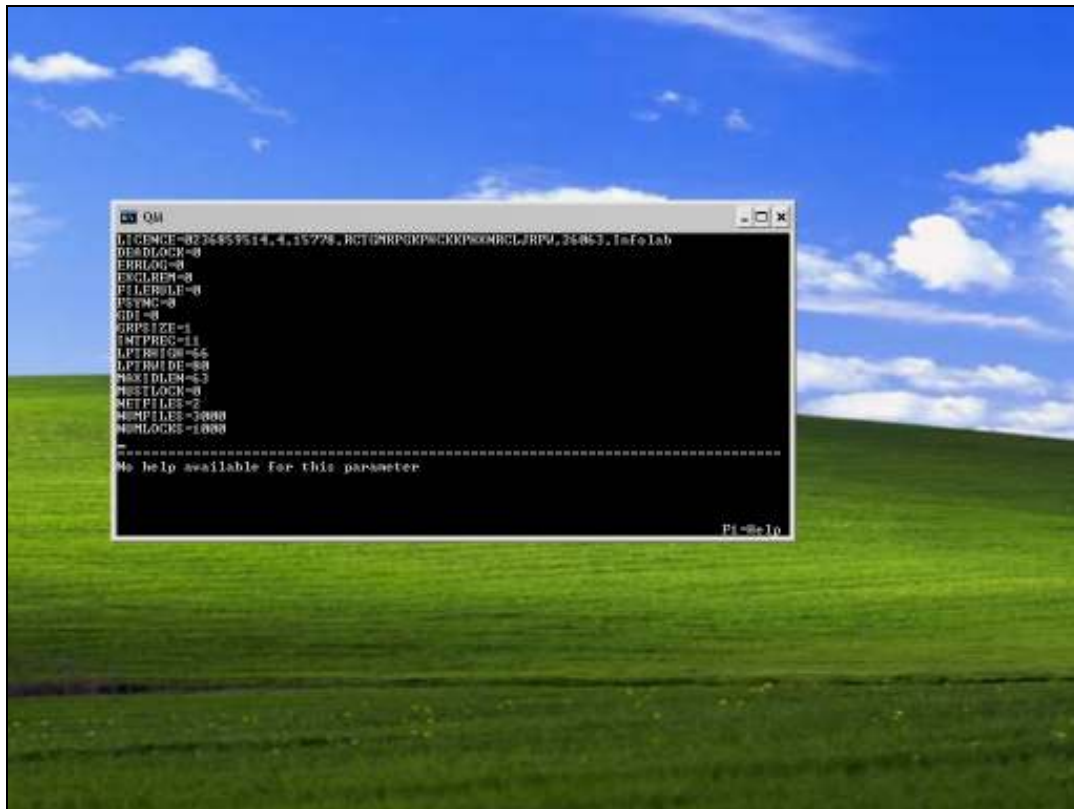
Slide 3

Slide notes: For a new Installation, the CONFIG file may or may not include as many lines as shown here. It does not matter either way, because if the NUMFILES and NUMLOCKS lines are present, then we can just change the values, and if they are not present then we can insert them.



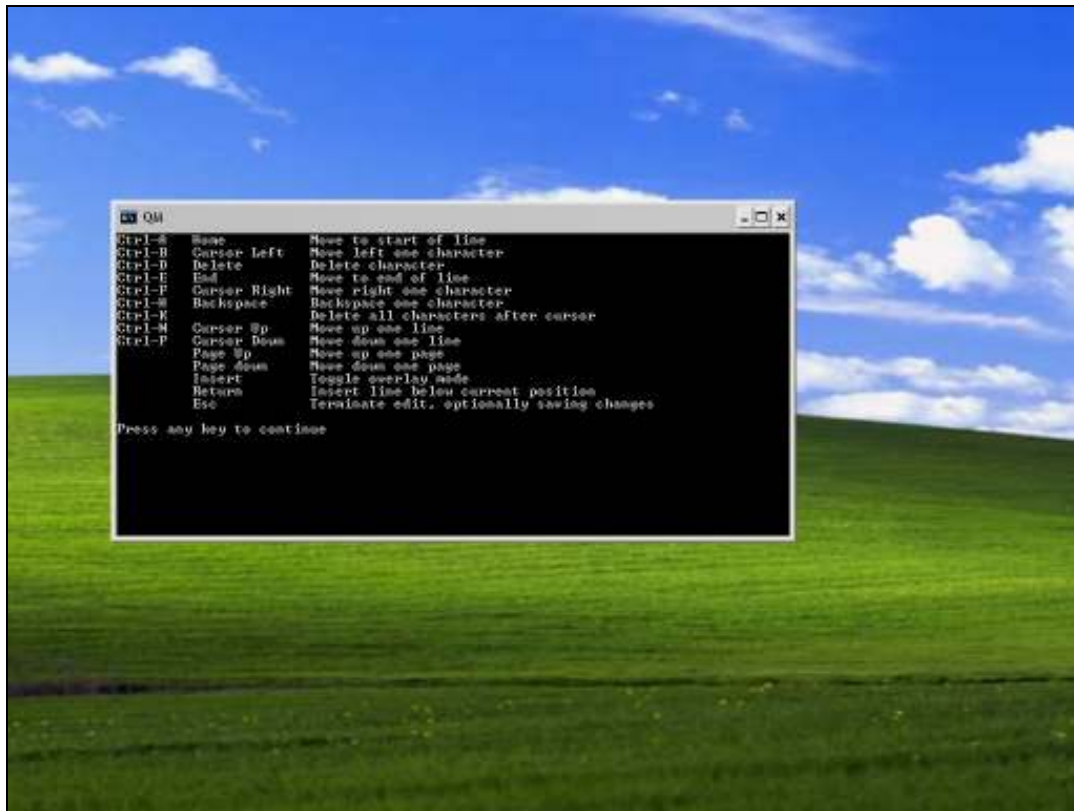
Slide 4

Slide notes: To insert a line, we just press ENTER at the end of a line.



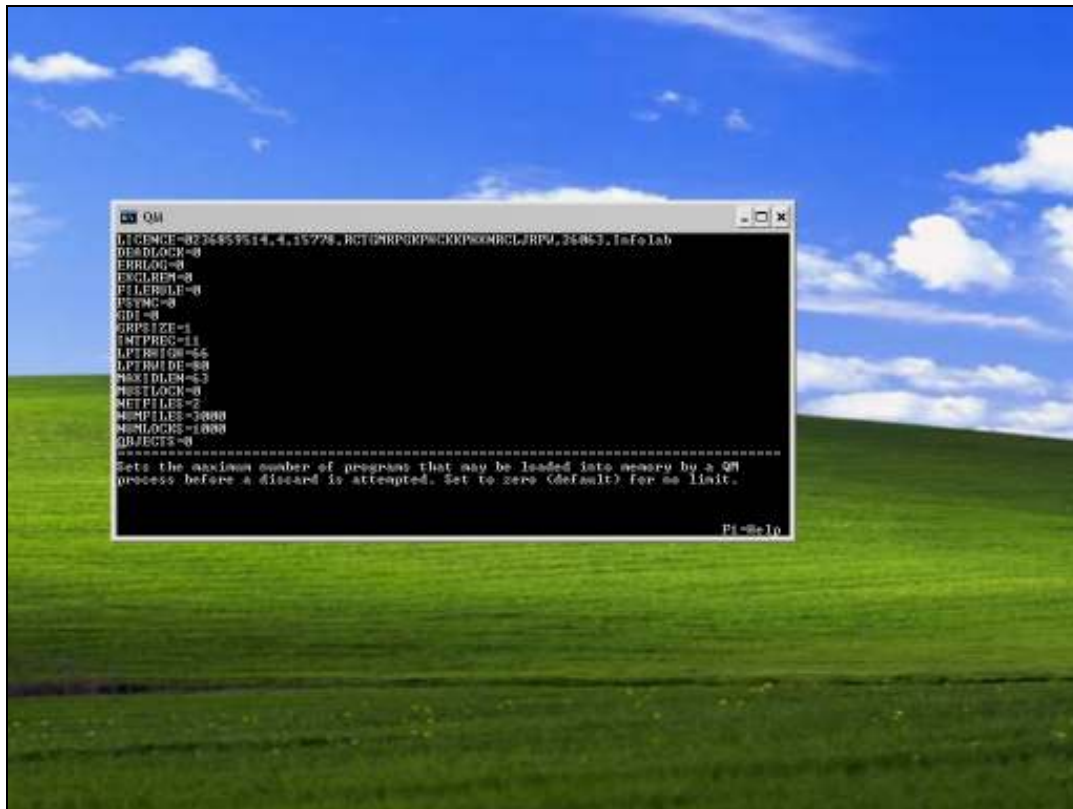
Slide 5

Slide notes: What is required, is that we have a line that states: NUMFILES=3000 and another that states: NUMLOCKS=1000, exactly as shown here.



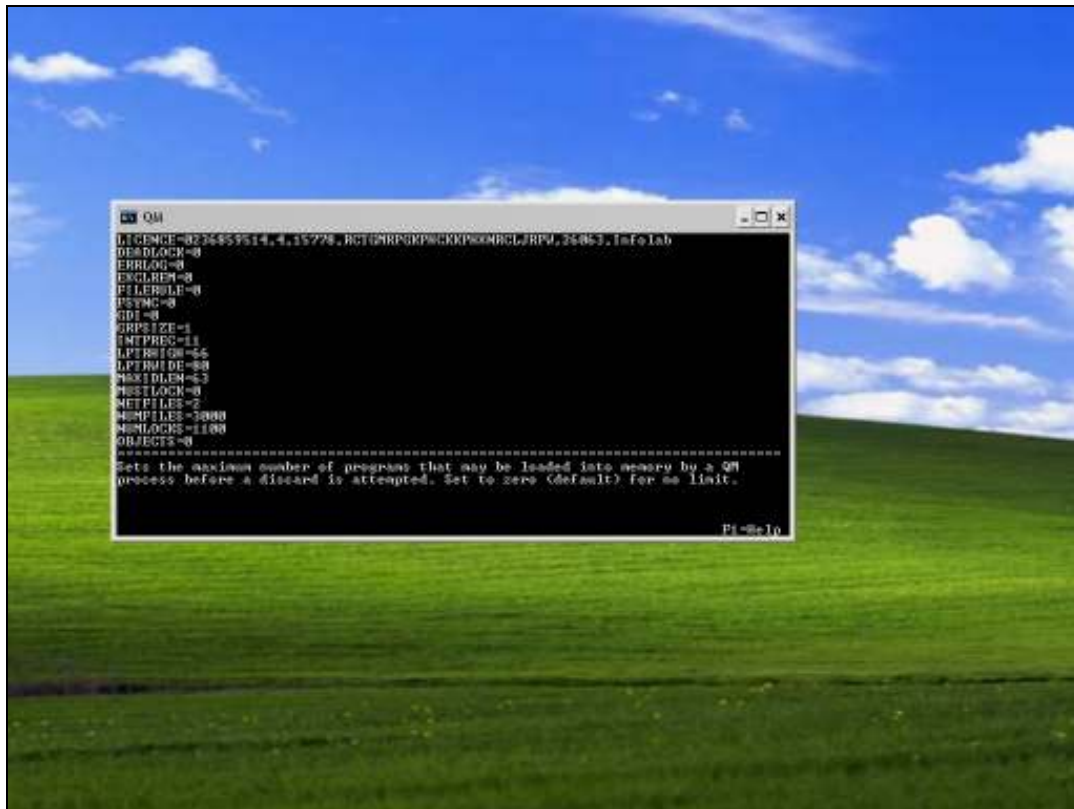
Slide 6

Slide notes: If we press F1, we get this help screen, which explains how to use the arrow keys, how to insert, terminate the edit, etc. It is easy to use.



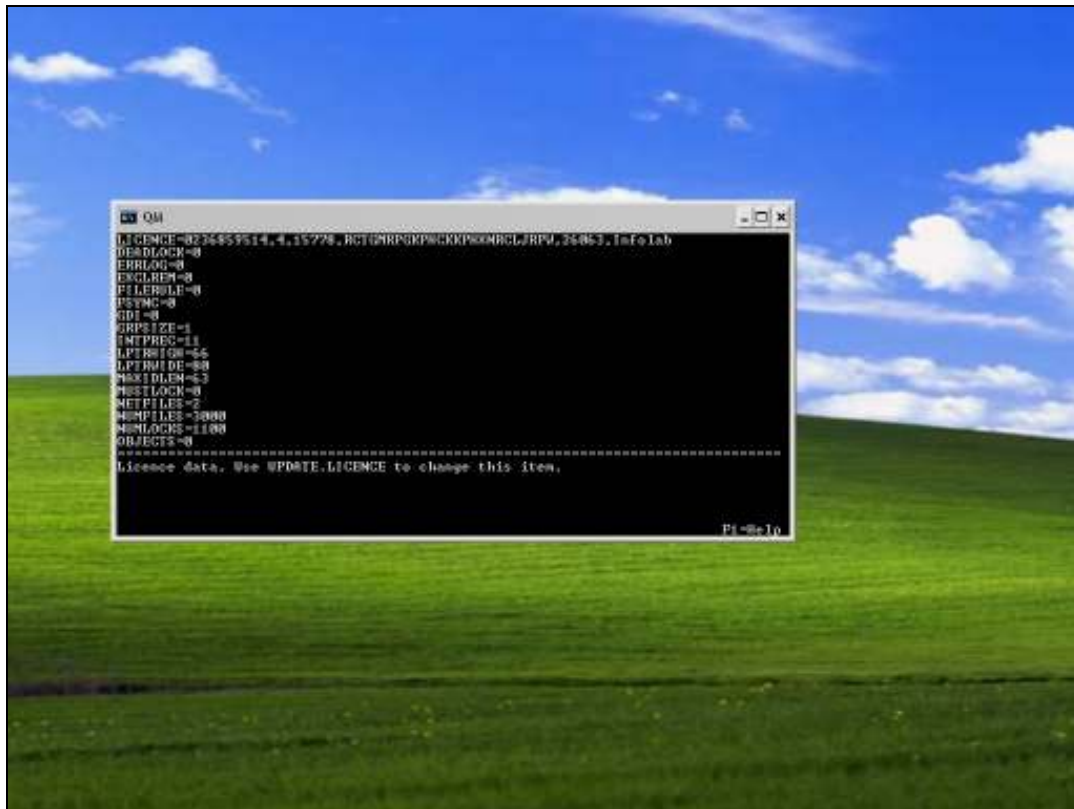
Slide 7

Slide notes:



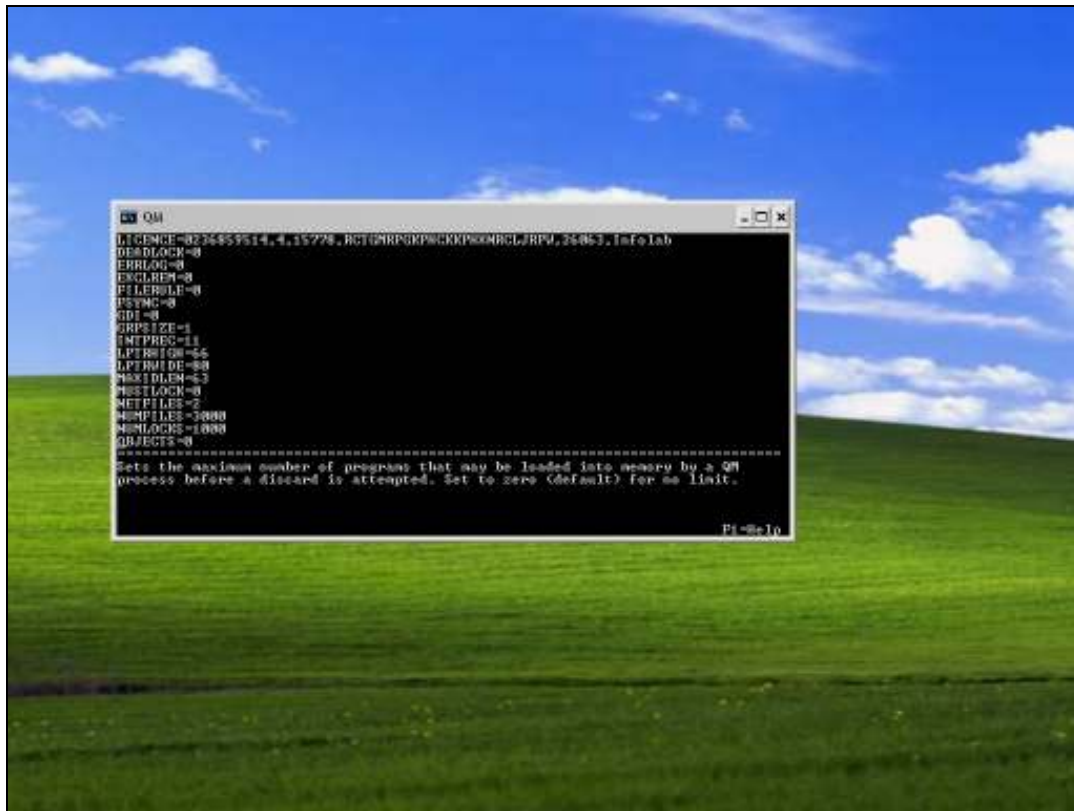
Slide 8

Slide notes:



Slide 9

Slide notes:



Slide 10

Slide notes: After making these changes, it is necessary to stop and start the QM Service for the changes to take effect.



Slide 11

Slide notes: