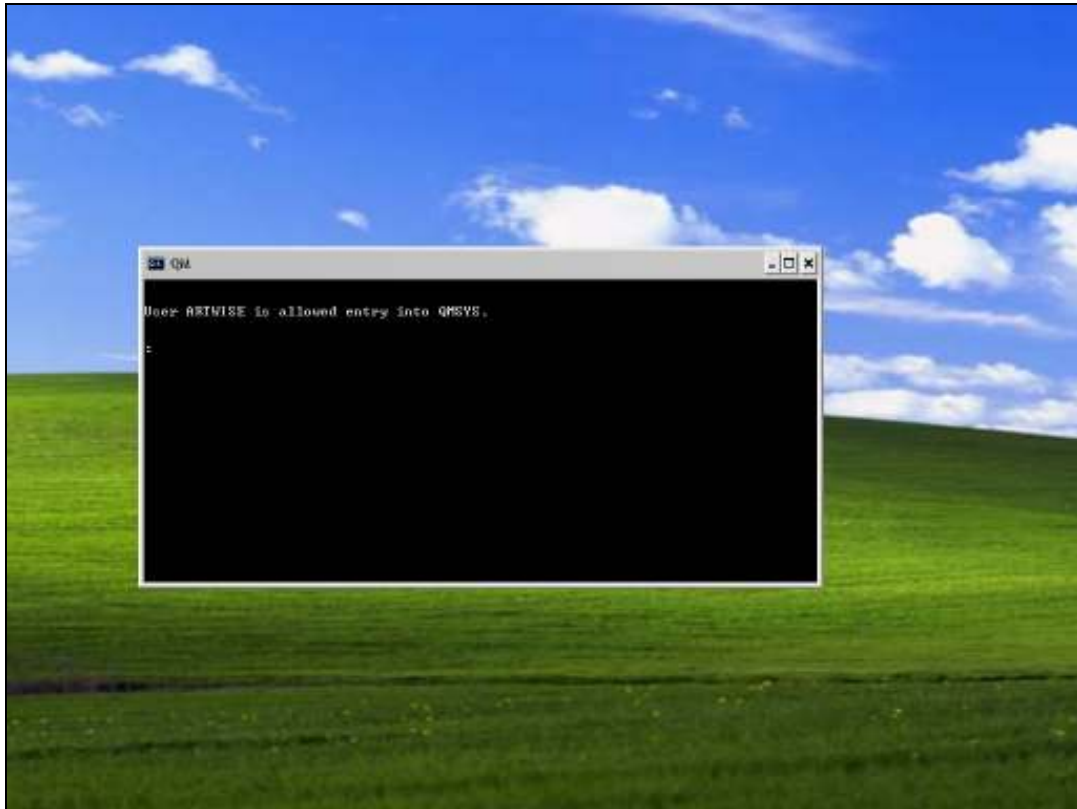


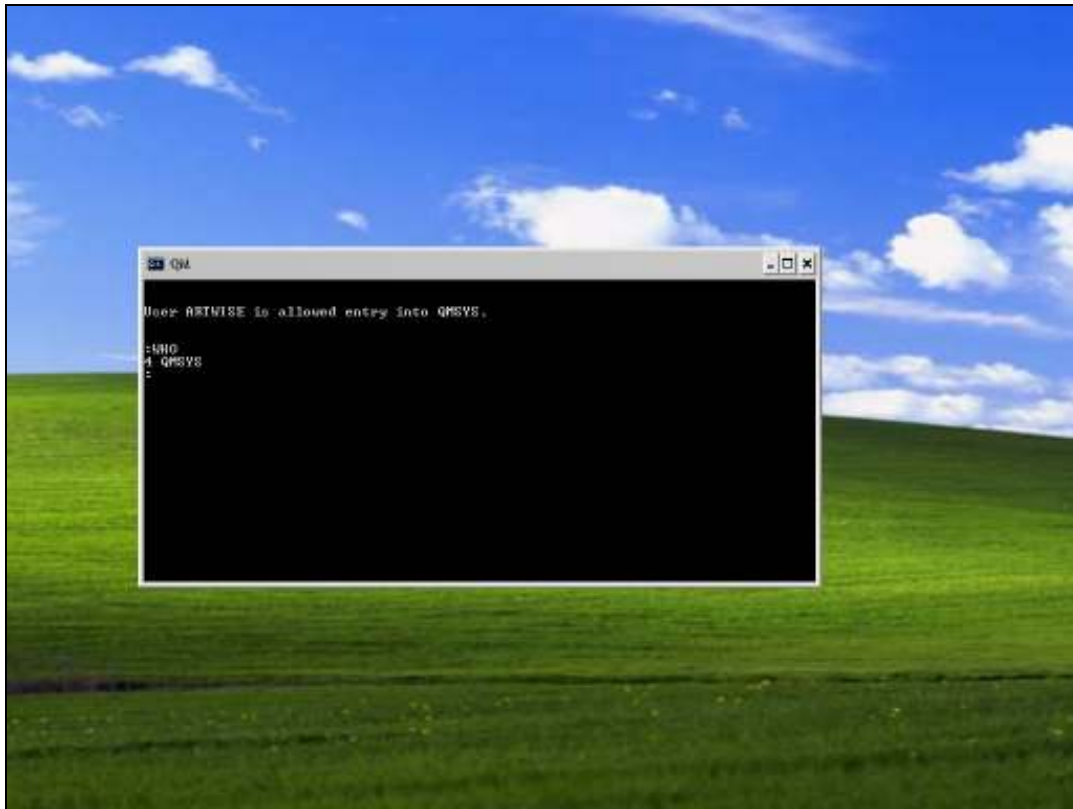
## Slide 1

Slide notes: To make a new User for "ieslogin" in QMSYS, we use a Console Session, and we have to do it in the QMSYS Account. The "ieslogin" User is necessary when we choose to upstep our security for logons, and in this case "ieslogin" will replace the "infolabc" logon User.



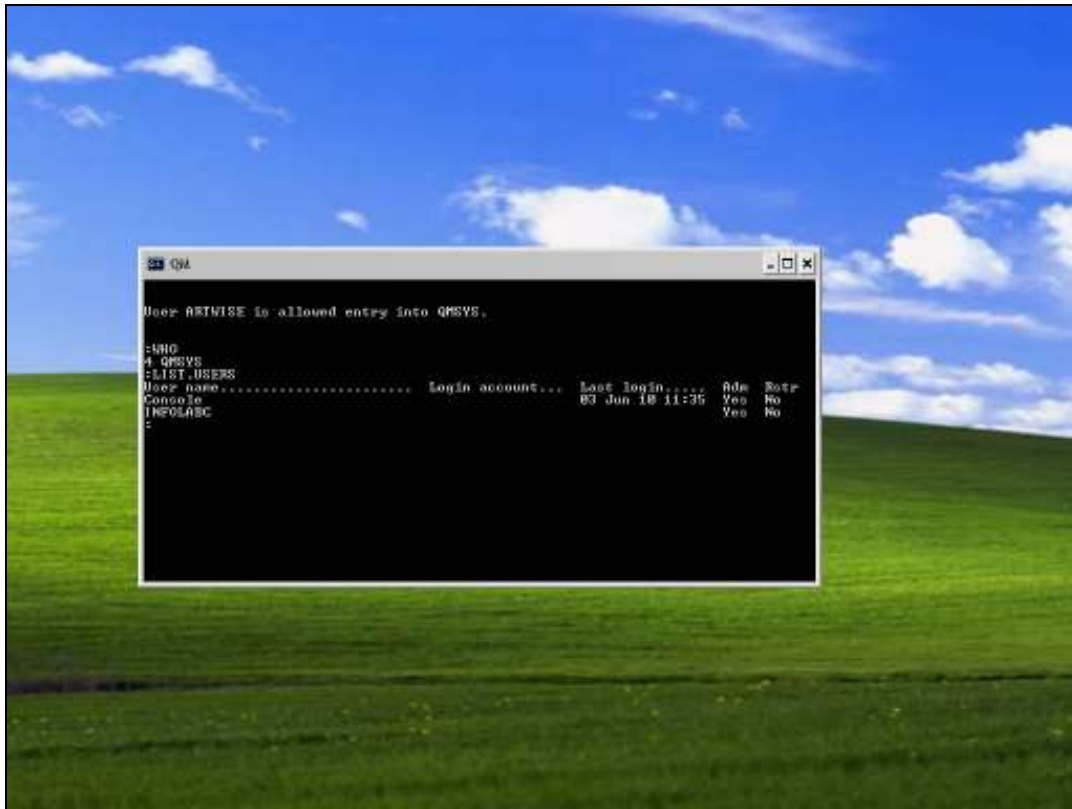
Slide 2

Slide notes: The WHO command will confirm whether we are in QMSYS.



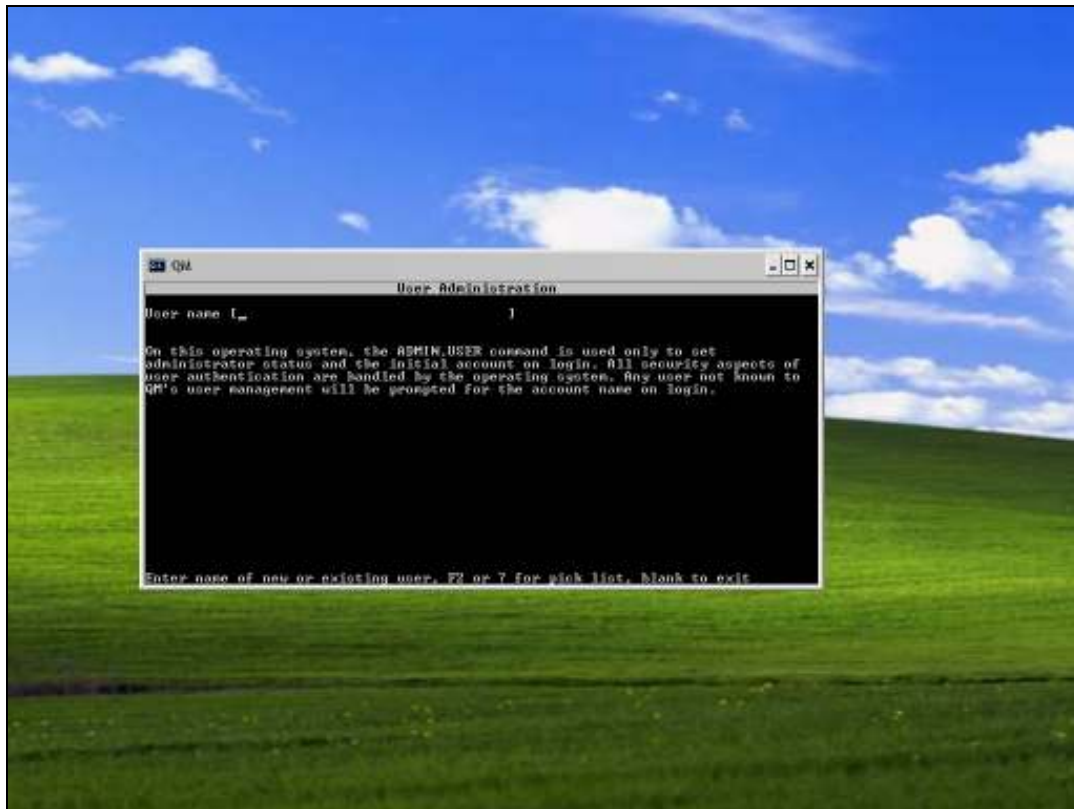
Slide 3

Slide notes: And LIST.USERS will reveal the current User Codes in the database.



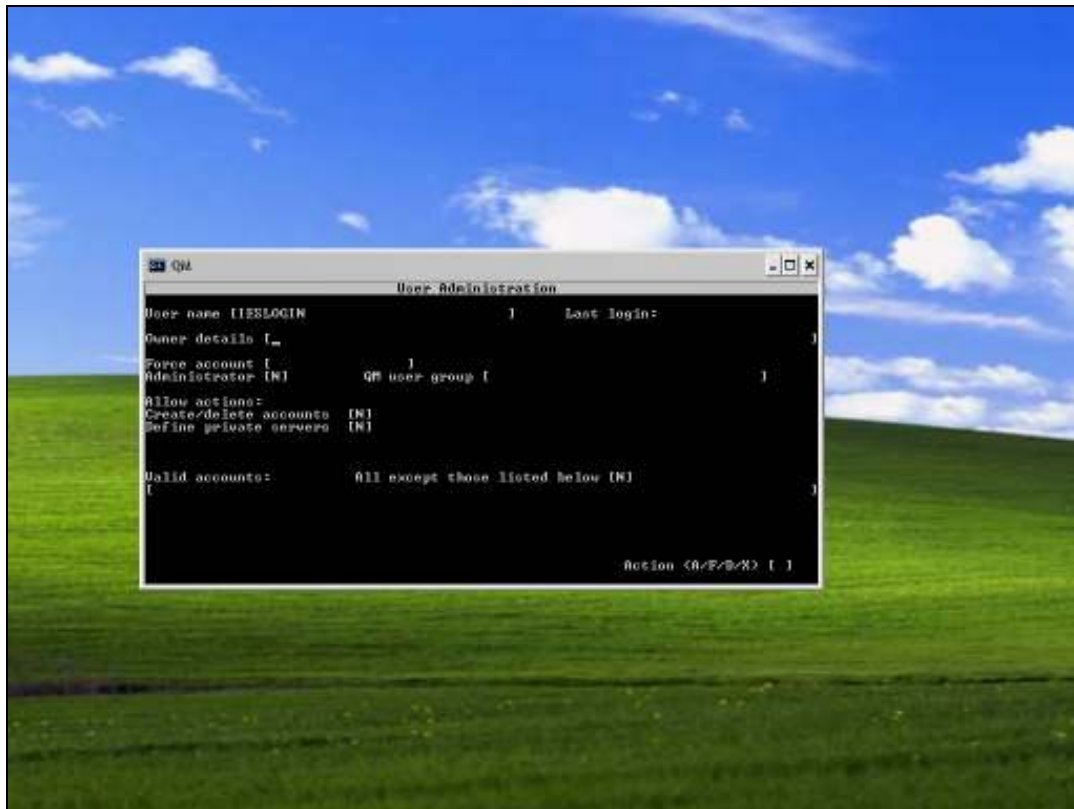
Slide 4

Slide notes: We use ADMIN.USER to make a new User in the QM database.



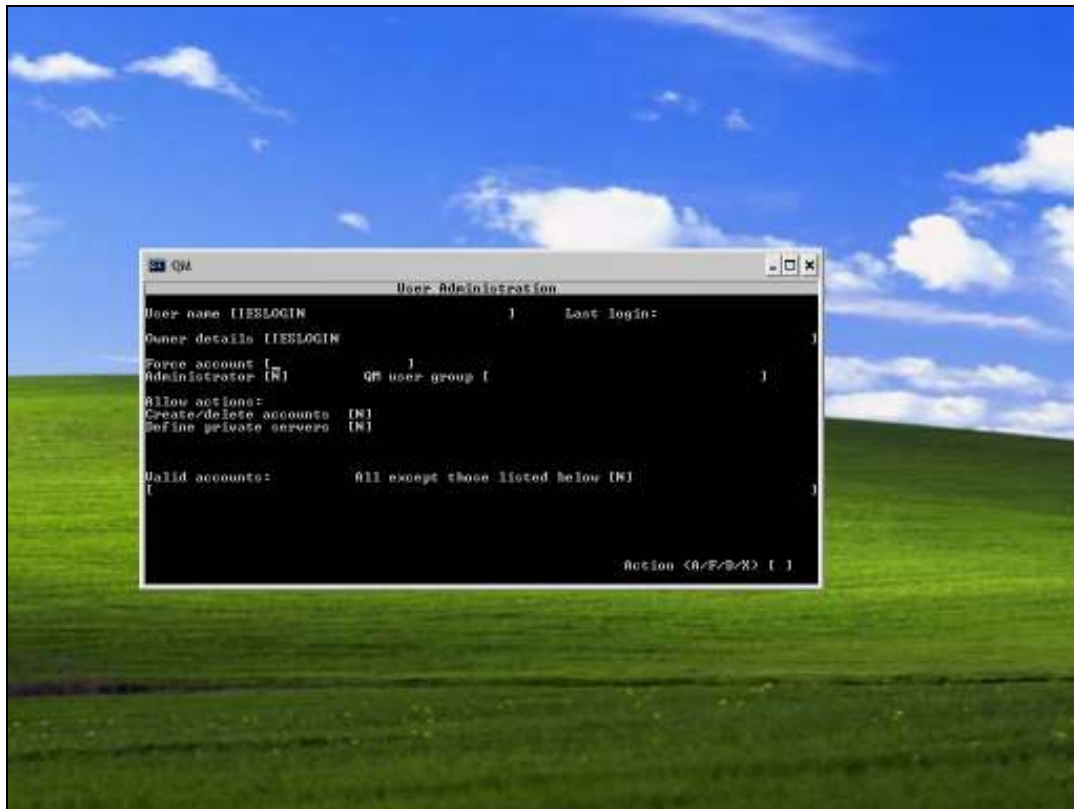
Slide 5

Slide notes: The User Code is IESLOGIN.



Slide 6

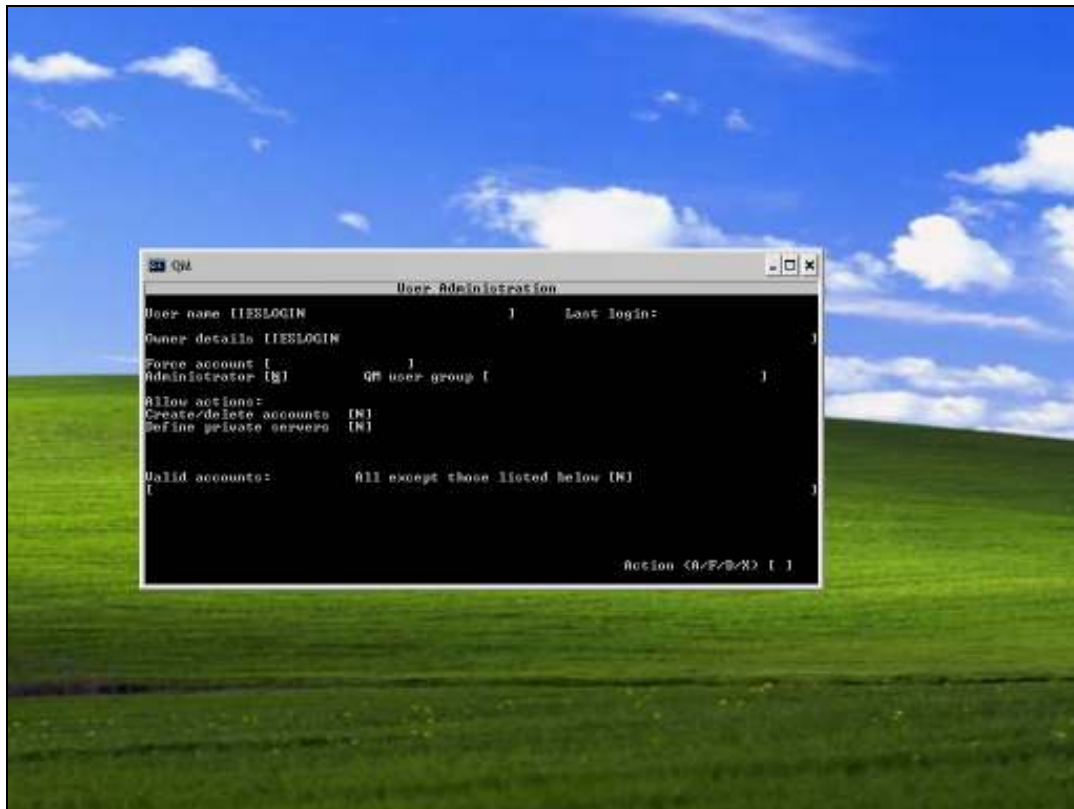
Slide notes: The Owner is also IESLOGIN.



Slide 7

Slide notes: Force Account is NULL.





Slide 8

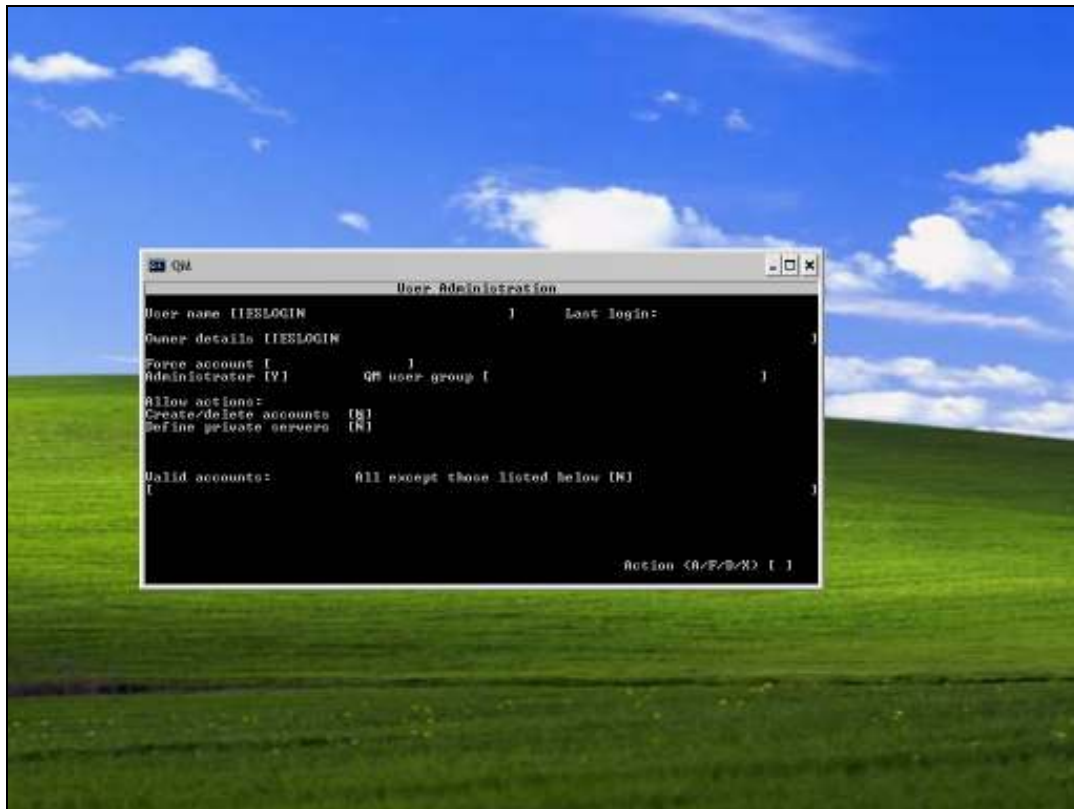
Slide notes: Administrator is "Y".





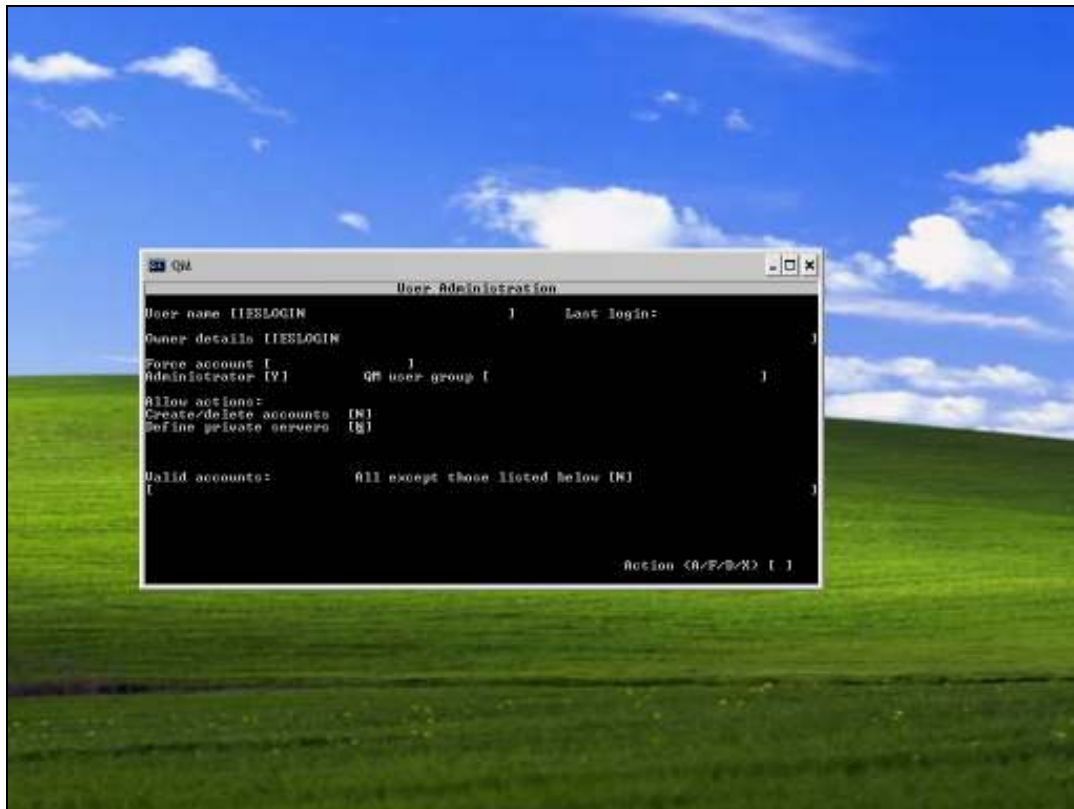
Slide 9

Slide notes: User Group is NULL, and from here we can just press ENTER until we get to the end.



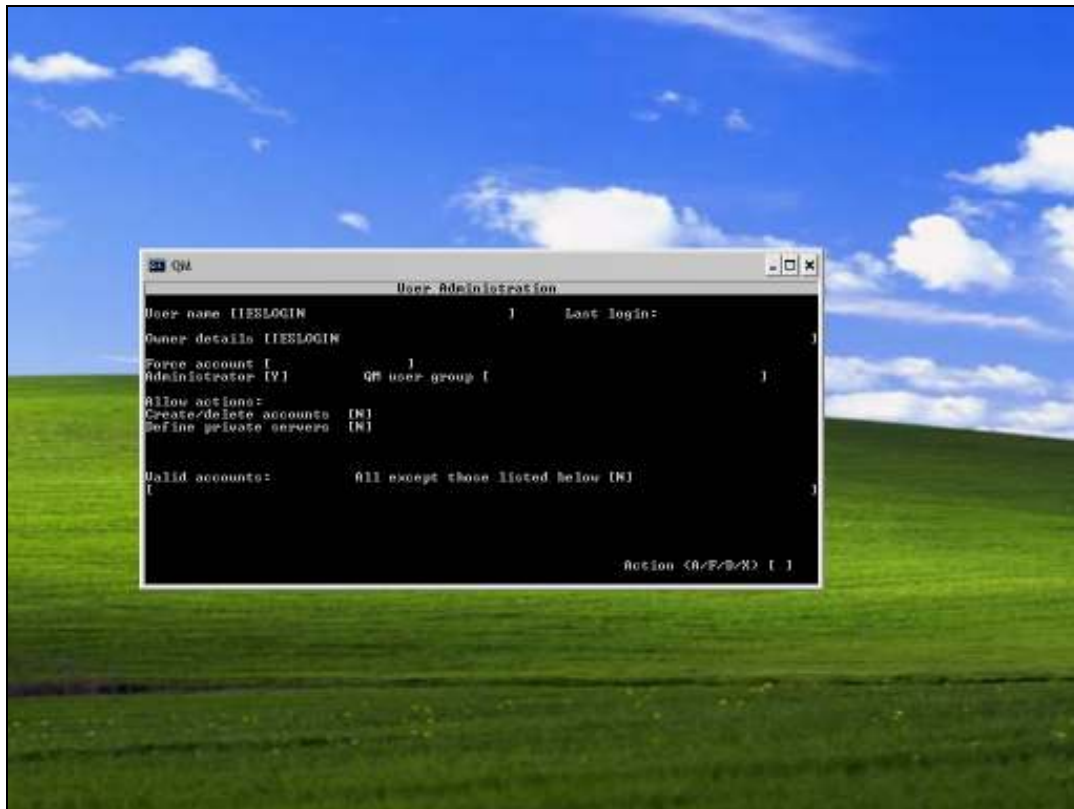
Slide 10

Slide notes:



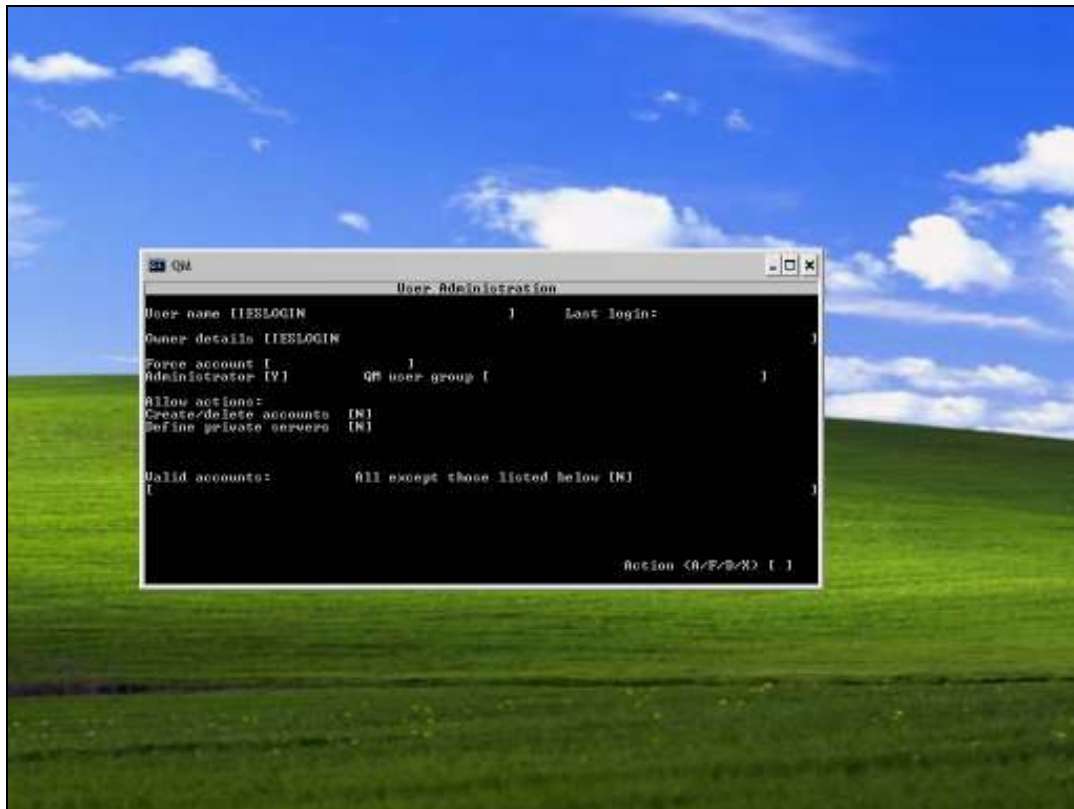
Slide 11

Slide notes:



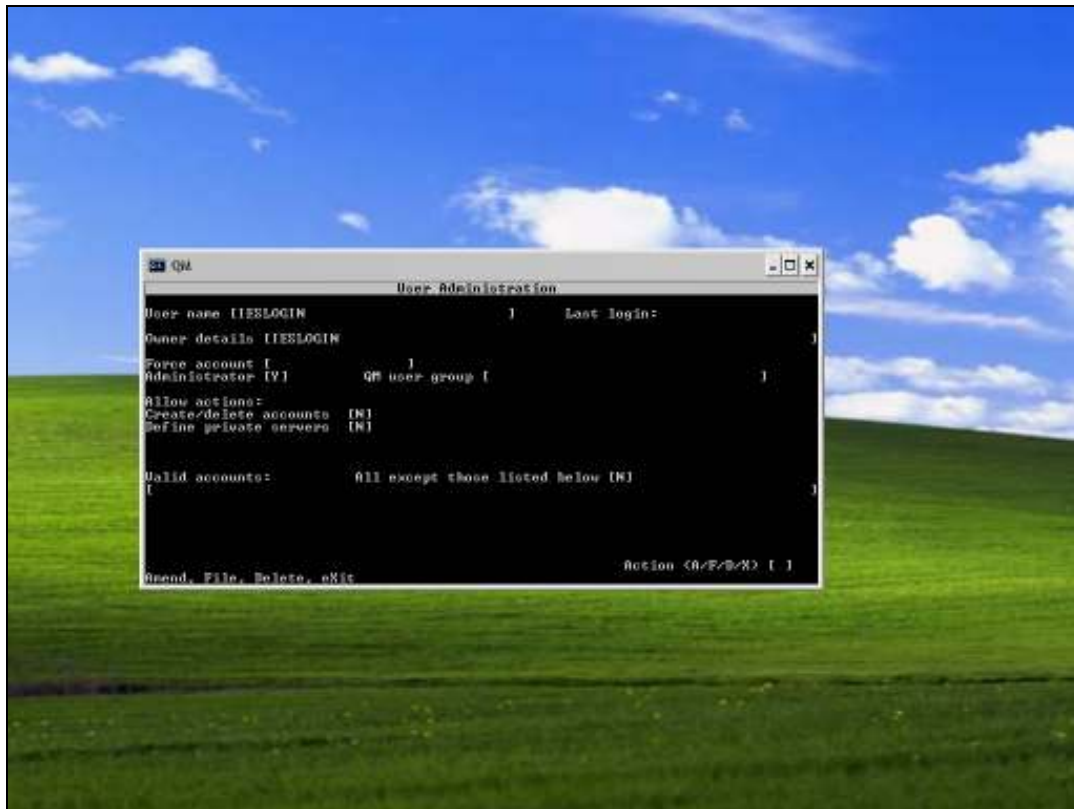
Slide 12

Slide notes:



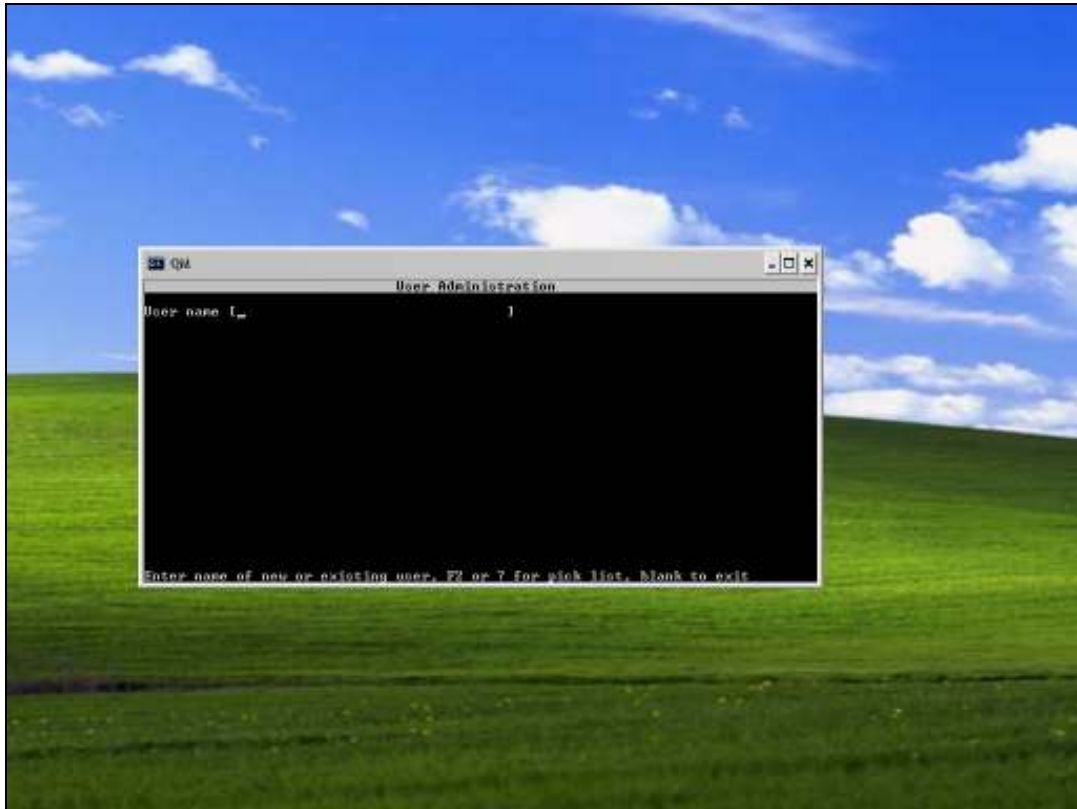
Slide 13

Slide notes:



Slide 14

Slide notes: We use "F" to file the item.



Slide 15

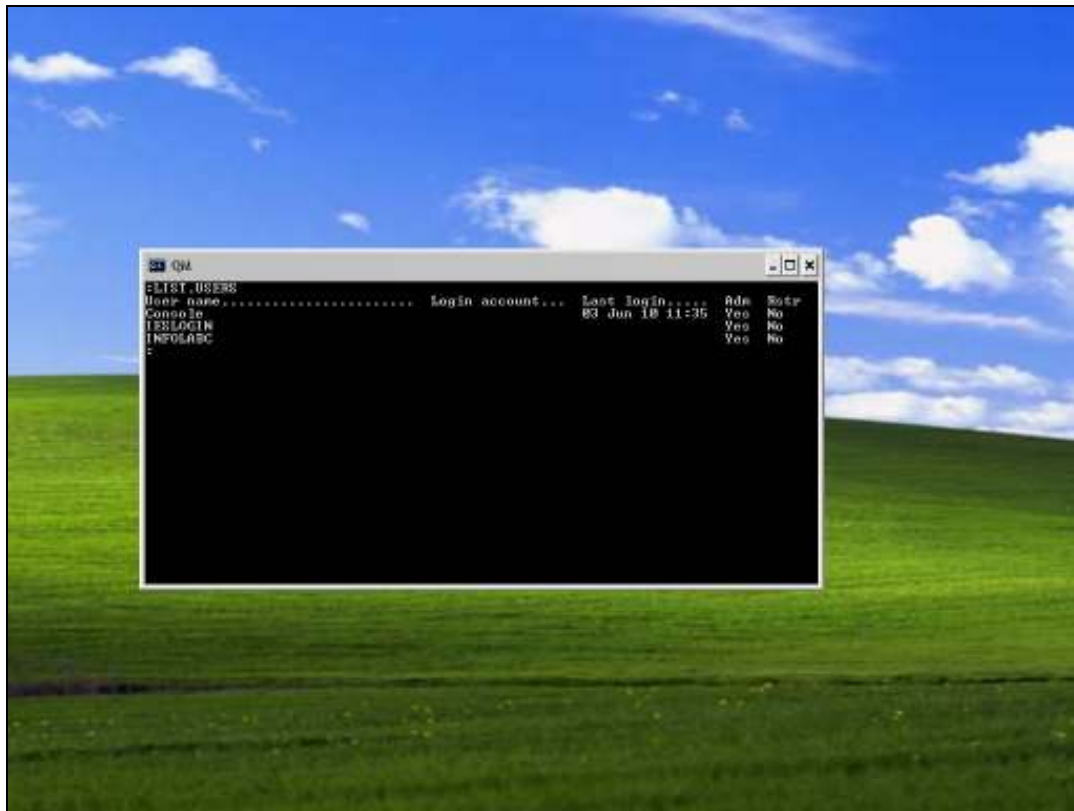
Slide notes: And press ENTER to exit.





Slide 16

Slide notes:



Slide 17

Slide notes: The LIST.USERS command will reveal that the new User Code is in place.



Slide 18

Slide notes: