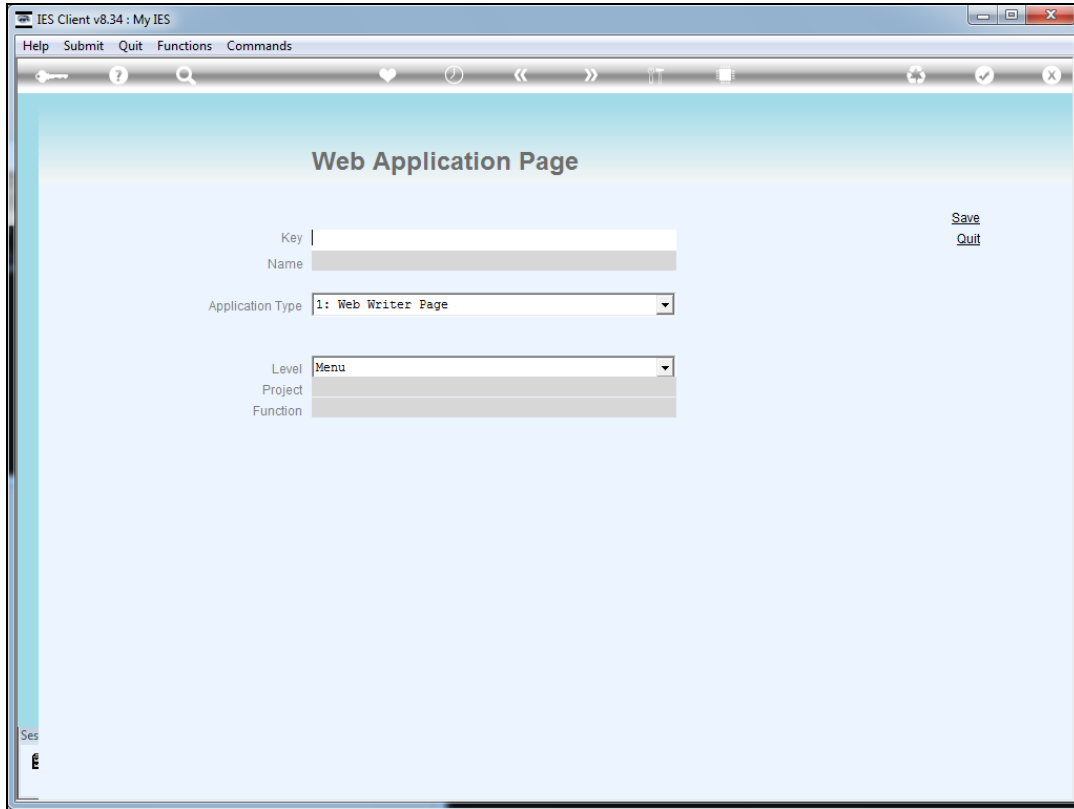


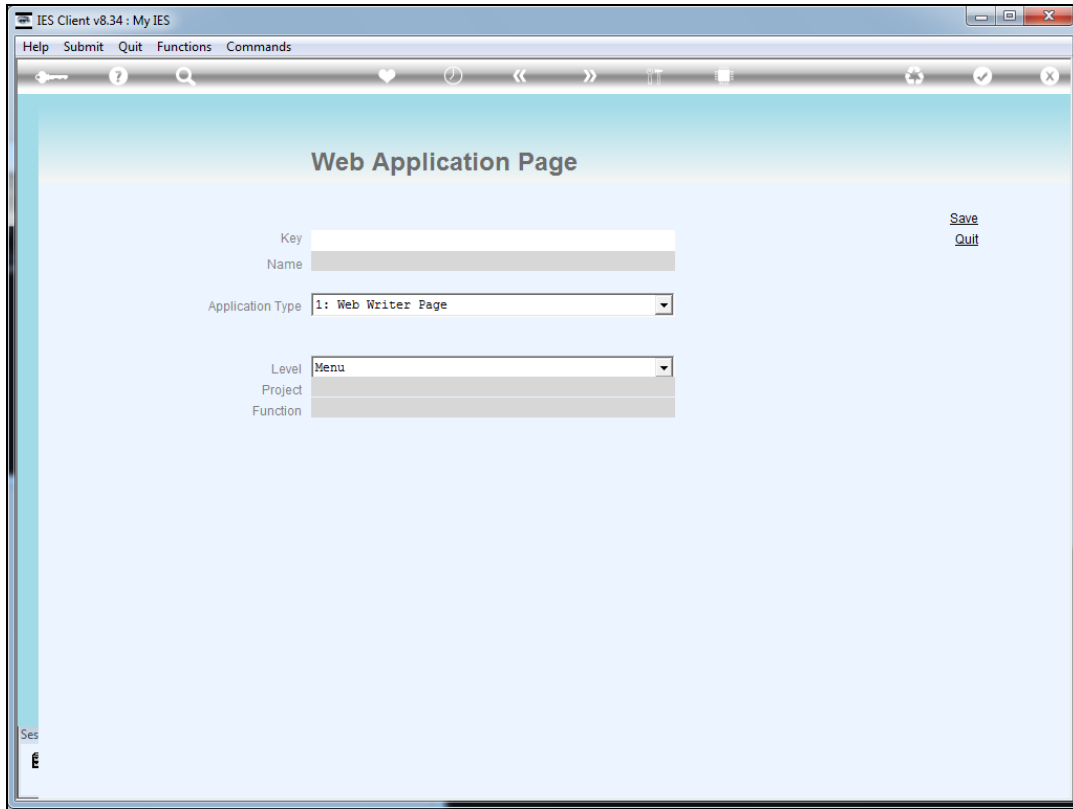
Slide 1

Slide notes: Any and all Pages that we wish to process at iesMobile must be registered as Web Applications, and there can be similar and different pages in the various datamarts.

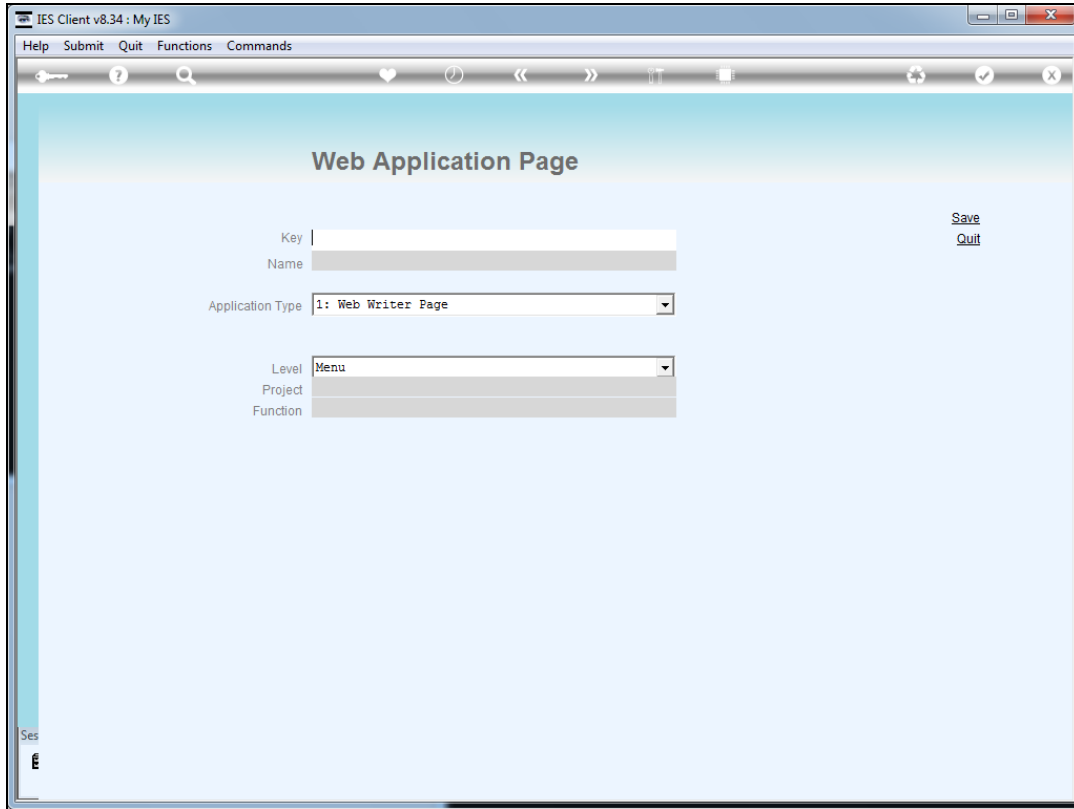


Slide 2

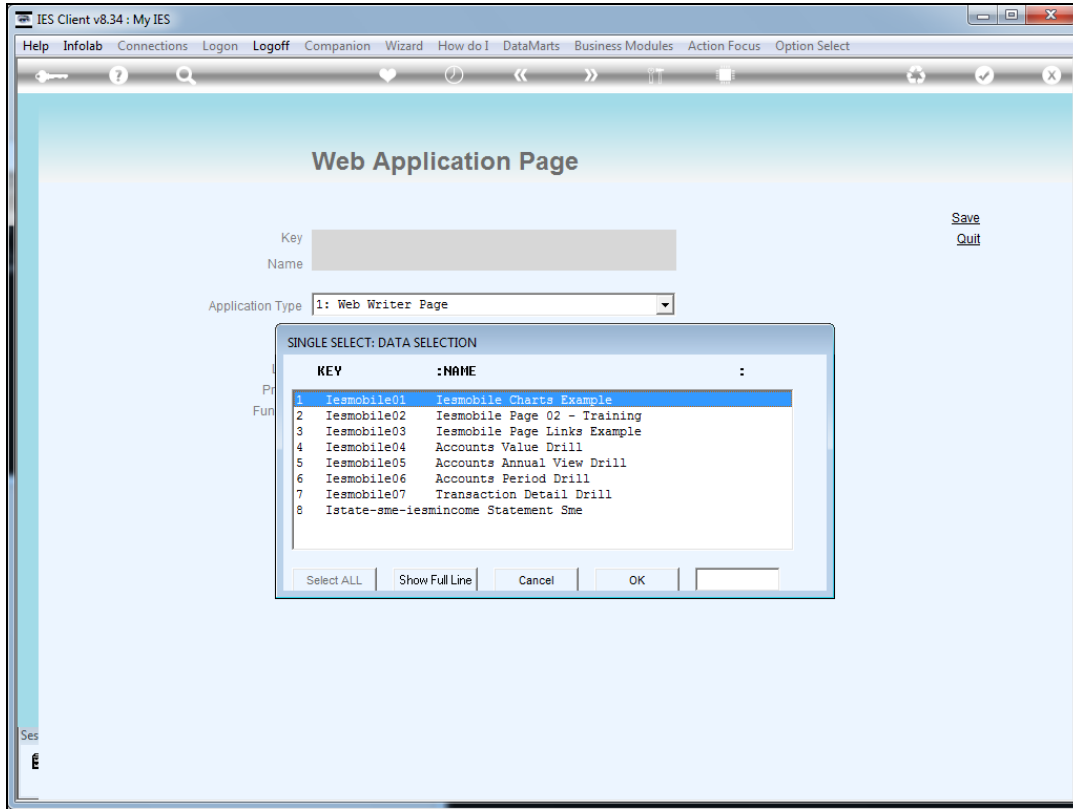
Slide notes: The Key for any Web Application should already exist at Web Writer. In other words, the page must already exist as a Web Writer page before it can be registered for use as a Web Application Page.



Slide 3
Slide notes:

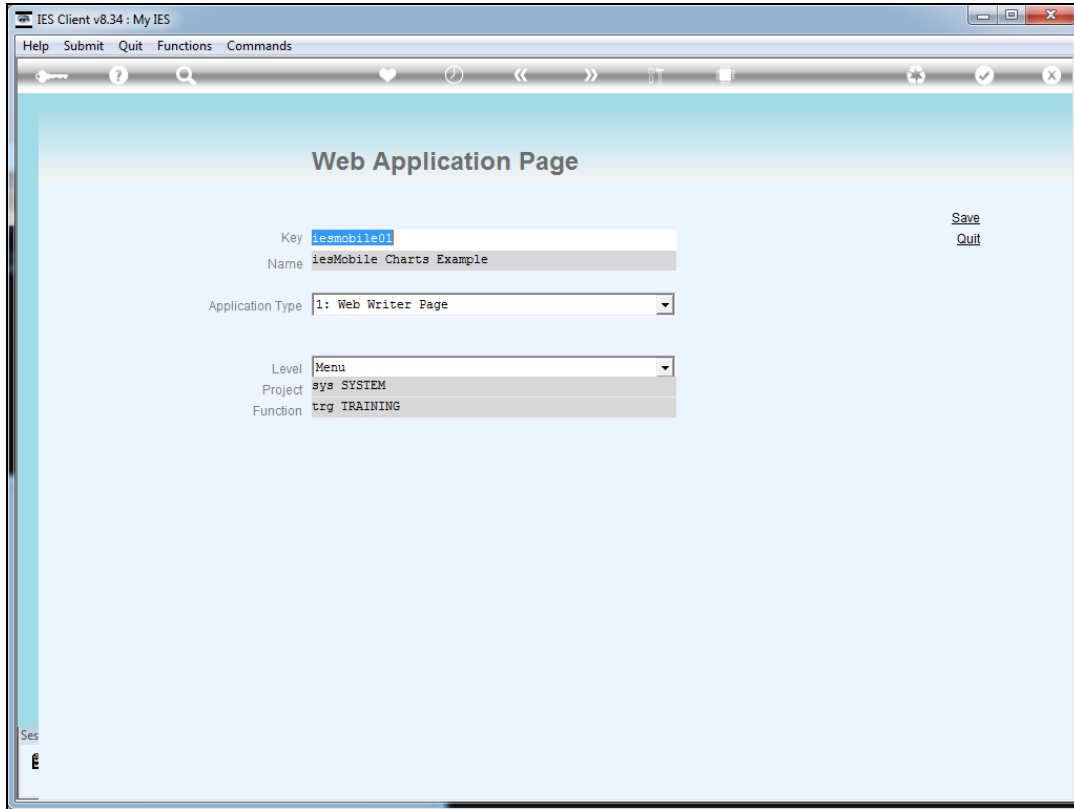


Slide 4
Slide notes:



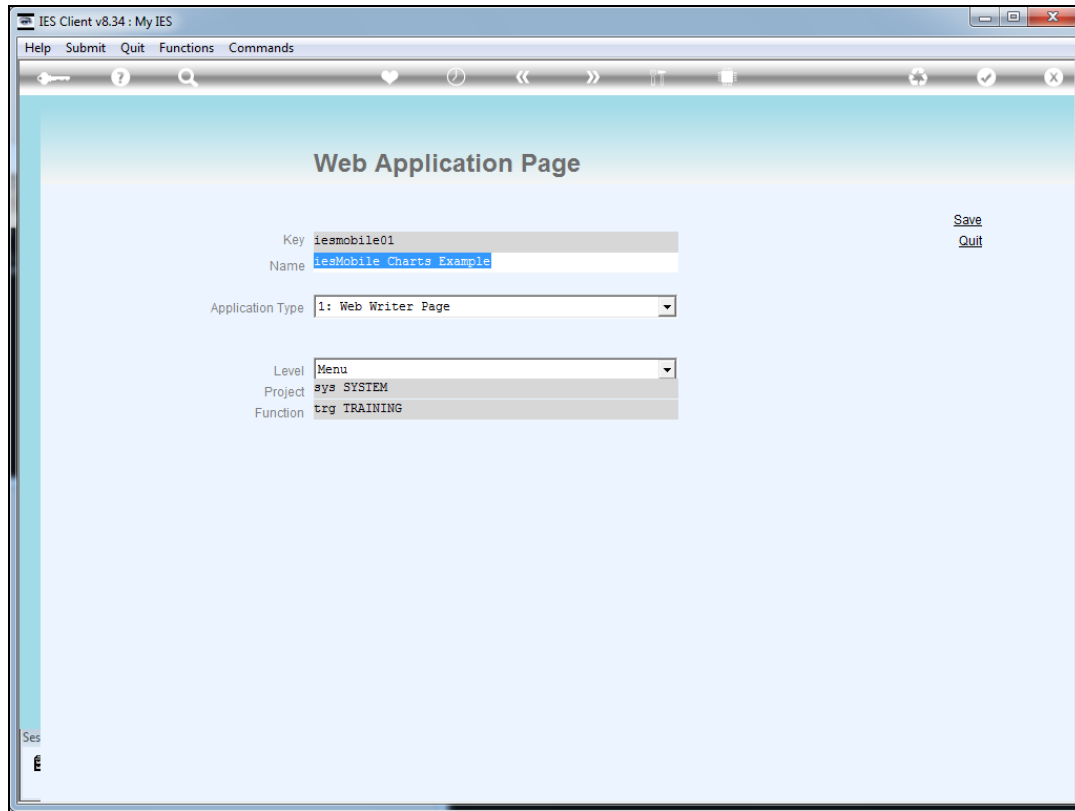
Slide 5

Slide notes: The lookup will reveal pages that are already registered, and not all pages that exist at Web Writer. If we want to register a new Web Application Page, then we may first lookup the key at Web Writer, and then paste it in here.



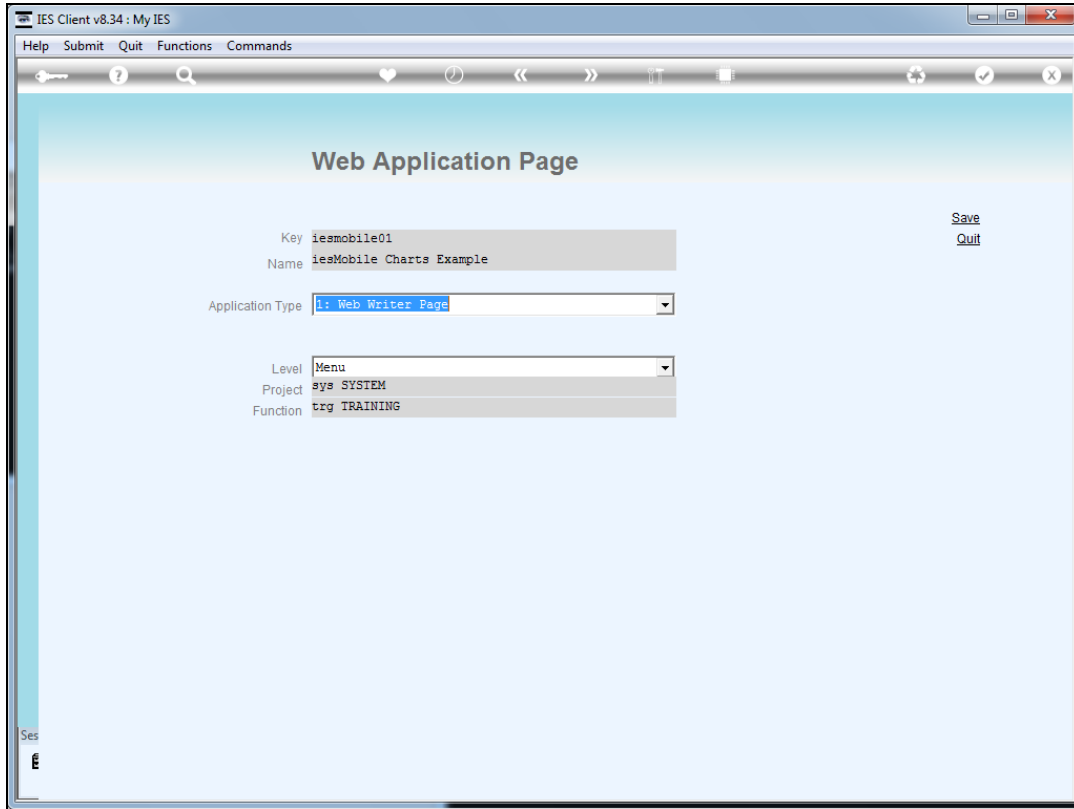
Slide 6

Slide notes:



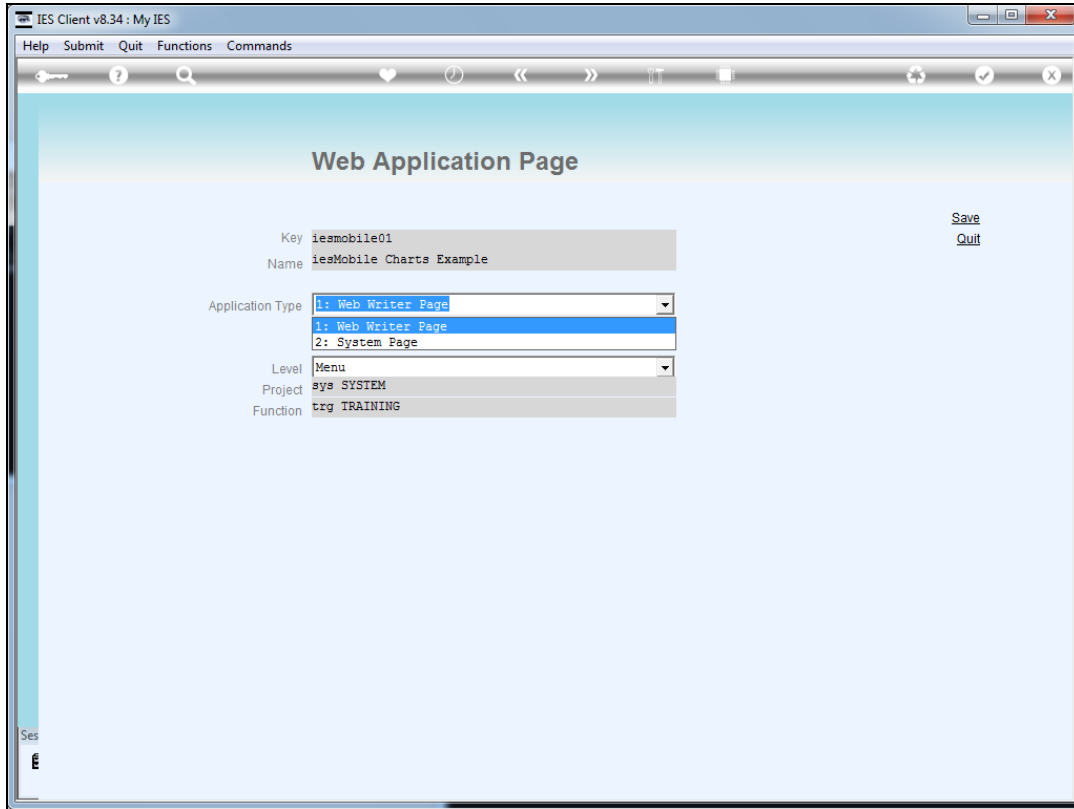
Slide 7

Slide notes: The name is inherited from Web Writer, but we may change it if we wish, as this name will appear on the User Menus.

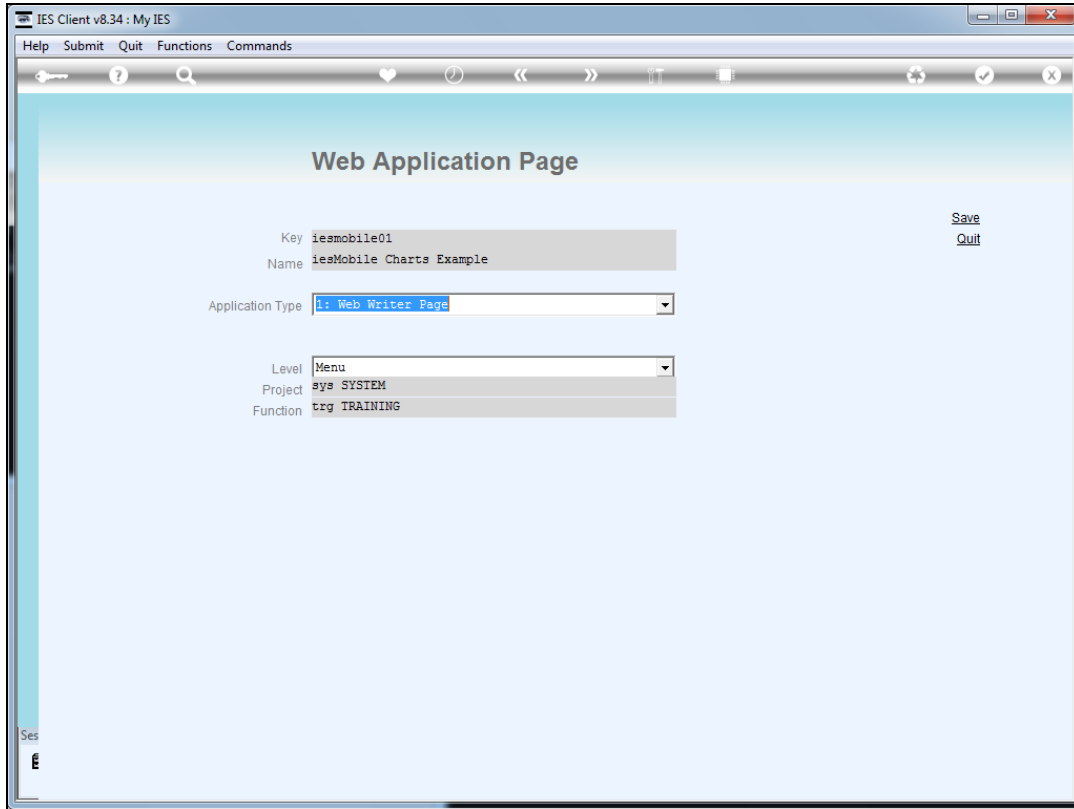


Slide 8

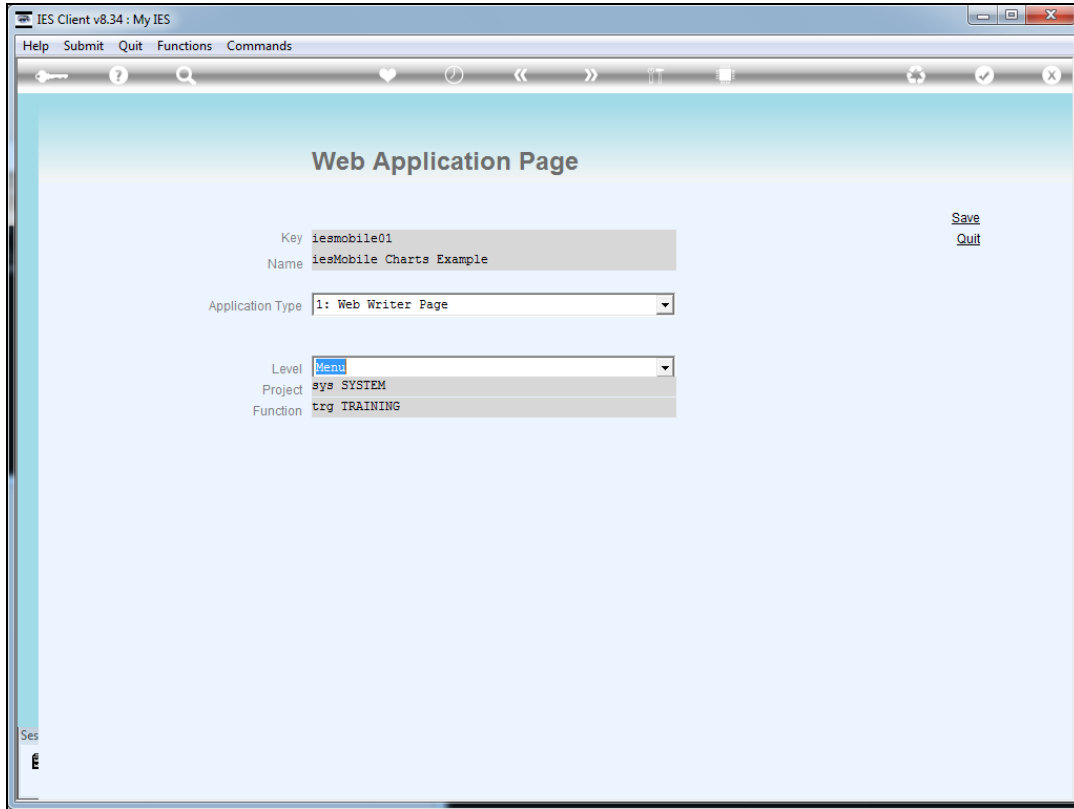
Slide notes: The type will almost always be 'Web Writer', as the system page option is only used by Infolab.



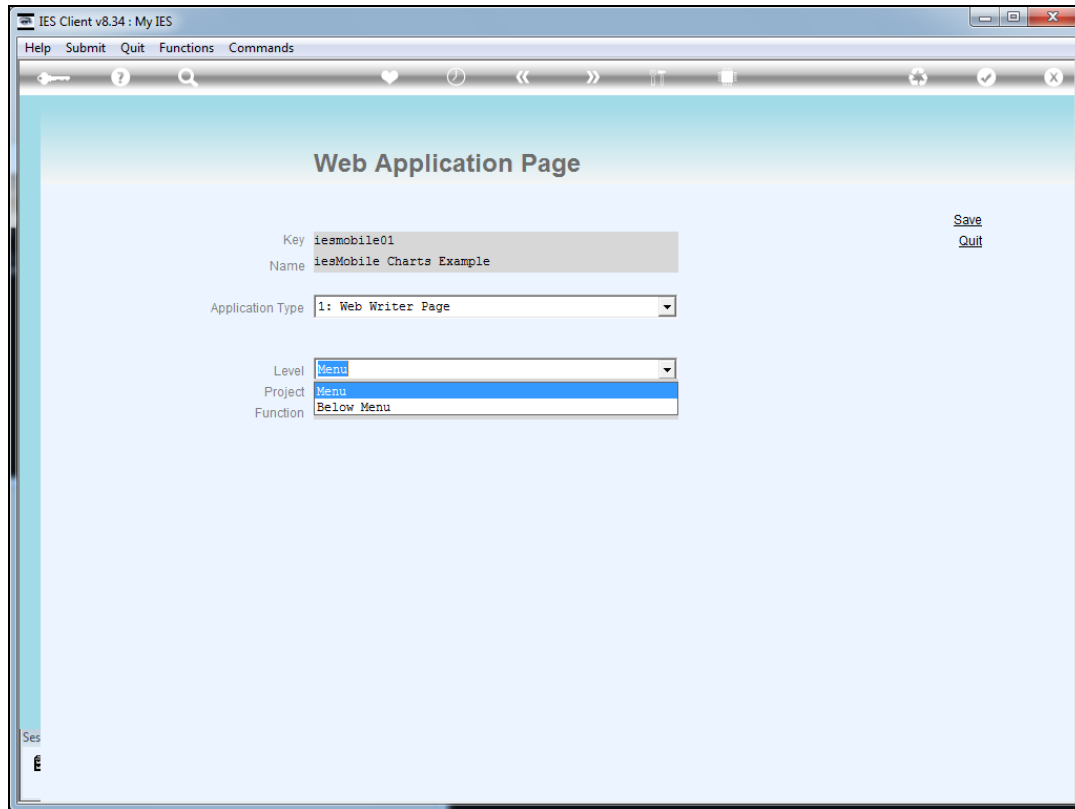
Slide 9
Slide notes:



Slide 10
Slide notes:

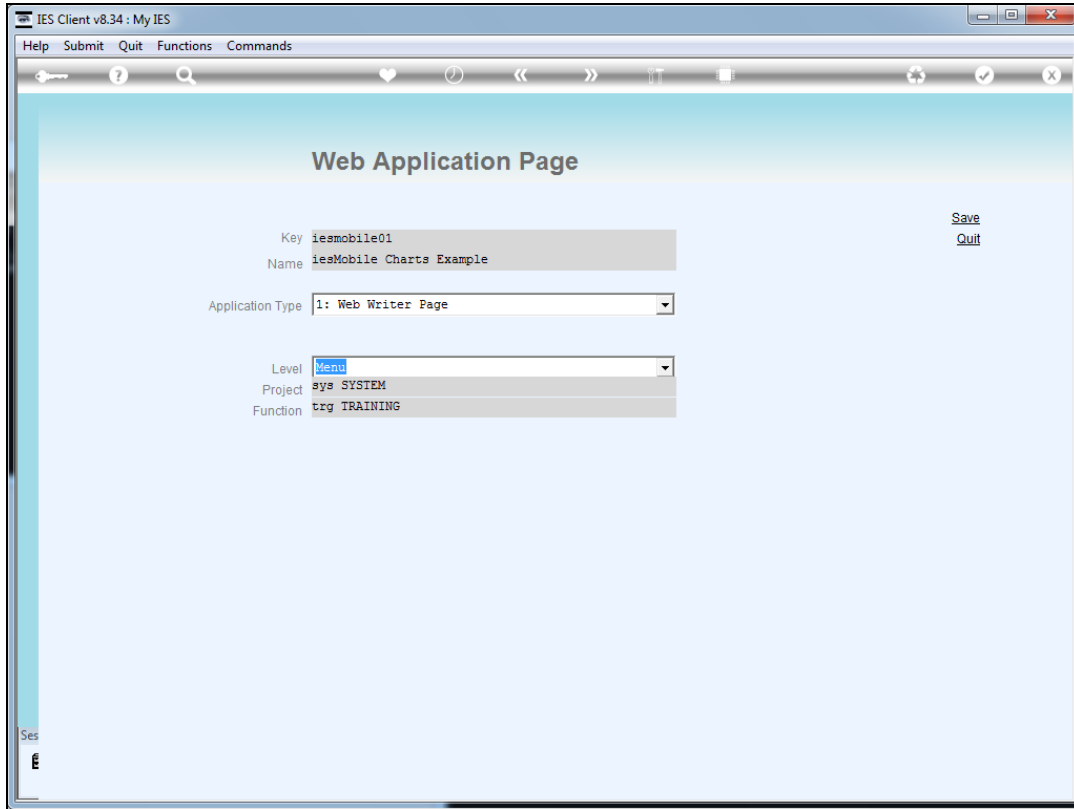


Slide 11
Slide notes:

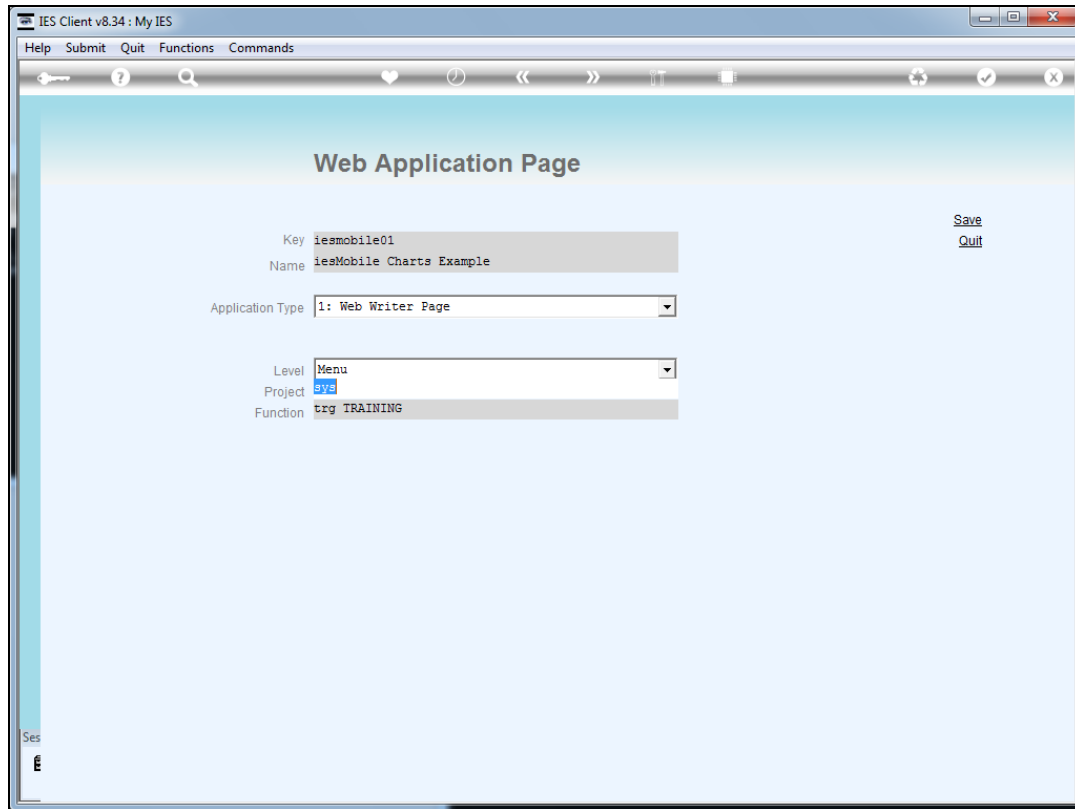


Slide 12

Slide notes: A Page can be at Menu level or below. When at menu level, it means the User can be given access to the page and it can appear on a User menu for direct execution. When below the menu, then it means the Page cannot be directly executed, but must be called from or by another page.



Slide 13
Slide notes:



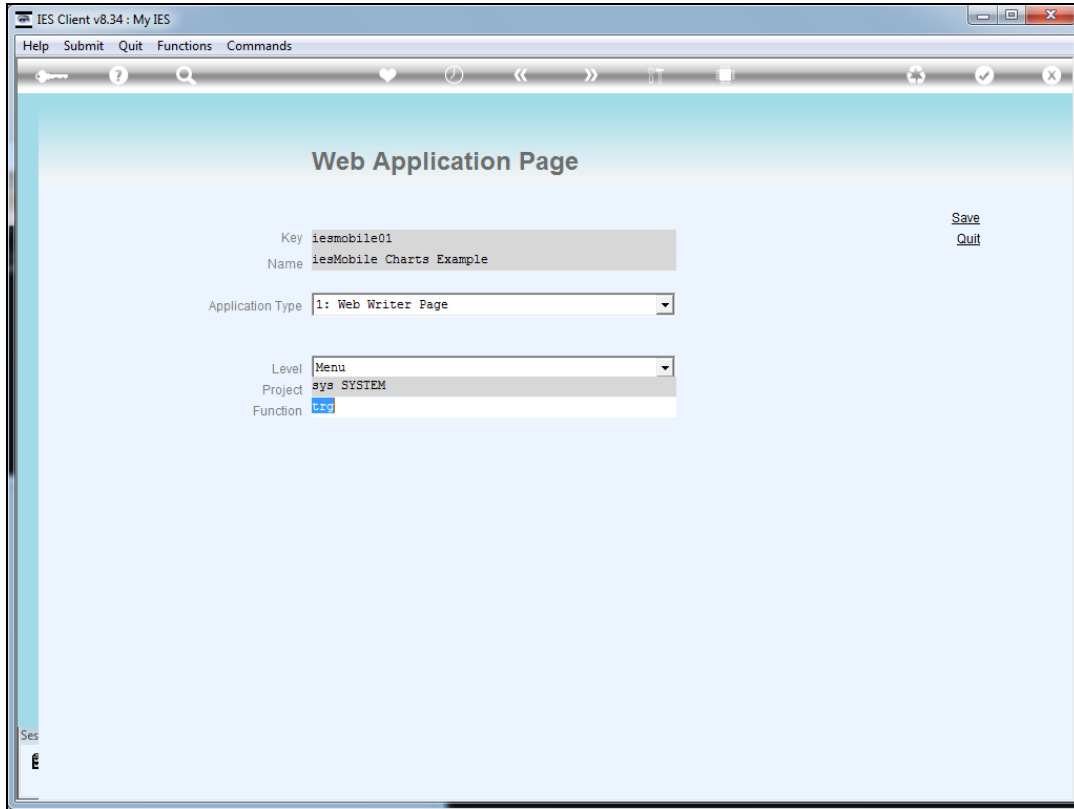
The screenshot shows a web browser window titled "IES Client v8.34 : My IES". The browser's address bar is empty. The main content area displays a form titled "Web Application Page". The form contains the following fields and options:

- Key:** iesmobile01
- Name:** iesMobile Charts Example
- Application Type:** 1: Web Writer Page (selected in a dropdown menu)
- Level:** Menu (selected in a dropdown menu)
- Project:** sys
- Function:** trg TRAINING

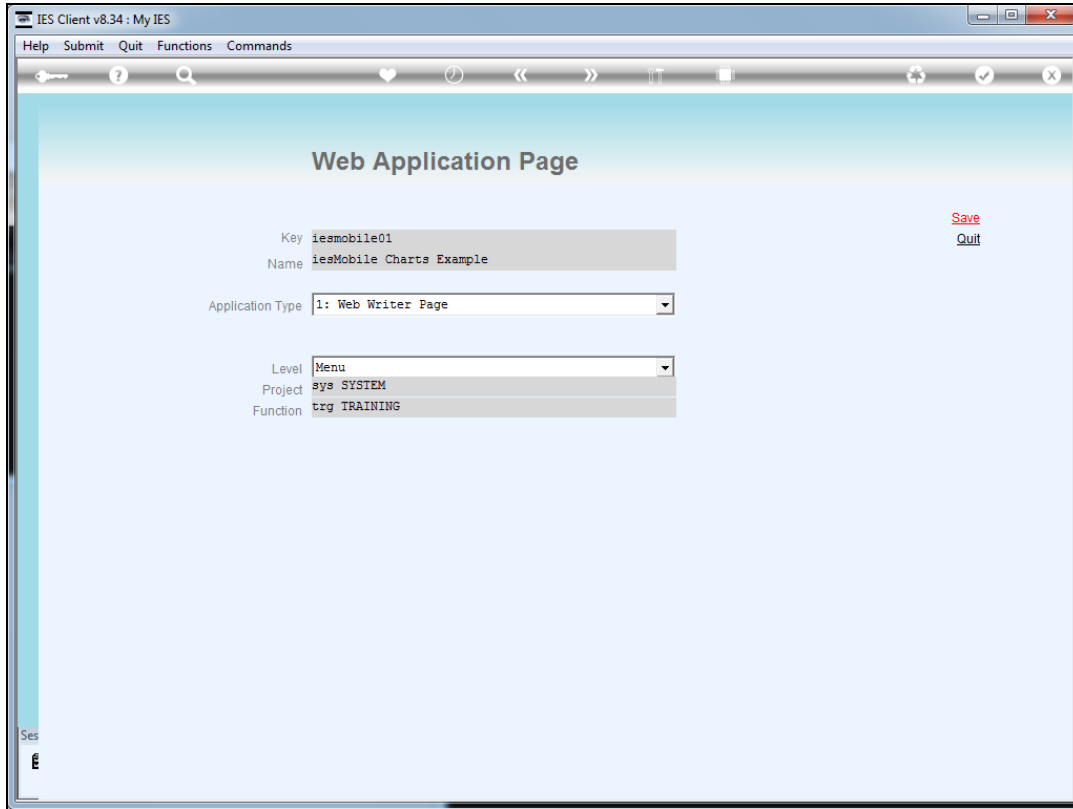
On the right side of the form, there are two links: [Save](#) and [Quit](#). In the bottom left corner of the browser window, there is a small "Ses" label and a logo.

Slide 14

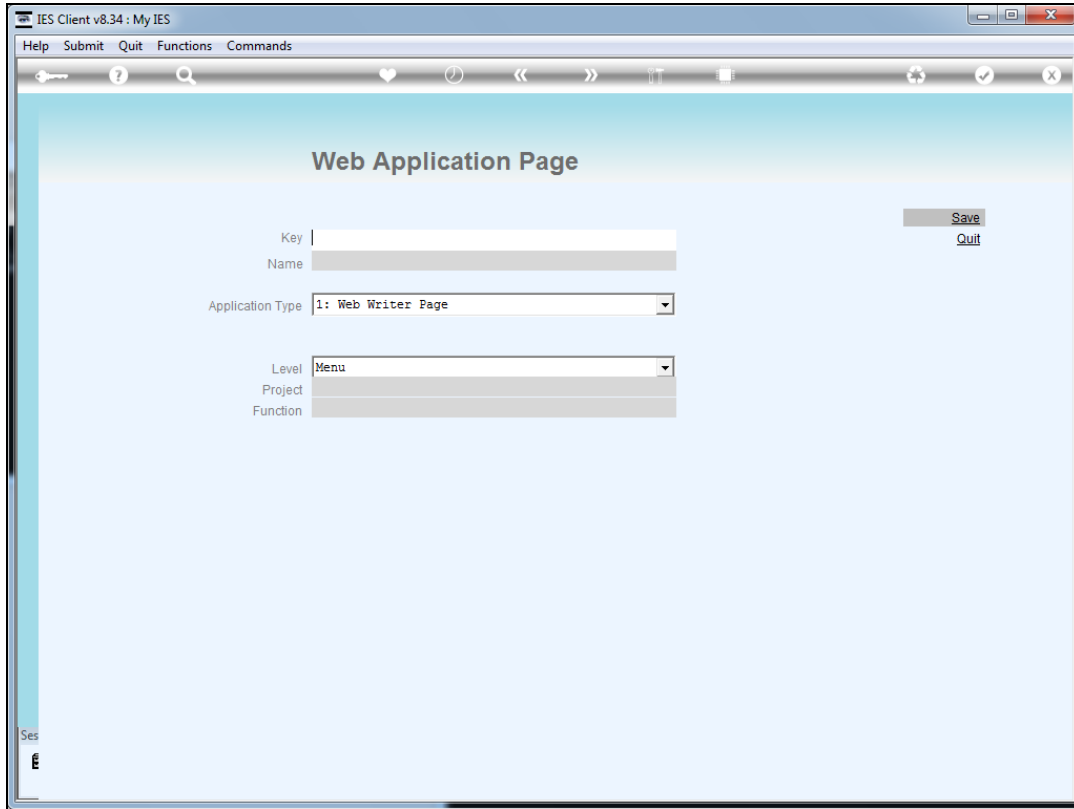
Slide notes: Every Web Application Page must also be classified with a Project and Function. This makes it useful for classification when producing a Report of all Web Application Pages, especially when there are many.



Slide 15
Slide notes:



Slide 16
Slide notes:



Slide 17
Slide notes: