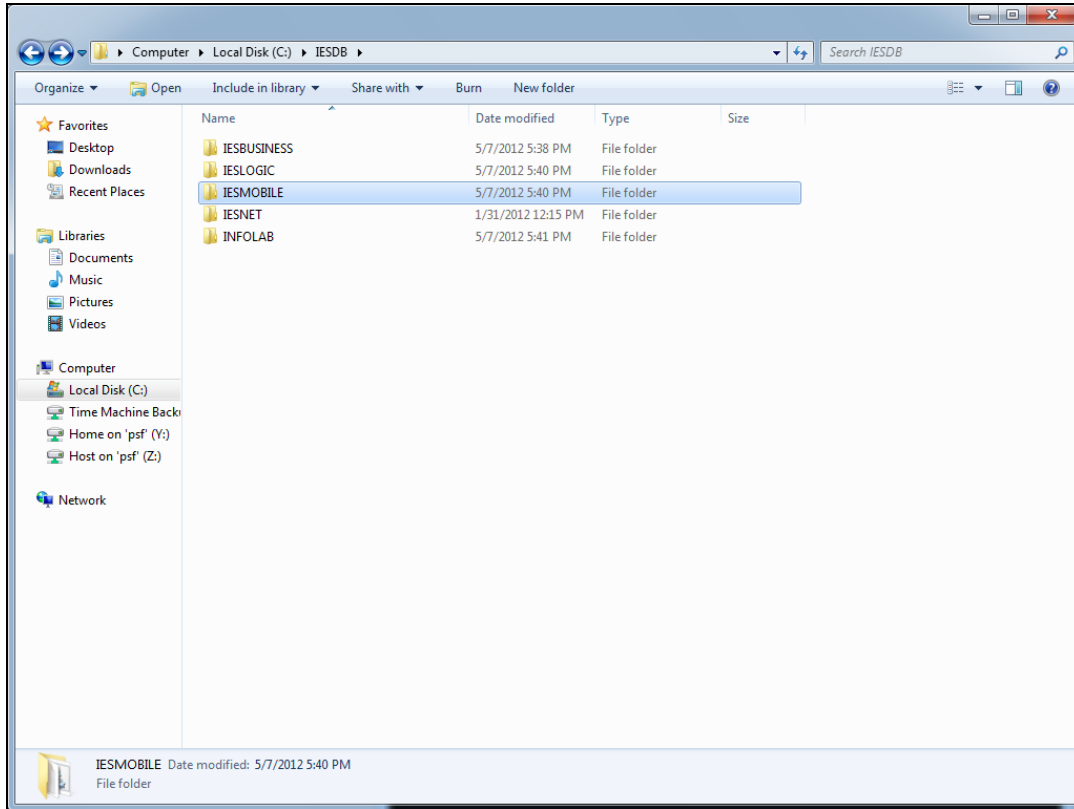
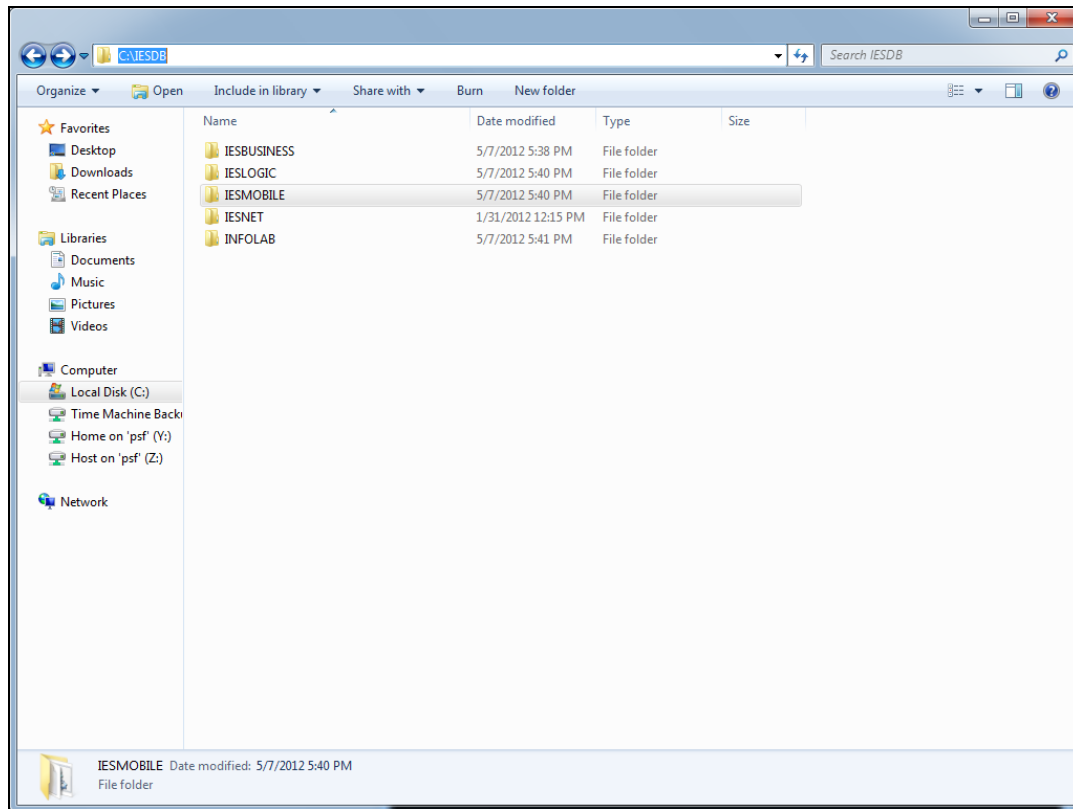


Slide 1

Slide notes: To install iesMobile, we just need to get the IESMOBILE folder from the latest IESPACK and place it on the Server where we wish to run iesMobile. This can be on the IES Server, in which case we place the folder in /IESDB together with other IES Datamarts, or it can be on another Server in which case we just place the IESMOBILE folder itself on that Server.

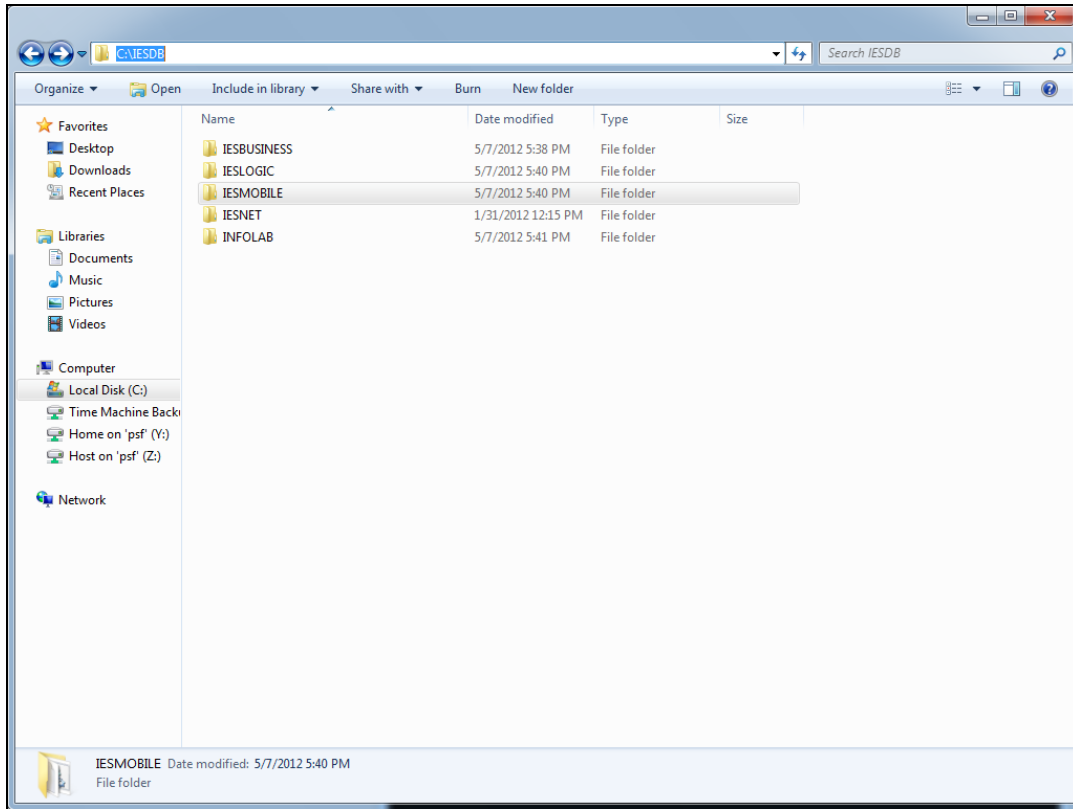


Slide 2
Slide notes:



Slide 3

Slide notes: If we place IESMOBILE on the IES Server, then it is recommended to register IESMOBILE as a Datamart at QMSYS, because this will then give access to Image lookups when developing iesMobile pages. There is no need to register the Datamart in IES itself, and if IESMOBILE is on another Server, then we do not register it at QMSYS either.



Slide 4
Slide notes: