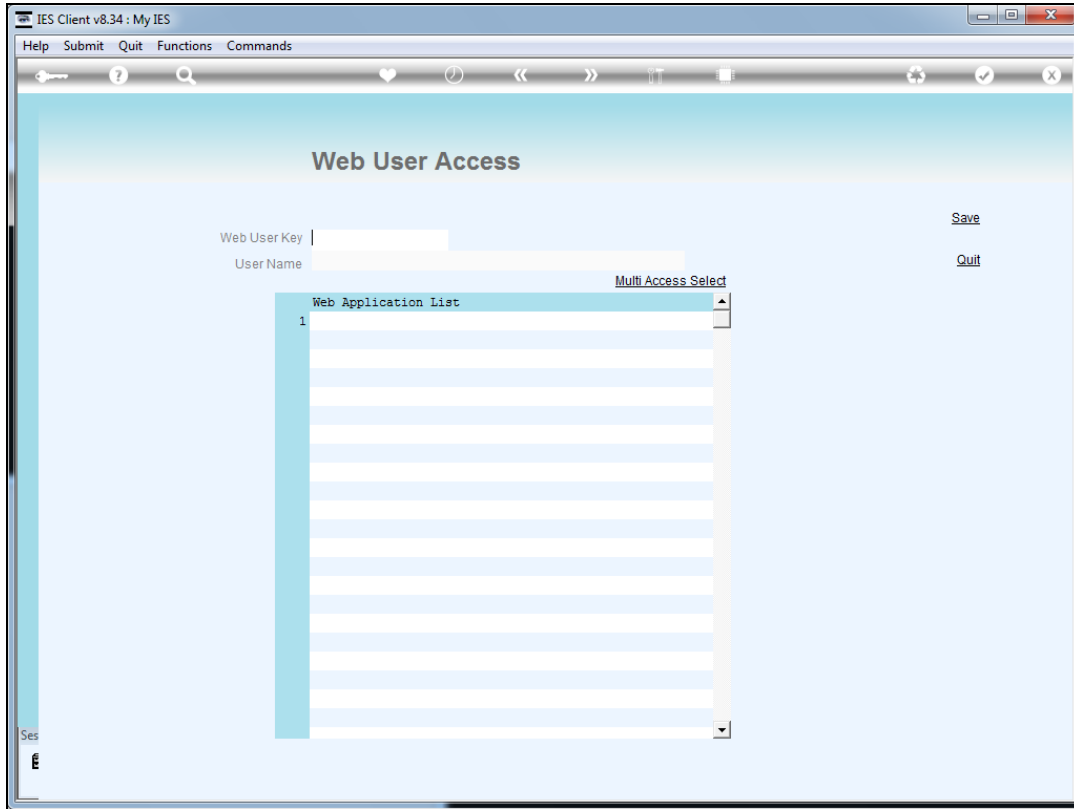


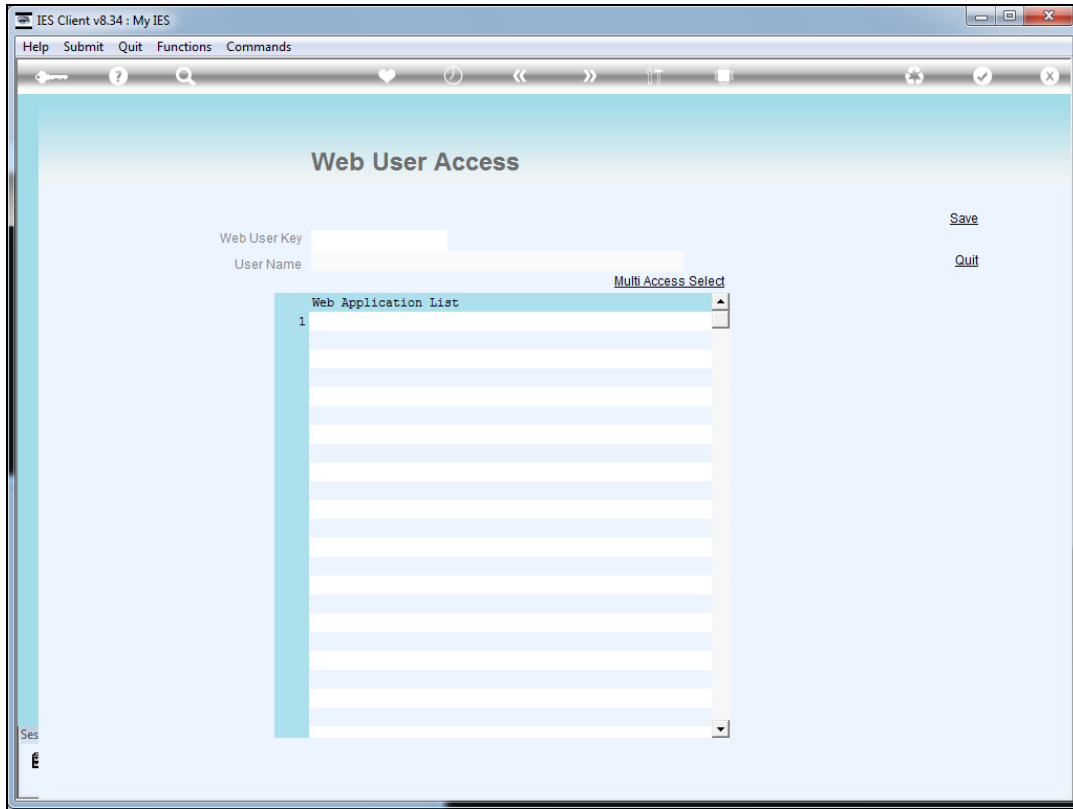
Slide 1

Slide notes: To manage the User Access for Web Users is quite easy, and can be performed in the usual User Access Module, or even in iesMobile itself where a 'Manage Access' option is provided.

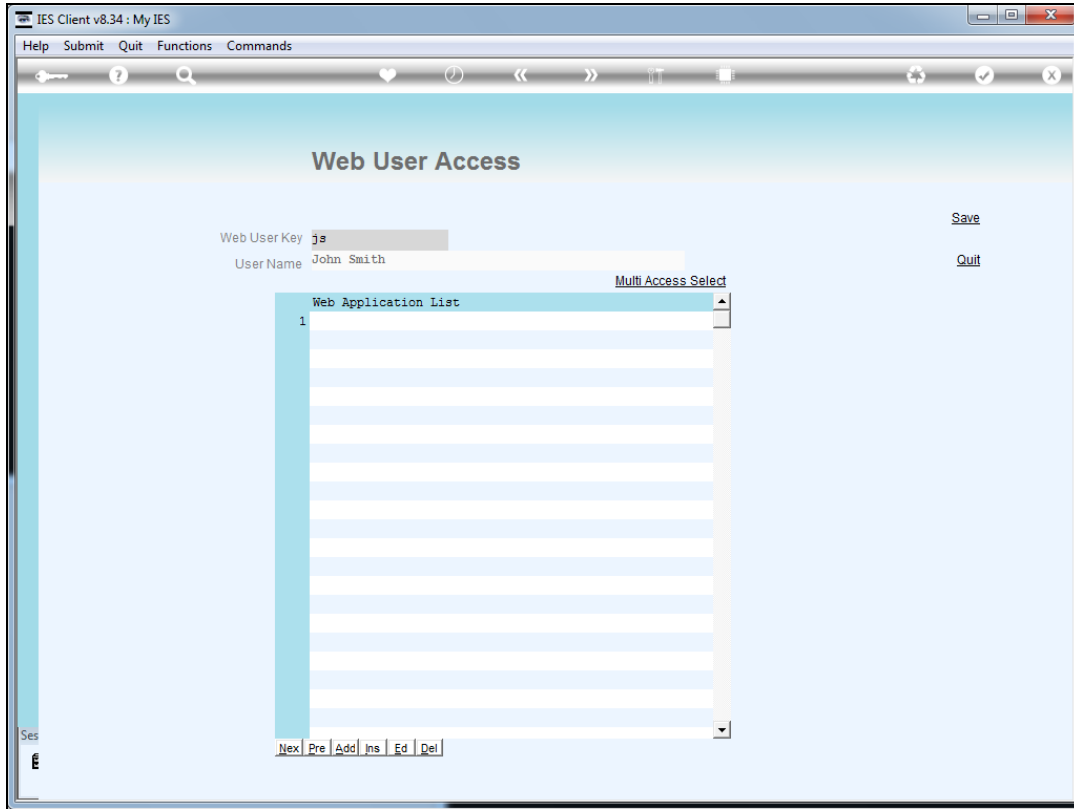


Slide 2

Slide notes: We lookup or specify the Web User key.

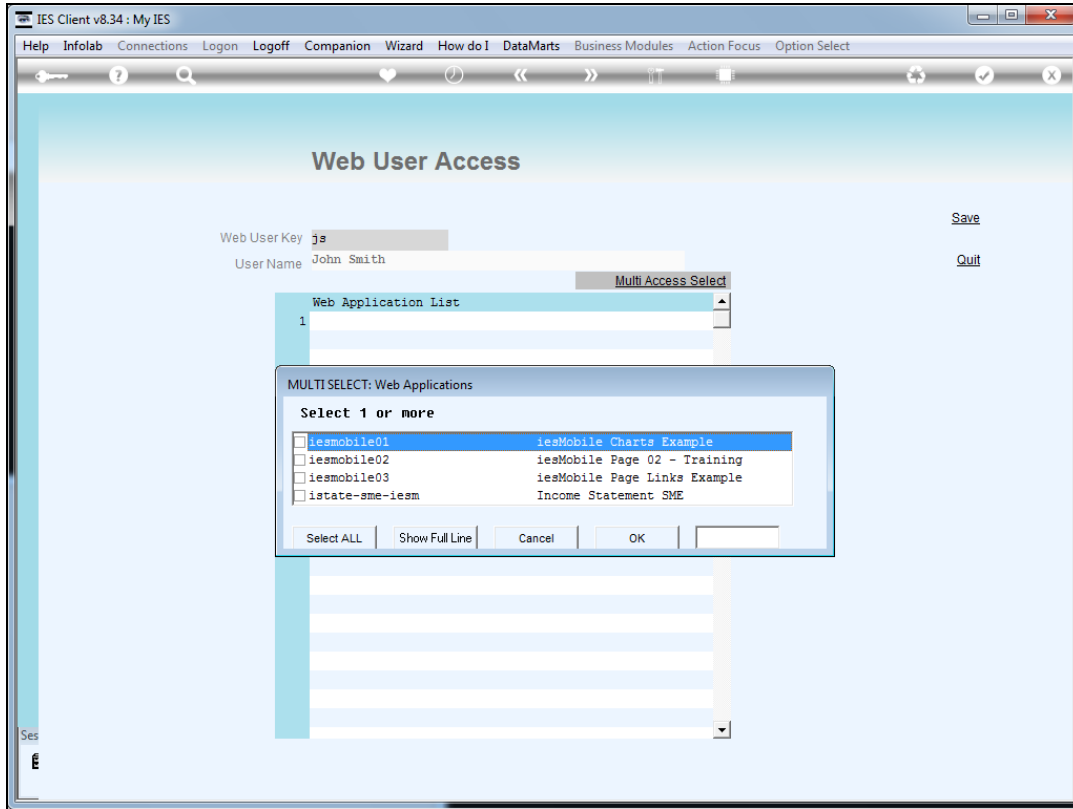


Slide 3
Slide notes:

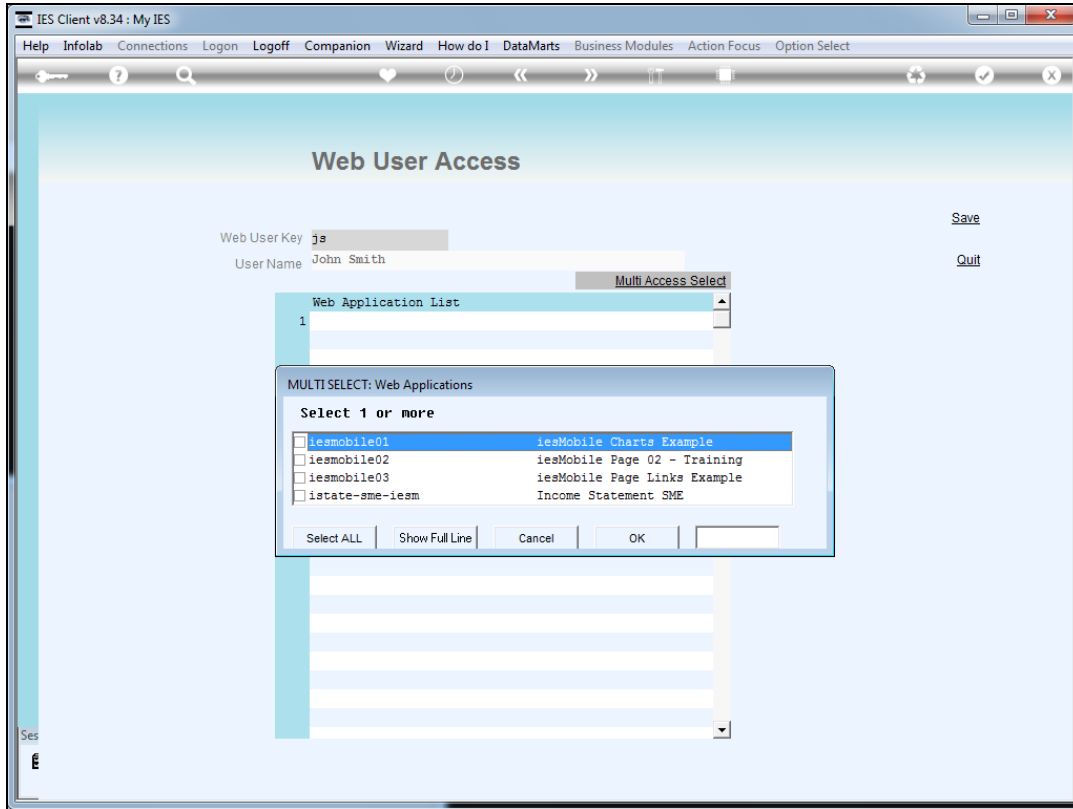


Slide 4

Slide notes: With the 'Multi Access Select' option it is easy to select the options we wish this User to have in this Datamart. Of course, any access management is local only to the current Datamart.

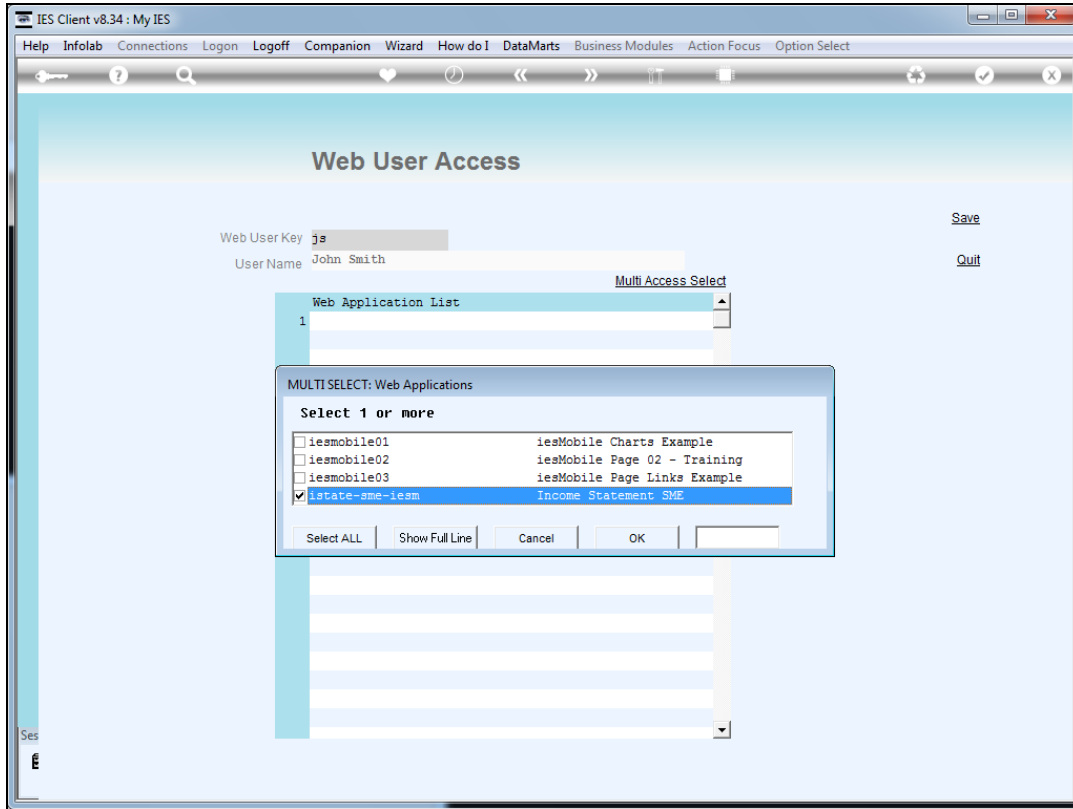


Slide 5
Slide notes:

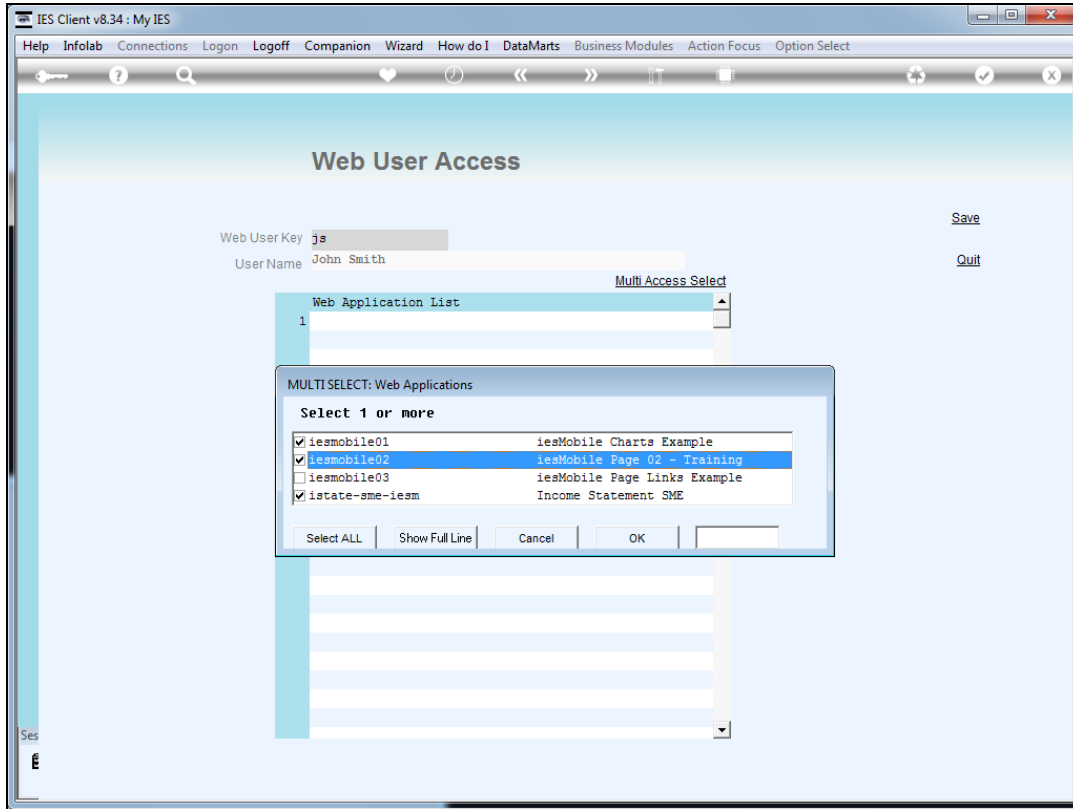


Slide 6

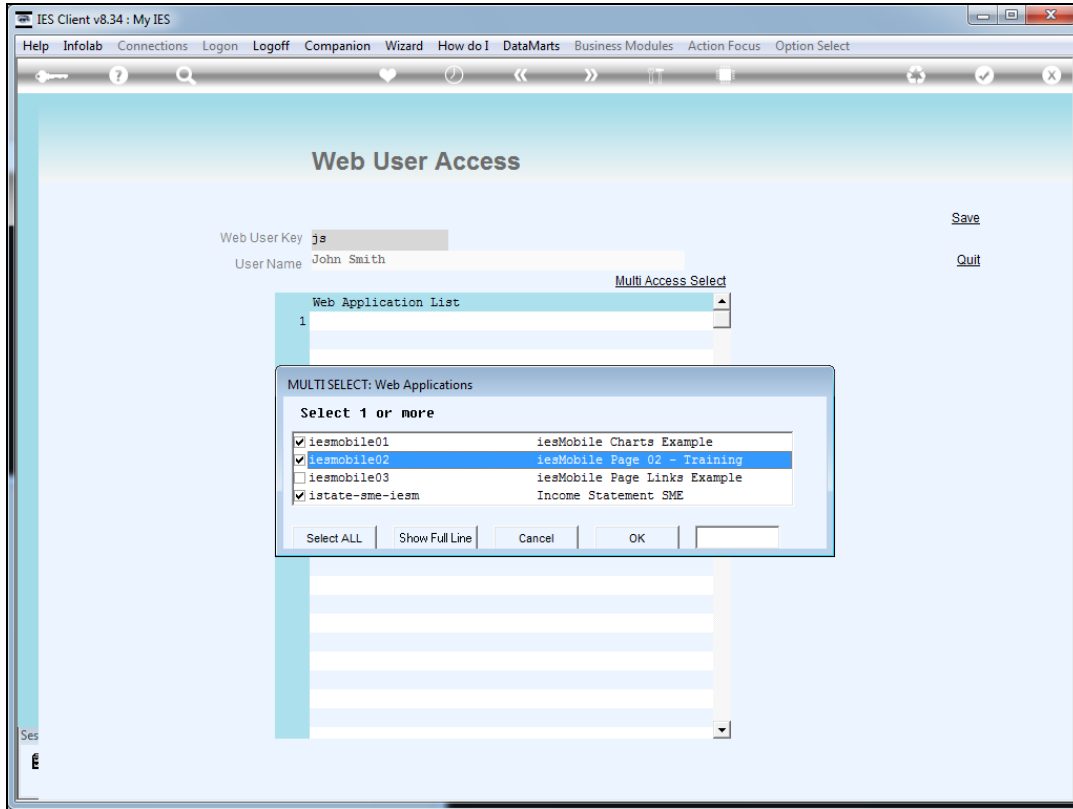
Slide notes: The order in which we select the options is also the order that will be used on the User's menu.



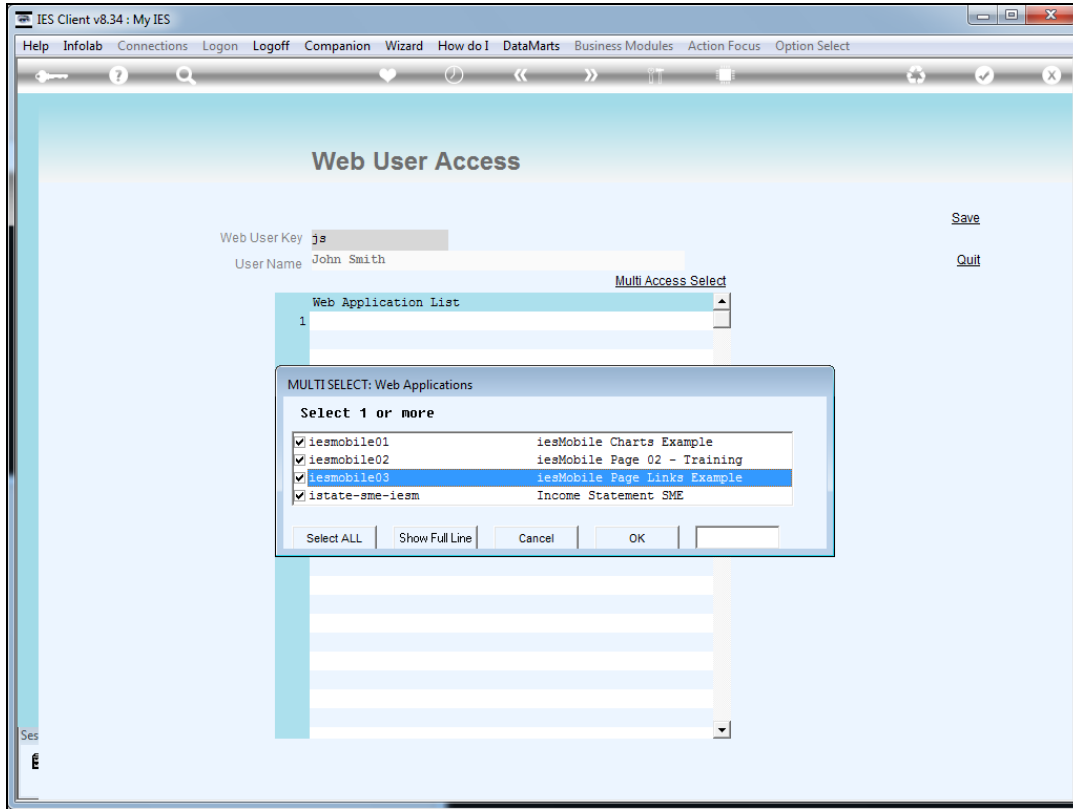
Slide 7
Slide notes:



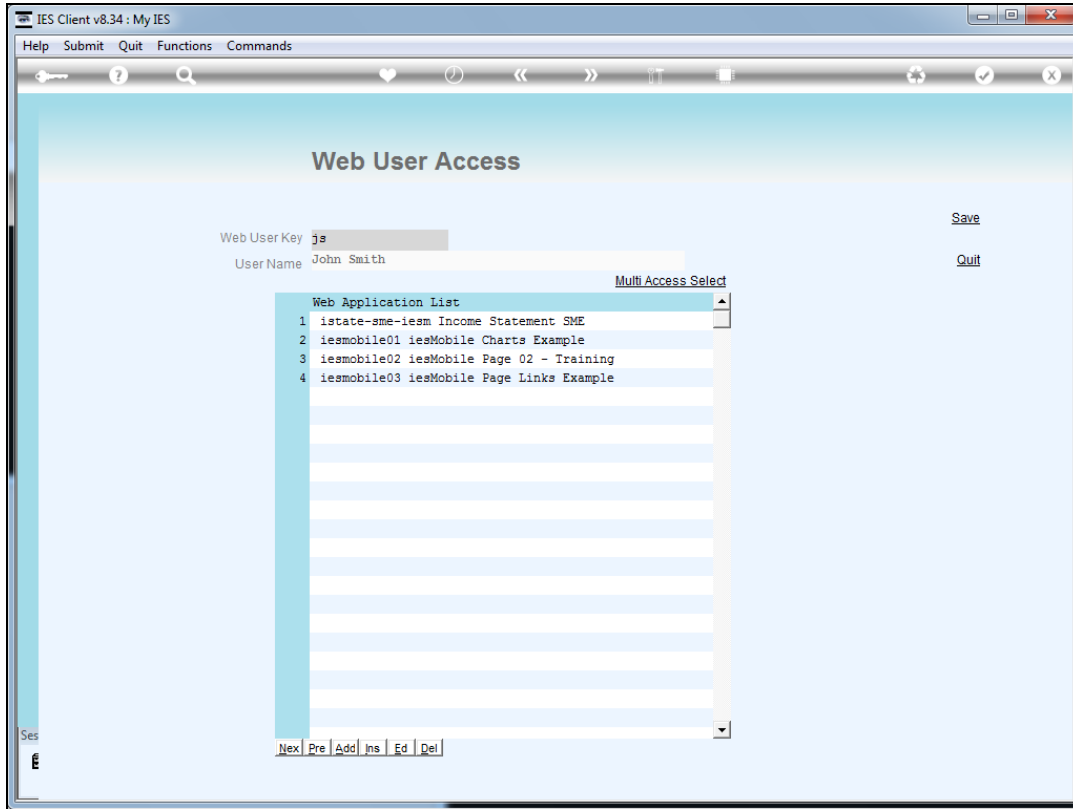
Slide 8
Slide notes:



Slide 9
Slide notes:

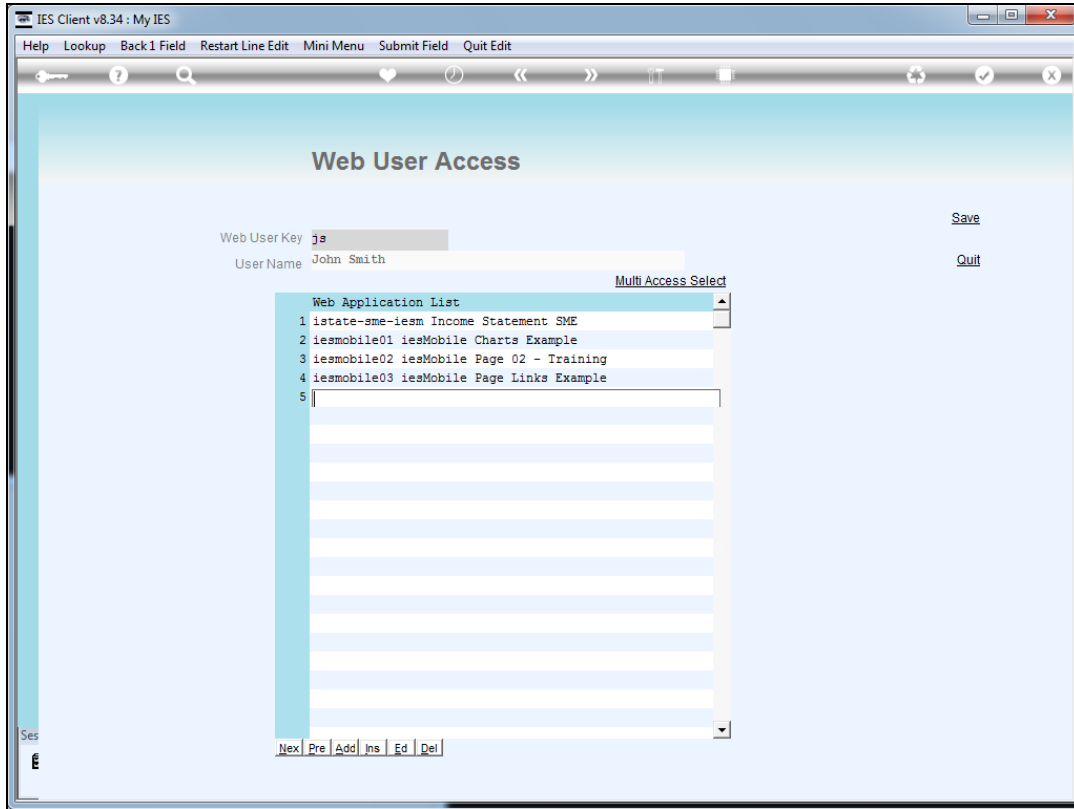


Slide 10
Slide notes:

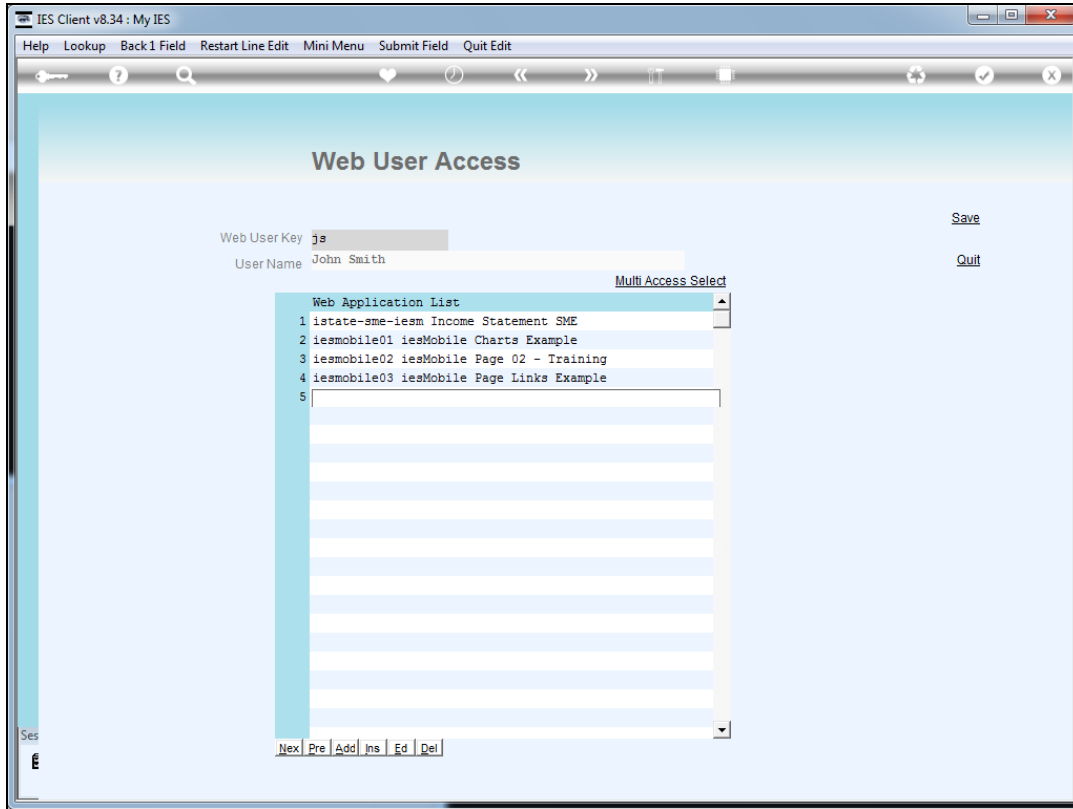


Slide 11

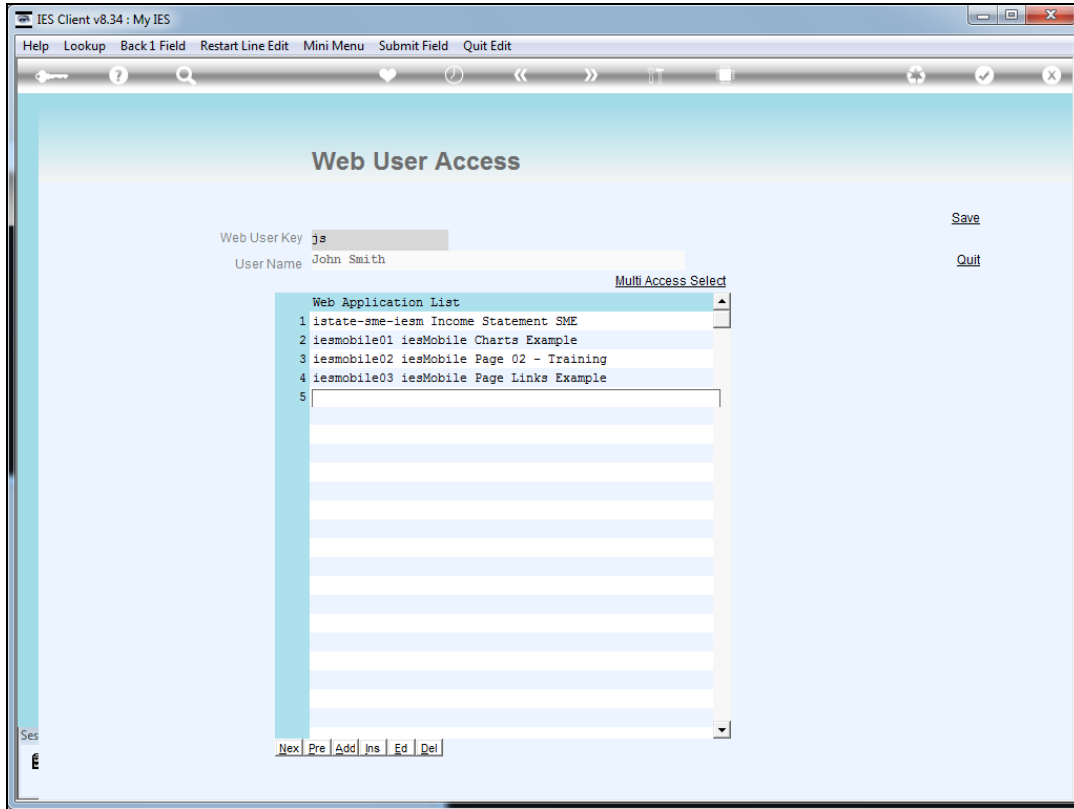
Slide notes: It is also possible to select options manually, i.e. line by line, if we so choose.



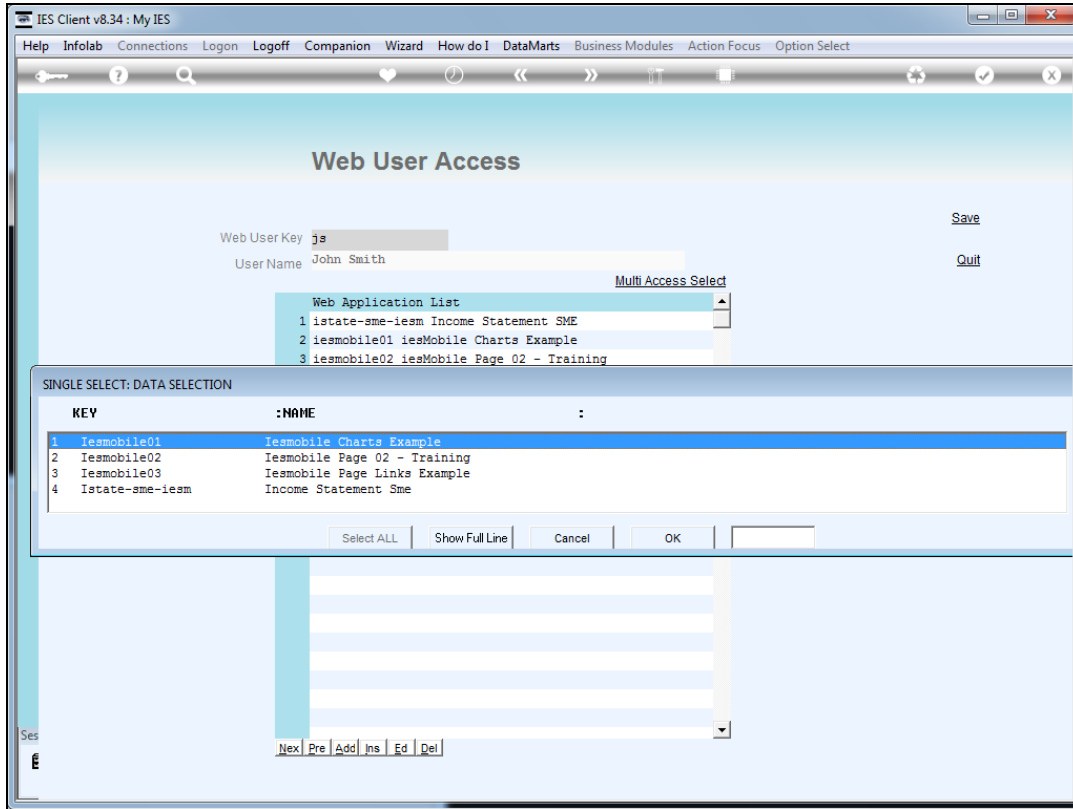
Slide 12
Slide notes:



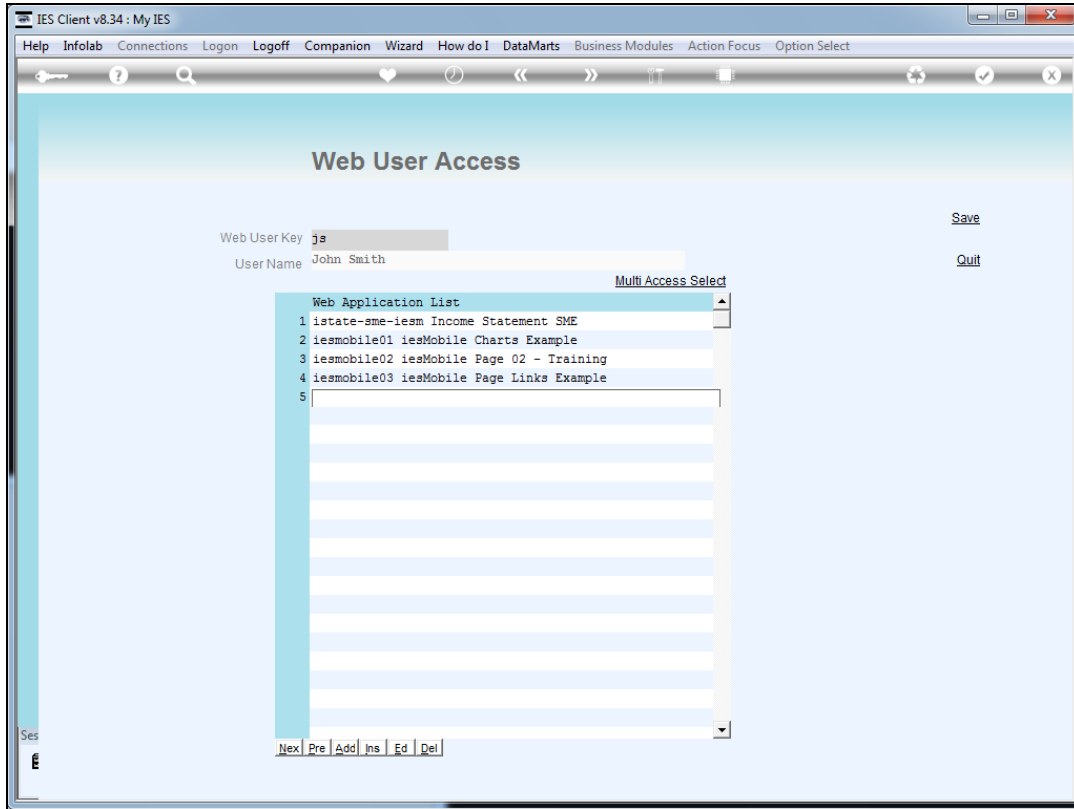
Slide 13
Slide notes:



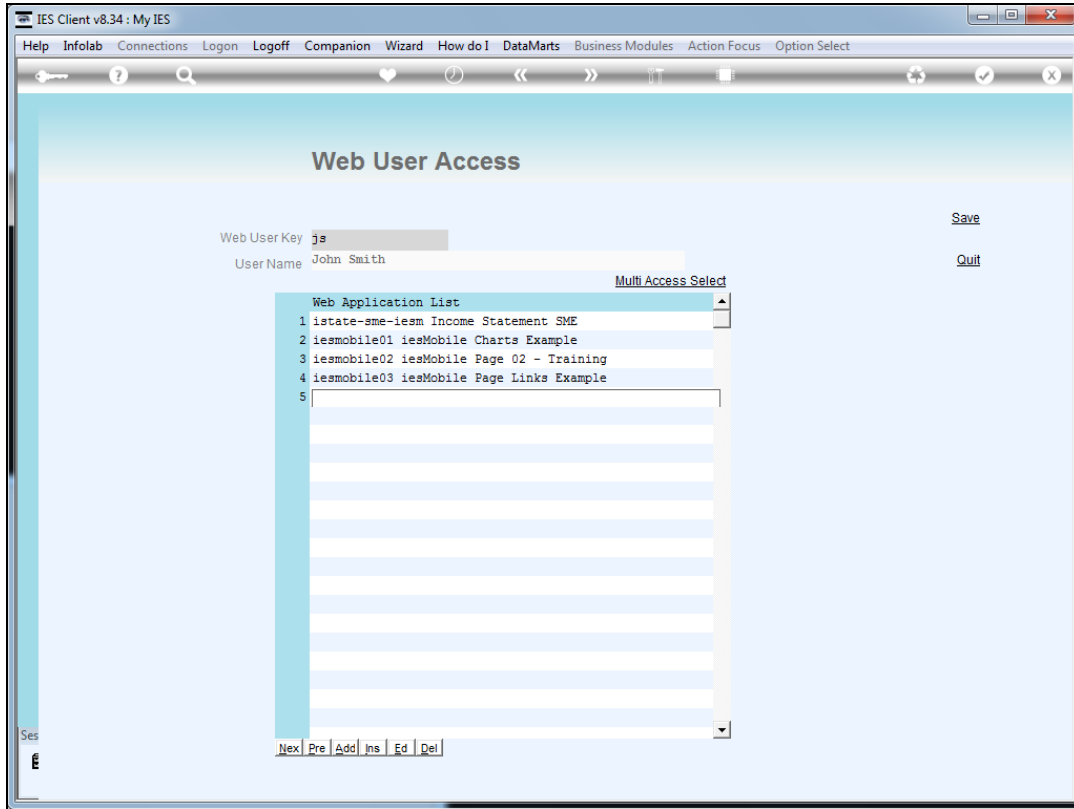
Slide 14
Slide notes:



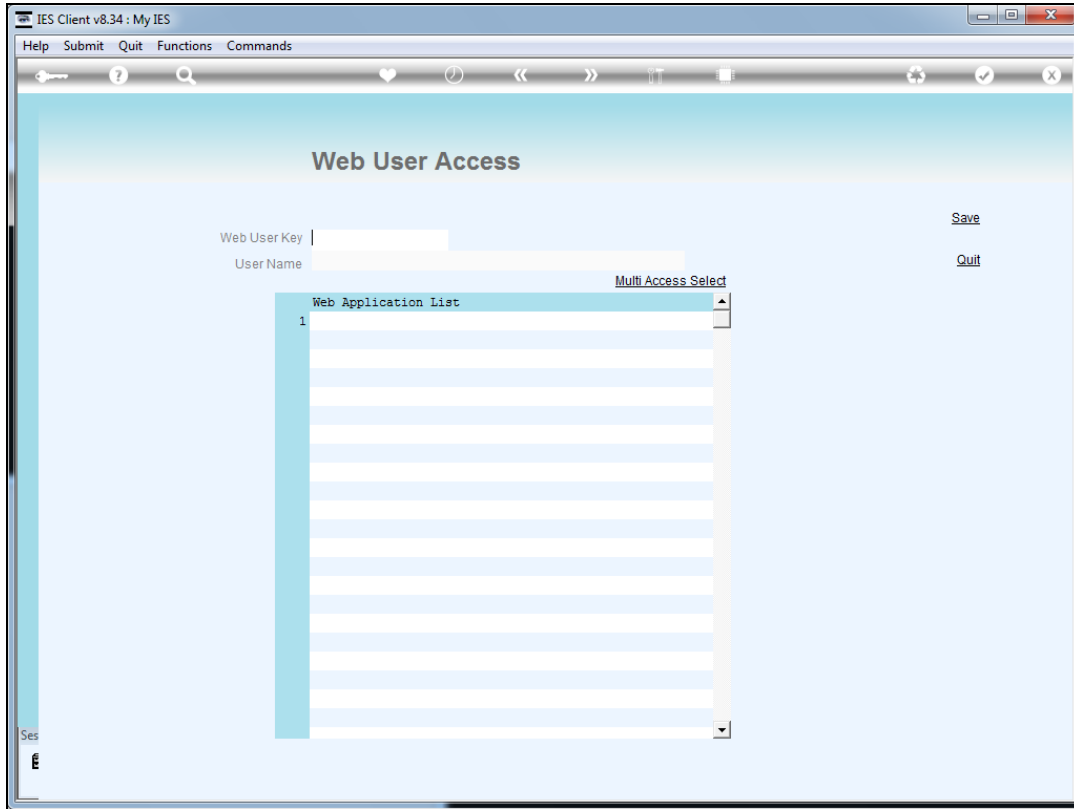
Slide 15
Slide notes:



Slide 16
Slide notes:



Slide 17
Slide notes:



Slide 18
Slide notes: