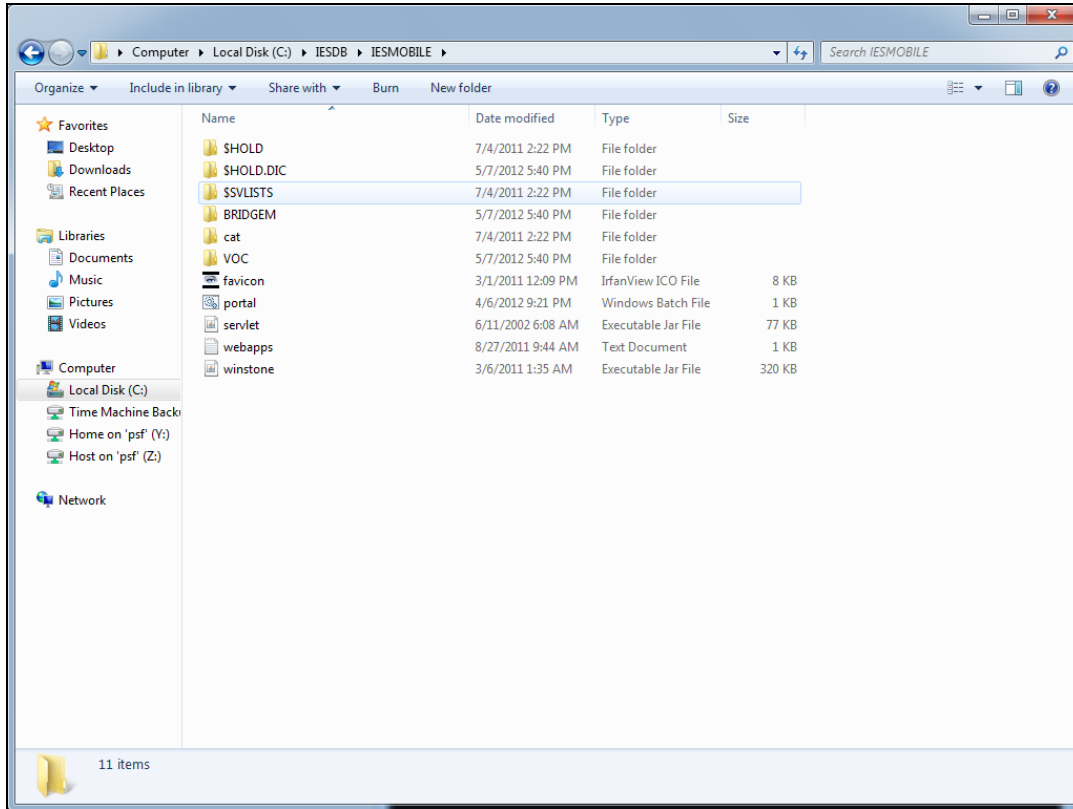
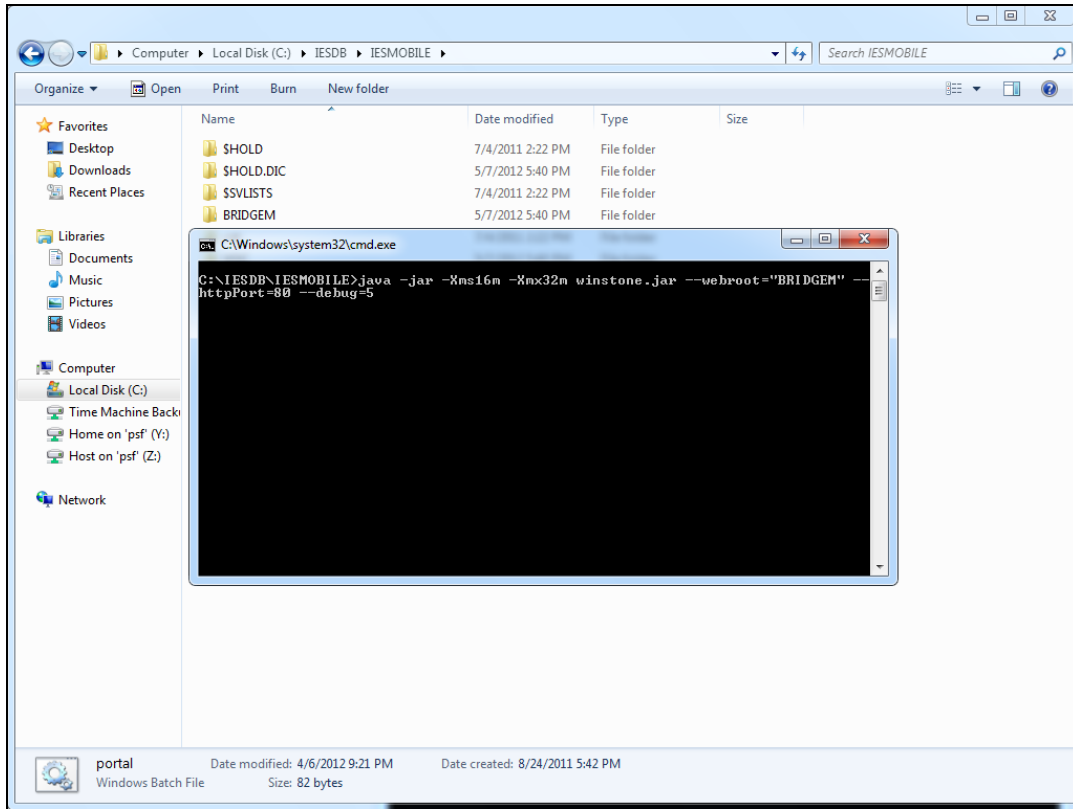


Slide 1

Slide notes: To run or start the iesMobile service, we just run the portal file that we find in the IESMOBILE folder.

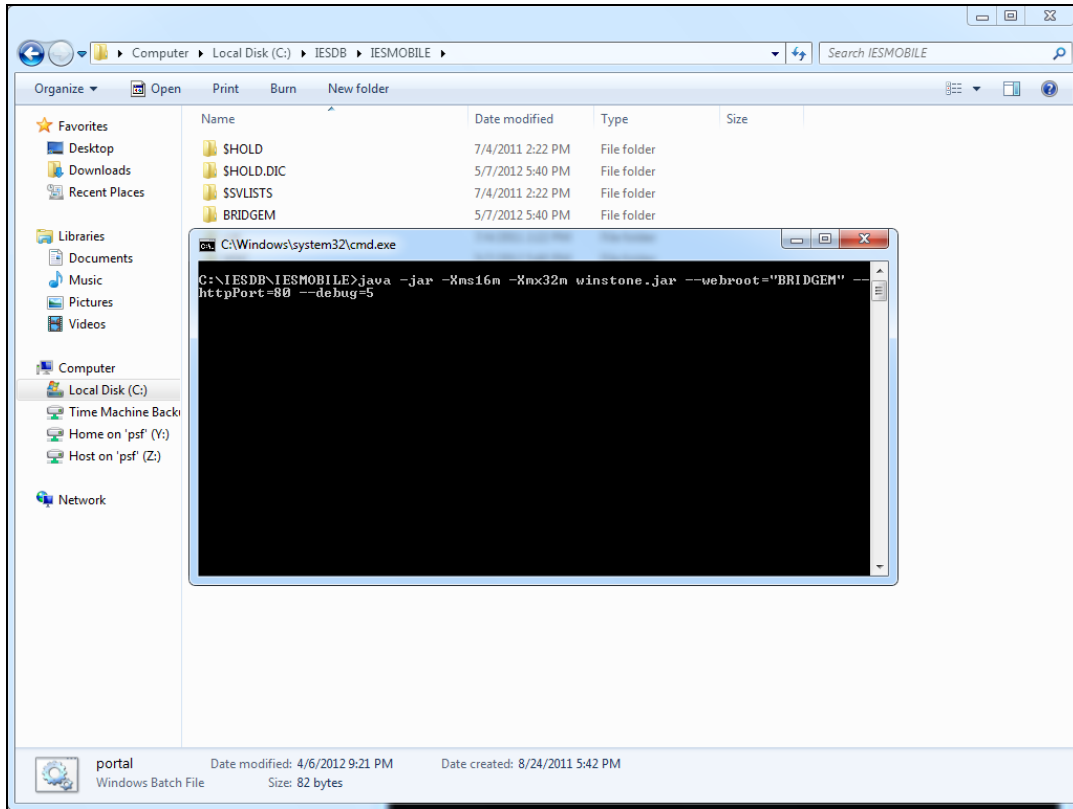


Slide 2  
Slide notes:



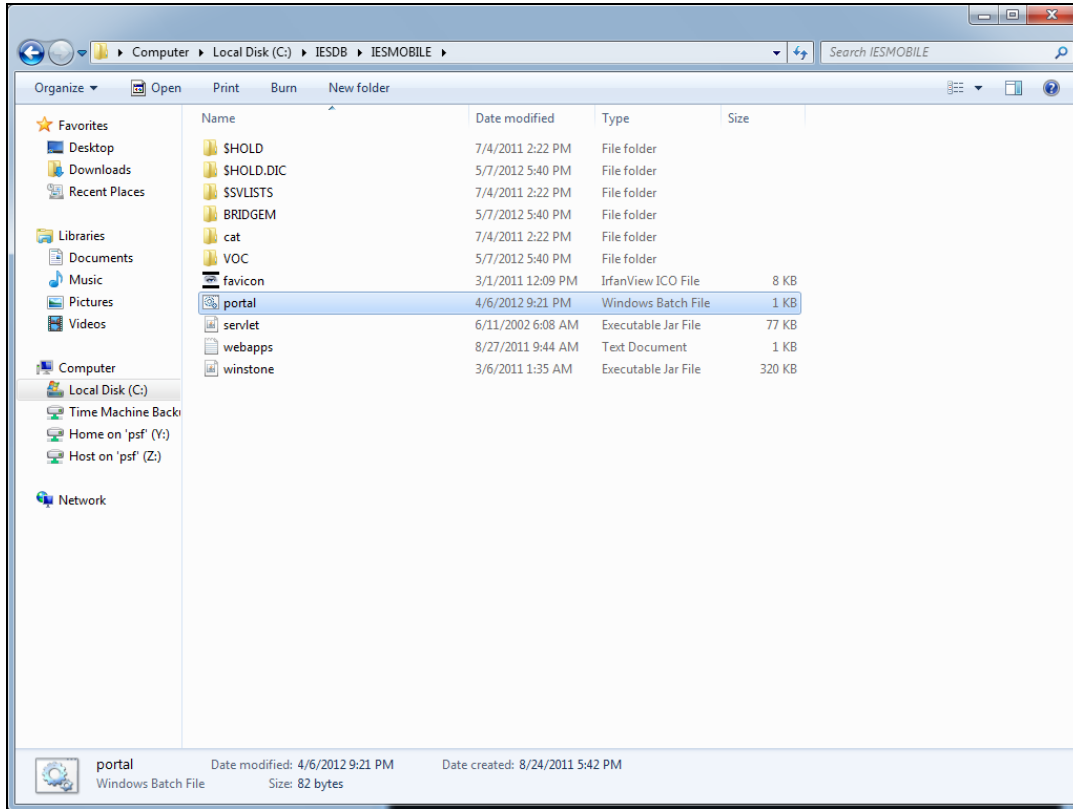
Slide 3

Slide notes: The iesMobile service is now running.

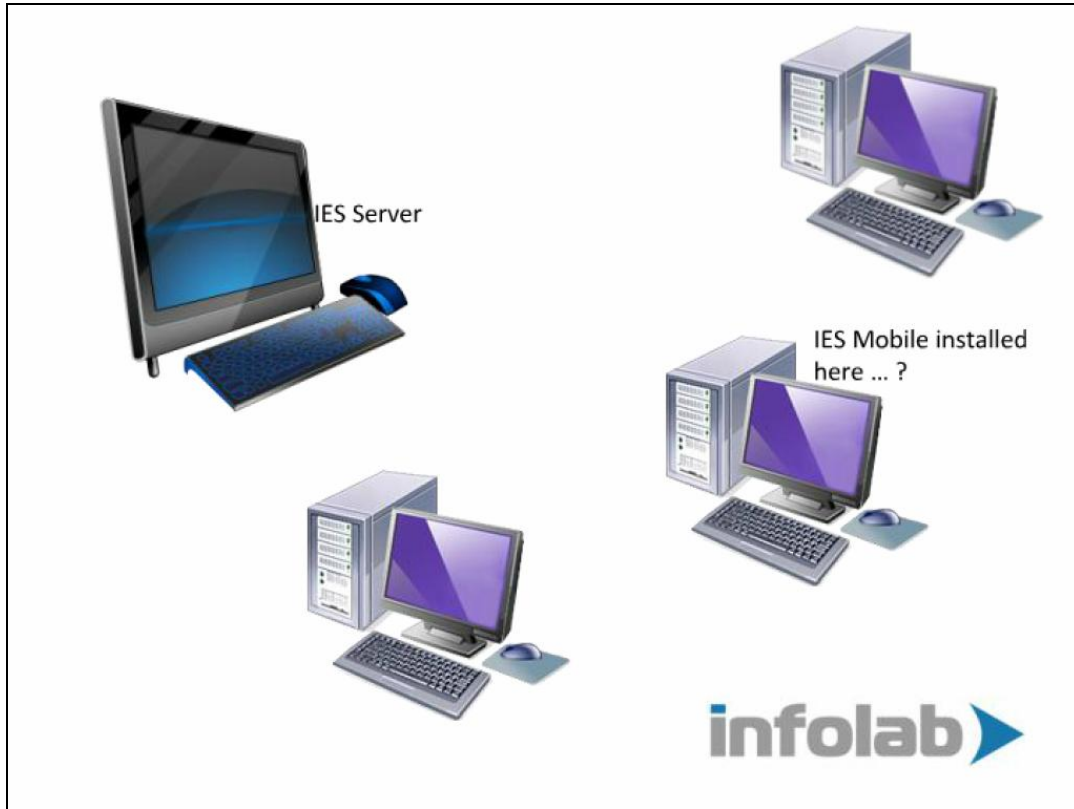


Slide 4

Slide notes: And we can stop the service on demand.



Slide 5  
Slide notes:



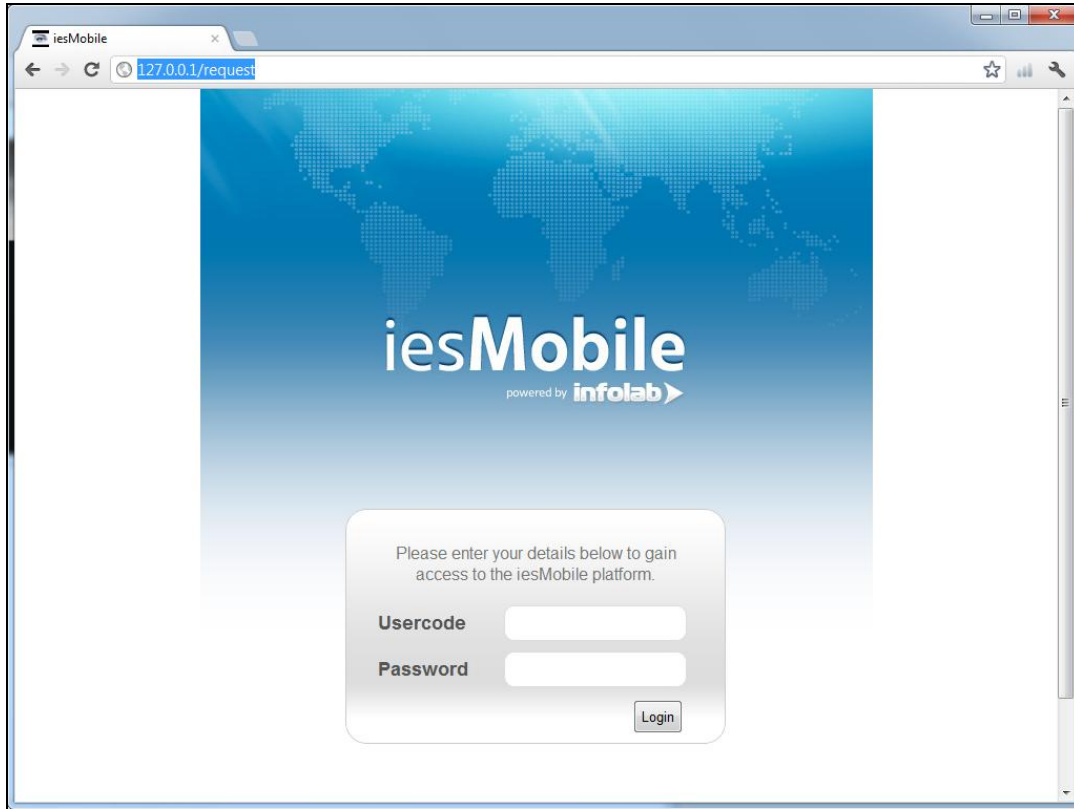
Slide 1

Slide notes: iesMobile can be on the IES Server or any other Server, and access to the service is based on the URL for the Server where iesMobile is running.



Slide 7

Slide notes: The URL to locate the iesMobile service is made up of the ip address of the Server, plus '/request'. Users can access the service from a link or directly.



Slide 8  
Slide notes: