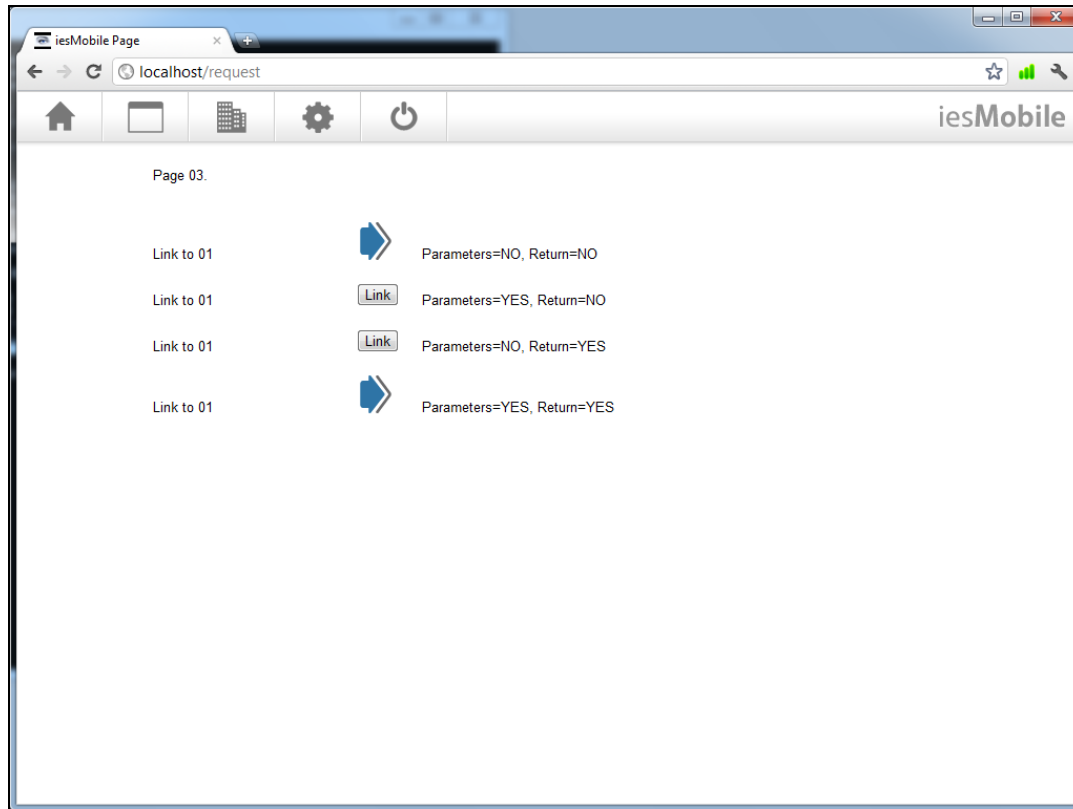


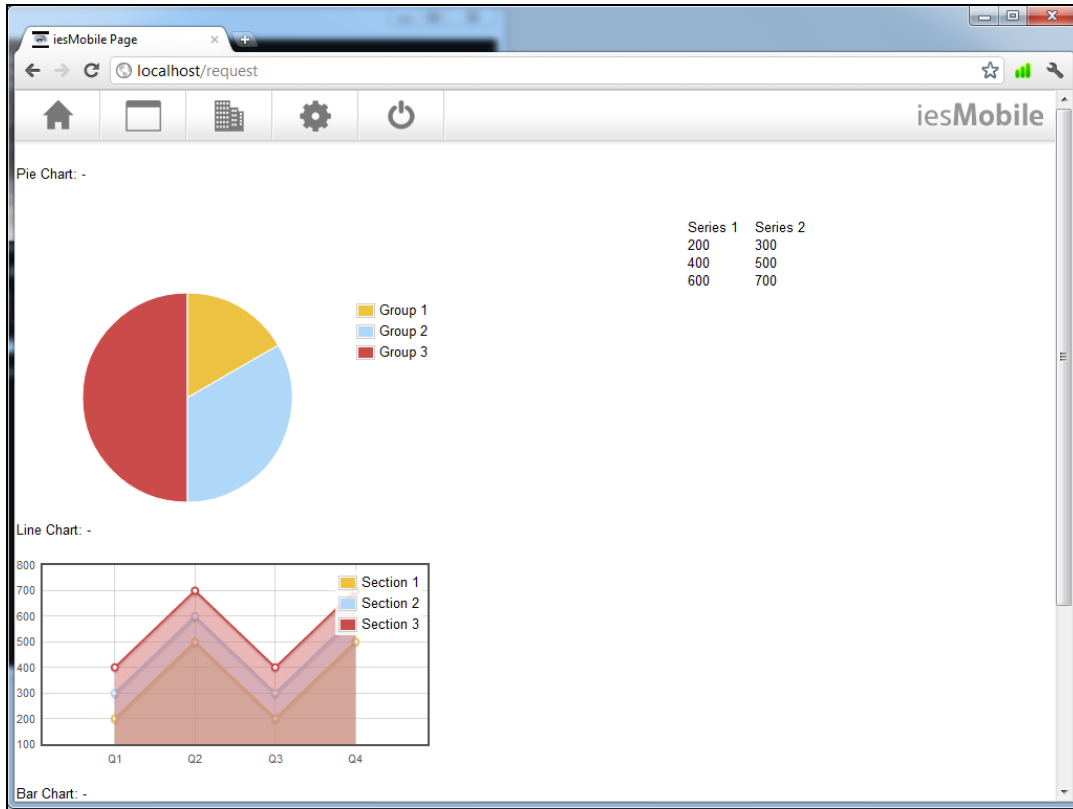
Slide 1

Slide notes: In this tutorial we will show the options to insert Page Links based on User selection.

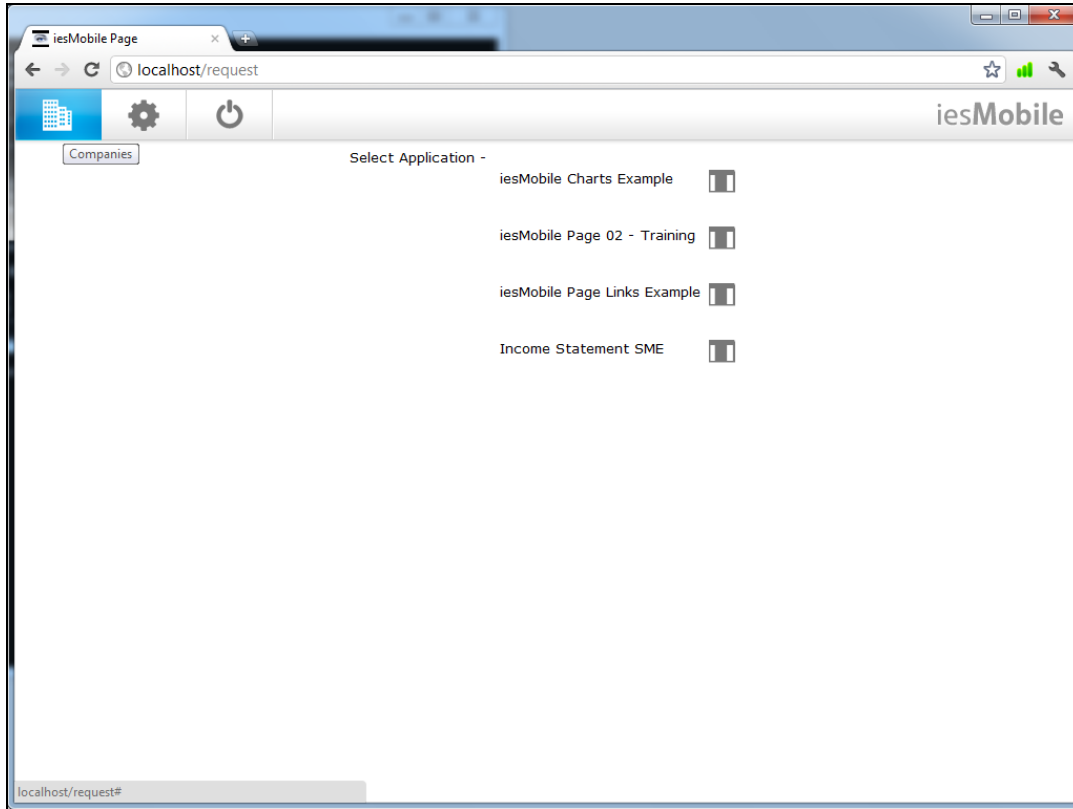


Slide 2

Slide notes: This page shows 4 examples of a User selected page link. In other words, the User may click a button or an image to go to the linked page. Any page link may pass current values from the base page to the linked page, or not pass any values. And any page link may return to the calling page afterwards or not. In the 1st example, no values will be passed, and the page will not return here, but instead will return to the menu afterwards.

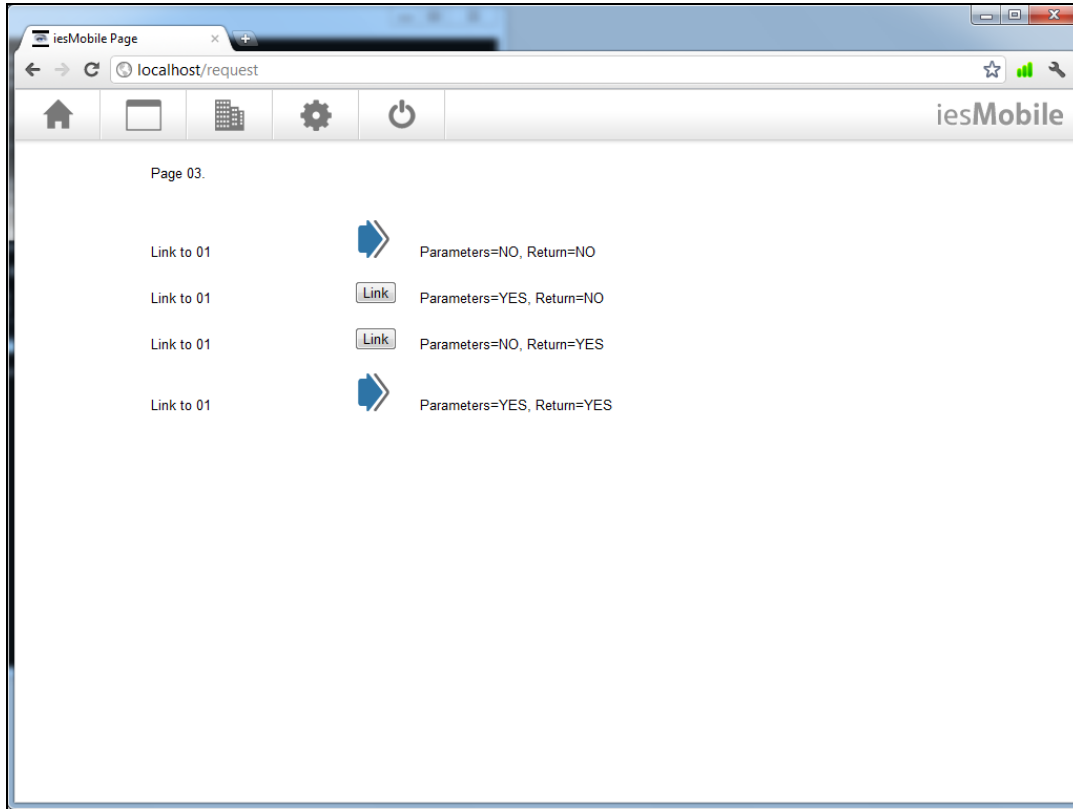


Slide 3
Slide notes:



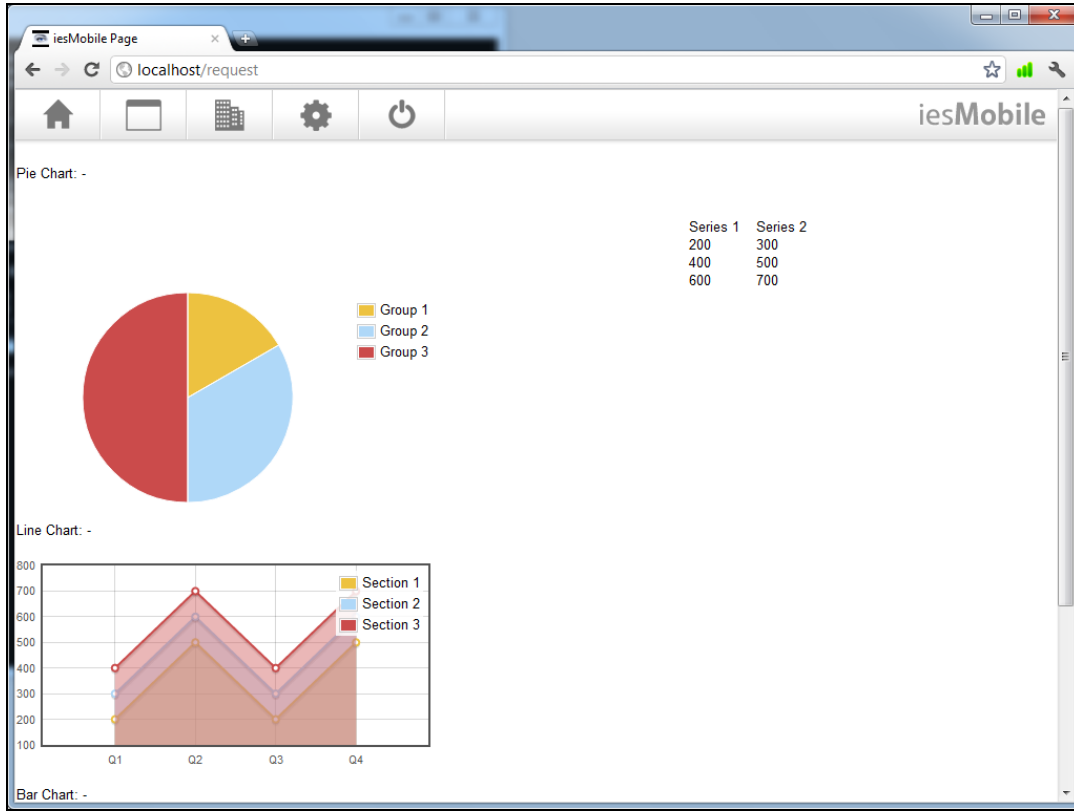
Slide 4

Slide notes: We notice that when we quit the linked page, we return to the menu.

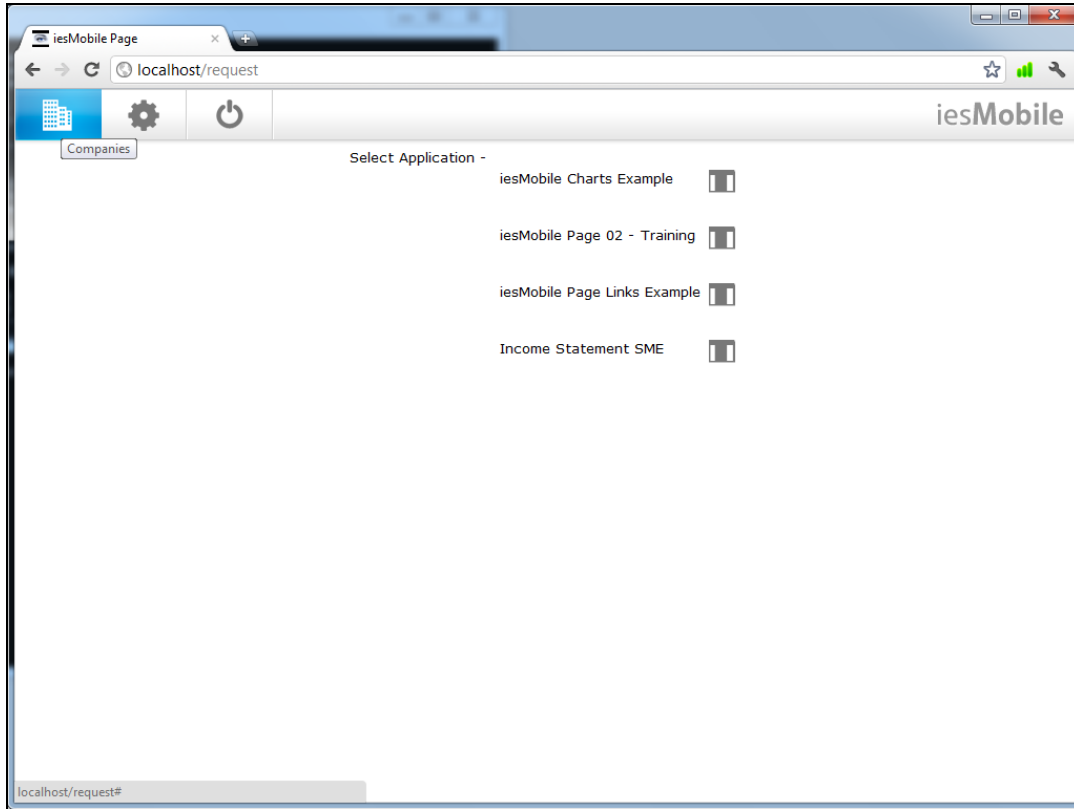


Slide 5

Slide notes: The 2nd link will work the same, except that it will be passing any existing values on the current page to the linked page.

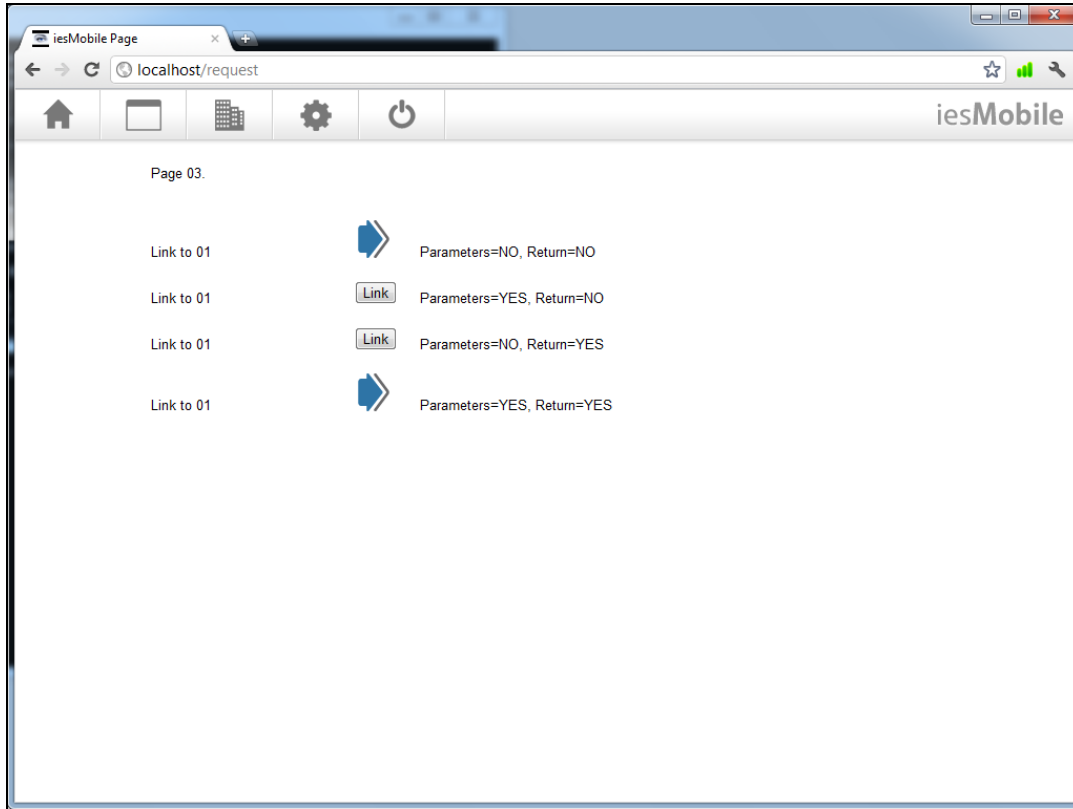


Slide 6
Slide notes:



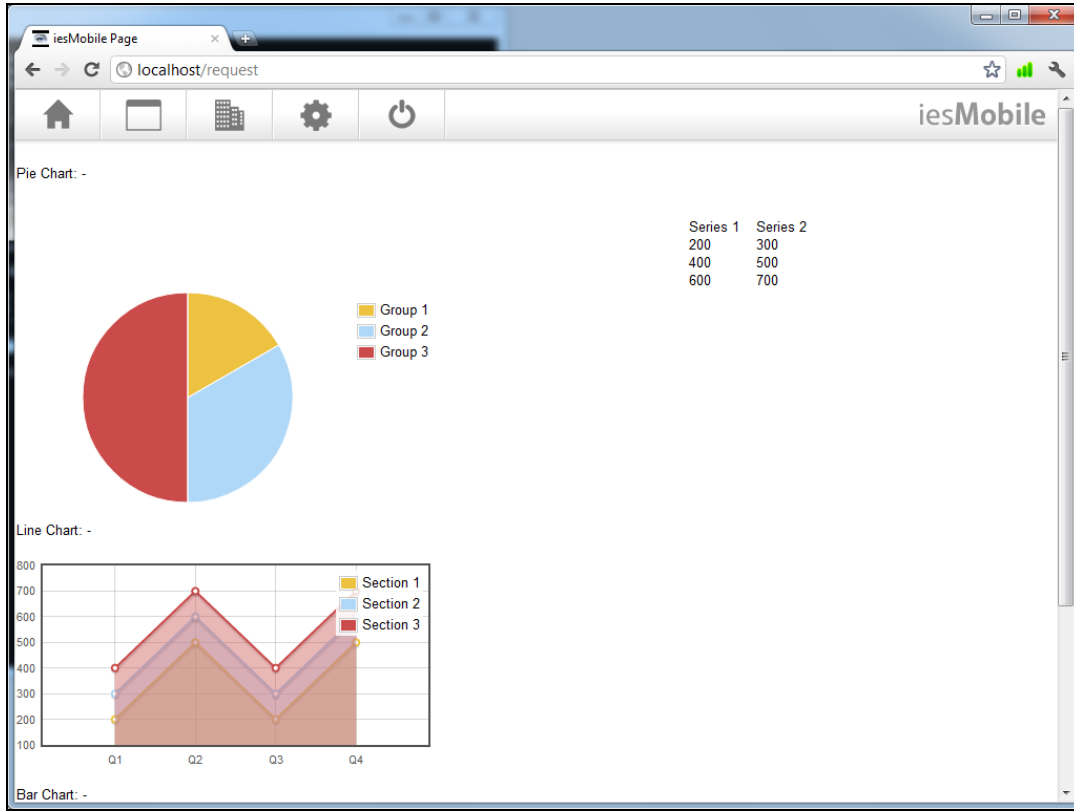
Slide 7

Slide notes: Once again, we have returned to the menu.

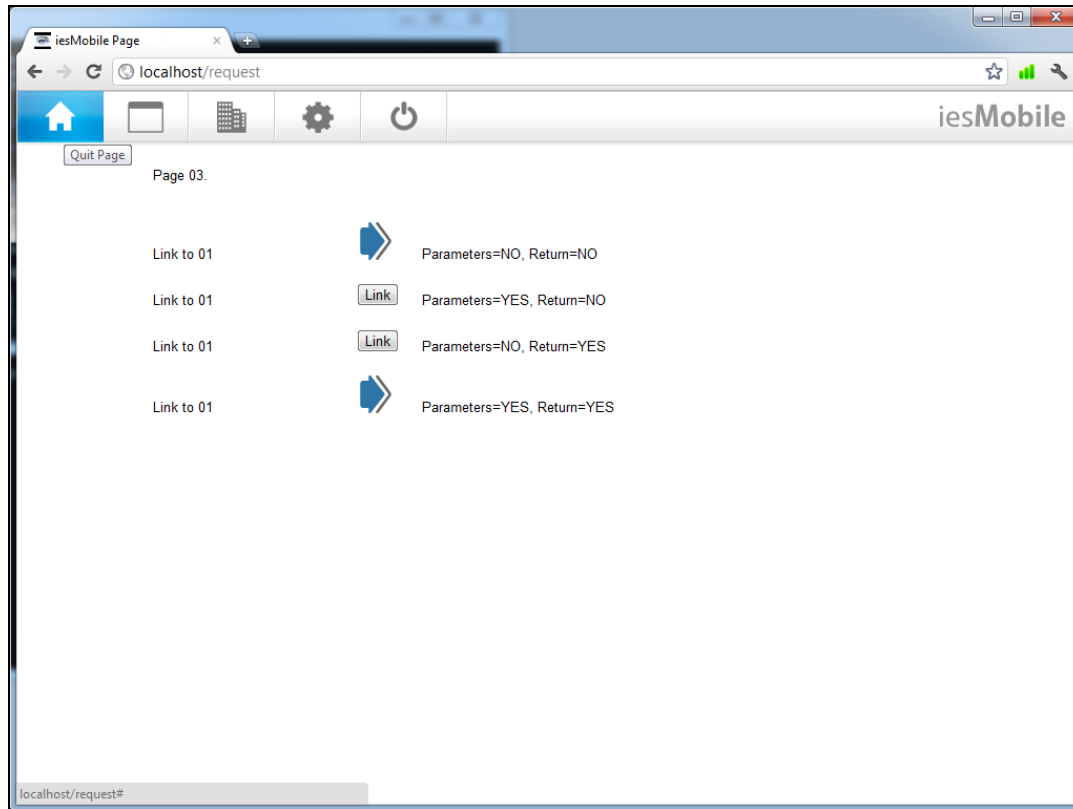


Slide 8

Slide notes: In the 3rd example, we do not pass values, but the link requests a return to the current page if the linked page is quit by the User.

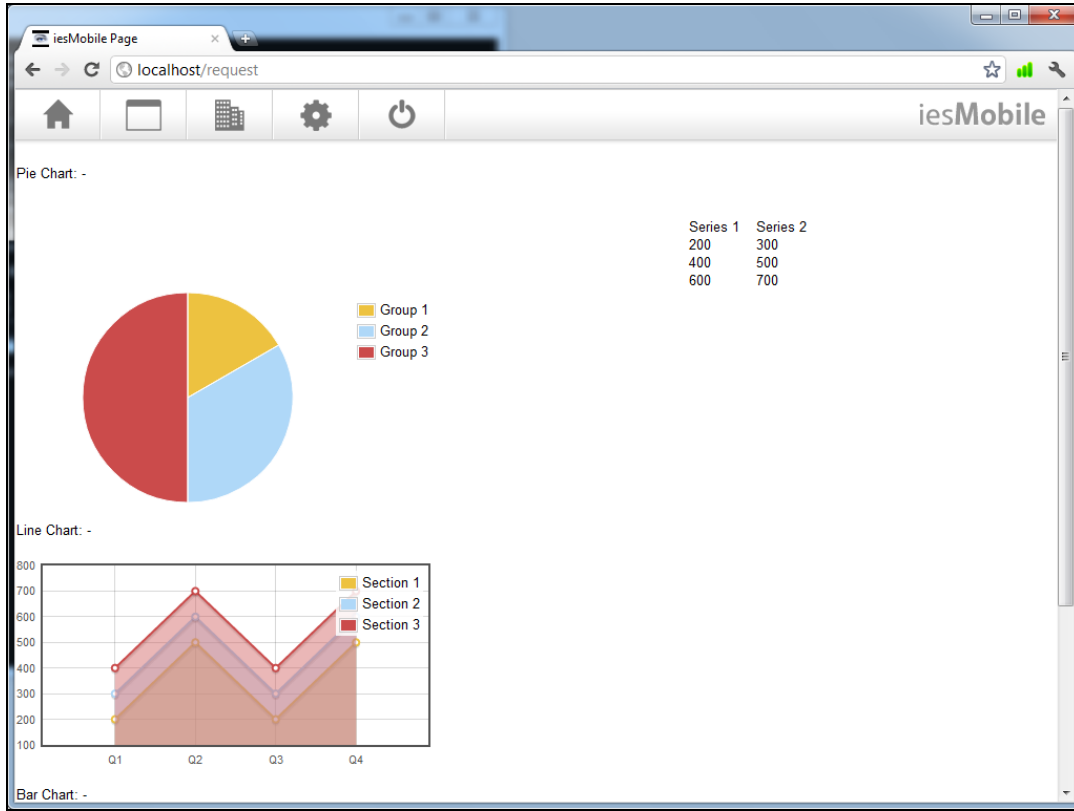


Slide 9
Slide notes:

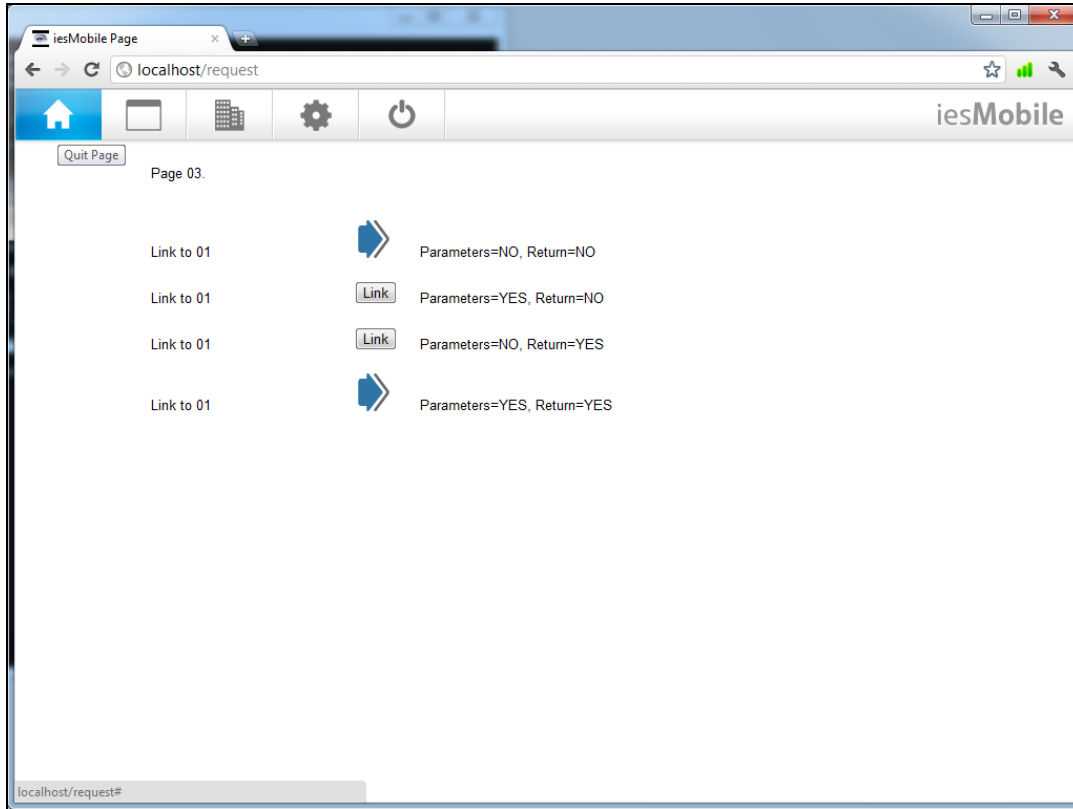


Slide 10

Slide notes: As we can see, we return to the original page instead of the menu. The 4th example will be the same, except that it also passes values to the linked page. To pass values is only meaningful if the linked page needs the values, i.e. uses some of the same runtime names in its execution.

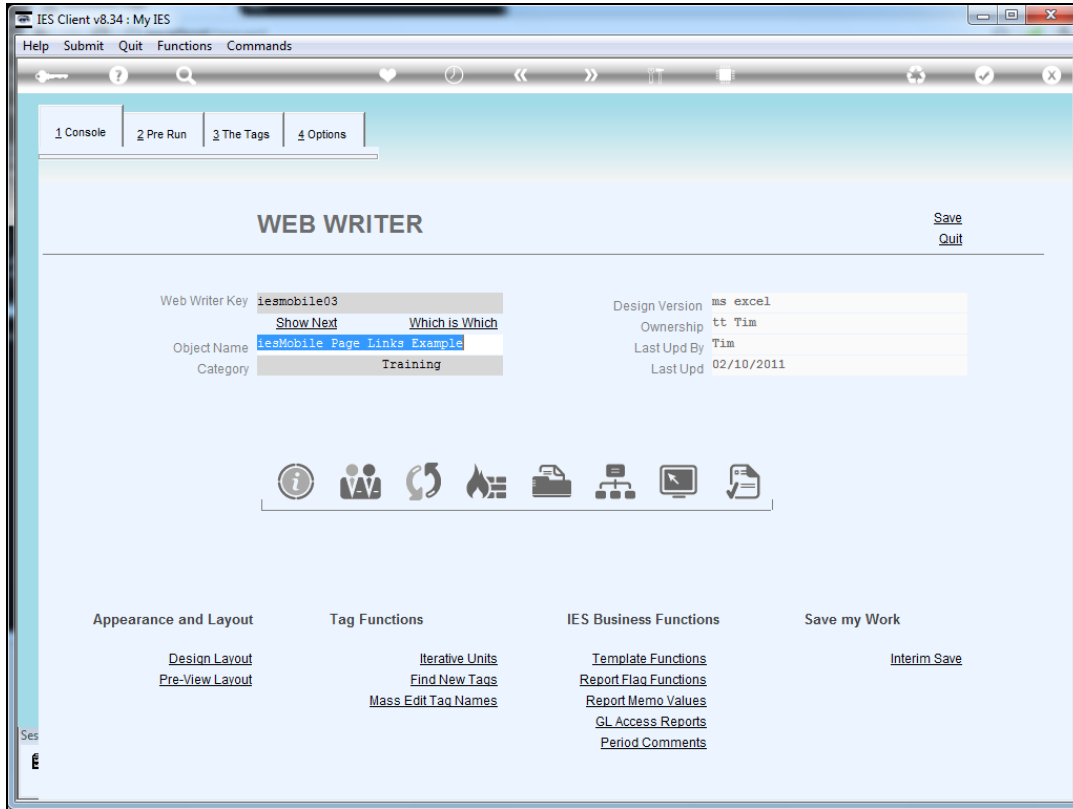


Slide 11
Slide notes:



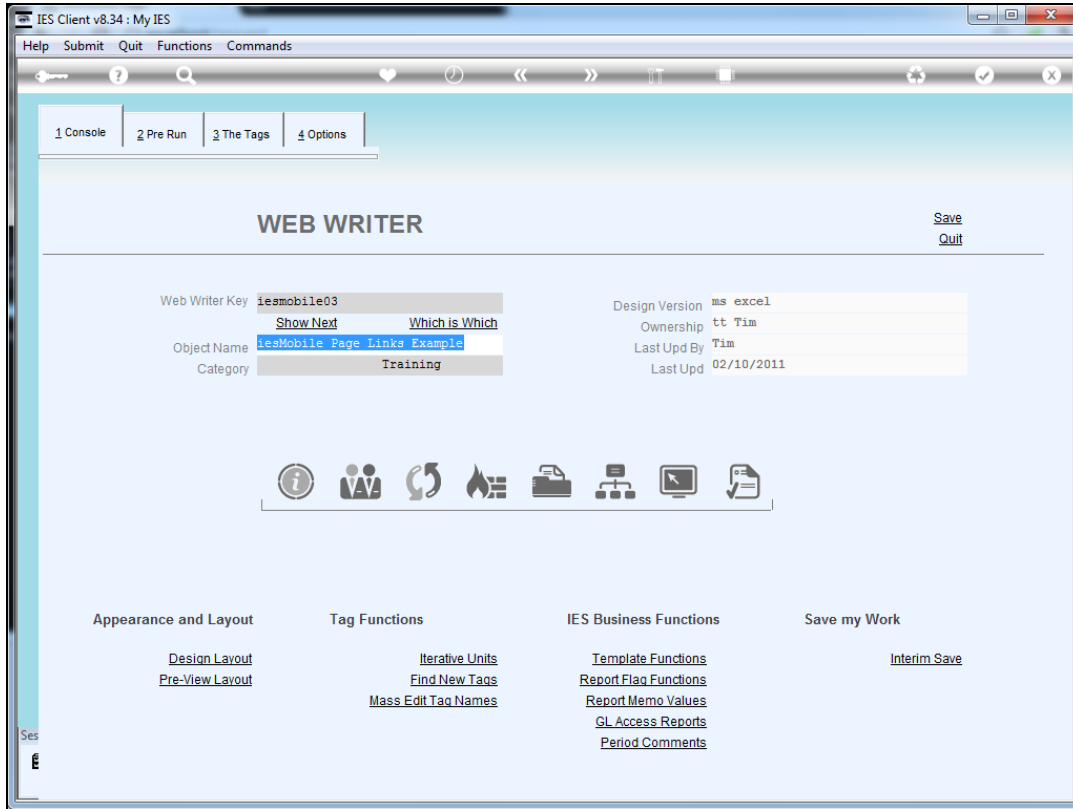
Slide 12

Slide notes: Now we will see how we can insert such a link in a page.

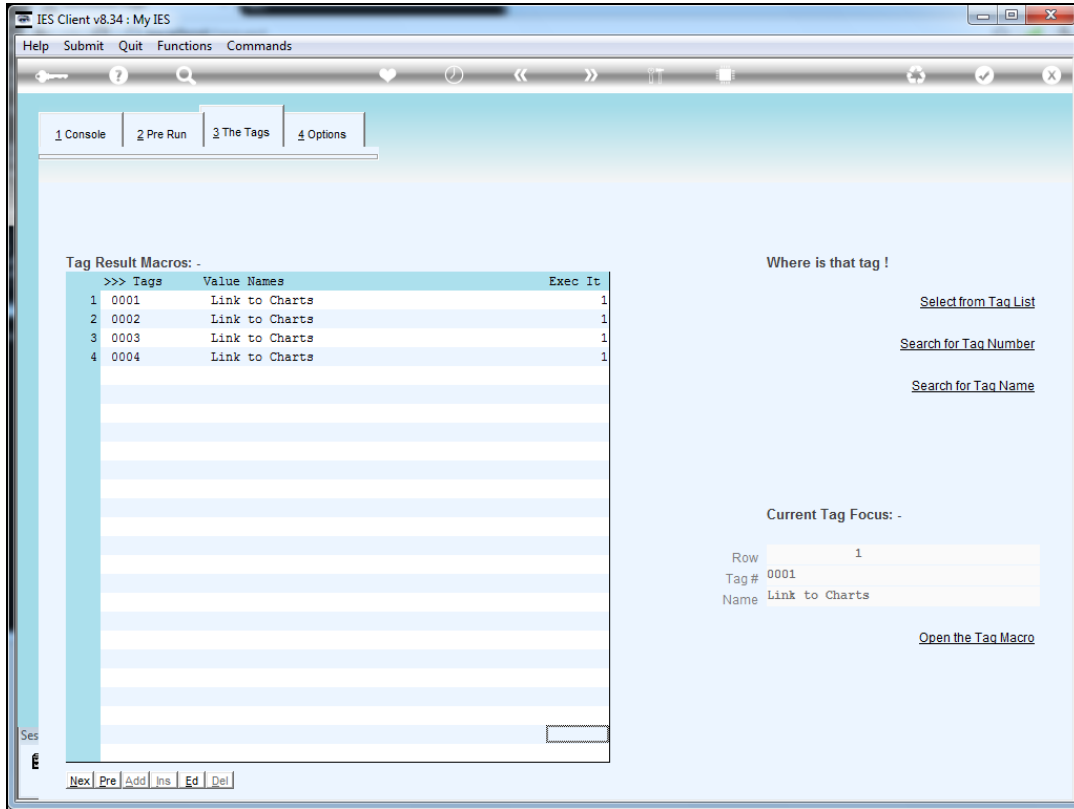


Slide 13

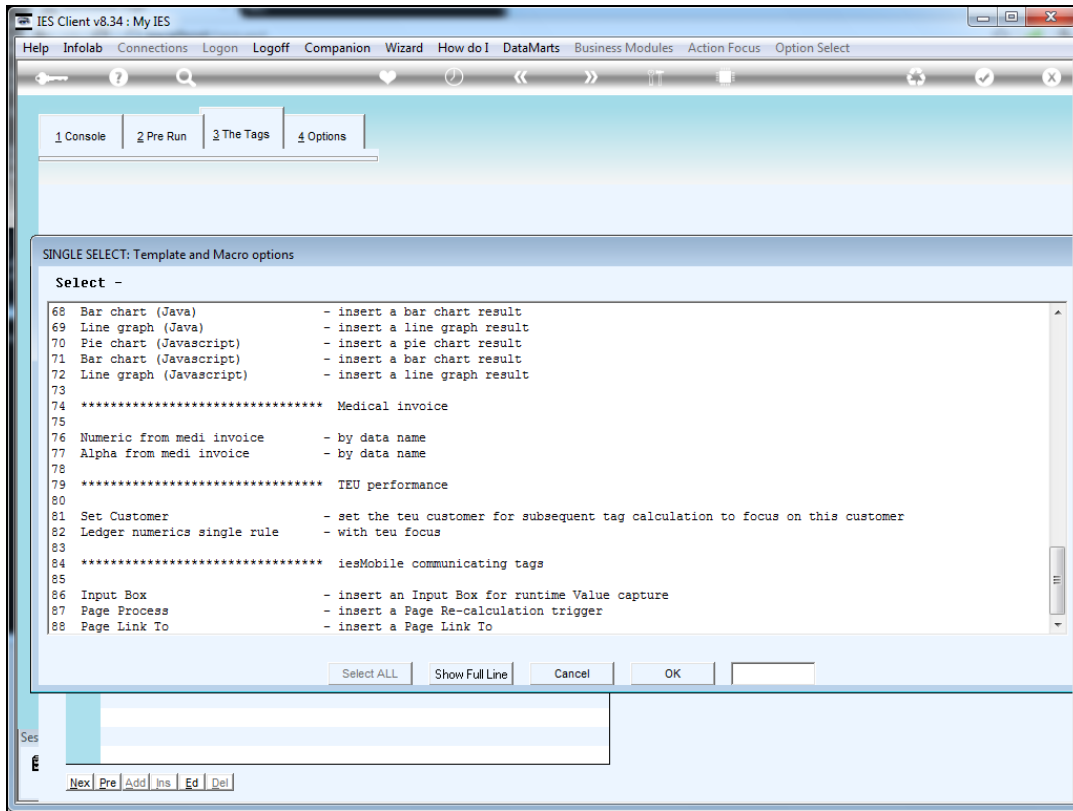
Slide notes: This is the object that performs the page we have been using.



Slide 14
Slide notes:

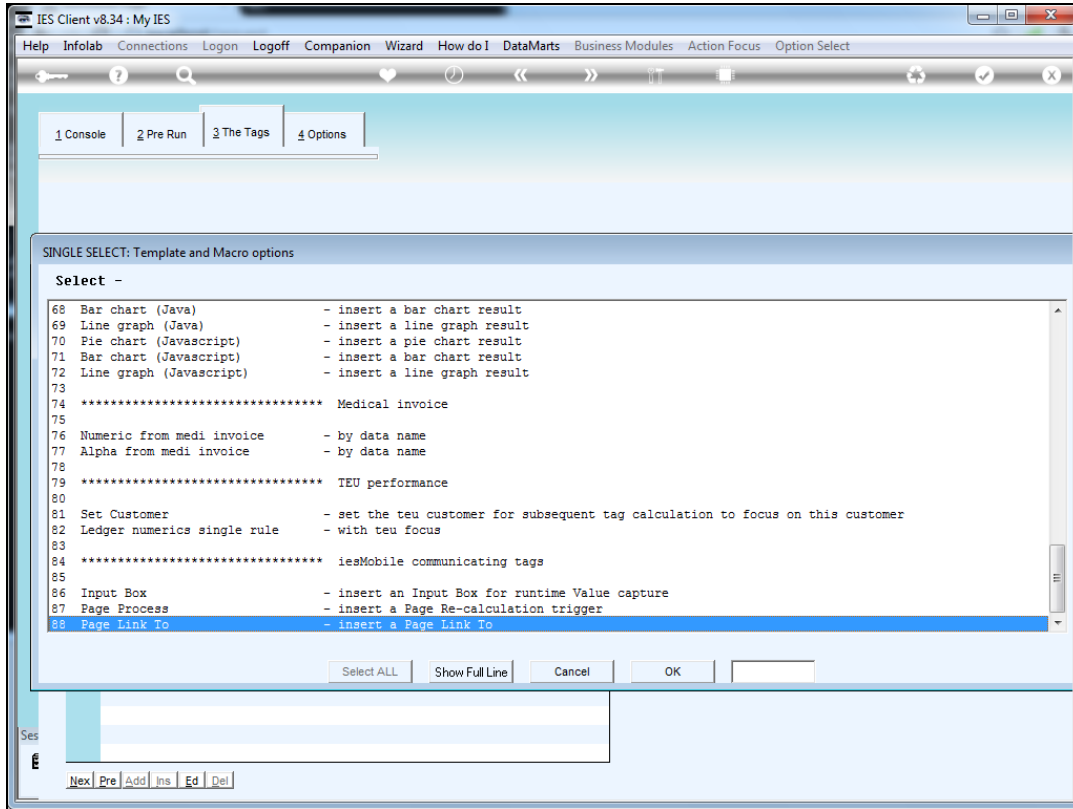


Slide 15
Slide notes:

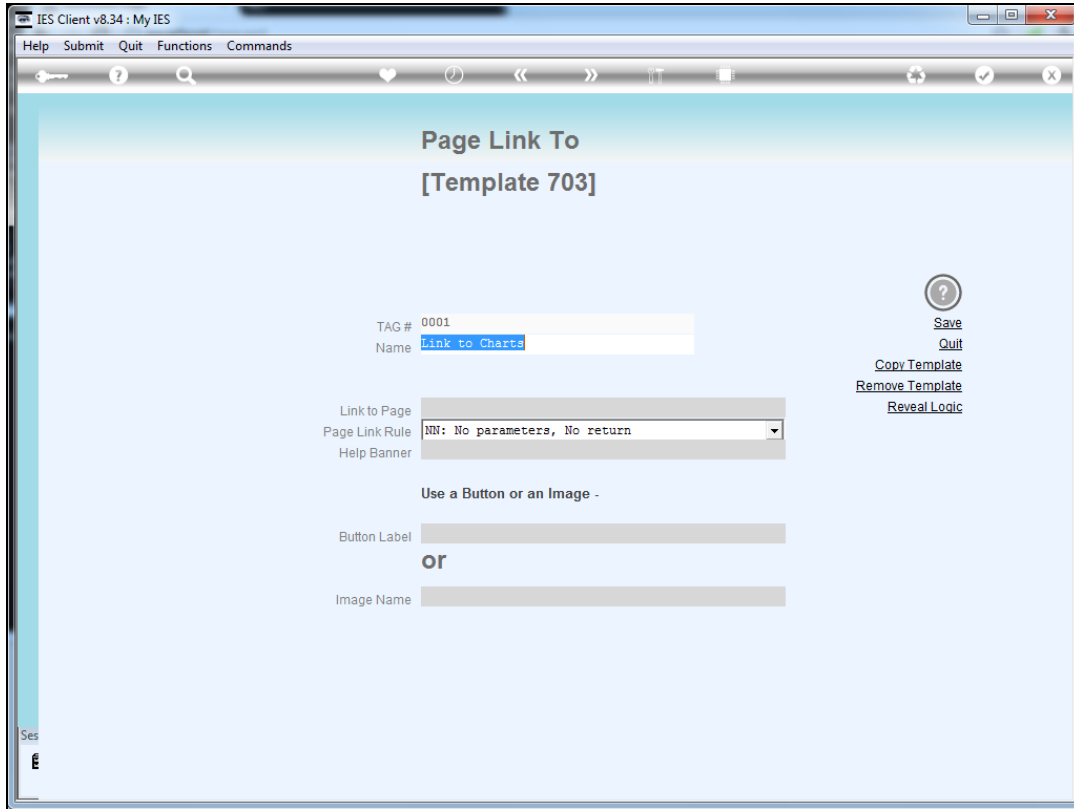


Slide 16

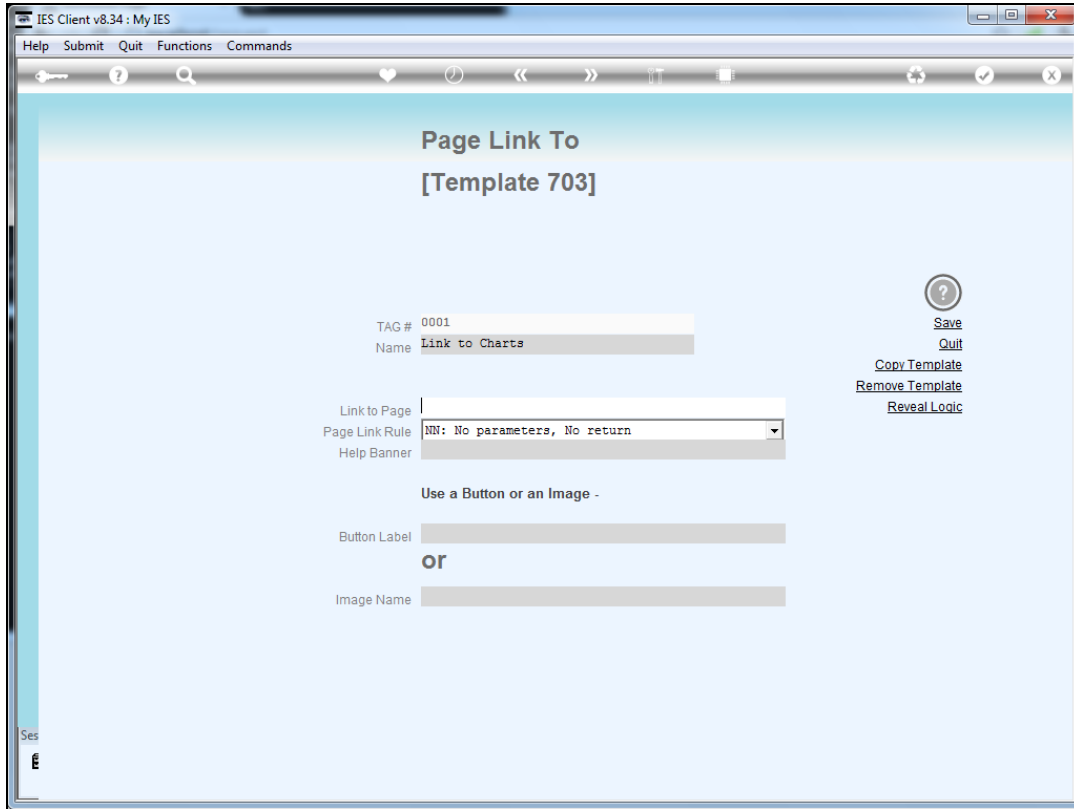
Slide notes: The Template to select is 'Page Link To'.



Slide 17
Slide notes:

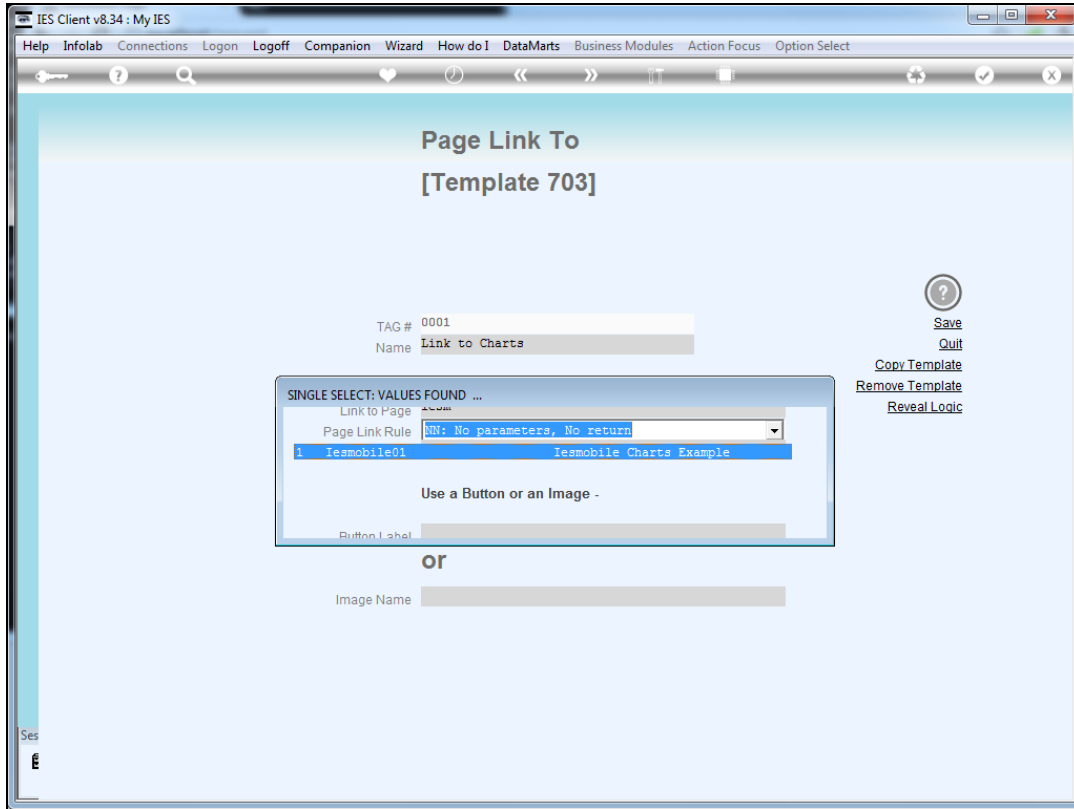


Slide 18
Slide notes:

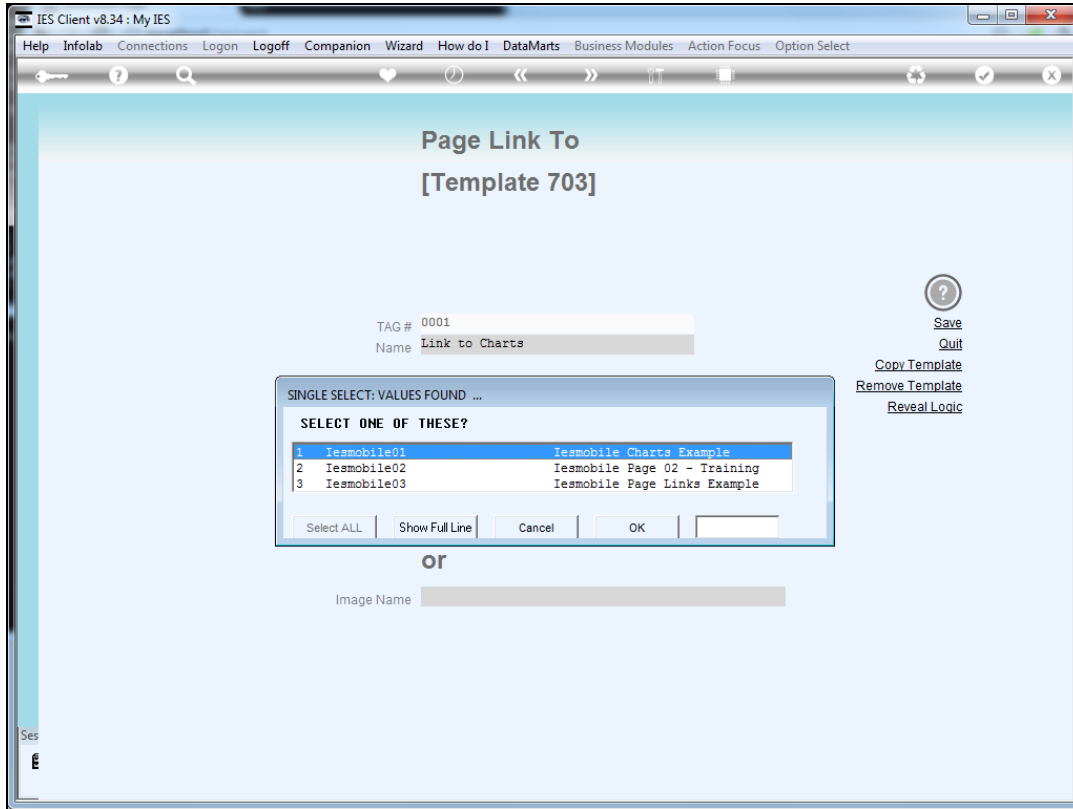


Slide 19

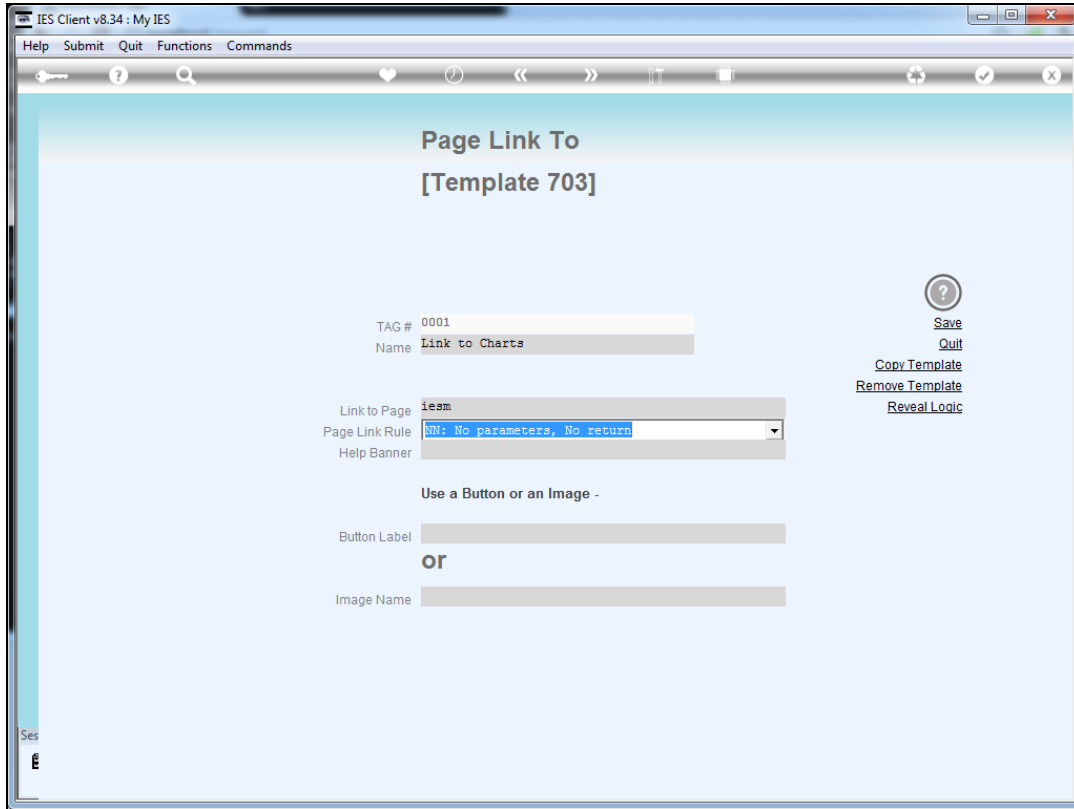
Slide notes: We select the page that will be linked to when the User chooses this option.



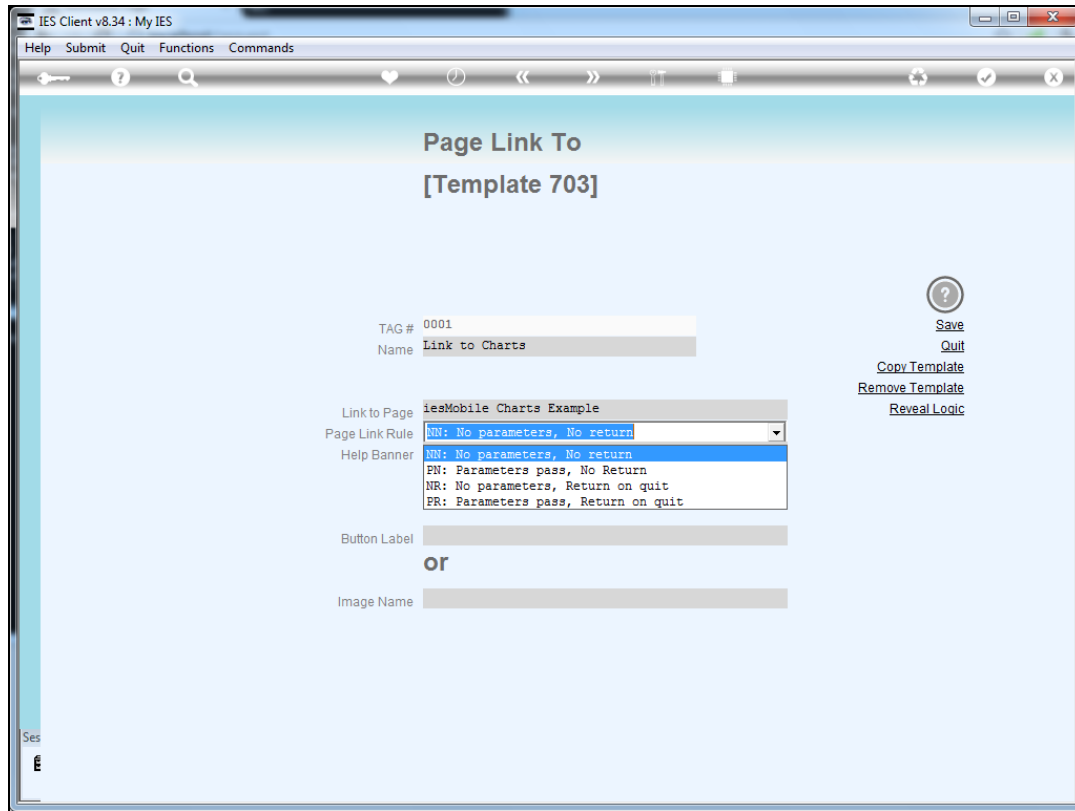
Slide 20
Slide notes:



Slide 21
Slide notes:

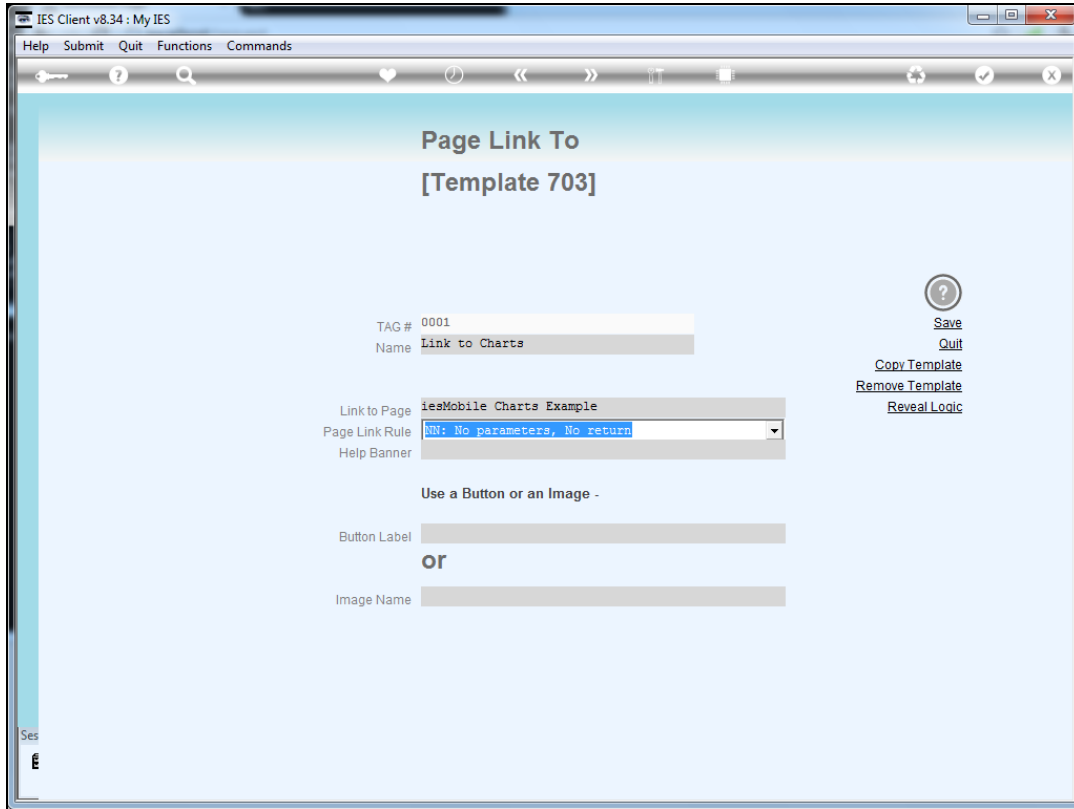


Slide 22
Slide notes:

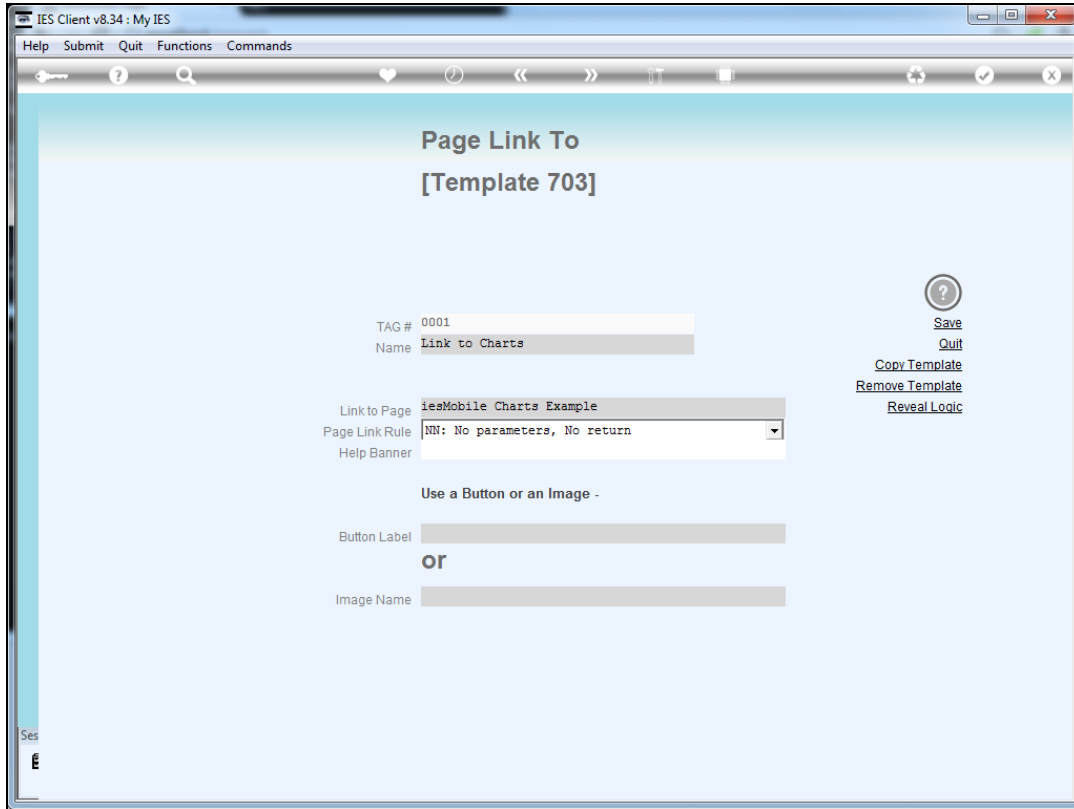


Slide 23

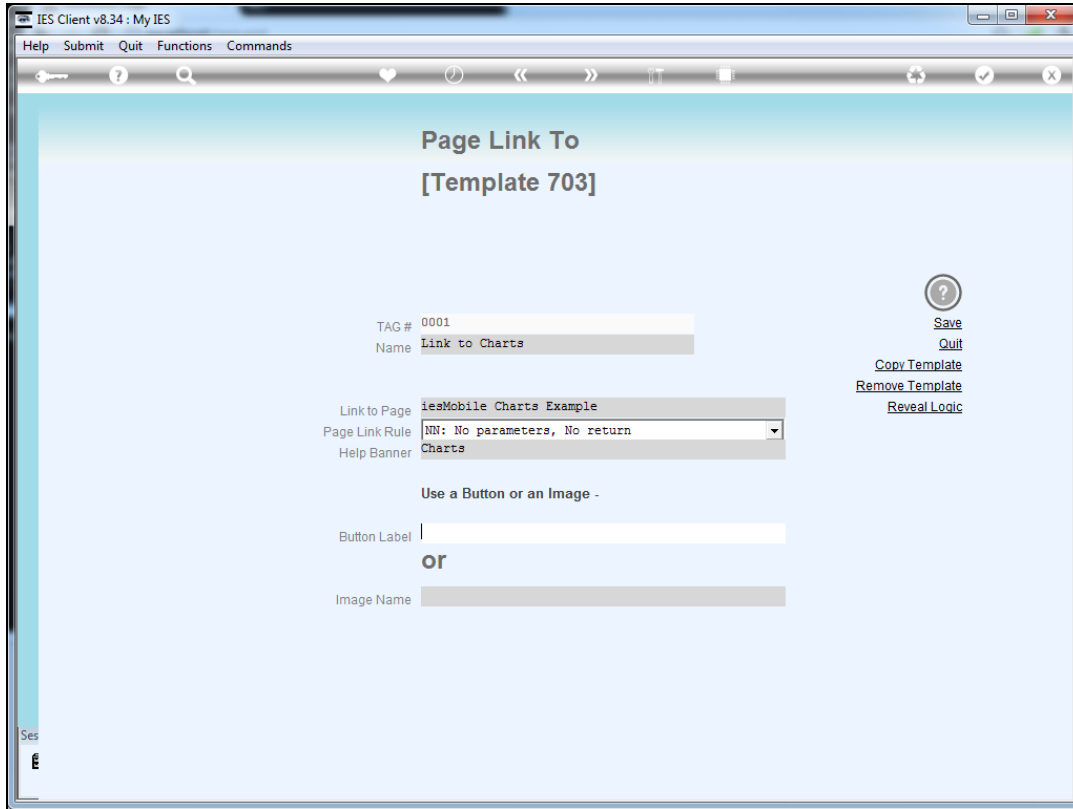
Slide notes: And we choose whether to pass values or not, as well as whether there will be a return to the original page or not.



Slide 24
Slide notes:

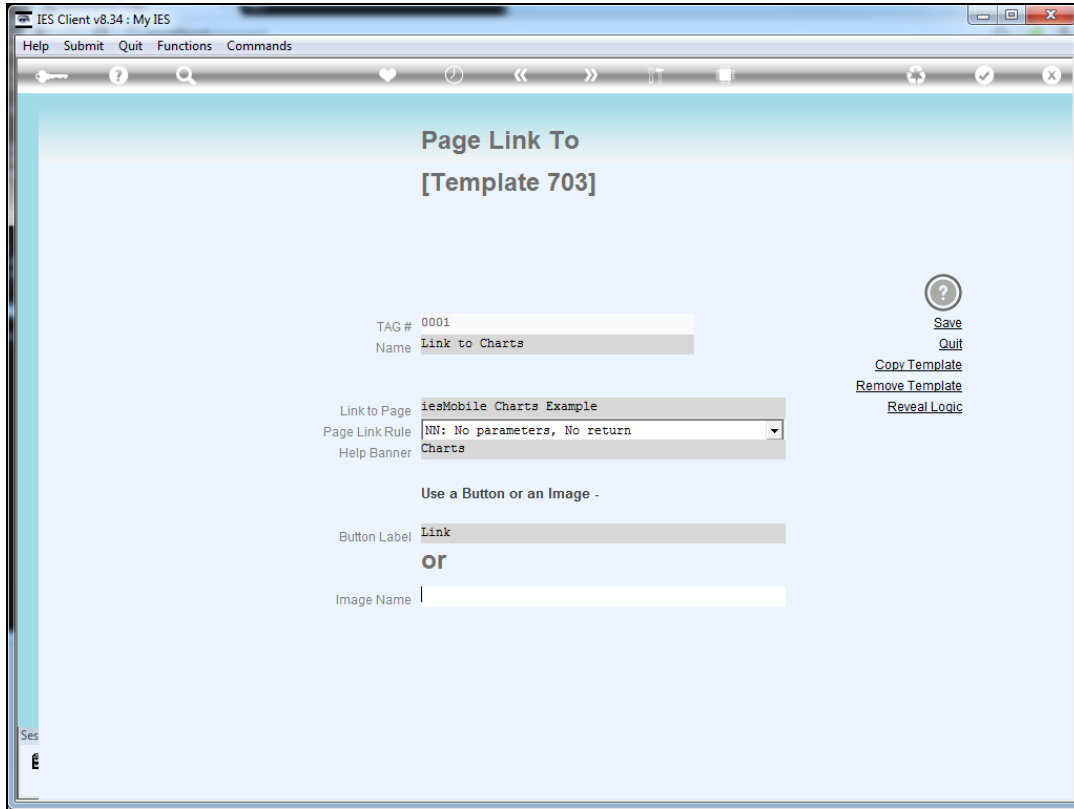


Slide 25
Slide notes:

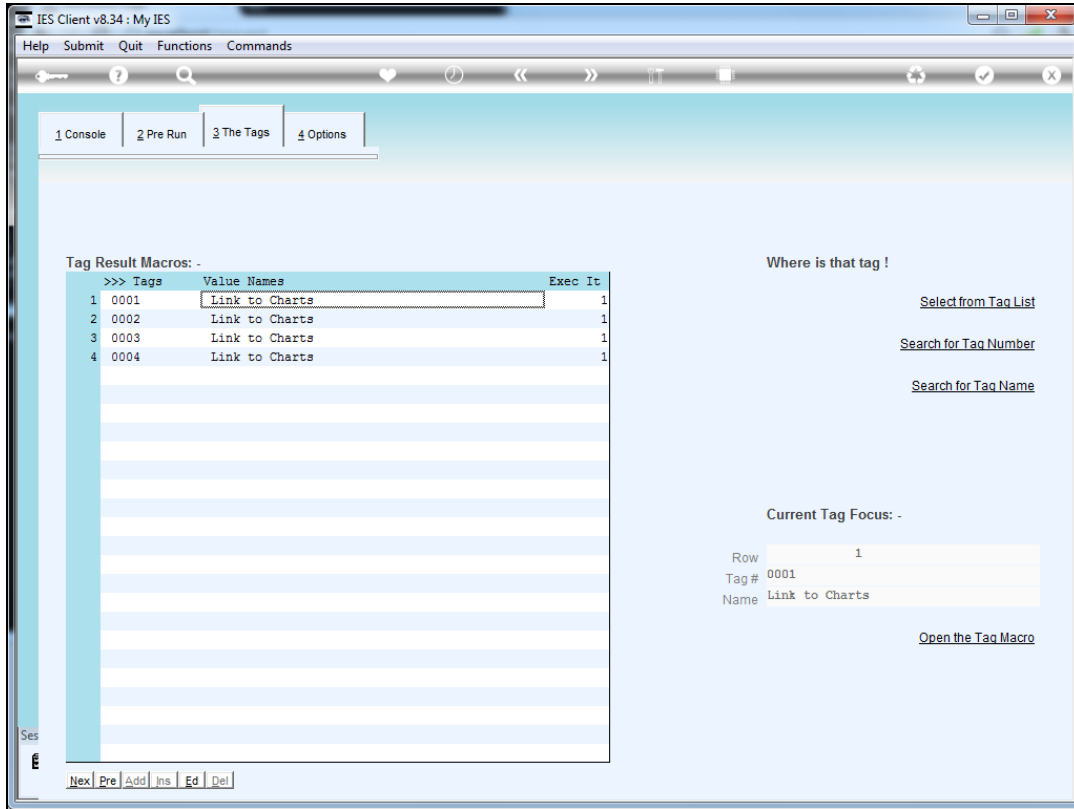


Slide 26

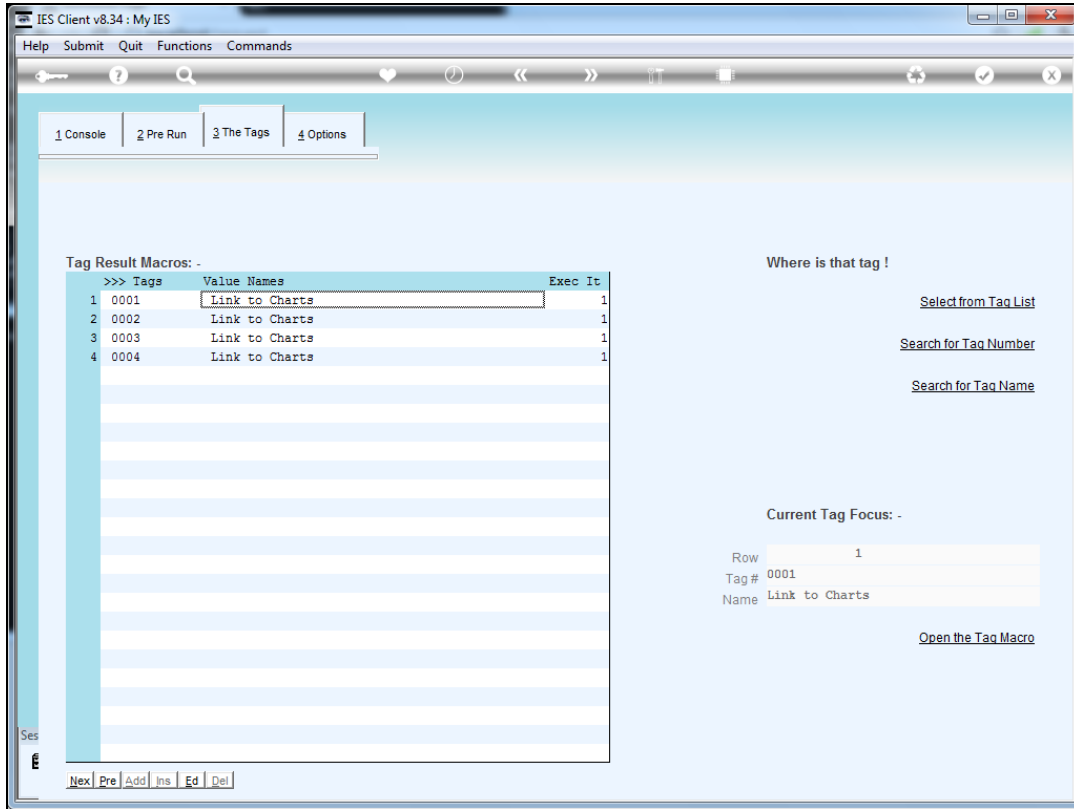
Slide notes: We may choose between a button or an image to represent the link.



Slide 27
Slide notes:



Slide 28
Slide notes:



Slide 29
Slide notes: