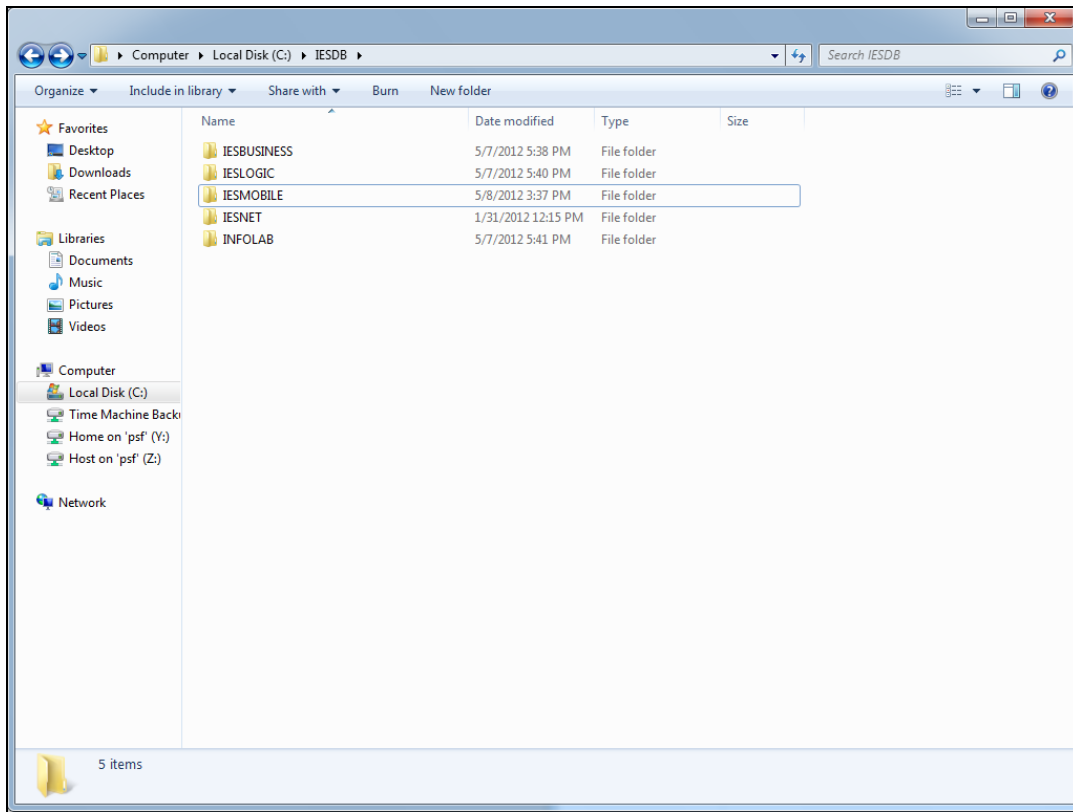
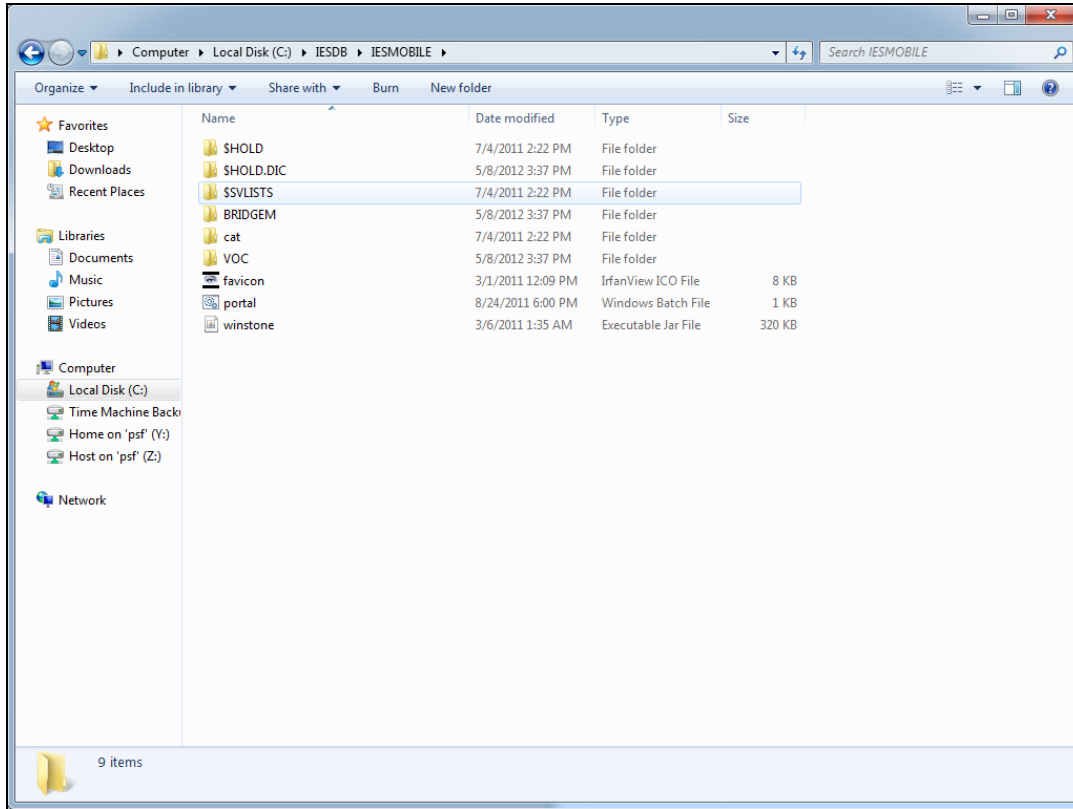


a

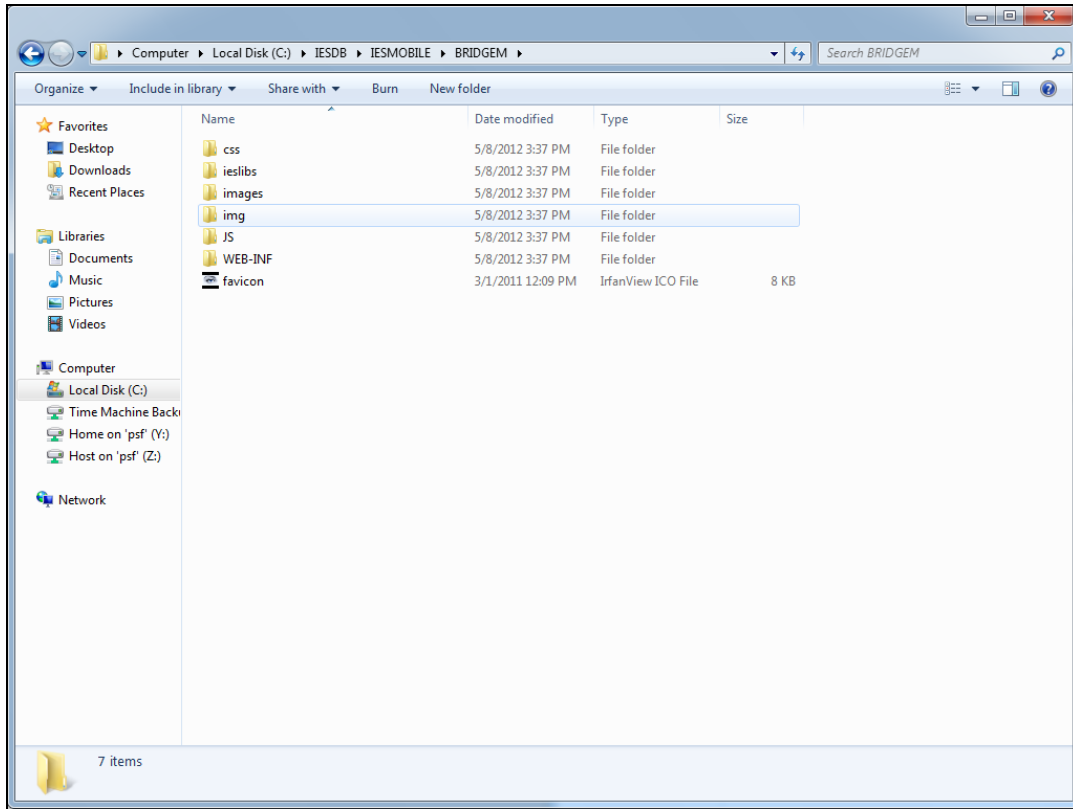


Slide 1

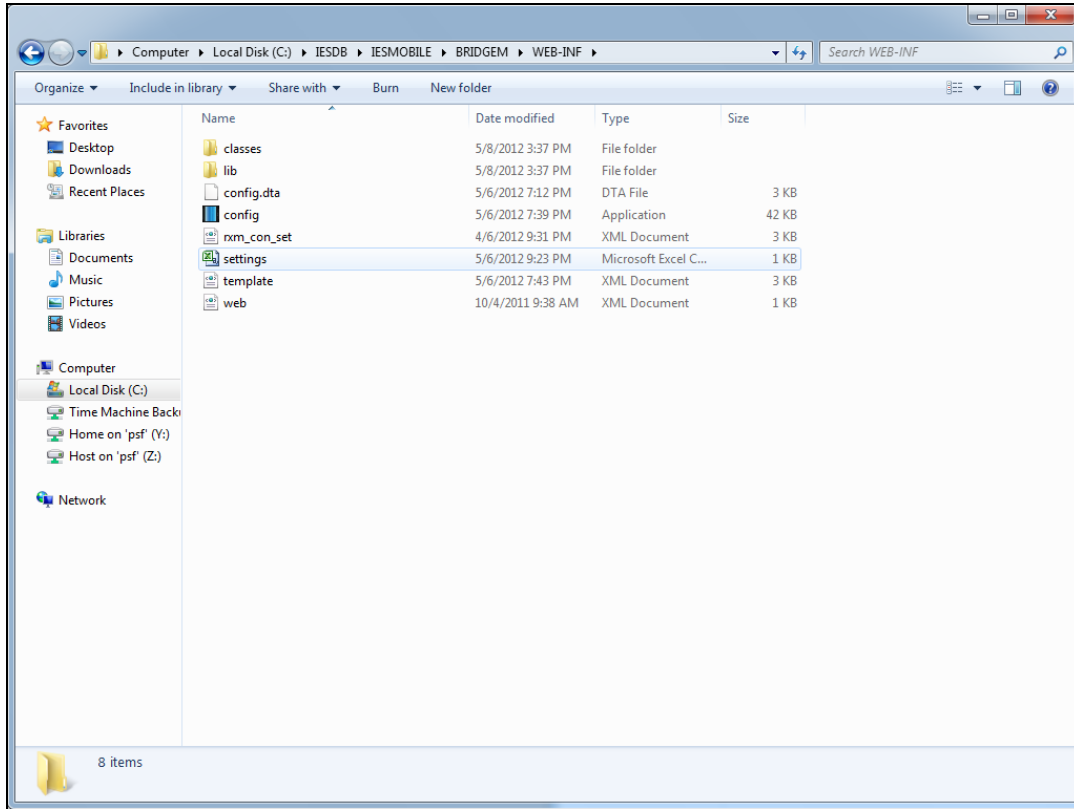
Slide notes: iesMobile requires some settings to know where to connect to, and how to perform the service. In the IESMOBILE folder, we will find a wizard that we can use to update these settings.



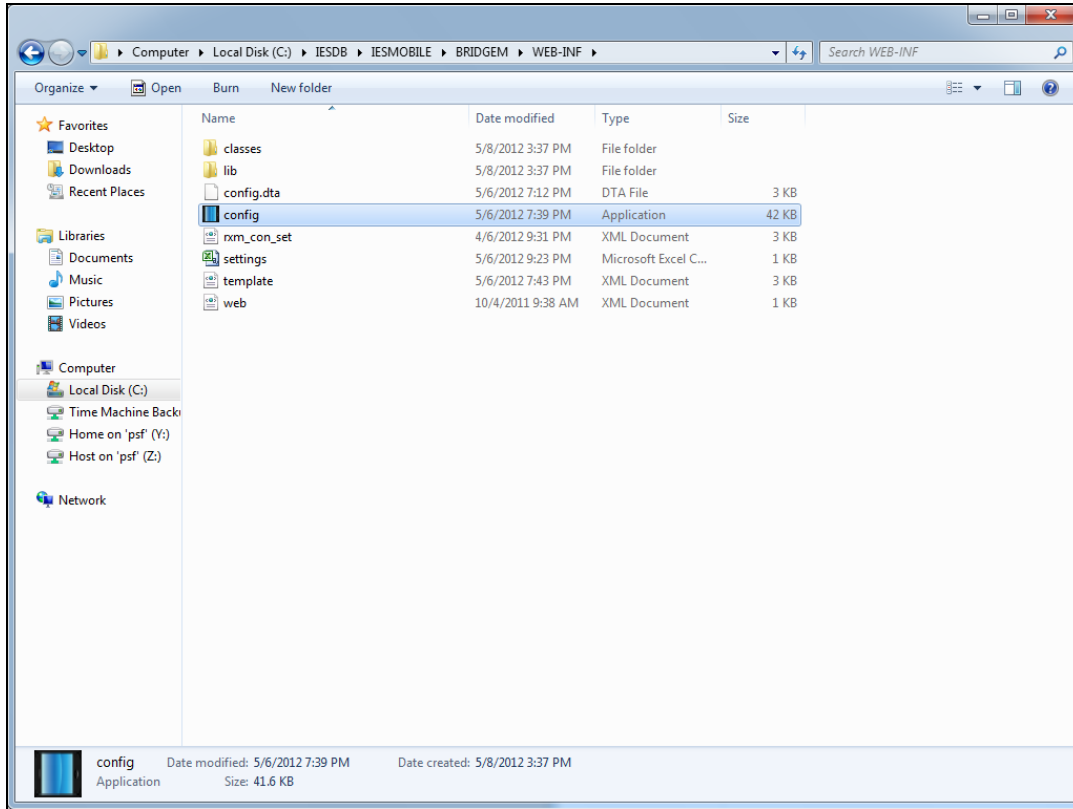
Slide 2
Slide notes:



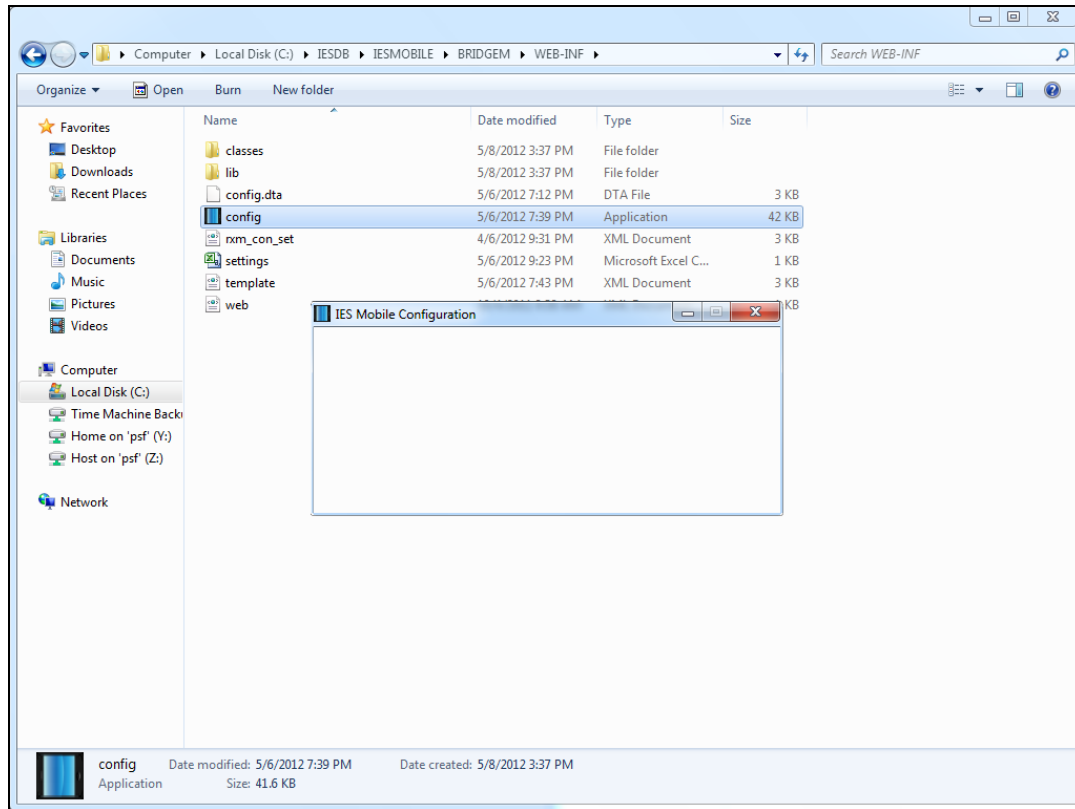
Slide 3
Slide notes:



Slide 4
Slide notes:

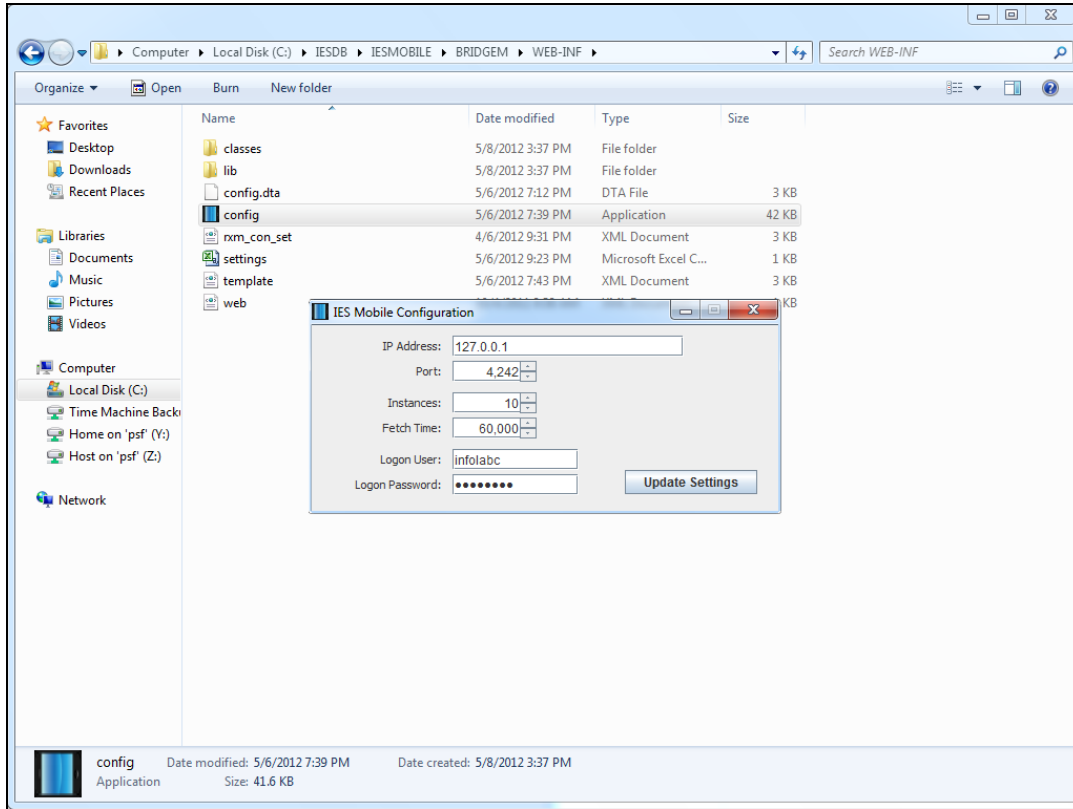


Slide 5
Slide notes:



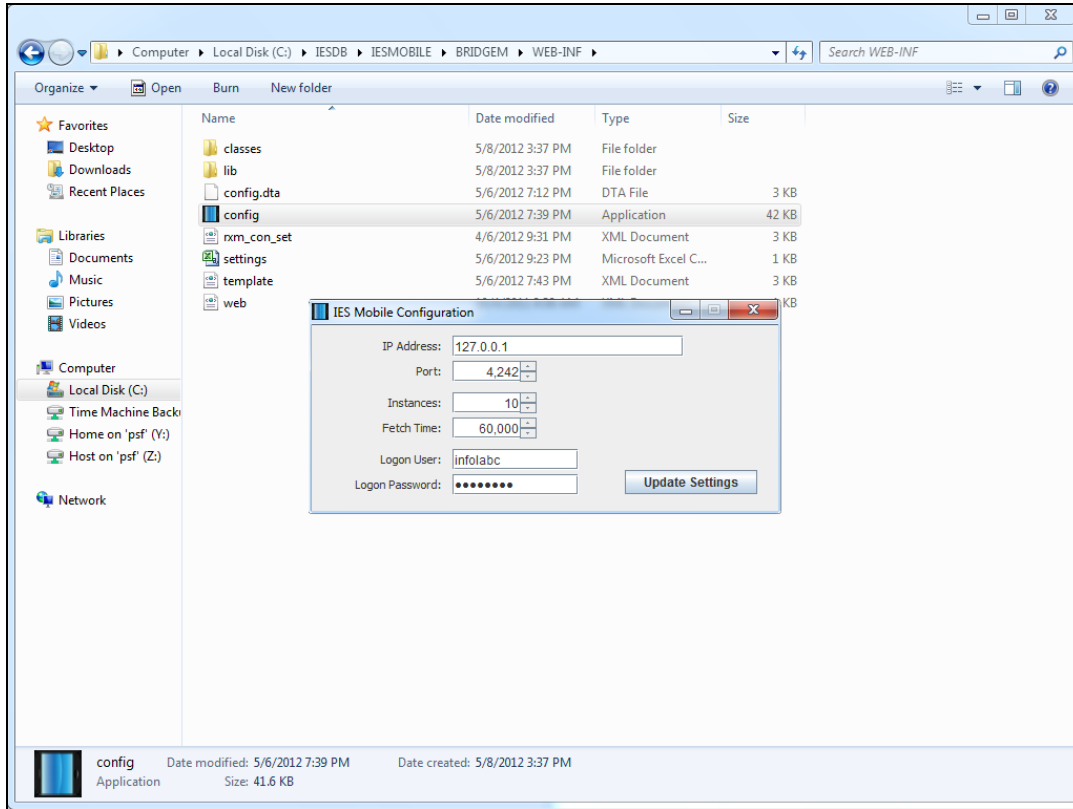
Slide 6

Slide notes: The IP address should not be confused with the iesMobile Server IP address. It is in fact the address where iesMobile will find the IES Service, i.e. the IES server. Of course, if iesMobile is on the same server, then this IP is the same, as in this case where the IP address is equivalent to localhost.



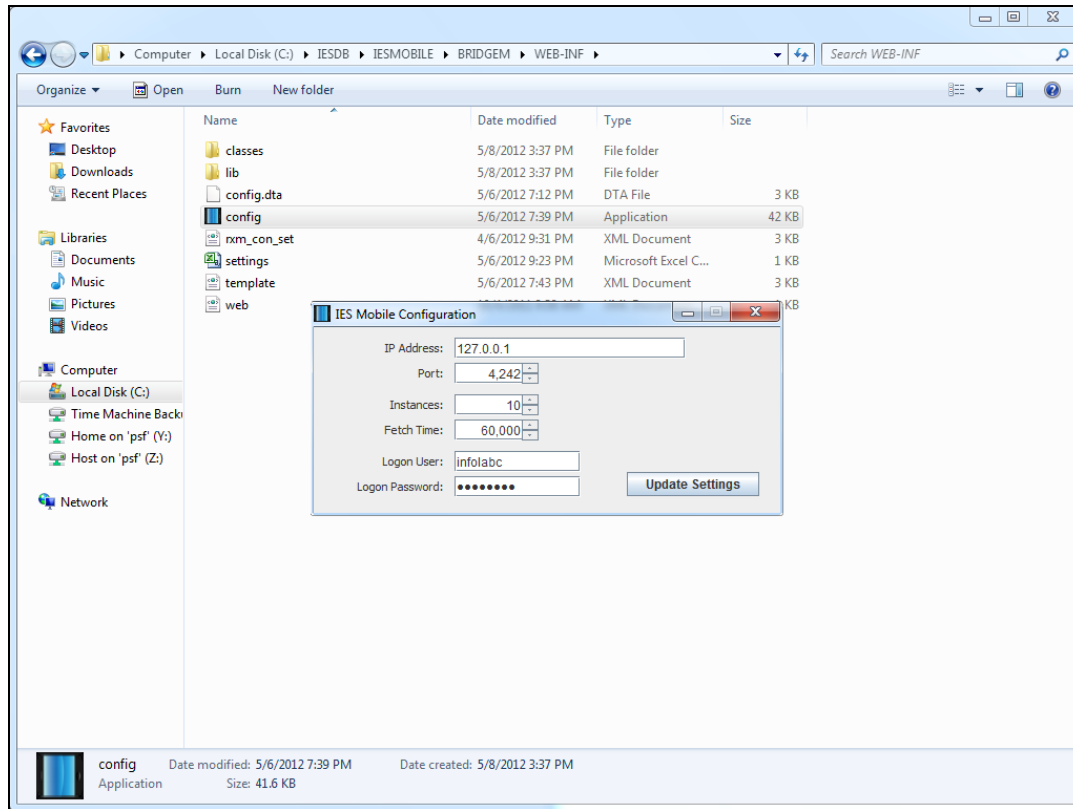
Slide 7

Slide notes: The standard port is 4242 for connection to the IES Service at IES Server.



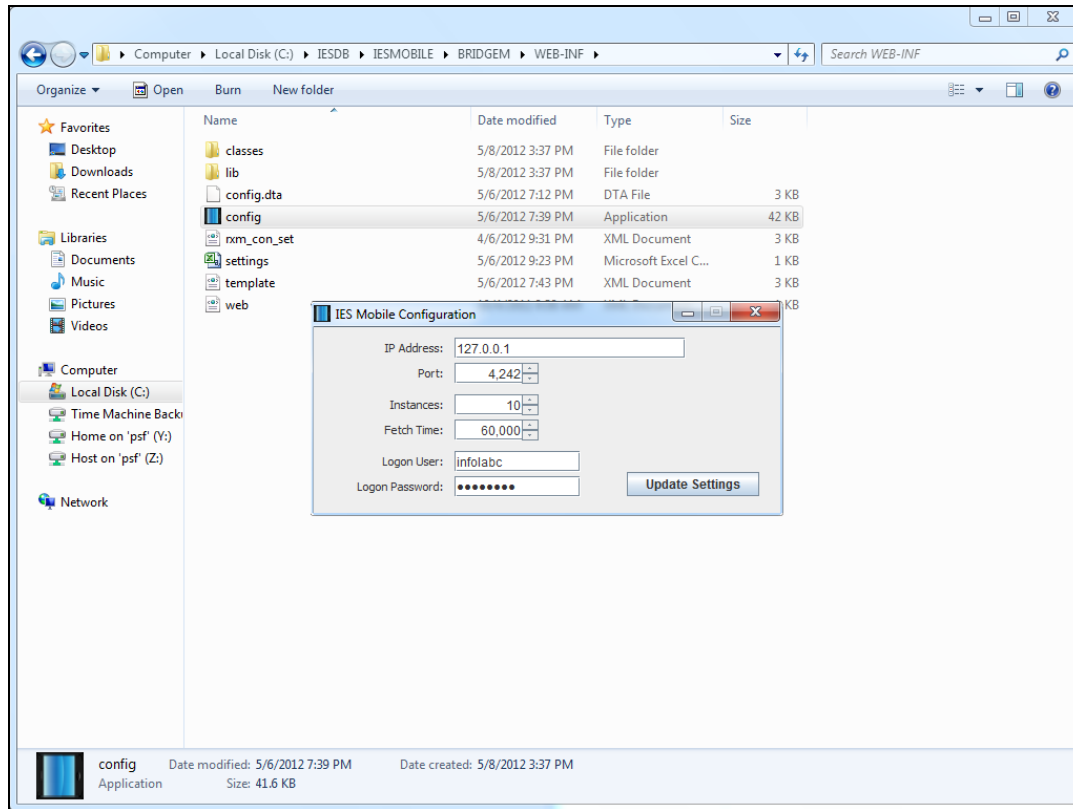
Slide 8

Slide notes: The instances indicate the maximum number of seat logons that iesMobile may utilize at the IES Server. iesMobile can host multiple Users per seat.



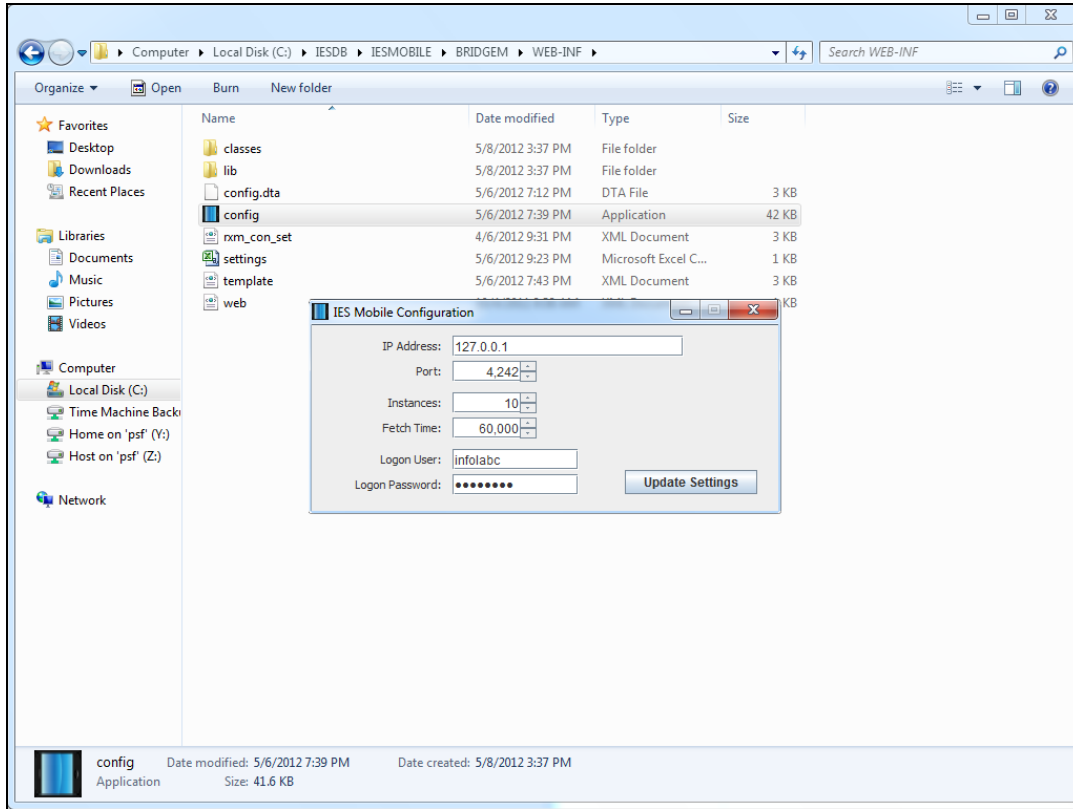
Slide 9

Slide notes: The Fetch Time is the maximum delay allowed before a page awaited from IES Server will timeout. This value is specified in milliseconds, i.e. 60,000 is actually 60 seconds or 1 minute.

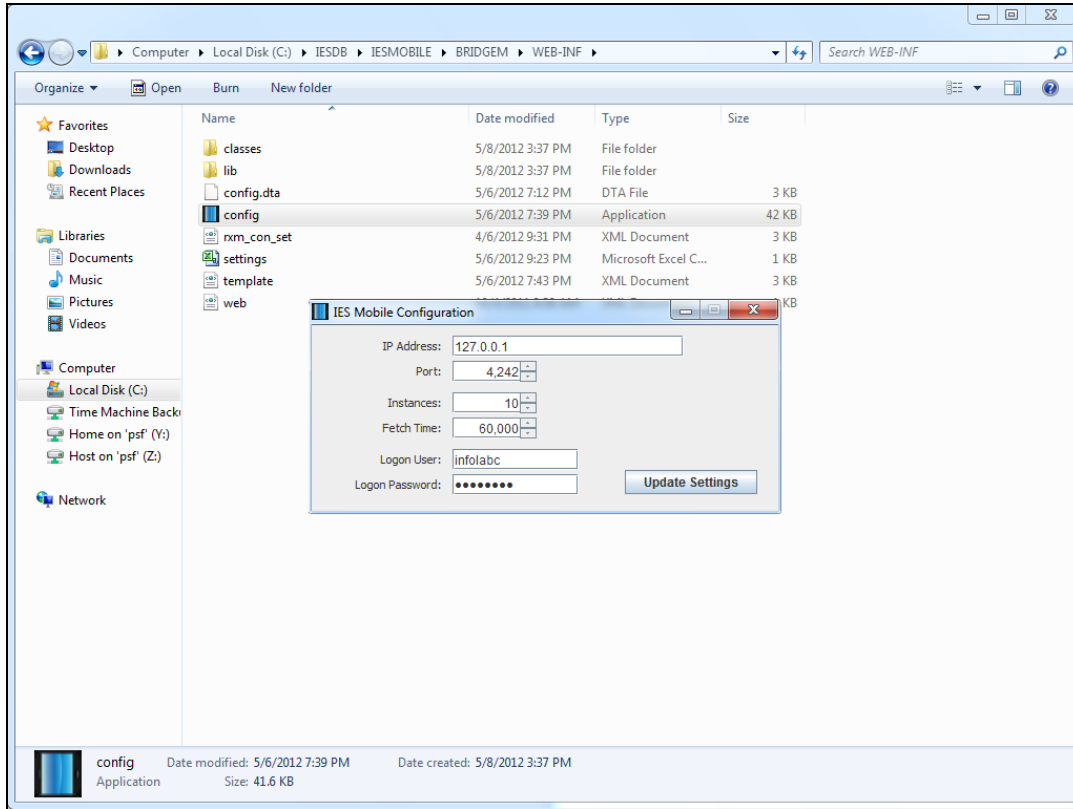


Slide 10

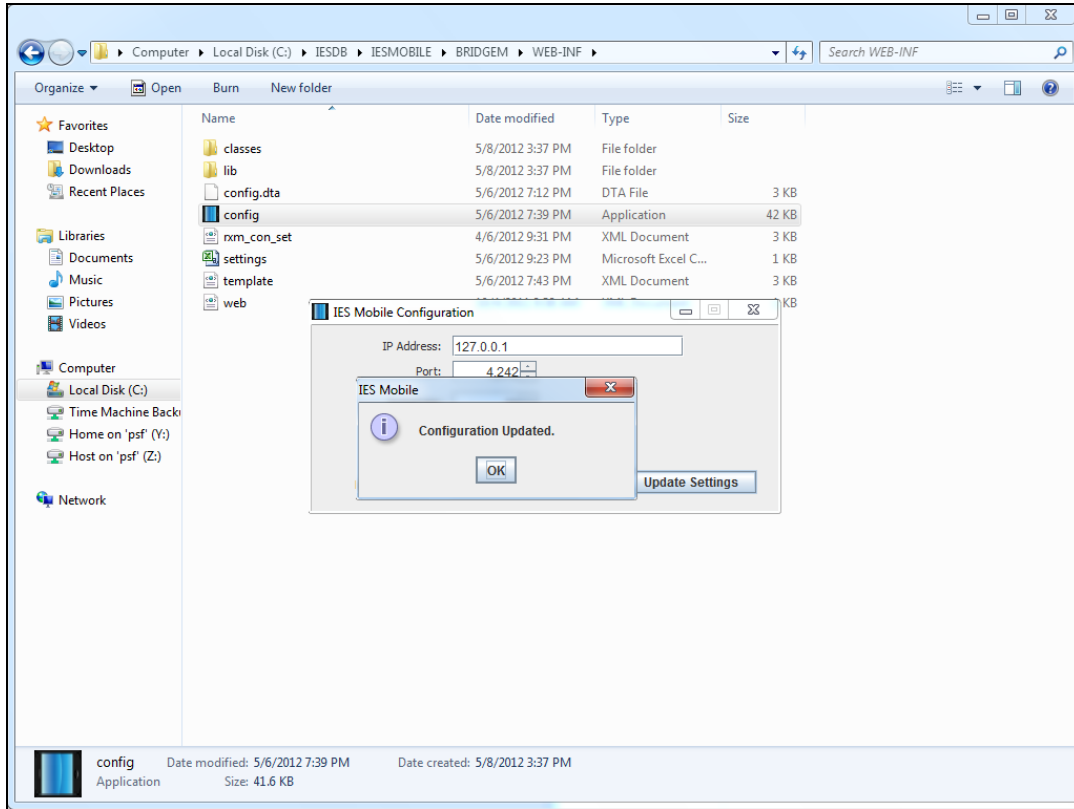
Slide notes: The logon user is the User that iesMobile offers itself as at IES Server, i.e. a regular User, typically 'infolabc', and with password for this logon User. This UserCode is only used by iesMobile to connect to the IES Service, but any User using the system will still have to logon with his or her own credentials.



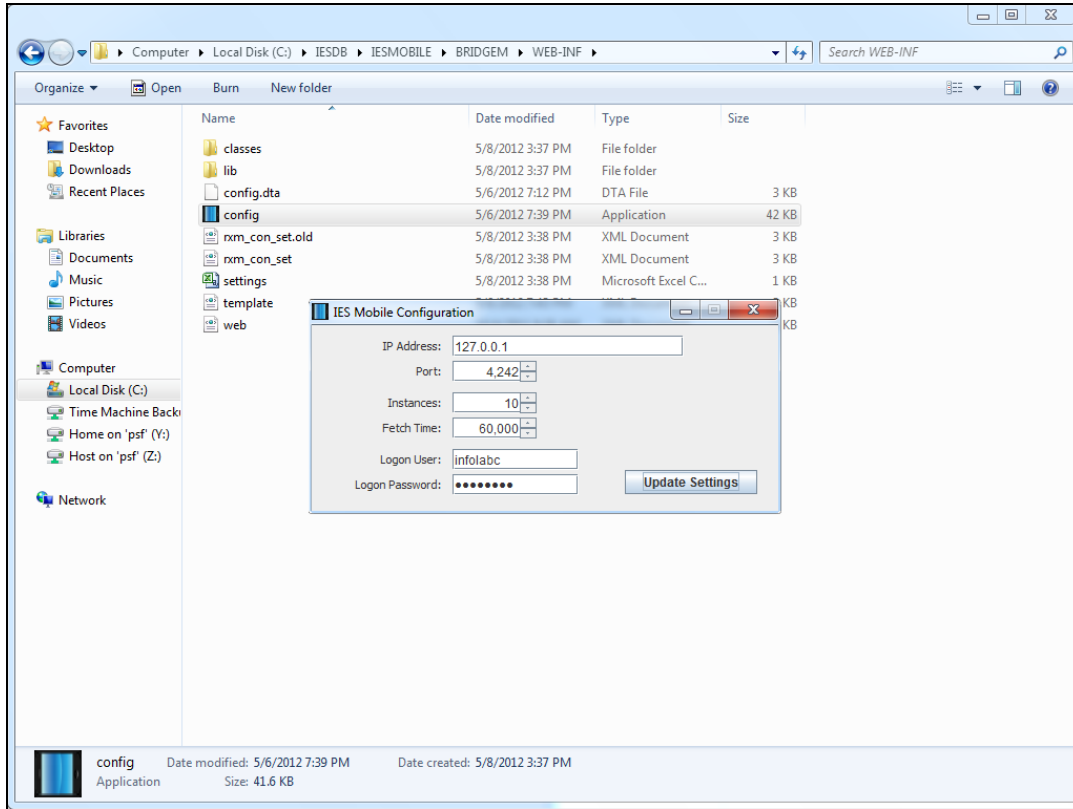
Slide 11
Slide notes:



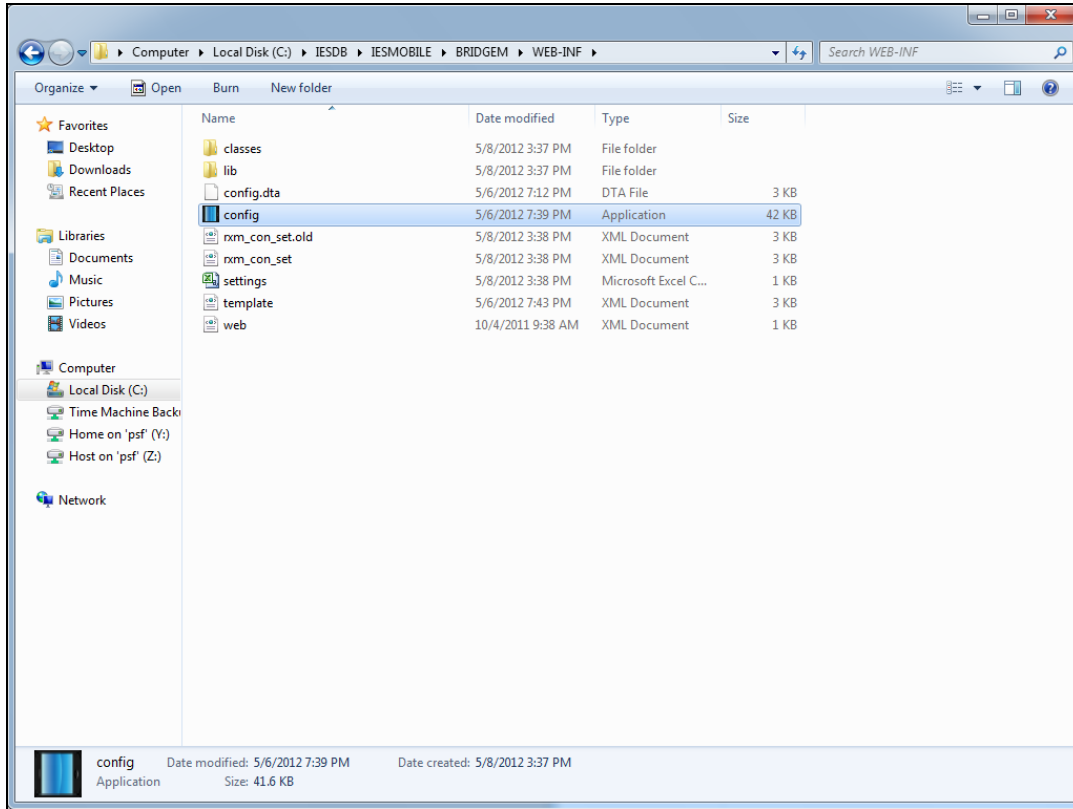
Slide 12
Slide notes:



Slide 13
Slide notes:



Slide 14
Slide notes:



Slide 15
Slide notes: